

- * Depending on the software installed or your service provider or country, some of the descriptions in this guide may not match your phone exactly.
- * Depending on your country, your phone and accessories may appear different from the illustrations in this guide.

SAMSUNG ELECTRONICS



World Wide Web
<http://www.samsungmobile.com>

Printed in Korea
Code No.:GH68-xxxxxA
English. 11/2007. Rev. 1.0



SGH-J630 User's Guide





Important safety precautions

- Failure to comply with the following precautions may be dangerous or illegal.

Copyright information

- Bluetooth® is a registered trademark of the Bluetooth SIG, Inc. worldwide.
Bluetooth QD ID: B013410
- Java™ is a trademark or registered trademark of Sun Microsystems, Inc.
- Windows Media Player® is a registered trademark of Microsoft Corporation.

Drive safely at all times

Do not use a hand-held phone while driving. Park your vehicle first.

Switch off the phone when refuelling

Do not use the phone at a refuelling point (service station) or near fuels or chemicals.

Switch off in an aircraft

Wireless phones can cause interference. Using them in an aircraft is both illegal and dangerous.

Switch off the phone near all medical equipment

Hospitals or health care facilities may be using equipment that could be sensitive to external radio frequency energy. Follow any regulations or rules in force.

Interference

All wireless phones may be subject to interference, which could affect their performance.

Be aware of special regulations

Meet any special regulations in force in any area and always switch off your phone whenever it is forbidden to use it, or when it may cause interference or danger.


Water resistance

Your phone is not water-resistant. Keep it dry.

Sensible use

Use only in the normal position (held to your ear). Avoid unnecessary contact with the antenna when the phone is switched on.

Emergency calls

Key in the emergency number for your present location, then press .

Keep your phone away from small children

Keep the phone and all its parts, including accessories, out of the reach of small children.

Accessories and batteries

Use only Samsung-approved batteries and accessories, such as headsets and PC data cables. Use of any unauthorised accessories could damage you or your phone and may be dangerous.

- The phone could explode if the battery is replaced with an incorrect type.
- Dispose of used batteries according to the manufacturer's instructions.



At very high volumes, prolonged listening to a headset can damage your hearing.

Qualified service

Only qualified service personnel may repair your phone.

For more detailed safety information, see "Health and safety information" on page 32.

About this Guide

This User's Guide provides you with condensed information about how to use your phone.

In this guide, the following instruction icons appear:

- ☑ Indicates that you need to pay careful attention to the subsequent information regarding safety or phone features.
- Indicates that you need to press the Navigation keys to scroll to the specified option and then select it.
- [] Indicates a key on the phone.
For example, [↶]
- < > Indicates a soft key, whose function is displayed on the phone screen.
For example, <Select>



- **3G**
Your phone is capable of operating in a 3G environment, allowing much greater data transfer speed, video streaming, and video conferencing.

Special features of your phone



- **RSS reader**
Use RSS reader to get the latest news from your favourite websites.



- **Camera and camcorder**
Use the camera module on your phone to take a photo or record a video.



- **Synchronisation with Windows Media Player**
Transfer music files to your phone directly from Windows Media Player.



- **Music player**
Play music files on your phone. You can use other phone functions while listening to music.



- **Java**
Enjoy Java-based games and download new games.



- **Digital data printing**
Print images, messages, and personal data directly from your phone.



- **Offline mode**
Switch your phone to offline mode to use its non-wireless functions while on an aeroplane.



- **Bluetooth**
Transfer media files and personal data, and connect to other devices using wireless Bluetooth technology.



- **Web browser**
Access the wireless web to get up-to-the-minute information and a wide variety of media content.



- **SOS message**
Send SOS messages to your family or friends for help in an emergency.

Contents

Unpack 6

Make sure you have each item

Get started 6

First steps to operating your phone

| | |
|-------------------------------------|----|
| Assemble and charge the phone | 6 |
| Power on or off..... | 7 |
| Phone layout..... | 7 |
| Keys and icons | 8 |
| Access menu functions | 11 |
| Enter text..... | 11 |
| Customise your phone..... | 12 |

Step outside the phone 14

Begin with call functions, camera, music player, web browser, and other special features

| | |
|----------------------------|----|
| Make or answer calls | 14 |
| Use the camera | 16 |
| Play music | 17 |
| Browse the web..... | 19 |

| | |
|--------------------------|----|
| Use Phonebook | 19 |
| Send messages..... | 20 |
| View messages | 21 |
| Use Bluetooth | 22 |
| Switch applications..... | 23 |

Menu functions 24

All menu options listed

Health and safety information 32

Overview of menu functions

To access Menu mode, press [OK] in Idle mode.

1 Call log

2 Phonebook

3 Music player

4 Internet

- 1 Go to homepage
- 2 Enter URL
- 3 Bookmarks
- 4 Saved pages
- 5 History
- 6 Advanced
- 7 Browser settings

5 Messages

- 1 Create message
- 2 Inbox
- 3 Email inbox
- 4 Drafts
- 5 Outbox
- 6 Sentbox
- 7 My folders
- 8 Templates
- 9 Delete all
- 10 Messages settings
- 11 SOS messages
- 12 Memory status

6 My files

- Images
- Videos
- Sounds
- Games and more
- Other files
- Memory status

7 Calendar

8 Camera

9 Google/Bluetooth[†]

* Applications

- 1 Memo
- 2 Task
- 3 Voice recorder
- 4 World clock
- 5 Calculator
- 6 Converter
- 7 Timer
- 8 Stopwatch
- 9 RSS reader
- 10 SIM application toolkit¹

0 Alarms

Settings

- 1 Phone profiles
- 2 Time & date
- 3 Display settings
- 4 Phone settings
- 5 Call settings
- 6 Security
- 7 Application settings
- 8 Network settings^{††}
- 9 Memory settings
- 10 Master reset

1. Available only if supported by your USIM or SIM card.

† If the Google service is not available, **Bluetooth** will display in menu 9 instead of appearing in **Network settings**.

†† If the Google service is not available, the order of submenus will change.

Unpack

Make sure you have each item

- Phone
- Travel adapter
- Battery
- User's Guide

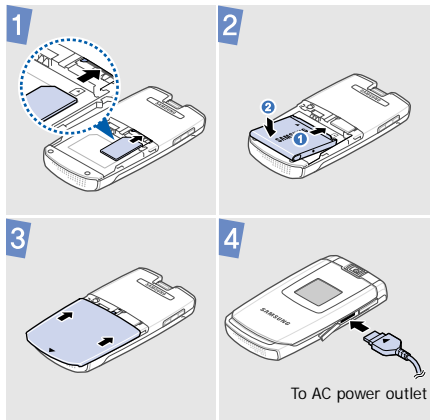
You can obtain various accessories from your local Samsung dealer.

- The items supplied with your phone and the accessories available at your Samsung dealer may vary, depending on your country or service provider.

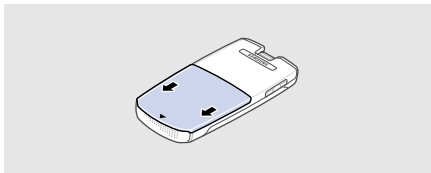
Get started

First steps to operating your phone

Assemble and charge the phone



Removing the battery cover



Power on or off

Switch on

1. Open the phone.
2. Press and hold [Power].
3. If necessary, enter the PIN and press <Confirm>.

Switch off

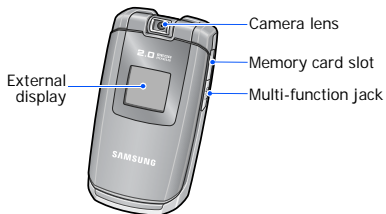
1. Open the phone.
2. Press and hold [Power].

Phone layout

With the phone open



With the phone closed



Keys and icons

Keys



Perform the function indicated on the bottom line of the display.



In Idle mode, access your favourite menus directly.
In Menu mode, scroll through menu options.



In Idle mode, access Menu mode.
In Menu mode, select the highlighted menu option or confirm input.



In Idle mode, turn on the camera.
In Camera mode, take a photo or record a video.
In the dialling screen, make a video call.



Open the application switch window to access other applications without exiting the current application.



Make or answer a call.
In Idle mode, retrieve the numbers recently dialled, missed, or received.



Delete characters from the display or items in an application.



Press and hold to switch the phone on or off.

End a call.

In Menu mode, cancel input and return the phone to Idle mode.



Enter numbers, letters, and some special characters.



In Idle mode, press and hold [1] to access your voicemail server. Press and hold [0] to enter an international call prefix.



Enter special characters or perform special functions.



In Idle mode, press and hold [#] to activate or deactivate the Silent profile. Press and hold [*] to enter a pause between numbers.



Adjust the phone volume.

Icons

The following icons may appear on the top line of the screen to indicate your phone's status. Depending on your country or service provider, the icons shown on the display may vary.



Signal strength



GPRS (2.5G) network



Connecting to GPRS (2.5G) network or transferring data in GPRS (2.5G) network



EDGE network



Connecting to EDGE network or transferring data in EDGE network



UMTS (3G) network



Connecting to UMTS (3G) network or transferring data in UMTS (3G) network



Voice call in progress



Out of your service area



Video call in progress



Out of your service area



Roaming network



Bluetooth active



Connected with PC via USB port



Browsing Internet



Connected to secured web page



Music playback in progress



Music playback paused



Music playback stopped



Memory card inserted



New message:

- : Text message
- : Multimedia message
- : Email
- : Voicemail
- : Push message
- : Configuration message



Alarm set




Profile setting:

- : Normal
- : Silent
- : Driving
- : Meeting
- : Outdoor
- : Offline



Battery power level

Access menu functions

| | |
|------------------|---|
| Select an option | <ol style="list-style-type: none">1. Press a desired soft key.2. Press the Navigation keys to move to the next or previous option.3. Press <Select>, <OK>, or [OK] to confirm the function displayed or option highlighted.4. Press <Back> to move up one level. Press [>] to return to Idle mode. |
| Use menu numbers | Press the number key corresponding to the option you want. |

Enter text

| | |
|----------------------------|---|
| Change the text input mode | <ul style="list-style-type: none">• Press and hold [*] to switch between T9 mode and ABC mode.• Press [*] to change case or switch to Number mode.• Press and hold [#] to switch to Symbol mode. |
| ABC mode | To enter a word: Press the appropriate key until the character you want appears on the display. |
| T9 mode | To enter a word: <ol style="list-style-type: none">1. Press [2] to [9] to start entering a word.2. Enter the whole word before editing or deleting characters. |

| | |
|------------------|---|
| | <p>3. When the word displays correctly, press [#] to insert a space. Otherwise, press [0] to display alternative word choices.</p> |
| Number mode | Press the keys corresponding to the digits you want. |
| Symbol mode | Press the keys corresponding to the symbols you want. |
| Other operations | <ul style="list-style-type: none">• Press [1] to enter punctuation marks or special characters.• Press [#] to insert a space.• Press the Navigation keys to move the cursor.• Press [C] to delete characters one by one.• Press and hold [C] to clear the entire display. |

Customise your phone

Display language

1. In Idle mode, press [OK] and select **Settings** → **Phone settings** → **Language** → **Screen text**.
2. Select a language.
3. Press <Save>.

Call ringer melody

To change the profile properties:

1. In Idle mode, press [OK] and select **Settings** → **Phone profiles**.
2. Scroll to the sound profile you are using.
3. Press <Options> and select **Edit**.
4. Select **Voice call ringtone** → a category → a ringtone.

-
5. Select **Video call ringtone** → a category → a ringtone.
 6. Press <Options> and select **Save**.

To change the sound profile:

1. In Idle mode, press [OK] and select **Settings** → **Phone profiles**.
2. Select the profile you want.

Key tone volume

In Idle mode, press [▲/▼] to adjust the key tone volume.

Idle mode wallpaper

1. In Idle mode, press [OK] and select **Settings** → **Display settings** → **Main display** → **Wallpaper** → **Pictures** → **Images**.
2. Select an image category.
3. Select an image.
4. Press <Set>.

Menu shortcuts

1. In Idle mode, press [OK] and select **Settings** → **Phone settings** → **Shortcuts**.
2. Select a key.
3. Select a menu to be assigned to the key.

Silent profile

You can activate the Silent profile to avoid disturbing other people. In Idle mode, press and hold [#].

Phone lock

1. In Idle mode, press [OK] and select **Settings** → **Security** → **Phone lock**.
2. Select **On**.
3. Enter a new 4- to 8-digit password and press <**Confirm**>.
4. Enter the new password again and press <**Confirm**>.

Step outside the phone

Begin with call functions, camera, music player, web browser, and other special features

Make or answer calls

Make a call

To make a voice call:

1. In Idle mode, enter an area code and phone number.
2. Press [↵].
Press [▲/▼] to adjust the volume.
3. Press [📞] to end the call.

To make a video call:

1. In Idle mode, enter an area code and phone number.
2. Press [📞/📠].
3. Press [📞] to end the call.

Answer a call

1. When the phone rings, open the phone. If the phone is already open, press [].
If it is a video call, press <**Show me**> to allow the caller to see you via the camera.
2. Press [] to end the call.

Use the speakerphone feature

During a voice call, press [**OK**] and then <**Yes**> to activate the speaker.
Press [**OK**] again to switch back to the earpiece.

Make a multi-party call

1. During a call, call the second participant.
The first call is put on hold.
2. Press <**Options**> and select **Join**.
3. Repeat step 1 and 2 to add more participants.
4. During a multi-party call:
 - Press <**Options**> and select **Split** to have a private conversation with one participant.
 - Press <**Options**> and select **End** → **Select participant** to drop one participant.
5. Press [] to end the multi-party call.

Use the camera

Take a photo

1. In Idle mode, press [] to turn on the camera.
2. Aim the lens at the subject and make any desired adjustments.
3. Press [OK] or [] to take a photo. The photo is saved automatically.
4. Press < > to take another photo.

View a photo

1. In Idle mode, press [OK] and select **My files** → **Images** → **My photos**.
2. Select the photo you want.

Record a video

1. In Idle mode, press [] to turn on the camera.
2. Press [1] to switch to Record mode.
3. Press [OK] or [] to start recording.
4. Press [OK] or [] to stop recording. The video is saved automatically.
5. Press <**Back**> to record another video.

View a video


1. In Idle mode, press [OK] and select **My files** → **Videos** → **My video clips**.
2. Select the video you want.

Play music

Prepare music files


Use these methods:

- Download from the wireless web.
- Download from a PC using the optional Samsung PC Studio. See Samsung PC Studio User's Guide.
- Receive via Bluetooth.
- Copy to a memory card and insert the card into the phone.
- Synchronise music files with Windows Media Player. See the next section.

 When you insert a memory card with a large amount of files, your phone might work rather slowly for a few minutes while database updates. This may also affect some phone functions. This problem is temporary and is not a phone defect.

Synchronise with Windows Media Player

You can copy music files to your phone by synchronising with Windows Media Player 11.

1. In Idle mode, press **[OK]** and select **Settings** → **Phone settings** → **PC connections** → **Media player**.
2. Press [] to return to Idle mode.
3. Connect your phone and PC with an optional PC data cable.
4. Select **Sync digital media files to this device** when a pop-up window appears on your PC.
5. Enter the name of your phone and click **Finish**.

6. Select and drag the music files you want to the sync list.
7. Click **Start Sync**.
8. When synchronisation is finished, disconnect the phone from the PC.

Play music files

1. In Idle mode, press [OK] and select **Music player**.
2. Select a music category → a music file.
3. During playback, use the following keys:
 - **OK**: pause or resume playback.
 - **Left**: restart playback. Press to return to the previous file within 3 seconds after the playback has started. Press and hold to scan backward in a file.

Create your playlist

4. Press [Down] to stop playback.
 - **Right**: skip to the next file. Press and hold to scan forward in a file.
 - **Up**: open the current playlist.
 - **▲/▼**: adjust the volume.
1. From the music player screen, press <**Options**> and select **Open playlist** → **All** → **Playlists**.
2. Press <**Options**> and select **Create playlist**.
3. Enter the title of the playlist and press <**Save**>.
4. Select the added playlist.
5. Press <**Options**> and select **Add** → a source.

-
6. Select a playlist or select the files you want and press **<OK>**.
 7. Press **[OK]** to play music.

Browse the web

Launch the web browser

In Idle mode, press **< [Planeta 3] >**. The homepage of your service provider opens.

Navigate the web

- To scroll through browser items, press **[Up]** or **[Down]**.
- To select an item, press **[OK]**.
- To return to the previous page, press **<Back>**.
- To access browser options, press **<Options>**.

Use Phonebook

Add a contact

1. In Idle mode, enter a phone number and press **<Options>**.
2. Select **Add to Phonebook** → a memory location → **New**.
3. For **Phone**, select a number type.
4. Specify contact information.
5. Press **[OK]** or press **<Options>** and select **Save** to save the contact.

Find a contact

1. In Idle mode, press **<P.Book>**.
2. Enter the first few letters of the name you want.
3. Select a contact.

4. Scroll to a number and press [**↩**] to dial or press [**OK**] and select **Edit** to edit contact information.

Send messages

Send a text message

1. In Idle mode, press [**OK**] and select **Messages** → **Create message** → **Message**.
2. Enter the message text.
3. Press [**Up**] to move to the recipient field.
4. Enter destination numbers.
5. Press <**Options**> and select **Send** to send the message.

Send a multimedia message

1. In Idle mode, press [**OK**] and select **Messages** → **Create message** → **Message**.
2. Enter the message text.
3. Press <**Options**> and select **Add item**, **Create item**, or **Add attachment**.
4. Add a media file, contact, calendar item, or bookmark item.
5. Press <**Options**> and select **Add subject**.
6. Enter the message subject.
7. Press [**Up**] to move to the recipient field.
8. Enter destination numbers or email addresses.
9. Press <**Options**> and select **Send** to send the message.

Send an email

1. In Idle mode, press [OK] and select **Messages** → **Create message** → **Email**.
2. Enter the email text.
3. Press <**Options**> and select **Add attachment** or **Create item**.
4. Add a media file, contact, calendar item, or bookmark item.
5. Press [Up] to move to the subject field.
6. Enter the email subject.
7. Press [Up] to move to the recipient field.
8. Enter email addresses.
9. Press <**Options**> and select **Send** to send the email.

View messages

View a text message

1. In Idle mode, press [OK] and select **Messages** → **Inbox**.
2. Select a text message.

View a multimedia message

1. In Idle mode, press [OK] and select **Messages** → **Inbox**.
2. Select a multimedia message.

View an email

1. In Idle mode, press [OK] and select **Messages** → **Email inbox**.
2. Press <**Options**> and select **Download**.
3. Select an email or a header.
4. If you selected a header, press <**Options**> and select **Retrieve** to view the body of the email.

Use Bluetooth

Your phone is equipped with Bluetooth technology, enabling you to connect the phone wirelessly to other Bluetooth devices and exchange data with them, talk hands-free, or control the phone remotely.

Turn on Bluetooth

1. In Idle mode, press [OK] and select **Settings**[‡] → **Network settings**[‡] → **Bluetooth** → **Activation** → **On**.

[‡] **Bluetooth** is available under **Network settings** if the Google service is available.

2. Select **My phone's visibility** → **On** to allow other devices to locate your phone.

Search for and pair with a Bluetooth device

1. In Idle mode, press [OK] and select **Settings**[‡] → **Network settings**[‡] → **Bluetooth** → **My devices** → **Search new device**.

[‡] **Bluetooth** is available under **Network settings** if the Google service is available.

2. Select a device.
3. Enter a Bluetooth PIN or the other device's Bluetooth PIN, if it has one, and press <OK>. When the owner of the other device enters the same code, pairing is complete.

Send data

1. Access an application, such as **Phonebook**, **My files**, **Calendar**, **Memo**, or **Task**.
2. Select an item.
3. Press **<Options>** and select **Send contact detail via**, **Send via**, or **Send** → **Bluetooth** or **Via bluetooth**.
4. Search for and select a device.
5. If necessary, enter the Bluetooth PIN and press **<OK>**.


Receive data

1. If necessary, enter a Bluetooth PIN and press **<OK>**.
2. Press **<Yes>** to confirm that you are willing to receive.

Switch applications

You can switch to other applications from a menu, without closing the menu screen you are using.


Switch to an application

1. While using a menu, press [].
2. Select an application.

Available applications

- **Call**: open the dialling screen.
- **Messages**: access the **Messages** menu.
- **Internet**: launch the web browser.
- **Music player**: open the music player screen.

Close all running applications

1. Press [].
2. Scroll to **End all?**
3. Press **<Yes>**.

Menu functions

All menu options listed

This section provides brief explanations of menu functions on your phone.

Call log

Check the most recent calls dialed, received, or missed.

Phonebook

Search for contact information stored in Phonebook.

Music player

Access and listen to all music files sorted by criteria. You can also make your own music playlists.

Internet

| Menu | Description |
|----------------|---|
| Go to homepage | Connect your phone to the network and load the homepage of the wireless web service provider. |
| Enter URL | Enter a URL address and access the associated web page. |
| Bookmarks | Save URL addresses in order to quickly access web pages. |
| Saved pages | Access the list of pages you have saved while online. |
| History | Access the list of pages you have accessed recently. |

| Menu | Description |
|------------------|---|
| Advanced | Clear the cache. Delete cookies or set whether or not they are stored. Change the settings for the web browser and access version and copyright information about it. |
| Browser settings | Select a connection profile to be used for accessing the wireless web. |

Messages

| Menu | Description |
|----------------|--|
| Create message | Create and send text, multimedia, or email messages. |

| Menu | Description |
|-------------|---|
| Inbox | Access messages that you have received. |
| Email inbox | Access emails that you have received. |
| Drafts | Access messages that you have saved to send at a later time. |
| Outbox | Access messages that the phone is attempting to send or has failed to send. |
| Sentbox | Access messages that you have sent. |
| My folders | Create new folders and organise your messages. |
| Templates | Make and use templates of frequently used messages or passages. |

| Menu | Description |
|-------------------|---|
| Delete all | Delete messages in each message folder all at once. |
| Messages settings | Set up various options for using the messaging services. |
| SOS messages | Specify options for sending and receiving an SOS message. You can send an SOS message by pressing [▲/▼] 4 times when the phone is closed. |
| Memory status | Check information about the memory currently in use. |

My files

| Menu | Description |
|-------------------------------------|--|
| Images, Videos, Sounds, Other files | Access media files and other files stored in the phone's memory. |
| Games and more | Access the Java games and download Java applications. |
| Memory status | Check information about the memory currently in use. |

Calendar

Keep track of your schedule.

Camera

Use the camera embedded in your phone to take photos and record videos.

Google/Bluetooth

Depending on your country or service provider, you may have one of these two menus here:

- **Google:** Launch the Google search engine to find information, news, images, or local services from around the web.
- **Bluetooth:** Connect the phone wirelessly to other Bluetooth devices.

Applications

| Menu | Description |
|----------------|---|
| Memo | Make memos for things that are important and manage them. |
| Task | Make a list of tasks you need to complete. |
| Voice recorder | Record voice memos and any other sounds. |

| Menu | Description |
|-------------|--|
| World clock | Set your local time zone and find out the current time in another part of the world. |
| Calculator | Perform arithmetic functions. |
| Converter | Do conversions, such as length and temperature. |
| Timer | Set a period of time for the phone to count down. |
| Stopwatch | Measure elapsed time. |
| RSS reader | Save your favourite news channels or blogs to libraries and get the latest news and updated information from them whenever you want. |

| Menu | Description |
|-------------------------|---|
| SIM application toolkit | Use a variety of additional services offered by your service provider. Depending on your USIM or SIM card, this menu may be available but labelled differently. |

Alarms

Set a wake-up call to wake you up in the morning or an alarm to alert you to an event at a specific time.

Settings

| Menu | Description |
|----------------|--|
| Phone profiles | Change the sound settings of the phone for different events or situations. |

| Menu | Description |
|--|---|
| Time & date | Change the time and date displayed on your phone. |
| Display settings → Main display → Wallpaper | Change the background image that is displayed in Idle mode. |
| Display settings → Main display → Greeting message | Enter the greeting that is displayed briefly on the main display when the phone is switched on. |
| Display settings → Main display → Main menu style | Select a display style for the main menu screen. |
| Display settings → Main display → Pop up list menu | Display the pop-up list that shows the menu options. |

| Menu | Description |
|---|---|
| Display settings → Main display → Dialling display | Customise the settings for the main display while dialling. |
| Display settings → Main display → Clock display | Select a clock type to be displayed on the idle screen. |
| Display settings → Cover display → Wallpaper | Change the image that is displayed on the external display. |
| Display settings → Cover display → Greeting message | Enter the greeting that is displayed on the external display briefly when the phone is switched on. |
| Display settings → Light settings → LCD brightness | Adjust the brightness of the main display for varying lighting conditions. |
| Display settings → Light settings → Backlight time | Select the length of time the backlight or main display stays on when the phone is not used. |

| Menu | Description |
|--|--|
| Display settings → Light settings → Keypad light | Set how the phone controls the use of the keypad light. |
| Phone settings → Language | Select a language for the display text or T9 input mode. |
| Phone settings → Shortcuts | Use the Navigation keys as shortcuts to access specific menus directly from Idle mode. |
| Phone settings → Own number | Check your phone numbers or assign a name to each of the numbers. |
| Phone settings → Volume key function | Set how the phone reacts if you press and hold [/] when a call comes in. |
| Phone settings → Camera key | Set a default function for []. |

| Menu | Description |
|------------------------------------|--|
| Phone settings → PC connections | Select a USB mode that will be used when you connect your phone to another device via USB interface. |
| Call settings | Set options for call functions. |
| Security → Phone lock | Activate your phone password to protect your phone against unauthorised use. |
| Security → SIM lock | Set the phone to work only with the current USIM or SIM card by assigning a SIM lock password. |
| Security → PIN lock | Activate your PIN to protect your USIM or SIM card against unauthorised use. |

| Menu | Description |
|-------------------------------------|---|
| Security → Privacy lock | Lock access to messages, files, call logs, contacts, calendar, memos, or tasks. |
| Security → Fixed dialling mode | Set the phone to restrict calls to a limited set of phone numbers, if supported by your USIM or SIM card. |
| Security → Change phone password | Change the phone password. |
| Security → Change PIN code | Change the PIN. |
| Security → Change PIN2 code | Change the PIN2. |

| Menu | Description |
|--|---|
| Security → Mobile tracker | Set the phone to send the preset tracking message to your family or friends when someone tries to use your phone with another USIM or SIM card. This feature may be unavailable due to certain features supported by your service provider. |
| Application settings | Customise the settings for using applications available on the phone. |
| Network settings → Bluetooth [‡] | Connect the phone wirelessly to other Bluetooth devices. |
| Network settings → Network selection | Select the network to be used while roaming outside of your home area, or let the network be chosen automatically. |

| Menu | Description |
|--|---|
| Network settings → Network mode | Change to an appropriate band when you travel abroad. |
| Network settings → Preferred networks | Add a new network to your preferred network list, if your USIM or SIM card supports it. |
| Network settings → Connections | Create and customise the profiles containing the settings for connecting your phone to the network. |
| Memory settings | Check information about the memory currently in use. You can also clear the memory. |
| Master reset | Reset the phone's settings you have changed. |

[‡] If the Google service is not available depending on your country or service provider, **Bluetooth** will move to menu 9.

SAR certification information

This phone meets European Union (EU) requirements concerning exposure to radio waves.

Your mobile phone is a radio transmitter and receiver. It is designed and manufactured to not exceed the limits for exposure to radio-frequency (RF) energy, as recommended by the EU Council. These limits are part of comprehensive guidelines and establish permitted levels of RF energy for the general population. The guidelines were developed by independent scientific organisations through the periodic and thorough evaluation of scientific studies. The limits include a substantial safety margin designed to ensure the safety of all persons, regardless of age and health.

The exposure standard for mobile phones employs a unit of measurement known as Specific Absorption Rate (SAR). The SAR limit recommended by the EU Council is 2.0 W/kg.¹

1. The SAR limit for mobile phones used by the public is 2.0 watts/kilogram (W/kg) averaged over ten grams of body tissue. The limit incorporates a substantial margin of safety to give additional protection for the public and to account for any variations in measurements. The SAR values may vary, depending on national reporting requirements and the network band.

The highest SAR value for this model phone was 0.314 W/kg.

SAR tests are conducted using standard operating positions with the phone transmitting at its highest certified power level in all tested frequency bands. Although the SAR is determined at the highest certified power level, the actual SAR level of the phone while operating can be well below the maximum value. This is because the phone is designed to operate at multiple power levels so as to use only the power required to reach the network. In general, the closer you are to a base station, the lower the power output of the phone.

Before a new model phone is available for sale to the public, compliance with the European R&TTE Directive must be shown. This directive includes as one of its essential requirements the protection of the health and safety of the user and any other person.

Precautions when using batteries

- Never use a charger or battery that is damaged in any way.
- Use the battery only for its intended purpose.
- If you use the phone near the network's base station, it uses less power. Talk and standby time are greatly affected by the signal strength on the cellular network and the parameters set by the service provider.

- Battery charging time depends on the remaining battery charge, the type of battery, and the charger used. The battery can be charged and discharged hundreds of times, but it will gradually wear out. When the operation time is noticeably shorter than normal, it is time to buy a new battery.
- If left unused, a fully charged battery will discharge itself over time.
- Use only Samsung-approved batteries, and recharge your battery only with Samsung-approved chargers. Disconnect the charger from the power source when it is not in use. Do not leave the battery connected to a charger for more than a week, since overcharging may shorten its life.
- Extreme temperatures will affect the charging capacity of your battery: it may require cooling or warming first.
- Do not leave the battery in hot or cold places because the capacity and lifetime of the battery will be reduced. Try to keep the battery at room temperature. A phone with a hot or cold battery may not work temporarily, even when the battery is fully charged. Li-ion batteries are particularly affected by temperatures below 0° C (32° F).
- Do not short-circuit the battery. Accidental short-circuiting can occur when a metallic object like a coin, clip or pen causes a direct connection between the + and – terminals of the battery (metal strips on the battery). For example, do not carry a spare battery in a pocket or bag where the battery may contact metal objects. Short-circuiting the terminals may damage the battery or the object causing the short-circuiting.
- Dispose of used batteries in accordance with local regulations. Always recycle. Do not dispose of batteries in a fire.

Road safety

Your wireless phone gives you the powerful ability to communicate by voice, almost anywhere, anytime. But an important responsibility accompanies the benefits of wireless phones, one that every user must uphold.

When you are driving a car, driving is your first responsibility. When using your wireless phone while driving, follow local regulations in the country or region you are in.

Operating environment

Remember to follow any special regulations in force in the area you are in, and always switch off your phone whenever it is forbidden to use it, or when it may cause interference or danger.

When connecting the phone or any accessory to another device, read its user's guide for detailed safety instructions. Do not connect incompatible products.

As with other mobile radio transmitting equipment, users are advised that for the satisfactory operation of the equipment and for the safety of personnel, it is recommended that the equipment should only be used in the normal operating position (held to your ear with the antenna pointing over your shoulder).

Electronic devices

Most modern electronic equipment is shielded from radio frequency (RF) signals. However, certain electronic equipment may not be shielded against the RF signals from your wireless phone. Consult the manufacturer to discuss alternatives.

Pacemakers

Pacemaker manufacturers recommend that a minimum distance of 15 cm (6 inches) be maintained between a wireless phone and a pacemaker to avoid potential interference with the pacemaker. These recommendations are consistent with the independent research and recommendations of Wireless Technology Research.

If you have any reason to suspect that interference is taking place, switch off your phone immediately.

Hearing aids

Some digital wireless phones may interfere with some hearing aids. In the event of such interference, you may wish to consult your hearing aid manufacturer to discuss alternatives.

Other medical devices

If you use any other personal medical devices, consult the manufacturer of your device to determine if it is adequately shielded from external RF energy.

Your physician may be able to assist you in obtaining this information.

Switch off your phone in health care facilities when regulations posted in these areas instruct you to do so.

Vehicles

RF signals may affect improperly installed or inadequately shielded electronic systems in motor vehicles. Check with the manufacturer or its representative regarding your vehicle.

You should also consult the manufacturer of any equipment that has been added to your vehicle.

Posted facilities

Switch off your phone in any facility where posted notices require you to do so.

Potentially explosive environments

Switch off your phone when in any area with a potentially explosive atmosphere, and obey all signs and instructions. Sparks in such areas could cause an explosion or fire resulting in bodily injury or even death.

Users are advised to switch off the phone while at a refuelling point (service station). Users are reminded of the need to observe restrictions on the use of radio equipment in fuel depots (fuel storage and distribution areas), chemical plants, or where blasting operations are in progress.


Areas with a potentially explosive atmosphere are often but not always clearly marked. They include the areas below decks on boats, chemical transfer or storage facilities, vehicles using liquefied petroleum gas, such as propane or butane, areas where the air contains chemicals or particles, such as grain, dust or metal powders, and any other area where you would normally be advised to turn off your vehicle engine.

Emergency calls

This phone, like any wireless phone, operates using radio signals, wireless, and landline networks as well as user-programmed functions, which cannot guarantee connection in all conditions. Therefore, you should never rely solely on any wireless phone for essential communications like medical emergencies.

To make or receive calls, the phone must be switched on and in a service area with adequate signal strength. Emergency calls may not be possible on all wireless phone networks or when certain network services and/or phone features are in use. Check with local service providers.

To make an emergency call:

1. Switch on the phone.
2. Key in the emergency number for your present location. Emergency numbers vary by location.
3. Press [].

Certain features like Call Barring may need to be deactivated before you can make an emergency call. Consult this document and your local cellular service provider.

Other important safety information

- Only qualified personnel should service the phone or install the phone in a vehicle. Faulty installation or service may be dangerous and may invalidate any warranty applicable to the device.
- Check regularly that all wireless phone equipment in your vehicle is mounted and operating properly.
- Do not store or carry flammable liquids, gases, or explosive materials in the same compartment as the phone, its parts, or accessories.

- For vehicles equipped with an air bag, remember that an air bag inflates with great force. Do not place objects, including installed or portable wireless equipment, in the area over the air bag or in the air bag deployment area. Improperly installed wireless equipment could result in serious injury if the air bag inflates.
- Switch off your phone before boarding an aircraft. It is dangerous and illegal to use wireless phones in an aircraft because they can interfere with the operation of the aircraft.
- Failure to observe these instructions may lead to the suspension or denial of telephone services to the offender, or legal action, or both.
- Do not use the phone with a wet hand. Doing so may cause an electric shock to you or damage to the phone.
- Do not use or store the phone in dusty, dirty areas, as its moving parts may be damaged.
- Do not store the phone in hot areas. High temperatures can shorten the life of electronic devices, damage batteries, and warp or melt certain plastics.
- Do not store the phone in cold areas. When the phone warms up to its normal operating temperature, moisture can form inside the phone, which may damage the phone's electronic circuit boards.

Care and maintenance

Your phone is a product of superior design and craftsmanship and should be treated with care. The suggestions below will help you fulfill any warranty obligations and allow you to enjoy this product for many years.

- Keep your phone and all its parts and accessories out of the reach of small children and pets. They may accidentally damage these things or choke on small parts.
- Keep the phone dry. Precipitation, humidity, and liquids contain minerals that corrode electronic circuits.
- Do not drop, knock, or shake the phone. Rough handling can break internal circuit boards.
- Do not use harsh chemicals, cleaning solvents, or strong detergents to clean the phone. Wipe it with a soft cloth.
- Do not paint the phone. Paint can clog the device's moving parts and prevent proper operation.
- Do not put the phone in or on heating devices, such as a microwave oven, stove, or radiator. The phone may explode when overheated.

- When the phone or battery gets wet, the label indicating water damage inside the phone changes colour. In this case, phone repairs are no longer guaranteed by the manufacturer's warranty, even if the warranty for your phone has not expired.
- If your phone has a flash or light, do not use it too close to the eyes of people or animals. This may cause damage to their eyes.
- Use only the supplied or an approved replacement antenna. Unauthorised antennas or modified accessories may damage the phone and violate regulations governing radio devices.
- If the phone, battery, charger, or any accessory is not working properly, take it to your nearest qualified service facility. The personnel there will assist you, and if necessary, arrange for service.

Declaration of Conformity (R&TTE)

We,

Samsung Electronics

declare under our sole responsibility that the product

GSM Mobile Phone : SGH-J630

to which this declaration relates, is in conformity with the following standards and/or other normative documents,

| | |
|---------------|---------------------------------|
| SAFETY | EN 60950- 1 : 2001+A11:2004 |
| | EN 301 489- 01 V1.5.1 (11-2004) |
| | EN 301 489- 07 V1.2.1 (08-2002) |
| EMC | EN 301 489- 17 V1.2.1 (08-2002) |
| | EN 301 489- 24 V1.2.1 (11-2002) |
| SAR | EN 50360 : 2001 |
| | EN 62209-1 : 2006 |
| RADIO | EN 301 511 V9.0.2 (03-2003) |
| | EN 300 328 V1.6.1 (11-2004) |
| | EN 301 908- 1 V2.2.1 (10-2003) |
| | EN 301 908- 2 V3.2.1 (02-2007) |

We hereby declare that [all essential radio test suites have been carried out and that] the above named product is in conformity to all the essential requirements of Directive 1999/5/EC.

The conformity assessment procedure referred to in Article 10 and detailed in Annex[IV] of Directive 1999/5/EC has been followed with the involvement of the following Notified Body(ies):

BABT, Balfour House, Churchfield Road,
Walton-on-Thames, Surrey, KT12 2TD, UK*
Identification mark: 0168

The technical documentation kept at :

Samsung Electronics QA Lab.

CE0168

which will be made available upon request.
(Representative in the EU)

Samsung Electronics Euro QA Lab.
Blackbushe Business Park, Saxony Way,
Yateley, Hampshire, GU46 6GG, UK*

2007.11.15

(place and date of issue)

Yong-Sang Park / S. Manager

(name and signature of authorised person)



* It is not the address of Samsung Service Centre. For the address or the phone number of Samsung Service Centre, see the warranty card or contact the retailer where you purchased your phone.