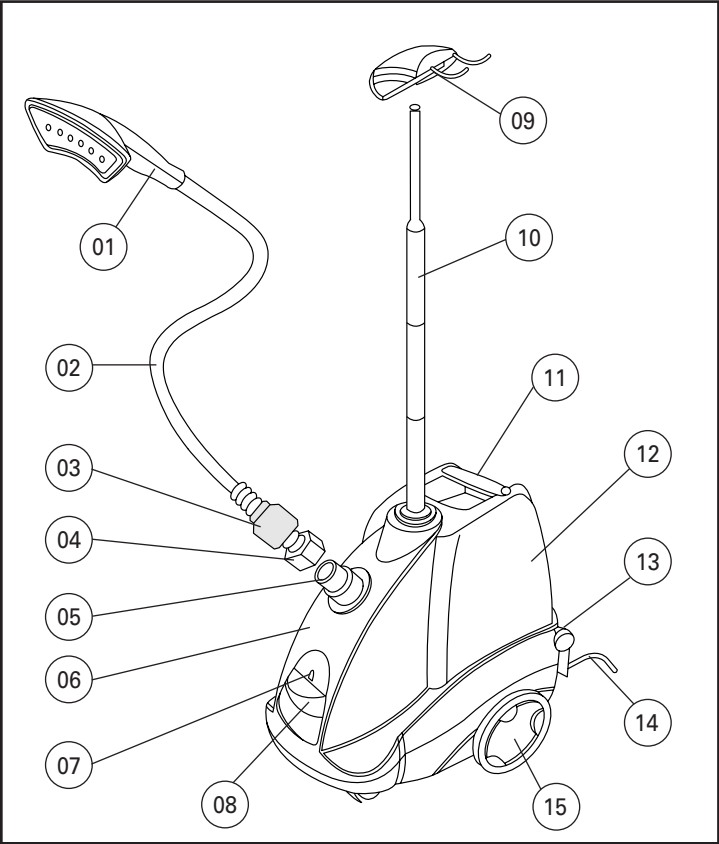
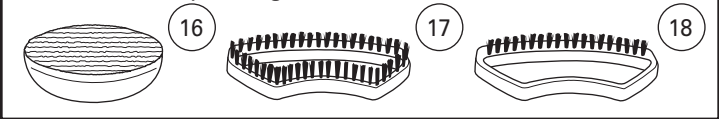


Rowenta

Commercial Garment Steamer Instructions for Use



Accessories (depending on model)



- | | |
|-----------------------|---------------------|
| 01 Steam head | 10 Support rod |
| 02 Hose | 11 Container handle |
| 03 Bolt cover | 12 Water container |
| 04 Bolt | 13 Container lock |
| 05 Hose connect point | 14 Power cord |
| 06 Main unit | 15 Wheels |
| 07 Power indicator | 16 Lint brush |
| 08 Power switch | 17 Upholstery brush |
| 09 Hanger head | 18 Fabric brush |

IMPORTANT SAFETY INSTRUCTIONS

When using your appliance, basic precautions should always be followed, including the following:

Read all instructions before use.

1. Use appliance for its intended use only.
2. Children should not use this appliance. Close supervision is necessary when any appliance is used near children. Do not leave appliance unattended while connected to a power source.
3. Do not operate any appliance with a damaged cord, plug or steam hose or after the appliance malfunctions, or is dropped or damaged in any manner. To reduce the risk of electric shock, do not disassemble or attempt to repair the appliance. Return appliance to nearest authorized service center for examination, repair or adjustment.
4. To reduce the risk of contact with hot water emitting from steam vents, check appliance before each use by holding it away from body and operating.
5. Steam only in an up and down vertical motion. Never use steamer in a horizontal position or tilt into a backward position, this may result in water discharge.
6. To reduce the risk of electric shock, do not immerse the appliance in water or other liquids.
7. Appliance should always be turned off before unplugging. Never yank cord to disconnect from outlet, instead grasp plug and pull to disconnect.
8. Do not allow cord to touch hot surfaces. Let appliance cool completely before putting away. Loop cord loosely around appliance when storing.
9. Do not let power cord contact sharp edges or hot surfaces.
10. Do not try to fasten the hose adapter during operation. Scalding may occur if the hose adapter is removed.
11. Always disconnect appliance from electrical outlet when filling with water, emptying or when not in use.
12. Do not attempt to hang up the unit using the hose.
13. The use of accessory attachments is not recommended by Rowenta and may result in fire, electric shock or personal injury.
14. Burns could occur from touching hot parts, hot water or steam. Use care when you empty a steam appliance. There may be hot water in the reservoir.
15. Indoor use only.

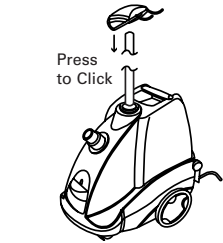
SPECIAL INSTRUCTIONS

1. This is a 1500 watt appliance. To avoid a circuit overload, do not operate a high wattage appliance on the same circuit.
2. If an extension cord is absolutely necessary, the marked electrical rating should be at least as great as the electrical rating of the appliance. Cords rated for less amperage may overheat. Care should be taken to arrange the cord so that it cannot be pulled or tripped over.
3. Do not cut or attempt to extend the steaming hose.

SAVE THESE INSTRUCTIONS

BEFORE USE

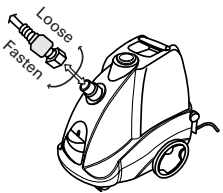
- Please read the instructions for use and **Important Safeguards** carefully.
- Remove any packaging from the appliance.
- Do not plug in or turn on until assembly is complete.



- Assemble the support rod by screwing the individual pieces together.

- Insert support rod in the hole on top of the main unit and screw it in a clockwise direction by hand until it is firmly in place.

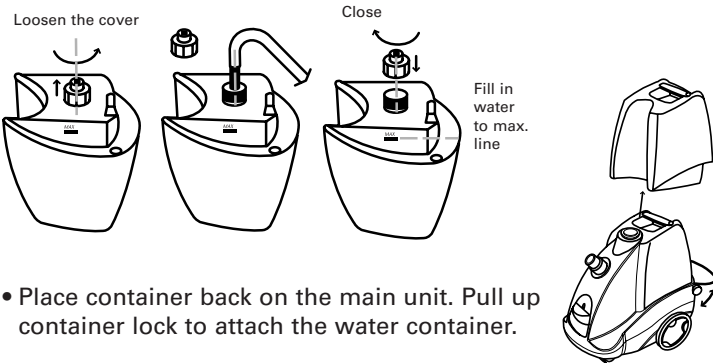
- Attach the hanger head to the rod and secure by pressing down until it clicks in place.



- Slide metal coil and black bolt cover up to expose bolt on hose. Attach hose to the connect point and tighten bolt firmly in a counter clockwise direction with a 1 1/4" wrench. Slide coil and cover back over bolt.

FILLING WITH WATER

- The steamer can be used with REGULAR TAP WATER (up to 12 grains of hardness). If your water is harder than this, Rowenta recommends mixing half tap water with half distilled water which reduces the hardness; or just use inexpensive bottled spring water; or 100% distilled water.
- Battery water and water containing additives (such as starch, perfume or fabric conditioner) may not be used in the steamer. Such additives can affect the properties of the steam and can form deposits.
- Be sure that unit is unplugged. Remove water container from main unit by releasing container lock and pulling up. Unscrew the cover and fill. Do not fill above the max line on the water tank. Water container capacity is 3.4 quarts.



- Place container back on the main unit. Pull up container lock to attach the water container.

Some assembly required. You will need a 1 1/4 inch wrench.

TIPS

- Check the fabric’s label for recommendations.
- Test fabric for color fastness in an unobtrusive part of the garment (inner seam).
- Do not touch silk or velvet with steam head.
- Some articles can be steamed better from the underside.
- If steaming in a low position near floor, straighten hose up and out frequently to keep clear of condensation. If hose becomes clogged, it will make a gurgling noise.
- Heavier fabrics may require repeated steaming.
- Exercise caution at all times.

USE

Warning: Never steam clothes while they are being worn. Hose and steam head will become hot during use. This is normal. Use caution and avoid prolonged contact.

- Place steamer on a flat, level surface. Do not block vents on bottom of unit.
- Plug in cord and activate the power switch by hand or foot. The power indicator light will illuminate once steamer is turned on.
- Wait for the steam to come out. It will take approximately 3 minutes.
- Put garment onto the hanger head. Grasp the steam head with the steam vents pointing away from you. Start steaming by touching material lightly with steaming head and moving in an up/down vertical motion. Begin at the bottom of the garment and move in an upward direction. Steam with hose in an upright position. This allows any condensation to flow back into the steamer.
- During operation, the steamer hose may make a gurgling noise. This is a normal result of condensation. If it begins to gurgle, extend hose up and out to move excess moisture back into the base.

DO NOT ALLOW STEAMER TO RUN DRY

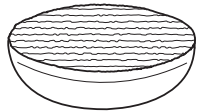
ACCESSORIES (depending on model)

Reminder: When using accessories steam only in an up and down vertical motion. Never use steamer in a horizontal position and never tilt it in a backward position.

Before using any of the accessories on upholstery or garments, be sure to consult the manufacturer regarding their recommendations. We also recommend testing on an unobtrusive area.

Lint Pad

- The lint pad removes hair, lint and animal fur for a professional finish.
- To use the lint pad, slowly brush the clothing with the grain or nap of the fabric.
 - The pad can be cleaned by brushing in the opposite direction. We recommend cleaning on an old cloth that can be discarded.
- (Note: The lint pad does not attach to the steamer.)



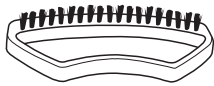
Upholstery Brush

- The upholstery brush is used to aid steam penetration into difficult, heavy fabrics for faster results.
- Be sure unit is unplugged and completely cool before attaching accessories.
 - Attach the upholstery brush to the steam head by lining up the bottom of the brush with the bottom of the steam head. Gently push the top of the brush into place on the steam head until it clicks into place.
 - Gently brush the area to be steamed with the grain or nap of the fabric.
 - Remove the upholstery brush once unit is unplugged and completely cool. Remove it by pressing on the release button on top of brush while pulling it forward.



Fabric Brush

- The fabric brush opens the weave of the fabric for better steam penetration.
- Be sure unit is unplugged and completely cool before attaching accessories.
 - Attach the fabric brush to the steam head by lining up the bottom of the brush with the bottom of the steam head. Gently push the top of the brush into place on the steam head until it clicks into place.
 - Gently brush the area to be steamed with the grain or nap of the fabric.
 - Remove the upholstery brush once unit is unplugged and completely cool. Remove it by pressing on the release button on top of brush while pulling it forward.



AFTER USE

- After using the steamer, switch the power switch to the off position (power indicator light will go out) and unplug the appliance. Empty water container when not in use.
- Hang steam head in an upright position in hanger head when not in use.
- Do not carry the steamer by the water container handle. Instead roll unit to storage area or carry from underneath the main unit.

Warning: Never touch the steam head until it cools completely.

CLEANING

Remove water container and clean the main unit with a damp cloth. To maintain maximum performance, your steamer must be descaled occasionally. The descaling intervals will depend on the water quality and the frequency of use. The unit should be descaled at least once a year or every 100 hours of use. For descaling proceed as follows:

1. Unplug the unit and remove water container from main unit by releasing container lock and pulling up.
2. Fill it with fresh water and shake vigorously to remove any scale. Pour out the water and repeat if necessary.
3. Purchase a quality decalcifier agent and follow the instructions of the manufacturer for the proper ratio of the mixture to water and use.
4. After filling the water container turn it up and down to descale.
5. Attach reservoir to unit, plug in and switch on.
6. Let the appliance run until the water container is almost empty and do not steam any clothing with this mixture.
7. Unplug and detach the water container. Rinse it with fresh water.
8. Fill water container with fresh water and repeat steps 5 and 6.

Note: If after descaling you believe that there is still buildup in the boiler, repeat steps 1-8.

In the interest of improving products, Rowenta reserves the right to change specifications without prior notice.

LIMITED COMMERCIAL WARRANTY

Rowenta commercial products are warranted against defects in material and workmanship for 6 months from the initial date of purchase. During this period, any Rowenta product owned by the original purchaser that, upon inspection by Rowenta, is proved defective, will be repaired or replaced, at Rowenta’s option, without charge to the owner. If a replacement product is sent, it will carry the remaining warranty of the original product. This warranty does not apply to any defect arising from a buyer’s or user’s misuse of the product, willful damage to the product, negligence, failure to follow Rowenta’s instructions, use on current or voltage other than that stamped on the product, normal wear and tear, or alteration or repair not authorized by Rowenta. Repair or disassembly by anyone other than a Rowenta authorized service center will void the warranty.

THE WARRANTIES SET FORTH HEREIN ARE EXCLUSIVE AND NO OTHER WARRANTIES, EXPRESS OR IMPLIED, INCLUDING, WITHOUT LIMITATION, ANY WARRANTY OF MERCHANTABILITY OR FITNESS FOR A PARTICULAR PURPOSE OR USE ARE MADE BY ROWENTA OR ARE AUTHORIZED TO BE MADE WITH RESPECT TO ITS PRODUCTS. ROWENTA’S SOLE OBLIGATION IN THE EVENT OF A DEFECTIVE PRODUCT SHALL BE TO REPAIR OR REPLACE, IN ROWENTA’S SOLE DISCRETION, THE DEFECTIVE PRODUCT. IN NO EVENT SHALL ROWENTA BE LIABLE FOR ANY INDIRECT, SPECIAL, INCIDENTAL OR CONSEQUENTIAL LOSSES OR DAMAGES (INCLUDING BUT NOT LIMITED TO INTERRUPTION OF BUSINESS OR LOSS OF BUSINESS OR PROFIT) RESULTING FROM THE USE OF OR INABILITY TO USE THE PRODUCT, ANY BREACH OF WARRANTY OR ANY DEFECT IN THE PRODUCT EVEN IF ROWENTA SHALL HAVE BEEN ADVISED OF THE POSSIBILITY OF SUCH POTENTIAL LOSSES OR DAMAGES.

All purchases of Rowenta products shall be governed by and interpreted under the laws of the State of Massachusetts, U.S.A., excluding (i) its choice of law rules and (ii) the United Nations Convention on the International Sale of Goods. The federal or state courts located in Middlesex County, Massachusetts, shall have exclusive jurisdiction over all claims or actions arising out of or related to this limited warranty or the purchase of Rowenta products. If you believe your product is defective, bring the product (or send it, postage prepaid) along with proof of purchase to the nearest authorized Rowenta Service Center (see below). If you send the product, please include a letter explaining the nature of the claimed defect.

Rowenta Inc.
196 Boston Avenue
Medford, MA 02155 U.S.A.
Tel: (781) 396-0600
www.rowentausa.com

ABOVE ADDRESS IS AN OFFICE LOCATION ONLY

If your appliance needs service, ship the product to your nearest regional service center. Be sure to put your name on the outside of the shipping box (no P.O. boxes please). If in warranty, Rowenta will repair or replace the product at their discretion. If the product is out of warranty, you will be advised of the cost of repair before any work begins.

Our main service centers are listed below:

Turnpike Appliance 3495A Lawson Blvd. Oceanside, NY 11572 516-483-5596	Authorized Appliance 1644 West Ogden Ave. Downers Grove, IL 60515 630-852-1550
---	---

Service center information is subject to change. Please visit our website at: www.rowentausa.com or call our service center information line at: 781-306-4620 for current information and listings in California.