



BKK 2262 Y

Hand Blender Set
User Manual

BEKO

Read this manual prior to initial operation of the product!

Dear Customer,

We hope that your product, which has been manufactured in modern facilities and passed through a strict quality control procedure, will give you very good results.

We advise you to read through this manual carefully before using your product and keep it for future reference.

The User Manual will help you use your machine in a fast and safe way.

- Read the User Manual before installing and starting your product.
- In particular, follow the instructions related to safety.
- Keep this User Manual within easy reach for future reference.
- Also read all additional documents supplied with this product.

Remember that this User Manual is also applicable for several other models. Differences between models will be identified in the manual.



This product has been produced in environmentally friendly, modern facilities



CONTENTS

1 Safety Warnings	2
2 Technical Specifications of Appliance	3
3 Operating the Appliance	4-7
4 Cleaning and Care	8

1 Safety Warnings

- Please read the user guide before installing parts and operating the appliance.
- Your appliance is intended for only household use. It is not a professional appliance.
- Keep the appliance out of reach of children.
- Unplug the appliance during cleaning and when it is not in use.
- Chopping blade is very sharp. Hold it carefully from the plastic part while unpacking, during use, after use and while cleaning.
- Before the first use, please read cleaning and care section of this user guide and clean your appliance.
- Do not operate you appliance's accessories when the appliance is empty or when there is no material in it.
- Your appliance is only compatible with the supplied accessories. Never use accessories of other appliances.
- Do not operate your appliance for a long time, operate it with short intervals.
- If power cable is damaged, it should be replaced by authorized service.
- Your appliance must not be used by persons (including children) with reduced physical (aural or visual), sensory or mental capabilities, or lack of experience and knowledge, unless they have been given supervision by a person responsible for their safety.
- Children must be supervised when they are using the appliance and they should not be allowed to tamper with it.

Caution!

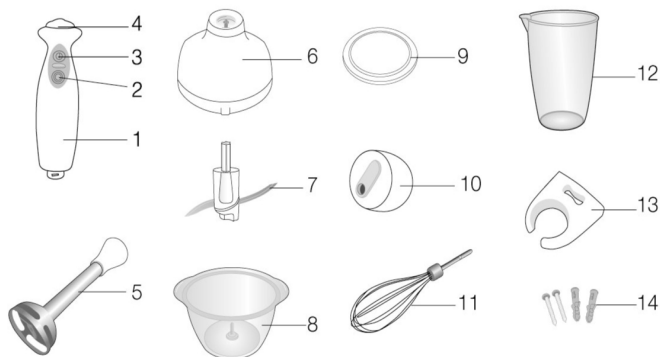
Before replacing the accessories or reaching the movable parts when the appliance is in use, you must remove your hand from the operating button of the appliance, wait for the motor to stop completely and unplug the appliance.

Read the user guide completely and thoroughly including warranty section before starting to use your appliance.

Please keep the original invoice and its copy for future reference regarding warranty issues.

This appliance is intended for domestic use.

2 Technical Specifications of Appliance



- 1- Motor casing
- 2- Turbo operating button
- 3- Operating button with speed setting
- 4- Fixed upper lid
- 5- Metal blending shaft
- 6- Glass container lid
- 7- Chopping blade
- 8- Glass container
- 9- Glass container base
- 10- Whisker operating cap
- 11- Whisker
- 12- Beaker
- 13- Wall hanger
- 14- Wall hanger screws and bolts

Voltage: 230 V ~ 50 Hz

Insulation class: □

Size: ø 170 x 180 x 400 mm.

Power : 700 W max.

Capacity of glass container : 900 ml.max.

Net weight : 2034 gr.

Markings on the appliance or the values stated in print documents supplied with the appliance are values obtained under laboratory conditions as per relevant standards. These values may vary according to the usage of the appliance and ambient conditions.

3 Using the Appliance

Chopping and Blending with Chopping Blade in Glass Container:

Caution!

Take the following into consideration before, during and after using the chopper;

- Never operate the chopping blade outside of the glass container; it is dangerous.
- When you need to lift the motor casing in blending process (to check if the food is chopped enough or after finishing the blending), wait for the motor to stop completely; unplug the appliance and remove the motor casing from container together with the glass container's lid. Make sure that the blade stays in the glass container.
- Do not operate your appliance on a wet surface or when it is empty.
- Do not put more than recommended food in the glass container; otherwise you may damage the plastic blade carrier.
- If you wish to cook the food with the glass container, you may cook it only in microwave. Gas, electric or other type of ovens may damage centering pin.

- Never use the glass container on flaming surfaces such as gas hobs, electrical hobs and etc.; otherwise, centering pin may come loose and cause failure.

- Do not chop frozen food or frozen bread directly; let them thaw before putting in the glass container and chopping.

- Do not attempt to chop nuts with their shells on.

- Make sure that the meat is not bony.

Usage:

Please follow the order below. Place the glass container base on a flat surface and put the glass container on the base. Seat the blade on the centering pin (Figure 1).

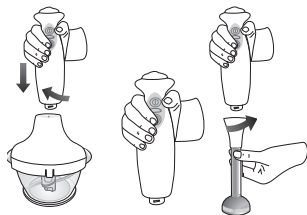


Figure 1

Put the food to be chopped or blended in the container. Place the lid on the glass container as shown in the figure and ensure that tabs are locked in the glass (Figure 2a-2b).

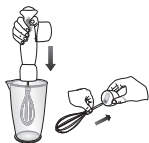


Figure 2a



Figure 2b

If you start the appliance before locking the tabs in the glass, blade may get damaged. Make sure that the lid is safely fixed on the glass container before starting the motor.

Before plugging in the appliance, place motor casing on the glass container's lid and turn it in the direction of arrow until it is seated securely. Stop screwing when it is seated (Figure 3). Do not force the motor casing. This may cause abrasion in screw threads. Plug in the appliance, press TURBO operating button or regular operating button to start the appliance (Figure 4).

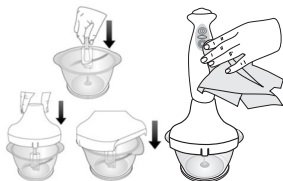


Figure 3

Figure 4

We recommend:

Do not operate your appliance for a long time; operating it with short intervals will have better results. The food will be chopped in more or less equal-size parts and will get mixed better. If unchopped food remains after blending, you may mix it with a spatula and operate the appliance again.

When you finish blending, please unplug the appliance, remove the main body from the blending shaft, separate the lid off the glass container, hold the blade's plastic part to remove it and finally take the material from the glass container.

Note: Recommended values for chopping and blending are obtained in our laboratory testing. You may also determine blending methods and times for your own taste.

Caution!

Never operate your appliance on a wet surface or when it is empty. Do not operate your appliance for a long time, operate it with short intervals.

Chopping and Blending With Metal Blending Shaft:

Caution!

Please take the following into consideration before using, while using and after using the blending shaft; Operate the metal shaft in a container and only when there is

FOOD TYPE	CAPACITY	SOPERATING TIME
Garlic / Onion (chopped into 8 pieces)	150-250 gr.	5-10 times pulse
Soup	200-300 gr.	10-30 times pulse
Parsley	40-50 gr.	10-15 times pulse
Meat (lean)	100-150 gr.	10-20 times pulse
Cheese	100-150 gr.	5-10 times pulse
Hazelnut / Almond (without shells)	100-200 gr.	5-10 times pulse
Fruits (chopped into 8 pieces)	250-300 gr.	5-15 times pulse
Infant formula	250-300 gr.	5-15 times pulse
Butter and honey mixture	300 gr. butter and 400 gr. honey	5 sec turbo

food in the container. It is dangerous to operate it outside of container or with an empty container. Please follow the order below for use. Before plugging in the appliance, fix the metal blending shaft to the motor casing by turning it towards the direction of arrow.



Figure 5



Figure 6

Stop turning when the metal blending shaft's upper edge is fixed to the motor casing; if you tighten more, this may cause abrasion in screw threads. To get better results with metal blending shaft, please use the supplied beaker or a deep bowl (Figure 6). Cut the food into pieces before placing them in the beaker. Dip the metal blending shaft into the beaker, plug and operate the appliance. Do not operate your appliance for a long time, operate it with short intervals. When operating, you may move the metal shaft upwards and downwards to ensure better blending. When you finish blending, unplug the appliance and remove the metal shaft from the main body.

Whisking and Blending With Whisker:

- You can easily prepare cake, omelets, pancake and mayonnaise with the help of whisker operating cap and the whisker.
- Please take the following into consideration before using, while using and after using the whisker;
- Always operate the appliance in upright position.
- Do not operate the appliance in an empty bowl or outside the bowl.
- To ensure an efficient whisking, move the whisker up and down and in circular motions.
- Make sure that the whisker is completely fixed in place.
- Do not press the appliance hard on the food.

Please follow the order below for use;

First insert the whisker into the whisker operating cap by pushing it and make sure that it is securely fastened.

Screw the whisker operating cap on the main body; do not tighten too much to avoid abrasion in screw threads.

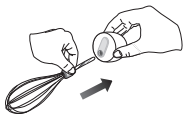


Figure 7

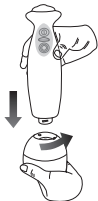


Figure 8

Dip the whisker into the supplied beaker or a deep bowl containing the food, plug the appliance and complete the whisking (Figure 9).



Figure 9

When you are done, stop and unplug the appliance. Take the main body out of the beaker. Unscrew the whisker by turning towards opposite direction to remove it from the operating cap. Pull out the whisker. You can install your appliance to a practical position by means of using wall hanger, screws and bolts supplied with the hand blender (Figure 10).



Figure 10

4 Cleaning and Care

- Always unplug the appliance before cleaning.
- For easy cleaning, it is recommended to wash and dry the accessories immediately after use.
- Particularly, wash and dry the chopping blade immediately after the use.
- Do not immerse motor casing, glass container lid and whisker operating cap into water and do not wash them under running water or dishwasher. Wipe them with a lukewarm damp cloth (recommended washing up liquids might be used) and dry (Figure 11).
- You can wash the glass container, blade and whisker on the upper shelf of dishwasher.
- You may wash metal blending shaft in lukewarm detergent water or wipe it with a damp cloth. However, you have to avoid water getting into the inner part of blending shaft. In such a case, turn the shaft upside down and shake and dry it up; do not wash the shaft in dishwasher.
- Wash and replace glass container lid's seal (Figure 11). This seal must be fixed correctly to ensure sealing.

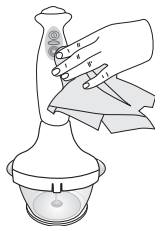


Figure 11

