



CX304

3 HP WOOD SHAPER

User Manual



TABLE OF CONTENTS

General Safety Instructions.....	3
Specific Safety Instructions.....	4
CX304 Features.....	5
Physical Features	6
Set Up.....	7
Un-Packing	7
Assembly	8
Spindle.....	8
Fence Assembly	9
Basic Controls.....	10
Test Run	11
Installing the Cutter	11
Table Inserts	12
Speed Change.....	12
Forward / OFF / Reverse Switch.....	13
Belt Replacement.....	13
Shaping with the Fence	14
Free Hand Shaping.....	15
Using Collars	15
Maintenance	16
Lubrication	16
Cleaning.....	16
V-Belt Inspection.....	16
Troubleshooting	17
Parts Breakdown & List.....	18-26
Warranty	27

GENERAL SAFETY INSTRUCTIONS FOR MACHINES

Extreme caution should be used when operating all power tools. Know your power tool, be familiar with its operation, read through the user manual and practice safe usage procedures at all times.

- ❖ **ALWAYS** read and understand the user manual before operating the machine.
- ❖ **CONNECT** your machine ONLY to the matched and specific power source.
- ❖ **ALWAYS** wear safety glasses respirators, hearing protection and safety shoes, when operating your machine.
- ❖ **DO NOT** wear loose clothing or jewelry when operating your machine.
- ❖ **A SAFE ENVIRONMENT** is important. Keep the area free of dust, dirt and other debris in the immediate vicinity of your machine.
- ❖ **BE ALERT! DO NOT** use prescription or other drugs that may affect your ability or judgment to safely use your machine.
- ❖ **DISCONNECT** the power source when changing drill bits, hollow chisels, router bits, shaper heads, blades, knives or making other adjustments or repairs.
- ❖ **NEVER** leave a tool unattended while it is in operation.
- ❖ **NEVER** reach over the table when the tool is in operation.
- ❖ **ALWAYS** keep blades, knives and bits sharpened and properly aligned.
- ❖ **ALL OPERATIONS MUST BE** performed with the guards in place to ensure safety.
- ❖ **ALWAYS** use push sticks and feather boards to safely feed your work through the machine and clamp the work-piece (when necessary) to prevent the work-piece from any unexpected movement.
- ❖ **ALWAYS** make sure that any tools used for adjustments are removed before operating the machine.
- ❖ **ALWAYS** keep the bystanders safely away while the machine is in operation.
- ❖ **NEVER** attempt to remove jammed cutoff pieces until the saw blade has come to a full stop.

CX304 – 3 HP WOOD SHAPER

SPECIFIC SAFETY INSTRUCTIONS

- ❖ Read and follow all the instructions and safety precautions in the user manual before setup or use.
- ❖ For the protection of your eyes, always wear safety glasses, goggles or face shield while operating the shaper.
- ❖ Never place your fingers or hands in the line of cut. If you slip, your hands or fingers may come into contact with the cutter. Always use a push stick when feeding stock against the cutter.
- ❖ Make sure the keyed washer is mounted directly under the spindle nuts.
- ❖ All guards must be in place while operating the shaper to ensure safety.
- ❖ Always feed the stock smoothly against the rotation of the cutter.
- ❖ Do not force the machine. It will perform a better job at a rate for which it is designed.
- ❖ Allow the motor to reach the full speed before feeding stock against the cutter.
- ❖ Use the overhead guard when adjustable fence is not in place.
- ❖ Make sure before making any adjustments, the switch is in the “OFF” position and the cord is un-plugged.
- ❖ Never leave the shaper unattended while it is running.
- ❖ Always use the cutters designed to be used with CX304 and similar shapers.
- ❖ Do not expose the shaper to rain or use in damp locations.
- ❖ Clean and sharp tools give safer and better performance. Dull cutters can cause kick backs and excessive chatter. Always check the cutter and other parts for proper adjustment before cutting operation.
- ❖ Always make sure that your shaper is in a stable position. Cutting heavy, long stock may alter the stability of the shaper. In the event that this may occur, the shaper should be firmly bolted to the floor.
- ❖ Do not wear loose clothing, neckties, jewelry or gloves that can get caught in moving parts. Confine long hair and keep sleeves above the elbow.
- ❖ Always use a feather board and/or hold-downs to support your work-piece when necessary.
- ❖ Make sure you have read and understood all the safety instructions in the manual and you are familiar with your shaper, before operating it. If you fail to do so, serious injury could occur.

WARNING!

The safety instructions given above can not be complete because the environment in every shop is different. Always consider safety first as it applies to your individual working conditions.



CX304 – WOOD SHAPER

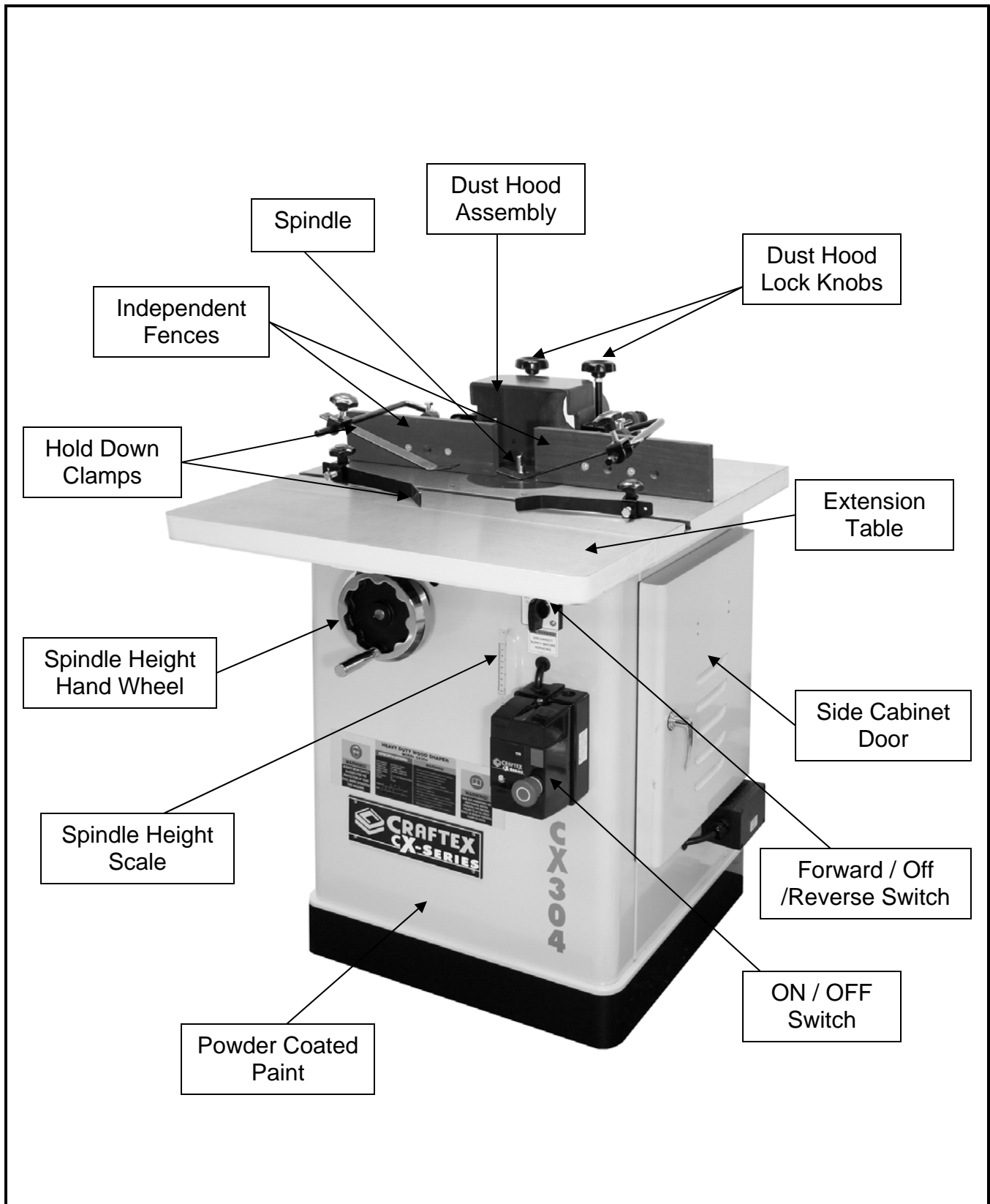
FEATURES

MODEL CX304 – 3HP WOOD SHAPER

As part of the growing line of Crafttex woodworking equipment, we are proud to offer the CX304 a 3 HP Wood Shaper. By following the instructions and procedures laid out in this user manual, you will receive years of excellent service and satisfaction. The CX304 is a professional tool and like all power tools, proper care and safety procedures should be adhered to.

- ❖ Motor 3-HP, 220-V, 60 Hz, Single Phase
- ❖ Spindle Travel..... 3"
- ❖ Spindle Size..... 1" and 3/4"
- ❖ Spindle Speeds 8,000 RPM and 10000 RPM
- ❖ Direction Forward / Reverse
- ❖ Table Size (with extension table).... 28" x 30"
- ❖ Spindle Table Openings 1-1/2", 3" & 4-1/4"
- ❖ Fence Size..... 12" x 2-1/4"
- ❖ Adjustable Hold Down Clamps Yes
- ❖ Starter Pins..... Yes
- ❖ T-Slot for Miter Gauge Yes
- ❖ Magnetic Reversing Switch Yes
- ❖ Dust Port..... 4"
- ❖ Floor to Table Height 34"
- ❖ Gross Weight..... 180 kg
- ❖ Warranty 3 Years

PHYSICAL FEATURES



SETUP

Before setting up your machine you should read and understand the instructions given in this manual.

The unpainted surfaces of this shaper are coated with a rust preventive waxy oil and you will want to remove this before you begin assembly. Use a solvent cleaner that will not damage painted surfaces.

WARNING!

CX304 is a very heavy machine, do not over-exert yourself. For safe moving use fork truck or get the help of an assistant or friend.

UNPACKING

The machine is properly packaged and shipped completely in crates for safe transportation. When unpacking, carefully inspect the crates and ensure that nothing has been damaged during transit. Open the crates and check that the machine and the parts are in good condition.

NOTE: While doing inventory, if you can not find any part, check if the part has already been installed on the machine. Some parts come pre-assembled for shipping purposes.

When setting up your machine, you will want to find an ideal spot where your shaper will most likely be positioned most of the time. Consider your complete work environment as well as working comfortability with the shaper, before placing your machine in the ideal spot.

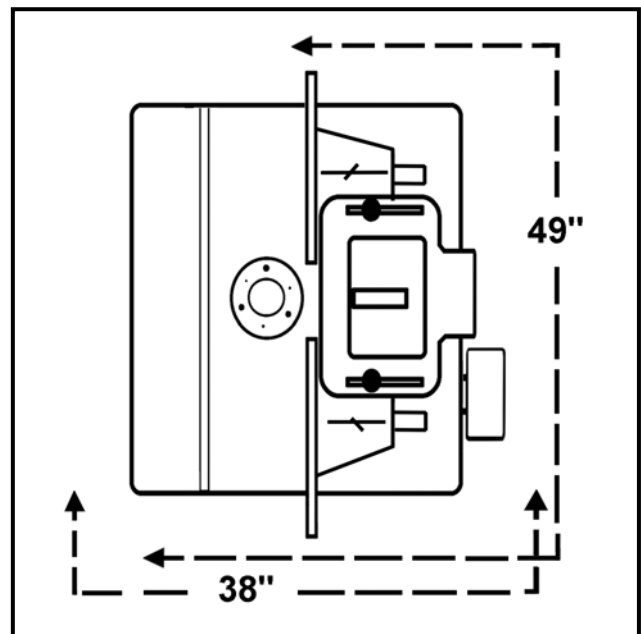


Figure-1 Minimum work space for CX304

ASSEMBLY

Read the manual and follow the instructions given in this manual to assemble your CX304.

Slide the spindle height hand wheel onto the hand wheel shaft and secure it using the set screw provided. See figure-2.



Figure-2 Securing the spindle height hand wheel

Thread the handle onto the hand wheel and tighten using a proper size wrench. See figure-3.



Figure-3 Installing the handle

Attach the cast-iron extension table to the shaper. Remove the three bolts installed on the edge of the table. Turn the extension table upside down; install the center bolt and finger tighten only. Rotate the table and

install the remaining two bolts. Adjust the table so that it is flush to the top and then tighten the bolts. See figure-4.

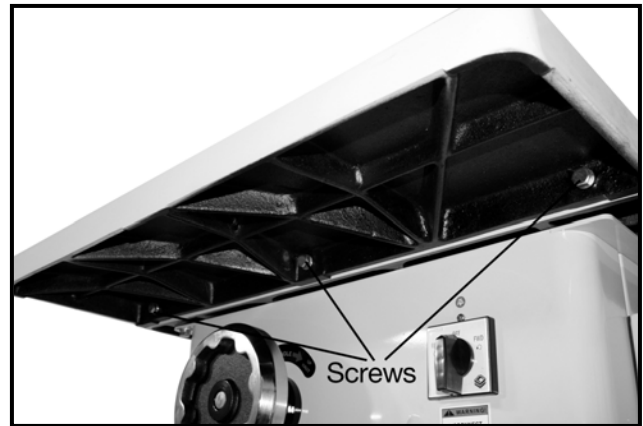


Figure-4 Installing the extension table

SPINDLE

The CX304 comes with two spindles 1" and 3/4".

WARNING!

Make sure the switch is in the "OFF" position and the cord is un-plugged from the power source.

To install the spindle:

Loosen the spindle lock knob on the side of the machine. See figure-5.



Figure-5 Loosening the spindle lock knob

Raise the arbor all the way up using the spindle height hand wheel.

Slide the spindle into the arbor opening and make sure the keyway on the arbor is aligned with the groove on the spindle. See figure-6.

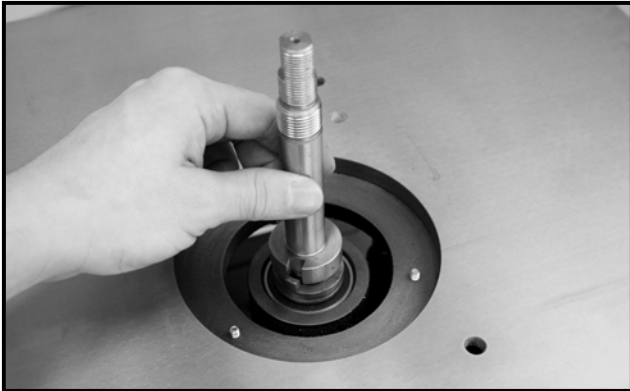


Figure-6 Sliding the spindle into the arbor

Open the cabinet door and slide the spindle lock down rod into the shaft on the spindle pulley from the bottom and tighten with your hand.

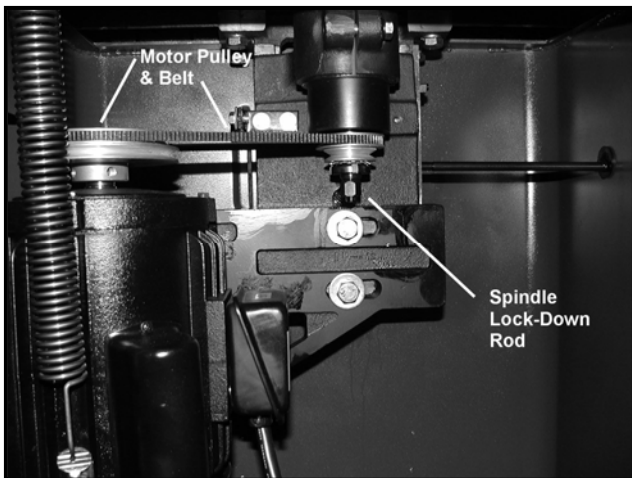


Figure-7 Installing the spindle

Use a wrench to hold the top part of the spindle while tightening the spindle lock down bar nut on the draw bar from the bottom as shown in figure-8.



Figure-8 Installing the spindle

FENCE ASSEMBLY

The CX304 comes with two 12" x 2-1/4" independent wooden fences which attach to the bracket.

To install the fence:

Attach the fence mounting bracket to the dust hood as shown in figure-9 and secure using screws and washers provided.

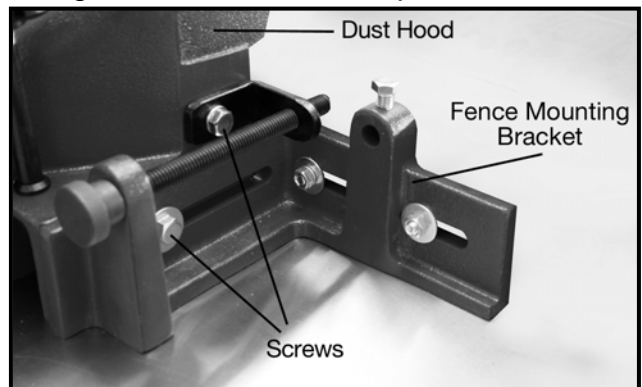


Figure-9 Securing the fence mounting bracket to the dust hood

Secure the second bracket to the other side of the dust hood in the same manner.

Attach the fence onto the fence mounting bracket, and secure it using the screws and washers provided. See figure-10.

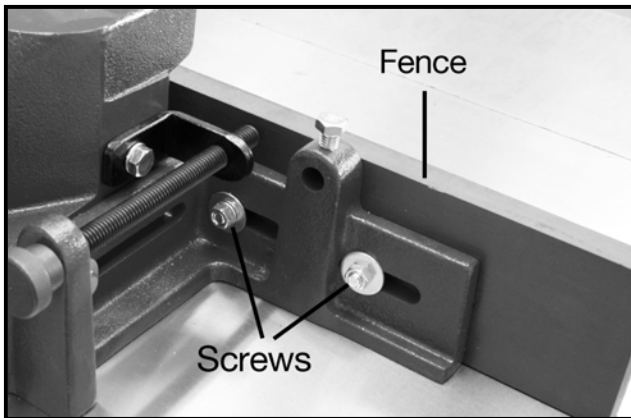


Figure-10 Securing the fence to the mounting bracket

Once you have installed both fences, lift the dust hood assembly with the fences, and place it on the table.

Align the holes on the dust hood with the two holes on the table surface. Thread the two lock knobs into the holes on the table through the dust hood as shown in figure-11. Tighten the lock knobs to secure the dust hood to the table.

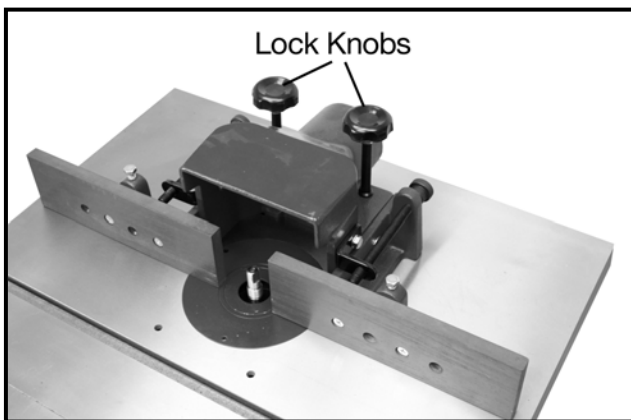


Figure-11 Installing dust hood assembly

WARNING!

The guards should be as close to the cutter as possible without interfering with the travel of the work-piece or cutter.

BASIC CONTROLS

The basic controls of this machine are shown in the figure-12. Use the figure and read the text to understand what the basic controls of your CX304 are:

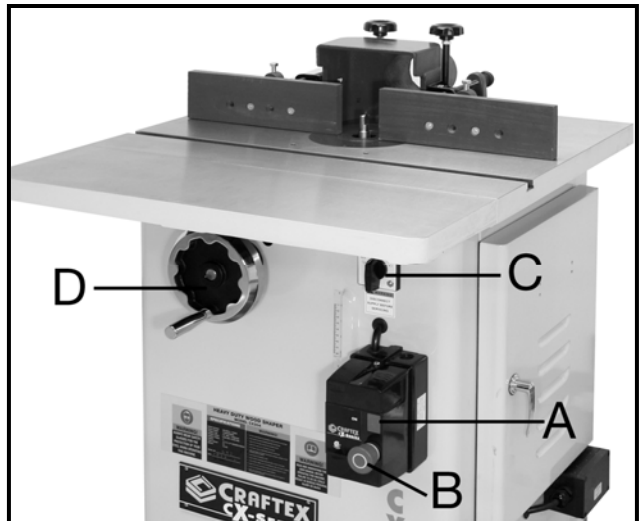


Figure-12 CX304 basic controls

A. ON Button

This button turns the machine "ON".

B. Emergency Stop Button

This button turns the machine "OFF".

C. Forward / OFF / Reverse Switch

It is used to control the direction of rotation of the cutter head.

D. Spindle Height Hand Wheel

The spindle height hand wheel is used to raise and lower the spindle.

E. Spindle Lock Knob (not shown in the picture)

It is used to secure the spindle in position so that it does not move during operation.

TEST RUN

Once you have assembled your machine completely, it is then time for a test run to make sure that the machine works properly and is ready for operation.

WARNING!

Always unlock the spindle before turning on the shaper.

Remove all the tools and objects used during assembly of the machine before the test run. Make sure the spindle, draw bar and cutters should be tight.

Plug the cord into the power outlet and press the green button to turn the machine ON. Test the ON & OFF buttons and Forward/Reverse switch and make sure they are working properly.

During the test run if there is any unusual noise coming from the machine or the machine vibrates excessively, shut off the machine immediately and disconnect the cord from the power source. Check all the parts you have assembled, once again and investigate to find out the problem. See page-17 for Troubleshooting



READ THE MANUAL

Before starting the shaper, make sure that you have read and understood the manual and you are familiar with the functions and safety features on this machine. Failure to do so may cause serious personal injury.

INSTALLING THE CUTTER

The CX304 operates at speeds of 8,000 and 10,000 RPM. Make sure to use the proper sized cutters with proper sized spindles on your CX304 to ensure safe operation.

To install the cutter:

Turn the machine “OFF” and make sure the cord is un-plugged from the power source.

Loosen the two lock knobs securing the dust hood on the table and move the dust hood and the fence away from the spindle.

Place the appropriate spacer or collar on the spindle for proper height of cutter (if needed).

Place the cutter on the spindle and make sure the orientation of the cutter is correct for the spindle rotation. Please the spacers or collars (as needed).

Thread the right-thread nut onto the spindle and then tighten it using a wrench. Now thread the left-thread nut on the spindle holding the right-thread nut with a wrench and tightening the left-thread nut with another wrench to make sure both the nuts lock each other and the cutter does not come off while operation. See figure-13.

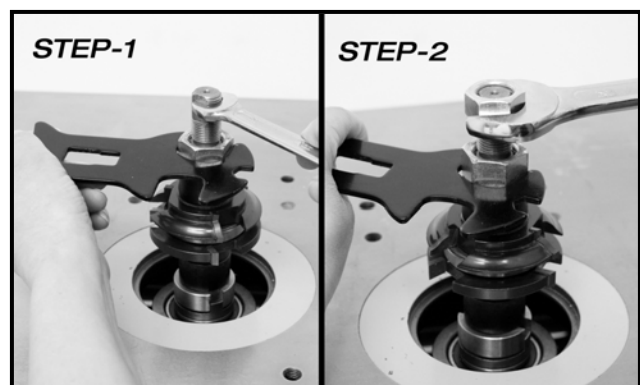


Figure-13 Installing the shaper cutter

TABLE INSERTS

CX304 comes with three different size table inserts to be used with different size cutters.

Clean any dust or dirt on the spindle opening edges before installing the table insert.

Place the table insert, on the spindle opening, and make sure the insert is flush with the table surface.

Adjust the 3 cap screws on each table inserts (if needed) to adjust the height and make it flush with the table surface. See figure-14.

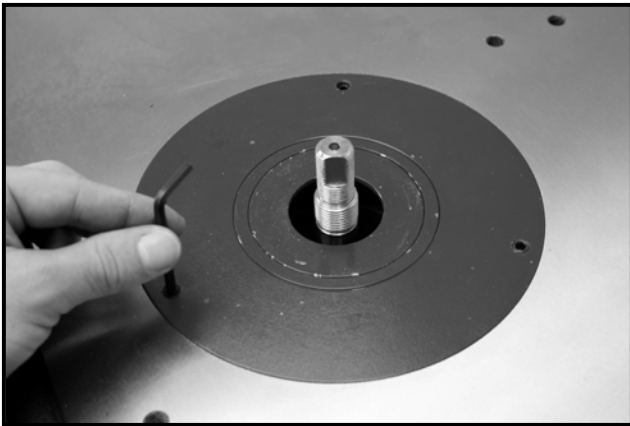


Figure-14 Adjusting the table inserts height

SPEED CHANGE

The CX304 is a two-speed shaper and operates at 8,000 and 10,000 RPM.

To change the speed:

Turn the switch “OFF” and make sure the cord is un-plugged from the power source.

Open the cabinet door and turn the spindle height hand wheel to lower the spindle and motor assembly.

Loosen the belt tension by loosening the belt tension lock knob. See figure-15.



Figure-15 Loosening the belt tension

Push the motor towards the belt spindle pulley and remove the belt from the pulley groove.

Line up the belt on the pulleys' grooves, according to the figure-16 to change the spindle speed.

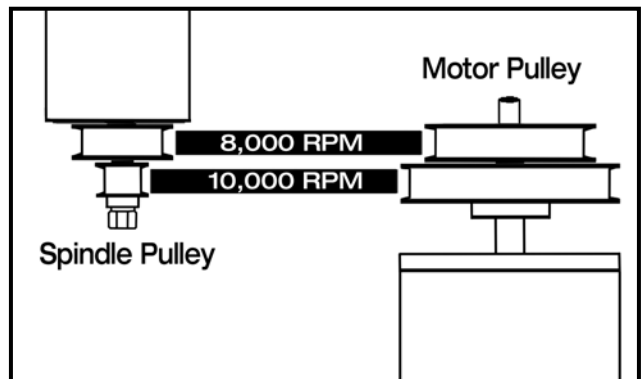


Figure-16 Belt positions on the pulleys

Once the belt is aligned on the pulleys' grooves, pull the motor away from the spindle to tension the belt and tighten the belt tension lock knob.

FORWARD / OFF / REVERSE SWITCH

The CX304 is equipped with a forward / reverse switch which controls the direction of rotation of the cutter.



Figure-17 Forward / OFF / Reverse switch

Most of the jobs are done with the forward rotation of the cutter but sometimes if it is necessary, you will want to flip the cutter on the spindle and reverse the cutter rotation to perform some specific jobs

The selector knob on the switch can be turned and set on any of the three positions; Forward, Off and Reverse.

When the switch is in the “Forward” position, the spindle will rotate in counter-clockwise direction and when in the “Reverse” position, the spindle will rotate in clockwise direction. When the switch is set on “Off”, the spindle will stop moving.

WARNING!

Before operating the shaper, check the direction of the rotation of the cutter. Cutters rotating backwards can cause unsafe conditions.

BELT REPLACEMENT

The belt stretches over time and should be checked regularly and replaced if needed.

To change the drive-belt on your CX304:

Turn the switch “OFF” and make sure the cord is un-plugged from the power source.

Open the cabinet door and loosen the belt tension using the belt tension lock knob shown in figure-18.



Figure-18 Belt tension lock knob

Take the belt off the pulleys and replace with a new one.

Lock the motor back to its place using the belt tension lock knob.

SHAPING WITH THE FENCE

Using the fence is the safest method of shaping. Most operations that use the fence for support can be performed by following the guidelines below:

If performing a cut where a portion of the edge of the work-piece is not touched by the cutter-head, both sides of the fence are positioned at the same depth. See figure-19.

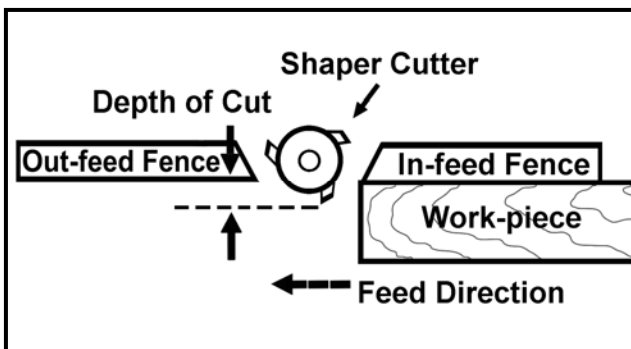


Figure-19 Fences at the same depth

When performing a cut where the entire edge of the work-piece is removed, the fence must be positioned differently. If the fence halves are kept in line, once the work-piece passes through the cutter-head, the shaped edge would no longer be supported against the fence. See figure-20.

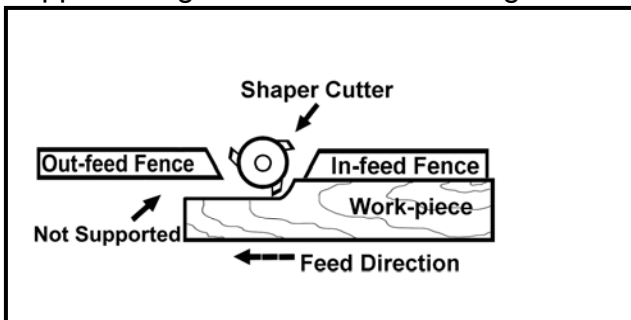


Figure-20 Work-piece not supported with the out-feed fence

To prevent this, the out-feed fence must be repositioned to compensate for the material

being removed. Advance the out-feed side of the fence equal to the amount of material being removed. See figure-21.

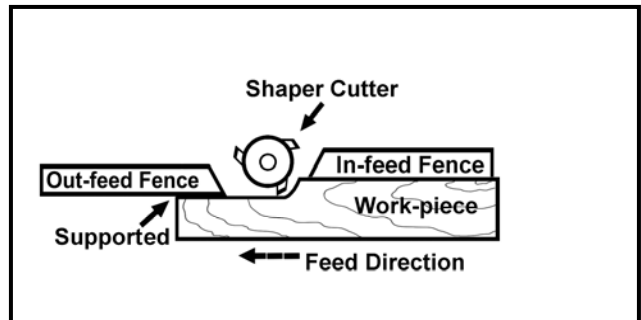


Figure-21 Out-feed fence positioned forward equal to the depth of cut

If using a miter gauge, the in-feed side of the fence must be parallel with the miter slot. Also make sure that the other fence piece is positioned out of the way so that it does not contact the work-piece after it passes through the cutter-head.

FREE HAND SHAPING

To set up the shaper for free hand shaping:

Turn the switch “OFF” and make sure the cord is un-plugged from the power source.

Remove the fence assembly and insert the starting pin in the most suitable hole on the insert. See figure-22.

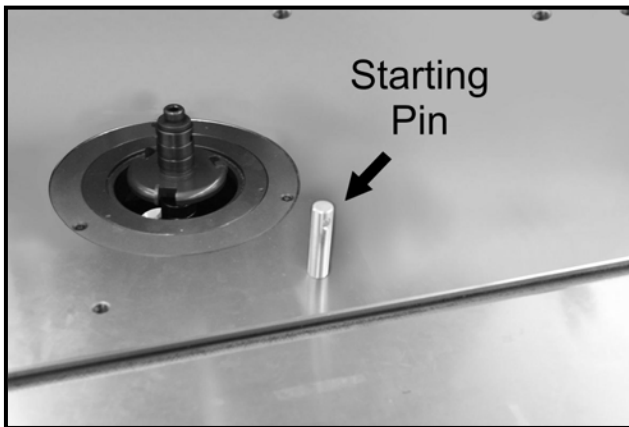


Figure-22 Starting pin

Use a hold down jig or push blocks for the safety of your hands and place the work-piece against the starting pin.

Plug the cord into the receptacle and turn the machine “ON”. Slowly pivot and feed the work-piece into the cutter and try to avoid starting your cut on the corner of the work-piece to avoid kick back.

WARNING!

When performing free hand shaping, the fence is removed which exposes the cutter and increase the risk of injury.

USING COLLARS

When shaping work-pieces that have irregular shapes, it is necessary to use rub-collars. Collars can be used below or above the cutter or between two cutters. Each setup type has its own advantages and disadvantages.

Below the Cutter

When using rub-collars below the cutter, the user will have a good view of the cut. But if the work-piece is lifted even slightly, it will cause the cutter to gouge the wood and ruin the work-piece.

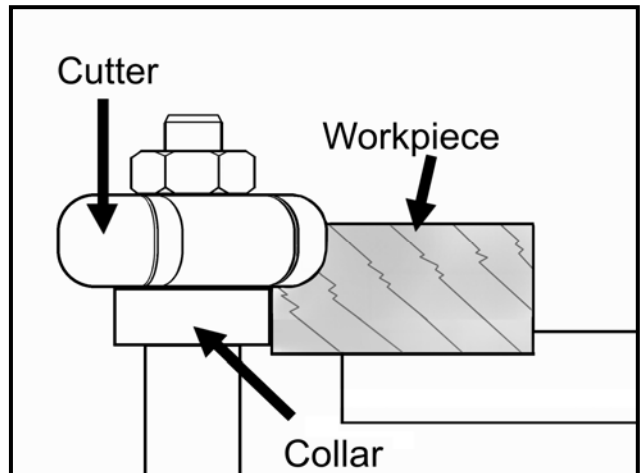


Figure-23 Using collars below the cutter

Above the Cutter

When using collars above the cutter as shown in figure-24, the cut will not be affected by slight variations in the thickness of the work-piece and the work-piece will not be gouged if lifted up accidentally.

The only disadvantage of using a collar above the cutter is that the operator will not be able to see the cut being made.

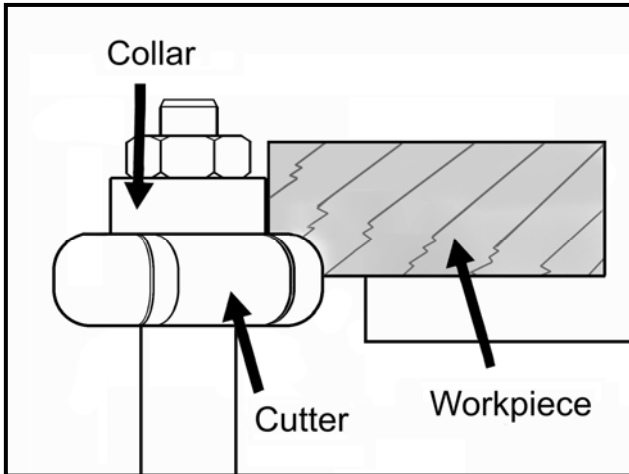


Figure-24 Using collar above the cutter

Between the Cutters

A collar is used between two cutters when both edges of the work-piece are to be shaped.

Like using the collar below the cutter, this method has also the disadvantage that if the work-piece is accidentally lifted up, the cutter will gouge and ruin the work-piece.

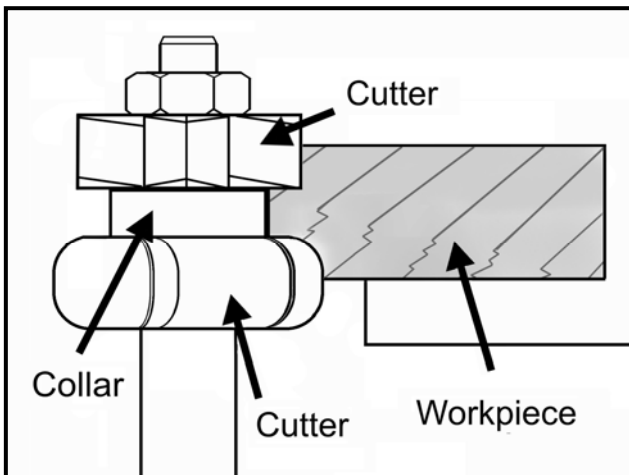


Figure-25 Using collar between the cutters

MAINTENANCE

During the life of your machine, you will need to practice some regular maintenance to keep your shaper in peak performance condition.

WARNING!

Make sure the machine is turned off and the cord is disconnected from the power source before servicing and removing/replacing any components on the machine.

LUBRICATION

The shaper has sealed lubricated bearings in the motor housing and arbour assembly and do not require any lubrication.

CLEANING

The moisture from the wood dust remaining on the table surface can cause rust. The table and other un-painted surfaces of the machine should be cleaned and wiped after every use to make sure that there is no moisture against bare metal surfaces. Then seal with an aerosol or paste wax.

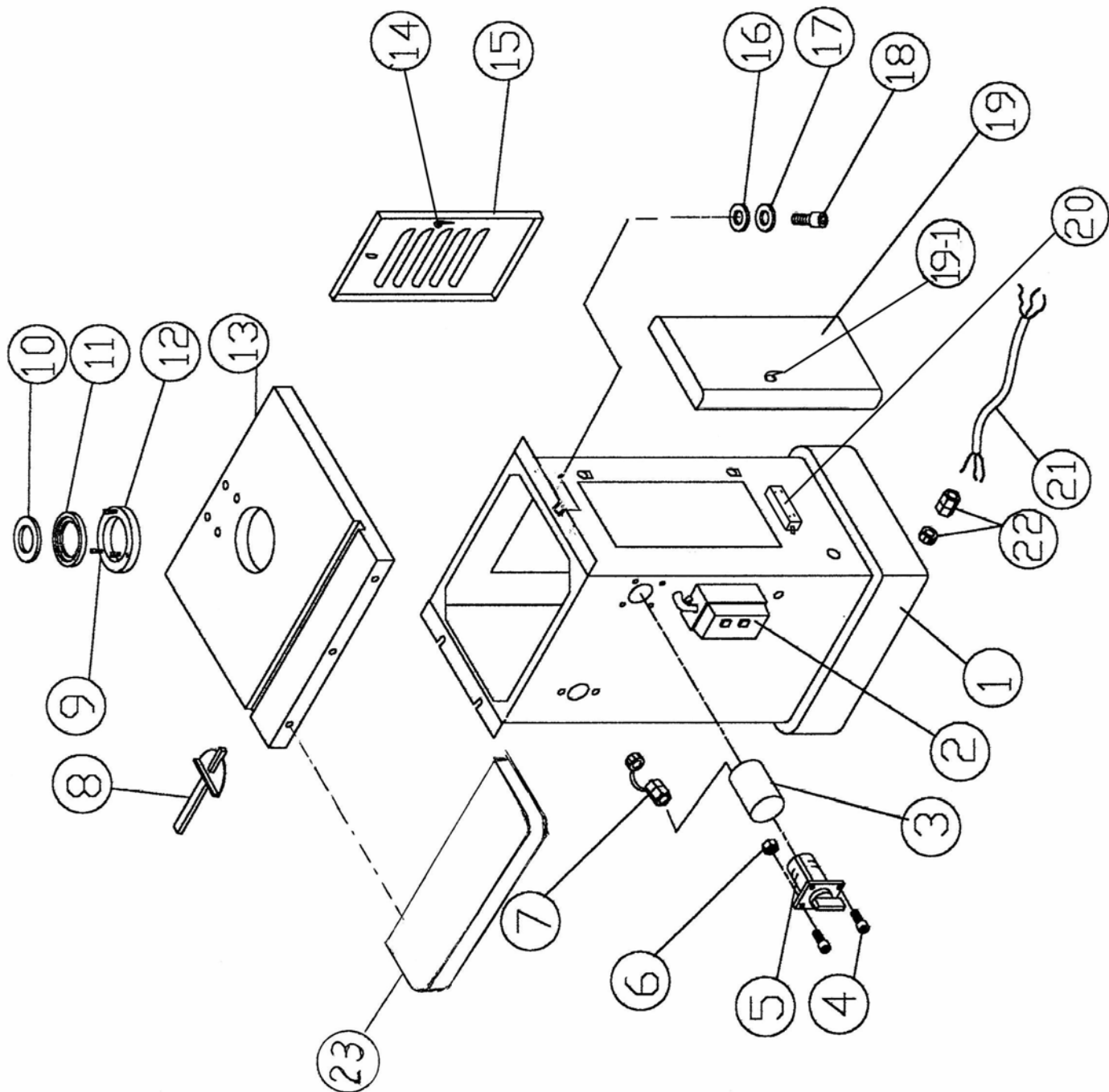
V-BELT INSPECTION

The V-belt stretches with use and should be checked regularly. Check the V-belt for proper tension and belt condition every month.

TROUBLESHOOTING

PROBLEM	POSSIBLE CAUSE	SOLUTION
The shaper does not start	1. The supply circuit has low/no voltage or high resistance.	1. Check breaker / If you are unqualified to test voltage, determine circuit loads, or rewire, contact a qualified electrician.
	2. The motor start capacitor is open or shorted.	2. Unplug the shaper and inspect the capacitor for oily residue, bubbled plastic, foul odor & test and replace accordingly.
	3. Forward/Reverse switch is in the "OFF" position.	3. Make sure the switch is in the "Forward" or "Reverse" position.
The shaper runs slow.	1. The belt-to-pulley ratio is set low speed.	1. Unplug the shaper and move the belt to the high speed pulley position.
	2. The extension cord used is the wrong gauge and has too much resistance, or supply circuit has low voltage, or high resistance.	2. Eliminate the extension cord and move the shaper closer to the wall receptacle. If you are unqualified to test or determine circuit loads, contact a qualified electrician.
The drive belt tears or runs off the shaper.	1. The belt tension is too low and the belt has run off the pulley.	1. Increase the belt tension to prevent slippage. DO NOT over tighten the belt tension.
The shaper vibrates, the spindle is loose or the cutter chatters.	1. The shaper is unstable and wobbles.	1. Stabilize the shaper with the floor, using shims.
	2. The spindle, cutter, or router bit spindle adapter is loose or out of alignment.	2. Reinstall spindle, cutter or router bit spindle adapter as outlined.
	3. The shaper has a loose motor or spindle cartridge.	3. Unplug the shaper & carefully look for loose motor, motor mounts, spindle cartridge or other parts. Tighten fasteners as required.
	4. The spindle gib screws are loose.	4. Tighten the spindle gib screws.

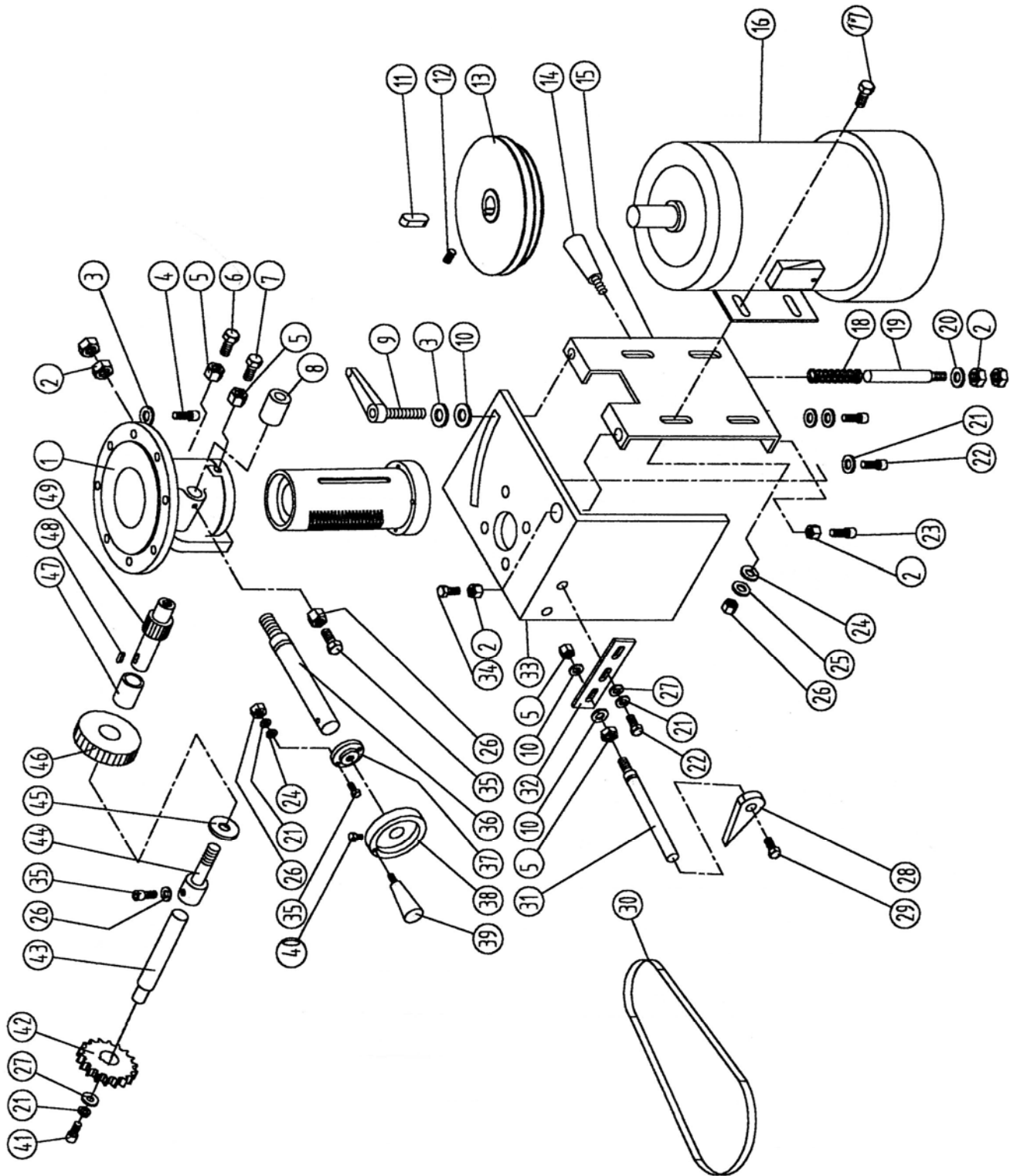
CX304 PARTS DIAGRAM - STAND ASSEMBLY



CX304 PARTS LIST - STAND ASSEMBLY

NO	DESCRIPTION	Q,TY
1	STAND	1
2	MAGNETIC SWITCH	1
3	SWITCH COVER	1
4	SCREW	4
5	FORWARD-REVERSE SWITCH	1
6	HEX NET	4
7	STRAIN RELIEF BUSHING	2
8	MITER GAUGE	1
9	SOCKET SET SCREW	3
10	TABLE INSERT	1
11	TABLE INSERT	1
12	TABLE INSERT	1
13	TABLE	1
14	CABINET DOOR LOCK	1
15	CABINET DOOR	1
16	WASHER	3
17	LOCK WASHER	3
18	SCREW 3/8" X 1" L	3
19	MOTOR DOOR	1
19-1	MOTOR DOOR HANDLE	1
20	SCREW 1/4" X 3/8" L	6
21	CORD	1
22	STRAIN RELIET	1
23	EXTENSION WING	1

CX304 PARTS DIAGRAM - MOTOR & SPINDLE

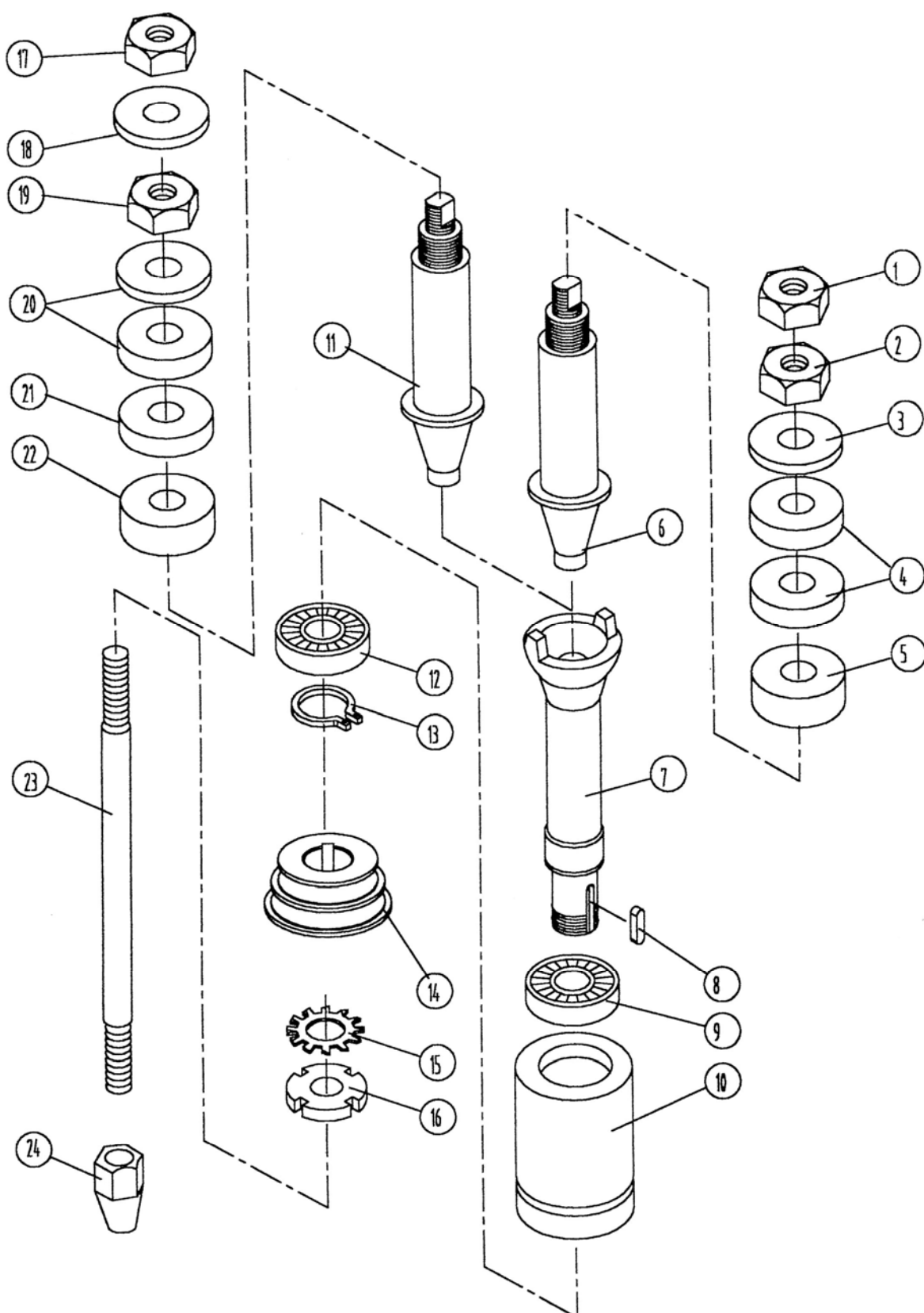


CX304 PARTS LIST - MOTOR & SPINDLE

NO	DESCRIPTION	Q,TY
1	SPINDLE HOUSING	1
2	HEX NUT 1/2"	6
3	LOCK WASHER 3/8" ϕ	5
4	HEX HEAD SCREW 3/8" X 16 X 1" L	8
5	HEX NUT 3/8"	7
6	HEX HEAD BOLT 3/8" X 1 1/4"	1
7	HEX HEAD BOLT 3/8" X 1 1/4"	1
8	COLLAR	1
9	LOCK HANDLE	1
10	FLAT WASHER 3/8"	3
11	KEY	1
12	SOCKET SET SCREW 5/16" X 3/8"	1
13	MOTOR PULLEY	1
14	KNOB	1
15	MOTOR PLATE	1
16	MOTOR	1
17	CARRIAGE BOLT 5/16" X 3/4"	4
18	SPRING	1
19	SHAFT	1
20	FLAT WASHER 1/2"	1
21	LOCK WASHER 1/4"	7
22	HEX HEAD SCREW 1/4" X 3/4"	6
23	HEX HEAD SCREW 1/2" X 1 1/2"	1
24	FLAT WASHER 5/16" ϕ	6
25	LOCK WASHER 5/16" ϕ	6
26	HEX NUT 5/16"	8
27	FLAT WASHER 1/4"	3
28	POINTER	1
29	FLAT HEAD SCREW M5 X 10m/m L	1
30	V-BELT K-23	1

NO	DESCRIPTION	Q,TY
31	SHAFT	1
32	PLATE	1
33	MOTOR PLATE BRACKET	1
34	HEX HEAD SCREW 1/2" X 1" L	1
35	HEX HEAD SCREW 5/16" X 1" L	4
36	SHAFT	1
37	FLANGE	1
38	HANDLE WHEEL	1
39	HANDLE	1
40	SOCKET SET SCREW 5/16" X 5/8" L	1
41	HEX CAP SCREW 1/4" X 3/4" L	1
42	HANDLE WHEEL LOCK	1
43	LOCK BAR	1
44	LOCK SCREW	1
45	WASHER GEAR	1
46	GEAR	1
47	COLLAR	1
48	KEY	1
49	GEAR SHAFT	1

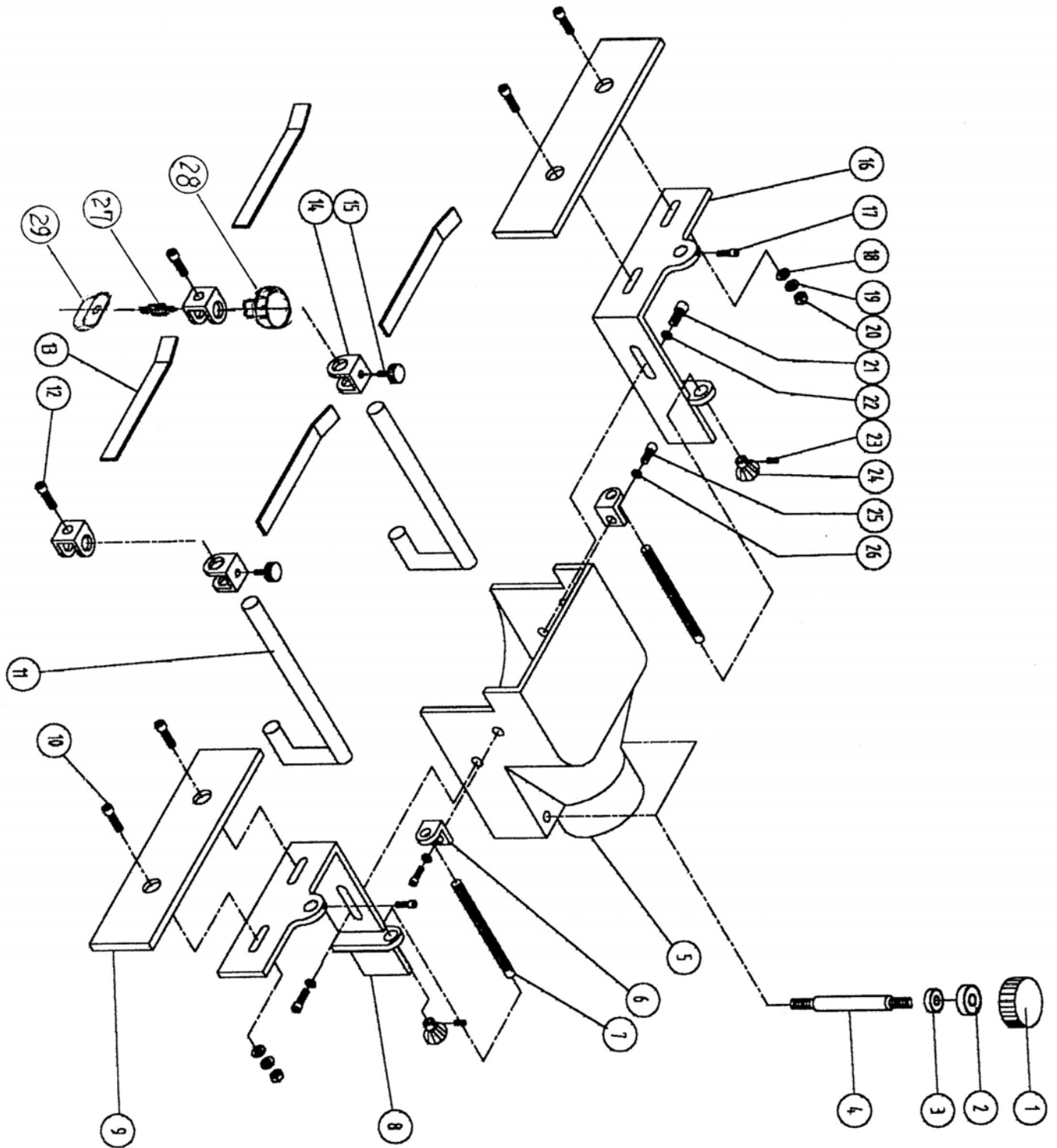
CX304 PARTS DIAGRAM - SPINDLE



CX304 PARTS LIST - SPINDLE

NO	DESCRIPTION	Q,TY
1	HEX NUT 3/4" (L.H)	1
2	HEX NUT 1" (R.H)	1
3	COLLAR 3/4" ϕ X 1/2" L	1
4	COLLAR 3/4" ϕ X 3/4" L	2
5	COLLAR 3/4" ϕ X 1" L	1
6	SPINDLE 3/4"	1
7	SHAFT	1
8	KEY	1
9	BEARING 6205LLB	1
10	QUILL	1
11	SPINDLE 1"	1
12	BEARING 6205Z	1
13	SNAP RING	1
14	SPINDLE PULLEY	1
15	GEAR WASHER	1
16	LOCK NUT 3/8" (L.H)	1
17	HEX NUT	1
18	COLLAR	1
19	HEX NUT 1/2" (R.H)	1
20	COLLAR 1/2" ϕ X 1/2" L	2
21	COLLAR 1/2" ϕ X 3/4" L	1
22	COLLAR 1/2" ϕ X 1" L	1
23	DRAW BAR	1
24	TAPER NUT 3/8"	1

CX304 PARTS DIAGRAM - FENCE & GUARD



CX304 PARTS LIST - FENCE & GUARD

NO	DESCRIPTION	Q,TY
1	KNOB	2
2	LOCK WASHER	2
3	HEX NUT 3/8"	2
4	LOCK SCREW	2
5	GUARD	1
6	BRACKET SCREW GUIDE	2
7	SCREW GUIDE	2
8	BRACKET FENCE (R.H)	1
9	FENCE	2
10	FIAT HEAD SCREW	4
11	GUIDE SUPPORT	2
12	SCREW 3/8" X 1" L	2
13	TENSION	4
14	RETAINER	4
15	KNOB	2
16	BRACKET FENCE (L.H)	1
17	SCREW 3/8" X 3/4" L	2
18	WASHER 5/16" ϕ	4
19	LOCK WASHER 5/16"	4
20	HEX NUT 5/16"	4
21	SCREW 3/8" X 1" L	2
22	WASHER 3/8" ϕ	2
23	SOCKET SET SCREW 1/4" X 3/8" L	2
24	KNOB	2
25	SCREW 3/8" X 3/4" L	2
26	LOCK WASHER 3/8" ϕ	2
27	SCREW	2
28	KNOB	2
29	T-NUT 3/8"	2



WARRANTY

CRAFTEX 3 YEARS LIMITED WARRANTY

Craftex warrants every product to be free from defects in materials and agrees to correct such defects where applicable. This warranty covers **three years** for parts and 90 days for labour (unless specified otherwise), to the original purchaser from the date of purchase but does not apply to malfunctions arising directly or indirectly from misuse, abuse, improper installation or assembly, negligence, accidents, repairs or alterations or lack of maintenance.

Proof of purchase is necessary.

All warranty claims are subject to inspection of such products or part thereof and Craftex reserves the right to inspect any returned item before a refund or replacement may be issued.

This warranty shall not apply to consumable products such as blades, bits, belts, cutters, chisels, punches etceteras.

Craftex shall in no event be liable for injuries, accidental or otherwise, death to persons or damage to property or for incidental contingent, special or consequential damages arising from the use of our products.

RETURNS, REPAIRS AND REPLACEMENTS

To return, repair, or replace a Craftex product, you must visit the appropriate Busy Bee Tools showroom or call 1-800-461-BUSY. Craftex is a brand of equipment that is exclusive to Busy Bee Tools.

For replacement parts directly from Busy Bee Tools, for this machine, please call 1-800-461-BUSY (2879), and have your credit card and part number handy.

- All returned merchandise will be subject to a minimum charge of 15% for re-stocking and handling with the following qualifications.
- Returns must be pre-authorized by us in writing.
- We do not accept *collect* shipments.
- Items returned for warranty purposes must be insured and shipped pre-paid to the nearest warehouse
- Returns must be accompanied with a copy of your original invoice as proof of purchase. Returns must be in an un-used condition and shipped in their original packaging a letter explaining your reason for the return. Incurred shipping and handling charges are not refundable.
- Busy Bee will repair or replace the item at our discretion and subject to our inspection.
- Repaired or replaced items will be returned to you pre-paid by our choice of carriers.
- Busy Bee reserves the right to refuse reimbursement or repairs or replacement if a third party without our prior authorization has carried out repairs to the item.
- Repairs made by Busy Bee are warranted for 30 days on parts and labour.
- Any unforeseen repair charges will be reported to you for acceptance prior to making the repairs.
- The Busy Bee Parts & Service Departments are fully equipped to do repairs on all products purchased from us with the exception of some products that require the return to their authorized repair depots. A Busy Bee representative will provide you with the necessary information to have this done.
- For faster service it is advisable to contact the nearest Busy Bee location for parts availability prior to bringing your product in for repairs.