

User Manual

Revision 2.100
English

Modbus TCP Slave / Modbus Master - Converter

(Order Code: HD67507-A1, HD67507-B2, HD67507-WiFi-A1)

for Website information:

www.adfweb.com?Product=HD67507

for Price information:

www.adfweb.com?Price=HD67507-A1

www.adfweb.com?Price=HD67507-B2

www.adfweb.com?Price=HD67507-WiFi-A1

Benefits and Main Features:

- ✚ Very easy to configure
- ✚ Low cost
- ✚ 32mm Rail DIN mount
- ✚ Wide supply input range
- ✚ Galvanic Isolation of RS485
- ✚ Temperature range: -40°C/+85°C (-40°F/+185°F)



HD67507-A1



HD67507-B2

For others products, see also the following links:

RS232 / RS485 / USB / Ethernet

www.adfweb.com?Product=HD67118 (RS232 / RS485 - Converter)

www.adfweb.com?Product=HD67119 (USB / RS485 - Converter)

www.adfweb.com?Product=HD67038 (RS485 / RS232 / Ethernet - Converter)

CAN / CANopen / Modbus / Modbus TCP

www.adfweb.com?Product=HD67001 (CANopen / Modbus Master - Converter)

www.adfweb.com?Product=HD67502 (CANopen / Modbus Slave - Converter)

www.adfweb.com?Product=HD67011 (CAN / Modbus Master - Converter)

www.adfweb.com?Product=HD67012 (CAN / Modbus Slave - Converter)

www.adfweb.com?Product=HD67514 (CAN / Modbus TCP Master - Converter)

www.adfweb.com?Product=HD67515 (CAN / Modbus TCP Slave - Converter)

Modbus RTU Slave / Modbus TCP Master - Converter

www.adfweb.com?Product=HD67510

Do you have your customer protocol? Then go to:

www.adfweb.com?Product=HD67003

Do you need to choose a device? Do you want help?

www.adfweb.com?Cmd=helpme



User Manual

INDEX:

	Page
INDEX	2
UPDATED DOCUMENTATION	2
REVISION LIST	2
WARNING	2
TRADEMARKS	2
SECURITY ALERT	3
EXAMPLES OF CONNECTION	4
CONNECTION SCHEME	6
CHARACTERISTICS	9
POWER SUPPLY	10
FUNCTION MODES	11
LEDS (for HD67507-A1 and HD67507-B2)	12
LEDS (for HD67507-WiFi-A1)	13
ETHERNET (for HD67507-A1 and HD67507-B2)	14
WI-FI (for HD67507-WiFi-A1)	14
RS232	15
RS485	16
USE OF COMPOSITOR SW67507	18
NEW PROJECT / OPEN PROJECT	19
SOFTWARE OPTIONS	20
SET COMMUNICATION	21
OPERATION MODE	24
TRANSLATE TABLE	25
UPDATE VIA SERIAL/USB	27
UPDATE VIA UDP (for HD67507-A1/B2)	28
UPDATE VIA UDP (for HD67507-WiFi-A1)	29
MECHANICAL DIMENSIONS	31
ORDERING INFORMATIONS	33
ACCESSORIES	33
DISCLAIMER	34
OTHER REGULATIONS AND STANDARDS	34
WARRANTIES AND TECHNICAL SUPPORT	35
RETURN POLICY	35

UPDATED DOCUMENTATION:

Dear customer, we thank you for your attention and we remind you that you need to check that the following document is:

- Updated
- Related to the product you own

To obtain the most recently updated document, note the "document code" that appears at the top right-hand corner of each page of this document.

With this "Document Code" go to web page www.adfweb.com/download/ and search for the corresponding code on the page. Click on the proper "Document Code" and download the updates.

REVISION LIST:

Revision	Date	Author	Chapter	Description
1.104	27/06/2011	DP	All	Revision
1.110	03/09/2012	FI	All	Software changed (v1.800)
2.000	14/01/2014	FI	All	New hardware version
2.100	14/07/2014	Ff	All	Added chapters

WARNING:

ADFweb.com reserves the right to change information in this manual about our product without warning.

ADFweb.com is not responsible for any error this manual may contain.

TRADEMARKS:

All trademarks mentioned in this document belong to their respective owners.

SECURITY ALERT:**GENERAL INFORMATION**

To ensure safe operation, the device must be operated according to the instructions in the manual. When using the device are required for each individual application, legal and safety regulation. The same applies also when using accessories.

INTENDED USE

Machines and systems must be designed so the faulty conditions do not lead to a dangerous situation for the operator (i.e. independent limit switches, mechanical interlocks, etc.).

QUALIFIED PERSONNEL

The device can be used only by qualified personnel, strictly in accordance with the specifications.

Qualified personnel are persons who are familiar with the installation, assembly, commissioning and operation of this equipment and who have appropriate qualifications for their job.

RESIDUAL RISKS

The device is state of the art and is safe. The instrument can represent a potential hazard if they are inappropriately installed and operated by personnel untrained. These instructions refer to residual risks with the following symbol:

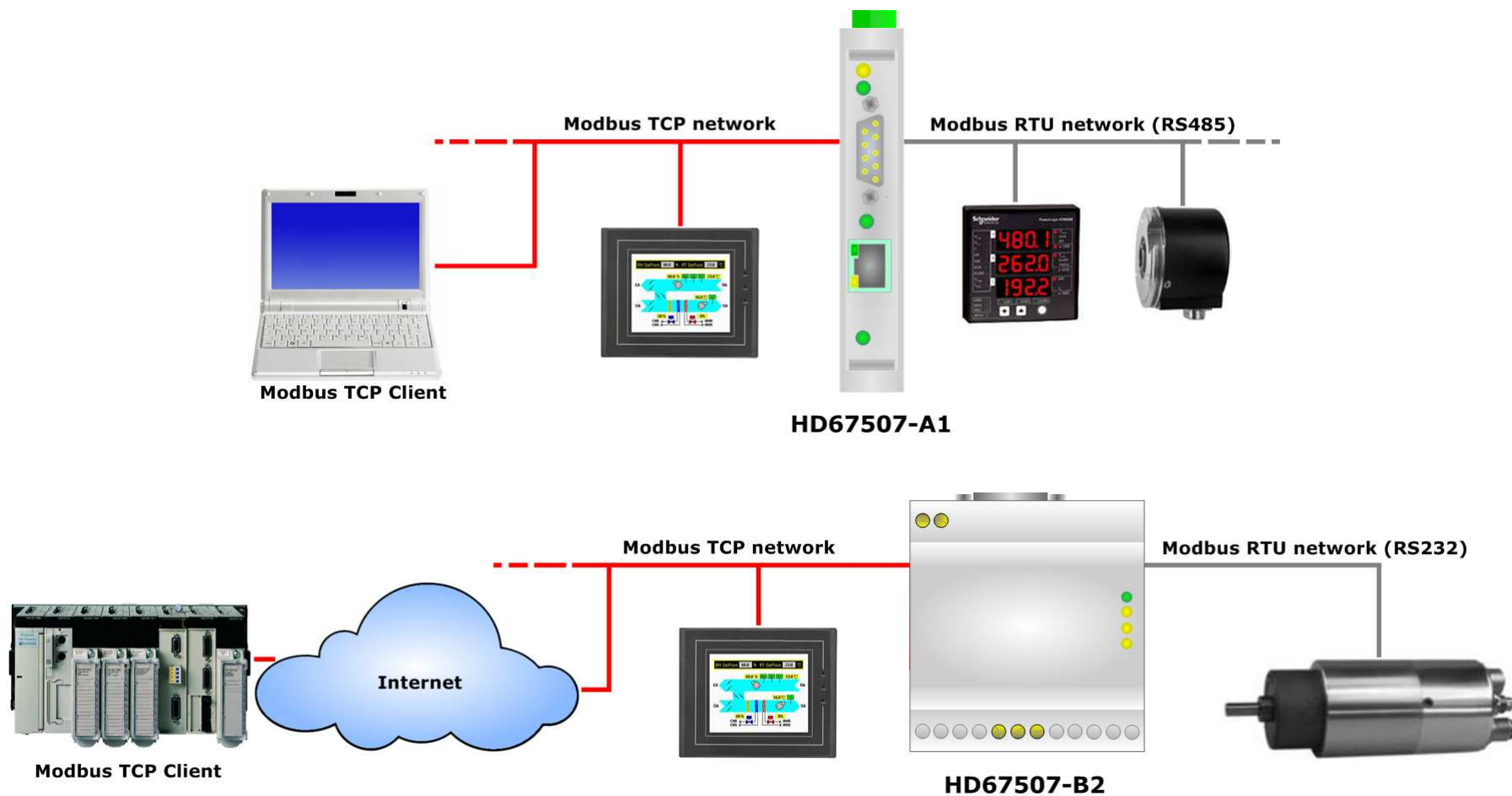


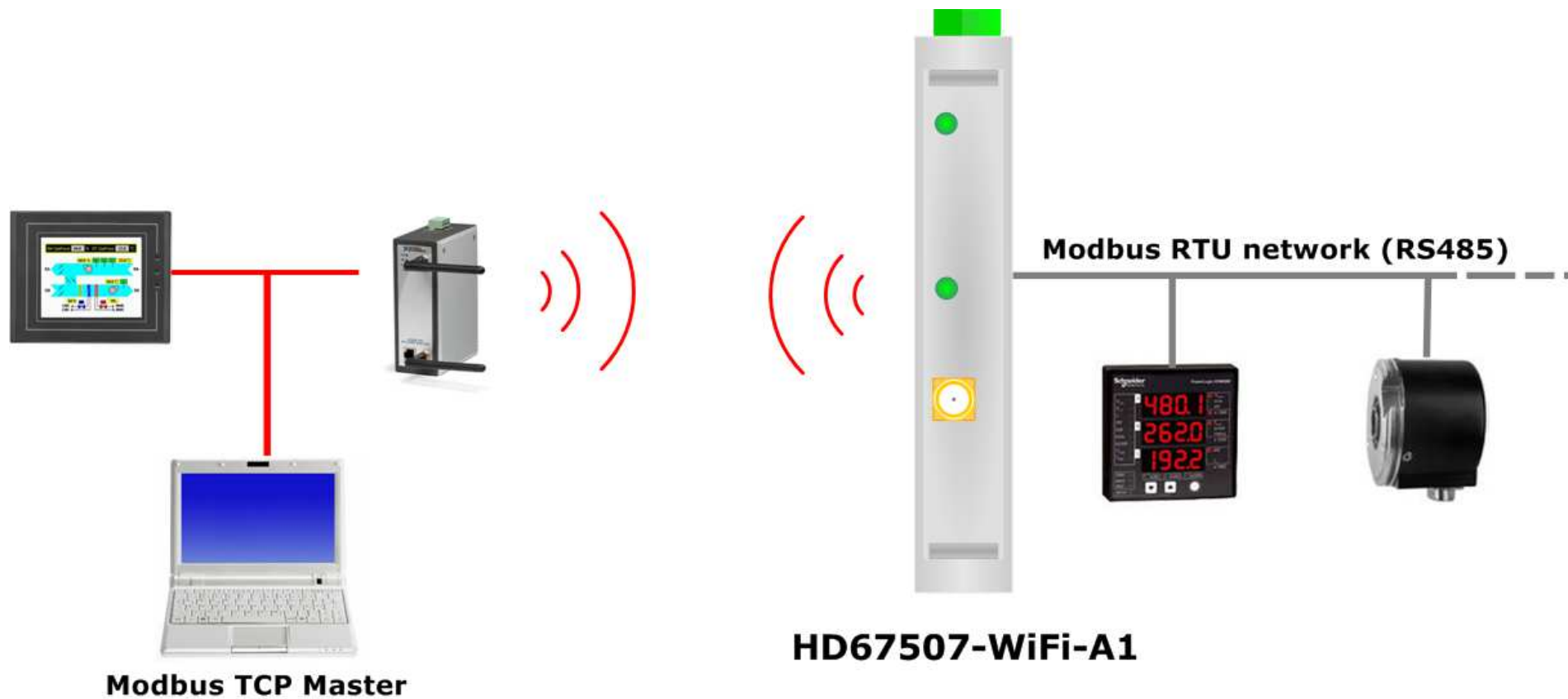
This symbol indicates that non-observance of the safety instructions is danger for people to serious injury or death and / or the possibility of damage.

CE CONFORMITY

The declaration is made by us. You can send an email to support@adfweb.com or give us a call if you need it.

EXAMPLES OF CONNECTION:





CONNECTION SCHEME:

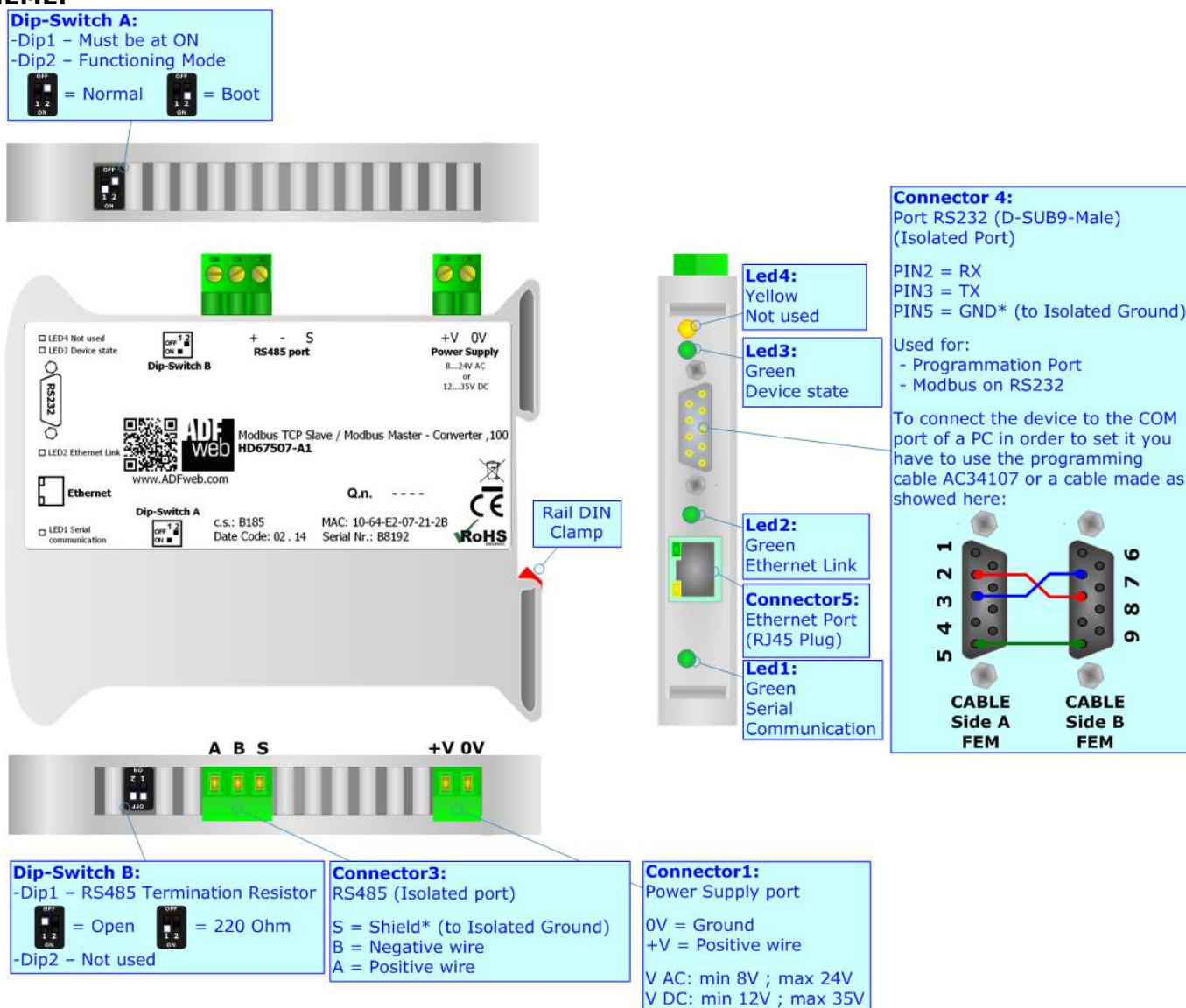


Figure 1a: Connection scheme for HD67507-A1

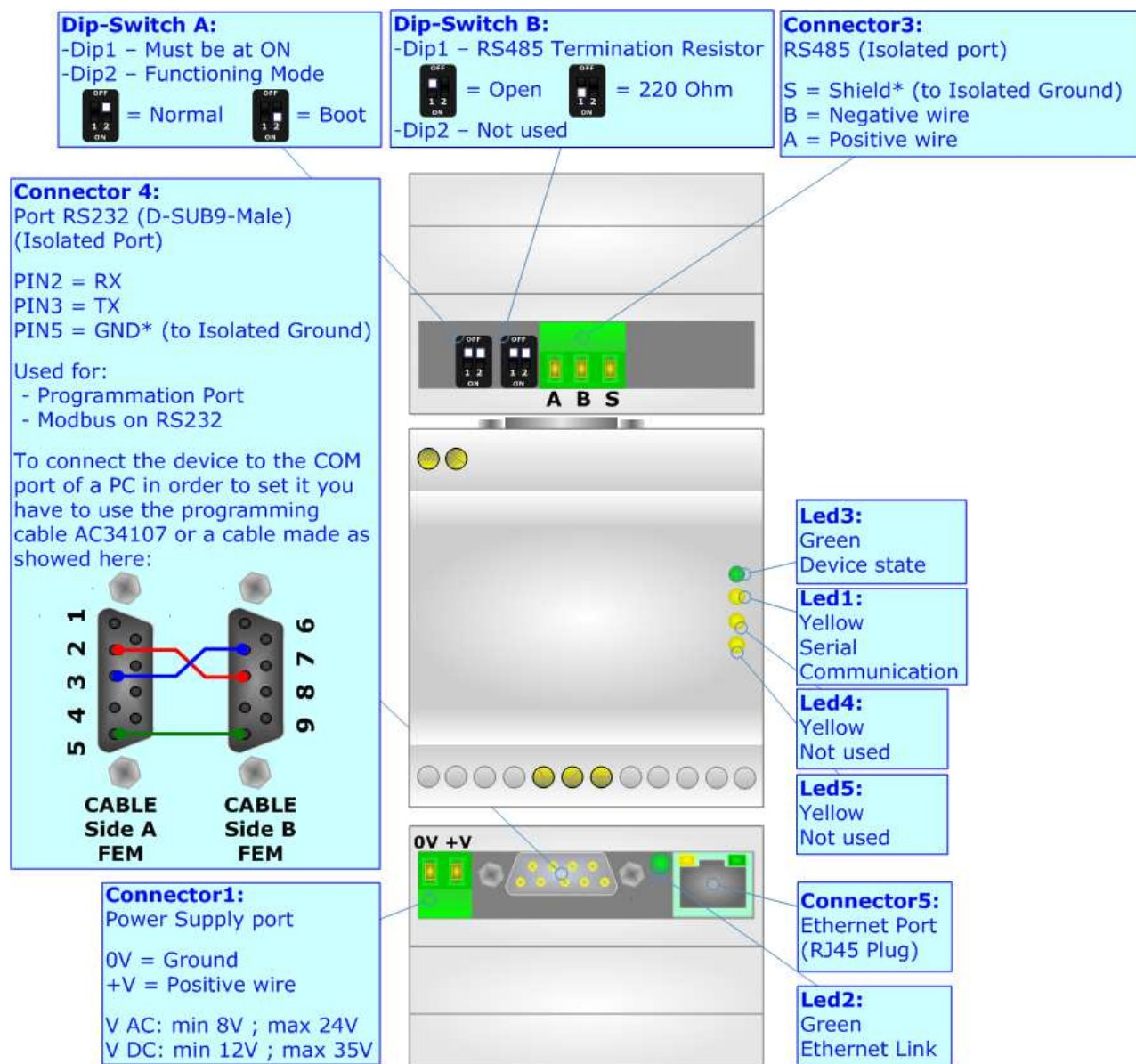


Figure 1b: Connection scheme for HD67507-B2

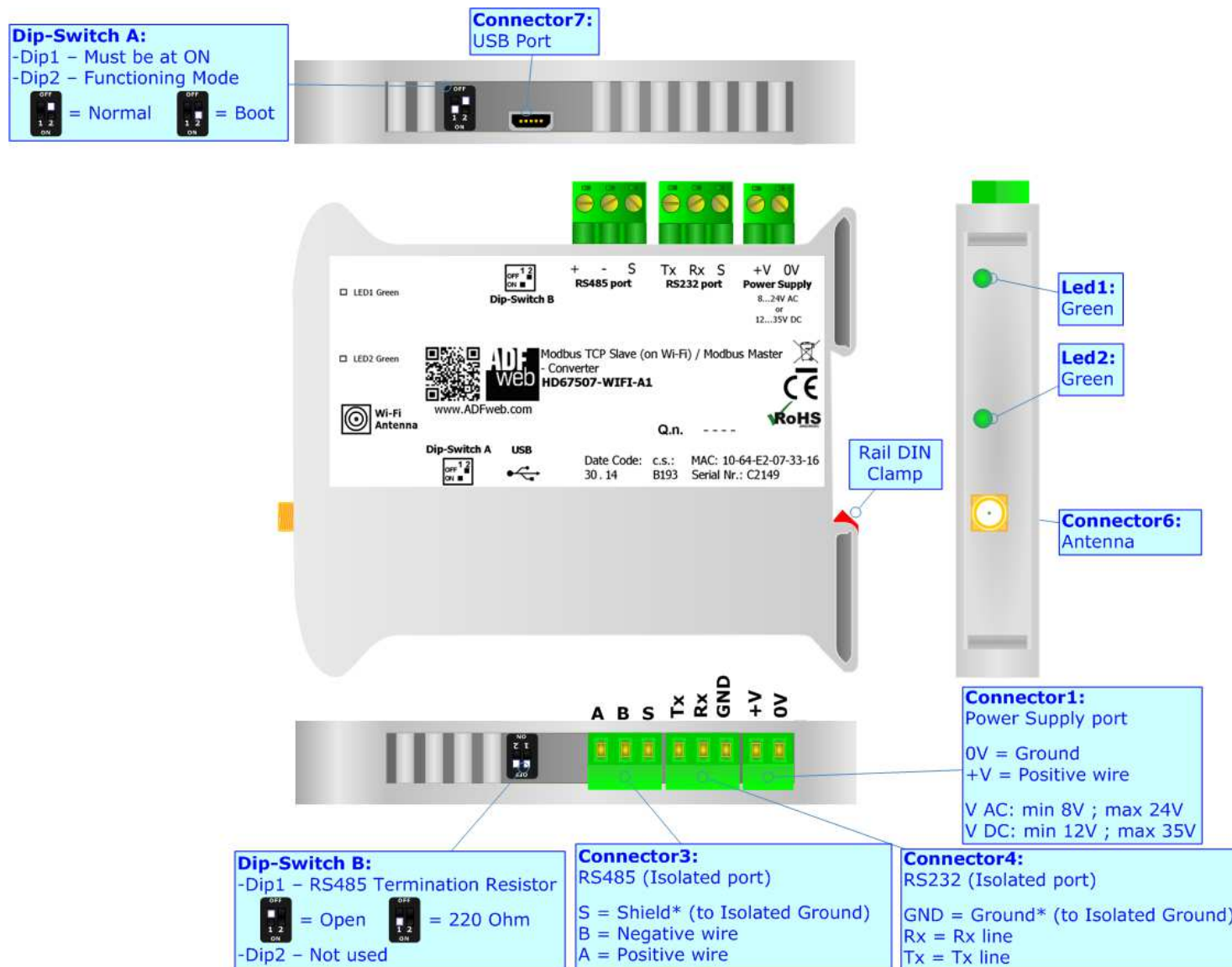


Figure 1c: Connection scheme for HD67507-WiFi-A1

CHARACTERISTICS:

The HD67507-A1/B2 and HD67507-WiFi-A1 are a Modbus TCP Slave / Modbus Master – Converter.

It allows for the following characteristics:

- Triple isolation between Serial - Power Supply, Serial - Ethernet, Power Supply - Ethernet.
- Ethernet 10Base-T / 100Base-T, autosensing for Modbus TCP ;
- Mountable on 35mm Rail DIN;
- Wide power supply input range: 8...24V AC or 12...35V DC;
- Wide temperature range: -40°C / 85°C [-40°F / +185°F].

This HD67507-A1/B2 is able to manage a maximum of ten simultaneous connections from Ethernet side.

It can be used in two operative ways:

- In the “**Routing Mode**” the command Modbus is forwarded on the serial line using the same requested addresses.
- In the “**Natting Mode**” the device addresses and data are altered through a translation table of the addresses.



CONFIGURATION:

You need Compositor SW67507 software on your PC in order to perform the following:

- Define the parameters of Modbus TCP line;
- Define the parameters of Modbus Serial line;
- Update the device.

POWER SUPPLY:

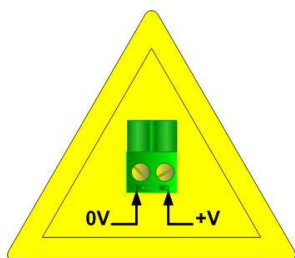
The devices can be powered at 8...24V AC and 12...35V DC. For more details see the two tables below.

VAC 		VDC 	
Vmin	Vmax	Vmin	Vmax
8V	24V	12V	35V

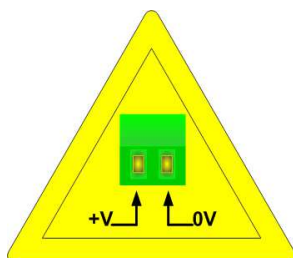
Consumption at 24V DC:

Device	Consumption [W/VA]
HD67507-A1	3.5
HD67507-B2	3.5
HD67507-WiFi-A1	3.5

 **Caution: Not reverse the polarity power**



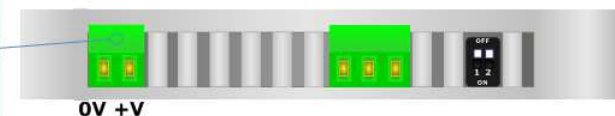
HD67507-A1
HD67507-WiFi-A1



HD67507-B2

Connector1:
Power Supply port
0V = Ground
+V = Positive wire
V AC: min 8V ; max 24V
V DC: min 12V ; max 35V

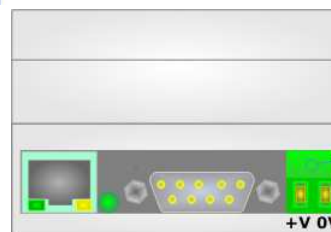
Connector1:
Power Supply port
0V = Ground
+V = Positive wire
V AC: min 8V ; max 24V
V DC: min 12V ; max 35V



0V +V



0V +V



Connector1:
Power Supply port
0V = Ground
+V = Positive wire
V AC: min 8V ; max 24V
V DC: min 12V ; max 35V

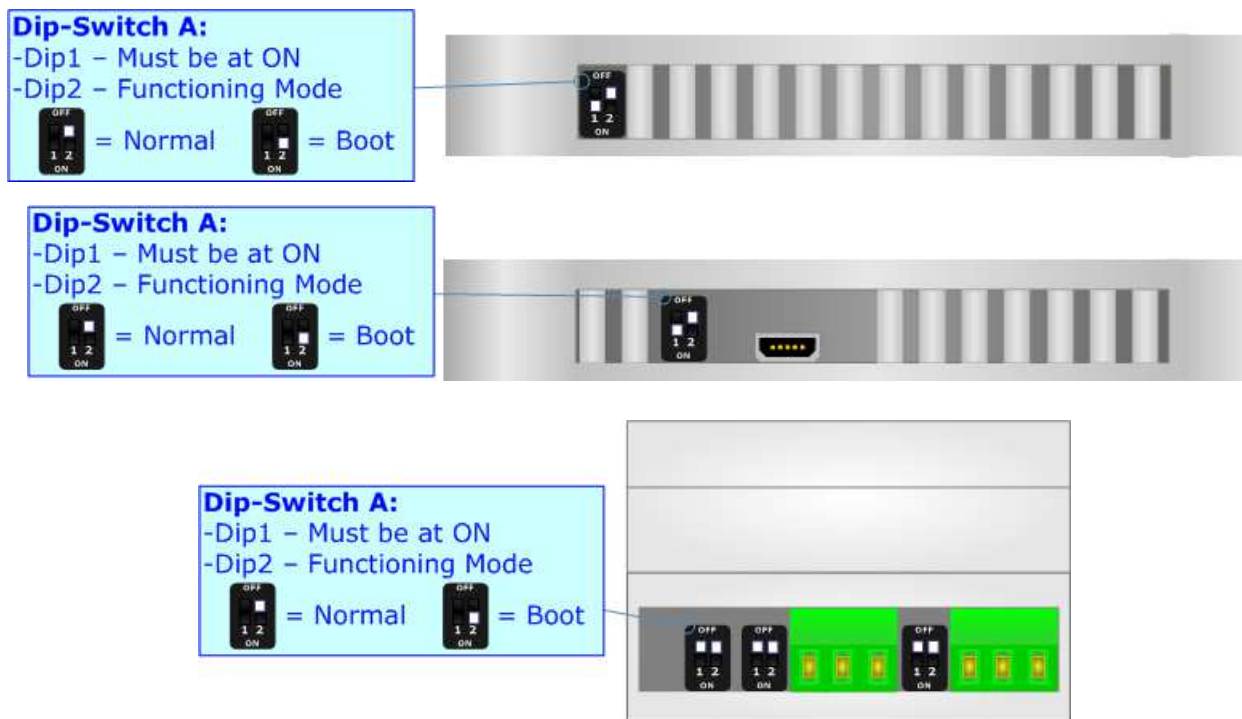
FUNCTION MODES:

The device has got two function modes depending on the position of the 'Dip2 of Dip-Switch A':

- The first, with 'Dip2 of Dip-Switch A' at "OFF" position, is used for the normal working of the device.
- The second, with 'Dip2 of Dip-Switch A' at "ON" position, is used for uploading the Project and/or Firmware.

For the operations to follow for the updating, see 'UPDATE DEVICE' section.

According to the functioning mode, the LEDs will have specific functions, see 'LEDS' section.



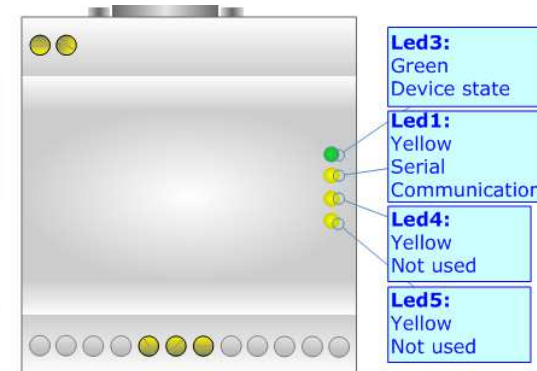
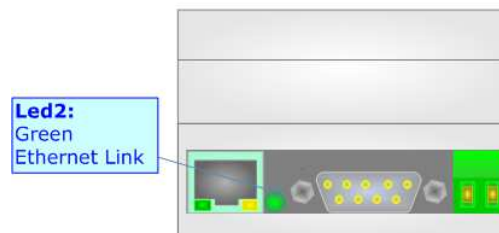
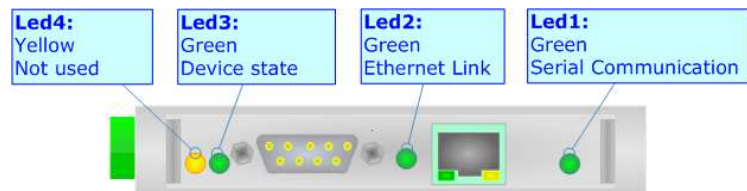
Warning:

Dip1 of 'Dip-Switch A' must be at ON position to work even if the Ethernet cable is not inserted.

LEDS (for HD67507-A1 and HD67507-B2):

The devices has got four (five for HD67507-B2) LEDs that are used to give information of the functioning status.
The various meanings of the LEDs are described in the table below.

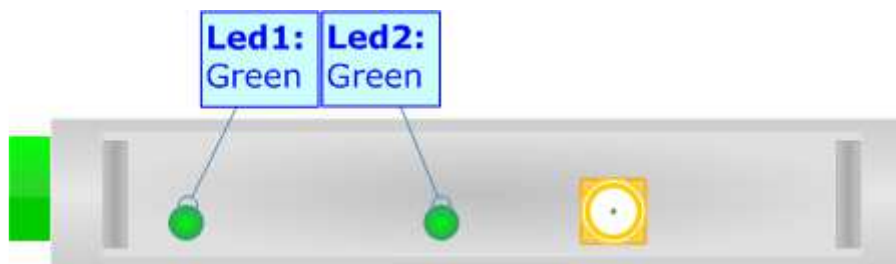
LED	Normal Mode	Boot Mode
1: Serial Communication (green)	Blinks when Modbus frame (RS232/RS485) are received	Blinks quickly: Boot state Blinks very slowly (~0.5Hz): update in progress
2: Ethernet Link (green)	ON: Ethernet cable connected OFF: Ethernet cable disconnected	ON: Ethernet cable connected OFF: Ethernet cable disconnected
3: Device state (green)	Blinks slowly (~1Hz)	Blinks quickly: Boot state Blinks very slowly (~0.5Hz): update in progress
4: Not used (yellow)	OFF	Blinks quickly: Boot state Blinks very slowly (~0.5Hz): update in progress
5: Not used (yellow) (Present only on HD67507-B2)	OFF	Blinks quickly: Boot state Blinks very slowly (~0.5Hz): update in progress



LEDS (for HD67507-WiFi-A1):

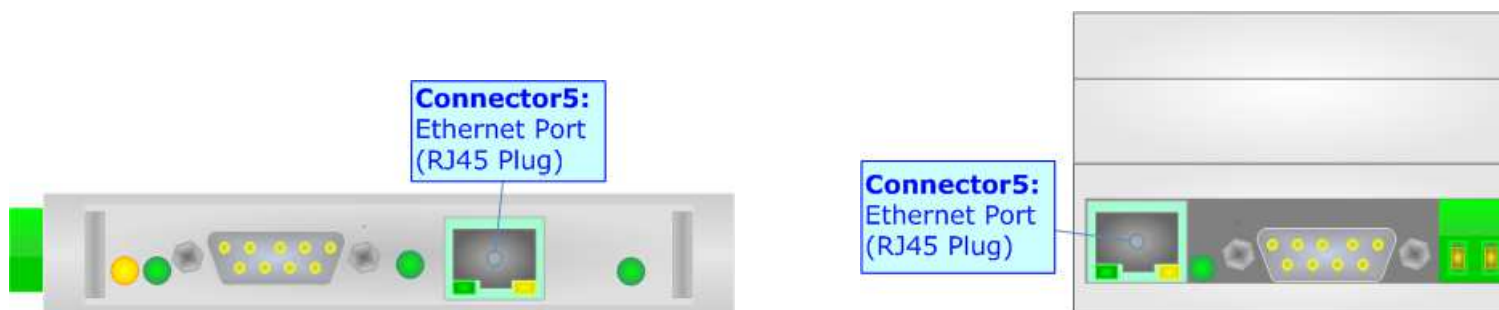
The devices has got two LEDs that are used to give information of the functioning status.
The various meanings of the LEDs are described in the table below.

LED	Normal Mode	Boot Mode
1: Serial comm. (green)	Change state when receive a Modbus frame	Blinks quickly: Boot state Blinks very slowly (~0.5Hz): update in progress
2: Wi-Fi state (green)	Blinks very slowly (~0.5Hz): Wi-Fi scanning Blinks slowly (~1Hz): Wi-Fi connection Blinks quickly: TCP connection opened or UDP message received	Blinks quickly: Boot state Blinks very slowly (~0.5Hz): update in progress



ETHERNET (for HD67507-A1 and HD67507-B2):

The Ethernet connection must be made using Connector5 of HD67507-A1/HD67507-B2 with at least a Category 5E cable. The maximum length of the cable should not exceed 100m. The cable has to conform to the T568 norms relative to connections in cat.5 up to 100 Mbps. To connect the device to a Hub/Switch the use of a straight cable is recommended. To connect the device to a PC/PLC/other the use of a cross cable is recommended.

**Wi-Fi (for HD67507-WiFi-A1):**

The Wi-Fi connection is done over the Connector6 (Antenna). The Antenna connector is a SMA Female ('Female Outer Shell' and 'Female Receptacle') so the Antenna must have a SMA Male connector.

The type of Wi-Fi used is the 802.11b/g.

The converter supports different type of security protocol: WEP, WPA, WPA2 and none.



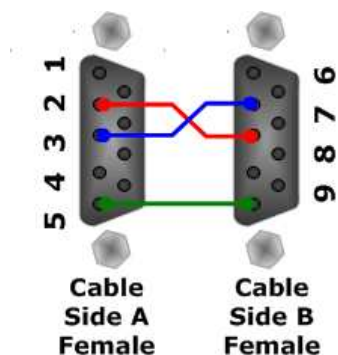
RS232:

The connection from RS232 socket to a serial port (example one from a personal computer) must be made with a Null Modem cable (a serial cable where the pins 2 and 3 are crossed).

It is recommended that the RS232 cable not exceed 15 meters.

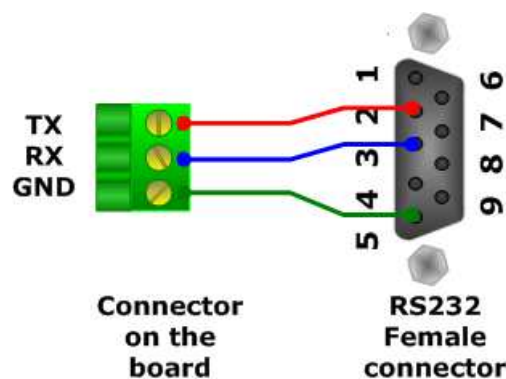
The HD67507-A1/B2 is provided with a D-sub connector type DE-9 Male (also called DB-9). The cable must use a DE-9 Female connector.

The serial port is used for programming the device and for Modbus communication.



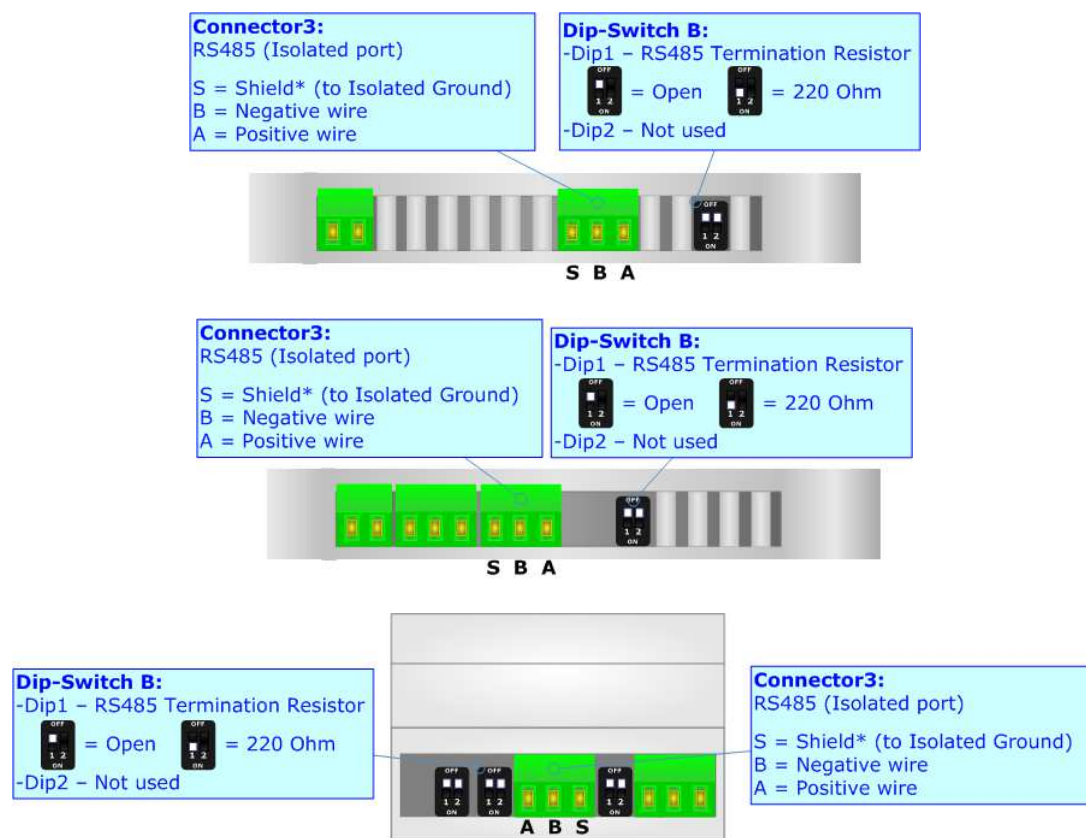
The HD67507-WiFi-A1 is provided with a 3way 5mm removable screw terminal.

The serial port is used for Modbus communication.



RS485:

To terminate the RS485 line with a 220Ω resistor, it is necessary to put dip 1 ON, like in figure.



The maximum length of the cable should be 1200m (4000 feet).

Here some codes of cables:

- Belden: p/n 8132 - 2x 28AWG stranded twisted pairs conductor + foil shield + braid shield;
- Belden p/n 82842 - 2x 24AWG stranded twisted pairs conductor + foil shield + braid shield;
- Tasker: p/n C521 - 1x 24AWG twisted pair conductor + foil shield + braid shield;
- Tasker: p/n C522 - 2x 24AWG twisted pairs conductor + foil shield + braid shield.

USE OF COMPOSITOR SW67507:

To configure the Converter, use the available software that runs with Windows called SW67507. It is downloadable on the site www.adfweb.com and its operation is described in this document. (*This manual is referenced to the last version of the software present on our web site*). The software works with MSWindows (XP, Vista, Seven, 8; 32/64bit).

When launching the SW67507, the window below appears (Fig. 2).

**Note:**

The minimum version of the configuration software must be the 2.000.

**Note:**

It is necessary to have installed .Net Framework 4.

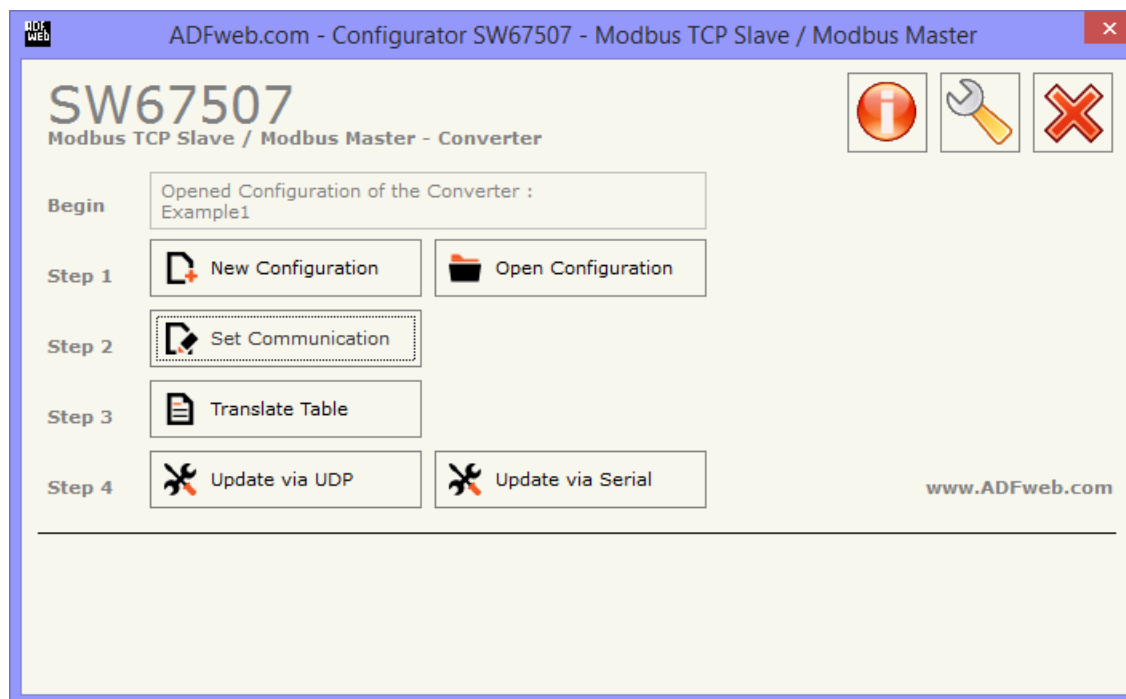
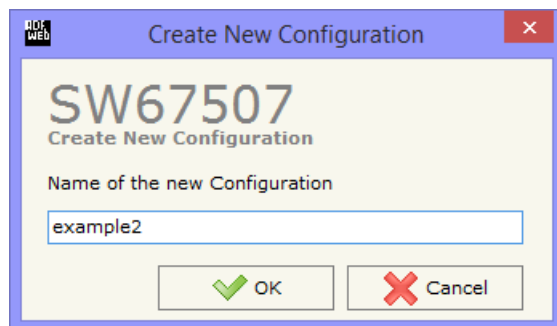


Figure 2: Main window for SW67507

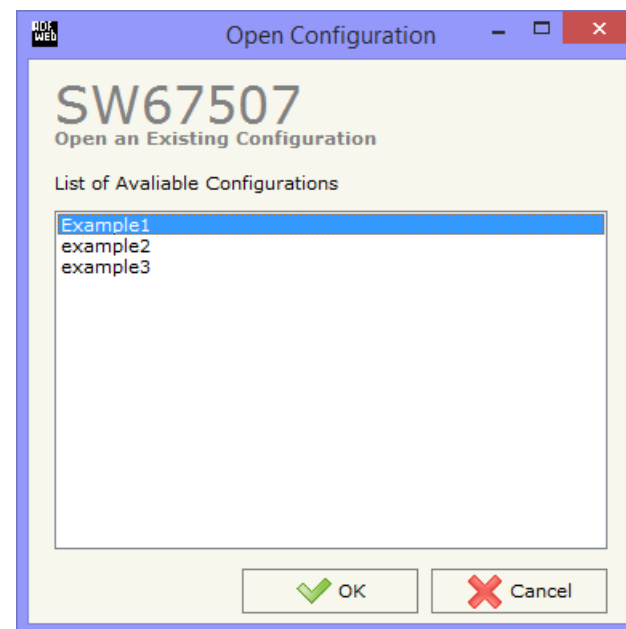
NEW CONFIGURATION / OPEN CONFIGURATION:

The “**New Configuration**” button creates the folder which contains the entire device’s configuration.




A device’s configuration can also be imported or exported:

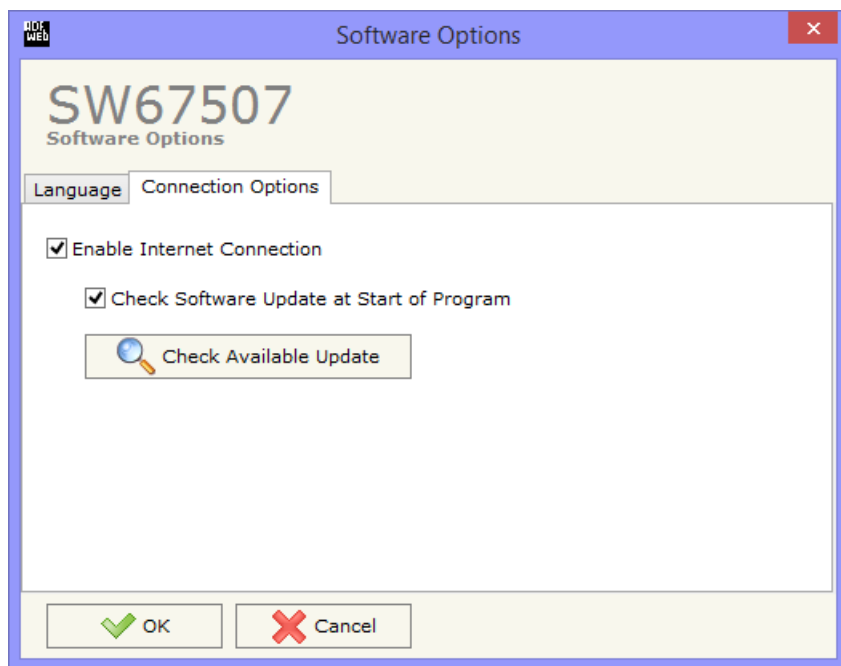
- To clone the configurations of a programmable “Modbus TCP Slave / Modbus Master - Converter” in order to configure another device in the same manner, it is necessary to maintain the folder and all its contents;
- To clone a project in order to obtain a different version of the project, it is sufficient to duplicate the project folder with another name and open the new folder with the button “**Open Configuration**”.



SOFTWARE OPTIONS:

By pressing the “**Settings**” () button there is the possibility to change the language of the software and check the updatings for the compositor.

In the section “Language” it is possible to change the language of the software.



In the section “Connection Options”, it is possible to check if there are some updatings of the software compositor in ADFweb.com website. Checking the option “**Check Software Update at Start of Program**”, the SW67507 check automatically if there are updatings when it is launched.

SET COMMUNICATION:

This section defines the fundamental communication parameters of two Buses, Modbus and Modbus TCP.

By pressing the "Set Communication" button from the main window for SW67507 (Fig. 2) the window "Set Communication" appears (Fig. 3).

In the section "Select Device" is possible to select the type of converter used:

- HD67507-A1/B2 (Modbus TCP on Ethernet);
- HD67507-WiFi-A1 (Modbus TCP on Wi-Fi).

The section "Operation Mode" defines the operation of the Converter in "**Routing Mode**" or "**NAT Mode**" (see the description at page 16).

If selected "HD67507-A1/B2" the means of the fields for "Modbus TCP Slave" are:

- In the field "**IP Address**" insert the IP address that you want to give to the slave Modbus TCP;
- In the field "**Subnet Mask**" insert the SubNet Mask;
- In the fields "**GATEWAY**" insert the default gateway that you want to use. This feature can be enabled or disabled pressing the Check Box field. This feature is used for going out of the net;
- In the field "**Port**" the port used for Modbus TCP communication is defined;
- Checking "**Enable UDP Port**" field it is possible to do a Broadcast request. This request must be made at Port 64223 (\$FADF) with these six byte of data: \$53, \$45, \$41, \$52, \$43, \$48. Each device in response sends a total of 10 Bytes. These bytes are four for the IP and the other for the

MAC address (Example of response: 0xC0, 0xA8, 0x01, 0x2A, 0x11, 0x22, 0x33, 0x44, 0x55, 0x58. So the IP is: 192.168.1.42; and the MAC Address: 11-22-33-44-55-58);

Figure 3a: "Set Communication" window

- If the field "**Enable Special Command**" is checked, it is possible to send a no-Modbus request through the Converter. i.e. a TCP frame with the first two characters 0x55 and 0xAA is sent in the Modbus RTU line as is. If you don't want to send the first two bytes (0x55, 0xAA) in the RTU line it is possible to check the field "**Cancel the first two bytes**";
- If the field "**Fast StartUp (only 100Mb/s)**" is checked, the Converter take less time to go online. This command can use only if the Converter is used in a 100Mb/s network;
- If the field "**No TCP frame on RTU Timeout**" is checked, the Converter don't sends back the reply on TCP (error response) if the Slave RTU interrogated has not replied.

The means for the fields of "Modbus Master" are the same for all the Device Type:

- If the field "**RS232**" is checked the serial line in use is the RS232, otherwise is the "**RS485**";
- In the field "**Baud rate**" the velocity of the Modbus RTU is defined;
- In the field "**Parity**" the Modbus RTU parity is defined;
- "**Timeout**" is the maximum time that the device attends for the answer from the Slave interrogated;
- In the field "**RS485 Stop bits**" the number of Stop-Bit of Modbus RTU is defined;
- If the field "**Communication Idle Time (ms)**" is checked the Converter, before send another Modbus RTU request, waits the time written in the field below (expressed in ms).

If selected "HD67507-WiFi-A1" the means of the fields for "Modbus TCP Slave (Wi-Fi)" are:

- In the field "**IP Address**" insert the IP address of the Gateway;
- In the field "**SubNet Mask**" insert the Subnet Mask;
- In the field "**Gateway**" insert the default gateway that you want to use. This feature can be enabled or disabled pressing the Check Box field. This feature is used for going out of the net;
- In the field "**Port**" insert the number of port;
- In the field "**SSID**" insert the name of the Wi-Fi network;
- In the field "**Password**" insert the password used to connect to the Wi-Fi network;
- In the field "**Type**", the type of security protocol used by the Wi-Fi network.

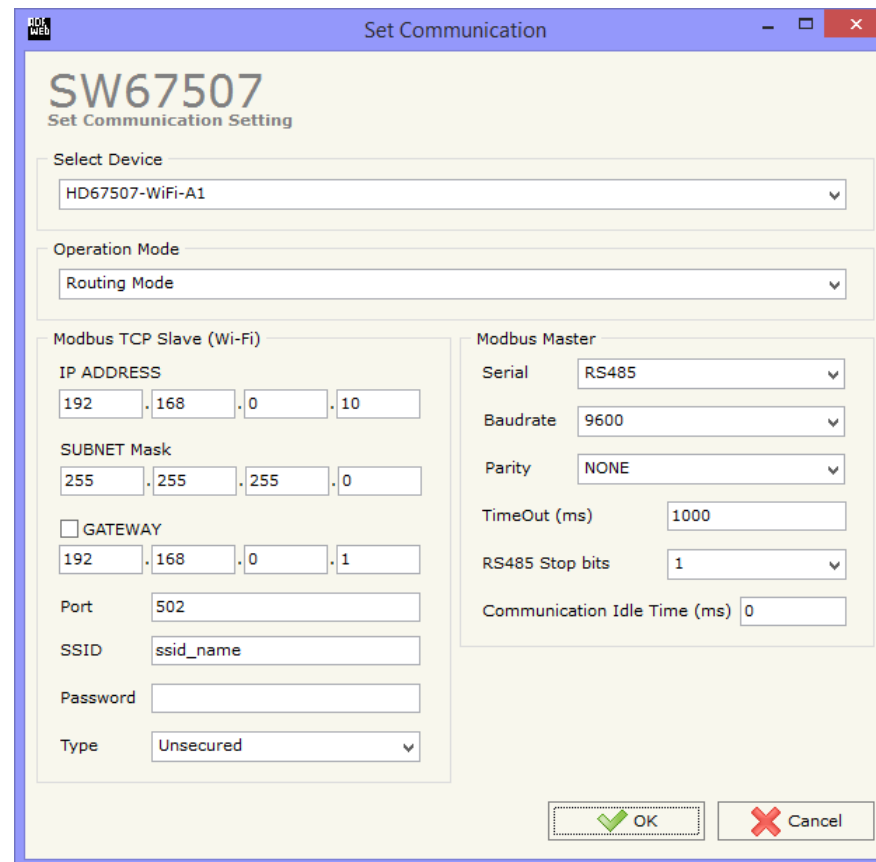


Figure 3b: "Set Communication" window

OPERATION MODE:**ROUTING:**

A few characteristics of the Modbus RTU package have been modified in the standard of the Modbus TCP protocol. Two bytes of the final CRC were eliminated (no longer necessary for the information to reach its already corrected destination). The first byte of the slave identification was changed, leaving the one that is called PDU. A frame denominated as MBAP header with dimensions of 7 bytes was added to the head of the PDU.

It is composed by the following:

- Word transaction identifier (recopied from the slave in the response phase);
- Word protocol identifier (0=Modbus protocol);
- Word length (number of successive bytes);
- Byte unit identifier (used for the routing operation).

By using the last byte of the MBAP header, it is possible to carry out the routing from a requested Modbus TCP toward a serial line using the address from the slave which is specified by the byte unit identifier.

Example:

A requested Modbus TCP made in the device as the address 192.168.0.200 for the holding register address \$2000, which is MBAP unit identifier has the value of 2. It will be followed by the request on the serial for the device with the address 2 at the word \$2000.

After the request is made, the RTU will respond. The master TCP will be given the same response which will be reconstructed according to the specifications of the Modbus TCP.

If the RTU slave responds with an exception, that exception code will be transmitted again to the TCP master. If the RTU slave does not respond in the estimated time defined by the Timeout parameter, an exception response will be given: error code \$0B.

NATting:

When using the operation mode, Natting, the requested data will be processed through a table of translations of the Modbus network addresses.

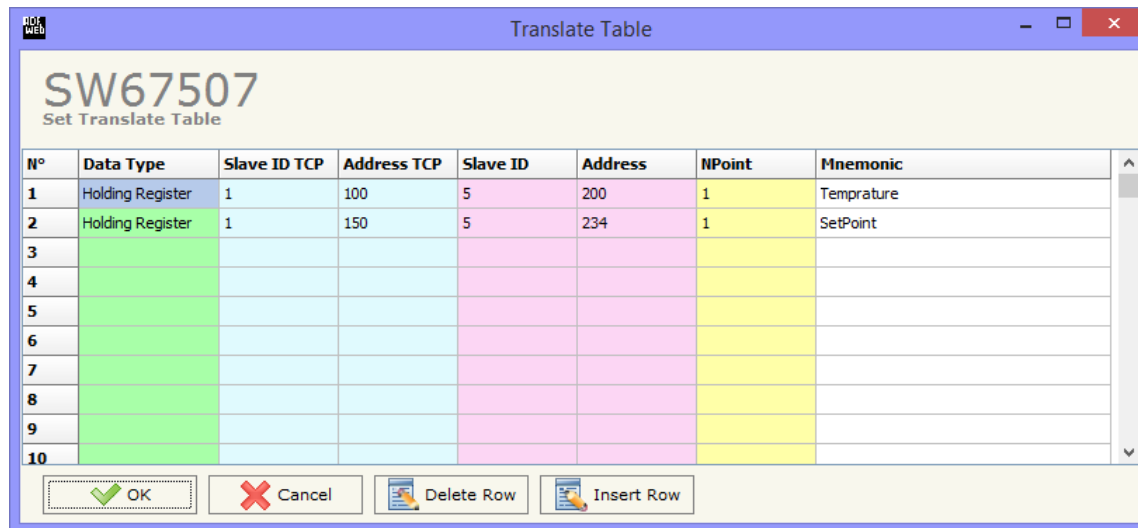
TRANSLATE TABLE:

Within the section "Translate Table" you can define the variables that can be read or written by the TCP bus on the RTU bus when the device is in NAT mode.

By pressing the "**Translate Table**" button from the main window for SW67507 (Fig. 2), the window "Set Translate Table" appears (Fig. 4).

The data of the columns have the following meanings:

- In the field "**Data Type**" insert the type of data that is being considered;
- In the field "**Slave ID TCP**" insert the virtual address of the present data in a device in the TCP Modbus;
- In the field "**Address TCP**" insert the address of the device on the RTU Modbus that contains the data;
- In the field "**Slave ID**" insert the ID of the Modbus slave to poll;
- In the field "**Address**" insert the address of the data on the RTU device;
- In the field "**N° Point**" insert the number of consecutive data that you want to configure. For example, you create Address TCP=1000, Address RTU=100 and N° point = 5, the following gets set-up automatically: addresses TCP 1001, 1002, 1003, 1004 and the variables RTU 101, 102, 103, 104;
- In the field "**Mnemonic**" you can insert a brief description.



N°	Data Type	Slave ID TCP	Address TCP	Slave ID	Address	NPoint	Mnemonic
1	Holding Register	1	100	5	200	1	Temperature
2	Holding Register	1	150	5	234	1	SetPoint
3							
4							
5							
6							
7							
8							
9							
10							

Figure 4: "Set Translate Table" window

Example 1:

If you want, from TCP network, write a data it the RTU network on the device at:

- Address 5;
- Through Gateway WORD 100 (Address RTU);
- Address TCP 1000.

In the above scenario:

Specify the type of data between:

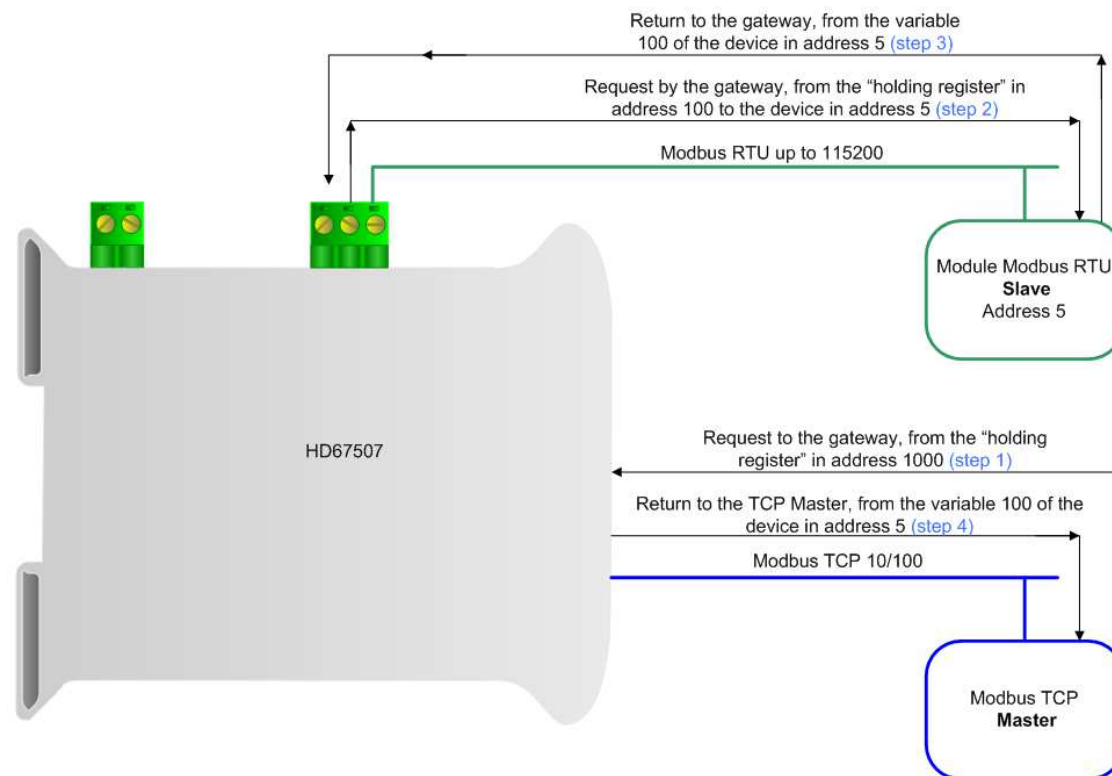
- Coil Status (bit in read write);
- Input Status (bit in read);
- Holding Register (word in read and write);
- Input Register (word in read).

From the side of the MODBUS TCP:

- Address of data to read.

From the side of the MODBUS RTU:

- Address of the device to interrogate;
- Address of data to read on device.



Note:

If the RTU slave responds with an exception, that exception code will be transmitted to the TCP Master. If the RTU slave does not respond within the estimated time defined by the Timeout parameter, an exception response will be given on TCP side: error code \$0B.

UPDATE VIA SERIAL/USB:

By pressing the **"Update Via USB"** button it is possible to load the created Configuration into the device, and also the Firmware if is necessary, using the RS232/USB port.

In order to load the parameters or update the firmware in the device, follow these instructions:

- Turn off the Device;
- Connect the RS232/USB cable fromm your PC to the Converter;
- Put Dip2 of 'Dip-Switch A' in ON position;
- Select the **"COM port"** and press the **"Connect"** button;
- Turn on the device;
- Check the "Device state" Led. It must blink quickly (see "LEDS" section);
- Press the **"Next"** button;
- Select which operations you want to do.
- Press the **"Execute update firmware"** button to start the upload;
- When all the operations are "OK" turn off the device;
- Put Dip2 of 'Dip-Switch A' in OFF position;
- Disconnect the RS232/USB cable;
- Turn on the device.



Note:

The USB updating is available for the HD67507-WiFi-A1 and the RS232 updating for the HD67507-A1/B2.

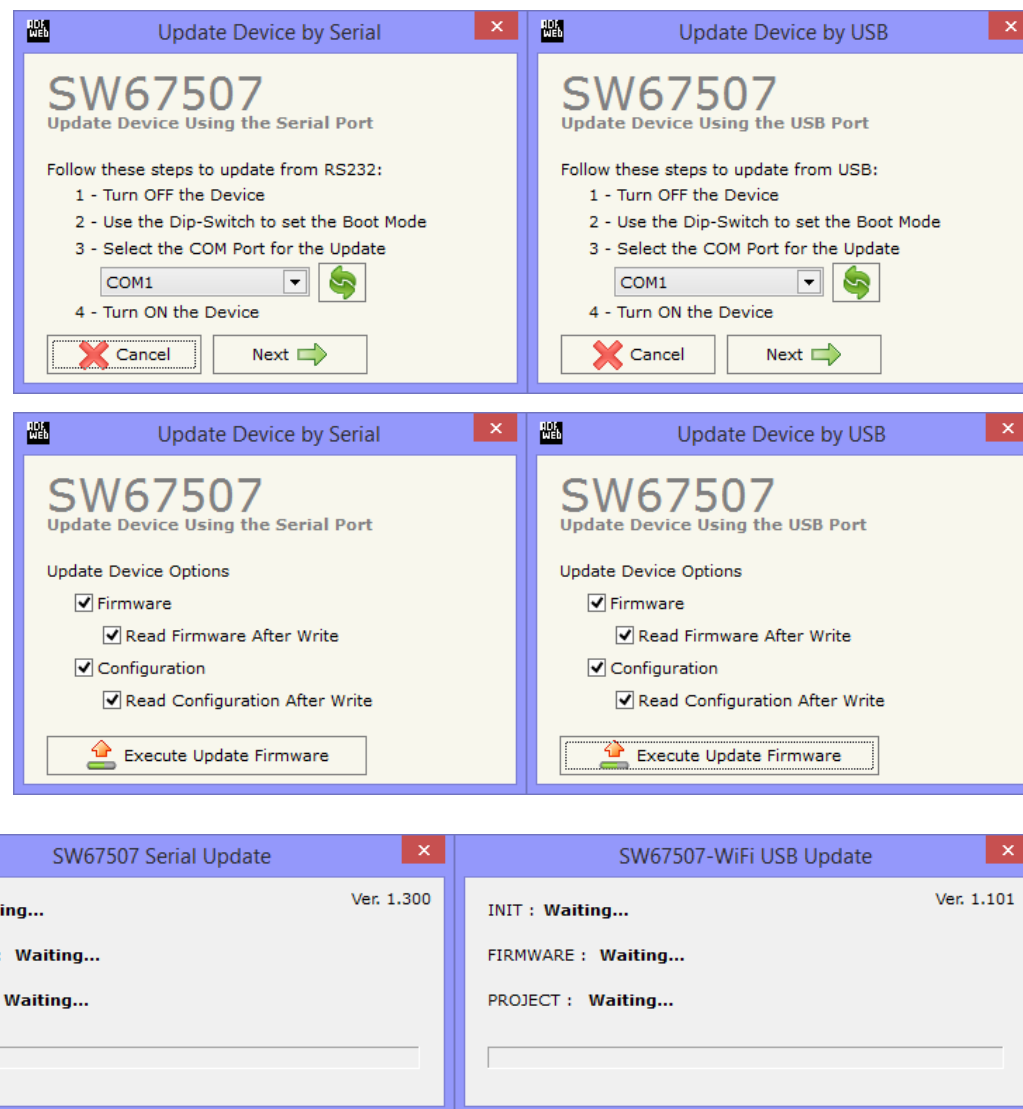


Figure 5: "Update via Serial/USB" windows

UPDATE VIA UDP (for HD67507-A1/B2):

By pressing the **"Update Device"** button, it is possible to load the created Configuration into the device; and also the Firmware, if necessary.

If you don't know the actual IP address of the device you have to use this procedure:

- Turn off the Device;
- Put Dip2 of 'Dip-Switch A' in ON position;
- Turn on the device
- Connect the Ethernet cable;
- Insert the IP **"192.168.2.205"**;
- Press the **"Ping"** button, "Device Found! must appear";
- Press the **"Next"** button;
- Select which operations you want to do;
- Press the **"Execute update firmware"** button to start the upload;
- When all the operations are "OK" turn off the Device;
- Put Dip2 of 'Dip-Switch A' in OFF position;
- Turn on the device.

At this point the configuration/firmware on the device is correctly updated.

If you know the actual IP address of the device, you have to use this procedure:

- Turn on the Device with the Ethernet cable inserted;
- Insert the actual IP of the Converter;
- Press the **"Ping"** button, must appear "Device Found!";
- Press the **"Next"** button;
- Select which operations you want to do;
- Press the **"Execute update firmware"** button to start the upload;
- When all the operations are "OK" the device automatically goes at Normal Mode.

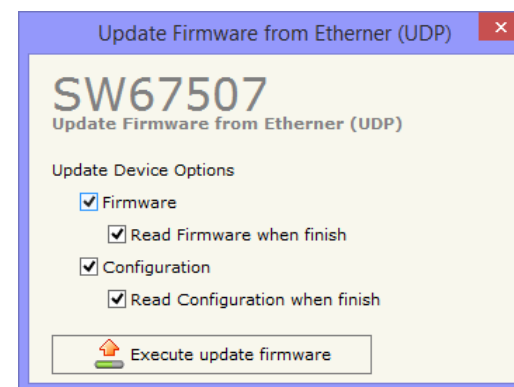
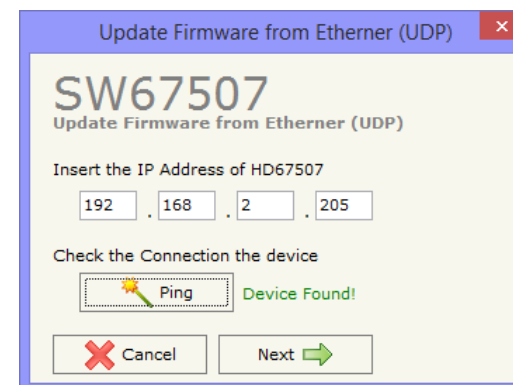


Figure 6: "Update via UDP" windows

UPDATE VIA UDP (for HD67507-WiFi-A1):

By pressing the **"Update Device"** button, it is possible to load the created Configuration into the device; and also the Firmware, if necessary. This updating is done over Wi-Fi: it is necessary to have updated by USB the Wi-Fi parameters to use this type of updating.

After the first updating over USB, you have to use this procedure:

- Turn on the Device;
- Wait for the Wi-Fi connection;
- Insert the actual IP of the Converter;
- Press the **"Ping"** button, must appear "Device Found!";
- Press the **"Next"** button;
- Select which operations you want to do;
- Press the **"Execute update firmware"** button to start the upload;
- When all the operations are "OK" the device automatically goes at Normal Mode.

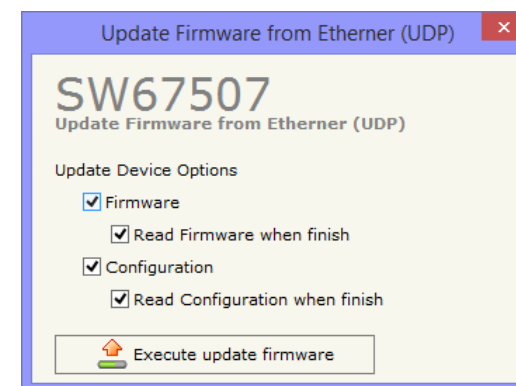
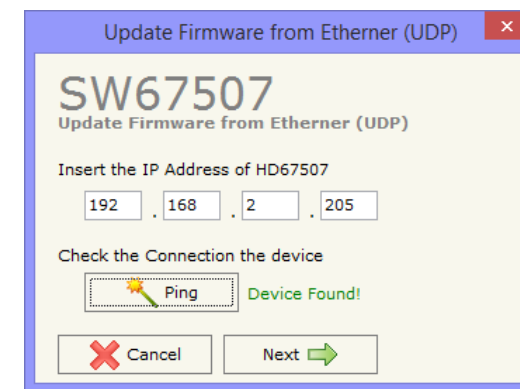


Figure 7: "Update via UDP" windows


Note:

When you install a new version of the software, if it is the first time it is better you do the update of the Firmware in the HD67507 device.


Note:

When you receive the device, for the first time, you also have to update the Firmware in the HD67507 device.


Warning:

If Fig. 6 appears when you try to do the Update try these points before seeking assistance:

- Check if the serial COM port selected is the correct one;
- Check if the serial cable is connected between the PC and the device;
- Try to repeat the operations for the updating;
- If you are using a USB↔RS232 converter try with a native COM port or change the converter;
- Try to repeat the operations for the updating;
- Try with another PC;
- Try to restart the PC;
- Check the LAN settings;
- Check the Wi-Fi settings;
- If you are using the program inside a Virtual Machine, try to use in the main Operating System;
- If you are using Windows Seven, Vista and 8 make sure that you have the administrator privileges;
- In case you have to program more than one device, using the "UDP Update", you have to cancel the ARP table every time you connect a new device on Ethernet. For do this you have to launch the "Command Prompt" and write the command "arp -d". Pay attention that with Windows Vista, Seven, 8 you have to launch the "Command Prompt" with Administrator Rights;
- Pay attention at Firewall lock.

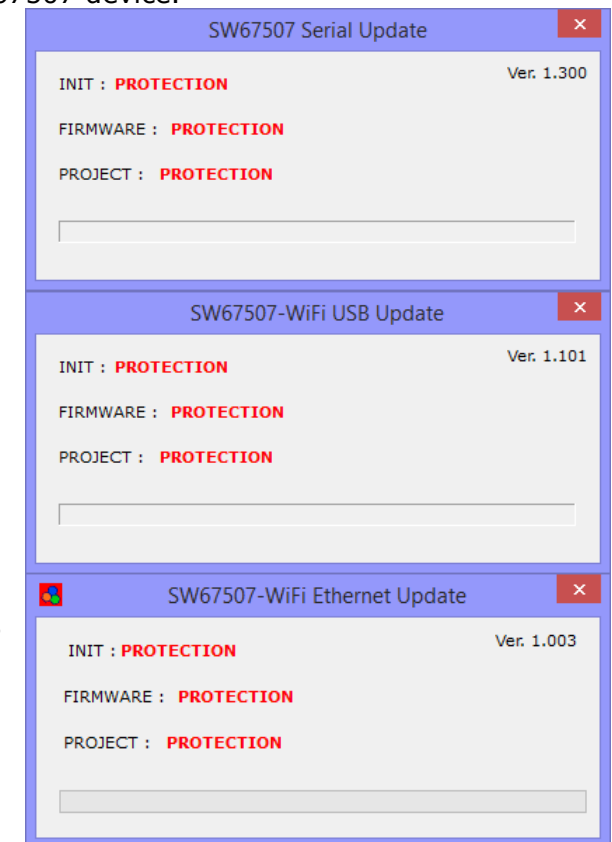
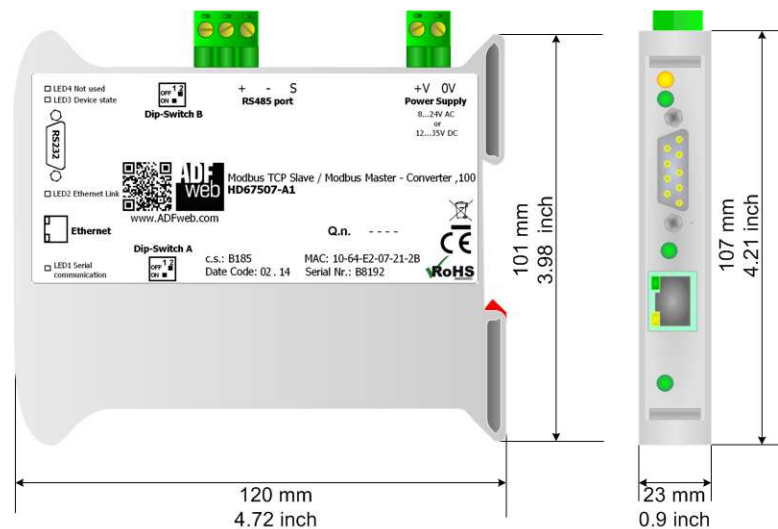


Figure 8: "Protection" window

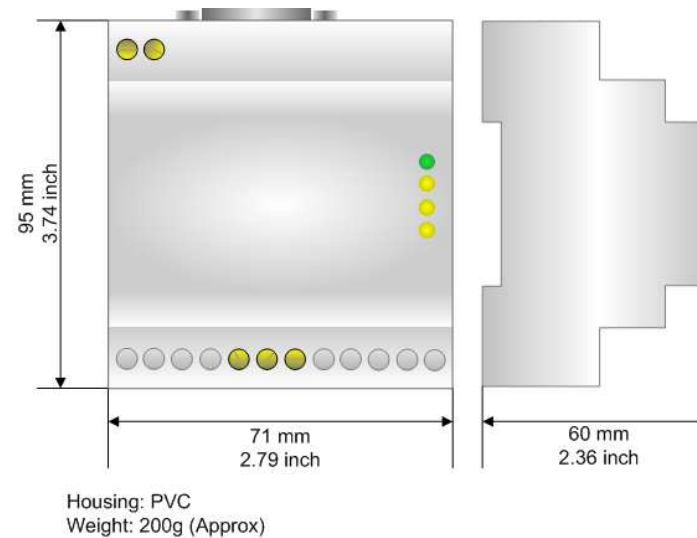
In the case of HD67507 you have to use the software "SW67507": www.adfweb.com/download/filefold/SW67507.zip.

MECHANICAL DIMENSIONS:



Housing: PVC
Weight: 200g (Approx)

Figure 9a: Mechanical dimensions scheme for HD67507-A1



Housing: PVC
Weight: 200g (Approx)

Figure 9b: Mechanical dimensions scheme for HD67507-B2

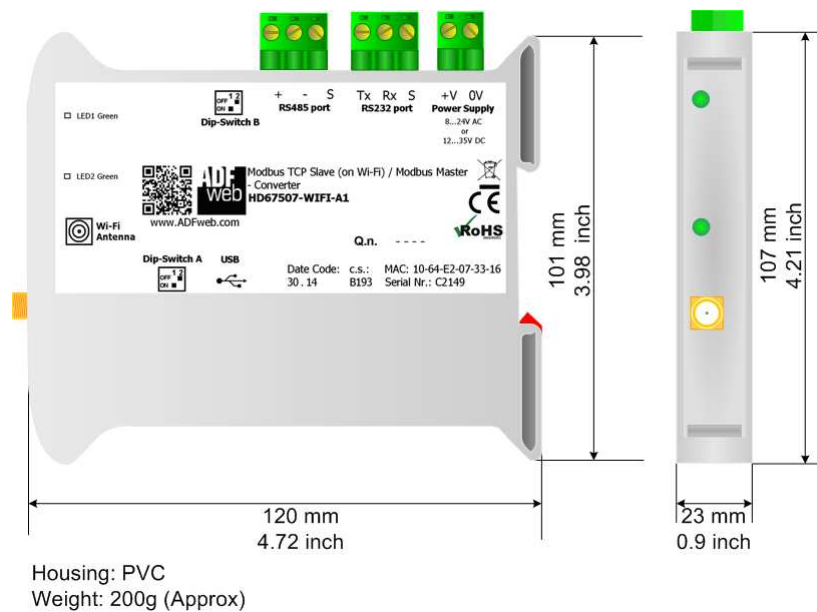


Figure 9c: Mechanical dimensions scheme for HD67507-WiFi-A1

ORDERING INFORMATION:

The ordering part number is formed by a valid combination of the following:

HD67507 - xxxx - xx

Connectors Type

- 1: Removable 5mm Screw Terminal
- 2: Fixed 5mm Screw Terminal

Enclosure Type

- A: 1M, 35mm DIN Rail mounting
- B: 4M, 35mm DIN Rail mounting

Modbus TCP communication type:

- None: Modbus TCP over Ethernet
- WiFi: Modbus TCP over Wi-Fi

Device Family

- HD67507: Modbus TCP Slave / Modbus Master - Converter

- Order Code: **HD67507-A1** - Modbus TCP Slave / Modbus Master - Converter (Housing type: A, Terminal Blocks Connectors)
- Order Code: **HD67507-B2** - Modbus TCP Slave / Modbus Master - Converter (Housing type: B, Terminal Blocks Connectors)
- Order Code: **HD67507-WiFi-A1** - Modbus TCP Slave / Modbus Master - Converter (Housing type: B, Terminal Blocks Connectors)

ACCESSORIES:

- Order Code: **AC34107** - Null Modem Cable Fem/Fem D-sub 9 Pin 1,5 m
- Order Code: **AC34114** - Null Modem Cable Fem/Fem D-sub 9 Pin 5 m
- Order Code: **AC34001** - Rail DIN - Power Supply 220/240V AC 50/60Hz – 12 V AC
- Order Code: **AC34002** - Rail DIN - Power Supply 110V AC 50/60Hz – 12 V AC

DISCLAIMER:

All technical content within this document can be modified without notice. The content of the document is a under continual renewal. For losses due to fire, earthquake, third party access or other accidents, or intentional or accidental abuse, misuse, or use under abnormal conditions repairs are charged to the user. ADFweb.com S.r.l. will not be liable for accidental loss of use or inability to use this product, such as loss of business income. ADFweb.com S.r.l. shall not be liable for consequences of improper use.

OTHER REGULATIONS AND STANDARDS:**WEEE INFORMATION**

Disposal of old electrical and electronic equipment (as in the European Union and other European countries with separate collection systems).

■ This symbol on the product or on its packaging indicates that this product may not be treated as household rubbish. Instead, it should be taken to an applicable collection point for the recycling of electrical and electronic equipment. If the product is disposed correctly, you will help prevent potential negative environmental factors and impact of human health, which could otherwise be caused by inappropriate disposal. The recycling of materials will help to conserve natural resources. For more information about recycling this product, please contact your local city office, your household waste disposal service or the shop where you purchased the product.

RESTRICTION OF HAZARDOUS SUBSTANCES DIRECTIVE

The device respects the 2002/95/EC Directive on the restriction of the use of certain hazardous substances in electrical and electronic equipment (commonly referred to as Restriction of Hazardous Substances Directive or RoHS).

CE MARKING

The product conforms with the essential requirements of the applicable EC directives.

WARRANTIES AND TECHNICAL SUPPORT:

For fast and easy technical support for your ADFweb.com SRL products, consult our internet support at www.adfweb.com. Otherwise contact us at the address support@adfweb.com

RETURN POLICY:

If while using your product you have any problem and you wish to exchange or repair it, please do the following:

- Obtain a Product Return Number (PRN) from our internet support at www.adfweb.com. Together with the request, you need to provide detailed information about the problem.
- Send the product to the address provided with the PRN, having prepaid the shipping costs (shipment costs billed to us will not be accepted).

If the product is within the warranty of twelve months, it will be repaired or exchanged and returned within three weeks. If the product is no longer under warranty, you will receive a repair estimate.

**ADFweb.com S.r.l.**

Via Strada Nuova, 17
IT-31010 Maren di Piave
TREVISO (Italy)
Phone +39.0438.30.91.31
Fax +39.0438.49.20.99
www.adfweb.com

