

RFID READER

13.56MHz Reader/Writer

SL500

User Manual

Version 2.6

Dec 2009

StrongLink

CONTENT

1. GENERAL INFORMATION	5
2. TYPES AND EXPLANATION.....	6
3. CONNECTING TO PC.....	6
3.1 SL500-RS232	6
3.2 SL500-USB.....	7
4. SDK.....	8
5. DEMO.....	8
5.1 ONLINE.....	8
5.2 SHC1102.....	9
5.3 ULTRALIGHT	9
5.4 ULTRALIGHT C.....	10
5.5 MIFARE_1K (STD S50)	10
5.6 MIFARE_4K (STD S70)	11
5.7 MIFARE_PROX.....	11
5.8 TRH1064.....	12
5.10 SRIX4K.....	13
5.11 AT88RF020.....	13
5.12 ISO14443B-4 PROTOCOL SMART CARD.....	14
5.13 I.CODE SLI.....	14
5.14 TAG_IT.....	15
5.15 SRF55V02P.....	15
5.16 SRF55V10P.....	16
5.17 PASS_THROUGH.....	16
6. DLL INFORMATION.....	17
6.1 SYSTEM FUNCTION	17
6.1.1 INT WINAPI LIB_VER	17
6.1.2 INT WINAPI RF_INIT_COM	17
6.1.3 INT WINAPI RF_CLOSEPORT	17
6.1.4 INT WINAPI RF_GET_MODEL	17
6.1.5 INT WINAPI RF_INIT_DEVICE_NUMBER	17
6.1.7 INT WINAPI RF_INIT_TYPE	18
6.1.8 INT WINAPI RF_ANTENNA_STA.....	18
6.1.9 INT WINAPI RF_LIGHT	18
6.1.10 INT WINAPI RF_BEEP	18
6.2 DES FUNCTION.....	19
6.2.1 INT WINAPI DES_ENCRYPT	19

6.2.2 INT WINAPI DES_DECRYPT	19
6.3 ISO14443A FUNCTION.....	19
6.3.1 UltraLight.....	19
6.3.1.1 INT WINAPI RF_REQUEST	19
6.3.1.2 INT WINAPI RF_UL_SELECT	20
6.3.1.3 INT WINAPI RF_M1_READ.....	20
6.3.1.4 INT WINAPI RF_UL_WRITE.....	20
6.3.1.5 INT WINAPI INT RF_UC_AUTHENTICATION	20
6.3.1.6 INT WINAPI RF_UC_CHANGEKEY	21
6.3.1.7 INT WINAPI RF_HALT.....	21
6.3.2 Mifare Class	22
6.3.2.1 INT WINAPI RF_REQUEST	22
6.3.2.2 INT WINAPI RF_ANTICOLL.....	22
6.3.2.3 INT WINAPI RF_SELECT	22
6.3.2.4 INT WINAPI RF_M1_AUTHENTICATION2.....	23
6.3.2.5 INT WINAPI RF_M1_READ.....	23
6.3.2.6 INT WINAPI RF_M1_WRITE.....	23
6.3.2.7 INT WINAPI RF_M1_INITVAL.....	23
6.3.2.8 INT WINAPI RF_M1_READVAL	24
6.3.2.9 INT WINAPI RF_M1_INCREMENT	24
6.3.2.10 INT WINAPI RF_M1_DECREMENT	24
6.3.2.11 INT WINAPI RF_M1_RESTORE.....	24
6.3.2.12 INT WINAPI RF_M1_TRANSFER	24
6.3.2.13 INT WINAPI RF_HALT	25
6.3.3 Mifare_DESFire	25
6.3.3.1 INT WINAPI RF_DESFIRE_RST.....	25
6.3.3.2 INT WINAPI RF_COS_COMMAND	25
6.3.4 Mifare_ProX	26
6.3.4.1 INT WINAPI RF_TYPE_RST.....	26
6.3.4.2 INT WINAPI RF_COS_COMMAND.....	26
6.3.4.3 INT WINAPI RF_CL_DESELECT	26
6.3.5 SHC1102.....	26
6.3.5.1 INT WINAPI RF_REQUEST	26
6.3.5.2 INT WINAPI RF_SHC1102_AUTH	27
6.3.5.3 INT WINAPI RF_SHC1102_READ.....	27
6.3.5.4 INT WINAPI RF_SHC1102_WRITE.....	27
6.4 ISO14443B FUNCTION	28
6.4.1 THR1064	28
6.4.1.1 INT WINAPI RF_TYPEB_RST	28
6.4.1.2 INT WINAPI RF_THR1064_READ	28
6.4.1.3 INT WINAPI RF_THR1064_WRITE.....	28
6.4.1.4 INT WINAPI RF_THR1064_CHECK.....	28
6.4.2 AT88RF020	29
6.4.2.1 INT WINAPI RF_TYPEB_RST	29

6.4.2.2 INT WINAPI RF_ AT020_CHECK.....	29
6.4.2.3 INT WINAPI RF_ AT020_COUNT.....	29
6.4.2.4 INT WINAPI RF_ AT020_READ.....	29
6.4.2.5 INT WINAPI RF_ AT020_WRITE.....	30
6.4.2.6 INT WINAPI RF_ AT020_LOCK.....	30
6.4.2.7 INT WINAPI RF_ AT020_DESELECT	30
6.4.3 SR176SRIX4K	30
6.4.3.1 INT WINAPI RF_ST_SELECT.....	30
6.4.3.2 INT WINAPI INT_RF_SR176_READBLOCK	30
6.4.3.3 INT WINAPI INT_RF_SR176_WRITEBLOCK	31
6.4.3.4 INT WINAPI INT_RF_SR176_PROTECTBLOCK	31
6.4.3.5 INT WINAPI INT_RF_SRIX4K_GETUID.....	31
6.4.3.6 INT WINAPI INT_RF_SRIX4K_READBLOCK.....	31
6.4.3.7 INT WINAPI INT_RF_SRIX4K_WRITEBLOCK	32
6.4.3.8 INT WINAPI INT_RF_SRIX4K_PROTECTBLOCK	32
6.4.3.9 INT WINAPI RF_ST_COMPLETION.....	32
6.4.4 TYPE_B SmartCard	33
6.4.4.1 INT WINAPI RF_TYPEB_RST	33
6.4.4.2 INT WINAPI RF_COS_COMMAND	33
6.4.4.3 INT WINAPI RF_CL_DESELECT	33
6.5 ISO15693 FUNCTION.....	34
6.5.1 INT WINAPI ISO15693_INVENTORY.....	34
6.5.2 INT WINAPI ISO15693_INVENTORYS	34
6.5.3 INT WINAPI ISO15693_GET_SYSTEM_INFORMATION.....	34
6.5.4 INT WINAPI ISO15693_SELECT.....	35
6.5.5 INT WINAPI ISO15693_RESET_TO_READY	35
6.5.6 INT WINAPI ISO15693_STAY_QUIET.....	35
6.5.7 INT WINAPI ISO15693_GET_BLOCK_SECURITY	35
6.5.8 INT WINAPI ISO15693_READ.....	36
6.5.9 INT WINAPI ISO15693_WRITE.....	36
6.5.10 INT WINAPI ISO15693_LOCK_BLOCK	37
6.5.11 INT WINAPI ISO15693_WRITE_AFI.....	37
6.5.12 INT WINAPI ISO15693_LOCK_AFI	37
6.5.13 INT WINAPI ISO15693_WRITE_DSFD	38
6.5.14 INT WINAPI ISO15693_LOCK_DSFD	38
6.6 FUNCTION OF INFINEON ELECTRIC TAG	39
6.6.1 INT WINAPI SRF55VP_READ.....	39
6.6.2 INT WINAPI SRF55VP_WRITEBYTE.....	39
6.6.3 INT WINAPI SRF55VP_WRITE	39
6.6.4 INT WINAPI SRF55VP_WRITE_REREAD	40
6.7 PASS THROUGH FUNCTION	40
6.7.1 INT WIN API RF_TRANSCEIVE1	40

1. GENERAL INFORMATION



- RS232 or USB Interface
- 4.5 ~ 5.5VDC Operating
- Windows 32 Operating Systems Compatibility
- 13.56MHz RF Operating Frequency
- ISO14443A ISO1443B ISO15693 Protocols
- 150MA Working Current
- Operating Temperature Range: -20°C ~ +50°C
- Storage Temperature Range: -25°C ~ +60°C
- Dimension: 110 × 81 × 26 mm
- Weight: 100g

2. TYPES AND EXPLANATION

SL500 series readers are in accord with ISO14443A, ISO14443B and ISO15693 protocols, and are classified as following sheet

	SL500L	SL500A	SL500D	SL500F
ISO14443A	√	√		√
ISO14443B				√
ISO15693			√	√

NOTICE: The difference between SL500L and SL500A

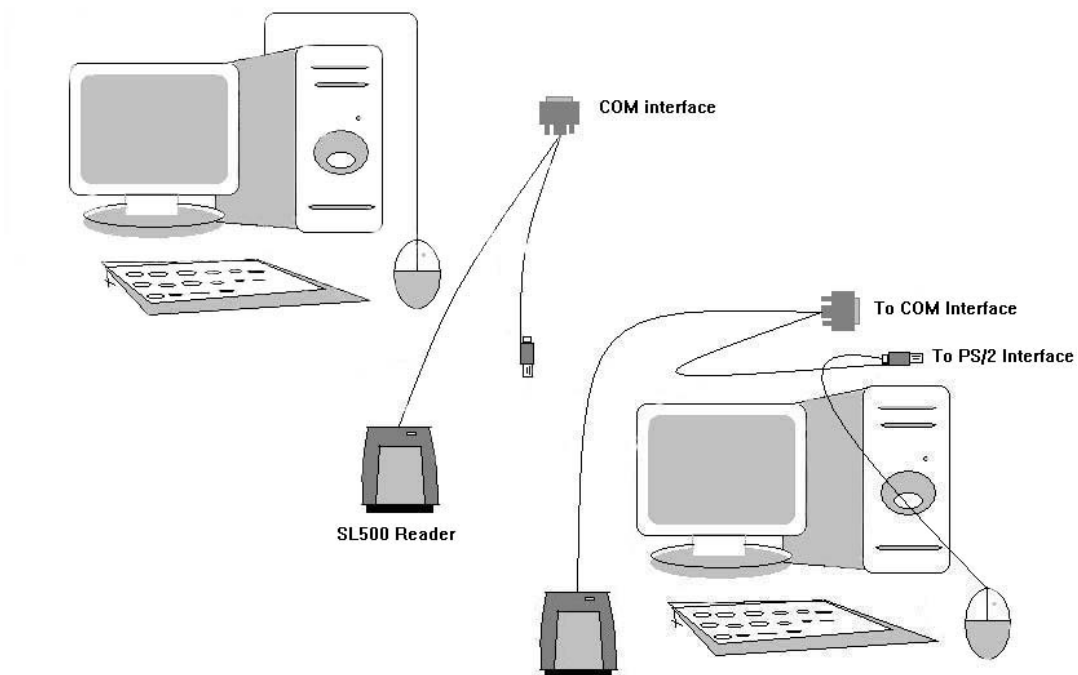
SL500L supported cards: Mifare_1k, Mifare_4k, UltraLight

SL500A supported cards: Mifare_1k, Mifare_4k, UltraLight, Mifare_ProX

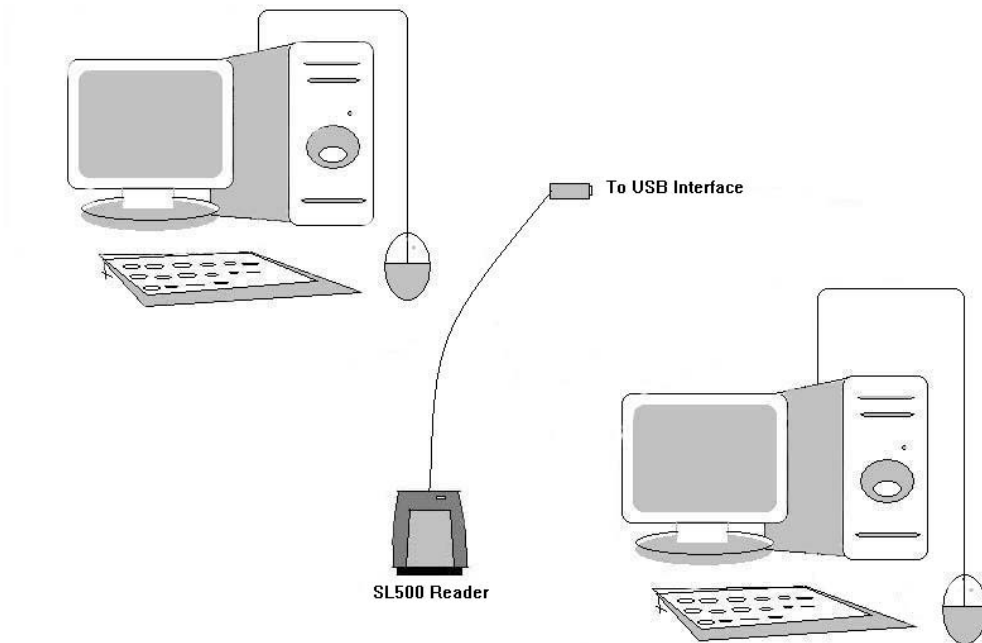
3. CONNECTING TO PC

3.1 SL500-RS232

The PS/2 port power to Reader

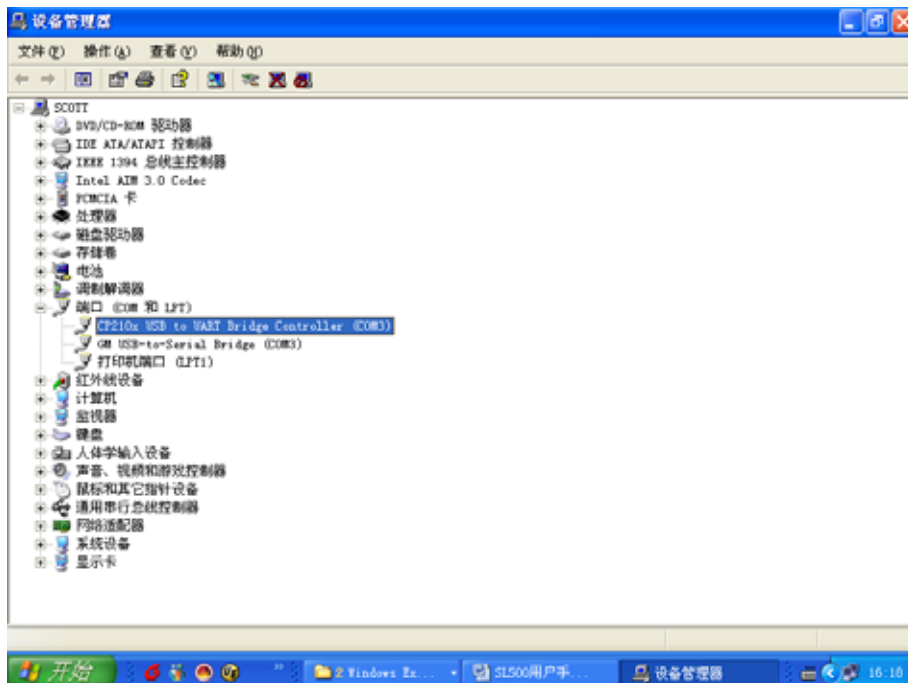


3.2 SL500-USB



SL500-USB Reader is USB bridge to COM. Connect SL500 to the USB port of PC, after installing the driver will come out a virtual COM, the operations hereafter are as same as SL500-RS232.

You can find the virtual COM number on the “Device Manager” as follows:



4. SDK

Responding InstDemo.exe to install the DEMO software and the DLL of the reader to PC, and create corresponding logo on the desk.

The default installation directory is C:\RFREADER, including the following content:

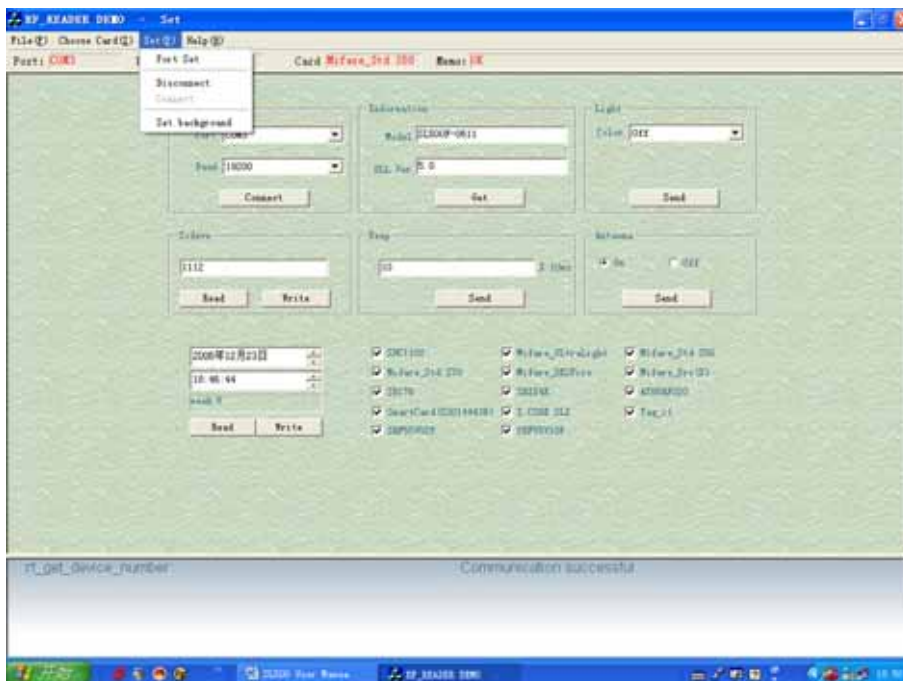
C:\RFREADER\Examples	Sample source code
C:\RFREADER\UsbDriver	USB interface driver
C:\RFREADER\ICTransfer.exe	DEMO software
C:\RFREADER\MasterRD.dll	Reader interface library with application
C:\RFREADER\MasterCOM.dll	Connect and transfer data with COM device.
C:\RFREADER\SL_Paper.dll	DEMO software background library
C:\RFREADER\RFHELP.chm	DLL explanations at chm format
C:\RFREADER\AppConfig.ini	DEMO software configuration files

5. DEMO

This software run on Win32 system, and need 1024 x 768 dpi at least

5.1 Online

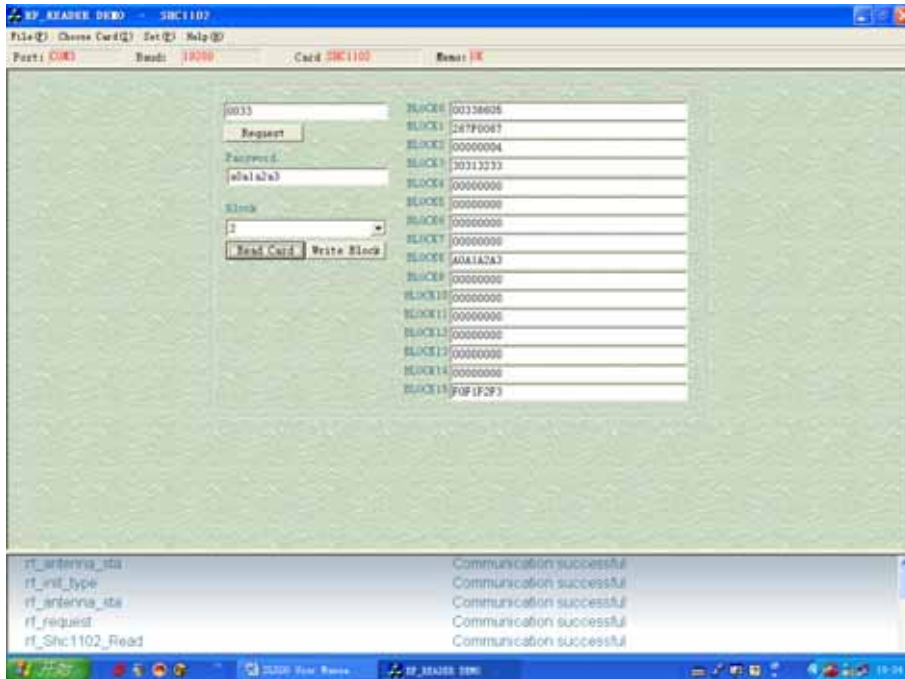
Choose the correct COM number, click [Connect] button to connect the Reader to PC. Click [Read] the product information button, you can check the specific type of the Reader and the supported cards.



5.2 SHC1102

Click [Request] button to obtain the card serial number.

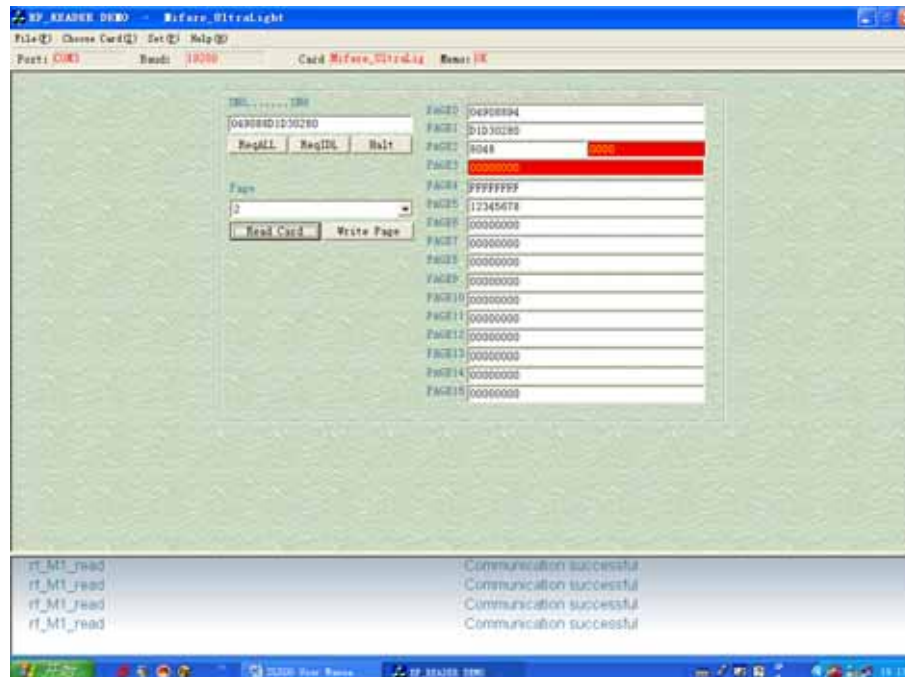
Input the correct key to read/write the card



5.3 UltraLight

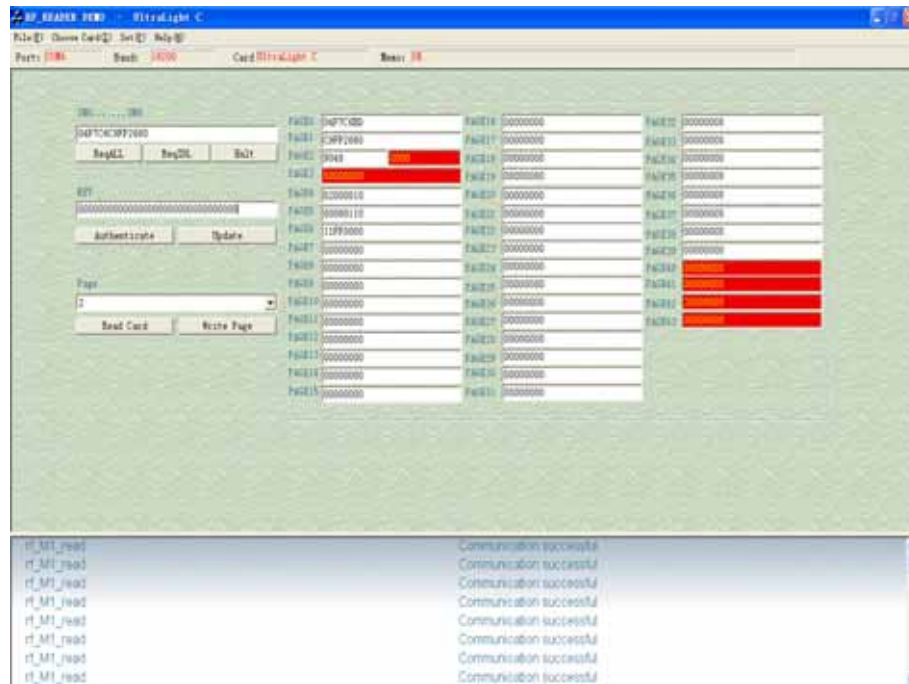
Click the [Request] button to obtain the card Serial Number.

Choose the corresponding address to read/write the card.



5.4 UltraLight C

Click the [Request] button to obtain the card Serial Number.
 Choose the corresponding address to read/write the card



5.5 Mifare_1k (STD S50)

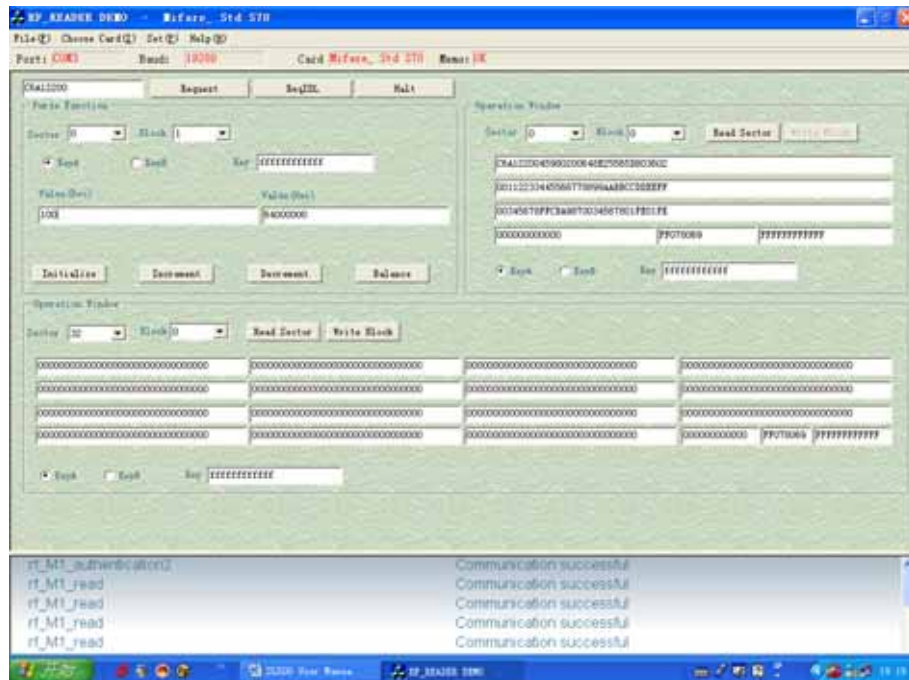
Click the [Request] button to obtain the card serial number.
 Input the correct password to read, write, increase or decrease the card.



5.6 Mifare_4k (STD S70)

Click the [Request] button to obtain the card serial number.

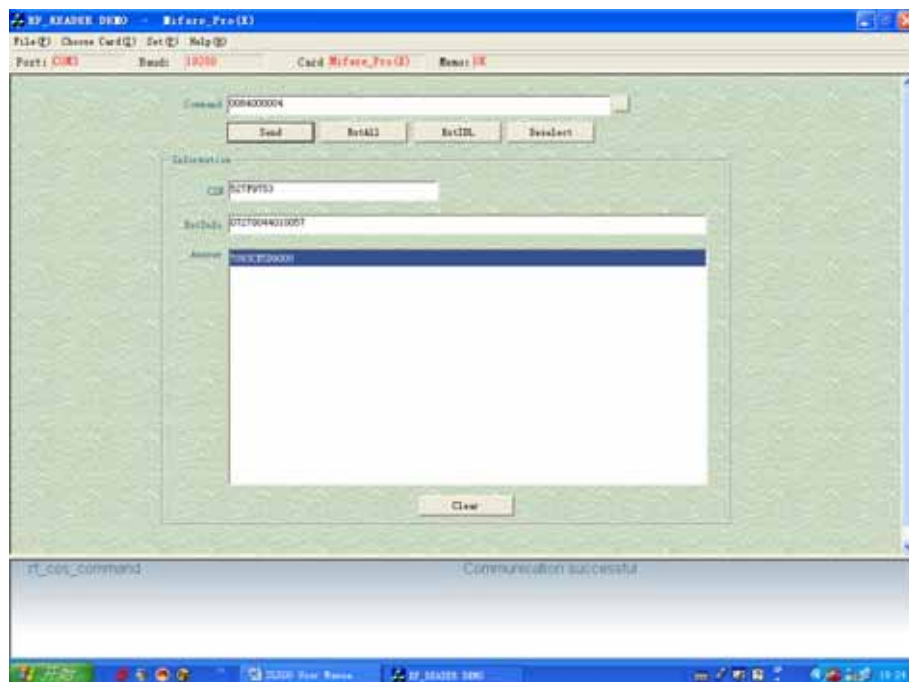
Input the correct password to read, write, increase or decrease the card.



5.7 Mifare_ProX

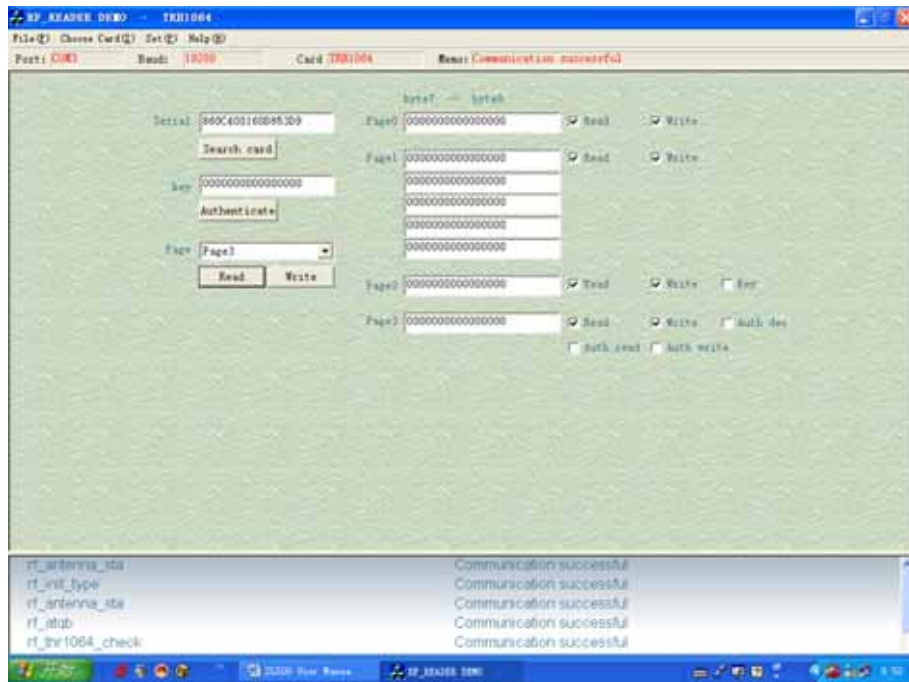
Click [Reset] button to obtain the serial number and the reset information of the card according to ISO14443-4 protocol.

Input the COS command, click [Send] button to commute data to card.



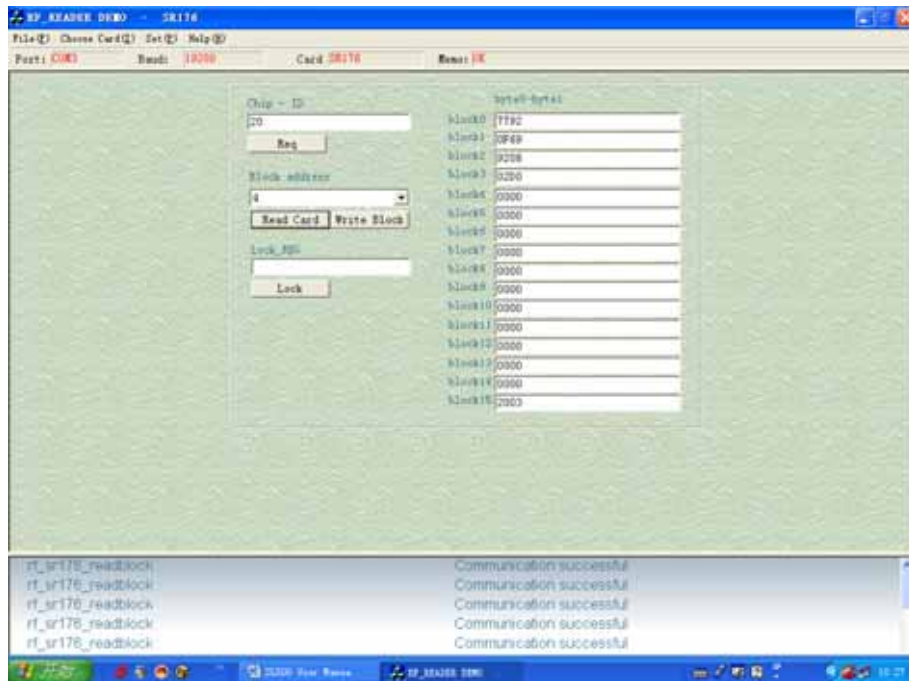
5.8 TRH1064

Click [Request] button to obtain the card serial number.
 Hereafter can read, write and validate.



5.9 SR176

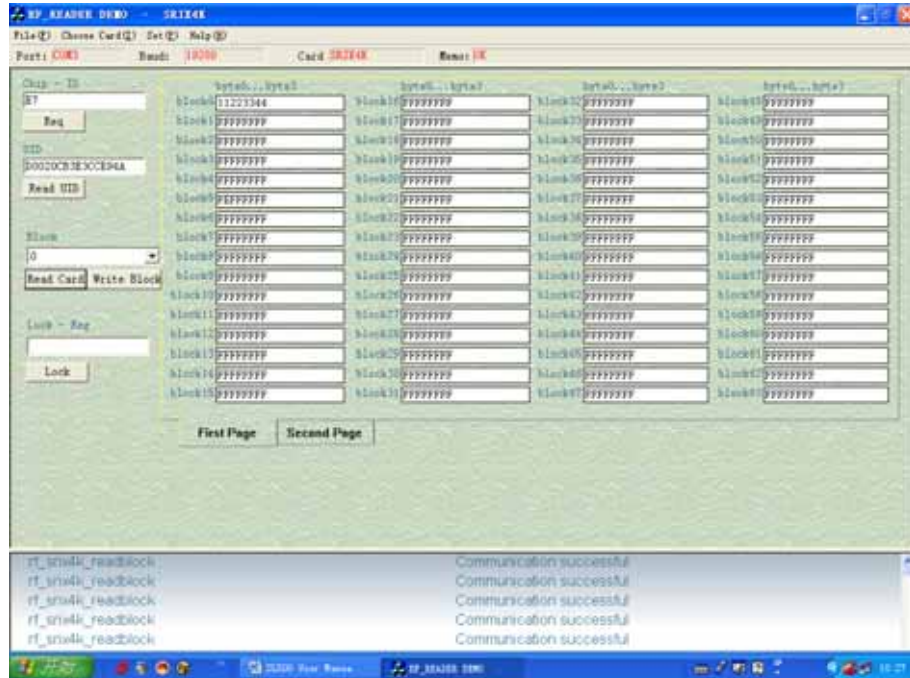
Click [Req] button to obtain the ID number of the card.
 Then you can read, write and lock blocks of the card.



5.10 SR1X4K

Click [Req] button to obtain the ID number of the card and click [Read UID] to obtain the UID of the card.

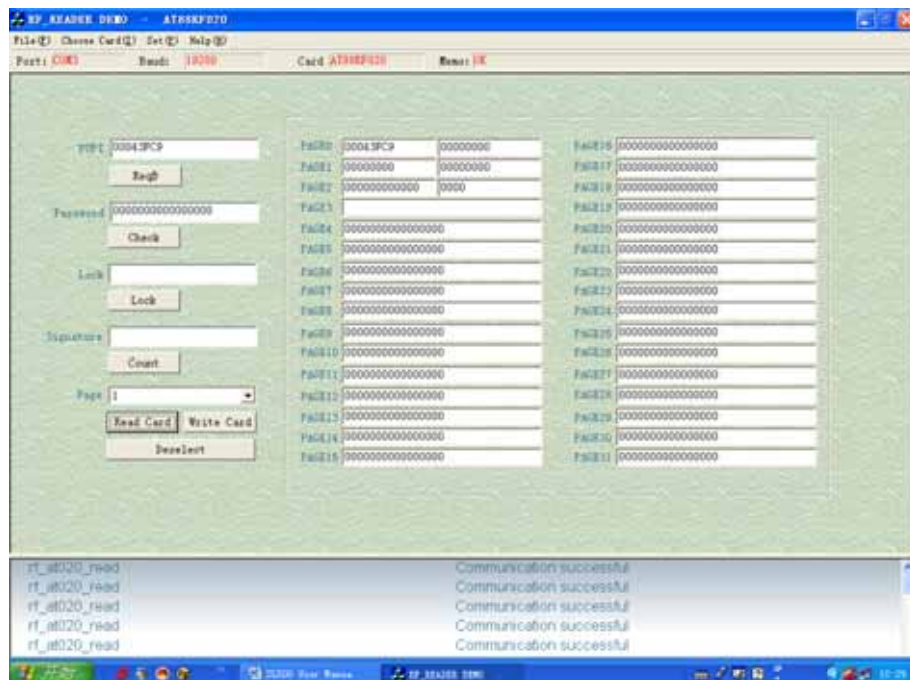
Then you can read, write and lock blocks of the card.



5.11 AT88RF020

Click [ReqB] button to obtain the serial number of the card.

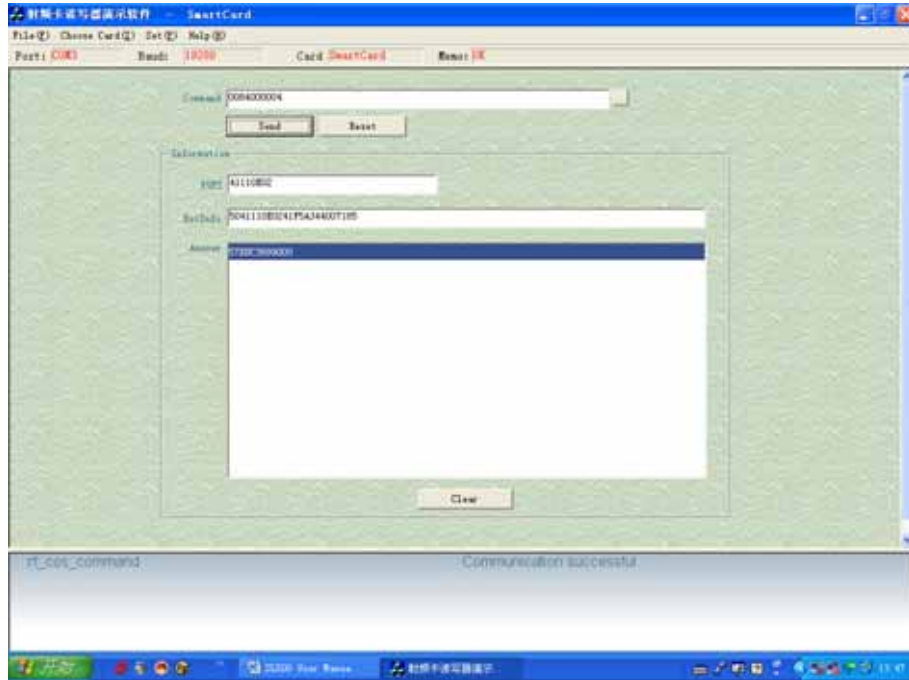
After check password, you can read, write, signature and lock blocks of the card.



5.12 ISO14443B-4 Protocol Smart Card

Click [Reset] button to obtain the serial number and the reset information of the card according to ISO14443-4 protocol.

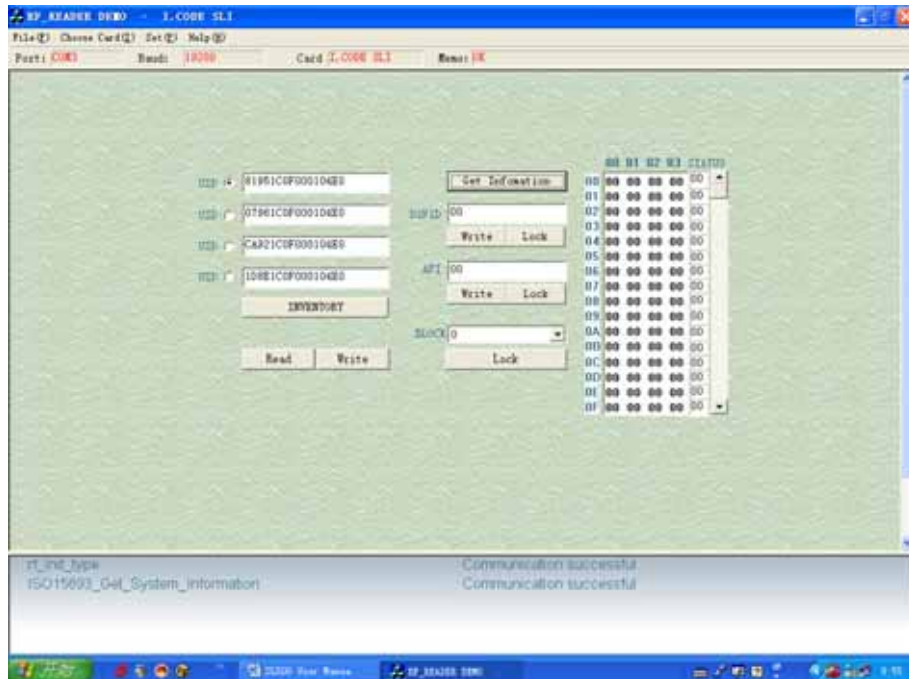
Input the COS command, click [Send] button to commute data to card.



5.13 I.CODE SLI

Click [INVENTORY] button to obtain the serial number of the card. You can operate 4 cards at most.

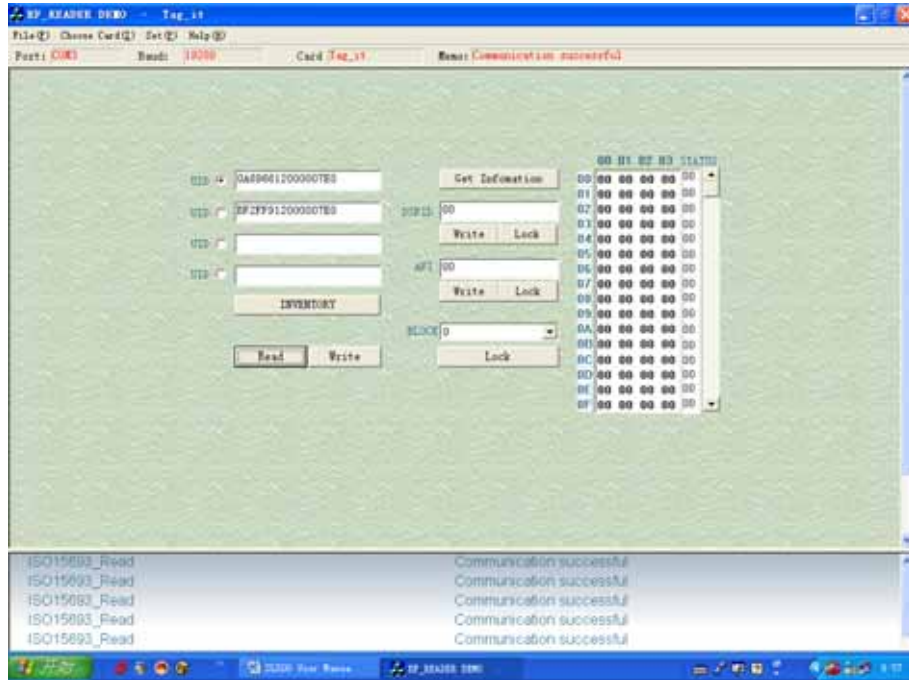
Choose certain card according to the UID to read or write.



5.14 Tag_IT

Click [INVENTORY] button to obtain the serial number of the card. You can operate 4 cards at most.

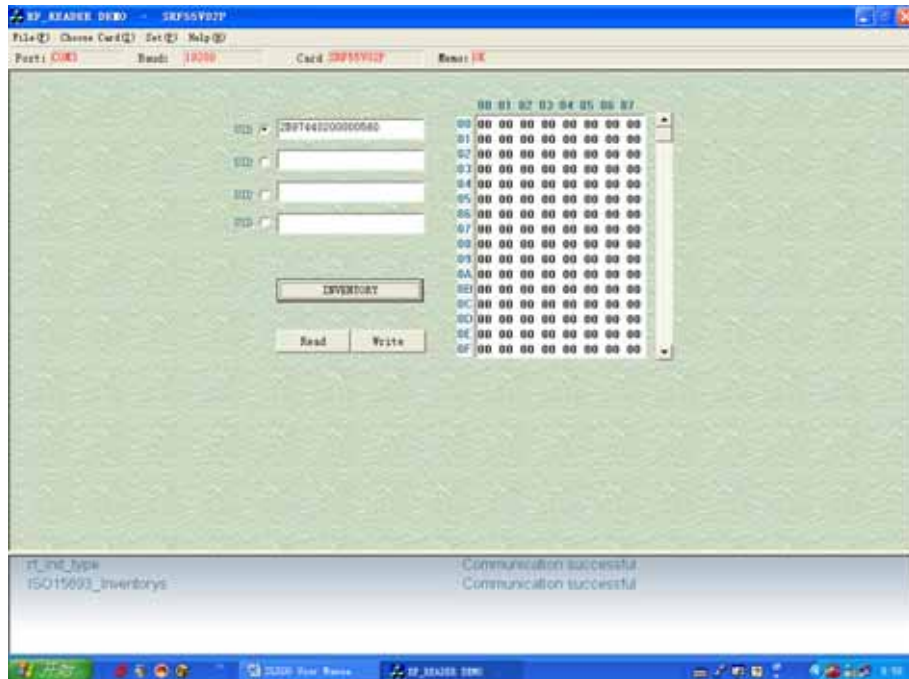
Choose certain card according to the UID to read/write.



5.15 SRF55V02P

Click [INVENTORY] button to obtain the serial number of the card. You can operate 4 cards at most.

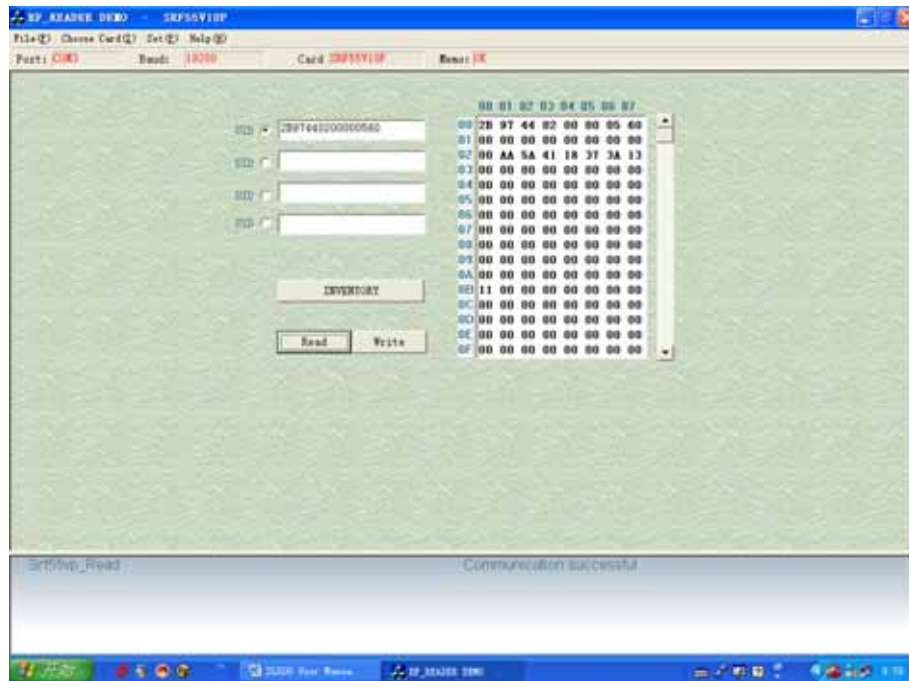
Choose certain card according to the UID to read/write.



5.16 SRF55V10P

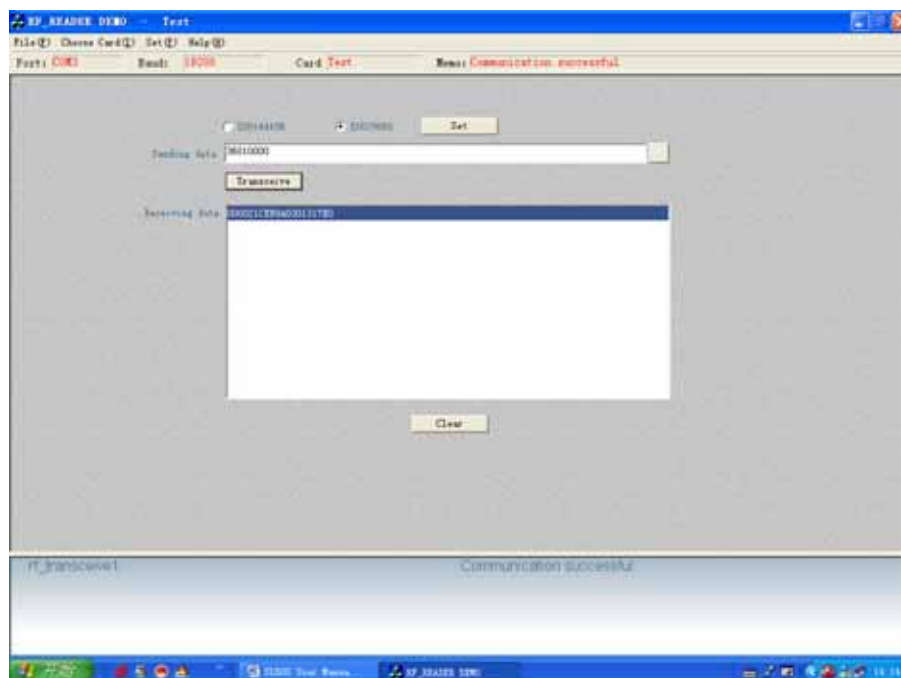
Click [INVENTORY] button to obtain the serial number of the card. You can operate 4 cards at most.

Choose certain card according to the UID to read/write.



5.17 Pass_Through

In this windows, input parameters according to ISO14443B and ISO15693 protocol, click [Transceive] button to get response data from tag. CRC bytes is auto managed by reader, it will not be contained in the stream.



6. DLL INFORMATION

All types of readers have system function and encrypt function.

Whether readers support other functions depends on their specific types.

6.1 SYSTEM FUNCTION

6.1.1 INT WINAPI LIB_VER

Function: Get DLL Version

Prototype: int WINAPI lib_ver (unsigned int *pVer)

Parameter: pVer: [OUT] DLL version

Return: return 0 if successful

6.1.2 INT WINAPI RF_INIT_COM

Function: Connect

Prototype: int WINAPI rf_init_com (int port, long baud)

Parameter: port: [IN] serial port number

baud: [IN] communication baud rate, 4800 ~ 115200 bps

Return 0 on success

6.1.3 INT WINAPI RF_CLOSEPORT

Function: Disconnect

Prototyp: int WINAPI rf_ClosePort(void)

Return 0 on success

6.1.4 INT WINAPI RF_GET_MODEL

Function: Get Device Type

Prototype: int WINAPI rf_get_model (unsigned short icdev,
unsigned char *pVersion,
unsigned char *pLen)

Parameter: icdev: [IN] Device ID

pVersion: [OUT] response information

pLen: [OUT] length of response information

Return 0 on success

6.1.5 INT WINAPI RF_INIT_DEVICE_NUMBER

Function: Designate Device ID

Prototype: int WINAPI rf_init_device_number (unsigned short icdev)

Parameter: icdev: [IN] Device ID

Return 0 on success

6.1.6 INT WINAPI RF_GET_DEVICE_NUMBER

Function: Read Device ID

Prototype: int WINAPI rf_get_device_number (unsigned short *pIcdev)

Parameter: pIcdev: [OUT] response Device ID

Return 0 on success

6.1.7 INT WINAPI RF_INIT_TYPE

Function: Set Reader contactless working mode

Prototype: int WINAPI rf_init_type(unsigned short icdev, unsigned char type)

Parameter: icdev: [IN] Device ID

type: [IN] reader working mode

Return 0 on success

Explanation: this function is not effective to the readers only support single protocol.

type = 'A': set SL500 into ISO14443A mode

type = 'B': set ISO14443B mode

type = 'r': set AT88RF020 card mode

type = '1': set ISO15693 mode

6.1.8 INT WINAPI RF_ANTENNA_STA

Function: Manage RF Transmittal

Prototype: int WINAPI rf_antenna_sta (unsigned short icdev, unsigned char model)

Parameter: icdev: [IN] Device ID

model: [IN] transmittal state

Return 0 on success

Explanation: model = 0: turn off RF transmittal

model = 1: turn on RF transmittal

6.1.9 INT WINAPI RF_LIGHT

Function: Manage LED

Prototype: int WINAPI rf_light (unsigned short icdev, unsigned char color)

Parameter: icdev: [IN] Device ID

color: [IN] 0 = off

1 = red

2 = green

3 = yellow

Return 0 on success

6.1.10 INT WINAPI RF_BEEP

Function: beep

Prototype: int WINAPI rf_beep (unsigned short icdev, unsigned char msec)

Parameter: icdev: [IN] Device ID

msec: [IN] beep time, unit 10 MSEL

Return 0 on success

6.2 DES FUNCTION

6.2.1 INT WINAPI DES_ENCRYPT

Function: DES_Encrypt

```

Prototype: int WINAPI des_encrypt ( unsigned char *pSzOut,
                                     unsigned char *pSzIn,
                                     unsigned int   inlen,
                                     unsigned char *pKey,
                                     unsigned int   keylen)
    
```

Parameter: pSzOut: [OUT] ciphertext, bytes length equal to plaintext
 pSzIn: [IN] plaintext
 inlen: [IN] length of plaintext, integer times of 8 bytes
 pKey: [IN] encrypt key
 keylen: [IN] length of key, 8 bytes for single DES, 16 bytes for triple DES

Return 0 on success

6.2.2 INT WINAPI DES_DECRYPT

Function: DES_Decrypt

```

Prototype: int WINAPI des_decrypt ( unsigned char *pSzOut,
                                     unsigned char *pSzIn,
                                     unsigned int   inlen,
                                     unsigned char *pKey,
                                     unsigned int   keylen)
    
```

Parameter: pSzOut: [OUT] plaintext, bytes length equal to ciphertext
 pSzIn: [IN] ciphertext
 inlen: [IN] length of ciphertext, integer times of 8 bytes
 pKey: [IN] encrypt key
 keylen: [IN] length of key, 8 bytes for single DES, 16 bytes for triple DES

Return 0 on success

6.3 ISO14443A FUNCTION

6.3.1 UltraLight

6.3.1.1 INT WINAPI RF_REQUEST

Function: ReqA

```

Prototype: int WINAPI rf_request ( unsigned short icdev,
                                   unsigned char  model,
                                   unsigned short *pTagType)
    
```

Parameter: icdev: [IN] Device ID
 model: [IN] REQ MODE
 pTagType: [OUT] response data, chip type code

Return 0 on success

Annotation: mode = 0x26: REQ_STD
 mode = 0x52: REQ_ALL

6.3.1.2 INT WINAPI RF_UL_SELECT

Function: Select UltraLight

Prototype: int WINAPI int rf_ul_select (unsigned short icdev,
 unsigned char *pSnr,
 unsigned char *pLen)

Parameter: icdev: [IN] Device ID
 pSnr: [OUT] response data, card unique serial number
 pLen: [OUT] length of response data

Return 0 on success

6.3.1.3 INT WINAPI RF_M1_READ

Function: MifareOne read

Prototype: int WINAPI rf_M1_read (unsigned short icdev,
 unsigned char block,
 unsigned char *pData,
 unsigned char *pLen)

Parameter: icdev: [IN] Device ID
 block: [IN] block absolute address
 pData: [OUT] response data from card
 pLen: [OUT] length of response data

Return 0 on success

Annotation: this function is also applicable for UltraLight card. Every page of UltraLight card has 4 bytes. After calling this function, return data of 4 consecutive pages.

6.3.1.4 INT WINAPI RF_UL_WRITE

Function: UltraLight Write

Prototype: int WINAPI int rf_ul_write (unsigned short icdev,
 unsigned char page,
 unsigned char *pData)

Parameter: icdev: [IN] Device ID
 page: [IN] UltraLight card page address , 0 ~ 0x0F
 pData: [IN] written data, 4 bytes

Return 0 on success

6.3.1.5 INT WINAPI INT RF_UC_AUTHENTICATION

Function: Authenticate Key for Ultralight C

Prototype: int WINAPI rf_UC_authentication(unsigned short icdev,
 unsigned char *pKey))

Parameter: icdev: [IN] Communication device identifier
 pKey: [IN] Key, 16 bytes

Return 0 on success

6.3.1.6 INT WINAPI RF_UC_CHANGEKEY

Function: Update key of Ultralight C

Prototype: int WINAPI rf_uc_changekey(unsigned short icdev, unsigned char *pKey)

Parameter: icdev: [IN] Communication device identifier

pKey: [IN] Key, 16 bytes

Return 0 on success

6.3.1.7 INT WINAPI RF_HALT

Function: TYPE_A card HALT

Prototype: int WINAPI rf_halt (unsigned short icdev)

Parameter: icdev: [IN] Communication device identifier

Return 0 on success

6.3.2 Mifare Class

6.3.2.1 INT WINAPI RF_REQUEST

Function: ReqA

Prototype: int WINAPI rf_request (unsigned short icdev,
 unsigned char model,
 unsigned short *pTagType)

Parameter: icdev: [IN] Device ID
 model: [IN] REQ MODE
 pTagType: [OUT] response data, chip type code

Return 0 on success

Annotation: mode = 0x26: REQ_STD
 mode = 0x52: REQ_ALL

6.3.2.2 INT WINAPI RF_ANTICOLL

Function: Mifare card Anticollision

Prototype: int WINAPI rf_anticoll (unsigned short icdev,
 unsigned char bcnt,
 unsigned char *pSnr,
 unsigned char *pLen)

Parameter: icdev: [IN] Device ID
 bcnt: [IN] must be 4
 pSnr: [OUT] response data from card, unique serial number
 pLen: [OUT] length of response data

Return: return 0 if successful

6.3.2.3 INT WINAPI RF_SELECT

Function: Mifare card Selectting

Prototype: int WINAPI rf_select (unsigned short icdev,
 unsigned char *pSnr,
 unsigned char snrLen,
 unsigned char *pSize)

Parameter: icdev: [IN] Device ID
 pSnr: [IN] card unique serial number
 snrLen: [IN] length of pSnr
 pSize: [OUT] response data from card, capacity code

Return 0 on success

Annotation: card will be on active estate after received this command, only one TYPE_A card on active estate at the same influence range at same time.

6.3.2.4 INT WINAPI RF_M1_AUTHENTICATION2

Function: Mifare_Std Authenticate

Prototype: int WINAPI rf_M1_authentication2 (unsigned short icdev,
 unsigned char model,
 unsigned char block,
 unsigned char *pKey)

Parameter: icdev: [IN] Device ID
 model: [IN] key validate mode
 block: [IN] block absolute address
 pKey: [IN] 6 bytes password

Return 0 on success

Annotation: model = 0x60: use KeyA

model = 0x61: use KeyB

6.3.2.5 INT WINAPI RF_M1_READ

Function: MifareOne Read

Prototype: int WINAPI rf_M1_read (unsigned short icdev,
 unsigned char block,
 unsigned char *pData,
 unsigned char *pLen)

Parameter: icdev: [IN] Device ID
 block: [IN] block absolute address
 pData: [OUT] response data from card
 pLen: [OUT] length of response data

Return 0 on success

6.3.2.6 INT WINAPI RF_M1_WRITE

Function: Mifare_Std Write

Prototype: int WINAPI rf_M1_write (unsigned short icdev,
 unsigned char block,
 unsigned char *pData)

Parameter: icdev: [IN] Device ID
 block: [IN] block absolute address
 pData: [IN] written data, 16 bytes

Return 0 on success

6.3.2.7 INT WINAPI RF_M1_INITVAL

Function: Mifare_Std card Initialize Value

Prototype: int WINAPI rf_M1_initval (unsigned short icdev,
 unsigned char block,
 long value)

Parameter: icdev: [IN] Device ID
 block: [IN] block absolute address
 pValue: [IN] initialize purse value at HEX format, low byte in former

Return 0 on success

6.3.2.8 INT WINAPI RF_M1_READVAL

Function: Mifare_Std Read Value

Prototype: int WINAPI rf_M1_readval (unsigned short icdev,
 unsigned char block,
 long *pValue)

Parameter: icdev: [IN] Device ID
 block: [IN] block absolute address
 pValue: [OUT] response value at HEX format, low byte in former

Return 0 on success

6.3.2.9 INT WINAPI RF_M1_INCREMENT

Function: Mifare purse increment

Prototype: int WINAPI rf_M1_increment (unsigned short icdev,
 unsigned char block,
 long value)

Parameter: icdev: [IN] Device ID
 block: [IN] block absolute address
 value: [IN] increase value at HEX format, low byte in former

Return 0 on success

6.3.2.10 INT WINAPI RF_M1_DECREMENT

Function: Mifare purse decrement

Prototype: int WINAPI rf_M1_decrement (unsigned short icdev,
 unsigned char block,
 long value)

Parameter: icdev: [IN] Device ID
 block: [IN] block absolute address
 value: [IN] decrease value at HEX format, low byte in former

Return 0 on success

6.3.2.11 INT WINAPI RF_M1_RESTORE

Function: Mifare_Std Restore

Prototype: int WINAPI rf_M1_restore (unsigned short icdev, unsigned char block)

Parameter: icdev: [IN] Device ID
 block: [IN] block absolute address

Return 0 on success

6.3.2.12 INT WINAPI RF_M1_TRANSFER

Function: Mifare_Std Transfer

Prototype: int WINAPI rf_M1_transfer (unsigned short icdev, unsigned char block)

Parameter: icdev: [IN] Device ID
 block: [IN] block absolute address

Annotation: mode = 0x26: REQ_STD

mode = 0x52: REQ_ALL

6.3.5.2 INT WINAPI RF_SHC1102_AUTH

Function: SHC1102 card Authenticate

Prototype: int WINAPI rf_Shc1102_Auth (unsigned short icdev, unsigned char *pPassword)

Parameter: icdev: [IN] Device ID
pPassword: [IN] 4 bytes password

Return 0 on success

6.3.5.3 INT WINAPI RF_SHC1102_READ

Function: SHC1102 card read

Prototype: int WINAPI rf_Shc1102_Read (unsigned short icdev,
unsigned char block,
unsigned char *pData,
unsigned char *pLen)

Parameter: icdev: [IN] Device ID
block: [IN] SHC1102 card block address, 0x00 ~ 0x0F
pData: [OUT] response data from card
pLen: [OUT] length of response data

Return 0 on success

6.3.5.4 INT WINAPI RF_SHC1102_WRITE

Function: SHC1102 card write

Prototype: int WINAPI rf_Shc1102_Write (unsigned short icdev,
unsigned char block,
unsigned char *pData)

Parameter: icdev: [IN] Device ID
block: [IN] SHC1102 card block address, 0x00 ~ 0x0F
pData: [IN] written data, 16 bytes

Return 0 on success

pKey: [IN] 8 bytes pass word

Return 0 on success

6.4.2 AT88RF020

6.4.2.1 INT WINAPI RF_ TYPEB_ RST

Function: REQ ISO14443B protocol card and set SLOT

Prototype: int WINAPI rf_atqb(unsigned short icdev,
 unsigned char model,
 unsigned char *pData,
 unsigned char *pMsgLg)

Parameter: icdev: [IN] Device ID
 model: [IN] REQ MODE 0 = REQB, 1 = WUPB
 pData: [OUT] response data from card
 pMsgLg: [OUT] length of response data

Return 0 on success

6.4.2.2 INT WINAPI RF_ AT020_ CHECK

Function: AT88RF020 card Authenticate

Prototype: int WINAPI rf_at020_check (unsigned short icdev, unsigned char *pKey)

Parameter: icdev: [IN] Device ID
 pKey: [IN] 8 bytes pass word

Return 0 on success

6.4.2.3 INT WINAPI RF_ AT020_ COUNT

Function: AT88RF020 card count

Prototype: int WINAPI rf_at020_count(unsigned short icdev, unsigned char *pData)

Parameter: icdev: [IN] Device ID
 pData: [IN] signature, 6 bytes

Return 0 on success

6.4.2.4 INT WINAPI RF_ AT020_ READ

Function: AT88RF020 read

Prototype: int WINAPI rf_at020_read (unsigned short icdev,
 unsigned char page,
 unsigned char *pData,
 unsigned char *pMsgLen)

Parameter: icdev: [IN] Device ID
 page: [IN] page address, 0 ~ 31
 pData: [OUT] response data from card
 pMsgLen: [OUT] length of response data

Return 0 on success

6.4.3.3 INT WINAPI INT_RF_SR176_WRITEBLOCK

Function: SR176 Write

Prototype: int WINAPI int rf_sr176_writeblock (unsigned short icdev,
 unsigned char block,
 unsigned char *pData)

Parameter: icdev: [IN] Device ID
 block: [IN] block address
 pData: [IN] written data, 2 bytes

Return 0 on success

6.4.3.4 INT WINAPI INT_RF_SR176_PROTECTBLOCK

Function: SR176 Lock

Prototype: int WINAPI int rf_sr176_protectblock (unsigned short icdev, unsigned char lockreg)

Parameter: icdev: [IN] Device ID
 lockreg: [IN] LOCKREG

Return 0 on success

Annotation: SR17 6has 16 blocks, every lockreg controls 2 blocks

lockreg	BLOCK	bit_setting	
b7	14 & 15	0:Write Enable	1:Block set as ROM
b6	12 & 13	0:Write Enable	1:Block set as ROM
b5	10 & 11	0:Write Enable	1:Block set as ROM
b4	8 & 9	0:Write Enable	1:Block set as ROM
b3	6 & 7	0:Write Enable	1:Block set as ROM
b2	4 & 5	0:Write Enable	1:Block set as ROM
b1	2 & 3	0:Write Enable	1:Block set as ROM
b0	0 & 1	0:Write Enable	1:Block set as ROM

6.4.3.5 INT WINAPI INT_RF_SRIX4K_GETUID

Function: SRIX4K Get UID

Prototype: int WINAPI int rf_srix4k_getuid (unsigned short icdev,
 unsigned char *pUid,
 unsigned char *pLen)

Parameter: icdev: [IN] Device ID
 pUid: [OUT] response data from card, UID
 pLen: [OUT] length of response data

Return 0 on success

6.4.3.6 INT WINAPI INT_RF_SRIX4K_READBLOCK

Function: SRIX4K Read

Prototype: int WINAPI int rf_srix4k_readblock (unsigned short icdev,
 unsigned char block,
 unsigned char *pData,
 unsigned char *pLen)

Parameter: icdev: [IN] Device ID
 block: [IN] block address
 pData: [OUT] response data from card
 pLen: [OUT] length of response data

Return 0 on success

6.4.3.7 INT WINAPI INT_RF_SRIX4K_WRITEBLOCK

Function: SRIX4K Write

Prototype: int WINAPI int rf_srix4k_writeblock(unsigned short icdev,
 unsigned char block,
 unsigned char *pData)

Parameter: icdev: [IN] Device ID
 block: [IN] block address
 pData: [IN] written data, 4bytes

Return 0 on success

6.4.3.8 INT WINAPI INT_RF_SRIX4K_PROTECTBLOCK

Function: SRIX4K Lock

Prototype: int WINAPI int rf_srix4k_protectblock(unsigned short icdev, unsigned char lockreg)

Parameter: icdev: [IN] Device ID
 Lockreg: [IN] LOCKREG

Return 0 on success

Annotation: 7~15 blocks of SRIX4K card can be written protect

lockreg	BLOCK	bit_setting	
b7	15	1:Write Enable	0:Block set as ROM
b6	14	1:Write Enable	0:Block set as ROM
b5	13	1:Write Enable	0:Block set as ROM
b4	12	1:Write Enable	0:Block set as ROM
b3	11	1:Write Enable	0:Block set as ROM
b2	10	1:Write Enable	0:Block set as ROM
b1	9	1:Write Enable	0:Block set as ROM
b0	7 & 8	1:Write Enable	0:Block set as ROM

6.4.3.9 INT WINAPI RF_ST_COMPLETION

Function: ST Desactivated

Prototype: int WINAPI rf_st_completion (unsigned short icdev)

Parameter: icdev: [IN] Device ID

Return 0 on success

6.4.4 TYPE_B SmartCard

6.4.4.1 INT WINAPI RF_TYPEB_RST

Function: Req ISO14443B-4 protocol Smart card and Reset

Prototype: int WINAPI rf_atqb (unsigned short icdev,
unsigned char model,
unsigned char *pData,
unsigned char *pMsgLg)

Parameter: icdev: [IN] Device ID
model: [IN] REQ MODE 0 = REQB, 1 = WUPB
pData: [OUT] response data from card
pMsgLg: [OUT] length of response data

Return 0 on success

6.4.4.2 INT WINAPI RF_COS_COMMAND

Prototype: int WINAPI rf_cos_command (unsigned short icdev,
unsigned char *pCommand,
unsigned char cmdLen,
unsigned char *pData,
unsigned char *pMsgLg)

Parameter: icdev: [IN] Device ID
pCommand: [IN] cos command
cmdLen: [IN] length of cos comman
pData: [OUT] response data from card, including SW1, SW2
pMsgLg: [OUT] length of response data

Return 0 on success

6.4.4.3 INT WINAPI RF_CL_DESELECT

Function: ISO14443B card Deselect

Prototype: int WINAPI rf_cl_deselect (unsigned short icdev)

Parameter: icdev: [IN] Device ID

Return 0 on success

6.5 ISO15693 FUNCTION

6.5.1 INT WINAPI ISO15693_INVENTORY

Function: ISO15693_Inventory (single card)

Prototype: int WINAPI ISO15693_Inventory (unsigned short icdev,
 unsigned char *pData,
 unsigned char *pLen)

Parameter: icdev: [IN] Device ID
 pData: [OUT] response data from tag, 1 byte DSFID + 8 bytes UID
 pLen: [OUT] length of response data

Return 0 on success

6.5.2 INT WINAPI ISO15693_INVENTORYS

Function: ISO15693_Inventory (several cards)

Prototype: int WINAPI ISO15693_Inventorys (unsigned short icdev,
 unsigned char *pData,
 unsigned char *pLen)

Parameter: icdev: [IN] Device ID
 pData: [OUT] response data from tag, every 9 bytes is a team, the structure of
 every team is:
 1byte DSFID + 8 bytes UID
 pLen: [OUT] length of response data

Return 0 on success

6.5.3 INT WINAPI ISO15693_GET_SYSTEM_INFORMATION

Function: ISO15693_Get_System_Information

Prototype: int WINAPI ISO15693_Get_System_Information(unsigned short icdev,
 unsigned char model,
 unsigned char *pUID,
 unsigned char *pData,
 unsigned char *pLen)

Parameter: icdev: [IN] Device ID
 model: [IN] bit0=Select_flag, bit1=Address_flag, bit2=Option_flag
 pUID: [IN] 8 bytes UID
 pData: [OUT] response data from tag
 pLen: [OUT] length of response data

Return 0 on success

Annotation: If set Select_flag, only the cards on Selected state respond this command
 If set Address_flag, only the cards that the UID are congruous will respond
 this command
 Clear Option_flag = 0

6.5.4 INT WINAPI ISO15693_SELECT

Function: ISO15693_Select

Prototype: int WINAPI ISO15693_Select (unsigned short icdev, unsigned char *pUID)

Parameter: icdev: [IN] Device ID
pUID: [IN] 8 bytes UID

Return 0 on success

6.5.5 INT WINAPI ISO15693_RESET_TO_READY

Function: ISO15693_Reset_To_Ready

Prototype: int WINAPI ISO15693_Reset_To_Ready (unsigned short icdev,
unsigned char model,
unsigned char *pUID)Parameter: icdev: [IN] Device ID
model: [IN] bit0=Select_flag, bit1=Address_flag, bit2=Option_flag
pUID: [IN] 8 bytes UID

Return 0 on success

Annotation: If set Select_flag, only the cards on Selected state respond this command
If set Address_flag, only the cards that the UID are congruous will respond
this command
Clear Option_flag = 0**6.5.6 INT WINAPI ISO15693_STAY_QUIET**

Function: ISO15693_Stay_Quiet

Prototype: int WINAPI ISO15693_Stay_Quiet (unsigned short icdev, unsigned char *pUID)

Parameter: icdev: [IN] Device ID
pUID: [IN] 8 bytes UID

Return 0 on success

6.5.7 INT WINAPI ISO15693_GET_BLOCK_SECURITY

Function: ISO15693_Get_Block_Security

Prototype: int WINAPI ISO15693_Get_Block_Security (unsigned short icdev,
unsigned char model,
unsigned char *pUID,
unsigned char block,
unsigned char number,
unsigned char *pData,
unsigned char *pLen)Parameter: icdev: [IN] Device ID
model: [IN] bit0=Select_flag, bit1=Address_flag, bit2=Option_flag
pUID: [IN] 8 bytes UID
block: [IN] block address
number: [IN] the number of block to be read, < 0x40
pData: [OUT] response data from tag
pLen: [OUT] length of response data

Return 0 on success

Annotation: If set Select_flag, only the cards on Selected state respond this command
 If set Address_flag, only the cards that the UID are congruous will respond this command
 Clear Option_flag = 0

6.5.8 INT WINAPI ISO15693_READ

Function: ISO15693_Read

```

Prototype: int WINAPI ISO15693_Read ( unsigned short  icdev,
                                     unsigned char   model,
                                     unsigned char   *pUID,
                                     unsigned char   block,
                                     unsigned char   number,
                                     unsigned char   *pData,
                                     unsigned char   *pLen);
  
```

Parameter: icdev: [IN] Device ID
 model: [IN] bit0=Select_flag, bit1=Address_flag, bit2=Option_flag
 pUID: [IN] 8 bytes UID
 block: [IN] block address
 number: [IN] the number of block to be read, < 0x40
 pData: [OUT] response data from tag
 pLen: [OUT] length of response data

Return 0 on success

Annotation: If set Select_flag, only the cards on Selected state respond this command
 If set Address_flag, only the cards that the UID are congruous will respond this command
 Clear Option_flag = 0

6.5.9 INT WINAPI ISO15693_WRITE

Function: ISO15693_Write

```

Prototype: int WINAPI ISO15693_Write ( unsigned short  icdev,
                                       unsigned char   model,
                                       unsigned char   *pUID,
                                       unsigned char   block,
                                       unsigned char   *pData)
  
```

Parameter: icdev: [IN] Device ID
 model: [IN] bit0=Select_flag, bit1=Address_flag, bit2=Option_flag
 pUID: [IN] 8 bytes UID
 block: [IN] block address
 pData: [IN] written data, 4 bytes

Return 0 on success

Explanation: If set Select_flag, only the cards on Selected state respond this command
 If set Address_flag, only the cards that the UID are congruous will respond this command

If write TI card, set Option_flag,
If write I.CODE SLI card, clear Option_flag

6.5.10 INT WINAPI ISO15693_LOCK_BLOCK

Function: ISO15693_Lock_Block

Prototype: int WINAPI ISO15693_Lock_Block (unsigned short icdev,
unsigned char model,
unsigned char *pUID,
unsigned char block)

Parameter: icdev: [IN] Device ID
model: [IN] bit0=Select_flag, bit1=Address_flag, bit2=Option_flag
pUID: [IN] 8 bytes UID
block: [IN] block address

Return 0 on success

Annotation: If set Select_flag, only the cards on Selected state respond this command
If set Address_flag, only the cards that the UID are congruous will respond this command
If write TI card, set Option_flag,
If write I.CODE SLI card, clear Option_flag

6.5.11 INT WINAPI ISO15693_WRITE_AFI

Function: ISO15693_Write_AFI

Prototype: int WINAPI ISO15693_Write_AFI (unsigned short icdev,
unsigned char model,
unsigned char *pUID,
unsigned char AFI)

Parameter: icdev: [IN] Device ID
model: [IN] bit0=Select_flag, bit1=Address_flag, bit2=Option_flag
pUID: [IN] 8 bytes UID
AFI: [IN] AFI to be written

Return 0 on success

Annotation: If set Select_flag, only the cards on Selected state respond this command
If set Address_flag, only the cards that the UID are congruous will respond this command
If write TI card, set Option_flag,
If write I.CODE SLI card, clear Option_flag

6.5.12 INT WINAPI ISO15693_LOCK_AFI

Function: ISO15693_Lock_AFI

Prototype: int WINAPI ISO15693_Lock_AFI (unsigned short icdev,
unsigned char model,
unsigned char *pUID)

Parameter: icdev: [IN] Device ID
model: [IN] bit0=Select_flag, bit1=Address_flag, bit2=Option_flag

pUID: [IN] 8 bytes UID

Return 0 on success

Annotation: If set Select_flag, only the cards on Selected state respond this command
 If set Address_flag, only the cards that the UID are congruous will respond this command
 If write TI card, set Option_flag,
 If write I.CODE SLI card, clear Option_flag

6.5.13 INT WINAPI ISO15693_WRITE_DSFD

Function: ISO15693_Write_DSFD

Prototype: int WINAPI ISO15693_Write_DSFD (unsigned short icdev,
 unsigned char model,
 unsigned char *UID,
 unsigned char DSFD)

Parameter: icdev: [IN] Device ID
 model: [IN] bit0=Select_flag, bit1=Address_flag, bit2=Option_flag
 pUID: [IN] 8 bytes UID
 DSFD: [IN] DSFD to be written

Return 0 on success

Annotation: If set Select_flag, only the cards on Selected state respond this command
 If set Address_flag, only the cards that the UID are congruous will respond this command
 If write TI card, set Option_flag,
 If write I.CODE SLI card, clear Option_flag

6.5.14 INT WINAPI ISO15693_LOCK_DSFD

Function: ISO15693_Lock_DSFD

Prototype: int WINAPI ISO15693_Lock_DSFD (unsigned short icdev,
 unsigned char model,
 unsigned char *pUID)

Parameter: icdev: [IN] Device ID
 model: [IN] bit0=Select_flag, bit1=Address_flag, bit2=Option_flag
 pUID: [IN] 8 bytes UID

Return 0 on success

Annotation: If set Select_flag, only the cards on Selected state respond this command
 If set Address_flag, only the cards that the UID are congruous will respond this command
 If write TI card, set Option_flag,
 If write I.CODE SLI card, clear Option_flag

6.6 Function of Infineon Electric Tag

6.6.1 INT WINAPI SRF55VP_READ

Function: SRF55XXP Read a PAGE

Prototype: int WINAPI Srf55vp_Read (unsigned short icdev,
 unsigned char *pUID,
 unsigned char page,
 unsigned char *pData,
 unsigned char *pLen)

Parameter: icdev: [IN] Device ID
 pUID: [IN] 8 bytes UID
 page: [IN] address
 pData: [OUT] response data from tag
 pLen: [OUT] length of response data

Return 0 on success

6.6.2 INT WINAPI SRF55VP_WRITEBYTE

Function: SRF55XXP Write 1BYTE

Prototype: int WINAPI Srf55vp_WriteByte (unsigned short icdev,
 unsigned char *pUID,
 unsigned char page,
 unsigned char byteaddr,
 unsigned char data)

Parameter: icdev: [IN] Device ID
 pUID: [IN] 8 bytes UID
 page: [IN] address
 byteaddr: [IN] write the bytes to excursion address of the PAGE, 0 ~ 8
 data: [IN] written data

Return 0 on success

6.6.3 INT WINAPI SRF55VP_WRITE

Function: SRF55XXP Write a page

Prototype: int WINAPI Srf55vp_Write (unsigned short icdev,
 unsigned char *pUID,
 unsigned char page,
 unsigned char *pData)

Parameter: icdev: [IN] Device ID
 pUID: [IN] 8 bytes UID
 page: [IN] address
 pData: [IN] written data, 8 bytes

Return 0 on success

6.6.4 INT WINAPI SRF55VP_WRITE_REREAD

Function: SRF55XXP write PAGE and Return to the real data of this PAGE

Prototype: int WINAPI Srf55vp_Write_Reread(unsigned short icdev,
 unsigned char *pUID,
 unsigned char page,
 unsigned char *pWdata,
 unsigned char *pRdata,
 unsigned char *pLen)

Parameter: icdev: [IN] Device ID
 pUID: [IN] 8 bytes UID
 page: [IN] address
 pWdata: [IN] written data, 8bytes
 pRdata: [OUT] response data from tag
 pLen: [OUT] length of response data

Return 0 on success

6.7 PASS THROUGH FUNCTION

6.7.1 INT WIN API RF_TRANSCEIVE1

Function: Send parameters to Tag and receive response data

Prototype: int WINAPI rf_transceive1(unsigned short icdev,
 unsigned char *pTxData,
 unsigned char sendLen,
 unsigned char *pRxData,
 unsigned char *pMsgLg)

Parameter: icdev: [IN] Communication device identifier
 pTxData: [IN] parameter sent to tag, without CRC bytes
 CRC bytes is auto managed by reader
 sendLen: [IN] length of parameter
 pRxData: [OUT] response data from tag
 pMsgLg: [OUT] length of response data

Return 0 on success