



a50 INSPECTOR

Designed for the pro, save and export thermal and digital images with easy report writing software.

a30 DETECTOR

Designed for on the spot routine maintenance inspections.

First upgradeable camera *after purchase*. Maximize scalability by upgrading your camera with up to 15 configurations - *at any time!*

First *user* upgradeable camera. Maximize value by easily upgrading your a30 Detector to a a50 Inspector - *in the field!*

First extended warranty plan to *include* annual recalibration, inspection and firmware upgrades. Maximize performance and *increase the life of your Heat Spy!* (Excludes Battery and SD Card)

FEATURES

Upgrade both models with a High Temperature option, Wide Angle Lens and / or Telephoto Lens - *at any time!*

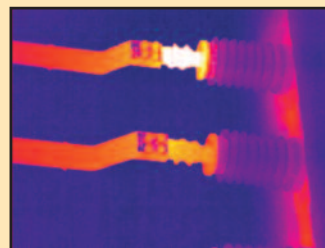
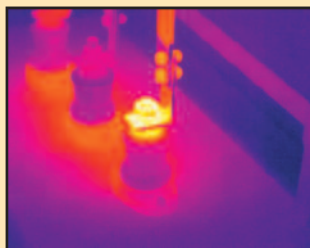
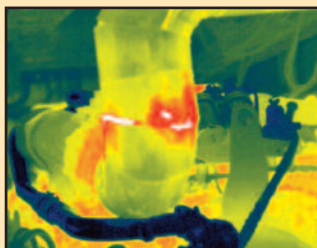
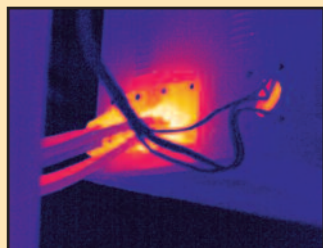
"a" speed at 9 Hertz captures clear, sharp images!

Camera acclimates quickly. Sudden ambient temperature changes won't slow you down!

Every Pixel is individually calibrated!

"Double Vision" provides **simultaneous capture** of both a Thermal and Digital picture, and can include up to a 45 second voice recording. (z50 Series only)

Hands-free flashlight (optional) screws into camera to brighten dark areas for clear digital pictures. Operates on it's own internal battery, enabling longer camera battery life.



Find problems quickly, easily, and safely with the Wahl Heat Spy.

Heat Spy® is a registered trademark of Wahl Instruments, Inc.

www.wahlheatspy.com

Specifications subject to change without notice

Digital version of catalog may differ from printed version.

Palmer Wahl • 234 Old Weaverville Road • Asheville • North Carolina • 28804
sales@palmerwahl.com • Phone: (800) 421-2853 • FAX: (828) 658-0728

PW1280a
October 2011 Rev C

APPLICATIONS
for many Industries

Aerospace
Automotive
Asphalt & Roofing
Breweries
Beverage Processing
Canning
Chemical
Coal & Mineral Mining
Condition Monitoring
Confectionery
Cosmetics
Dairy Processing
Electrical
Energy Audits
Facilities Management
Fire Fighting
Food Processing
Food Service
Glass
Government
Home Inspection
HVAC & Irrigation
Meat Processing
Mechanical
Military
Natural Gas
Oil & Petroleum
Petrochemical
Pharmaceutical
Pipe, Valve & Fitting
Plumbing
Police Search/Rescue
Poultry Processing
Power Generation
Pulp & Paper
Research & Development
Plastics
Rubber
Sanitary Processing
Semiconductor
Steel & Iron
Telecommunications
Test & Measurement
Verification
Water & Wastewater
Weatherization

and more!



IP54

Specifications	a30 Series Detector	a50 Series Inspector
UPGRADE Model	Upgrade to a50 Inspector - in the Field!	Full Feature Series
Measurement Range	-4° to 356°F (-20° to 180°C)	
UPGRADE to High Temperature	212° to 1112°F (100° to 600°C) (User Upgradeable in the Field)	
Temperature Accuracy	Greater of ± 2% of reading or ± 2°C. Instrument is not calibrated below -10°C.	
Temperature Scale	User Selectable °C, °F, and K	
Number of Measurement Spots	1 Hot Seeking, 1 Cold Seeking, 2 Adjustable	
Field of View	17.5° x 13°	
Detector Resolution	160 X 120	
Spectral Range	8-14µm	
Thermal Sensitivity	0.1°C @ 30°C	
LCD Display	High Resolution 3.5" Color LCD Screen, 640 x 480	
IR Digital Zoom	X 2	
Frame Rate	"a" models - 9Hz* (no export licensing fee)	
Display Color Palettes	4 Color Palettes: Ironbow; Negative Grayscale; Rainbow Blue-Red; High Contrast Blue-Yellow (Additional Palettes with Upgrade)	11 Color Palettes: Ironbow; Negative Grayscale; Positive Grayscale; Amber; Hot Metal; Cool Metal; Rainbow Green-Red; Rainbow Blue-Red; Rainbow Black-White; High Contrast Blue-Yellow; and High Contrast Violet-White
Image Adjustment	Auto Ranging / Manual Level and Span / Adjustable Display Brightness Control	
Languages	11 Languages: English; Spanish; French; German; Italian; Portuguese; Korean; Japanese; Russian; Simplified Chinese; and Traditional Chinese	
Laser Pointer	Class 2 < 1mW / 635nm, Red	
Auto Correction	Auto Correction of Microbolometer with Adjustable Time Interval or Push Button Manual	
Measurement Mode	Spots, Delta T, High Temp Alarm (Audible/Visible) (Additional functions with Upgrade)	Spots, Areas, Lines, Isotherms, Delta T, Alarms (Multiple Audible/Visible)
Number of Measurement Areas	(Available with Upgrade)	Up to 3 Movable & Sizeable Areas (Max, Min & Avg)
Emissivity Correction	Adjustable from 0.01 to 1.00 (Built-in Emissivity Table with Upgrade)	Adjustable from 0.01 to 1.00 with Built-in Emissivity Table
T Reflect	Manual Adjustment	
T Correct	(Available with Upgrade)	Manual Adjustment
Visible Light Camera	(Available with Upgrade)	1.3 Megapixel CMOS Sensor
Thermal/Visible Light Image	(Available with Upgrade)	Toggle between Thermal and Visible Light
Alarm	High Temperature Audible and Visible Alarm (Additional functions with Upgrade)	High Temperature Audible and Visible Alarm Isotherm Visible Alarm
UPGRADE Optics	Wide Angle (35° x 26° FOV), and/or Telephoto (8.75° x 6.5° FOV) (Factory Upgradeable options)	
Report Analysis Software	(Available with Upgrade)	Yes
Image Storage	(Available with Upgrade)	2GB SD / Time Stamped
Freeze Frame/Save Image	Freeze Frame only (Additional functions with Upgrade)	Freeze Frame and Save Image, Thermal and/or Visible to SD Card
Storage Mode	(Available with Upgrade)	Manual Single Image Save or Programmable Auto Save to SD Card
Voice Annotation	(Available with Upgrade)	Maximum 45s per image
File Format (Thermal)	(Available with Upgrade)	JPEG plus Temperature in 14 bit data
File Format / Size (Visible)	(Available with Upgrade)	JPEG / 60K (Typical value)
Video Output	User Selectable PAL and NTSC	
Dimensions/Weight w/o battery	Width: 4.5 in. (115mm) x Length: 5.9 in. (150mm) x Height: 9 in. (230mm) / 1.65 lbs (0.75 Kg)	
Power / Operating Time	1 Rechargeable Lithium Ion Battery / 2 Batteries provided, approx. 3 hours operation per battery	
Charging System	External AC Battery Charger included; In Camera Charging with optional AC/DC Battery Charger	
Ambient Operating Temperature	5° to 122°F (-15° to 50°C)	
Storage Temperature	-4° to 140°F (-20° to 60°C)	
Humidity/IP Rating	≤ 90% non-condensing / IP54	
Included Accessories	Carrying Case; Wrist Strap; Lens Cap; 2 Rechargeable Lithium Ion Batteries; External AC Battery Charger; Video Out Cable; Report/Analysis Software; SD Card & Reader; User Manual; Spy-Care(30 Series upgrade)	
Options	NIST Traceable Certificate of Conformance; Extended Warranty; Auxiliary Charging Kit with: 12V DC Car Charger, AC/DC Power Supply/Charger and International Plugs	

Heat Spy® is a registered trademark of Wahl Instruments, Inc.

Specifications subject to change without notice

www.wahlheatspy.com

PW1280a
October 2011 Rev C

Palmer Wahl • 234 Old Weaverville Road • Asheville • North Carolina • 28804
sales@palmerwahl.com • Phone: (800) 421-2853 • FAX: (828) 658-0728