

Installation and User's Manual

True Global Tracking and Tracing System

GTTS-3000

Version 1.2 November 2012



PREFACE

The information in this Installation and User's Guide is subject to change in order to improve reliability, design or function without prior notice.

In no event GTTSystems B.V. will be liable for technical or editorial errors or omissions herein.

Nor for incidental, special or consequential damages from the furnishing, performance or use of this Installation and User's Guide.

WARNINGS AND NOTICES

Read this installation and User's Manual before unpacking and installing the GTTS-3000.

There are no user serviceable parts inside. Do not open the GTTS-3000 under any circumstances. If the optional internal backup battery shall be replaced, contact your dealer.

If GTTS-3000 systems were ordered with (optional) mounting magnets, the magnets are in factory mounted to reduce risk of injury.

If magnets are mounted, a warning label will be present inside the box or crate and/or on the mounting peg of the GTTS-3000

Warning Label:



**Warning strong
magnetic field**

Caution: The magnets are very strong. The 4 magnets have a total holding force of 1080 N (~108 Kg)

Approvals:

CE / EMC EN 60945 (2002), chapter 9
EN 60945 (2002), chapter 10

Phenomenon	Basic Standard	Band
Conducted emission test with a LISN	EN 55016-2-1 (2009) + A1 (2011)	10kHz - 30 MHz
Radiated emission of Magnetic Fields up to 30 MHz	EN 55016-2-3 (2010) + A1 (2010)	150 kHz - 30 MHz
Radiated emission up to 1 GHz (FAC) (Pre test)	EN 55016-2-3 (2010) + A1 (2010)	30 MHz - 1000 MHz
Radiated emission up to 1 GHz (SAC/OATS) (final test)	EN 55016-2-3 (2010) + A1 (2010)	30 MHz - 1000 MHz
Radiated emission up to 1 GHz (SAC)	EN 55016-2-3 (2010) + A1 (2010)	30 MHz - 1000 MHz
Radiated emission up to 1 GHz (FAC)	EN 55016-2-3 (2010) + A1 (2010)	1 - 2 GHz
ESD	EN 6100-4-2 (2009)	-
Radiated Immunity	EN 6100-4-3 (2006) + A1 (2008) + A2 (2010)	80 MHz - 2000 MHz
EFT	EN 6100-4-4 (2004) + A1 (2010)	-
Conducted Immunity	EN 6100-4-6 (2009)	150 kHz 80 MHz
Power Supply Failure	EN 6100-4-11 (2004)	-

Iridium Approved (#) Pending

IP67 Ingress Protection Test (Pending)

Table of Content

1 INTRODUCTION	5
1.1 GENERAL INFORMATION.....	5
1.2 SYSTEM DESCRIPTION	5
2 INSTALLATION.....	7
2.1 UNPACKING	7
2.2 ACTIVATION IN THE IRIIDIUM NETWORK.....	7
2.3 INSTALLATION GENERAL READ THIS FIRST	7
2.3.1 INSTALLATION WITH MAGNET MOUNTING.....	8
2.3.2 INSTALLATION ON RAILING OR TUBE	9
2.3.3 INSTALLATION WITH SCREW MOUNTING	10
2.4 ELECTRICAL INSTALLATION.....	11
2.4.1 ELECTRICAL INSTALLATION USING THE BIC BOX	12
3 CONFIGURATION	13
3.1 AWS GENERIC PROTOCOL	13
3.2 CONFIGURATION DAT-01	13
3.3 CONFIGURATION AUT-01	13
4 SPECIFICATIONS	14

1 Introduction

1.1 General information

The GTTS-3000 is an Iridium Short Burst Data Communication System that was especially designed for the maritime environment.

It enables users to have a communication line and/or track and trace vessels, barges or other assets or equipment. It uses the cost effective Iridium Short Burst Data (SBD) for communication.

The Iridium network is the only network commercially available that offers true global coverage.

The GTTS-3000 was developed in such a way that it can fulfil most of the customer needs without modifications, add-ons or special software versions.

It's ruggedized all weather proof housing and stainless steel mounting hardware was especially designed to survive under the most extreme conditions.

It finds applications in maritime vertical markets like Electronic Charts Support, M2M applications, Shore Support etc.

1.2 System description

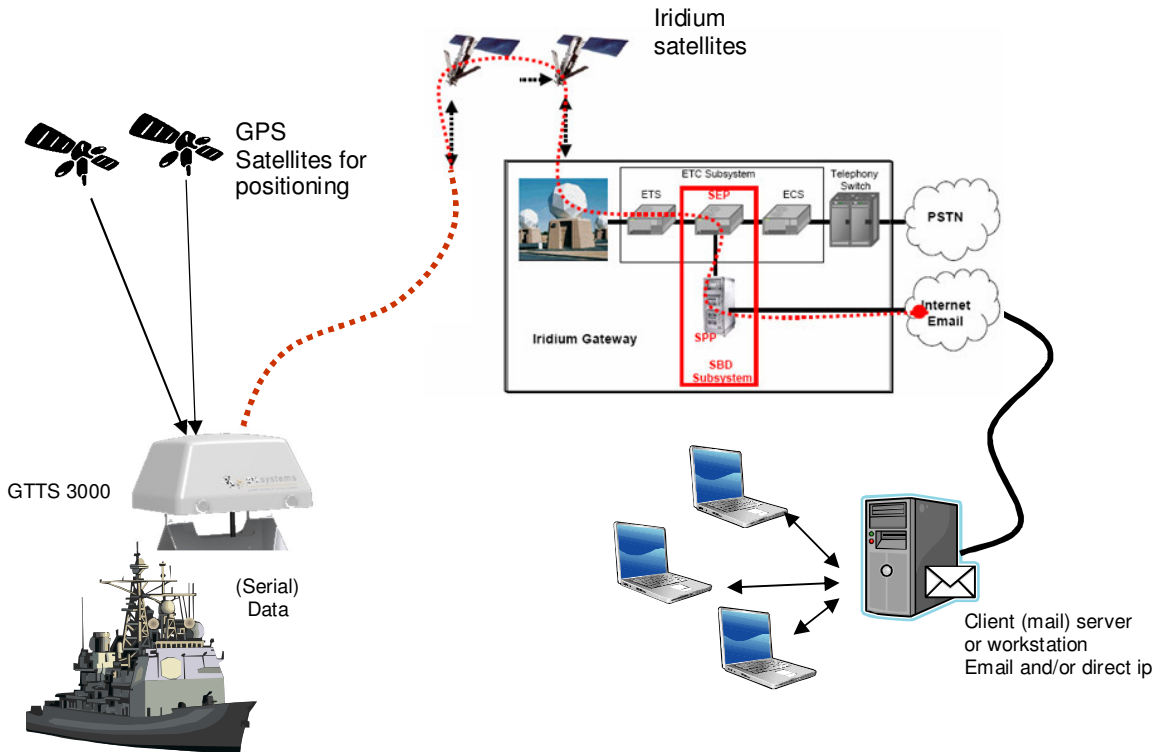


Figure 1. System description

An installed GTTS-3000, running the generic AWS protocol that uses the messagepack format (see www.msgpack.org), will retrieve the GPS data at preset time intervals. The position is then send through the Iridium satellite constellation to the Iridium Gateway. In the Gateway the data is processed and send to a pre-configured IP-address and/or E-mail address. Depending on the end-user's application, it is often desired to use geographical maps to display the position along with other information. An example of a GTTS-3000 series on a GEO map can be found in figure 2 below.

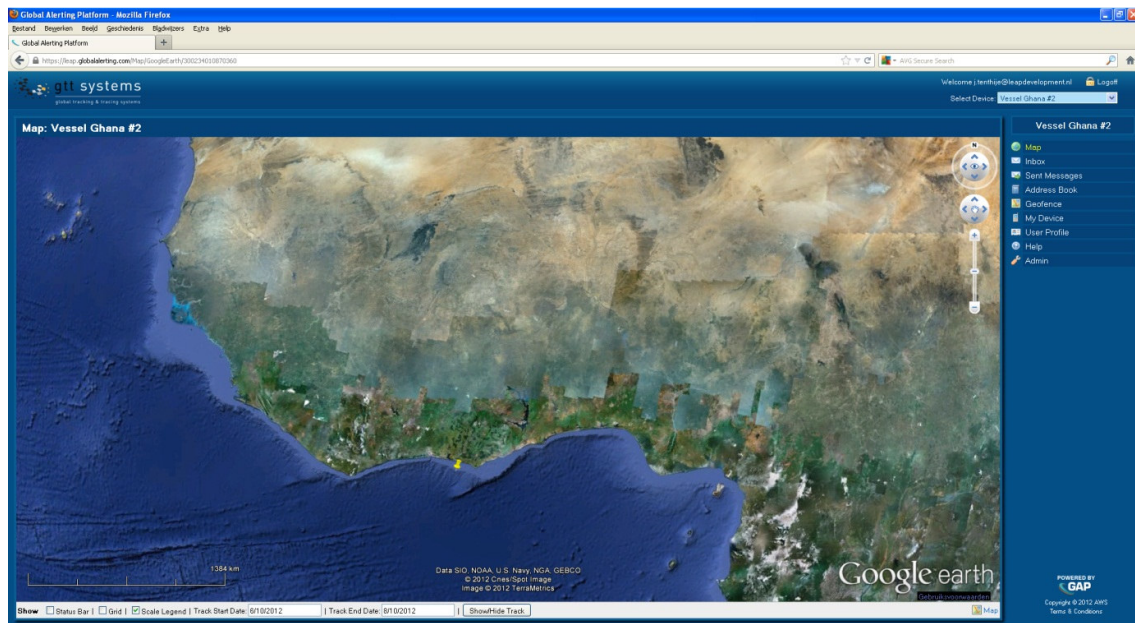


Figure 2. GTTS-3000 series on AWS Global Alerting Platform

All the dealers of the GTTS-3000 series Iridium Short Burst Data Communication System have their own GEO services, or can provide it. For the dealer list please visit <http://www.gtts.eu/dealers.php>

2 Installation

2.1 Unpacking

The GTTS-3000 is packed in a carton box. Unpacking of the GTTS-3000, especially if it is provided with magnets, should be done on location prior to installation.

GTTSsystems uses the unique IMEI number of the embedded Iridium SBD modem for unit identification and registration.

Each box contains at least a GTTS-3000 provided with a factory connected installation cable and a brief installation guide. This complete Installation and User's manual can also be found on <http://www.gtts.eu/products.php> in pdf format.

2.2 Activation in the Iridium Network

Prior to mechanical and electrical installation the GTTS unit shall be activated in the Iridium Satellite Network.

Authorized dealers only send an email to GTTsactivate@gtts.eu with a list of IMEI numbers of the units that needs to be activated. Only activation requests from authorized dealers can be processed. The IMEI numbers can be found on 2 different barcode labels on the bottom of the unit and also on a barcode label on the carton packing. IMEI nr. always starts with 300234.....

Activation is normally realized the same day during GTTSsystems B.V. business hours. Your subscription starts from this day.

2.3 Installation general

READ THIS FIRST

The GTTS-3000 is easy to install. It offers three different types of installation.

- Tube/railing mounting.
- Magnet Mounting on deck or rooftop.
- Screw mounting on deck or rooftop.

It shall be installed always in a horizontal position with no obstructions to the sky above.

The GTTS-3000 will send a first GPS position automatically to confirm the unit is switched on and working properly. Please note that it can take several minutes before a message from the unit is received (depending on satellites in sight). GPS takes typically 40..50 seconds for a cold start fix. Latency in the Iridium Network is very low. Typical values measured 12 .. 15 seconds

It is strongly recommended to order the optional Basic Indoor Connection Box (GTTS-3000 BIC Box) along with each GTTS-3000 system. It is low priced and makes the electrical installation easier and safer.

Besides the ease of installation, it has two LED indicators for power status and system status. The BIC Box is also provided with a serial RS485 port that can be used for software upgrades and also functions as a debug or monitor port. With an off-the-shelf RS485<->USB converter it is very easy to connect the GTTS-3000 through the BIC Box to a computer.

2.3.1 Installation with magnet mounting

Holding the GTTS-3000 with both hands, hold it over the area where it shall be placed. Tilt the GTTS-3000 appr. 45 degrees as shown in figure 3 below. Then lower it onto the steel surface and turn the GTTS-3000 until the magnets make contact with the steel surface. Try to do this as controlled as possible to avoid a 'slam' and keep your fingers free from the GTTS-3000 surface contact area. Slamming the unit onto the steel surface could cause damage due to extreme G-forces that might occur.

Reverse this procedure to remove an unit.

Never try to slide a unit. This will damage the magnetic's corrosion protective coating and the steel (paint) surface it is mounted on.

It is advised to coat the magnets with ship's paint or other corrosion protective coating, if available on board, prior to installation.



Figure 3. Placement on top level deck.

The connection cable shall be routed and fixed properly to avoid dangerous situations that might occur due to loose cables.

Decent installation counts for all of the mounting options.

2.3.2 Installation on railing or tube

The mounting hardware of the GTTS-3000 has a clever design that allows tube clamp mounting on a wide variety of tube diameters ranging from 32mm to 60mm.

Installation on a railing or tube with a diameter less than 40mm.



Please note the orientation of the lower mounting plate

Installation on railing or tube with diameter larger than 40mm



Please note the orientation of the lower mounting plate

It is advised to wrap a sheet of thin rubber around the tube or railing to protect the paint coating. It also will add to the clamp's grip.
Do not over tighten the four M5 bolts. (Maximum torque 4Nm)

2.3.3 Installation with screw mounting

If the GTTS-3000 should be installed using 4 pieces M5 bolts, drill 4 holes $\text{\O} 5,5$ mm according the drill plan. See figure below.

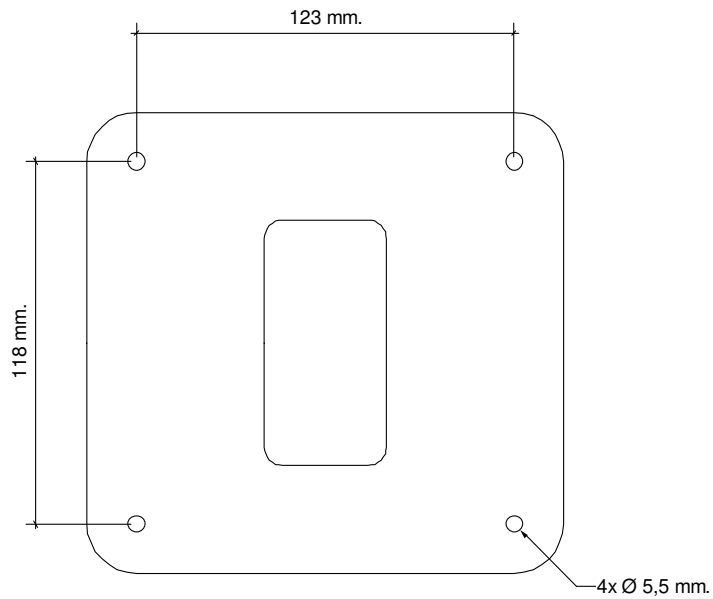


Figure 6. Drill plan

If the (platform) screw mounting installation is desired, pay special attention to the possible water ingress due to the drilled holes in the mounting surface.

2.4 Electrical Installation

The GTTS-3000 transceiver (outdoor part) comes prewired with a six wire screened cable. Connect the V+ and V- wire to an 1Amp/12..24V DC power supply is all that is needed to make the GTTS-3000 operational. We suggest to place an inline fuse of 1Amp slow. Although the power supply input is protected against polarity reversal and voltage transients it is good practice to check (colour coding) scheme once again before supplying the permanent voltage supply.

Number	Colour	Function	Remarks
1	Pink	Output Open Collector	0.7 Amps / 60V DC (sink)
2	SPARE	Analog Input	Analog 0..30V IN
3	Gray	Opto Coupled digital input	Opto 5..24V in
4	Yellow	RS485/RS422 Data+	Positive going
5	Green	RS485/RS422 Data-	Negative going
6	Brown	V+ IN	9..24 Volt (1Amp Max.)
7	White	V- IN	0V (Minus)
8	Yellow/Green	Shield	DC isolated from 0V (Minus)

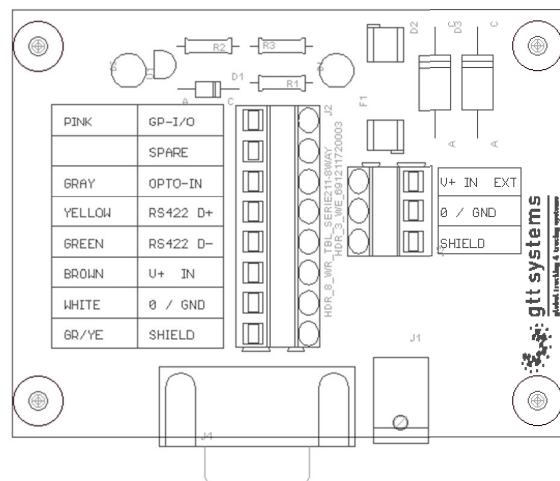
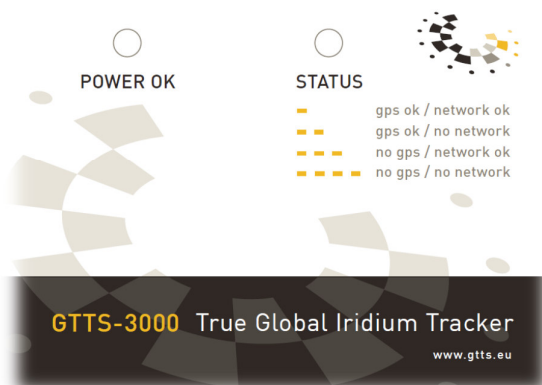
2.4.1 Electrical Installation using the BIC Box

Installation becomes easier and more safe if the optional Basic Indoor Connection (BIC) Box is used. It provides a 5.1mm DC jack input for 24V AC/DC adapter in parallel with a terminal block for power connection. The two DC Power inputs are separated by a diode network and it is allowed to connect both simultaneously for redundant power input. Screw type terminal blocks offer easy and proper connection of the wiring.

Enclosed also an 1Amp Slow blow fuse. It has a DB9 connector for easy connection to a computer or other device.

It also has two LED indicator to show the Power status and the status of the device.

The BIC Box also provides return current protection if there is a power loss and the transceiver runs from the optional embedded backup battery.



3 Configuration

The GTTS-3000's are shipped from factory in a pre-configured state.

The customers desired configuration is passed to GTTSystems B.V. by the dealers. The units are then configured, tested, packed and shipped. Currently there are three configurations released and integrated into the GTTS-3000 firmware. Two of those provide backward compatibility with the GTTS-2000 series. This allows system integrators to switch from the GTTS-2000 to the GTTS-3000 without any hassle.

Configuration can be altered "over the air".

A dedicated Windows® Platform computer configuration tool allows dealers to (re)configure or select a configuration and set a variety of setting like reporting frequency etc..

3.1 AWS Generic Protocol

The AWS Generic Protocol is based upon the messagepack format (see www.msgpack.org)

This protocol has a bit more overhead than the other protocols, but in return it offers great flexibility if one want to use the GTTS-3000 as a data terminal or transceiver next to, or instead of, a tracking and tracing device..

3.2 Configuration DAT-01

DAT-01 is a GTTS-2000 protocol from origin.

Characteristic of configuration "DAT-01" is that the GTTS-3000 reports continuously at a configured time interval. In this configuration the unit is standard programmed to send a report every 180 minutes. Every report holds 2 GPS positions (calculated and stored every 90 minutes).

This configuration is often used to track and trace vessels.

The GTTS-3000 will send a first GPS position immediately after power up to confirm the unit is switched on and working properly. Please note that it can take several minutes before a message from the unit is received (depending on satellites in sight).

At preset time intervals it will try to get a GPS fix and connect to the Iridium network again.

3.3 Configuration AUT-01

AUT-01 is a GTTS-2000 protocol from origin.

Characteristic of configuration "AUT-01" is that the GTTS-3000 reports at a preset time interval.

But only if the motion sensor detected motion within this time interval.

In this configuration the unit is programmed to send a report every 120 minutes. Every report holds 2 GPS positions (calculated and stored every 60 minutes).

This configuration is often used to track and trace vehicles and (sea) containers

As soon as the GTTS-2000B is mounted onto ferrous metal, it will switch on automatically.

The GTTS-2000B will send a first GPS position immediately to confirm the unit is switched on and working properly. Please note that it can take several minutes before a message from the unit is received (depending on satellites in sight).

4 Specifications

Physical	Size overall (LxBxH)	19x18x9 cm
	Height above mounting rail or deck	2 .. 7.5 cm
	Shipping Weight	Depends on configuration
	Magnets Holding Force	1080N (~108 Kg)
	Mounting Hardware	Stainless Steel 316
Environment	Operating Temperature	-40 .. +65 C
	Storage Temperature	-40 .. +65 C
	Humidity	Relative 100%
Electrical	Working Voltage	12 .. 24 Volts DC (9Vmin .. 36V max)
	Power consumption average	Receive: <50mA@12V / <25mA@24V
	Power consumption during SBD transmission	Transmit: <150mA@12V / <75mA@24V
	Heater	Optional
	Backup Battery	Optional
Interface	Serial port I/O	RS-485 / RS-422 (115k2 max)
	1 Opto Coupled digital Input	5 .. 24V DC
	1 Analog Input	0..30V@12bit ADC
	1 Output Open Collector Protected Mosfet	0.7 Amps / 60V DC (Sink)
Satellite	Iridium Constellation	True Global Coverage
	Frequency	1616 .. 1626.5 MHz
	Transmission	Short Burst Data TDMA/FDMA
	Communication	Direct IP or email
	Iridium RX/TX Antenna	integrated Patch Antenna
	GPS (L1band)	Fastrax IT-500
	Accuracy	1.8 m
GPRS RX Antenna	Integrated Patch	