

GOLDAIR

Operating Instructions

Oil Column Heater



Model No: GOC4011

General Care And Safety Guide

Thank you for choosing a Goldair Oil Heater. This Goldair Heater has been designed and manufactured to high standards of engineering and with proper use and care, as described in this leaflet, will give you years of useful service. Please read these instructions carefully.

1. Use only the voltage specified on the rating label of the appliance.
2. Keep all objects at least 1 metre from the front, sides and rear of the appliance. Do not place appliance close to radiant heat source.
3. Do not operate in areas where petrol, paint or other flammable liquids are used or stored.
4. Do not insert or allow foreign objects to enter any ventilation or exhaust opening, as this may cause an electric shock, fire or damage to the appliance. Do not sit on the appliance.
5. Do not operate this appliance with a damaged cord, plug or after the appliance malfunctions or has been dropped or damaged in any manner. Return to a qualified electrical person for examination, electrical service or repair.
6. This appliance is intended for household use only and not for commercial or industrial use.
7. Use this appliance only as described in this manual. Any other use is not recommended by the manufacturer and may cause fire, electrical shock or injury.
8. The common cause of overheating is deposits of dust or fluff in the appliance. Ensure these deposits are removed regularly by unplugging the appliance and vacuum cleaning the air vents and grills.
9. Do not use abrasive cleaning products on this appliance. Clean with a damp cloth (not wet) rinsed in hot soapy water only. Always remove plug from the mains supply before cleaning.
10. Do not connect the appliance to mains supply until completely assembled and adjusted.
11. Switch off and use handles provided when moving.
12. Do not operate with cord set coiled up as a heat build up is likely, which could be sufficient to become a hazard.
13. Do not use an extension cord, powerboard, or external timer with this unit.
14. Do not remove plug from power socket until the appliance has been switched off.
15. Do not remove plug from power socket by pulling cord; always grip plug.
16. Always unplug appliance when not in use.
17. Do not locate the heater directly below any power socket during operation.
18. Do not twist, kink or wrap the cord around the appliance, as this may cause the insulation to weaken and split. Always ensure that all cord has been removed from any cord storage area and is unrolled before use.
19. This appliance is not intended for use by persons (including children) with reduced physical, sensory or mental capabilities or lack of experience and knowledge, unless they are supervised or have been given instruction concerning the use of the appliance by a person responsible for their safety.
20. Do not use this appliance in the immediate surrounds of a bath, a shower, or a swimming pool or other liquids. The appliance must not be immersed in any liquids.
21. When the appliance has been unpacked, check it for transport damage and ensure all parts have been delivered. If parts are missing or the appliance has been damaged, contact the Goldair Customer Services Team.
22. If your appliance does not work, or is not working properly, contact the place of purchase or the Goldair Customer Services Team. Repair work on the appliance by unqualified persons can cause serious risk to the user.
23. There are no user serviceable parts installed in the unit.
24. Do not place the unit in wardrobes or other enclosed spaces as this may cause fire hazards.
25. This unit is not supposed to be used in or around locations where foodstuffs, works of art or delicate articles of science, etc are stored.
26. Indoor use only.
27. Children should be supervised to ensure that they do not play with the appliance.
28. Ensure heater is on a flat, stable, heat-resistant surface.
29. It is important that you do not cover this heater.

TECHNICAL SPECIFICATION

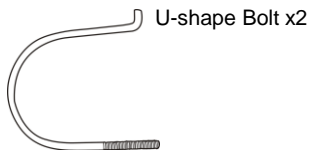
Model No: GOC4011

Supply: 230-240VAC 50Hz

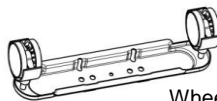
Wattage: 2300-2400W

Components Of Your Oil Column Heater

Main Body x1



U-shape Bolt x2



Wheel Castor x2

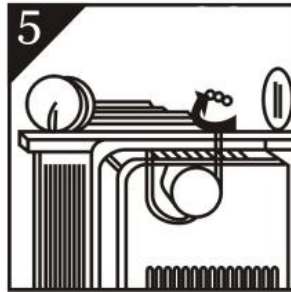
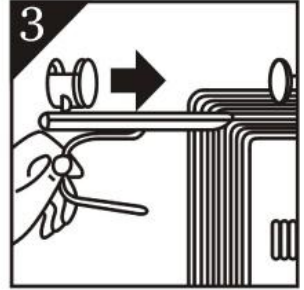
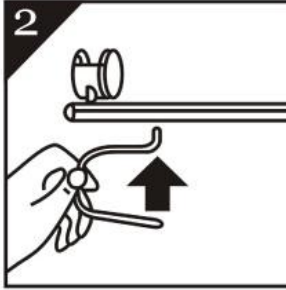


Wing Nut x2

- A. Main Body
- B. LCD Display
- C. Control Panel
- D. Handle
- E. On/Off Switch
- F. Cable Storage
- G. Wheel Assembly
- H. Wheel



Assembly Of Your Oil Column Heater



ASSEMBLY OF THE HEATER

Carefully turn the Main Body upside-down on a non-scratching and stable surface. Be careful to prevent damage to the paint finish or your floor surfacing (Fig.1).

Fit the wheel assemblies onto the Main Body by placing the U-shaped bolts between the outermost fins on each side of the Main Body (see Fig.2 - 4).

Securely fasten the wheel assemblies onto the Main Body by screwing the wing nuts onto the U-shaped bolts (see Fig. 5).

IMPORTANT: Please fit the wheel assemblies as per the diagram. Any other position may affect the stability of the heater.

WARNING: Operate the heater in normal upright position only with wheel assemblies attached to the bottom. Any other position could create a hazardous situation.

Operating Your Oil Column Heater

Always choose a safe location for the heater, keeping in mind the safety precautions outlined. Ensure all packaging has been removed from the unit before use. This appliance requires no installation, it should be used solely as a portable appliance.

WARNING Keep all objects at least 1 metre from the front, sides and rear of the appliance.

HEAT CONTROL SWITCH



Check that the Heat Control Switch is set to Off position before plugging the heater into the mains supply.

Press the On/Off switch along side the heater to On (I).

Press the power button in the centre of the control panel once to start the heater on High Heat (II). If left at this setting, the unit will run continuously on High Heat and will not shut off until the unit is manually turned off.

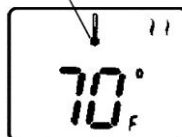
Press the power button again to change to Low Heat (I). If left at this setting, the unit will run continuously on Low Heat and will not shut off until the unit is manually turned off.

Press the power button a third time to turn the heater OFF, and then press the On/Off switch along the side of the heater to Off (O).

For greater economy, use the High Heat setting initially and then switch to the Low Heat setting.

SETTING THE TEMPERATURE

Temperature Icon



Press the MODE button until the Temperature Icon blinks.

Use the "+" and "-" button to set your desired temperature.

After the desired temperature is set the Temperature Icon will stop blinking and the current room temperature will appear.

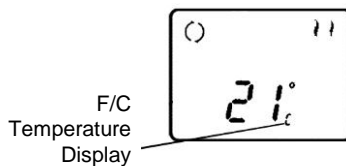
The heat will turn-off shortly after the set room temperature is reached and the Temperature display will blink.

The heater will turn back on when the room temperature drops below the set temperature. The temperature display will then stop blinking and will display the current room temperature.

NOTE: The temperature display will not reflect the accurate room temperature until the heater has been operating for at least 20 minutes.

FAHRENHEIT/CELSIUS FUNCTION

This heater offers the option to read the temperature setting in either Fahrenheit or Celsius.



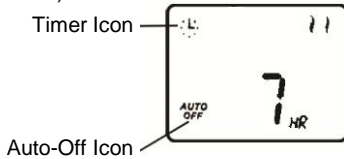
F/C feature functions from only the Power or Set Temperature screens.

Press F/C button to toggle between Fahrenheit and Celsius.

Operating Your Oil Column Heater

SET THE TIMER TO AUTO-OFF

This function should only be set if you want the heater to automatically shut off after a certain period of time (1 to 24 hours from the time the function is set).



Always set your desired temperature prior to setting the Timer so that the heater will shut off at the desired temperature setting.

Press the MODE button until the Timer icon blinks. The hour display will appear. The Auto Off icon will also appear.

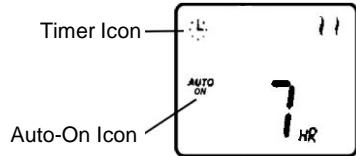
Use the "+" and "-" button to set the heater operation time for between 1 and 24 hours from now. This function will activate once the Timer icon stops blinking.

The heater will automatically turn-off when time runs out.

NOTE: If the desired temperature was set prior to setting the Timer function, the heater will cycle on and off as per the selected desired temperature setting and will discontinue operation once the programmed Timer setting has been reached.

SET THE TIMER TO AUTO-ON

This function provides a delayed start option and should only be set if you want the heater to automatically turn ON after a certain period of time (1 to 24 hours from the time the function is set).



Always set your desired temperature prior to setting the Timer so that the heater will turn on at the desired temperature setting.

Press the MODE button until the Timer icon blinks. The hour display will appear. The Auto On icon will also appear.

Use the "+" and "-" button to set the heater start time for between 1 and 24 hours from now. This function will activate once the Timer icon stops blinking.

The heater will automatically turn on when time expires.

NOTE: If the desired temperature was set prior to setting the Timer function, the heater will cycle on and off as per the selected desired temperature setting once the heater begins to operate.

TIMER RESET

Press the MODE button until the Continuous Run icon (⊖) appears.

When set to Continuous Run mode, the auto-on/auto-off settings and the temperature setting will be cancelled.

In Continuous Run, the heater will operate to the thermostat maximum temperature setting.

WARNING! Take care in positioning your heater, using the Timer will mean the heater will come on automatically. Fire may result if the heater has been placed next to combustible material.

Operating Your Oil Column Heater

SAFETY DEVICE

This appliance has three protection devices:

The first device will automatically turn the appliance off if the appliance is not in the appropriate operating position.

The second device automatically disconnects & reconnects the appliance at a pre-set temperature.

The third device disconnects the appliance permanently in case of overheating, by means of a thermal fuse (it is non resettable).

IMPORTANT! NEVER COVER THIS HEATER

WARNING: Do not use this heater with a programmer, separate timer, remote-control system or any other device that switches the heater on automatically.

CAUTION: The heater generates heat during use. Proper precautions must be taken to prevent the risk of burns, scalds, fires or other damage to persons.

CARE AND CLEANING

The heater requires regular cleaning to ensure trouble free operation:

Unplug the heater from the mains supply before cleaning.

Ensure that the heater has been allowed to cool down completely before cleaning.

Use a damp cloth (not wet) to wipe the exterior of the heater to remove dust and dirt.

Never use solutions such as benzene, thinners or polishing agents.

Use a vacuum cleaner to remove dust and fluff from around the grills and fins.

Ensure the heater is dry before plugging back into the mains supply.

Do not attempt to dismantle the heater. There are no user serviceable parts. For service or repair, contact an authorised electrical service technician.

PROOF OF PURCHASE

To receive warranty retain receipt as proof of purchase.

GOLDAIR

SUPPORT AND TECHNICAL ADVICE

Goldair – New Zealand

Monday – Friday 8am-5pm

Phone +64 (0)9 917 4000

Phone 0800 232 633

info@cdb.co.nz

Goldair – Australia

Monday – Friday 8am-5pm

Phone +61 (0)3 9336 4423

Phone 1300 465 324

info@cdbgolair.com.au

Two Year Warranty

Thank you for purchasing this Goldair product. Your product is warranted against faults and manufacture when used in normal domestic use for a period of **two years**. In non-domestic use Goldair limits the voluntary warranty to **three months**.

Goldair undertake to repair or replace this product at no charge if found to be defective due to a manufacturing fault during the warranty period.

This warranty excludes damage caused by misuse, neglect, shipping accident, incorrect installation, or work carried out by anyone other than a qualified electrical service technician.

PLEASE KEEP YOUR RECEIPT AS THIS WILL HELP VERIFY YOUR WARRANTY.

The benefits given to you by this warranty are in addition to other rights and remedies available to you under law in relation to the goods or services to which this warranty relates.

In Australia, our goods come with guarantees that cannot be excluded under the Australian Consumer Law. You are entitled to a replacement or refund for a major failure and compensation for any other reasonably foreseeable loss or damage. You are also entitled to have the goods repaired or replaced if the goods fail to be of acceptable quality and the failure does not amount to a major failure.

In New Zealand this warranty is additional to the conditions and guarantees of the Consumers Guarantee Act (1993).

Goldair – New Zealand

CDB Goldair
PO Box 100-707
N.S.M.C
Auckland

Phone +64 (0)9 917 4000
Phone 0800 232 633
www.goldair.co.nz

Goldair – Australia

CDB Goldair Australia Pty
PO Box 574
South Morang
Victoria, 3752

Phone +61 (0)3 9336 4423
Phone 1300 GOLDAIR (1300 465 324)
www.goldair.com.au

Goldair Two Year Warranty (IMPORTANT: Please complete and retain this warranty card)

Name _____

Address _____

Place Of Purchase _____ Date Of Purchase _____

Name Of Product _____ Model Number _____

Attach a copy of the purchase receipt to this warranty card