



Because your life is on the line!

626 Thirteenth Street • Franklin, PA 16323 • Toll Free: 877.228.9327 • 814.437.1808

fax: 814.437.2544 • fcp@velocity.net • www.frenchcreekproduction.com

Proudly Made in the U.S.A.

User Manual – 1792 Standing Seam Metal Roof Retractable Swivel Anchor



This manual is intended to meet the Manufacturer Instructions as required by ANSI Z359.1 and should be used as part of an employee training program as required by OSHA.

ATTENTION: This product serves as part of a fall protection system. All users, must read, understand, and follow the manufacturer's instructions for each and every component of the system. All instructions must be followed for proper application, installation, use, and maintenance of this product. Changing the product, misuse of the product, or failure to follow instructions may result in serious injury or death.

If you have any questions concerning the application, installation, use, or maintenance of this product, please contact FrenchCreek Production.

DESCRIPTION:

The 1792 Self Retracting lifeline Roof Anchor is designed for attachment to seamless metal roofs. The system features a 360 degree swivel that allows the worker freedom to move around the work area. The unit is designed to fit the following FrenchCreek RL-Series Self Retracting Lifelines: RL25AG, RL25AS, RL25AT, RL30G, RL30SS, RL30T, RL50G, RL50SS, and RL50T and others depending on size and model. Please consult FrenchCreek Production if there are any questions or concerns.

APPLICATIONS:

The 1792 is an anchorage connector for a personal fall arrest system, designed to be installed on a seamless metal roofs. The two models available are: 1792-18 which can attach to 12, 16, and 18 inch seams, and the 1792-36 which can attach to 24, 30, 32, and 36 inch seams.

LIMITATIONS:

The following application limitations must be considered before using this equipment:

CAPACITY:

This equipment is designed for use by persons with a combined weight (clothing, tools, etc.) of no more than 310 lbs. (141 kg). No more than one personal protective system may be connected to this device at one time.

PERSONAL FALL ARREST SYSTEM:

The personal fall arrest system used with this device must meet all applicable OSHA and ANSI requirements.

The unit must be mounted directly to the surface. Never work about the unit, and keep free fall distance to a minimum. Never let the self retractable lifeline get caught on obstacles.

SWING FALLS:

Swing fall occur when the anchorage point is not directly above the point where a fall occurs. The force of striking and object in a swing fall may cause serious injury or death. Minimize swing falls by working as close as possible to the anchorage. Swing falls will significantly increase the clearance required when a self retracting lifeline or other variable length connecting subsystem is used.

FALL CLEARANCE:

There must be sufficient clearance below the user to arrest a fall before the user strikes the ground or other obstruction. The clearance required is dependent on the following factors:

- Elevation of the 1792
- Length of connecting subsystem
- Deceleration distance
- Movement of harness attachment element (sliding D-ring)
- Worker height
- Free fall distance

See personal fall arrest system manufacturer's instructions for more information.

ENVIRONMENTAL HAZARDS:

Use of this equipment in areas with environmental hazards may require additional precautions to reduce the possibility of injury to the user or damage to the equipment. Hazards may include, but are not limited to; heat, chemicals, corrosive environments, high voltage power lines, gases, moving machinery, and sharp edges. Contact FrenchCreek if you have questions about using this equipment where environmental hazards exist.

GENERAL REQUIREMENTS:

- Users shall be provided with all instructions and warnings. These warnings and instructions must be read and understood prior to using the equipment.
- This product is designed for personal fall protection. Never use fall protection equipment for purposes other than which it was designed and intended for.
- This device must only be used by trained personnel.
- Users must reference ANSI Z359.1 and all applicable regulatory standards pertaining to occupational safety.
- All equipment must be visually inspected prior to each use. A more thorough inspection procedure is recommended by a competent individual on a regular basis (6 month intervals recommended).

- A competent person must ensure system compatibility to minimize the potential for accidental disengagement.
- Equipment must not be altered in any way. Repairs or modifications must be performed only by the equipment manufacturer or persons authorized in writing by the manufacturer.
- Any products exhibiting deformities, unusual wear, deterioration, or not passing inspection must be immediately removed from service.
- Any products subjected to fall arresting forces must be removed from service.
- Fall arrest systems must be rigged to limit the free fall distance (6' maximum) and ensure that no lower level is struck.
- Fall arrest systems, when stopping a fall, must limit the maximum arresting force to 1800 lbs. or less. Forces experienced during a fall as well as prolonged suspension may cause bodily injury. In order to minimize this risk of injury, the user shall have a rescue plan and the means at hand to implement it when using this equipment.
- Always check for obstructions below the work area to make sure the potential fall path is clear. Remember that shock-absorbers can elongate up to 3 ½'.
- Environmental hazards must be considered when selecting fall protection equipment. Equipment must not be exposed to chemicals which may have a damaging effect. All synthetic materials must be protected from slag, hot sparks, open flames, or other heat sources.
- This product should not be used around moving machinery, electrical hazards, sharp edges, and abrasive surfaces.
- The maximum working load is 310 lbs. unless otherwise labeled.

CONNECTING DEVICES WARNINGS:

- Tie off in a manner that will limit the free fall to the shortest possible distance and ensure that a lower level will not be struck should a fall occur. Shock-absorbers can elongate up to 3 ½'. This additional elongation must be considered when choosing a tie-off point.
- Do not use lanyards with non-locking snap hooks or connectors.
- Always visually check to ensure the snap hooks freely engage the d-ring or anchorage point and that its keepers are completely closed and locked and are never load bearing.
- Do not attach multiple lanyards together or tie a lanyard back onto itself unless it is specifically designed for such a connection.
- Do not allow synthetic materials to come in contact with high temperature surfaces, welding, heat sources, electrical hazards, or moving machinery.
- Do not tie knots in lanyards or wrap lanyards around sharp, rough edges, or small diameter structural members. Use a cross arm strap or other compatible anchorage connector.
- Never use a steel cable lanyard for fall arrest unless used in conjunction with a shock-absorber. The use of a shock-absorber for fall arrest applications is strongly recommended regardless of the type of lanyard.
- Never tie off to an object that is not compatible. Make sure that snap hook keepers are never load bearing.

ANCHORAGE:

- Anchorages must be capable of supporting 5000 lbs. per worker, or be designed, installed and used as part of system which maintains a safety factor of at least 2:1 under the supervision of a qualified person.
- Make sure the anchor point is at a height that limits the free fall distance to 6' or less and ensures that no lower level is struck.
- The anchor point must be compatible with the connecting device (snap hook or carabiner) and must not be capable of causing a load to be applied to the keepers.

- Never use an anchor point that will not allow the snap hook or carabiner gate to close completely.

SYSTEM REQUIREMENTS:

PERSONAL FALL ARREST SYSTEM:

The 1792 is designed for use with FrenchCreek approved components or subsystems. Use of this equipment with non-approved components may result in incompatibility between equipment, and could affect the reliability and safety of the complete system. Personal fall arrest systems used with this equipment must meet applicable OSHA, state, federal, and ANSI requirements. A full body harness must be worn by the worker when connected to the 1792. As required by OSHA, the personal fall arrest system must be capable of arresting a worker's fall with a maximum arresting force no greater than 1,800 lbs., and where possible, limit the free fall distance to 6 ft. or less. If the maximum free fall distance of 6 ft (1.83 m) must be exceeded, the employer must be able to document, based on test data, that the maximum permissible arresting forces will not be exceeded, and that the personal fall arrest system will function properly.

When a free fall greater than 6 feet is possible, it is necessary to use a personal fall arrest system incorporating a energy absorber designed specifically for this application. FCP manufactures multiple shock absorbing lanyards specifically designed for this application. Contact FCP for product details.

COMPATIBILITY OF COMPONENTS:

FrenchCreek equipment is designed for use with FrenchCreek approved components and subsystems only. Substitutions or replacements made with non-approved components or subsystems may jeopardize compatibility of equipment and may affect the safety and reliability of the complete system.

CONNECTORS/CONNECTIONS:

Connectors are considered to be compatible with connecting elements when they have been designed to work together in such a way that their sizes and shapes do not cause their gate mechanisms to inadvertently open regardless of how they become oriented. Connectors (hooks, carabiners, and D-rings) must be capable of supporting at least 5,000 lbs. Connectors must be compatible with the anchorage or other system components. Do not use equipment that is not compatible. Non-compatible connectors may unintentionally disengage. Connectors must be compatible in size, shape, and strength. Self locking snap hooks and carabiners are required by ANSI Z359.1 AND OSHA. Only use connectors that are suitable to each application. Ensure all connections are compatible in size, shape and strength. Do not use equipment that is not compatible. Ensure all connectors are fully closed and locked. Connectors (snap hooks and carabiners) are designed to be used only as specified in each product's user's instructions.

Connectors should not be connected:

- To a D-ring to which another connector is attached.
- In a manner that would result in a load on the gate.
- In a false engagement, where features that protrude from the snap hook or carabiner catch on the anchor and without visual confirmation seems to be fully engaged to the anchor point.
- To each other.
- Directly to webbing or rope lanyard or tie-back (unless the manufacturer's instructions for both the lanyard and connector specifically allows such a connection.)
- To any object which is shaped or dimensioned such that the snap hook or carabiner will not close and lock or that accidental disengagement could occur.

ANCHORAGE STRENGTH:

Anchorage used for attachment of a personal fall arrest system shall be independent of any anchorage being used to support or suspend platforms, and must support at least 5,000 lbs per user attached; or be designed, installed, and used as part of a complete personal fall arrest system which maintains a safety factor of at least 2:1, and is supervised by a qualified person.

INSTALLATION AND USE:

WARNING: Do not alter or intentionally misuse this equipment. Consult FrenchCreek Production when using this equipment in combination with components or subsystems other than those described in this manual. Some subsystem and component combinations may interfere with the operation of this equipment. Use caution when using this equipment around moving machinery, and sharp edges.

WARNING: Consult your doctor if there is reason to doubt your fitness to safely absorb the shock from a fall. Age and fitness seriously affect a worker's ability to withstand fall. Pregnant women or minors should not use this equipment.

BEFORE USE:

This equipment must be carefully inspected according to the inspection criteria before each and every use.

INSTALLATION:

The 1792-18 standing seam roof clamp can attach to any 12, 16, and 18 inch standing seam that meets the requirements specified for size and strength. The 1792-36 standing seam roof clamp can attach to any 24, 30, 32, and 36 inch standing seam that meets the requirements specified for size and strength.

The FrenchCreek Production 1792 is designed to provide a 360 swivel for self retracting lifeline for use on standing seam steel roofing applications. The two models available are 1792-18 which can attach to 12, 16, and 18 inch seams. The 1792-36 can attach to 24, 30, 32, and 36 inch seams. Do not use this product on any other standing seam steel roofing applications, as serious injury or death could occur.

Warning: Consult FrenchCreek Production if your structural spacing is different.

The FrenchCreek Production 1792 must be installed at least 6' from any roof edge (gable or eave). The legs are to be adjusted to fit the standing seam.

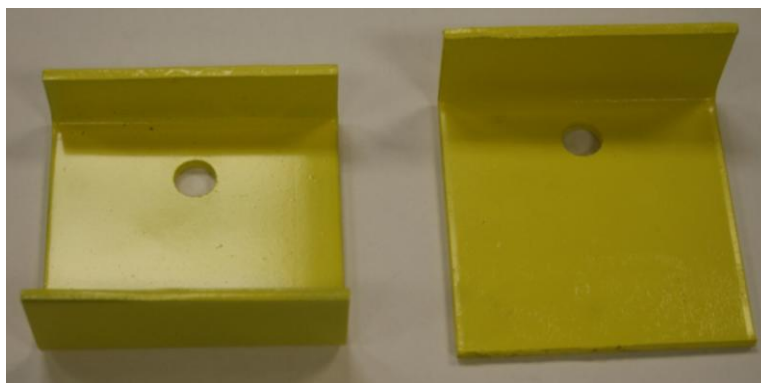


Figure 1: C Foot (Left)

L Foot (Right)

Installation of the 1792 Base:

Step A. Remove the retainer snap pin

Step B. Adjust the legs to fit the size of the standing seam steel roof. (Refer to Figure 1)

Step C. Re-attach the retainer snap pin making sure to snap in the retaining safety wire

Step D. The non adjustable feet that are attached to the legs of the 1792 must fit snug to the standing seams of the steel roof. Note: The C foot must face the standing seam roof so the coil of the standing seam fits into the C of the foot. The L foot must face the flat part of the standing seam.

Step E. Non adjustable feet are in place begin tightening the adjustable feet to a torque of 45-65 ft. /lbs.

Note: Never attach a C foot to a C foot or attach an L foot to an L foot. This is a non-compatible attachment.

INSTALLING THE SRL TO THE 1792:

Once the 1792 anchor base is attached, install the self retracting lifeline as follows:

Step A. Remove the bolt on the swivel anchor that runs through the side plates

Step B. Place self retracting lifeline on the main plate.

Step C: Re-Installing the Bolt Instructions:

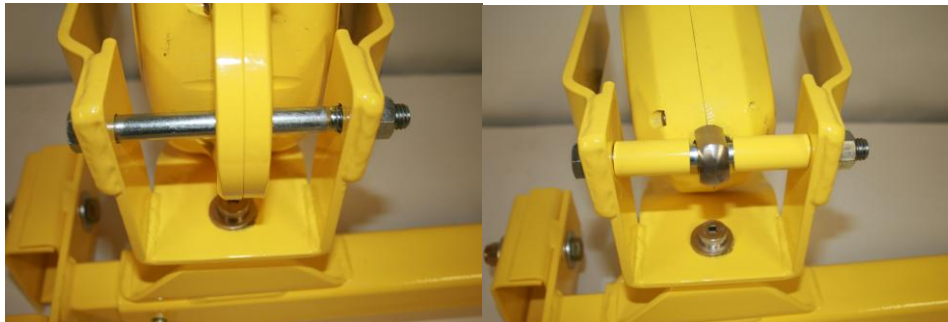


Figure: 2

Figure: 3

RL30 Series or RL50 Series: (refer to Figure 2)

Install the bolt through:

1. One side of the anchor plate
2. The handle of the retractable
3. Through the other side of the anchor plate

RL25 Series: (refer to Figure 3)

Install the bolt through:

1. One side of the anchor plate
2. A support spacer (provided)
3. The swivel mount hole on the RL25 Series retractable
4. The second support spacer (provided)
5. Through the other side of the anchor plate

Step D. Secure the nut onto the bolt ensuring the bolt threads protrude beyond the lock-nut.

Step E. Attach the snap hook of the Self Retracting Lifeline to the back D-ring of the harness.

PERSONAL FALL ARREST SYSTEM:

Attach the self retracting lifeline or shock absorbing lanyard to the dorsal D-ring only of a full body harness. Make sure harness is donned properly for fit.

STRUCTURE:

Ensure the structure you will be connecting to have a 5,000 lbs or 2:1 safety factor before using this equipment. Approach the structure using appropriate access equipment.

OTHER CONSIDERATIONS:

When working on a structure do not take unnecessary risks such as jumping or reaching too far from the edge. Be aware of all environmental hazards in the area. Do not allow your connecting subsystem to pass under your arms or between your feet.

SHARP EDGES:

Avoid working where the connecting subsystem or other system components will be in contact with, or abrade against, unprotected sharp edges. If working around sharp edges is unavoidable, protection against cutting **MUST** be provided through the use of a protective cover.

IN THE EVENT OF A FALL:

The employer must have a rescue plan and the ability to implement a rescue.

RESCUE:

A Rescue should be performed in the timeliest manner considering all scenarios possible. Training on a rescue should be performed on a periodic basis.

TRAINING:

It is the responsibility of the user to assure they are familiar with these instructions, and are trained in the correct care and use of this equipment. User must also be aware of the operating characteristics, application limits, and the consequences of improper use of this equipment.

INSPECTION:

The unit should be inspected before each use and periodically by a competent person other than the user. Inspect the 1792 for cracks, dents, bends, corrosion, or other deformities. Make sure all parts are functioning properly and are not missing. Make sure all adjustment mechanisms are in proper working order. Ensure swivel is working correctly. Ensure all labels are present. Inspect self retracting lifeline per its set of instructions. **If at any time inspection reveals any unsafe conditions, remove from service immediately.**

MAINTENANCE, SERVICING, STORAGE:

Periodically clean the 1792 using water and a mild soap solution. Use a spray oil to lubricate the thrust bearing and lightly coat the anchor to prevent corrosion. Do not use acids or other caustic chemicals that could damage the system components. Store anchor in a cool dry place.

SPECIFICATIONS:

Material:	Carbon Steel
Finish:	Powder Coated Safety Yellow
Bearings:	SAE 841 Bronze Flanged-Sleeve Thrust Ball Bearing Stainless Steel
Nuts & Bolts:	Socket Head Shoulder Screw Stainless 1/2" Zinc Plated USS Flat Washer 3/8-16 Zinc Plated Nylon Insert Lock Nut 1/2"-13 x 6" ASTM A307A Zinc Finish Hex Bolt 1/2-13 Zinc Plated Nylon Insert Lock Nut
Legs Attachment Fasteners:	1/2" Grade 8 Zinc Plated Bolts 1/2" Zinc Plated Nuts