



ECO PAR sensor

11/2014, Edition 6

User manual



Section 1 Specifications	3
1.1 Mechanical.....	3
1.1.1 6-contact connector.....	3
1.1.2 3-contact connector.....	3
1.2 Electrical.....	4
1.3 Communications.....	4
1.4 Optical.....	4
Section 2 Operation and maintenance	5
2.1 Verify sensor operation.....	5
2.1.1 Verify analog data output.....	6
2.2 Set up sensor for deployment.....	6
2.3 Monitor data.....	6
2.4 Save data to sensor.....	6
2.4.1 Save data to host PC.....	7
2.5 Get data from sensor.....	8
2.6 Additional operations.....	8
2.6.1 Set date and time.....	8
2.6.2 Adjust options for data collection.....	9
2.6.3 Adjust views in plot data tab.....	10
2.7 Sensor maintenance.....	11
2.7.1 Clean and lubricate bulkhead connector.....	11
Section 3 Reference topics	13
3.1 Delivered items.....	13
3.2 Calibration.....	13
3.3 Terminal program operation.....	13
3.3.1 Common terminal program operations.....	13
3.3.2 Terminal program operation for sensors with internal memory.....	14
Section 4 Optional equipment	15
4.1 Test cable.....	15
4.2 Internal batteries.....	15
4.2.1 Remove batteries.....	16
4.2.2 Replace batteries.....	17
4.3 Bio-wiper and copper faceplate.....	18
4.3.1 Clean Bio-wiper and faceplate.....	18
4.4 External thermistor.....	20
4.5 ECO mounting bracket.....	21
Section 5 General information	23
5.1 Warranty.....	23
5.2 Service and Support.....	23
5.3 Waste electrical and electronic equipment.....	23

Section 1 Specifications

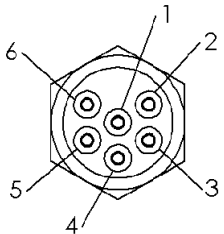
There are three models of Environmental Characterization Optics (ECO) Photosynthetically Active Radiation (PAR) sensors.

Model	Description
Bio-wiper (S)	Stores data and has a Bio-wiper to prevent bio-fouling
Battery (B)	Stores data and has internal batteries
Bio-wiper and battery (SB)	Stores data and has both a Bio-wiper and internal batteries

1.1 Mechanical

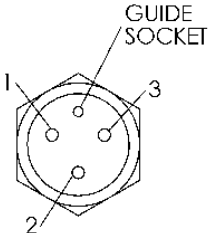
	S	B	SB
Diameter	6.30 cm		
Length	13.3 cm	28.00 cm	
Depth rating	300 m		
Temperature range	0–30 °C		
Weight in air, water	0.594 kg, 0.173 kg	1.062 kg, 0.163 kg	1.062 kg, 0.163 kg

1.1.1 6-contact connector

Contact	Function	MCBH-6-MP
1	Ground	
2	RX	
3	Analog 2	
4	Voltage in	
5	TX	
6	Analog 1	

Note: Contact 3 on two-parameter sensors is a second analog output.

1.1.2 3-contact connector

Additional bulkhead connector on sensors with internal batteries. Use the three-contact blue-tipped power connector that is supplied with the sensor to supply power to the sensor.		
Contact	Function	MCBH-3-FS
1	Voltage in	
2	No connect	
3	Battery out	

Specifications

1.2 Electrical

	S	B	SB
Input	7–15 VDC		
Current draw, typical	50 mA		
Current draw, standby	150 μ A		
Current draw, active wiper	140 mA	—	140 mA
Linearity	99%		

1.3 Communications

Sample rate	to 8 Hz
Data storage	108000 samples
RS232 output rate	19200 baud
Output resolution	14 bit
Digital output maximum	~16380 counts
Analog output maximum	5 V

1.4 Optical

Field of view	Spectrally corrected cosine response
Collector area	86 mm ²
Detectors	Custom 17 mm ² silicon photodiode
Cosine response	Within 3% @ 0–60 °C
Range	0–6500 μ mol photons/m ² /s

Section 2 Operation and maintenance

2.1 Verify sensor operation

⚠ WARNING

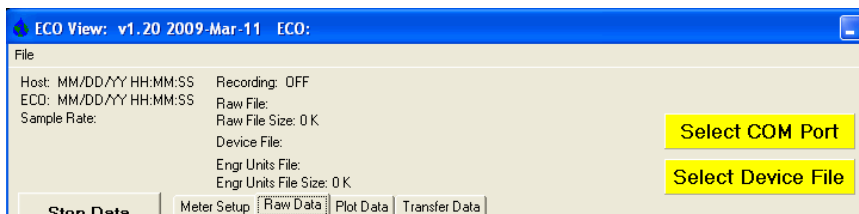
CDOM sensors use an ultraviolet LED light. Do not look directly at a UV LED when it is on. It can damage the eyes. Keep products that have UV LEDs away from children, pets, and other living organisms. Wear polycarbonate UV-resistant safety glasses to protect the eyes when a UV LED is on.

⚠ CAUTION

Do not supply more than 15 VDC to the sensor. More than 15 VDC will damage the sensor.

Make sure that the sensor operates before further setup and deployment.

1. Connect the 6-contact connector on the optional test cable (refer to the section on the [Test cable](#) on page 15 for details) to the sensor.
2. Remove the cap that protects the optical face of the sensor.
3. Connect a serial-to-USB adapter to the test cable to connect the test cable to the host PC.
4. Connect the sensor to a power supply.
 - a. Connect sensors with internal batteries to the manufacturer-supplied, three-contact, blue-tipped power connector.
The sensor comes on.
 - b. Connect sensors without internal batteries to the optional test cable and a regulated power supply set at 12 VDC.
5. Start the host software from the manufacturer-supplied CD.
 - a. Select the COM port on the host PC.
 - b. Select the device file for the sensor from the CD.
 - c. Select the baud rate if necessary. The default is 19200.



6. Turn on the power supply.
The sensor comes on.
7. Push **Start Data** on the host software.
8. Go to the *Raw Data* tab of the host software.
The data collected by the sensor shows in the "Signal" column.

Figure 1 Format of data collected by PAR sensors

02/06/12	16:44:44	8085
02/06/12	16:44:45	8085
02/06/12	16:44:46	8085
02/06/12	16:44:47	8085
02/06/12	16:44:48	8085
Date	Time	Signal

Note that RT and puck sensors show 9's instead of the Date and the Time.

9. Look at the maximum data value for the sensor. Hold a finger, the protective cap, or fluorescent stick if the sensor is a fluorometer, 1–4 cm away from the optical face of the sensor.

The data value in the "Signal" column in the *Raw Data* tab will increase toward the maximum data value specified for the sensor.

- Scattering and turbidity sensors: use a finger or the protective cap.
- CDOM sensors: use the blue fluorescent stick.
- Chlorophyll or phycoerythrin sensors: use the orange fluorescent stick.
- Uranine or phycocyanin sensors: use the yellow fluorescent stick.
- PAR sensors: point the sensor into the light.

10. Push **Stop Data**.

The Bio-wiper closes on sensors so-equipped. If the power is turned off in mid-cycle, the Bio-wiper starts at the beginning of the cycle when power is supplied again.

2.1.1 Verify analog data output

1. Connect the optional test cable to the sensor. Refer to the section on the [Test cable](#) on page 15 for details about test cables.
2. Use a regulated power supply to supply 12 VDC to the sensor or connect a 9V battery to the connectors on the test cable.
The sensor comes on.
3. Use the probes on a digital multimeter (DMM) to touch the RCA connector on the auxiliary leg(s) of the test cable.

2.2 Set up sensor for deployment

1. Refer to the previous section to make sure that the sensor operates correctly.
2. Replace the test cable with a sea cable for deployment.
3. Remove the protective cap from the sensor if necessary.
4. Use either the blue-tipped power connector (sensors with internal batteries only) or an external power supply to supply power to the sensor for deployment. If the power connector and a cable are both attached, the power is supplied by the equipment that supplies the highest voltage.
 - a. Attach the blue-tipped power connector to the three-contact connector. The sensor will begin operation as set up by the user. The manufacturer recommends this mode for moored applications.
 - b. Attach a sea cable to the six-contact connector and turn on the power supply (sensors without internal batteries).
5. Refer to the section on [Additional operations](#) on page 8 for details on how to set up the sensor for a specific application.

2.3 Monitor data

Monitor the data from the sensor in counts. The number of "Signal" columns will vary depending on whether the user has a one-, two-, or three-parameter sensor.

1. Make sure the sensor has power supplied and is on.
2. Push **Start Data**.
3. Go to the *Raw Data* tab.
Refer to the [Verify sensor operation](#) on page 5 illustration to see the format of the collected data.

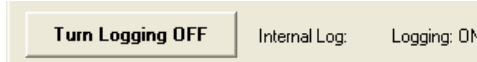
Note: RT and puck sensors usually show 9's as placeholders in the date and time columns.

2.4 Save data to sensor

1. Stop the sensor if it is on.

This puts the sensor in standby mode.

2. Push **Turn Logging ON/OFF**.



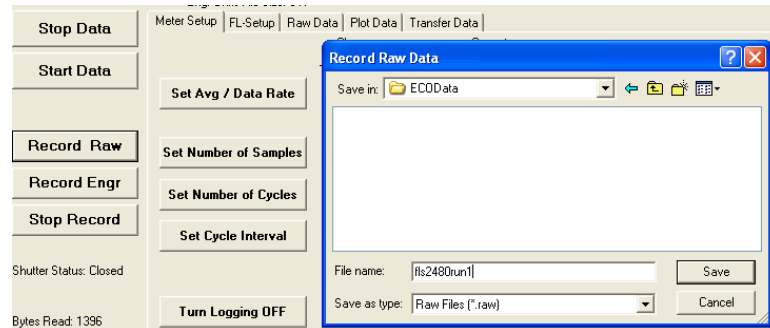
This turns on the logging, or data storage, in the sensor.

3. Push **Store to Flash**.

The yellow **Setup not Stored** warning will no longer show. The sensor will save data internally the next time the user turns it on.

2.4.1 Save data to host PC

To save data to the host PC in counts, push **Record Raw**. To save data in engineering units, push **Record Engr**. Data collected by the sensor is saved in real-time to the host PC.



1. Push **Record Raw**.

The *Record Raw Data* window shows in the host software.

2. Select a location on the host PC to store the data.

3. Type a file name.

4. Push **Save**.

5. Push **Record Engr**.

The *Record Engineering Data* window shows in the host software.

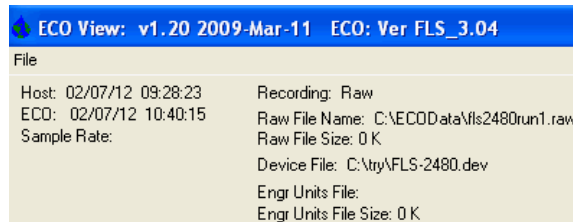
6. Select a location on the host PC to store the data.

7. Type a file name.

8. Push **Save**.

9. Make sure the PC is configured to save data.

- The file names from step 3 and step 7 will show in the host software.



10. Push **Start Data**.

The host software will show the host PC file sizes.

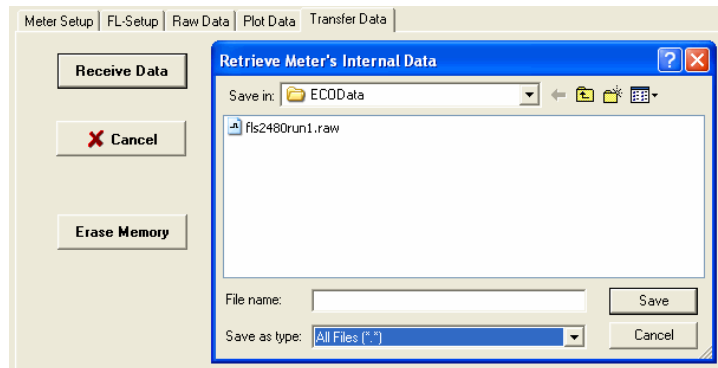
2.5 Get data from sensor

⚠ CAUTION

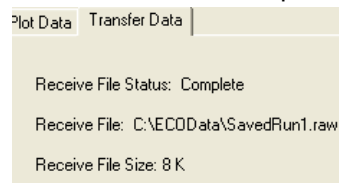
Do data transfers away from harsh environments such as strong electric fields or electrostatic discharge sources. Electrostatic Discharge (ESD) sources may temporarily disrupt data transfer. If this occurs, move the sensor away from the ESD source. Turn the power off and then on and continue operation.

Get the data from the sensor and save it to the host PC.

1. Make sure that the sensor is not on but has power supplied to it.
2. Select the *Transfer Data* tab in the host software.
3. Push **Receive Data**.



4. Select a location on the host PC to store the data.
5. Type a file name in the *Retrieve Meter's Internal Data* window.
6. Push **Save**.
The host software saves the sensor's internal data to the host PC.
7. Make sure that the data move is complete.



8. Open the data file to make sure that the data is on the host PC.
Contact the manufacturer to get a spreadsheet template for an *ECO* sensor.
9. To erase the data from the sensor's memory, Push **Erase Memory**.

2.6 Additional operations

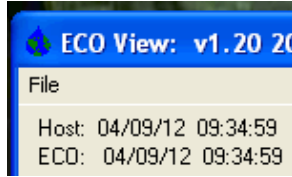
2.6.1 Set date and time

Make sure that the sensor is connected to a power supply that is turned on. Make sure that the host software program is open.

1. If the sensor is in operation, push **Stop Data** to stop the sensor.
2. Push **Set Date and Time** in the host software.
The host software adjusts the sensor's time to agree with the host PC.



- Push **Get Date/Time/Setup** to make sure that the sensor and the host PC show the same current time.



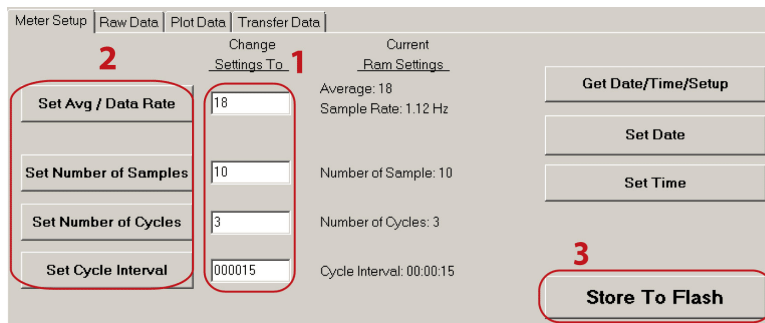
2.6.2 Adjust options for data collection

The manufacturer sets *ECO* sensors to operate at approximately 1 Hz, with the optional internal data storage turned on.

Table 1 Options to collect data

ECOView option	How it works
Set Avg/Data Rate	Adjust from 1 to 65535. Examples: 1-parameter sensors—approximately 1 Hz = 65; approximately 2 Hz = 30 2-parameter sensors—approximately 1 Hz = 30; approximately 2 Hz = 15 3-parameter sensors—approximately 1 Hz = 18; approximately 2 Hz = 6 PAR sensors—approximately 1 Hz = 310; approximately 2 Hz = 170
Set Number of Samples	Adjust from 0 to 65535. Use 0 to operate continuously.
The three options below apply only to sensors equipped with internal memory	
Set Number of Cycles	Adjust from 0 to 65535. Select the number of sample groups that the sensor will collect between low-power states.
Set Cycle Interval	Adjust the time interval between sample cycles. Do not type the colons. The minimum is 5 seconds.
Turn Logging ON	Push to turn data storage off or on (sensors with internal data storage only).

Adjust any of the options to collect data in the *Meter Setup* tab.



1 Enter the new value into the variable box.	2 Push the related button that is to the left of the variable box.	3 Push Store to Flash . The new value shows in the column <u>Current Ram Settings</u> .
---	---	---

In the example above, the 3-parameter sensor will operate at an "Average" of 18 and a "Data Rate" of 1.12 Hz. The sensor will collect data 10 rows of data for 3 cycles, with a

low-power interval of 15 seconds after each cycle. The sensor stops after the 10th row of the third cycle of data is collected.

Table 2 Data collection examples

<p>Collect moored data Set Avg/Data Rate = ± 1 Hz Set Number of Samples = 50 Set Number of Cycles = 24 Set Cycle Interval = 006000 Turn Logging ON/OFF = ON The sensor will collect data once per second, 50 times every 60 minutes for 24 hours, and store the collected data.</p>	<p>Collect profiling data Set Avg/Data Rate = ± 1 Hz Set Number of Samples = 0 Set Number of Cycles = N/A Set Cycle Interval = N/A Turn Logging ON/OFF = ON The sensor will collect data once per second and store collected data until the power is turned off.</p>
---	--

If the sensor is set up to collect data intermittently, as for a moored deployment, it may be in a low-power condition. It is not possible to communicate with the sensor in this condition.

1. To start communication again, disconnect the sensor's power supply for one minute.
2. Connect the power again and push **Stop Data** several times.
3. Select the *Meter Setup* tab. Refer to [Adjust options for data collection](#) on page 9.
4. Type **0** into the **Number of Samples** variable box.
5. Push **Set Number of Samples**.
6. Push **Store to Flash**.
The sensor operates continuously.

Make sure that the sensor operates continuously.

1. Select the *Raw Data* tab.
2. Push **Start Data**.
3. Let the sensor operate for 10 samples or more.
4. Push **Stop Data**.

2.6.3 Adjust views in plot data tab

The *Plot Data* tab in the host software lets the user see the data that the sensor has collected.



Button	Function	Description
1	Resume	Push to start or stop the data that shows.
2	Pause	The x-axis will stop.
3	Axes scroll	Move either axis up or down, or right or left.
4	Axes zoom	Move either axis up or down, or right or left.
5	Zoom out	Decrease the detail by 2x.
6	Zoom in	Increase the detail by 2x.
7	Zoom box	Draw a box around the data area to zoom all axes.
8	Cursor	Move the cursor bar to a certain data point.
9	Copy	Copy the current data plot to the host PC clipboard.
10	Save	Save an image of the current data plot to the host PC.
11	Print	Send a snapshot of the current data plot to a printer.

Enter the type of data to view from the drop-down menu above the black view area ($\mu\text{g/L}$, ppb, scattering, etc.)

2.7 Sensor maintenance

⚠ CAUTION

Do not use acetone or other solvents to clean any part of the sensor.

1. After each cast or exposure to natural water, flush the sensor with clean fresh water.
2. Use soapy water to clean any grease or oil on the optical face of the sensor. It is made of ABS plastic and optical epoxy and can be damaged if an abrasive cleaner is used.
3. Dry the sensor with a clean soft cloth.

2.7.1 Clean and lubricate bulkhead connector

Lubricate the contacts of bulkhead connectors at regular intervals with pure silicone spray only. Allow the contacts to dry before they are connected.

Make sure that the pins have no corrosion, which looks green and dull. Make sure that the rubber seals on the pins are not delaminated. Connectors should connect smoothly and not feel "gritty" or too resistant.

The manufacturer recommends 3M™ Silicone Lubricant spray (UPC 021200-85822). Other silicone sprays may contain hydrocarbon solvents that damage rubber.

DO NOT use silicone grease. **DO NOT** use WD-40®. The wrong lubricant will cause failure of the bulkhead connector and the sensor.

Section 3 Reference topics

3.1 Delivered items

- the *ECO* sensor
- a dummy connector and lock collar
- blue-tipped power connector and lock collar for sensors with internal batteries
- a plastic protective cover for the optical face
- a model-specific spare parts kit
- a stainless steel mounting bracket and hardware (Sensors that are depth-rated to 6000m and sensors with internal batteries do not have this bracket.)
- **On the CD:**
- this user manual
- the ECOView host software
- the device file or files for the sensor
- the characterization or calibration page for the sensor.

3.2 Calibration

The data from the sensor ranges from 0 to a logarithmic maximum of approximately 16000 counts. The manufacturer calculates PAR in units of $\mu\text{mol photons/m}^2/\text{s}^1$.

The PAR sensor uses a logarithmic fitting function to convert between output voltage and PAR. The relationship between PAR and voltage is given below.

Figure 2 PAR and voltage relationship in air and in water

$\text{PAR} = I_m \times 10^{\frac{x - a_0}{a_1}}$ <p>in water</p>	$\text{PAR} = 1.0 \times 10^{\frac{x - a_0}{a_1}}$ <p>in air</p>
--	--

Where

I_m is the immersion coefficient

a_1 is the scaling factor

a_0 is the voltage offset, typically 0

x is the voltage

3.3 Terminal program operation

Use Windows HyperTerminal® or other terminal program to operate sensors as an alternative to the host software.

Interface settings				
baud rate: 19200	stop bits: 1	data bits: 8	flow control: none	parity: none

3.3.1 Common terminal program operations

Command	Parameters	Description
!!!!	none	Stops data collected by the sensor. Lets the user to enter setup values. If the sensor is in a low-power mode, turn the power supply off for one minute, then turn the power on and push the "!" key 5 or more times.
\$ave	1–65535	The number of measurements that make up each row of collected data.
\$mnu	—	Prints the menu of setup values to the host PC screen.

Reference topics

Command	Parameters	Description
\$pkt	0–65535	Sets the number of rows of data that are collected between the specified time intervals.
\$run	—	Uses the current setup values to operate.
\$sto	—	Saves the desired setup values to the sensor's flash memory.

3.3.2 Terminal program operation for sensors with internal memory

Command	Parameters	Description
\$clk	24-hour time	Sets the time in the internal memory in the format hhmmss.
\$date	date	Sets the date in the internal memory in the format mmddyy.
\$emc	—	Clears the internal memory.
\$get	—	Reads data from the internal memory. Prints etx when it is complete.
\$int	24-hour time	Sets the time interval between sets of measurements the format hhmmss.
\$mvs	1 = ON; 0 = OFF	1 = the Bio-wiper is open. 0 = the Bio-wiper is closed.
\$rec	1 = ON 0 = OFF	1 = Turns on the sensor's internal memory. 0 = Turns off the sensor's internal memory.
\$rls	—	Loads the settings from the flash memory.
\$set	0–65535	Sets the number of rows of data that are output between low-power states.

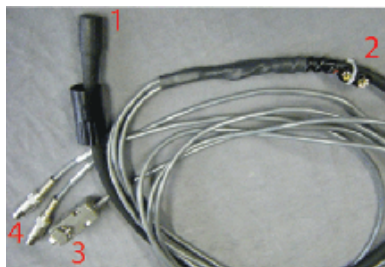
Section 4 Optional equipment

4.1 Test cable

Use a test cable to set up and test the sensor before deployment.



One analog output connector



Two analog output connectors



No analog output

1 six-contact connector	3 db-9 serial port connector
2 9-volt battery connector	4 RCA connector(s)

1. Connect the six-contact connector to the sensor.
2. Connect the 9-volt connector to a 9-volt battery. As an alternative, it can be connected to a regulated power supply.
3. Connect the db-9 connector to the host PC. Use a USB-to-RS232 adapter cable if necessary.
4. Use a digital multimeter (DMM) to see analog output (if applicable) from the sensor. The inside of the RCA is signal (red DMM probe) and the outside is ground (black DMM probe).

4.2 Internal batteries

⚠ WARNING

The pressure housing of the *ECO* sensor must be opened to replace the batteries. If done improperly, it could result in personal injury or death due to abnormal internal pressure as a result of flooding. It may not be possible to repair flooded sensors.

The manufacturer disclaims all product liability from the use or service of these sensors. The manufacturer cannot control the use of these sensors or choose qualified personnel to operate them, and therefore cannot take steps to comply with laws pertaining to product liability, including laws that impose a duty to warn the user of any dangers involved with the operation and maintenance of the sensors. Acceptance of these sensors by the customer shall be conclusively deemed to include a covenant by the customer to defend and hold the manufacturer harmless from all product liability claims arising from the use and servicing of these sensors. Flooded sensors are serviced at the discretion of the manufacturer.

⚠ WARNING

The sensor may be under pressure. Do not point it toward any part of the body to remove the vent plug or end flange.

⚠ WARNING

Replace the batteries in a clean and dry environment. Gases in the sensor can expand and push the pressure relief plug open. This will flood the sensor. Do not replace batteries in a cold environment and then deploy the sensor in a hot environment.

Flooded sensors are usually not serviceable. There is a small chance that the manufacturer can get the data that is stored in the sensor. Contact service@wetlabs.com for more information about flooded sensors.

Optional equipment

Six 9-volt lithium batteries supply power to sensors that have batteries. The sensors can also use alkaline or lithium manganese dioxide (LiMnO₂) batteries. Alkaline batteries supply about 1000 mA-hours of power. LiMnO₂ batteries supply more than 2000 mA-hours of power.

Note: *The nominal water temperature, sequence timing, sample periods, and other variables will change the use time of the sensor's internal batteries.*

4.2.1 Remove batteries

1. Clean any debris from the end flange.
2. Dry the sensor thoroughly.
3. Remove the dummy plugs if necessary.
4. Point the connector end flange down, away from the face.
 - a. Pull the vent plug loose.
 - b. If the sensor has an external thermistor, pull it loose.
5. Dry the vent plug (and the thermistor, if applicable).
6. Use needle-nose pliers to remove the monofilament from the end flange.

Figure 3 Pull monofilament from end flange



7. Remove the end flange from the pressure housing.
The jacking screws supplied as spare parts can be used to push the end flange off of the pressure housing, and then be removed.
8. Carefully disconnect each Molex[®] connector.
9. Remove the screw that holds the vent plug in the end flange.
10. Dry the end flange and the pressure housing seal areas.
11. Examine the O-rings on the vent plug and thermistor (if applicable).
Remove any O-ring that is damaged.
12. Apply a light coat of vacuum grease on a new O10 O-ring and put it on the vent plug or thermistor.
13. Put the vent plug into the top of the end flange.
14. If applicable, insert the thermistor into the end flange again.
15. Put the screw for the vent plug in the inside of the end flange.
The screw holds the vent plug in the end flange.
16. Carefully pull the white plastic loop to remove the battery pack from the pressure housing.
17. Remove the black plastic protectors from the ends of the long screws that secure the batteries.
18. Loosen, but do **not** remove, the retaining screws using a 1/4" slotted driver.
Do not remove both screws. If both of the retaining screws are removed, the result will be a pile of parts and the replacement process will not be easy.

Figure 4 Both retaining screws removed



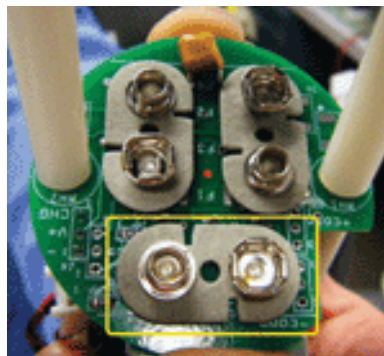
19. Disconnect each of the six batteries.

4.2.2 Replace batteries

Install new batteries in the sensor.

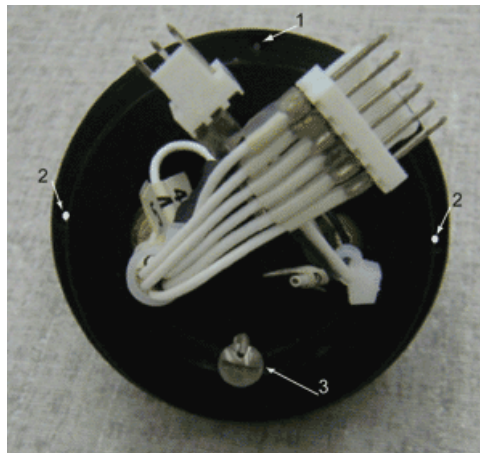
1. Tilt the battery board enough to connect the first battery in the contacts that are perpendicular to the other two.

Figure 5 Connect the first battery



2. Pivot the boards in the opposite direction to connect the other two batteries.
3. Connect the second set of the batteries.
4. Hold the assembly plates on top and bottom and tighten the screws.
The bottoms of the batteries may splay out. Make sure that the batteries do not extend beyond the circuit boards. If they do, the battery pack will scratch the sealing surface when it is put into the pressure housing again.
5. Install the bottom neoprene pad and the black plastic protective covers on the ends of the screws.
6. Remove and examine the 224 O-ring on the pressure housing for damage.
7. Use a new O-ring if necessary.
8. Apply a light layer of grease such as Dow Corning® High Vacuum Grease on the O-ring.
9. Put the battery pack into the pressure housing.
10. Attach the Molex® connectors.
Note that the dowel pin may be in the end flange or in the pressure housing.

Figure 6 Inside of end flange



1 dowel hole

2 through-holes for jacking screws

3 vent plug screw

11. Put the end flange onto the housing so that the wires are out of the way.
12. Align the dowel pin with the dowel hole in the end flange, not the jack screw holes, which go through the end flange.
13. Make sure that the wires are not pinched between the end flange and the pressure housing.
14. Make sure that the end flange is attached to the pressure housing.
15. Install the monofilament in the end flange.
- 16.
- 17.
- 18.
- 19.

4.3 Bio-wiper and copper faceplate

The Bio-wiper and copper faceplate help decrease bio-fouling during extended deployments. The Bio-wiper is controlled manually using a host controller, or it can work autonomously as pre-programmed before a deployment. The temperature and the depth at which the sensor is deployed will change the Bio-wiper cycle time.

4.3.1 Clean Bio-wiper and faceplate

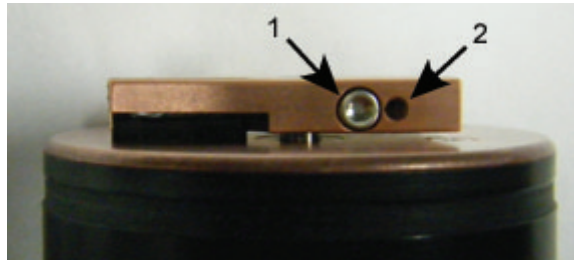
Sensors that have copper faceplates and copper Bio-wipers need to be cleaned at regular intervals to keep the copper effective as an anti-fouling aid. Remove the Bio-wiper and faceplate from the sensor to clean them.

NOTICE

Do not twist the Bio-wiper or the Bio-wiper shaft by hand. Push **Open Shutter** and **Close Shutter** in the host software to turn the Bio-wiper. Turning by hand will damage the Bio-wiper motor.

1. Disconnect the sensor from any power source.
2. Use the manufacturer-supplied 3/32" hex key to loosen the screw that holds the Bio-wiper to the sensor.
If necessary, insert the manufacturer-supplied jacking screw into the expander hole to loosen the Bio-wiper. *PAR sensors do not have an expander hole and do not ship with jacking screws.*

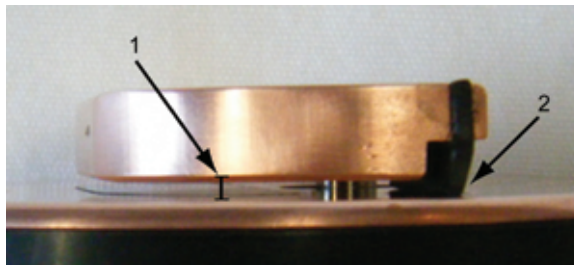
Figure 7 Bio-wiper screw holes



1 the screw in the clamping hole	2 the expander hole
----------------------------------	---------------------

3. Lift the Bio-wiper off of the faceplate.
4. If used, remove the jacking screw.
5. Use a small Phillips screwdriver to remove the screws that attach the faceplate to the optics face.
6. Keep the screws.
7. Clean the Bio-wiper and faceplate with soapy water.
8. Rinse and dry thoroughly.
9. Use a Scotch-Brite® or similar pad to buff the Bio-wiper and faceplate until they are shiny.
10. Use an isopropyl alcohol-saturated cotton swab to clean the Bio-wiper shaft and the shaft hole.
11. Make sure the Bio-wiper and faceplate dry completely.
12. Attach the faceplate again.
13. Make sure the screw used to attach the Bio-wiper is in good condition.
The 3/32" hex key must fit into the screw's socket.
14. If the screw is damaged, use a new screw from the spare parts kit that the manufacturer supplies with the sensor.
These screws are 4-40 x 3/8" 316 stainless steel and are treated with anti-seize.
15. Insert a jacking screw into the expander hole of the Bio-wiper. Turn it slowly until the Bio-wiper goes onto the shaft easily.
16. Put the clean Bio-wiper over the shaft but do not twist the Bio-wiper.
17. Make sure to remove the jacking screw before tightening the 3/32-inch clamping screw.
18. Use the commands in the host software to turn the Bio-wiper into the closed position.
The Bio-wiper covers the optics.
19. Set the clearance between the Bio-wiper and the faceplate to approximately 0.6 mm.
Note: If the Bio-wiper is has too much bend because it is too close to the faceplate, the motor will use too much current. If it is not close enough to the faceplate, the Bio-wiper will not keep the optics clean.

Figure 8 Bio-wiper clearance



1 Bio-wiper clearance from faceplate

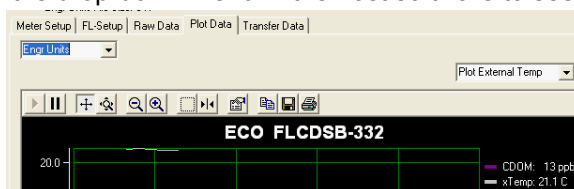
2 Bio-wiper flex

20. Use the 3/32" hex key to tighten the screw. Do not over-tighten the screw.
21. Turn on the sensor to make sure that the Bio-wiper rotates correctly.
The Bio-wiper must rotate 180 degrees and uncover the optics before they come on.
The Bio-wiper will then rotate 180 degrees to cover the optics after they come on.

4.4 External thermistor

The calibration coefficient value for the thermistor is on the sensor's characterization page that ships with the sensor. The thermistor gives temperature output in counts. Do one of the methods below to change counts to engineering units.

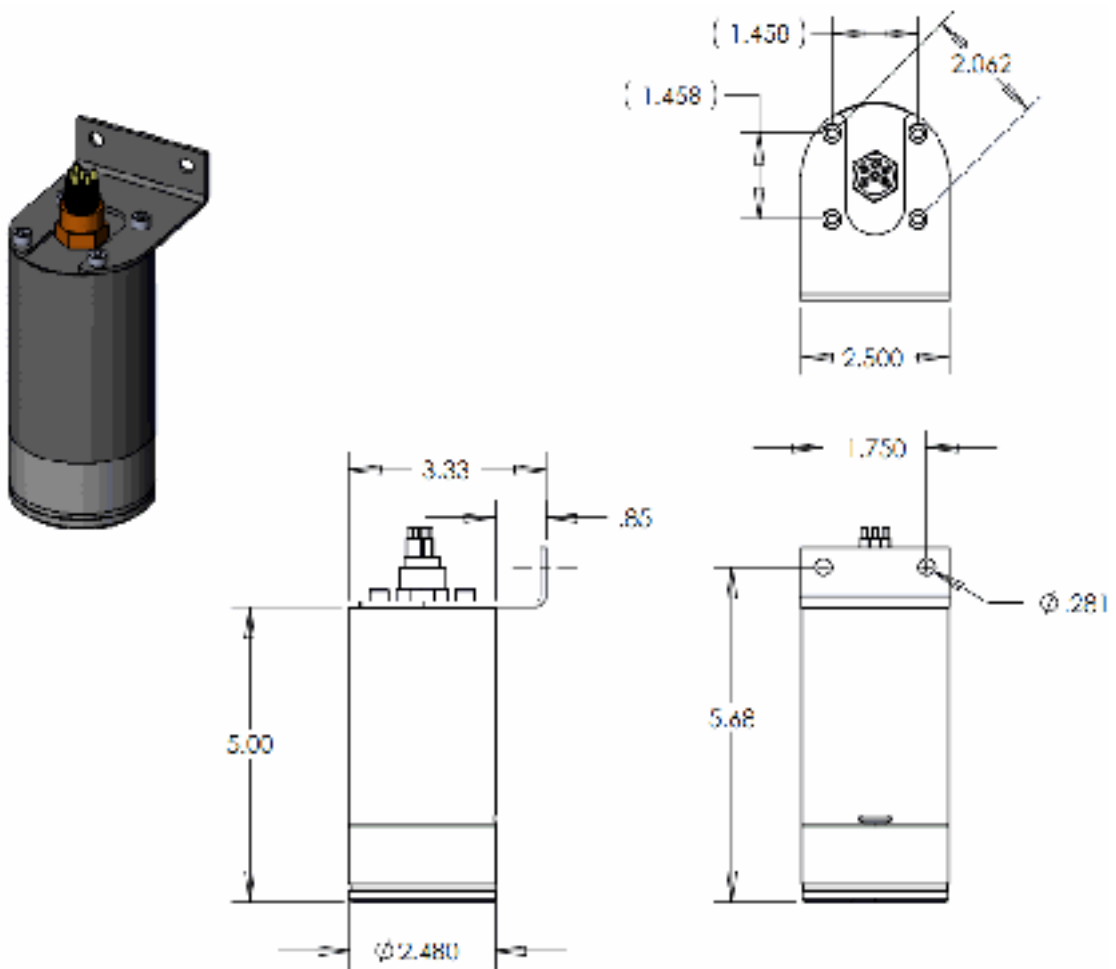
1. Use the drop-down menu in the host software to see the thermistor output in °C.



2. Use MATLAB, MS Excel or other software to solve for:
Temperature, °C = (Output × Slope) + Intercept

4.5 ECO mounting bracket

The details of the mounting bracket for the *ECO* sensors are shown below. The mounting bracket is not installed on sensors with internal batteries or those rated to 6000 m depth.



Section 5 General information

Revised editions of this user manual are on the manufacturer's website.

5.1 Warranty

This sensor is warranted against defects in materials and workmanship for one year from the date of purchase. The warranty is void if the manufacturer finds the sensor was abused or neglected beyond the normal wear and tear of deployment.

5.2 Service and Support

The manufacturer recommends that sensors be sent back to the factory annually to be cleaned, calibrated, and for standard maintenance.

Refer to the website for FAQs and technical notes, or contact the manufacturer for support at:

support@sea-birdcoastal.com

Do the steps below to send a sensor back to the manufacturer.

1. Contact the manufacturer for a Return Merchandise Authorization (RMA).
Note: *The manufacturer is not responsible for damage to the sensor during return shipment.*
2. Remove all anti-fouling treatment from the sensor before sending it back to the manufacturer.
Note: *The manufacturer will not accept sensors that have been treated with anti-fouling compounds for service or repair. This includes tri-butyl tin, marine anti-fouling paint, ablative coatings, etc.*
3. Use the sensor's original ruggedized shipping case to send the sensor back to the manufacturer.
4. Write the RMA number on the outside of the shipping case and on the packing list.
5. Use 3rd-day air to ship the sensor back to the manufacturer. Do not use ground shipping.
6. The manufacturer will supply all replacement parts and labor and pay to send the sensor back to the user via 3rd-day air shipping.

5.3 Waste electrical and electronic equipment



Electrical equipment that is marked with this symbol may not be disposed of in European public disposal systems. In conformity with EU Directive 2002/96/EC, European electrical equipment users must return old or end-of-life equipment to the manufacturer for disposal at no charge to the user. To recycle, please contact the manufacturer for instructions on how to return end-of-life equipment, manufacturer-supplied electrical accessories, and auxiliary items for proper disposal.

Sea-Bird Coastal
13431 NE 20th Street
Bellevue WA 98005 U.S.A.
sales (425) 401-7653
support (425) 401-7654
support@sea-birdcoastal.com
www.sea-birdcoastal.com

