



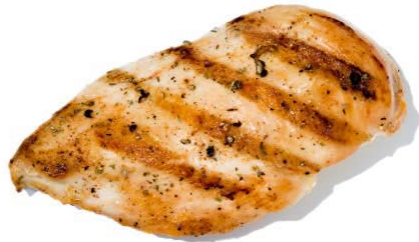
**Eco-250™ User Manual**  
**A FOOD DEHYDRATING/COMPOST MACHINE**

# What cannot be put into the Eco™?



# What can be put into the Eco™?

Produce/Fruits, Cooked Meat,  
Chicken & Fish are OK



## SUPPLIES YOU WILL NEED TO GET STARTED

1. A trash can with lid and food scraper



2. 1 or 2 plastic bins to capture the finished product from machine



# Getting Started

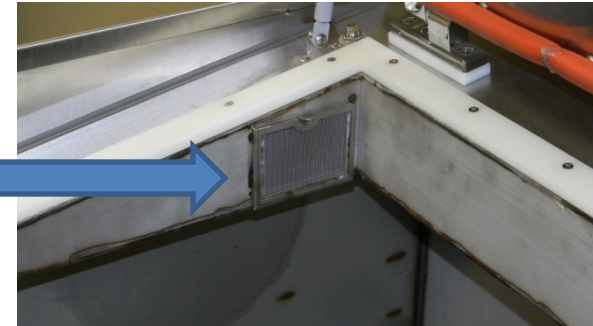
1. Filter is located on the top left corner of Eco 66™

1



2. Lift open the top cover, and lift screen on left side.

2



3. Remove filter and rinse with water if necessary or at least every 2 days

3



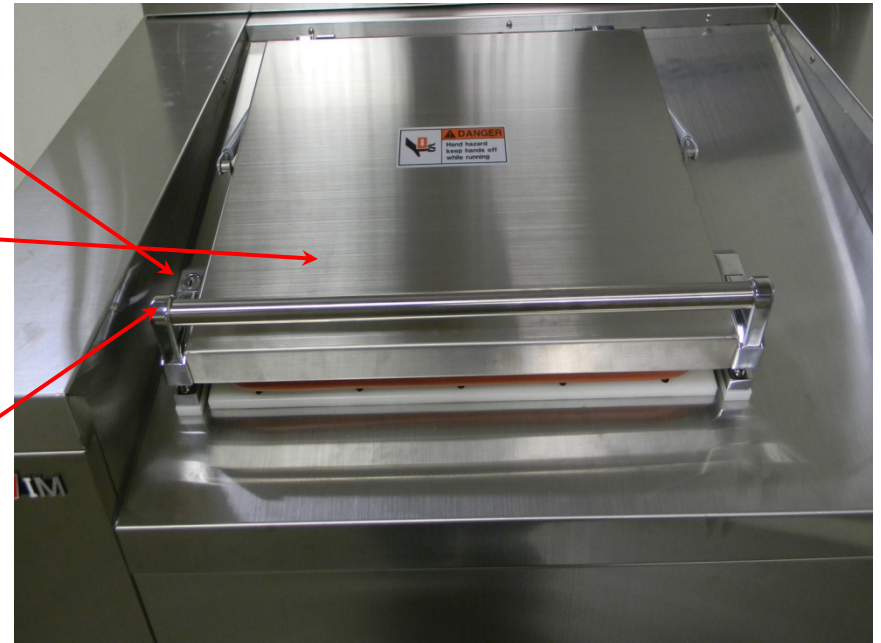
# ADDING FOOD WASTE

Unlock top door 1

Open Lid 2

Insert food 3

Lock top door 4



# Starting the Eco-250

Use black knob to turn on power

1

Push Start button.

2



# Let it Run

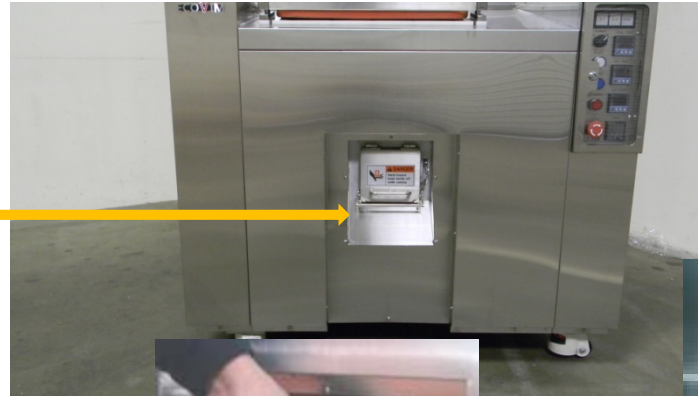
- Lock the glass door on the Control Panel
- Make sure plastic bin is under opening to catch debris
- Let machine process for 14 hours and empty bin into normal trash





# To Empty

Open the lower discharge door by pulling out and up on the handle



Press the discharge button



# When Empty

Close the discharge door and  
Make sure that the latch closes  
And locks the door shut



Then unlock the top input lid, fill the machine and start the cycle again

# Before you call for help

Before calling for help please make sure you  
Write down the upper and lower settings for the  
displays as seen on the right.

Tank Temp

Oil Temp

Air Temp

Timer

Is the end light on?

IS the E-1 or E-2 Light on?



# Installation Do's & Don'ts

This unit while outside, is protected  
From the elements and has access  
Rear panel electrical



# Don't

The unit below is exposed to the elements  
And the one on the right cannot be serviced  
Because the access door, on right, is blocked.



# The End

- 95% of issues are operator problems
  - Accidentally changed values on controllers
  - Emergency stop button depressed
  - Electrical fuse blown
- Make sure you get name and address of location, contact, etc. and settings of all front panel controller displays.
- **Use of more than 12 to 15% paper products will cause the machine to end its cycle early.**
- **This will cause wet output and unnecessary service calls.**