

This handbook helps you quickly master and use this Digital Touch Pen series; the specific user's guide has been clearly explained in our CD-ROM that we enclosed as for the product reference.

The MyScript Stylus 3.2 converts natural handwriting into digital text in real time. Write in MyScript Stylus 3.2 with a touch screen or tablet and your writing becomes text in the active document (text editor, spreadsheet, calendar, mail editor and so on).

You can write text in several styles, write numbers, symbols and even open a keyboard to enter text or mathematics. You can correct or delete text as you write.

1. Product Instruction

1.1 Brief description

The Digital Touch Pen is a new type input device, combining natural handwriting trace, the storage of electronic handwritings and mouse operation. It can be used in desktop, Net-book and laptop computers, and also can be used without a PC. Users can write on PowerPoint, Word, Excel, One Note, and Adobe Acrobat and so on, realizing the function of the authentic handwriting input, comment, signature, drawing, editing, storage and other features in electronic documents.

1.2 Application description

The MyScript Stylus 3.2 means handwriting input in here, Features below refers always to release 3.2 of MyScript Stylus,

The MyScript Stylus 3.2 converts natural handwriting into digital text in real time. Write in MyScript Stylus 3.2 with a touch screen or tablet and your writing becomes text in the active document (text editor, spreadsheet, calendar, mail editor and so on).

You can write text in several styles, write numbers, symbols and even open a keyboard to enter text or mathematics. You can correct or delete text as you write.

MyScript Stylus 3.2 recognizes gestures to improve the user experience: Carriage return/Insert space/Backspace/Split word in 2 words/Merge 2 words/Deletion of characters via: cross-out, strike-through, scribble-out.

The software Interface and Help files in almost all the supported languages:

Arabic, Chinese (Simplified/Traditional), Danish, Dutch, English (CA/UK/US), Finnish, French (CA/FR), German, Greek, Hungarian, Italian, Japanese, Korean, Norwegian, Polish, Portuguese (BR/POR), Russian, Spanish (SP/MEX), Swedish, Turkish etc.

System requirements:

CPU: Minimum Pentium 1 GHz

Recommended RAM: 512 MB

Operating Systems:

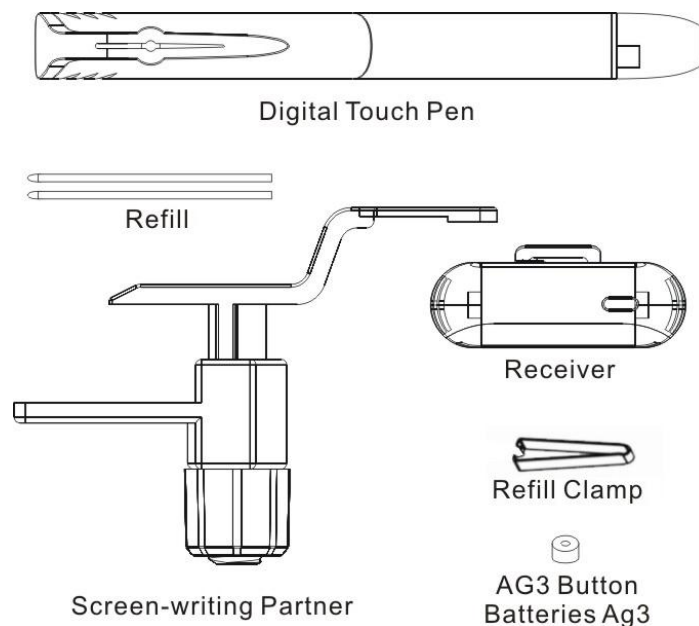
Microsoft Windows Vista, Windows XP, Seven

MAC OS (Intel processor only) Hard Disk Space: 100 MB

Screen Resolution: 1024 x 768 minimum

1.3 Product Composition

The Digital Touch Pen consists of the Receiver, Pen, USB Cable, User manual, CD-ROM, Refill, Refill Clamp, Screen-writing Partner and AG3 Button Batteries.

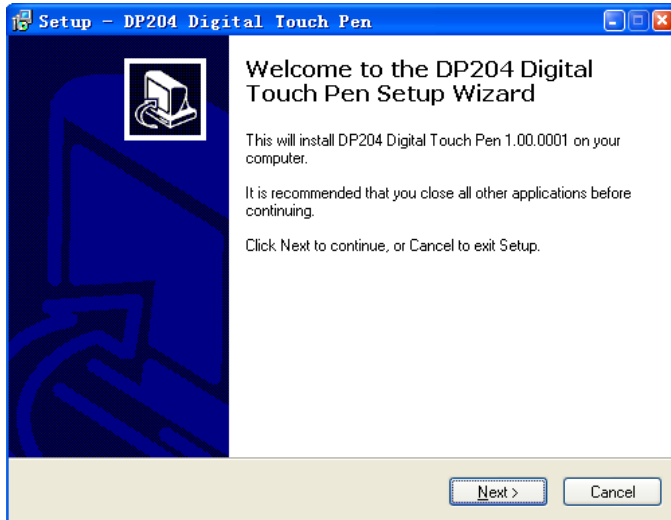


2. Installation Guide

2.1 Installing the Digital Touch Pen Application Software

Insert the CD-ROM to the computer, the installation program will automatically run, and follow the tips to install; it spends appr.3 minutes, and users can choose running the application immediately.

This is software install interface of DP100, and it is same with the DP204, resulting in what is shown below picture for your reference.

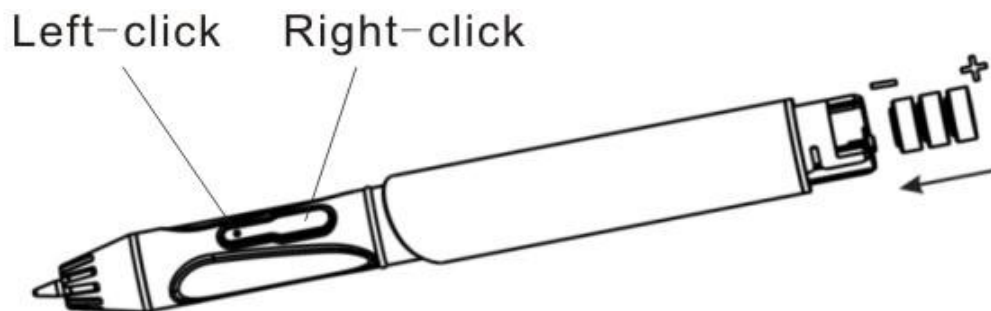


2.2 Installing the Digital Touch Pen Hardware

a>Take out the writing pen:



b>Pull out the cap of the pen and press into 3 button batteries:



c>Insert the cartridge in the pen:



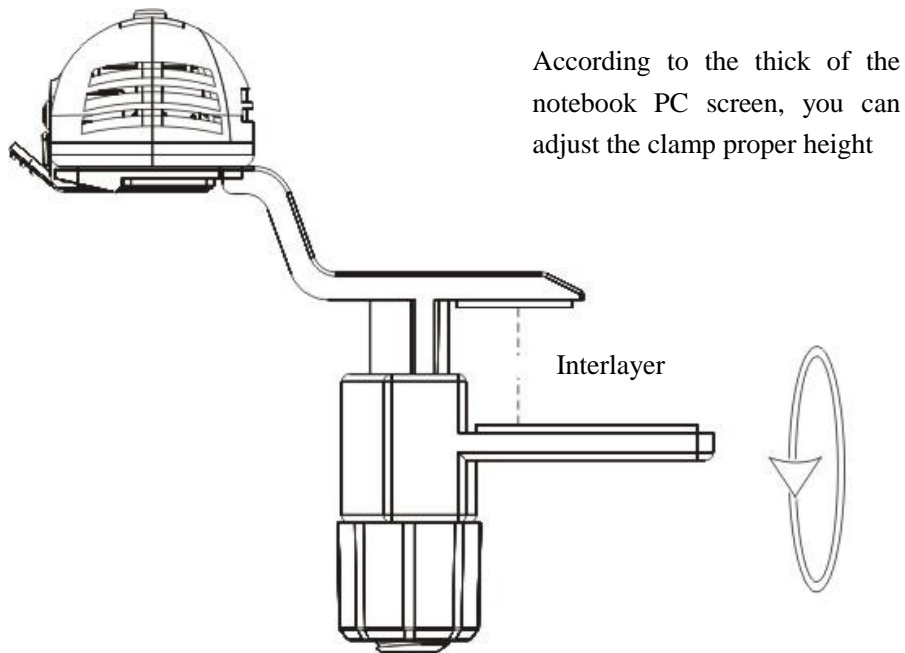
Tips: Please use the plastic refill for screen and ballpoint refill

for paper. Connect the receiver to the computer with USB cable.

2.3 Installing the screenwriting partner and Receiver

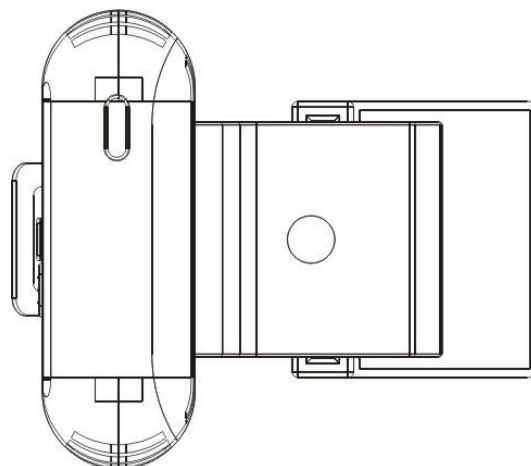
You can Install the screenwriting partner and Receiver on the left, right or top, we advice you to put it on left, for it proves the more satisfactory results obtained. First install on the PC display and put the receiver in the screen partner, after that we connect the PC with USB line.

Installation Method for Receiver in the notebook PC



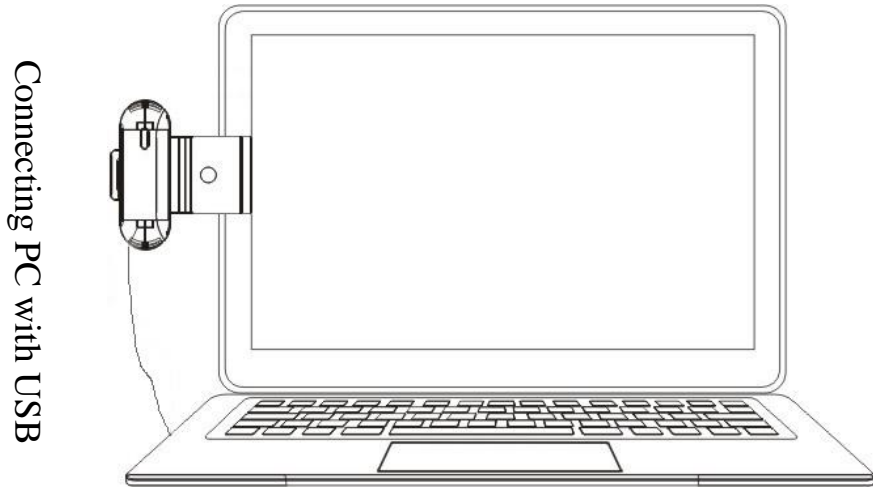
Put screen parter following the direction of the arrow inward rotate 90 °CCW

Below picture as show:



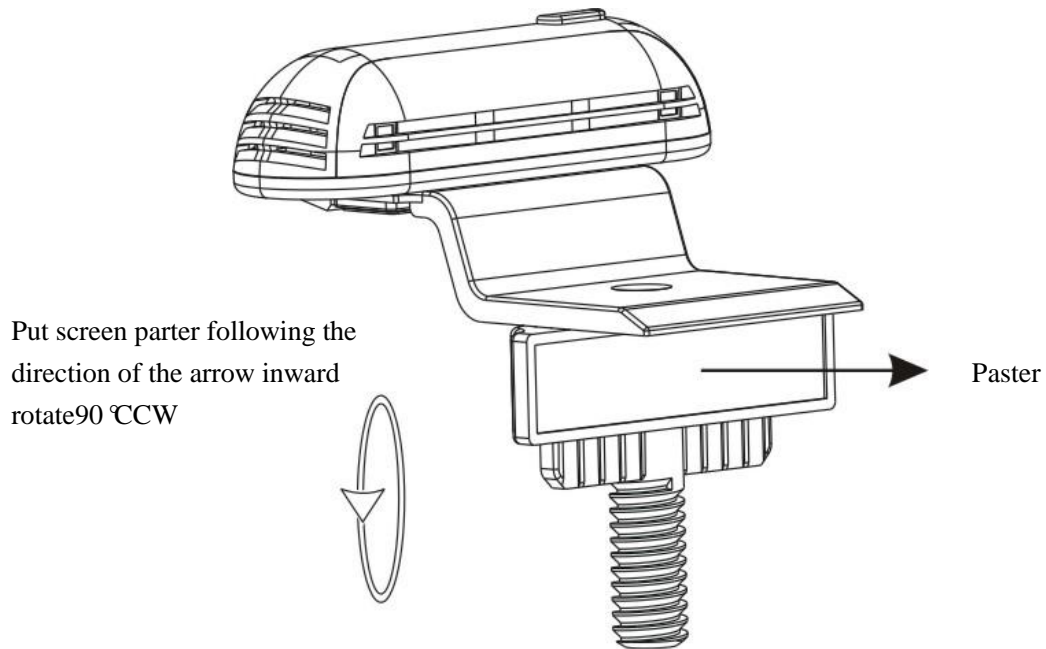
Make the receiver fix to the left of screen (pick up the signals in the best place),

On show as below picture:



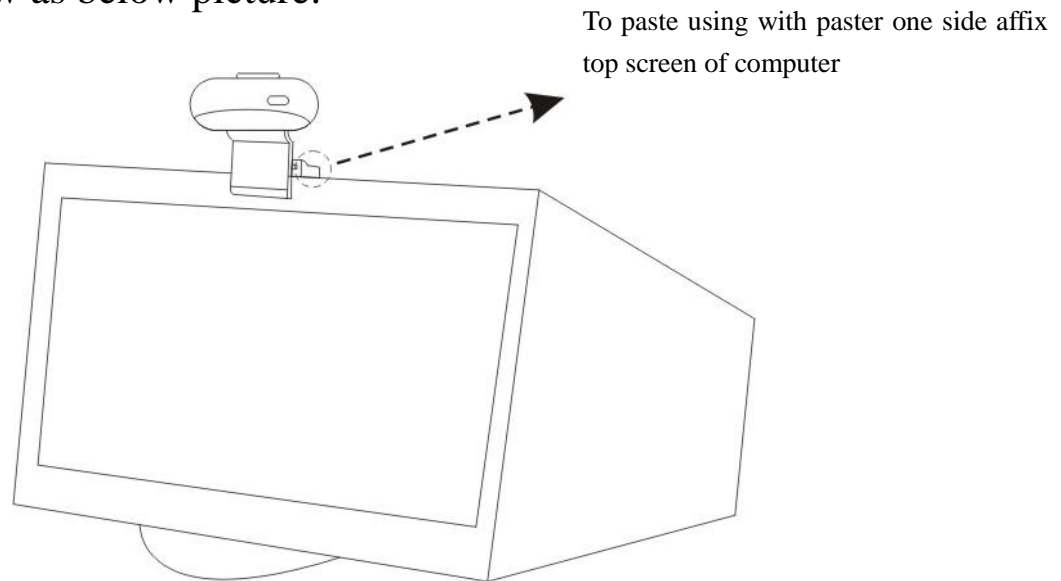
Finishing Installation

Installation Method for Receiver in the Tablet PC and Desktop PC






Connecting receiver in the screen partner, paster in top of the screen of the desktop PC and tablet PC.

On show as below picture:



Finishing Installation

2.4 How to judge whether the Digital Touch Pen works normally or not

The Digital Touch Pen control center icon in system taskbar is  or , the red light on the receiver is on or twinkling when handwriting pen is used or the mouse button on Digital Touch Pen is pressed, the red light on the receiver is always lighting. Satisfying the above conditions indicates that Digital Touch Pen works normally. If the icon is , it indicates that receiver and computer are disconnected.


2.5 Start up Digital Touch Pen software

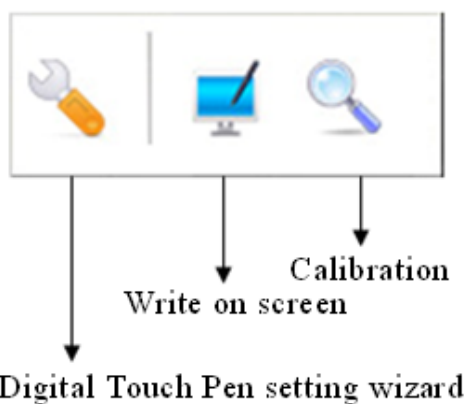
The Digital Touch Pen software will automatically start up with computer. If you want to activate it manually, following the sequential steps: Click system taskbar(start) → (program) → (Digital Touch Pen software)→ (Startup Digital Touch Pen).



DP100工具条

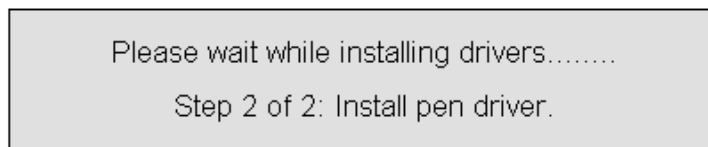
DP100 Toolbar

Click the button  will enter the following menu display: Select it and click each icon button into the corresponding operation for you.

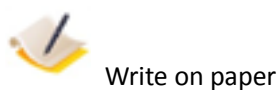
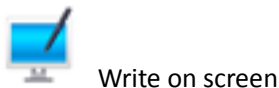


★ Sometime when connect the PC and the receiver to start

working, the screen will appear below picture prompt content, You need wait a minute as a system of automatic installation is completed, then you can start using the digital touching pen. Notes: This process not every time appears.





When you are using the digital touch pen, In the screen bottom task bar of the computer appear working state tips:

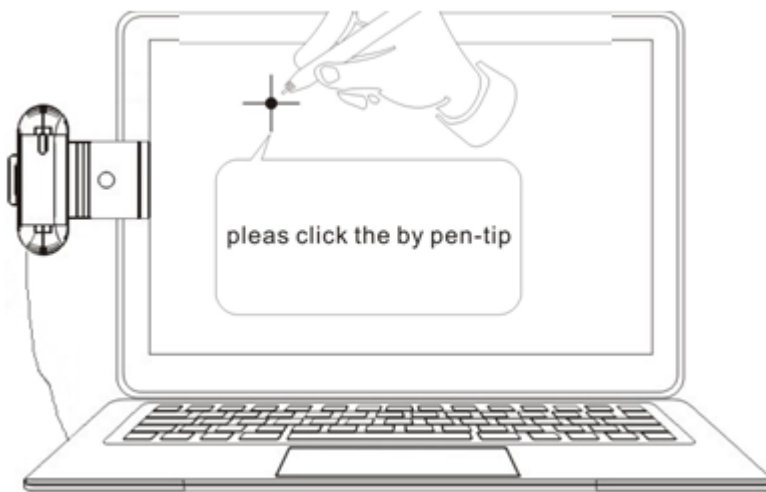


Notes: In the Software installation process, If have anti-virus software to prevent normal operation, please click allow installation.

3. Ways of using the Digital Touch Pen

3.1 Screen Calibration

Screen calibration before using, first click the icon  with the left key of the Digital Touch Pen and click the icon  in the same way; it will display the following interface. Click the position point on the screen one by one according to prompt and click “Apply” after finishing it; click “Reset” to make position again.



Actual pictures on the screen of the PC as below:





3.2 Screen writing mode

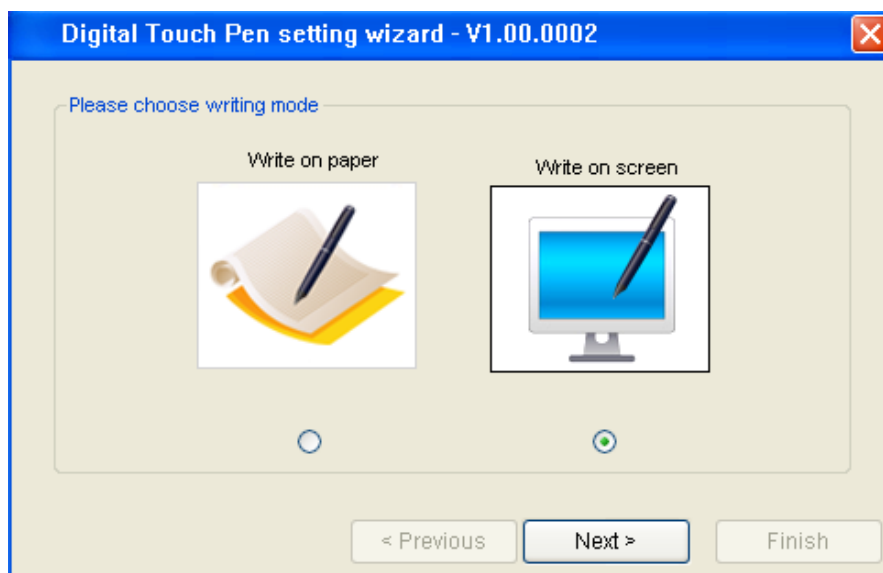
Place the receivers on the left side of the screen. Change for a “plastic ball”. Write and make computer operation on the computer screen directly, so you can use ordinary computer as writing computer.

Similarly, you can use any plain medium (such as paper,

desktop, glass) for writing.



If you want to write on the paper, make the following Settings: first click the icon  with the left key of the Digital Touch Pen and click the icon  in the same way; the screen will display below picture, you can choose the write type.



3.3 Handwriting input with MyScript Stylus 3.2

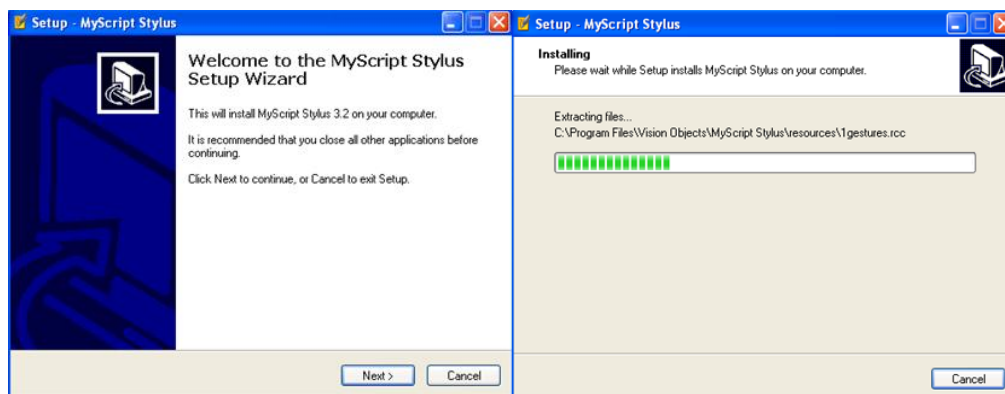
3.3.1 Introduce and software Installation

Write in MyScript Stylus 3.2 with a touch screen or tablet and

your writing becomes text in the active document (text editor, spreadsheet, calendar, mail editor and so on).


You can write text in several styles, write numbers, symbols and even open a keyboard to enter text or mathematics. You can correct or delete text as you write.

You should be installed MyScript Stylus 3.2 software before use, The software is in the CD driver, the installation steps as below picture shown:



3.3.2 Activating the application

Your application was delivered to you with an activation code. You must register the code on the computer where you intend to use the application, in order for it to work. The codes have been clearly written in our Card that we enclosed, you can find it. One code can only be installed in one computer.

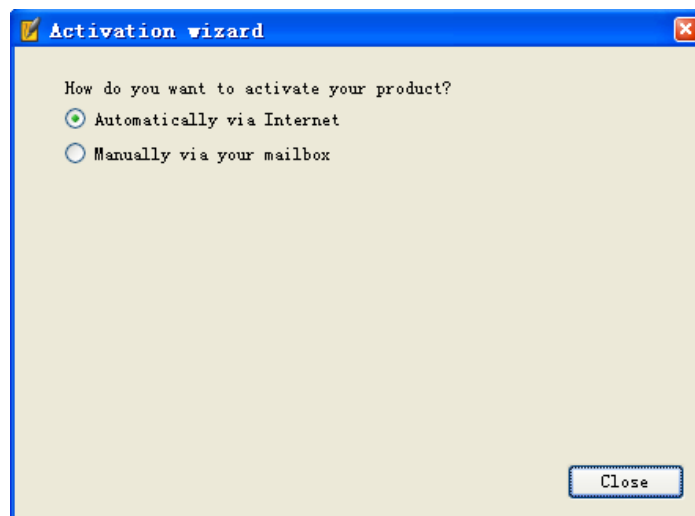
To register your application, click the  button and choose the Registration option. This opens a dialog box. To activate the application, click the Activate button. You will be asked how you want to activate: Automatically via Internet or manually via

your mailbox. Wherever possible, you should choose the automatic activation. Automatic activation: Choose the Automatically via Internet option and click Next. Two kinds of registration shall be connected network mode in the network so that it can be registered successfully.

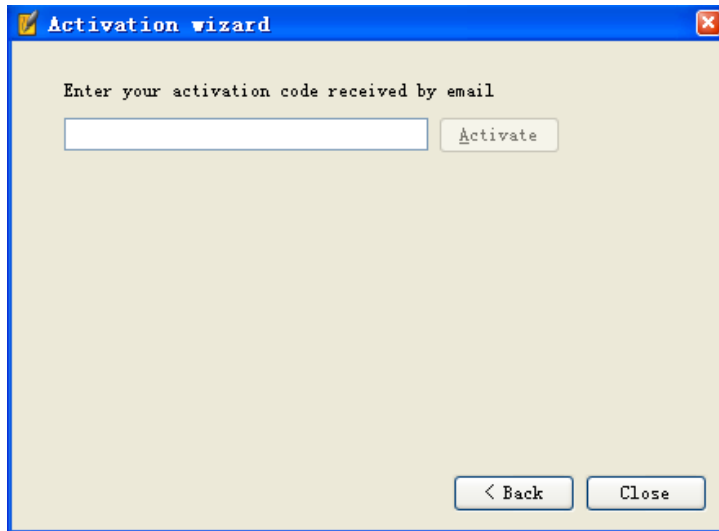
You are prompted to enter your activation code: type it in and click the Activate button.

Your license information will be sent over the Internet. If all goes well, your application will then be active. Please note that no confidential information is sent. Manual activation: If for any reason you cannot activate via the Internet directly, you will need to choose the manually via your mailbox option.

1. Activation wizard, please select the first option.

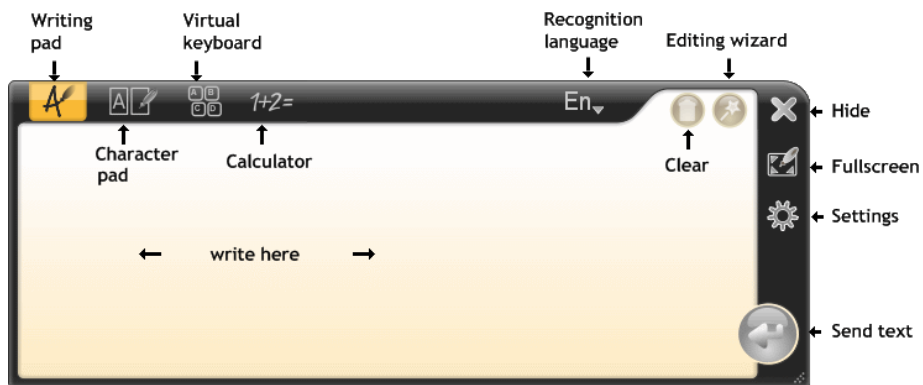


2. The codes have been clearly written in our Card that we enclosed, input activation code to the blank.

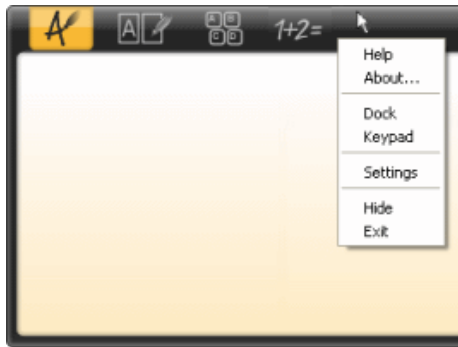


3.3.3 Interface

After activate software completion, you can use the handwritten input function normally, the software operate interface as below:







● Right-click the application window for a shortcut menu containing various options:

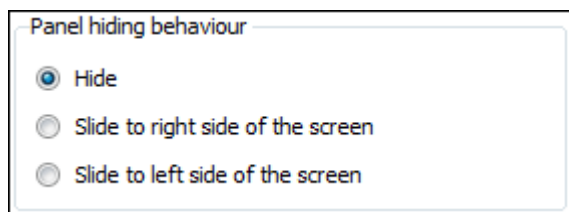




3.3.4 Hiding and waking up MyScript Stylus

● In panel mode


- To hide MyScript Stylus, click its  button.
- To wake it up and bring the panel back to the window, click the quick access floating icon  that pops up as soon as you click in a text editing area.
- You can also click the  icon on the Windows taskbar.

The hide function has different options available in the Settings dialog box (, Settings option, Panel Access tab): for example you can choose to reduce the window to a bar on either edge of the screen:





● You can enable/disable the quick access floating icon  from the Settings dialog box(, Settings option, Panel Access):

<input checked="" type="checkbox"/>	Display quick access button
<input type="checkbox"/>	Fade panel when not in use
<input type="checkbox"/>	Show keypad when writing area is empty

● You can also fade the panel when not in use from the Settings dialog box(, Settings option, Panel Access):


<input type="checkbox"/>	Display quick access button
<input checked="" type="checkbox"/>	Fade panel when not in use
<input type="checkbox"/>	Show keypad when writing area is empty

● In fullscreen mode

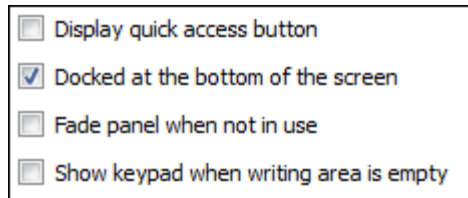
- To wake up Stylus in fullscreen mode, you can click in a text editing area so that the  cursor appears on the screen, or click the  icon on the taskbar.


3.3.5 Docking the MyScript Stylus window

You can make the MyScript Stylus window stay at the bottom of the desktop: this is called "docking".

- , Panel Access tab, activate the Docked at the bottom of the screen option.


The MyScript Stylus window stays at the bottom of the screen.

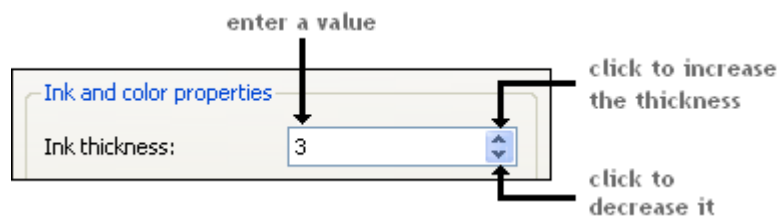


- To make it a floating window again, , Panel Access tab, deactivate the Docked at the bottom of the screen option.

3.3.6 Setting the ink/writing area options

Changing the ink thickness

- Open the settings by clicking the  tool.
- Under the Ink tab, use the Ink thickness option.



- Click OK.


Ink set to a thickness of 1:

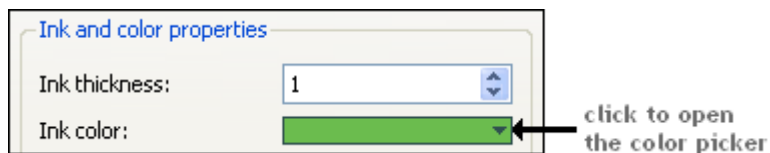


Ink set to a thickness of 8:




Changing the ink color

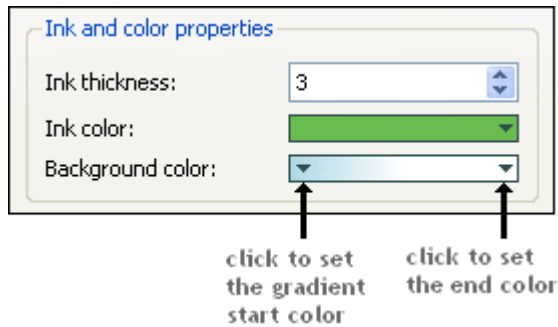
- Click .
- Under the Ink tab, use the Ink color box.



- In the color picker, choose a color.
- Click OK.

Changing the input area background color


- Click .
- Under the Ink tab, use the Background color box.

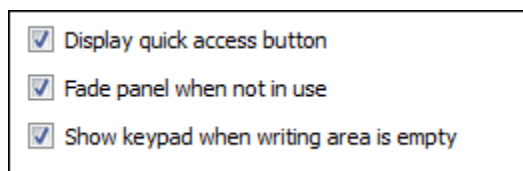



- Confirm with OK.

● Showing the keypad

The keypad for editing text is open by default but you can turn it off if you wish.


- Click .
- Under the Ink tab, use the Show keypad when writing area is empty option.

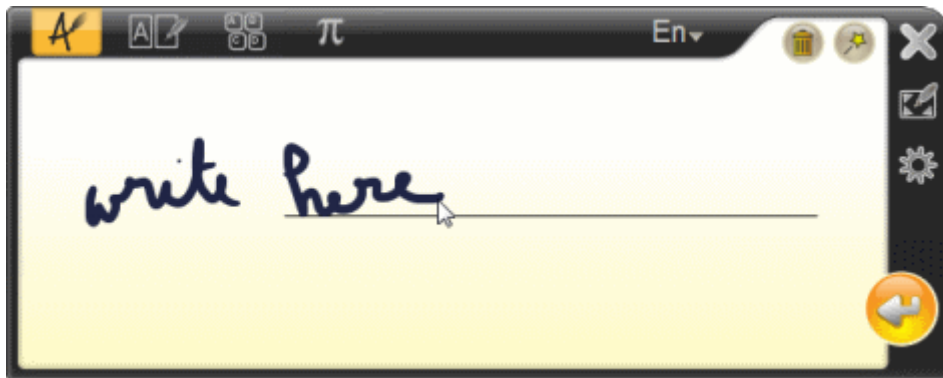



Note that in fullscreen mode, you can use the  button on the mini-toolbar to close and open the keypad.

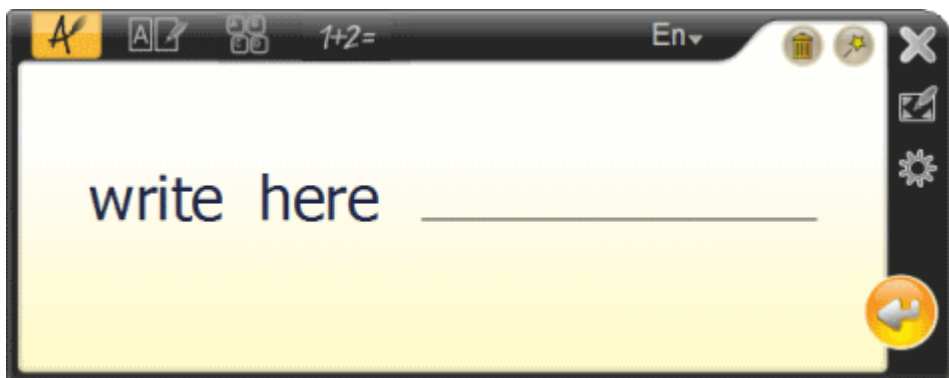
3.3.7 Writing


3.10.7.1 Writing in panel mode

- If you want to write naturally, click the  button.
Write in cursive (joined-up) style; it does not matter if you join up every letter, just remember to space words well.



- As you write, guidelines appear, to help you and your text is converted as an animation, before being sent to the application, automatically, or with the  button




If you want to write proper names, acronyms, abbreviations, or unusual text like Web or e-mail addresses, use the  letter-by-letter mode.


Remember to add words to your personal dictionary, if MyScript Stylus often gets them wrong.

- You can edit the text while you are writing: see the "Correcting natural writing" page.


3.3.7.2 Writing in full screen mode



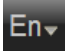
In fullscreen mode, you can write on any part of the screen. The results are displayed as an animation and then appear in your document.


- To open fullscreen mode, click the  button on the main Stylus window.

By default, pen mode is active: a pen cursor  appears on the screen: drag with this cursor to write wherever you like. Once you start writing, a small toolbar appears.





As you write, the ink is converted as an animation, before being sent automatically to the text area (or manually with the  button that appears on the mini-toolbar). You can use gestures (see the "Correcting natural writing" page) or the editing wizard


 to change the ink you have written. There is also the  button to erase the ink you have just written or the  button to change the writing language

- To use pointer mode, click the  button.

Buttons appear so you can use common keys, such as the space, tab etc. The cursor behaves as a mouse pointer, and not as a pen.



- To return to pen mode, click the  button on the mini-toolbar.
- To leave fullscreen mode, closing the mini-toolbar and returning to the standard MyScript Stylus window, click .


The  button only hides the application: click a text area to bring it back on the screen.



3.3.7.3 Writing difficult text

Some text is difficult to recognize. This includes:






- proper names (of people, companies, products etc.),

- acronyms,
- abbreviations,
- Web site or e-mail addresses,
- codes of various types.





When you want to write these kinds of text, use  in panel mode.

- Click the  button and choose the  mode to write in a mixture of letters, numbers and symbols.
- Write your text using one box for each character. You cannot write in a cursive style (in joined-up writing).





- To change to another mode, click another button ( to write only letters,  to write digits or  to write symbols or  to write naturally).
- Remember that many words could be easily recognized in  mode if you simply add them to your dictionary.

3.3.7.4 Writing numbers and symbols

- If you want to write numbers, click the  button and then click .
- If you want to write symbols or complex punctuation, click the  button and then click .


The writing area will display individual boxes: write each number or symbol in one box. You cannot write in a cursive style (in joined-up writing).




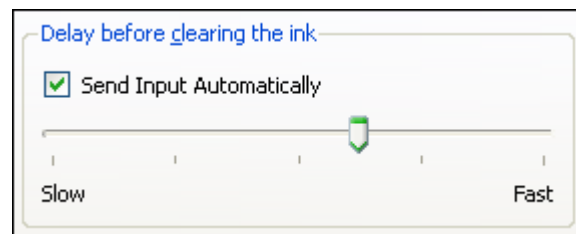
- To write normal text again, click  to write naturally, or  to write letters in boxes.

Sending recognized text

When you make a short pause in writing, MyScript Stylus guesses that a word is finished and conversion can take place.



- By default, the recognized text is kept in MyScript Stylus until you click the  button.

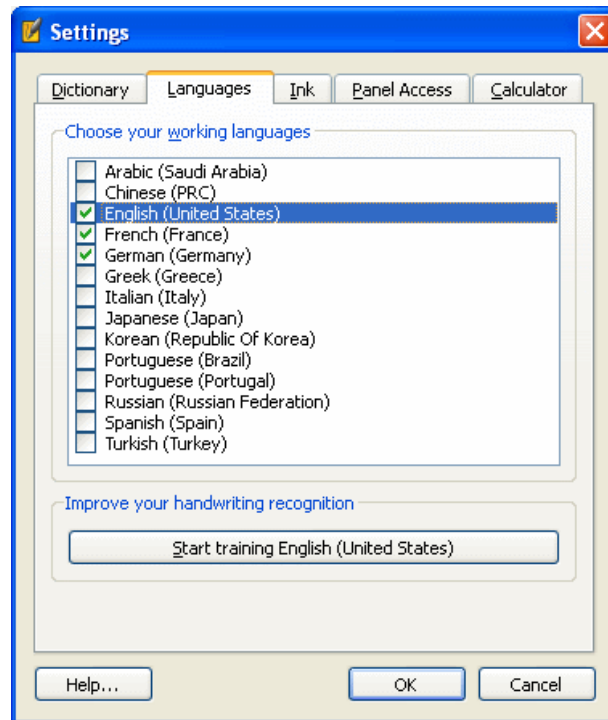
- You can decide to send the recognized text automatically:
 - Click .
 - Under the Ink tab, in Delay before clearing the ink, check the Send Input Automatically option.
 - move the cursor towards Slow, to leave more time before conversion, or towards Fast to clear the screen more quickly.



- Click OK.

3.3.7.5 Changing the writing language

- Click , Languages tab to open the settings.
- Choose a short list of working languages: you will be able to see your list the next time you click .




- Click OK.
- When you want to write in a different language, click to open its list and choose the language you need to write in.

3.3.7.6 Tips for writing

Follow these tips for better writing conversion.

- Space letters and words comfortably, avoid very cramped words, or spaces that are too large within words.
- If you use multiple lines, space the lines well and write in a straight line.
- Use the correct content type for what you are writing:

 natural cursive writing.

In



mode:



letter-by-letter writing (use this for proper names, abbreviations, acronyms etc).



numbers.



symbols, complex punctuation.

- If MyScript Stylus seems to find it hard to convert certain words, add them to your personal dictionary.



3.3.7.7 Using the keyboard



- To open the keyboard, click the  button.

A small keyboard like this appears:



This keyboard is in the same language as you are writing in.

There is a Standard keyboard , or a Math keyboard  that you can use to enter maths and scientific equations.

- Use your stylus or pointing device to "click" each key to enter text.
- To close the Keyboard, click another writing mode button ( or )

3.3.8 Inserting math's symbols



A special keyboard lets you insert maths symbols so you can write maths operations in a document.

- Click the  button and then click the  button.

This keyboard opens:




- Click each key to write your maths operation in your document.

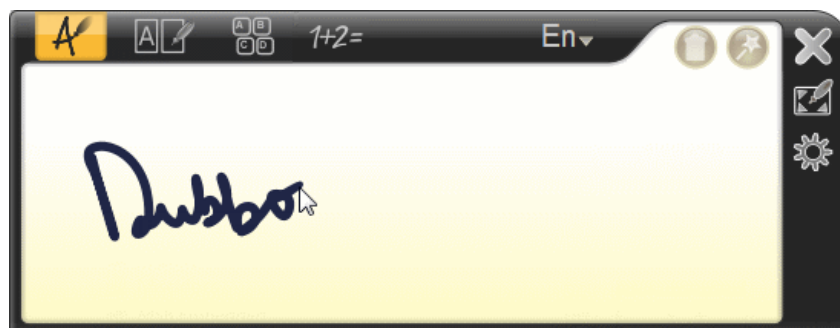
- Switch to another mode ( or ) to close the keyboard.

3.3.9 Editing

3.3.9.1 Correcting natural writing

You can use these actions when you write in  mode or when you write in fullscreen mode.

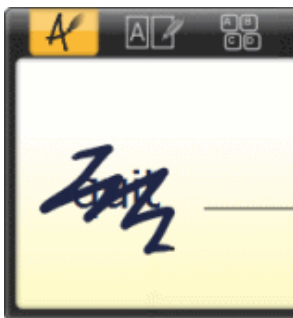
- When you write, Stylus converts your text in its window, as an animation.



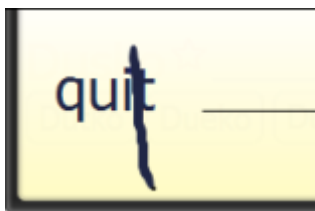
- If the suggested conversion is not correct, click the word to see alternatives:



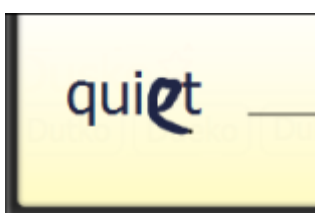
- Click the alternative that you want to choose.
- If the suggestion is correct and you want to add it directly to your personal dictionary, click the red star icon ☆.
- You can also edit the animated text to edit what you have just written: scribble out a word, or a letter, or part of a word to delete it:




- You can also perform other tasks like inserting a letter:




- First use a bar to break the word then insert.




- If you want help on correcting quickly, click the  icon: editing hints appear in the text and you can just click them to delete words, add or remove spaces etc.



- If you want to be able to correct the word letter-by-letter, click the  button.
 - You can also correct the text once it has been sent to your document too (see the Correcting text once it has been sent page).
- Remember to add words to your personal dictionary, if MyScript Stylus often gets them wrong.

3.3.9.2 Correcting in letter-by-letter modes

As long as a character can still be seen in a box, you can correct it. This works in any mode with individual boxes, such as number or symbol mode.

- In  writing mode, write your letters in the boxes. They are converted to text and, for now, appear in the boxes.

Writing over a letter

- If a letter is wrong, write over the top of it with a new letter.

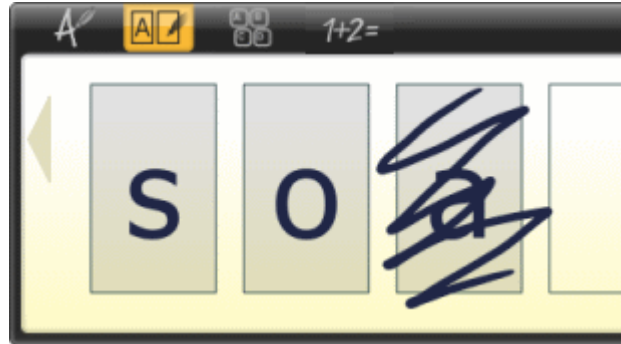


- The new result appears, ready to be sent.



● Erasing a letter

- To clear a letter, scribble over it (make a big scribble, right out of the box):



● Adding a space

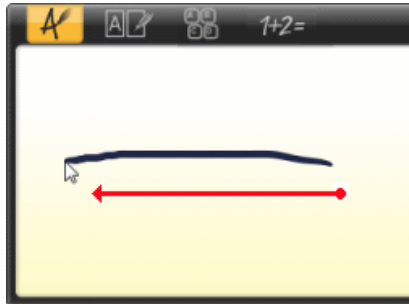
- To add a space between two letters, draw a long vertical stroke between the two boxes:



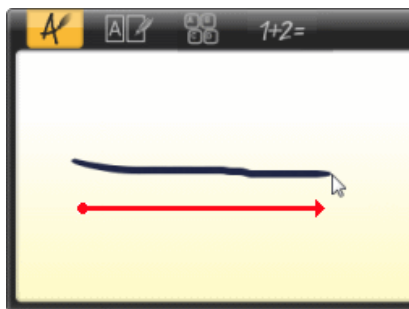
3.3.9.3 Correcting text once it has been sent

There are two ways to correct the text once it has been converted: You can modify the text animation that appears after you have written or you can modify the text that has been converted and sent to your application. See the "Correcting natural writing" page to see how to edit the text as you are writing. Once the text is in the application, you can use editing gestures or use the keypad buttons.

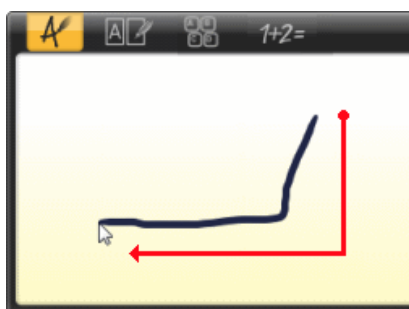
- There are some lines you can draw in MyScript Stylus to change the converted text: these can also be used in fullscreen mode:




a long stroke from right to left deletes the last character written.




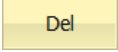
a long stroke from left to right inserts a space.

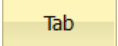



a stroke downwards and then to the left makes a new line.

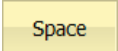
- You can also use the keypad ( - Panel Access tab, Show keypad option, although the keypad is open by default) to change the text in your application:


 Backspace: erases the last character entered.

 Del: erases the selected text or the character just after the cursor if no text is selected.

 Tab: adds a tab to the text.


 Enter: starts a new line.

 Space: inserts a space into the text.

 Left and Right: move the cursor to the left or the right.

 Copy: copies the selected text.

 Paste: pastes the copied text.



- Some editing buttons have matching gestures that perform the same task: if you tick the Show ink sample for gestures option ( - Ink tab), when you use an editing button of this type (for example, Backspace), the corresponding gesture will be displayed as an on-screen animation, to remind you.
- You can correct individual letters when you write in letter-by-letter, number or symbol modes.

3.3.9.4 Deleting text as you write

To delete your handwriting as you write, you can:

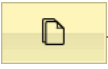
- scribble out a letter or a word,

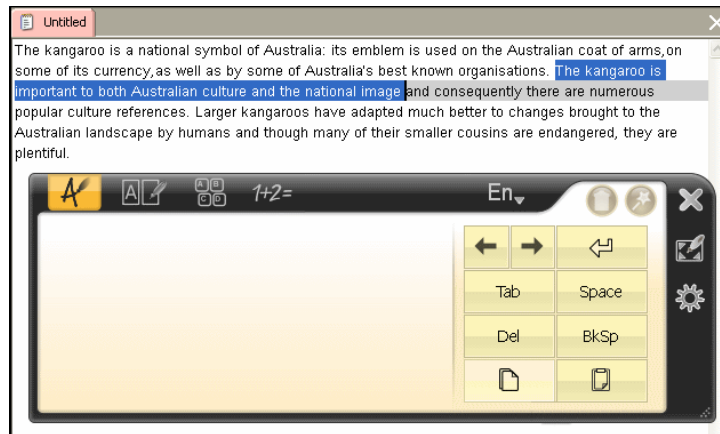


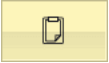
- if available, use the  feature to edit text with simple clicks,
 - if available, click the  button to clear the whole writing area.
- You can also delete text that has been sent to your application.

3.3.9.5 Copying and pasting text

Once the text has been converted, you can copy it on the screen and paste it somewhere else. The keypad must be open to do this.

- Once you have converted your text, select it in your application and click the  button in MyScript Stylus:




- Go to the place in the document, or in another application where you want to put the copied text and click the  button.

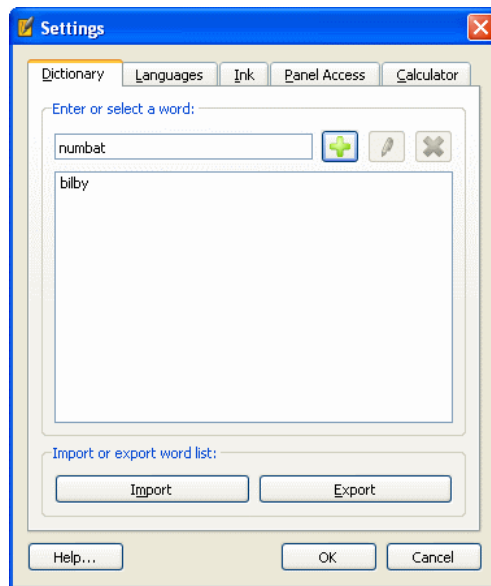
● The same actions can be made using the keypad on the mini-toolbar that appears in Fullscreen mode.



3.3.10 Using the personal dictionary

Adding words to the personal dictionary

Add a word to the personal dictionary if MyScript Stylus finds it hard to recognize. You can add people's names, names of places, schools, companies etc.



- Click the  button and click the Dictionary tab.
- Enter the new word into the Enter or select a word text box:





- Click  or press the Enter key to confirm.
 - Click OK.
- You can also enter a word straight into the personal dictionary, as you are editing your handwriting, by clicking the  icon.

Deleting words from the personal dictionary



If you no longer need a word that is in your personal dictionary, you can remove it.

- Click the  button and click the Dictionary tab.
- Click the word you wish to delete in the list of words.
- Click the  button (take care, you cannot undo the deletion).
- Click OK.

Editing words in the personal dictionary

- Click the  button and click the Dictionary tab.
- In the list of words, select the word you want to edit and click the  button.


The selected word appears in the text box and has an insertion point blinking in it.

- Make the changes you wish to make and click  to confirm. If you change your mind about your modification, you can click  to cancel it
- If you are done, click OK.

3.3.10.1 Exporting/importing a personal dictionary

You can export your personal dictionary as a simple text file of words, and import an exported dictionary or a text file too.

Exporting


- To export the current dictionary, click  and choose Dictionary.
- Click the Export button on the dialog box.
- Open the folder where you want to save the dictionary and type a name in the File name box.

This saves the dictionary as a text file.

- Click the Save button to confirm.
- Click OK to close the dialog box.

Importing


You can import an exported dictionary or a plain text file.

- To import a file into the dictionary, click  and choose Dictionary.
- Click the Import button on the dialog box.
- Find the dictionary or text file in your folders then select it and click Open or double-click its name.

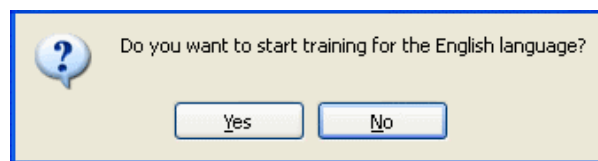
Please note that you can only import dictionaries saved in UTF-8 format. If an error occurs, you should save your file in a text editor, with UTF-8 encoding and try again.

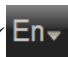
3.3.11 Training MyScript Stylus for your handwriting

By writing some letters, numbers, and symbols, you can help MyScript Stylus convert your own handwriting easily. This takes some time and patience! But you only need to do this if you have used MyScript Stylus for a while and your writing seems to be quite hard to convert.

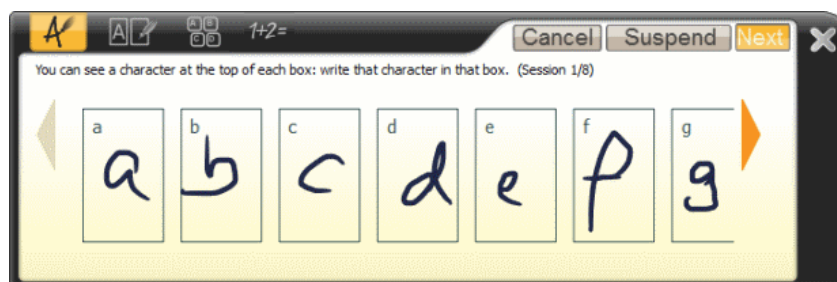
- Open the training program by clicking the  button, and opening the Languages tab.
- Click the Start training button.

You are going to do training on the current language: this dialog box shows you which language is active:



If this is not the correct language, click No, go back and choose the correct language (, click the language in the list).

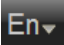
- If you click Yes, the MyScript Stylus window opens a training session.
- Write each letter shown in its box. Write naturally, the way you normally would.



- If you make a mistake, scribble out the letter. When it disappears, write it again.

Click the arrows to go on to the next boxes.

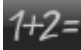
- When you get to the end of a series, the orange arrow turns grey. You should then click Next to go to the next series.
- Once you have finished, click Launch training and then OK on the dialog box so MyScript Stylus can complete the training process.

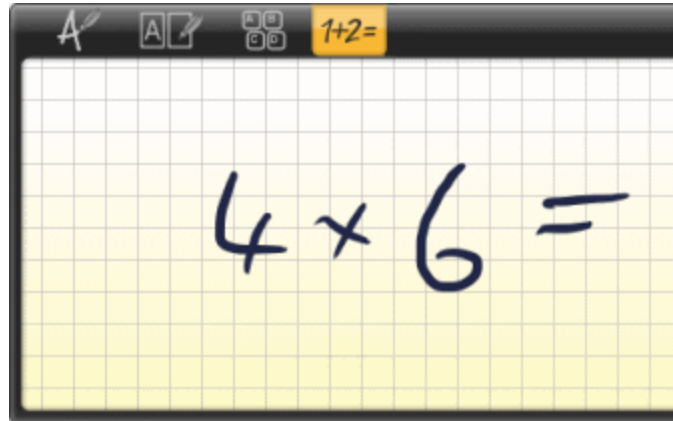
Your individual profile is now attached to the language, so that MyScript Stylus can recognize your writing more easily. That language will be noted as "Customized" when you click the  button.

3.3.12 Calculator

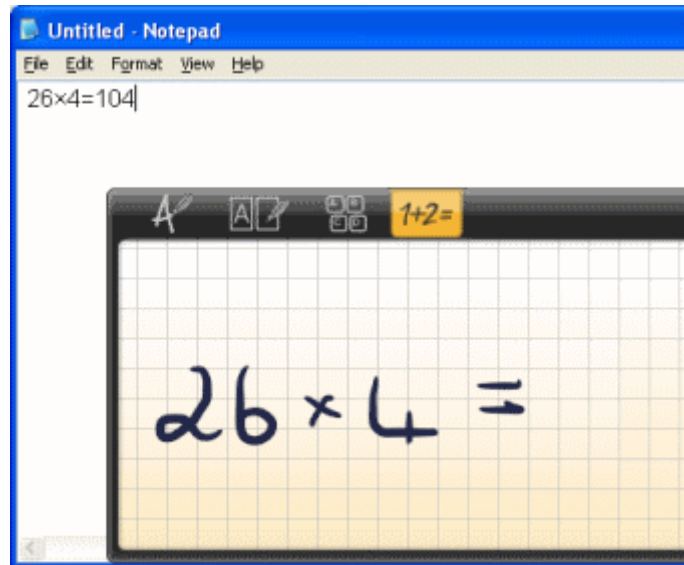
3.3.12.1 Making calculations


With the Calculator, you can write simple calculations, view and/or send the result or the whole formula, and even ask it to solve problems with unknown values for you.

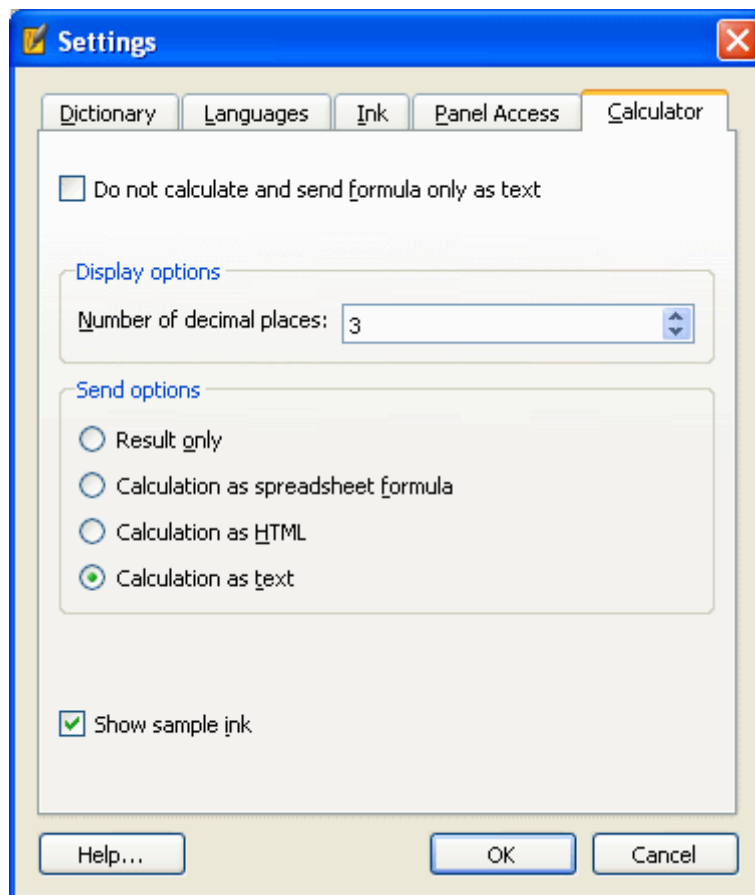
- To open the Calculator, click the  button.
- Write your calculation: the calculation and its result appear as text in the Stylus window. Write as horizontally as possible, using the grid to guide you:



- If you need to, once your calculation appears as text in the Stylus window, you can edit it by:
- using the 🏠 button to delete the whole calculation,
- using a scribble-out to delete one or more items: you can write new items in their place if you wish.
- Once you have written your calculation, the Calculator solves it for you. The parts added by the Calculator appear in another color. If you wish, you can then add to the original calculation: just write new items in the input area, the colored items disappear and the Calculator is ready to solve a new problem.
- When you click 🏠 or after the timeout, it sends to the target application.



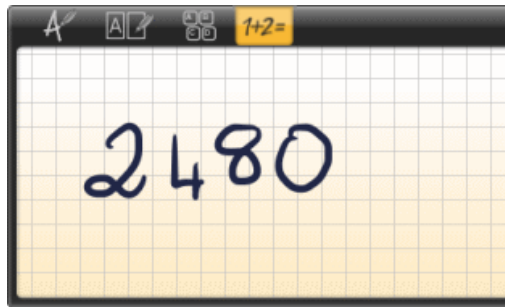
You can choose whether to send only the result, or to send the whole calculation, in your choice of format, using  - **Calculator** tab:



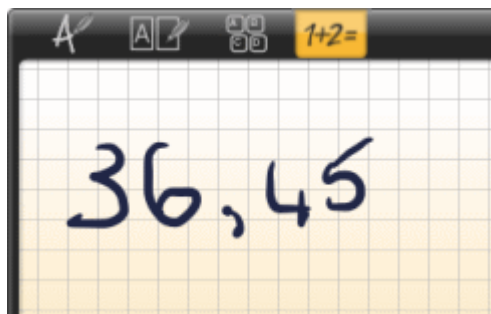
The option you choose becomes the default send method. These options can be useful, for example, to send a whole formula in order to save it in Excel.

You can write:

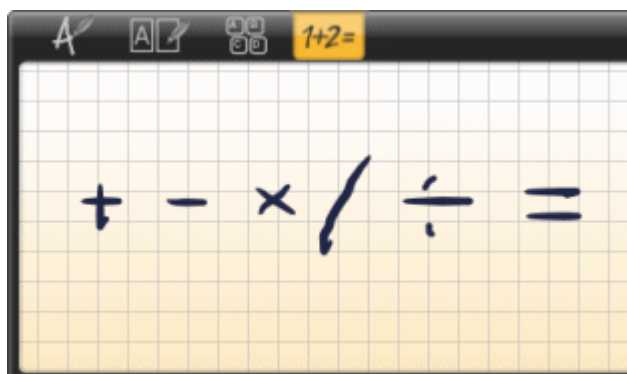
- Whole numbers
All these digits are accepted:
1 2 3 4 5 6 7 8 9 0



- Decimals
The accepted separator may be a period or a comma. This depends on the input language.



- Operators
All these operators are accepted:
+ - x * / ÷ =



- Symbols
Brackets and the pi symbol (π) are accepted.

A digital notepad interface with a grid background. At the top, there is a toolbar with icons for erasing, text color, font size, and a calculator icon. A yellow button with the text "1+2=" is visible. The main area contains the handwritten equation $(2\pi)^3 =$ in black ink.

- Question mark
This represents an unknown number, that you want to discover ([see the Solver page](#)).

A digital notepad interface with a grid background. At the top, there is a toolbar with icons for erasing, text color, font size, and a calculator icon. A yellow button with the text "1+2=" is visible. The main area contains the handwritten equation $5 \times ? = 60$ in black ink.

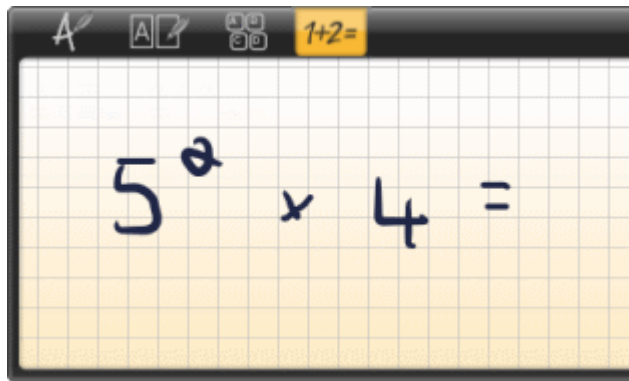
- Fractions
Make sure the fraction divider is horizontal.

A digital notepad interface with a grid background. At the top, there is a toolbar with icons for erasing, text color, font size, and a calculator icon. A yellow button with the text "1+2=" is visible. The main area contains the handwritten equation $\frac{2}{4} + \frac{1}{2} =$ in black ink, with horizontal fraction bars.

- Square roots

A digital notepad interface with a grid background. At the top, there is a toolbar with icons for erasing, text color, font size, and a calculator icon. A yellow button with the text "1+2=" is visible. The main area contains the handwritten equation $\sqrt{81} =$ in black ink.


- Exponentiation ("raised to the power of")

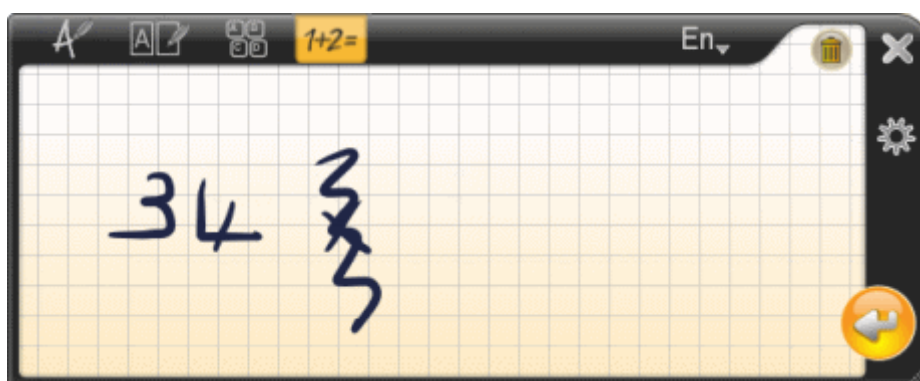



Note that you cannot write:

- Divisions by zero,
- Infinity (∞),
- Letters (algebra is not recognized).

If you write an unauthorized character, it will not be recognized in Calculator mode. You may also see an error message if the calculation you want to make is not acceptable.

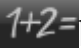
- To edit your calculations as you write, you can use the  button to delete the whole calculation, or use a scribble-out to delete one item.

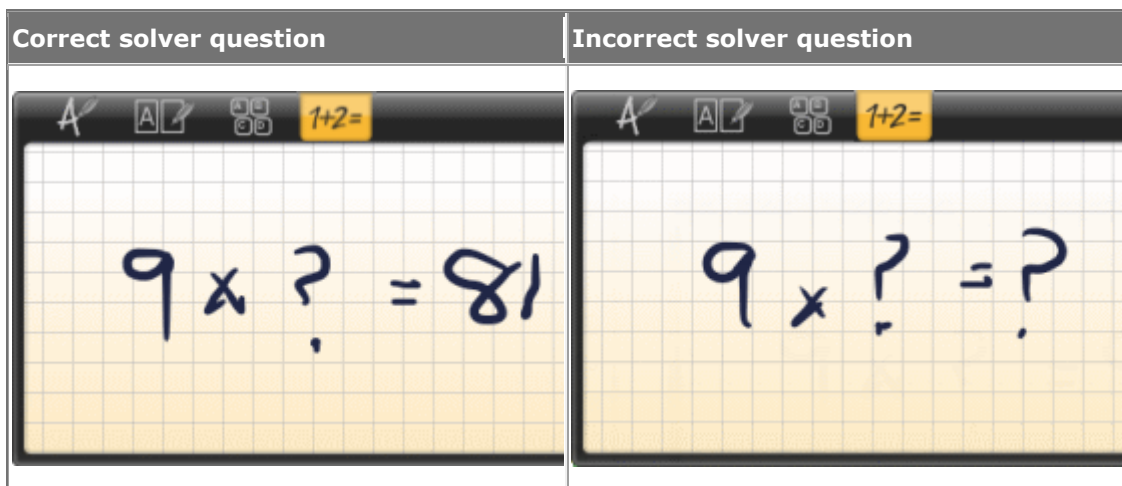


- To exit Calculator mode, click another writing mode button (such as ).

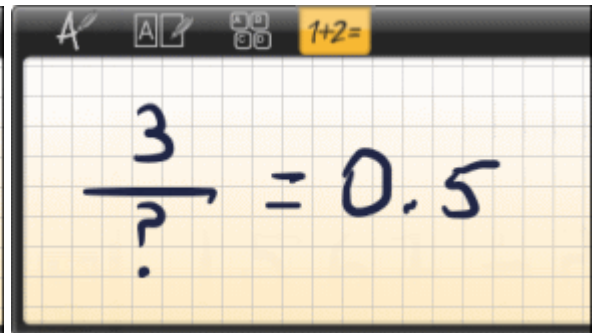
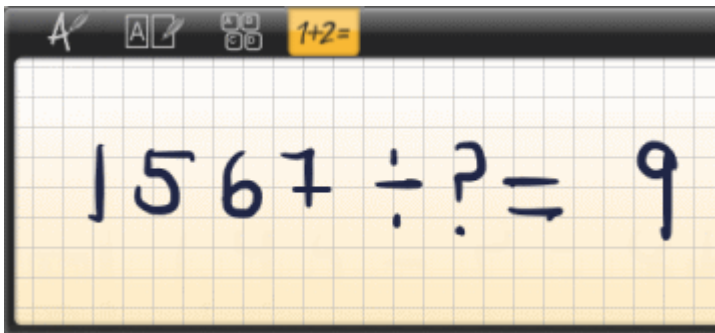
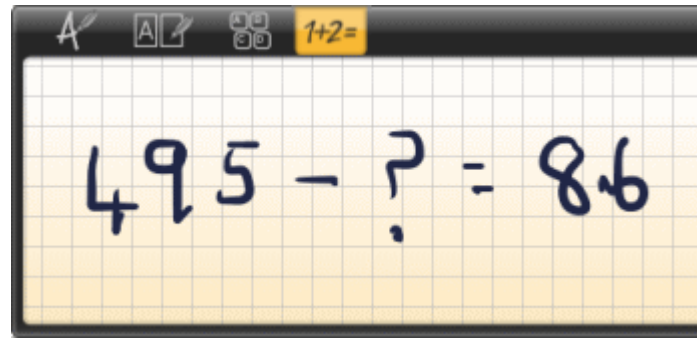
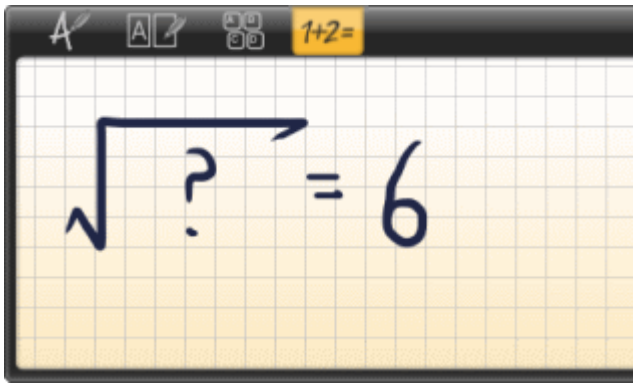
3.3.12.2 Using the solver functionalities


You can enter problems with unknown values into the calculator and ask it to find the unknown value for you.

- To open the Calculator, click the  button.
- Write your calculation, using either a space or a question mark to represent the unknown value: the problem and its result appear as text in the Stylus window. Make sure that you give the solver enough elements so it can solve the problem correctly:



- You can use all of the usual numbers and operators accepted by the Calculator: whole numbers, decimals, operators (+ - x * / ÷ =), fractions, square roots, exponentiation.
- Some examples:



- To exit the Calculator mode, click one of the other writing mode buttons (such as )

4、 Use Caution

- ① Avoid of water, dust, shaking, curving and strong light.
- ② The receiver should be clamped to the medium to fix position, and should not be moved when writing; otherwise the position of the authentic work in the document will be error.
- ③ Make sure that there are no electromagnetic interference between the pen and the receiver when writing.
- ④ Pay attention to replace with the button barriers and pen core in time.

⑤ The computer connected with the Digital Touch Pen should be in good grounding.

⑥ Avoid using Digital Touch Pen in the serious electromagnetic interference occasions.

⑦ Avoid dropping the receiver and pen from the high places.

5. Limited Liability

The manufacturer、 importer and dealer can not be held responsible for accidental damage, including personal injury or any other damage due to inappropriate usage of the product. Information in the user manual is written for the current specification of the product. The manufacturer continues to provide additional functions and apply new technology to it. All specifications may be changed without prior notice to individual user. Manufacturer should not be liable for any special, incidental or consequential damages. Even if informed of possibility there of in advance.

Furthermore, warranty does not apply to:

Damages or problems resulting from misuse、 abuse、 accident、 alteration or incorrect electrical、 incorrect voltage、 any product tampered-with damaged warranty seal or serial number barcode or serial number label、 any product without a warranty or serial number barcode or serial number label.