



ACCON-S5-LAN

User manual

This manual is for project developers, users and assemblers who utilize the ACCON-S5-LAN. It shows the user the handling of the ACCON-S5-LAN and explains the signalling functions. All necessary data for assembling should be provided to the assembler.

© 1995 - 2009

DELTALOGIC Automatisierungstechnik GmbH

Stuttgarter Str. 3
73525 Schwaebisch Gmuend
Germany

Phone sales dep.: +49-7171-916-120

Phone support: +49-7171-916-112

Fax sales dep.: +49-7171-916-220

Fax support: +49-7171-916-212

E-Mail sales dep.: sales@deltalogic.de

E-Mail support: support@deltalogic.de

Internet: www.deltalogic.de

All rights reserved. No part of this work is allowed to be copied, reproduced, conferred, processed and stored into electronic media or translated into any other language without a written permission of the author.

Note:

We have checked the content of this manual for conformity with the hardware and software described. Nevertheless, because deviations cannot be ruled out, we cannot accept any liability for complete conformity. The data in this manual have been checked regularly and any necessary corrections will be included in subsequent editions. We always welcome suggestions for improvement.

Last update 2009-08-17. All technical changes reserved.

S7-200®, S7-300®, S7-400®, HMI®, WinCC®, WinCC flexible®, ProTool®, STEP® and SIMATIC® are registered trademarks of Siemens AG, ACCON® and DELTALOGIC® are registered trademarks of DELTALOGIC Automatisierungstechnik GmbH.

Table of contents

1.	ACCON-S5-LAN properties	4
1.1.	Function	4
1.2.	Specific characteristics	4
1.3.	Scope of delivery	4
1.4.	Device description.....	5
2.	Requirements for using.....	6
2.1.	Hardware requirements.....	6
2.2.	Software requirements	6
3.	Assembly	7
4.	Using the ACCON-S5-LAN.....	9
4.1.	The software PLC-VCom	9
4.1.1.	Setup.....	9
4.1.2.	Using the software PLC-VCom	10
4.2.	STEP 5 add-on driver for ACCON-S5-LAN	13
4.3.	The software S5-LAN-Manager	15
5.	Using the ACCON-S5-LAN.....	18
5.1.	Siemens S5 software V7.x.....	18
5.2.	Windows Control Center (WinCC V6.0).....	18
5.3.	Direct communication with WinCC V6.0.....	20
5.4.	ACCON-S5-LAN and the DELTALOGIC S7/S5-OPC-Server.....	24
6.	Technical data.....	25
7.	Troubleshooting (FAQ)	26

1. ACCON-S5-LAN properties

1.1. Function

ACCON-S5-LAN is a connection adaptor between a PC and a S5 controller via Ethernet using TCP/IP. The voltage feed is effected by the PLC's interface, so an external supply feed is not necessary. The ACCON-S5-LAN has an integrated multiplexer to allow you to visualize and program at the same time. With the help of the supplied software, a virtual, serial interface can be setup at the PC. Therefore, each software supporting a serial connection to the S5 PLC can use the ACCON-S5-LAN. Furthermore, the ACCON-S5-LAN supports the RFC1006 protocol (ISO on TCP) as well as the protocol for the connection of a TCP-compliant Ethernet CP e.g. CP 1430 TCP or a compatible device. Thus, the ACCON-S5-LAN needs no additional drivers and can be used with all programs supporting these protocols.

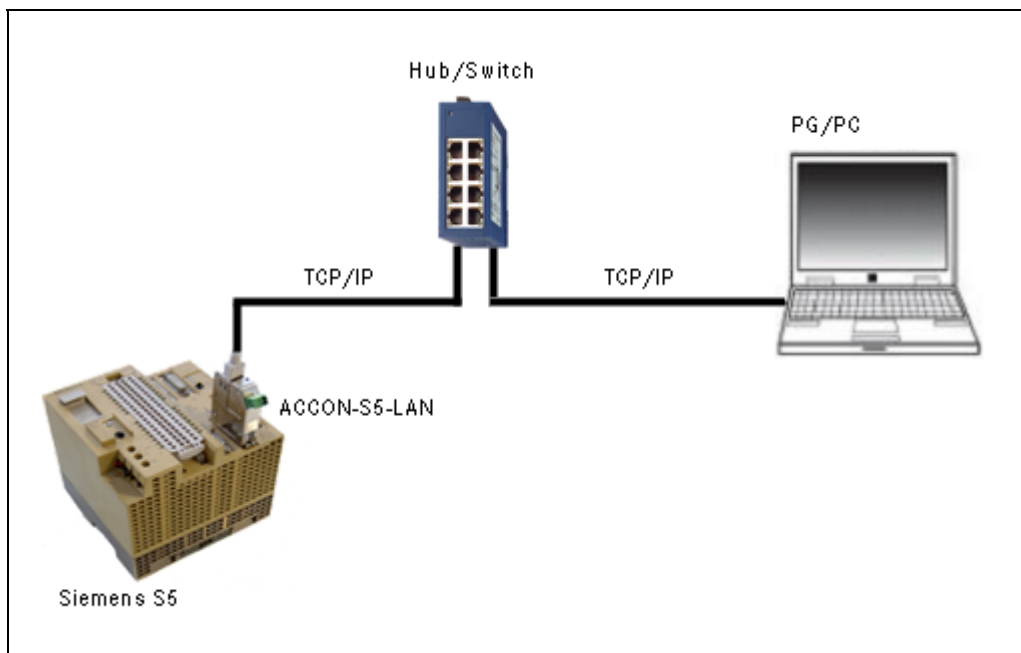


Figure 1: ACCON-S5-LAN configuration

1.2. Specific characteristics

- Compact, low-cost connection of S5 PLCs to Ethernet
- Quick and easy configuration and commissioning
- Integrated multiplexer for simultaneous programming and visualizing
- Access via virtual, serial interface
- Access via S5-TCP/IP (RFC1006)

1.3. Scope of delivery

- ACCON-S5-LAN
- CD including software for a virtual, serial interface
- Getting started guide

1.4. Device description

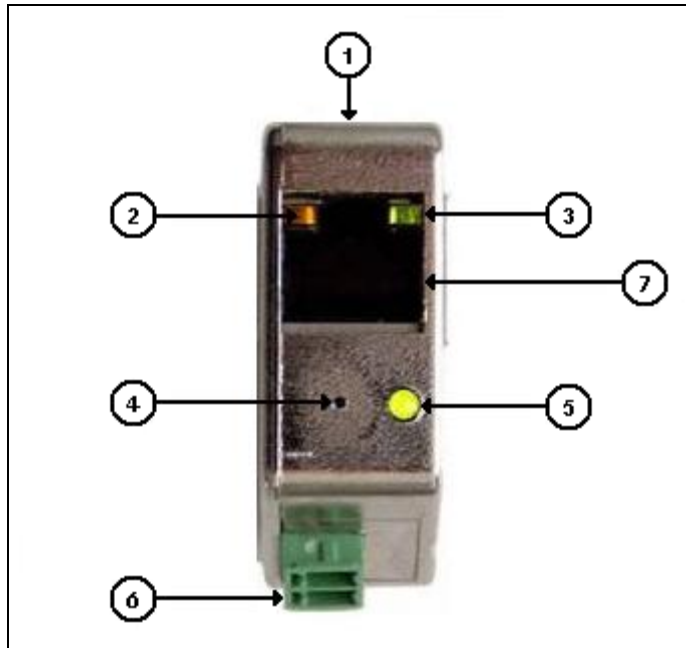


Figure 2: ACCON-S5-LAN - notifications and interfaces

- 1.) PU interface S5
- 2.) LED for 10 Mbps network
- 3.) LED for 100 Mbps network
- 4.) Hardware configuration reset
- 5.) S5 communication state:
 - LED **off**: device is off or in boot mode
 - LED **on**: PLC is online
 - LED **flashing** and LED 2) and 3) is off: no PLC is connected
 - LED **flashing** and LED 2) or 3) flashing: a data transfer is running
- 6.) 24 VDC bushing for external voltage feed (optional)
- 7.) RJ45 bushing to connect the device to a regular hub/switch via cross-over-cable or connect direct to a network interface card via patch cable (straight).

2. Requirements for using

2.1. Hardware requirements

A network interface card 10/100 Mbps with RJ-45 bushing.

2.2. Software requirements

For using the ACCON-S5-LAN you need a PC with Windows NT, Windows 2000 or Windows XP. The use with Windows 98SE and Windows Me is possible, but no support is available for these OS.

3. Assembly

Connecting to the PLC

The ACCON-S5-LAN will be plugged in directly on the S5 PLC. Normally the voltage feed is effected by the PLC's interface. If the PLC does not have a 24 VDC power supply (e.g. S5-95U), this allows the ACCON-S5-LAN to be fed 24 VDC (green clamp).

Connecting to the PC

The connection of the PC and the ACCON-S5-LAN is done by a network. The connection of the ACCON-S5-LAN to the network is done via the built-in RJ45 jack. Plug one end of the patch cable into the RJ45 jack and the other end into a hub/switch, which is connected to the network interface card of your PC.

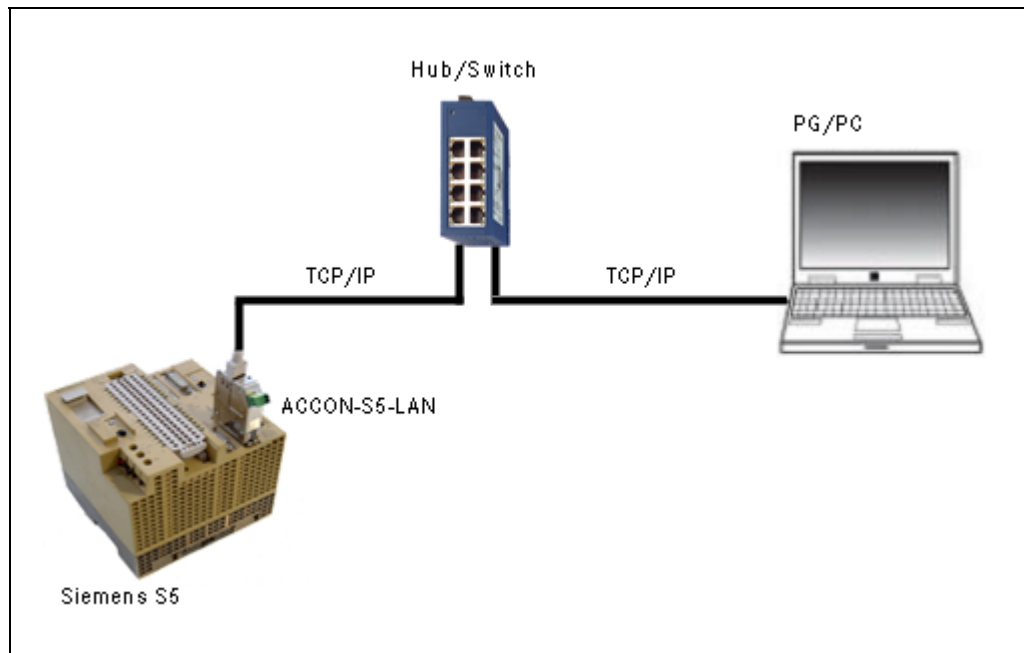


Figure 3: Connecting the ACCON-S5-LAN to a PG/PC via hub/switch

A direct operation of the network card on your PC without a hub/switch is possible. You have to use a cross-over cable for this kind of connection.

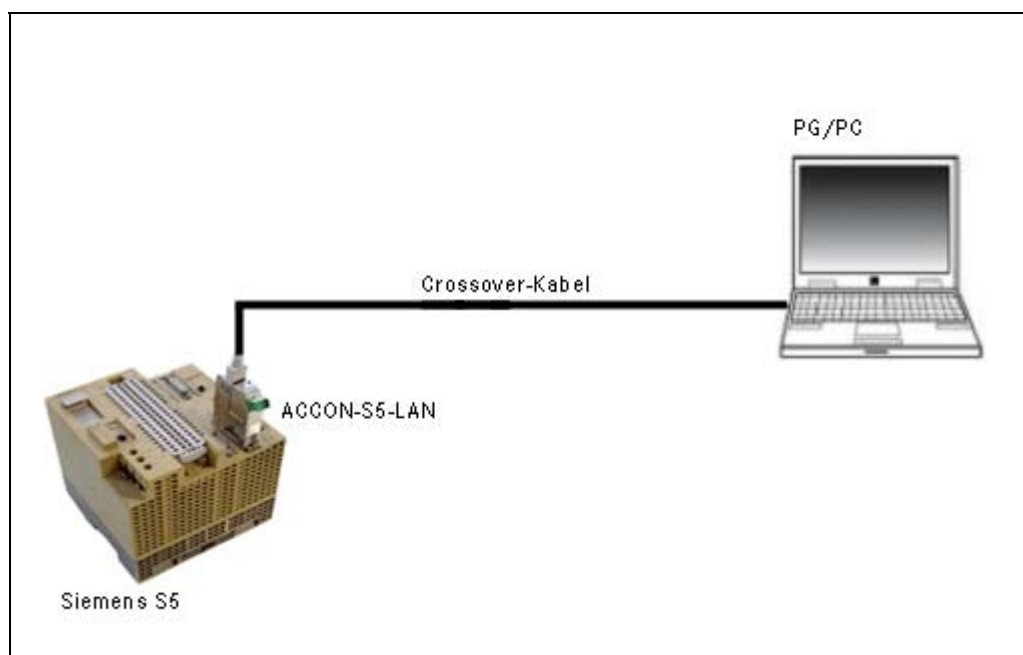


Figure 4: Connecting the ACCON-S5-LAN to a PG/PC via cross-over-cable

4. Using the ACCON-S5-LAN

The setting of the ACCON-S5-LAN's IP address is made with the »S5-LAN-Manager« program. This program is provided on the DELTALOGIC Automatisierungstechnik-CD, under »CD drive:\S5\ACCON-S5-LAN\PLCVCom\S5LanMan.exe« for direct use. If the communication is exclusively effected via RFC1006, no further software will be necessary. Please find further information about the »S5-LAN-Manager« program in chapter 4.3 »The software S5-LAN-Manager«.

If the ACCON-S5-LAN is to replace a serial connection, a virtual, serial interface has to be setup. This is made with the »PLC-VCom« program, look chapter 4.1 »The software PLC-VCom«.

If the Siemens S5 software is used, an additional modulation of the Siemens S5 software has to be made in order that the latter is able to use the virtual, serial interface of the »PLC-VCom« program. This modulation is done by the »S5USB.exe« program. This program is provided on the DELTALOGIC Automatisierungstechnik-CD, under »CD drive:\S5\ACCON-S5-LAN\STEP5 Patch« for direct use. For further notes, look chapter 4.2 »STEP 5 add-on driver for ACCON-S5-LAN«.

4.1. The software PLC-VCom

The setup program »Setup.exe« is provided on the DELTALOGIC Automatisierungstechnik-CD in the CD menu under »S5-Hard-/Software/ACCON-S5-LAN«. Or in the explorer under »CD drive:S5\ACCON-S5-LAN\PLCVCom«. The »S5-LAN-Manager« program is installed simultaneously.

4.1.1. Setup

- Insert now the DELTALOGIC Automatisierungstechnik-CD in your drive. Under »CD-drive:\S5-Adapter\ACCON-S5-LAN\PLCVCOM« you find the setup program for the ACCON-S5-LAN driver PLC-VCOM. Start the »Setup.exe« file.
- After the language selection, the installation starts in the selected language and the welcome dialogue pops up. Click »Next« to select the destination folder (look figure below). In order to change the destination folder click »Browse«. Then confirm the »Next« button.

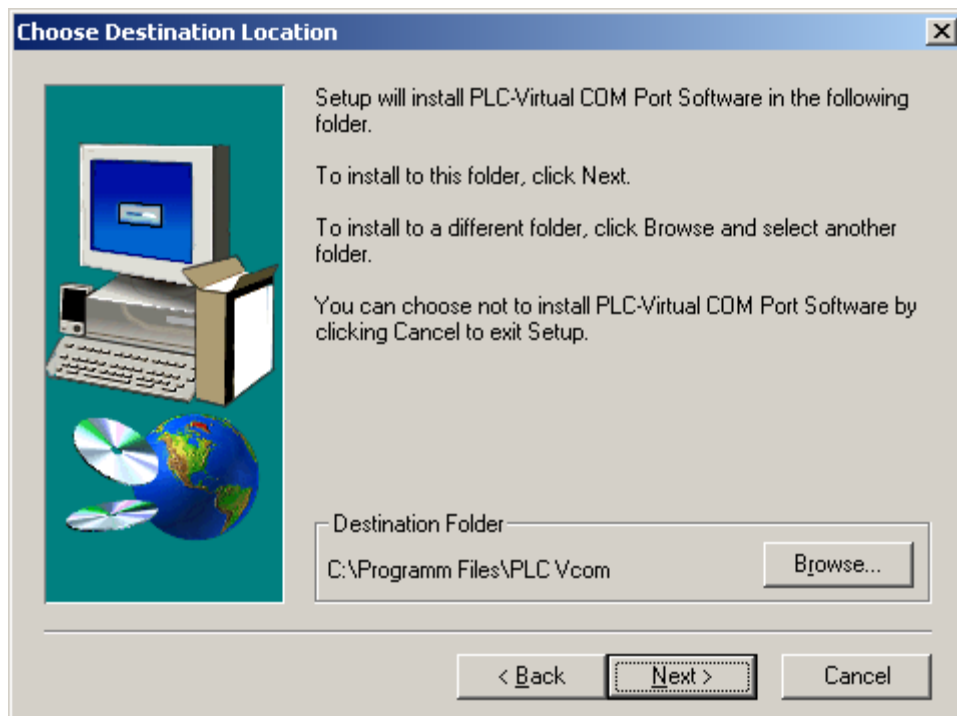


Figure 5: Setup PLC-VCom - choose destination location

- In this dialogue, select the program folder for the PLC-VCom start entries. Afterwards, click »Next«.

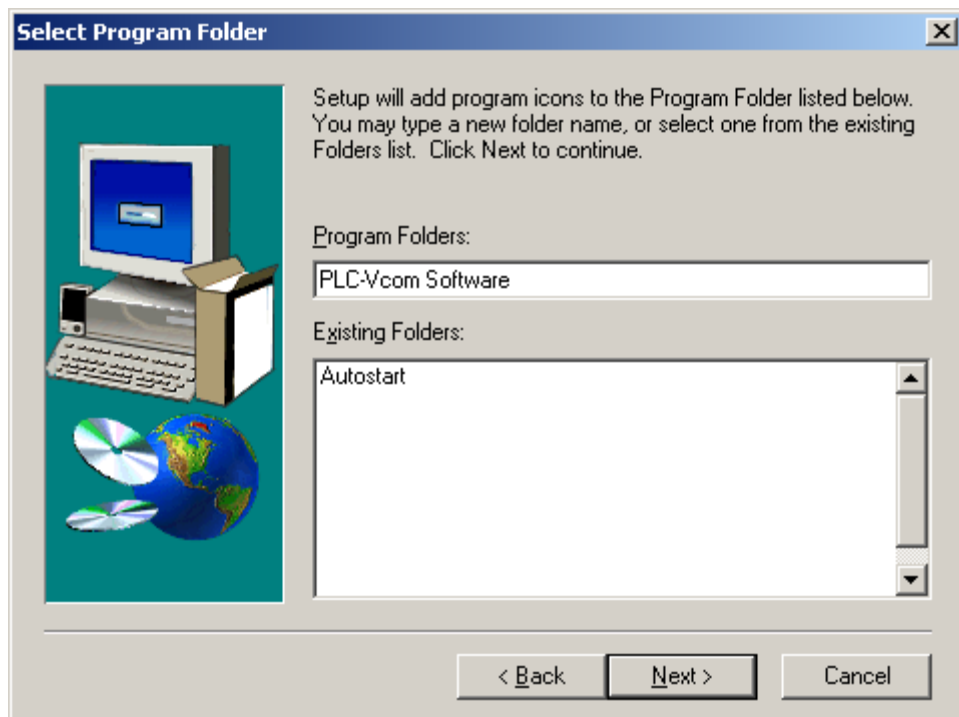


Figure 6: Setup PLC-VCom - select program folder

Now, the installation is started. This can take several minutes on older PCs.

4.1.2. Using the software PLC-VCom

The »PLC-VCom« program uses automatically the next free serial interface as a virtual serial interface, this is mostly the COM3. If another interface is to be used, you can configure it with the »SelectCOM« program. The »SelectCOM« program is accessed via the start menu.

The assignment to which ACCON-S5-LAN the virtual serial interface is connected is be made in the »PLC-VCom« program.

- Start PLC-VCom via the start menu.
- Click on »Configure« in the following dialogue in the state section. The assistant will be started.
- Select the required ACCON-S5-LAN and press »OK«.
- When the IP address of the selected ACCON-S5-LAN is shown in the state section in the PLC-VCom dialogue and »connected« is indicated, the connection is made.

In the tray of the task bar (to the left of the time), the symbol for the PLC-VCOM software is shown. The setup program enters the program in the autostart folder so that it is loaded automatically with every startup. If this will not be the case, please start the program via the start menu.

This symbol shows the current state of the connection to the configured ACCON-S5-LAN.

States:



PLC-VCom is connected to an ACCON-S5-LAN and ready for operation.



PLC-VCom is not connected to any ACCON-S5-LAN.

The symbol changes steadily on an active communication with an ACCON-S5-LAN.

Sending display:

If this LED lights green, data are sent to the ACCON-S5-LAN



Receiving display:

If this LED lights green, data are received from the ACCON-S5-LAN



If these LEDs light red, an error has occurred during communication.

By clicking on this symbol  you start the PLC-VCom dialogue.

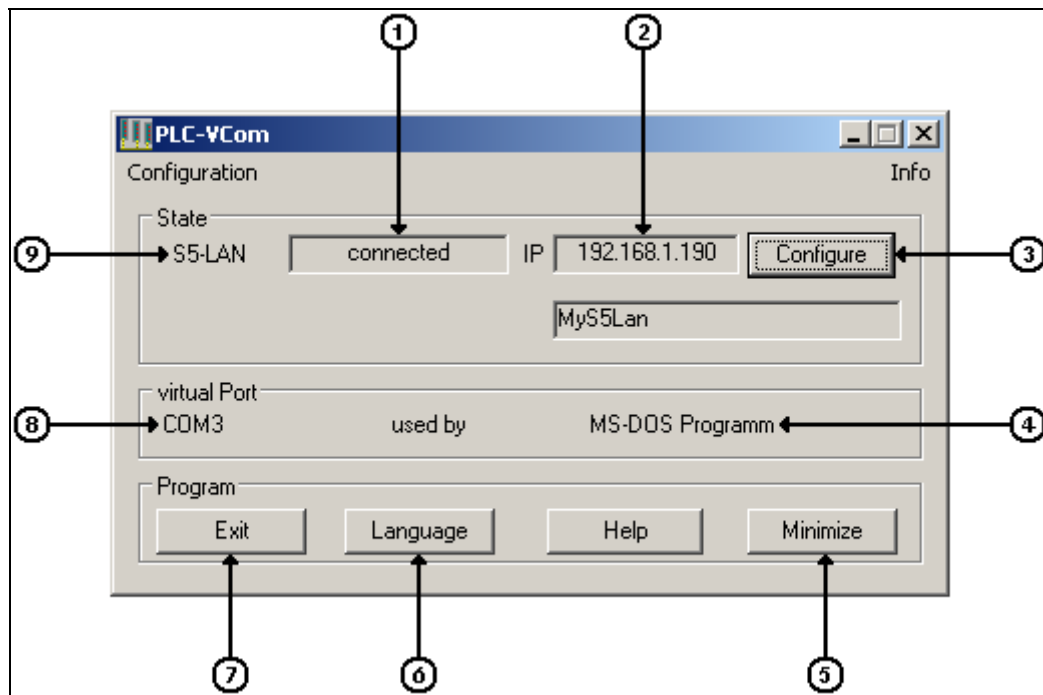


Figure 7: PLC-VCom dialogue window

1st) Status display

2nd) The IP address of the configured ACCON-S5-LAN

3rd) Search or select an ACCON-S5-LAN

4th) Software, which uses or has used this interface at last

5th) Minimize dialogue window to tray

6th) Switch language between German and English

7th) Exit program and remove virtual serial interface

8th) Configured virtual serial interface

9th) Adapter type, here always »S5-LAN«

Click on »Configure« in the PLC-VCom dialogue to address an ACCON-S5-LAN. The following dialogue is shown.

LAN - IP- VCOM - Connection

Name	LAN - Type	IP-Address	MAC-Address	Version	Serial number	Port	Net
MyS5Lan	S5-LAN	192.168.1.190	00-20-4A-8B-AB-E9	0.64	5713306	10010	0

IP address: 192 . 168 . 1 . 190 00:20:4A:8B:AB:E9 **Search**

use network-card 0:Ethernetadapter der AMD-PCNET-Familie - Paketplaner-Miniport ▾ **Help**

LAN-Type: S5-LAN ▾ ☐ Input manually ☐ serielle Pausenzeiten

S5-PG-Port: 10010 ☐ no Network ☐ Installation in Device-Manager **OK**

☐ No bind to Network Card **Cancel**

Figure 8: LAN - IP - VCOM - Connection

By clicking on »**Search**« you send a broadcast to all connected network devices in the local network. Every ACCON-S5-LAN responding to this broadcast is shown in the list.

If you already know the »**IP address**« of your ACCON-S5-LANs, you have the possibility to input it manually. The input box for it is activated by the checkbox »**Input manually**«.

If »**Input manually**« is active, the Drop-Down element LAN-type is activated. Select »S5-LAN« here.

Input manually

If »Input manually« is activated, you can input the boxes »IP address«, »LAN-Type« and »S5-PG-Port« yourself. If »Input manually« is not activated, you can only select devices from the list.

Access from MSDOS-Box (only on Windows 98SE and Windows Me)

Activate this checkbox if you use software running in the MSDOS mode (Example: Siemens STEP 5).

No Network

This function is not necessary for the ACCON-S5-LAN.

Installation in Device-Manager

This function is not necessary for the ACCON-S5-LAN.

serial idle times (serielle Pausenzeiten)

This function is not necessary for the ACCON-S5-LAN.



As soon as you have pressed »OK« and an ACCON-S5-LAN has been selected, the PLC-VCOM dialogue will be refreshed and shows the selected ACCON and the »connected« state in the »Status« section.



The virtual COM-Port is not visible, adjustable and usable before PLC-VCom is in the »connected« state, e.g. a connection to an ACCON-S5-LAN exists.

4.2. STEP 5 add-on driver for ACCON-S5-LAN

In order to make the virtual serial interface (COMx) setup by PLC-VCom available for the Siemens S5 software, this add-on driver must be installed.



PLC-VCom must be installed previous to this add-on driver!



Before you start the installation, please close the Siemens S5 software. The add-on driver can only be installed when the Siemens S5 software has not been started.



Under Windows 98SE and Windows ME the add-on driver is not necessary as the function can be selected in PLC-VCom.

Insert now the DELTALOGIC Automatisierungstechnik-CD in your drive. Under »CD-drive:\S5-Adapter\ACCON-S5-LAN\STEP5 Patch« you find the driver setup »S5USB.exe« and start it.



Figure 9: Device selection

Select »S5-LAN« as device and apply with »OK«.

In the next dialogue you start the installation by clicking on the »Install« button. By clicking on »Uninstall« you delete an already installed driver.

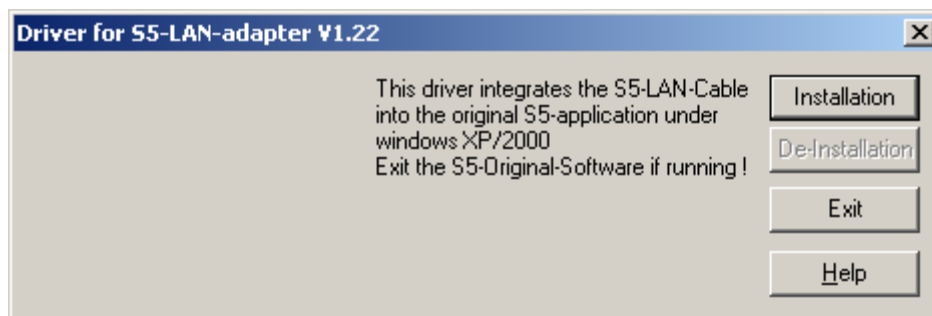


Figure 10: Installation/Deinstallation of the add-on driver

The installation assistant now makes the necessary changes, whereas the process differs on the basis of the present version of the Siemens S5 software. As soon as the »Install« button is deactivated (grey font colour) the installation is complete. Then close the assistant with the »Exit« button.

Siemens STEP 5 V6.x

At first, the dialogue window showed in Figure 11 appears indicating the currently available drives. Select the drive on which the Siemens S5 software is installed. As all sub-directories are always searched beginning with the stated

starting point, it is normally adequate to name the right drive. In order to abbreviate the searching time, you can indicate the directory where the software is saved by double-clicking on the list entry with the drive letter.

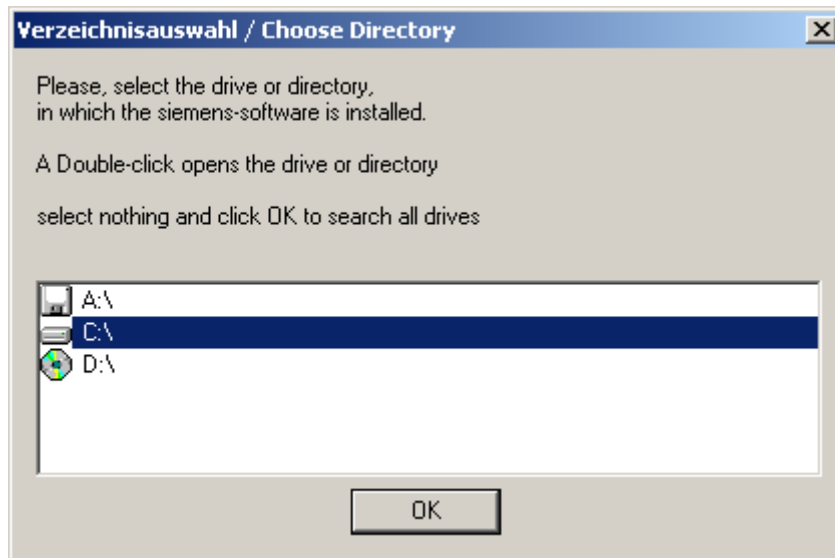


Figure 11: Choose directory

After the verification of the drive respectively directory choice by clicking the »OK« button, the search begins and the query shown in Figure 12 appears on success.

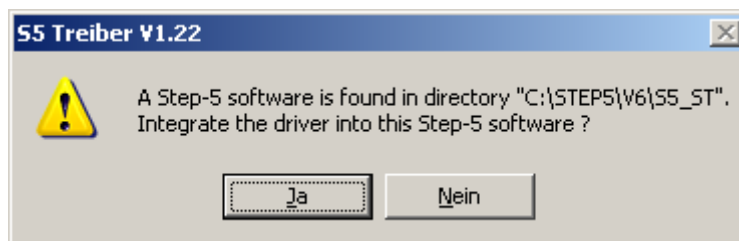


Figure 12: Confirm the founded directory

If the indicated directory is not correct, the search will be continued with »No«. If the indicated directory is correct, please confirm with »Yes«. The necessary changes will be made thereupon and at least the program will be closed.

Siemens STEP 5 V7.x

If an installed Siemens S5 software version 7.x is found, the dialogue shown in Figure 13 will appear.

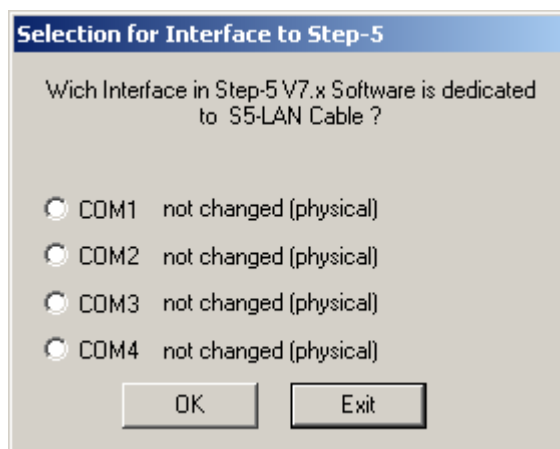


Figure 13: Query the serial interface for Siemens S5 Software V7.x

Select here the same interface that has been setup as virtual serial interface in the »PLC-VCom« program. Then verify with »OK« and the necessary changes will thereupon be made and at least, the program will be closed.

In both versions, the result display shown in Figure 14 is presented after successful ended setup.

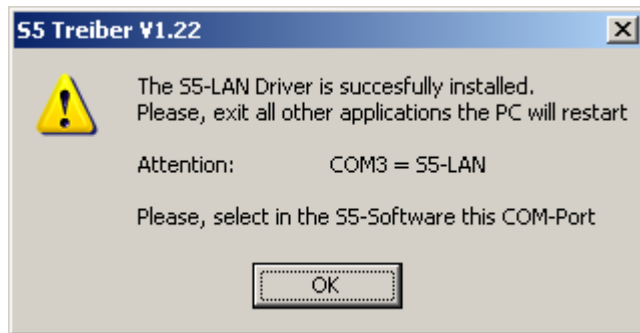


Figure 14: Successful ended setup of the add-on driver

Before using the ACCON-S5-LAN with the Siemens S5 software the PC must be restarted.

4.3. The software S5-LAN-Manager

All ACCON-S5-LAN settings are made with the »S5-LAN-Manager« program meaning the IP address data (IP address, net mask, default gateway, DHCP support), the used TCP port addresses, the device name and even the possibility of a firmware update.

The »S5-LAN-Manager« program can directly be started from the DELTALOGIC Automatisierungstechnik-CD, under »CD-drive:\S5\ACCON-S5-LAN\PLCVCom\S5LanMan.exe«. As soon as the »PLC-VCom« program has been installed, the program startup can be made via start menu or via the »PLC-VCom« program in the »Configuration« / »S5LAN« menu. In every case the program window shown in Figure 15 will appear.

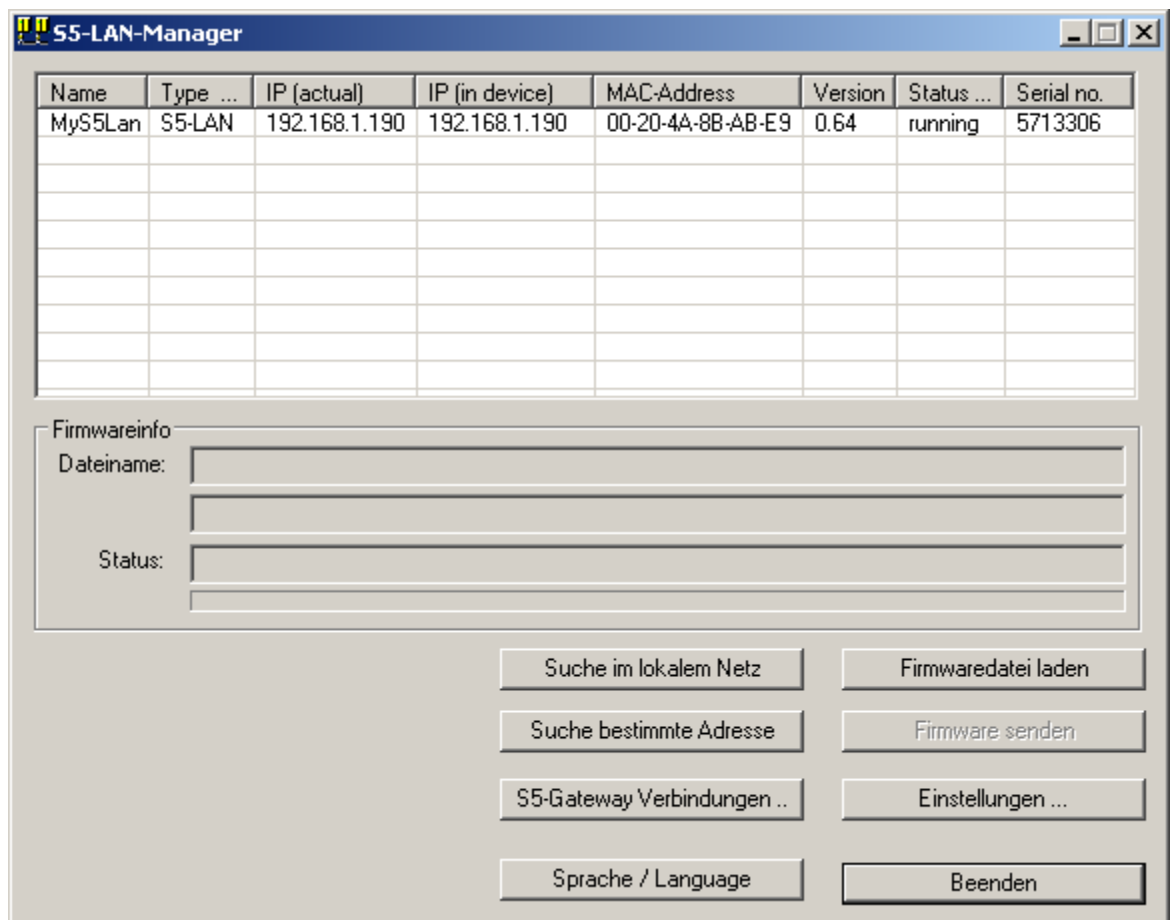


Figure 15: S5-LAN-Manager

By clicking on »Browse local network« you send a broadcast to all connected devices in the local network. Every ACCON-S5-LAN responding to this broadcast is shown in the list.

If you already know the IP address of your ACCON-S5-LAN, you can enter it by clicking on »**Suche bestimmte Adresse**« (Search certain address) and search it by clicking on »**Find**«.

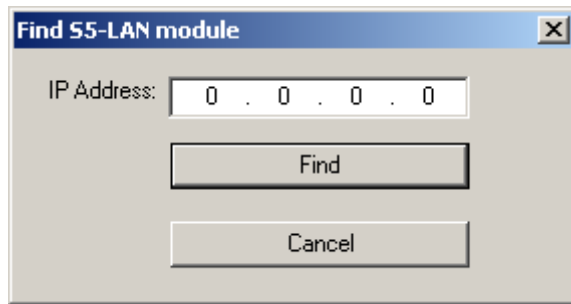


Figure 16: Find ACCON-S5-LAN

In order to send a firmware file via the »**Firmware senden**« (Send firmware), the firmware has to be loaded before. This is made with the help of the »**Firmwaredatei laden**« (Load firmware file). A dialogue for selecting the respective firmware file appears.

Select the respective firmware file and verify with »OK«. Firmware specific information is now indicated in the »Firmware info« section.

As soon as you have loaded the firmware file, the »**Firmwaredatei laden**« (Load firmware file) button will be activated. Select the ACCON-S5-LAN and activate this button to send the firmware.



We recommend to update the firmware of the ACCON-S5-LAN only in case of problems with the existing version.



While the firmware is updated and sent to the ACCON-S5-LAN, the ACCON-S5-LAN must not be disconnected from the network respectively from the power supply. Otherwise, there is danger that the ACCON-S5-LAN does not work correctly anymore.

Click on »**Einstellungen**« (Settings) to change the features of the ACCON-S5-LAN in the following dialogue. »OK« saves the new settings and closes the dialogue.

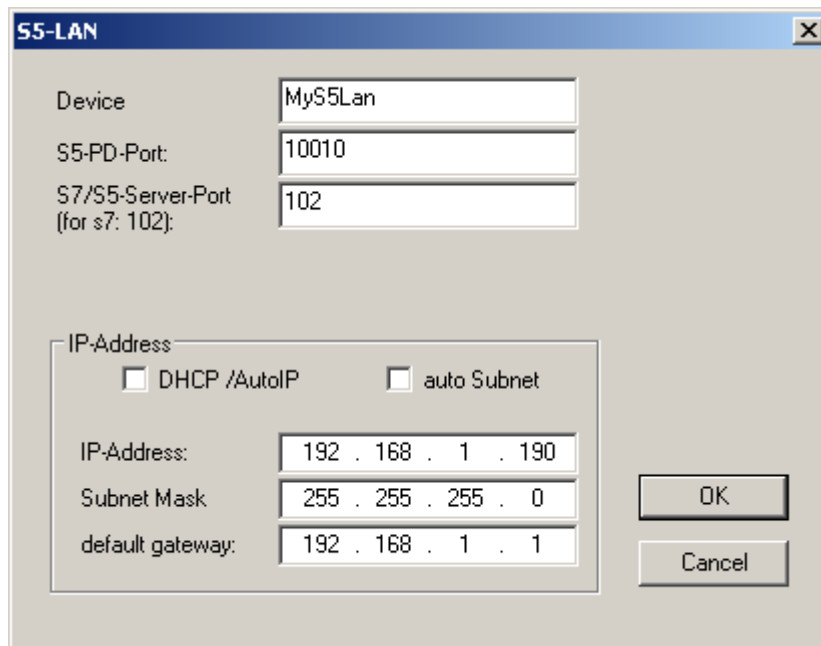


Figure 17: ACCON-S5-LAN properties

Device

The device name can be any text. So, you are able to identify every ACCON-S5-LAN definitely.

S5-PD-Port

Via this port, the ACCON-S5-LAN and the PD respectively the PC communicates with each other. This normally needs not to be changed. (Standard: 10010)

S7/S5-Server-Port

Via this port, the S5-LAN-LINK protocol is executed. (Standard: 2002)

DHCP/AutoIP

If this checkbox is active, the ACCON-S5-LAN is searching a DHCP server to receive an IP address on startup. If no server can be found after 3 retries (can take several seconds), the ACCON-S5-LAN will search an IP address from the »Auto-IP« address range.

auto Subnet

If set, the ACCON-S5-LAN calculates the subnet mask automatically, e.g. for 192.168.0.80 it is the 255.255.255.0. In the subnet mask box nothing has to be input in this case. We recommend to not activating this function.

IP-Address

If »DHCP/AutoIP« is disabled, the IP address of the ACCON-S5-LAN can here be entered.

Subnet Mask

Here, you define the subnet mask. When entering 0.0.0.0 »auto Subnet« will be activated.

default gateway

If you connect the ACCON-S5-LAN to a router, so enter here the router's IP address.



Please consider that the IP address you assign to your ACCON-S5-LAN is fitting to your network and existing only once. Likewise, the PC communicating with the ACCON-S5-LAN must have an appropriate IP address. If you are not sure which IP address you can assign, please contact your network administrator.

5. Using the ACCON-S5-LAN

5.1. Siemens S5 software V7.x

In order to use the ACCON-S5-LAN with the Siemens S5 software, you need the »PLC-VCom« program, see chapter 4.1 »ACCON-S5-LAN«.

Under Windows 98SE and Windows Me, the checkbox »Access to MSDOS-Box« must be activated in the configuration. Using other operating systems this checkbox is not visible. In this case, an add-on driver is necessary. For further information, please advise chapter 4.2 »STEP 5 add-on driver for ACCON-S5-LAN«.

This step is necessary that the Siemens S5 software can communicate with the PLC via the ACCON-S5-LAN.

Start the Siemens S5 software.

Via the menu »file«, you can open the »Configure«-dialogue in the submenu »Project«. Alternatively, you get to this dialogue via the »F4« key.

In the »PLC« flag you configure the used PLC interface (in this example: »AS511«). Below, you can setup the COM interface created by the PLC-VCOM software (example: »COM3«).

Pressing »F3« changes the »Mode« to »Online«. The window should then show the »PLC type«.

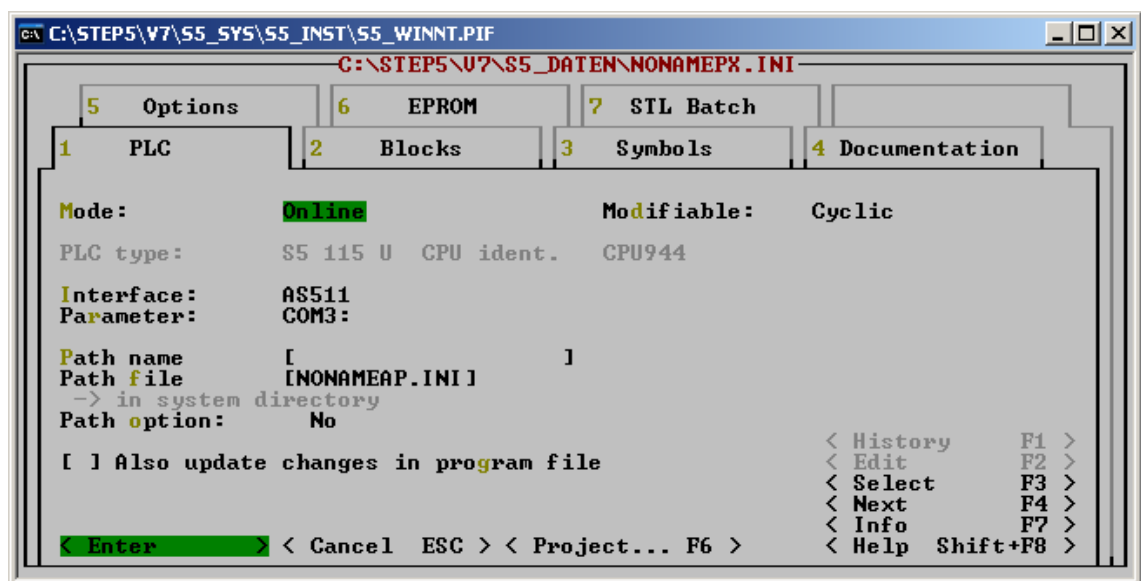


Figure 18: Property page »PLC« of the Siemens S5 software V7.x

The connection to the PLC is successfully effected as soon as the »Mode« changes to »Online«.

5.2. Windows Control Center (WinCC V6.0)

Start WinCC. Select »File« / »New« in the menu or click on the respective symbol to open a new project.

In the next dialogue, you have the choice between »Single-user project«, »Multi-user project« and »Client project«. The following steps are explained on the basis of »Single-user project«.

After the selection of the project type, you arrive at a dialogue in which you enter the project path and name. You confirm the selected path as well as the name via »Apply«.

The project will now be created and the project content will be listed on the left hand side of the main window.

In order to create a communication with the PLC, it must be defined how the software has to communicate with the PLC. For this purpose, please right click on »Variable budget« and select »Add new driver...« in the context menu.

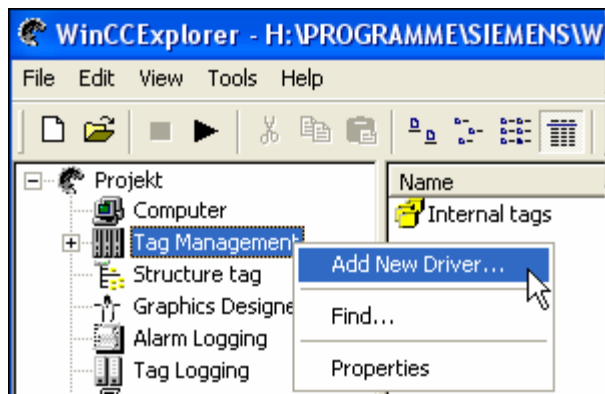


Figure 19: Add new WinCC communication driver

In the »Open« dialogue, you select the respective communication driver. For the access to a S5 PLC you can select the »SIMATIC S5 Programmers Port AS511.chn« file.

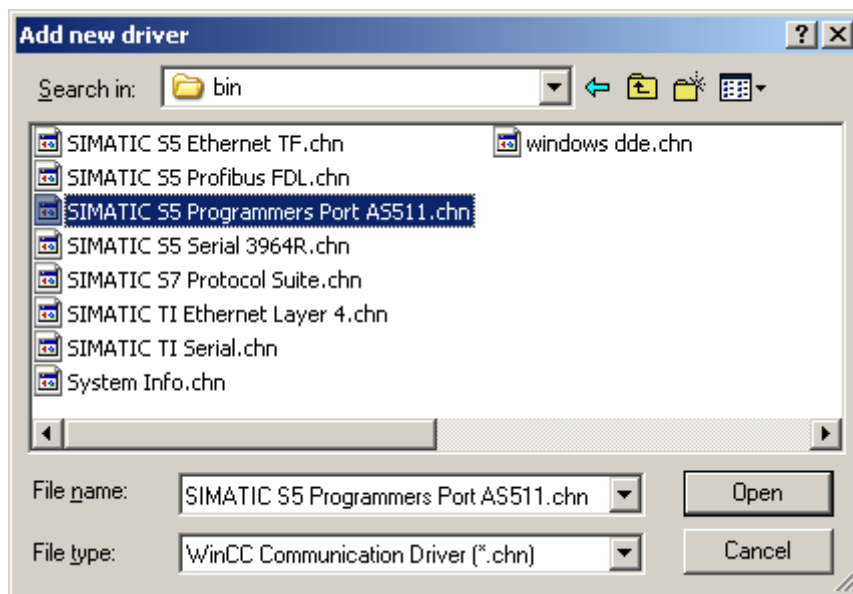


Figure 20: Select a WinCC communication driver



It is important that the selected communication driver is fitting to the PLC that is to be accessed, because otherwise, a communication is not possible.

In the »Variable budget«, you now find a new submenu item (in this case »S5-AS511«). Open this menu and a further submenu item appears on which you have to right click and select »New connection...« in the context menu.

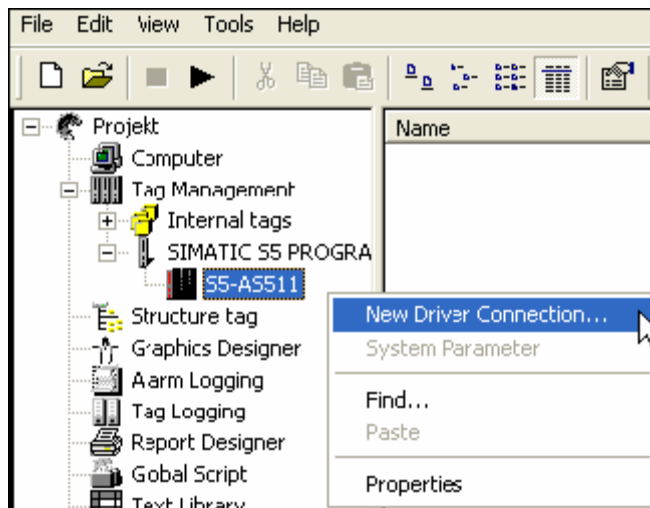


Figure 21: Add a new driver connection

Now, you can enter the name of the connection and by clicking on »Properties« a further dialogue will be opened, in which you setup the connection properties. Just enter the used COM-Port (in this example »\\.\COM3«).

Confirm with »OK« until you are back in the main window.

Now, you can start the communication via  and end it via .

5.3. Direct communication with WinCC V6.0

This communication uses the H1-ISO-on TCP or also RFC1006 protocol. It is used in the Siemens S5 environment to communicate with the CP 1430 TCP via Ethernet. Thereby, TSAP and SSAP each are to be indicated. ACCON-S5-LAN accepts any name for TSAP respectively SSAP. This protocol is also very suitable for WinCC (use there S5 TCP/IP Layer 4).



If you use this protocol, port 102 is to be entered in the ACCON-S5-LAN.

Firstly, you start the »S5-LAN-Manager« program via the respective shortcut in the start menu.

Click on the »Search in local network« button and mark the ACCON-S5-LAN, which is to be used for the communication with WinCC.

Via the »Settings« button, you get in the settings dialogue. There, you configure the »S7/S5-Server-Port« to »102«.

Confirm your entry with »OK« and close the program.

Furthermore, you must configure the PD/PC interface to setup a suitable assignment point. Go to the system control and click on »Setup PD/PC interface«.

Browse for »TCP_IP« under »Application access point«. If this one does exist you can skip this step, otherwise select »Add/Delete«.

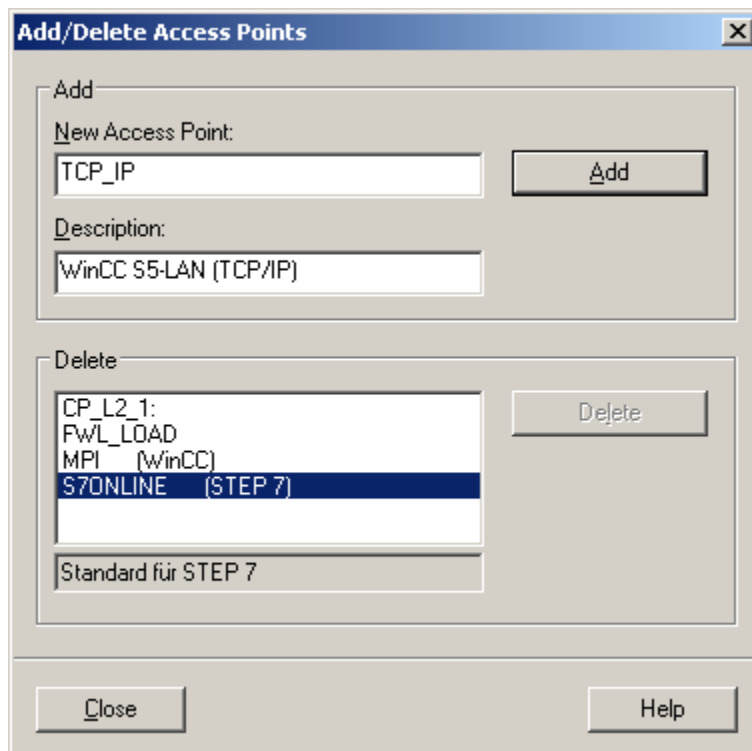


Figure 22: Add a new access point

This dialogue provides you the opportunity to add a new access point. Please name the new access point with »TCP_IP« and enter any description (e.g. »WinCC S5-LAN (TCP/IP)«). Click on »Add« and »Close« the dialogue afterwards.

Select the »TCP_IP« entry under »Application access point« and afterwards, select the »TCP/IP -> XXX« entry in the list »Used interface parameterization«, whereupon »XXX« stands for the used network card. Thereupon, the entry under »Application access point« changes into »TCP_IP -> TCP/IP -> XXX«. Save the settings by clicking »OK«.

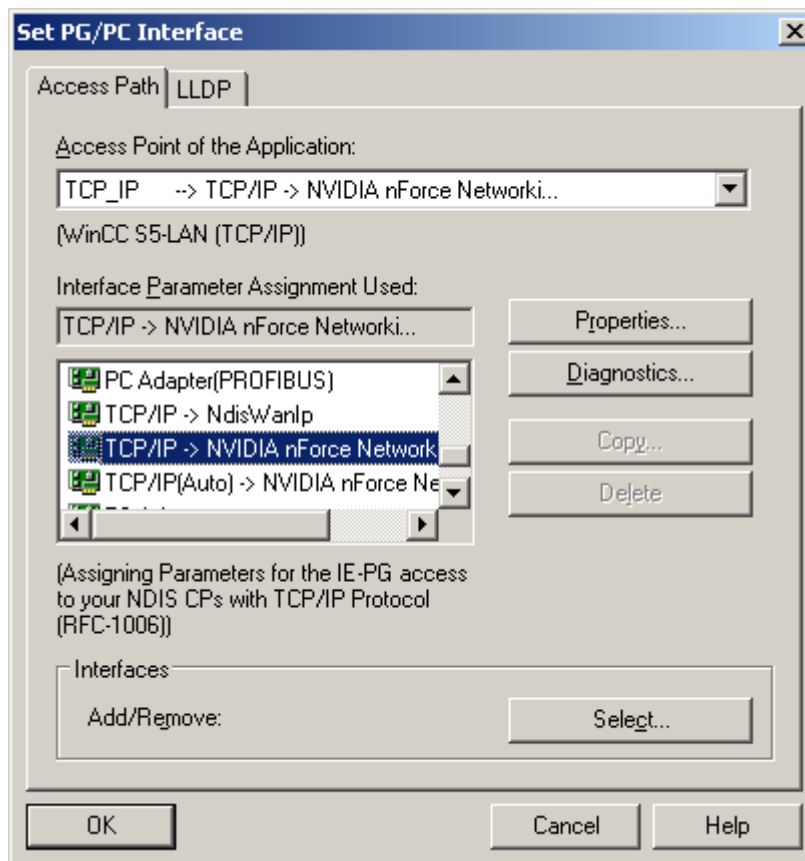


Figure 23: Set PG/PC interface

Afterwards, you start WinCC 6.0. Create a new project or open an existing project.

In the explorer (left half of the program), you can see different project contents. Below, the »Variable budget« as well. Right click on the »Variable budget« and select »Add new driver...« in the context menu.

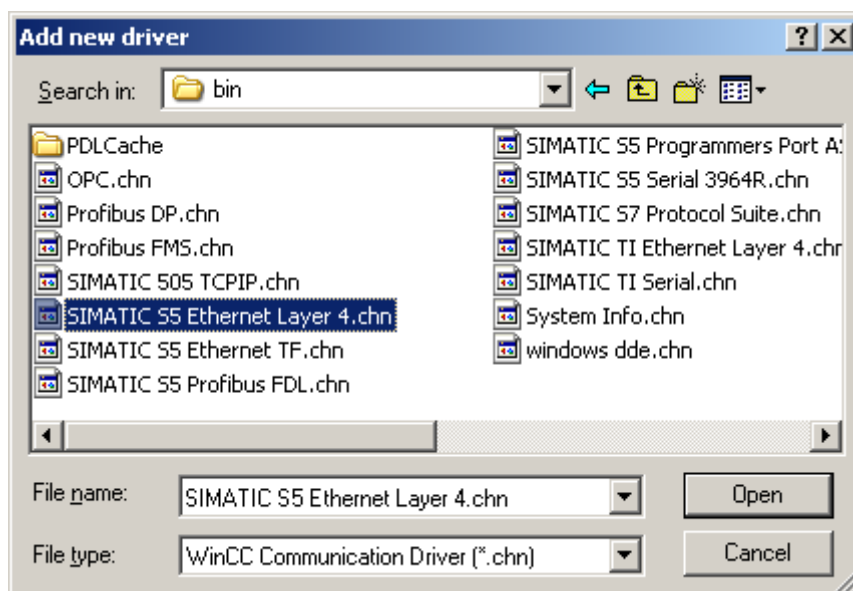


Figure 24: Add a new driver

Select the »SIMATIC S5 Ethernet Layer 4.CHN« file as communication driver. Via »Open«, you get back to the program and you can now find a change in the »Variable budget«.

Open the new leg »SIMATIC S5 ETHERNET LAYER 4« and right click on »S5-Transport (TCP/IP)«. In the context menu, select »New connection...«.

You name the connection in the properties dialogue (e.g. »ACCON-S5-LAN«) and use the »Properties« button to communicate the »IP Address« of the ACCON-S5-LAN to the connection.

In the »READ-Function« section, you activate the »Fetch Active« and assign the parameters »Local TSAP« and »Remote TSAP« as well as in the lower section. Confirm the connection parameters via »OK«.

Connection parameters

Transport Connection

IP Address: 192.168.1.56

READ Function

☒ Fetch Active, Request Type of remote PLC is READ-PASSIVE

☐ Fetch Passive, Request type of remote PLC is WRITE-ACTIVE

Local TSAP: DontCare Hex: 44.6F.6E.74.43.61.72.65

Remote TSAP: DontCare Hex: 44.6F.6E.74.43.61.72.65

WRITE Function, Request type of remote PLC is WRITE-PASSIVE

Local TSAP: DontCare Hex: 44.6F.6E.74.43.61.72.65

Remote TSAP: DontCare Hex: 44.6F.6E.74.43.61.72.65

Specify the IP address of the connection partner

OK Cancel Help

Figure 25: Connection parameters

Back in the main window of the application, a new connection in the »S5-Transport (TCP/IP)« leg of »SIMATIC S5 ETHERNET LAYER 4« should be visible.

The setup for a direct communication with WinCC is complete.

5.4. ACCON-S5-LAN and the DELTALOGIC S7/S5-OPC-Server

The DELTALOGIC S7/S5-OPC-Server provides the reading and writing access to data elements of a S7- and S5-PLC via the OPC-interface.

Before you get access to data elements, it is necessary to parameterize the connection data. This is made with the »S7OPCCfg.exe« program, which is included in the scope of delivery of the DELTALOGIC S7/S5-OPC-Servers.

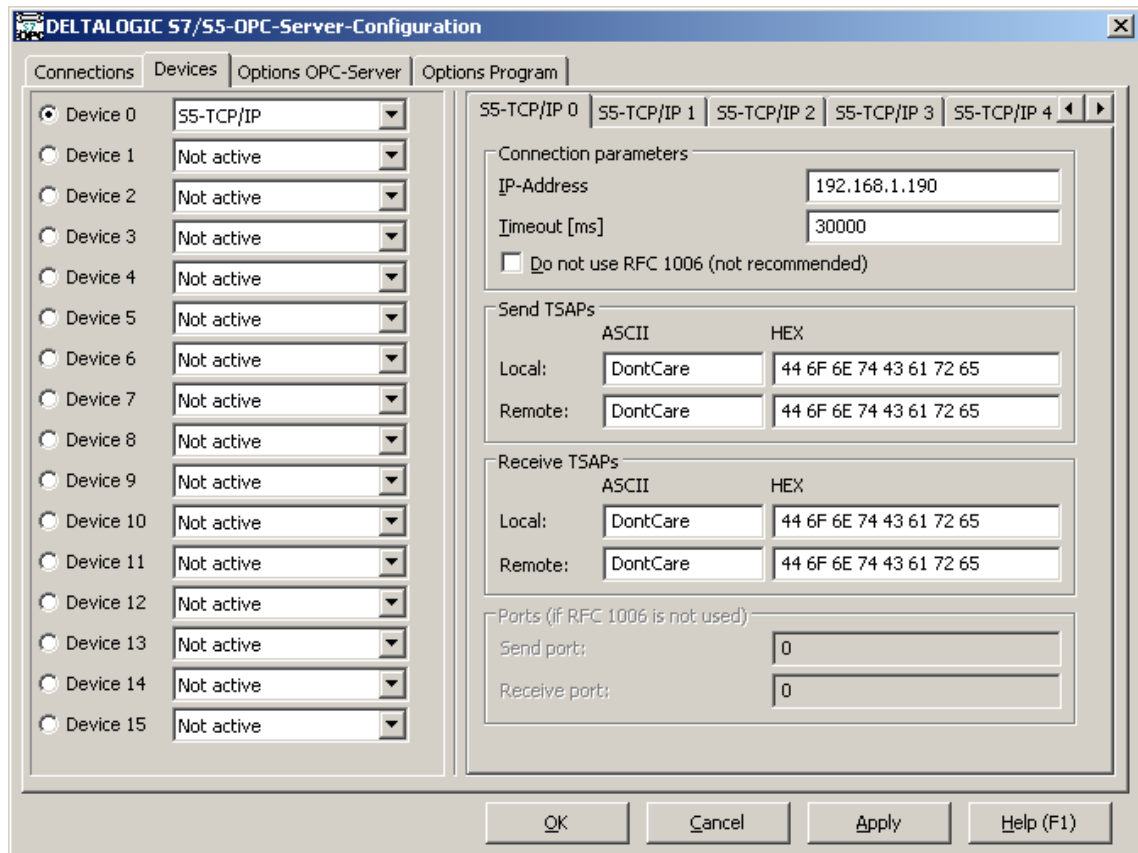


Figure 26: The program »S7OPCCfg.exe« to configure the connection

The group »Connection parameters« contains settings to the remote station.

The address of the Ethernet-CP at the S5 controller is setup under »IP-address«. »Timeout« sets the connection monitoring time. The value is indicated in milliseconds. When having communication problems, the value can be increased.

The »Not use RFC 1006« checkbox should be kept deactivated. This type of communication is not recommended!

In the groups »Send TSAPs« and »Receive TSAPs«, any text can be entered in the ASCII boxes »Local« and »Remote«!

The group »Ports« contains the port numbers, if the communication is not effected via RFC 1006.



Please consider the parameters as shown in Figure 26 and use the communication via RFC 1006.



*If you activate RFC 1006, you must configure the **Port 102** as S7/S5-Server-Port in the ACCON-S5-LAN.*

6. Technical data

Supported operating systems	No limitation (the driver for a virtual serial interface is only for Windows 98SE, Me, NT, 2000, XP)
Connection to the PC	RJ45 bushing for 10/100 Mbps Ethernet with automatic detection, no cable included
Connection to the PLC	TTY with 15-pin SUB-D plug
Supported PLCs	S5 of the U series
Dimensions (W x H x D) in mm	42 x 15 x 65
Protection type	IP 20
Supply voltage	24 VDC from PLC interface Not possible on some PLCs (e.g. S5-90U, S5-95U), needs a separate voltage feed
External voltage feed possible	Yes
Power consumption	Max. 80 mA
Galvanically isolated	No
Integrated multiplexer	Yes

7. Troubleshooting (FAQ)

Q: When connecting to my ACCON-S5-LAN (via PLC-VCOM), the following error message appears.

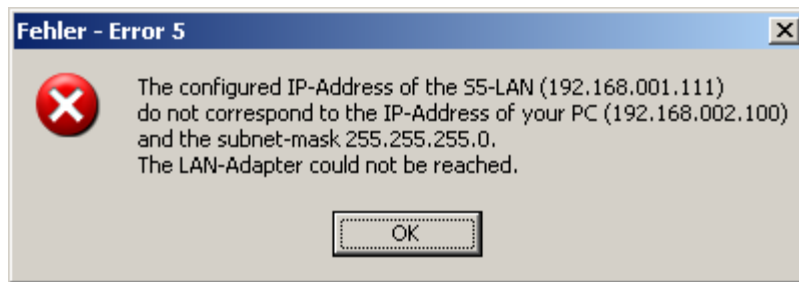


Figure 27: Error message on an erroneous IP address

A: The IP parameterization of your PC and your ACCON-S5-LAN do not suit. There are two solutions for this problem:

Solution 1: Change the IP address of the PC that way, that the PC and the ACCON-S5-LAN have the same IP net address. In this example, the IP address of the PC must be changed e.g. to 192.168.001.100.

Solution 2: Change the IP address of the ACCON-S5-LAN that way, that the PC and the ACCON-S5-LAN have the same IP net address. In this example, the IP address of the ACCON-S5-LAN must be changed e.g. to 192.168.002.111.

Q: I have connected the ACCON-S5-LAN to the COM-Port of my computer and to the interface of the PLC but the communication is not established or abort after a certain period of time.

A: There is a possibility to verify the COM-interface. Therefore, start the PLC-VCOM dialogue and right click on the icon in the left upper corner of the dialogue. Then select »Info«.

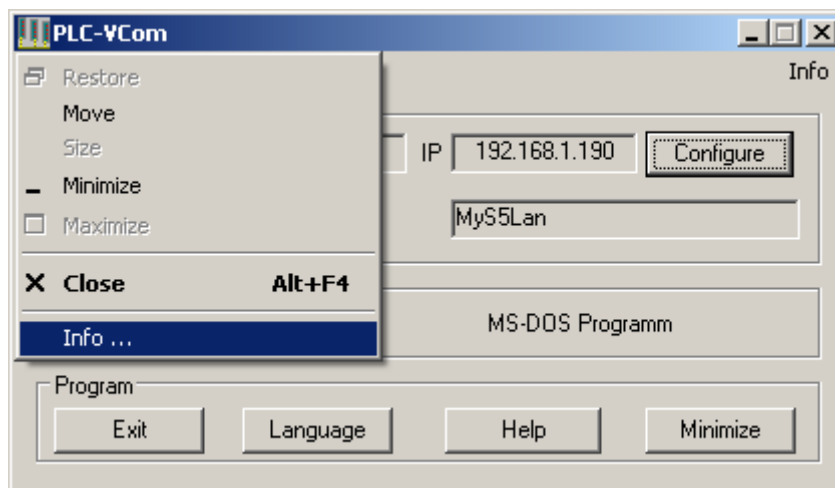


Figure 28: How to display the info dialogue of PLC-VCom

Thereupon, the following dialogue appears.

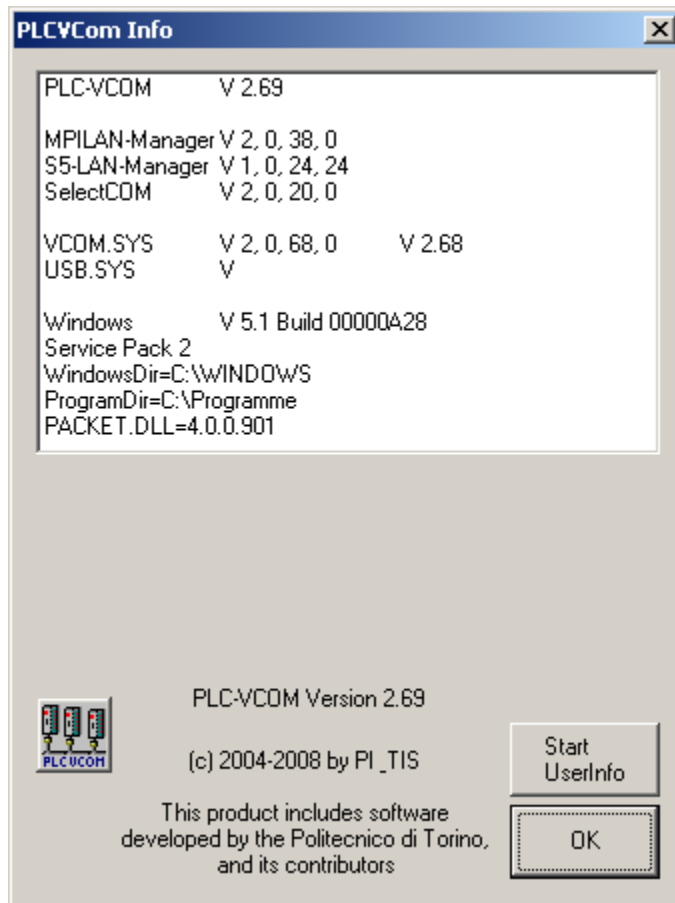


Figure 29: The info dialogue of PLC-VCom

Now, right click anywhere below the text block showing the version information. Thereupon, the dialogue »Log / Service« appears. This dialogue provides you the opportunity to access to the COM-Port.

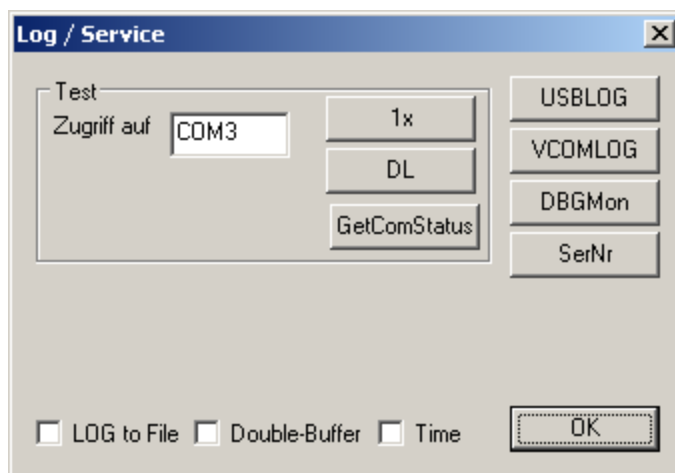


Figure 30: The dialogue to check the connection

In the input box »Access to«, please indicate the COM-Port your ACCON-S5-LAN is connected to. In order to access to the selected COM-Port, click on the »1x« button. If the communication aborts not until a certain period of time, click on »CO« (Continuous operation).

Both variants return the same error messages on an erroneous communication. Those are described in the following:

If the following error message appears, the COM-Port is accessible but the PLC or the ACCON-S5-LAN does not respond correctly.

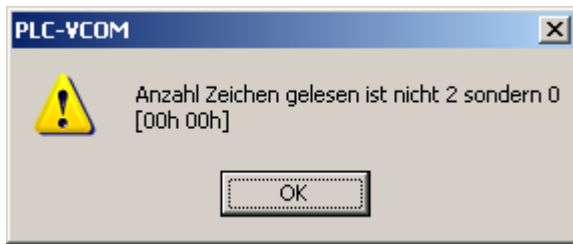


Figure 31: Error message on missing device

If this dialogue appears, please verify, whether the ACCON-S5-LAN is correctly installed.

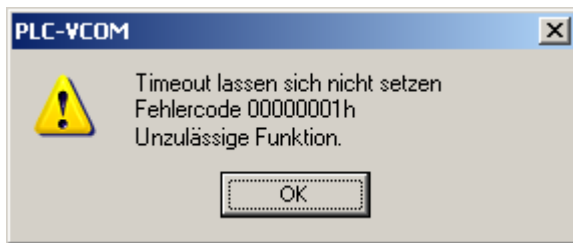


Figure 32: Error message on erroneous connection

If this dialogue appears, the COM-Port does not exist or is defect.



Figure 33: Error message on missing serial port