

Why Toshiba should be first on your list.



How to judge a Notebook by something other than its cover.

From the outside, most brands of Notebook look alike. So how do you choose between them? Is it just a matter of price? Or is there more to it than that? To help you make a decision, we thought we'd give you some inside information about our company and our technology.

The world's most popular Notebook.

Toshiba developed the world's first industry standard Notebook computer in 1985, and we've led the way ever since. In fact, our Notebooks are now the most popular in the world, with over 40 million sold – more than any other brand.

Notebooks that lead the way.

We pioneered many technologies that are now industry standards (including ever smaller hard disk drives, better and better screens, and more and more efficient batteries). You'll find some cool new technologies in this brochure, including fingerprint scanners, advanced screens, great sound systems and useful software.

Power stations. Space craft. Robots. Notebooks. TVs. All in a day's work.

We build power generation systems, advanced medical scanners, satellites, robots[#] and more. We also make countless electronic components - screens, silicon chips, memory and so on. There's more to Toshiba than Notebooks, and that's why there's more to our Notebooks.

Reliability that's built in.

At Toshiba, we believe that reliability is the single most important feature a Notebook can have. So we aim to build it in (because it's not something that can be bolted-on). The result? Our Notebooks have a class-leading reputation for reliability.

Last year, Toshiba patented over 1,250 inventions. So next year, our Notebooks will be even more advanced.

Specialists in mobile technology.

We're the only electronics company to focus so strongly on mobile technology. As a result, we're constantly developing ever more advanced devices. This brochure shows some of the results.

MEET THE TOSHIBA APRI-ALPHA ROBOT, VOTED ONE OF TIME MAGAZINE'S 'MOST AMAZING INVENTIONS OF THE YEAR' IN 2005. ApriAlpha is a prototype of a new class of robot that's designed to work very closely with people. It can recognise up to 100 different individuals, hold simple conversations, follow spoken instructions, read out e-mails and keep an eye on the kids. In a way, it too is a Toshiba mobile computer.



Introducing Windows® Vista™ – Microsoft's next generation operating system.

Toshiba's new range of Satellite Notebooks now come with Windows® Vista™ onboard. Microsoft's advanced new operating system puts you at the centre and adapts to your needs – a major step forward. Windows® Vista™ makes it easier, safer, and more entertaining to use your PC. And it makes it easier and faster than ever to find, use, manage, and share information. Toshiba's Notebooks come with one of two versions:



Windows® Vista™ Home Basic

Ideal for basic home computing, from viewing photos to writing emails and browsing the Internet. It enables you to quickly find almost everything on your PC, and provides more safety and security than any previous version of Windows.



Windows® Vista™ Home Premium

This fully featured edition features a breakthrough design, easy-to-use search and organisation tools, and offers a safer online experience. The built-in Windows Media Center and new mobility features give you more ways to enjoy digital entertainment at home or on the go.

It's what's inside

A behind the scenes look at our screens.

Toshiba plays a leading role in developing new screen technologies for mobile computers. The Satellite range features TruBrite™ screens. They offer:

Improved viewing angles

Normal LCD screens need to be viewed from directly in front. Toshiba's TruBrite™ screens can be viewed from much wider angles than standard LCD screens.

Improved colour and contrast

TruBrite™ technology uses a glare filter to reduce light scatter within the screen. This means brighter, richer colours.

Anti-reflective technology

TruBrite™ technology also reduces the reflections caused by bright lights so you can use your Satellite Notebook almost anywhere – even outdoors.

Brighter screens

TruBrite™ technology uses a special polariser to enhance brightness without using more power. The smooth surface also helps to increase contrast and clarity and reduce eye fatigue.



that counts.

A leader in DVD technology

Toshiba's DVD SuperMulti Double/Dual Layer drive is a leading edge device, and it's standard on many Satellite Notebooks. It supports up to 11 different formats - including all the main ones - so you can choose the best for each purpose.

- CD - Store up to 640MB of data.
- DVD single layer - Store up to 4.7GB of data (approx. 2 hours of digital video).
- DVD double + dual layer - Store up to 8.5GB of data (approx. 4 hours of digital video).
- DVD-RAM - a rewritable disk that can even be used as a second hard drive (convenient for back up).



Security – your finger is the key.

Picture a small scanner built into the keyboard of a Notebook. Skim your fingertip across it and the scanner reads the sub-surface pattern (no worries about cuts and calluses). Then it checks your print against a stored scan, confirms it's you and gives you access. It's simple. It's very secure. It deters thieves. It protects your data. And it can replace multiple passwords, simultaneously eliminating headaches. This amazing feature is now standard in most Satellite Notebooks.

Graphics with extra grunt.

Graphics are a big part of the Notebook experience. So we make sure ours really deliver. Each Satellite Notebook has enhanced graphics. And if you want serious power, you won't have to look far to find cards like the nVidia® GeForce Go™ 7900 GTX. This shares the capacity and bandwidth of both the dedicated graphics memory and the dynamically available system memory to turbocharge performance. The result? Games and graphics intensive applications (like video editing and design) are rendered like they're on fast-forward.

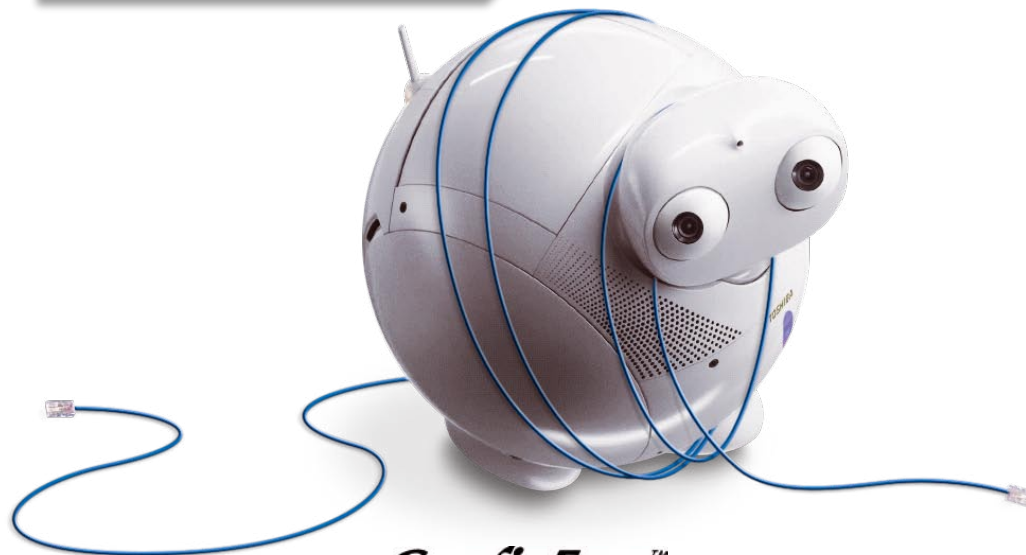


Speakers that make it easy to hear the difference.

Many Satellite Notebooks have harman/kardon® speakers. This is one of the most famous audio brands in the world – for good reason. They have Bass Reflex speakers to boost the bottom end, while the integrated audio software helps to create convincing 3D soundscapes and deliver exceptional clarity.

harman/kardon®

Toshiba makes it easy to avoid getting tangled up in networks.



ConfigFree™

Toshiba's unique ConfigFree™ software eliminates many of the hassles of dealing with networks of any sort – wired or wireless. Here's how.



Wireless Radar: ConfigFree™ checks for active Wi-Fi points and Bluetooth® devices that are within range and then uses a radar-like display to show those it has detected. You can then connect with a simple drag and drop.



Connectivity Doctor: ConfigFree™ makes it easy to analyse your network connections and quickly troubleshoot problems via a simple on-screen interface. Whether the problem's in the machine, the network or the Internet, the Doctor will diagnose the problem and help you cure it.



Summit: ConfigFree™ also lets you create a virtual meeting room on your Notebook and swap files with Toshiba-equipped colleagues. You can also chat via text. It even has a memo board for taking minutes. Useful?

Profile setting and switching: ConfigFree™ captures all of the connection settings for things like printers, networks and so on in locations you use frequently. Then, when you move from home to office and back (for example), ConfigFree™ automatically resets your profile. Easy.



Satellite M100

(PSMAAA-01M006)

Get off to a good start with this compact Notebook.

This M100 (PSMAAA-01M006) is a fantastic entry-level Notebook for first time buyers or those on a tight budget. It has a compact 14.1" widescreen display and enough power and features for most everyday tasks.

| Quick comparison chart | |
|------------------------|----------------------|
| Performance | ★★★ |
| Screen size | 14.1" TruBrite™ WXGA |
| Multimedia/graphics | ★★★ |
| Security/durability | 🔒🔒🔒 |



Satellite M100

(PSMAAA-020006)

Want to move up a step or two?

This M100 (PSMAAA-020006) is faster, loaded with features and light in weight. It has a compact 14.1" widescreen display and enhanced multimedia capabilities. It's a solid all rounder at an affordable price.

| Quick comparison chart | |
|------------------------|----------------------|
| Performance | ★★★★★★ |
| Screen size | 14.1" TruBrite™ WXGA |
| Multimedia/graphics | ★★★ |
| Security/durability | 🔒🔒🔒 |



Satellite M100

(PSMAAA-026007)

High performance without the high price.

This M100 (PSMAAA-026007) is the most powerful 14.1" widescreen Notebook in our range. It's a feature rich, light and compact desktop replacement that delivers serious performance and enhanced multimedia capabilities at an affordable price.

| Quick comparison chart | |
|------------------------|----------------------|
| Performance | ★★★★★★★★ |
| Screen size | 14.1" TruBrite™ WXGA |
| Multimedia/graphics | ★★★★★ |
| Security/durability | 🔒🔒🔒🔒 |
| Extra features | ★★★★ |



Highlights:

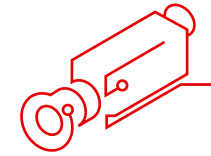
- + Intel® Pentium Processor T2060 (Dual Core 1.60GHz) gives you the performance you need to handle most everyday tasks.
- + BRAND NEW! Genuine Microsoft Windows® Vista™ Home Basic operating system.
- + 14.1" TruBrite™ Clear Super View widescreen (XGA) 1280 x 800 produces bright, high quality pictures and gives you a wide work area.
- + Intel® Graphics Media Accelerator 950 with up to 128MB shared system memory gives your graphics a good boost.
- + DVD SuperMulti Double/Dual Layer Drive lets you burn all mainstream disk formats – great for movie-making, archiving and backup.
- + Toshiba's unique ConfigFree™ utility makes it easy to access wireless and wired networks via a simple graphic interface.
- + Intersvideo™ WinDVD™/S-Video.
- + 1 year international parts and labour warranty. Domestic warranty includes onsite courier pickup and return service.

Highlights:

- + Intel® Core™ Duo Processor T2250 (Dual Core 1.73GHz) gives you the performance you need to make short work of most everyday tasks.
- + BRAND NEW! Genuine Microsoft Windows® Vista™ Home Basic operating system.
- + 14.1" TruBrite™ Clear Super View widescreen (XGA) 1280 x 800 produces bright, high quality pictures and gives you a wide work area.
- + Intel® Graphics Media Accelerator 950 with up to 128MB shared system memory gives your graphics a good boost.
- + DVD SuperMulti Double/Dual Layer Drive lets you burn all mainstream disk formats – great for movie-making, archiving and backup.
- + Toshiba's unique ConfigFree™ utility makes it easy to access wireless and wired networks via a simple graphic interface.
- + Make digital movies and burn them to disk with Ulead DVD Movie Writer for Toshiba.
- + 1 year international parts and labour warranty. Domestic warranty includes onsite courier pickup and return service.

Highlights:

- + Intel® Core™ Duo Processor T2350 (Dual Core 1.86GHz.) gives you the power to handle demanding applications.
- + BRAND NEW! Genuine Microsoft Windows® Vista™ Home Premium operating system.
- + 14.1" TruBrite™ Clear Super View widescreen (XGA) 1280 x 800 gives you lots of space to work in and produces bright, high quality pictures.
- + Intel® Graphics Media Accelerator 950 – with up to 128MB shared system memory gives your graphics a good boost.
- + DVD SuperMulti Double/Dual Layer Drive lets you burn all mainstream disk formats – great for movie-making, archiving and backup.
- + Intel® High Definition Audio and premium harman/kardon® speakers combine to produce soundscapes with exceptional bass and clarity.
- + Integrated fingerprint reader – to log-on, just swipe your fingertip across the scanner. No more forgotten passwords.
- + Integrated Intel® Pro Wireless boosts your wireless capabilities while Toshiba's unique ConfigFree™ utility makes it easy to connect to wireless and wired networks and troubleshoot connection problems.
- + 1 year international parts and labour warranty. Domestic warranty includes onsite courier pickup and return service.



Making movies with your Toshiba Notebook.

Toshiba's Satellite Notebooks let you connect your digital video recorder via an i.Link® port and download your files - fast. Then you can start making movies with the pre-loaded Windows® Movie Maker software. Once you've edited your footage, you can use the included Intersvideo™ WinDVD™ or Ulead DVD Movie Writer for Toshiba to burn DVDs. Finished? Now you can play them on your TV. Or send copies to friends, relatives, or agents in Hollywood.

**Lights? Camera? Notebook?
Now you're ready for action.**



Satellite A100

(PSAANA-04E005)

When you want more space to work or play.

This A100 (PSAANA-04E005) is an affordable full size desktop replacement that has a 15.4" widescreen display and offers solid performance, enhanced multimedia capabilities and an integrated finger-print scanner for extra security.



Get movies rolling quickly with Vista's HotStart feature.



| Quick comparison chart | |
|------------------------|----------------------|
| Performance | ★★★★★★ |
| Screen size | 15.4" TruBrite™ WXGA |
| Multimedia/graphics | ★★★★ |
| Security/durability | 🔒🔒🔒🔒 |
| Extra features | ★★ |

Highlights:

- ⊕ Intel® Core™ Duo Processor T2250 (Dual Core 1.73GHz) gives you the performance you need to make short work of most everyday tasks.
- ⊕ BRAND NEW! Genuine Microsoft Windows® Vista™ Home Premium operating system.
- ⊕ 15.4" TruBrite™ Clear Super View widescreen (XGA) 1280 x 800 - produces bright, high quality pictures and gives you a wide area to work in.
- ⊕ Intel® Graphics Media Accelerator 950 with up to 128MB shared system memory gives your graphics a good boost.
- ⊕ DVD SuperMulti Double/Dual Layer Drive lets you burn all mainstream disk formats – great for movie-making, archiving and backup.
- ⊕ Intel® High Definition Audio and premium harman/kardon® speakers combine to produce soundscapes with exceptional bass and clarity.
- ⊕ Integrated fingerprint reader – to log-on, just swipe your fingertip across the scanner. No more forgotten passwords.
- ⊕ Toshiba's unique ConfigFree™ utility makes it easy to access wireless and wired networks via a simple graphic interface.
- ⊕ 5-in-1 card reader - handy for transferring files or uploading images from a digital camera.
- ⊕ Gigabit Ethernet for fast network connection speeds.
- ⊕ 1 year international parts and labour warranty. Domestic warranty includes onsite courier pickup and return service.

Vista HotStart - a quicker way to bring films to life.

Microsoft's Vista operating system has a cool new feature that means you don't have to wait so long when you want to have fun. To cut a long story short, the HotStart function means you can access media players like your DVD player in a matter of moments simply by pressing a button. Now there's no need to wait for the entire system to load up before you can start playing. Meanwhile, Windows® Vista™ will keep loading in the background while you get on with what you want to do.



Satellite A100

(PSAARA-054007)

Plenty of muscle and no fat. No wonder it looks so good

This A100 (PSAARA-054007) features more power and an advanced graphics card that makes everything look good. It's a full-size 15.4" desktop replacement that's loaded with features like Bluetooth® V2.0 and delivers great performance at an affordable price.



| Quick comparison chart | |
|------------------------|----------------------|
| Performance | ★★★★★ ★★ |
| Screen size | 15.4" TruBrite™ WXGA |
| Multimedia/graphics | ★★★★★ ★★ |
| Security/durability | 🔒🔒🔒🔒🔒 |
| Extra features | ★★★★★ |



Make more connections with Toshiba Bluetooth® V2.0.

Some Satellite models include Bluetooth® technology. This short range wireless system lets you connect your Notebook to other mobile devices instantly - everything from projectors and printers to PDAs and network access points.

Bluetooth® is particularly handy when you're on the road. For example, you can connect your Notebook to a Bluetooth®-enabled mobile phone and pick up your e-mail from anywhere you can access a phone signal.

Toshiba was a founding member of the group that developed Bluetooth®, and we're committed to developing the technology even further. For instance, Bluetooth® V2.0 (available in some Satellites) features faster data transfer and connects to more devices than any other, thanks to Toshiba's own advanced Bluetooth® software.



Highlights:

- ⊕ Intel® Core™ Duo Processor T2350 (Dual Core 1.86GHz) gives you the power to handle demanding applications.
- ⊕ BRAND NEW! Genuine Microsoft Windows® Vista™ Home Premium operating system.
- ⊕ 15.4" TruBrite™ Clear Super View widescreen (XGA) 1280 x 800 gives you lots of space to work in and produces bright, high quality pictures.
- ⊕ nVidia® GeForce™ Go 7300 graphics card takes the graphics performance of the A100 to another level.
- ⊕ DVD SuperMulti Double/Dual Layer Drive lets you burn all mainstream disk formats – great for movie-making, archiving and backup.
- ⊕ Intel® High Definition Audio and premium harman /kardon® speakers combine to produce soundscapes with exceptional bass and clarity.
- ⊕ Integrated fingerprint reader – to log-on, just swipe your fingertip across the scanner. No more forgotten passwords.
- ⊕ Integrated Intel® Pro Wireless boosts your wireless capabilities while Toshiba's unique ConfigFree™ utility makes it easy to connect to wireless and wired networks and troubleshoot connection problems.
- ⊕ Toshiba Bluetooth® V2.0+EDR (Enhanced Data Rate) – gives you access to more devices with higher data rates.
- ⊕ 5-in-1 card reader - handy for transferring files or uploading images from a digital camera.
- ⊕ Gigabit Ethernet for network connection speeds.
- ⊕ 1 year international parts and labour warranty. Domestic warranty includes onsite courier pickup and return service.

Satellite A100

(PSAARA-055007)

Move up to the next level.

This A100 (PSAARA-055007) features the revolutionary new Intel® Core™ 2 Duo processor, a 15.4" high definition screen, dedicated graphics and a complete suite of features for the office or after-hours entertainment at home. It's a high-end performer without the high-end price.

Highlights:

- + Brand new Intel® Core™ 2 Duo Processor T5200 (Dual Core 1.60GHz). This is one of Intel's next generation dual core processors. They're amazingly fast and able to handle the most demanding applications – perfect for multimedia, graphics and games.
- + BRAND NEW! Genuine Microsoft Windows® Vista™ Home Premium operating system.
- + 15.4" TruBrite™ Clear Super View widescreen (XGA+) 1280 x 800. This screen gives you a fantastic workspace, and an even better playground.
- + nVidia® GeForce™ Go 7300 graphics card with up to 256MB video memory (128MB discrete and 128MB shared memory) – a high-end solution that gives the A100 serious credentials for graphics intensive applications.
- + DVD SuperMulti Double/Dual Layer Drive lets you burn all mainstream disk formats – great for movie-making, archiving and backup.
- + Intel® High Definition Audio and premium harman/kardon® speakers combine to produce 3D soundscapes with exceptional bass and clarity.
- + Toshiba Bluetooth® V2.0 EDR – access more devices at higher data rates.
- + Integrated Intel® Pro Wireless boosts your wireless capabilities while Toshiba's unique ConfigFree™ utility makes it easy to connect to wireless and wired networks and troubleshoot connection problems.
- + 5-in-1 card reader - handy for transferring files or uploading images from a digital camera.
- + Gigabit Ethernet for fast network connection speeds.
- + 1 year international parts and labour warranty. Domestic warranty includes onsite courier pickup and return service.



| Quick comparison chart | |
|------------------------|-------------------------------------|
| Performance | ★★★★★ ★★★ |
| Screen size | 15.4" TruBrite™ WXGA (wide view) |
| Multimedia/graphics | ★★★★★ ★★ |
| Security/durability | 🔒🔒🔒🔒 |



harman/kardon®



High Definition defined.

High Definition technology uses more lines of better quality image data to create a picture that is far superior to standard viewing technology. HD relies upon sophisticated scan formats to introduce a greater number of pixels that build a picture quickly and eliminate screen flicker.

The goal of this technology is to create the best possible picture for the viewing audience. The HD viewing experience is a revelation, with incredibly sharp pictures, rich detail and exceptional sound quality. It's now available on a Notebook near you.

Satellite A100

(PSAARA-057007)

Enjoy life at the top.

This is our most powerful A100 (PSAARA-057007). It features an even faster Intel® Core™ 2 Duo processor, a 15.4" high definition screen, a high end graphics card and an affordable price. It will help you get the most out of Microsoft's new Vista Home Premium operating system - or any other software you use, for that matter.



| Quick comparison chart | |
|------------------------|------------------------------------|
| Performance | ★★★★★ ★★★★★ |
| Screen size | 15.4" TruBrite™ XGA (wide view) |
| Multimedia/graphics | ★★★★★ ★★★★★ |
| Security/durability | 🔒🔒🔒🔒🔒 |
| Extra features | ★★★★★ ★★★ |



harman/kardon®



ConfigFree™



Highlights:

- + Intel® Core™ 2 Duo Processor T5500 (Dual Core 1.66GHz). This is amongst the fastest of Intel's new generation of processors, giving you top-of-the-line performance for processor intensive applications like multimedia, graphics and games.
- + BRAND NEW! Genuine Microsoft Windows® Vista™ Home Premium operating system.
- + 15.4" TruBrite™ Clear Super View widescreen (XGA+) 1280 x 800. This screen gives you a fantastic workspace, and an even better playground.
- + nVidia® GeForce™ Go 7600 with 256MB of video memory makes this a serious graphics machine, delivering fast rendering even at high resolutions.
- + DVD SuperMulti Double/Dual Layer Drive lets you burn all mainstream disk formats – great for movie-making, archiving and backup.
- + Intel® High Definition Audio and premium harman/kardon® speakers combine to produce 3D soundscapes with exceptional bass and clarity.
- + Massive 120GB hard disk drive capacity.
- + Toshiba Bluetooth® V2.0+EDR – gives you access to more devices and higher data rates.
- + Integrated Intel® Pro Wireless boosts your wireless capabilities while Toshiba's unique ConfigFree™ utility makes it easy to connect to wireless and wired networks and troubleshoot connection problems.
- + 5-in-1 card reader - handy for transferring files or uploading images from a digital camera.
- + Gigabit Ethernet for fast network connection speeds.
- + 1 year international parts and labour warranty. Domestic warranty includes onsite courier pickup and return service.

Satellite P100

(PSPAGA-014001)

For serious players.

The P100 (PSPAGA-014001) is a multimedia powerhouse. It features a super-fast Intel® Core™ 2 Duo processor, a 17" high definition screen and mind-blowing gaming and graphics capabilities thanks to its top-of-the-line nVidia® GeForce Go 7900 GTX card and 512MB of pumped up video RAM.

Highlights:

- ⊕ Brand new Intel® Core™ 2 Duo Processor T7400 (Dual Core 2.16GHz). This is the most powerful of Intel's next generation dual core processors. It's fast. Very fast. And able to handle the most demanding applications – perfect for multimedia, graphics and serious gameplay.
- ⊕ BRAND NEW! Genuine Microsoft Windows® Vista™ Home Premium operating system.
- ⊕ 17.0" TruBrite™ Clear Super View widescreen (SXGA+) 1680 x 1050. This ultra-rich resolution screen gives you bright, crisp, high contrast visuals for an immersive gaming experience – it's a fantastic work-space, and an even better playing field.
- ⊕ nVidia® GeForce™ Go 7900 GTX graphics card with 512MB of dedicated DDR3 video memory – a high-end solution that gives the P100 breakthrough computational and rendering capabilities for fluid game play and superb lighting effects.
- ⊕ DVD SuperMulti Double/Dual Layer Drive lets you burn all mainstream disk formats – great for movie-making, archiving and backup.
- ⊕ Intel® High Definition Audio with S/P Dif and premium harman/kardon® speakers combine to produce 3D soundscapes with exceptional bass and clarity.
- ⊕ The extra wide keyboard includes a number pad for fast input.
- ⊕ Vista remote control to run your entertainment centre.
- ⊕ Dual Mode™ TouchPad™ acts as both a mouse and a quick launch function for your applications. Simply tap to activate a range of shortcut buttons contained within the TouchPad™ itself.
- ⊕ Toshiba Bluetooth® V2.0 EDR – access more devices at higher data rates.
- ⊕ Integrated Intel® Pro Wireless boosts your wireless capabilities while Toshiba's unique ConfigFree™ utility makes it easy to connect to wireless and wired networks and troubleshoot connection problems.
- ⊕ 1 year international parts and labour warranty. Domestic warranty includes onsite courier pickup and return service.



harman/kardon®



ConfigFree™



Quick comparison chart

| | |
|---------------------|---------------------|
| Performance | ★★★★★ ★★★★★ |
| Screen size | 17" TruBrite™ SXGA+ |
| Multimedia/graphics | ★★★★★ ★★★★★ |
| Security/durability | 🔒🔒🔒🔒 |
| Extra features | ★★★★★ ★★★ |

If you want to play, don't muck around.

When we set out to make a Notebook for serious gamers, we aimed high. We gave the Satellite P100 everything we could think of to make it the ultimate go-anywhere gaming machine.

Display - a widescreen is a must if you're a gamer. And a big screen helps makes the experience more immersive. So we gave the P100 a widescreen 17" 1680 x 1050 pixel display. The result? Bright, high contrast pictures with crisp, finely textured detail.

Graphics - a high-end graphics card makes gameplay richer and smoother. So we fitted a top-of-the-line nVidia GeForce Go 7900 GTX and added a stack of dedicated video memory for fast frame rendering and clean, smooth game play.

Processor - performance is everything. So we fitted a top-end Intel® Core™ 2 Duo processor with a large cache and a wide frontside bus to help keep those frames pumping through the system.

System memory - fast access to memory helps keep the action coming, so we fitted DDR2 RAM in a dual-channel configuration for quick communication with no hold ups.

Sound - high quality sound can help make a good game great. So we fitted the P100 with harman/kardon speakers to help enhance the highs and the lows. And then we selected SRS TruSurround software to help create the feel of full surround sound from two speakers or through headphones.

Qosmio G30 with HD-DVD (PQ432A-02V01W)

When you want it all, and you want it now.

The Qosmio G30 is an ultra high performance Notebook and a revolutionary 4-in-1 entertainment centre. It's packed with powerful multimedia features, including a high definition digital TV tuner and the first-ever HD DVD-ROM in a Notebook. Plus it has a stunning 17.1" widescreen display for the ultimate high definition entertainment experience.



| Quick comparison chart | |
|--|-------------------------------------|
| Performance | ★★★★★ ★★★★★ |
| Screen size | 17.1" TruBrite™ UXGA (wide view) |
| Multimedia/graphics | ★★★★★ ★★★★★ |
| Security/durability | 🔒🔒🔒🔒🔒 |
| Extra features | ★★★★★ ★★★★★ |
| Also available : Qosmio F30 with 15.4" screen and standard definition DVD. | |



HD-DVD - the future of home entertainment.

Watching high-definition movies on a high definition screen is a revelation. The incredible picture detail and vibrant colours make it a remarkable experience.

Just like DVD, only much, much better.

Toshiba invented DVD. Now they've developed High Definition DVD - the next generation in the family of DVD products. Standard DVDs hold just 5GB of data. HD-DVDs hold an amazing 30GB - enough for all the extra information that makes high definition movies clearer, crisper and more intense. Plus there's still room for alternate endings, bonus scenes and all the other features that make DVDs great.

Coming soon to a screen near you.

If you want the ultimate movie experience, you can get it anywhere with a Qosmio G30 playing a high definition movie. These are now a reality. Over 200 will be released in the US alone this year. Plus the Qosmio G30's HD-DVD drive can still play any of the current standard formats, including all your CDs and DVDs.



Highlights:

- + Qosmio G30 is the world's first Notebook to feature the revolutionary new HD-DVD player (see panel).
- + BRAND NEW! Genuine Microsoft Windows® Vista™ Home Premium operating system.
- + Qosmio G30 features a digital TV tuner that supports high definition and analogue TV^^. Tune in to your favourite shows and enjoy crystal-clear high definition digital broadcasts – the latest TV broadcasting standard.
- + The 17.1" TruBrite™ widescreen (UXGA) 1920 x 1280 with 72% colour saturation delivers cinematic quality and a very wide viewing angle. It also features dual lamps for industry-leading screen brightness – ideal for viewing from across a room as well across a desk.
- + Toshiba's advanced Qosmio Engine employs innovative technology to deliver amazingly sharp images in vivid colour.
- + Graphics performance is boosted by an nVidia® GeForce™ Go 7600 graphics card with 256MB (DDR3) of dedicated video memory. Especially designed for multimedia.
- + Toshiba's Qosmio player bypasses the Windows® operating system so that you can get quick access to TV and digital entertainment at the touch of a button.

- + The sound system is driven by an advanced 1-bit digital amplifier – the world's first ever in a Notebook. It produces higher quality sound with low power loss.
- + Audio output is taken to new levels of quality by Dolby Home Theatre technology, SRS® TruSurround XT™ and industry-leading 30mm harman/kardon® speakers with bass reflection.
- + Intel® Core™ 2 Duo Processor T7400 (Dual Core 2.16GHz). This is the fastest and most powerful processor in Intel's armoury. It makes Qosmio the ultimate high performance Notebook.
- + Dual 160GB hard disk drives (320GB) give you vast storage space. They also let you set up automatic RAID backup – in effect, you mirror one disk on the other so that if you have data corruption or loss, you can restore quickly from the other hard disk drive.
- + Dual Mode™ TouchPad, remote control, Bluetooth® V2.0 with Enhanced Data Rate, integrated Intel® 802.11a/b/g wireless LAN and too many other features to list.
- + 1 year international parts and labour warranty. Domestic warranty includes onsite courier pickup and return service.

^^ User can only access either analogue or digital TV Tuner at one time.

gigashot R series

It can hold the equivalent of 25 feature films. Now all you have to do is shoot them.

Toshiba's new gigashot camcorders combine a video camera with a digital still camera in one handy package. The use of a hard disk drive to store images lets you do things that are impossible with tape - like take great digital photos and shoot video at exactly the same time. Or store up to 55 hours of video without downloading.

DIGITAL CAMCORDER

- + Record video direct to the built-in hard disk drive.
- + Select from three levels of image quality – including Super High Quality DVD resolution.
- + Record over 13 hours of DVD-quality video or up to 55 hours on Long Play (60GB model).
- + Shoot in standard format or widescreen for that cinematic feel.
- + 10x Canon optical zoom produces superb images.

2MB DIGITAL CAMERA

- + Shoot at three resolutions – up to 1600x1200 pixels (suitable for high quality A5 prints).
- + Store up to 32,000 still images 2MB in size (60GB model).
- + Separate REC buttons for video and camera mean you can shoot stills even while you're recording video.

VIDEO PLAYER

- + Plug gigashot into your TV and play back video direct from the hard disk drive.
- + Use the remote control (included) to operate your gigashot as easily as a video player.



- + Connect gigashot to a Toshiba DVD recorder with DVR and you can download your images to the hard disk drive and burn them to DVD.
- + Connect your gigashot to a Notebook or PC and download your images for editing, manipulation and burning.

VIDEO EDITOR

- + gigashot comes with image editing software for easy and convenient video editing on your Notebook or PC (package also includes photo manipulation software).
- + Hard disk drive technology makes it possible to edit in camera using onboard tools – handy for when you're out and about or in a hurry.

gigashot R series comparison

| | |
|-----------------------------|---|
| GSC-R30 | 30GB HDD. Holds up to 27 hours 40 minutes of video. |
| GSC-R60 (bundled with dock) | 60GB HDD. Holds up to 55 hours 30 minutes of video. |

Toshiba's Notebooks lead the industry in reliability.



Extra ways to protect your new Notebook.

Toshiba's standard warranty includes a courier pick-up and return service. If you'd like more protection for your investment, make yourself more comfortable with these options:

- + **Extended warranties:** extend your Notebook's warranty to 2 or 3 years – always a worthwhile investment.
- + **Onsite, next business day warranty upgrade:** you deal with a single person who takes responsibility for solving your problem. Choose from metro or regional options.
- + **Replacement Guarantee:** if your Notebook needs a warranty repair in the first 12 months on any major part (excluding quickly replaceable parts like the hard disk drive*), we will replace it with a new Notebook.

To invest in Toshiba's warranty upgrades, talk to your retailer, or call Toshiba's support centre on 1800 021 100 (AU) or 0800 445 439 (NZ).

* Quick replaceable parts include but not limited to the AC adaptor, external cables, keyboard, main battery, hard disk drive, optical drive, memory module, optical drive and accessories items.

For full details visit www.isd.toshiba.com.au/replacement

gigabeat V series and S series

Video player + jukebox + photo album + storage device + more. They really add up.

gigabeat portable media centres are advanced devices that can store and play back video, audio, photos and more. And still back-up as a data backup. The gigabeat V features a gorgeous 3.5" OLED screen - big enough for comfortably viewing movies in the palm of your hand. The ultra-compact gigabeat S features a 2.5" OLED screen and an FM radio with 60 station presets. Either way, you have a portable media centre that can hold days of video, weeks of music or a lifetime's memories.



Highlights:

- + Video player. Download video files from your PC or any PlayForSure™ site and then play them back anywhere. View in landscape format or output them through your TV.
- + Jukebox. Load your entire music library and take it anywhere.
- + Photo album. Plug gigabeat into your Notebook or PC and download your favourite photos or albums. Or download direct from your digital camera.
- + Back up. Connect gigabeat to your Notebook or PC to back up important files*.
- + Stream audio to XBOX 360 while you're playing games.
- + Organic Light Emitting Diode (OLED) full colour screens. This new screen technology gives you great playback quality and vivid colour reproduction for video, photos and album art. View in portrait or landscape mode.

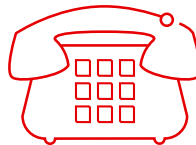
*Digital file size limits may apply refer to owners manual.

| gigabeat V and S series storage capacity | |
|--|---|
| 30GB (V and S series) | Holds up to 127 hours of video or 7,500 songs. |
| 60GB (S series only) | Holds up to 255 hours of video or 15,000 songs. |

You can rely on our Notebooks. You can also rely on our support.

Reliability is the single most important feature a Notebook can have. That's why we build it into every machine. And that's why our Notebooks have industry-leading levels of reliability.

Still, life as a mobile computer is tough, and sometimes things happen. So this is how we'll get you up and running again as quickly as possible.



In-country, in-house telephone support.

Our phone support staff are well trained and knowledgeable - they're familiar with our entire range. They can help you clear up most product and warranty issues. In fact, the service was rated Top 2 by a ROAM magazine survey*. Centre staff have a simple objective - solve the majority of Toshiba-connected queries during the first call.

*ROAM Magazine (AU) Nov/Dec edition 2005.

Australia: 1800 021 100
Mon-Fri 7am-7pm (AEST)
New Zealand: 0800 445 439
Mon-Fri 9am-7pm



MobileCare Centres

MobileCare service centres are staffed by Toshiba engineers and technicians. They're in-country, in-house and qualified to provide full warranty and service support for all Toshiba products.

Key MobileCare features include:

- + Three day repair target for standard warranty claims.
- + Walk-in locations in Sydney, Melbourne, Brisbane, Perth and Auckland.
- + SMS and e-mail job status updates.

Specifications

| ◇ MODEL | SATELLITE M100 PSMAAA-01M006 | SATELLITE M100 PSMAAA-020006 | SATELLITE M100 PSMAAA-026007 | SATELLITE A100 PSAANA-04E005 | SATELLITE A100 PSAARA-054007 |
|--|---|---|---|---|---|
| Processor* | Intel® Pentium™ Duo Processor T2060 | Intel® Core™ Duo Processor T2250 with Enhanced Intel Speedstep® Technology | Intel® Core™ Duo Processor T2250 with Enhanced Intel Speedstep® Technology | Intel® Core™ Duo Processor T2250 with Enhanced Intel Speedstep® Technology | Intel® Core™ Duo Processor T2250 with Enhanced Intel Speedstep® Technology |
| CPU speed* | Dual Core 1.60GHz | Dual Core 1.73GHz | Dual Core 1.86GHz | Dual Core 1.73GHz | Dual Core 1.86GHz |
| L2 Cache capacity | 1MB | 2MB | 2MB | 2MB | 2MB |
| Front side bus | 533MHz | 533MHz | 533MHz | 533MHz | 533MHz |
| Operating system** | Genuine Microsoft® Windows® Vista™ Basic | Genuine Microsoft® Windows® Vista™ Basic | Genuine Microsoft® Windows® Vista™ Home Premium | Genuine Microsoft® Windows® Vista™ Home Premium | Genuine Microsoft® Windows® Vista™ Home Premium |
| Hard disk drive** | 60GB (5400rpm) SATA | 80GB (5400rpm) SATA | 100GB (5400rpm) SATA | 80GB (5400rpm) SATA | 120GB (5400rpm) SATA |
| Memory * | 512MB DDR2 (533) 1 free memory slot. Total memory expandable to 2GB | 512MB DDR2 (533) 1 free memory slot. Total memory expandable to 2GB | 1GB (512+512MB) DDR2 (533) Both slots used. Total memory expandable to 4GB | 512MB DDR2 (533) 1 free memory slot. Total memory expandable to 4GB | 1GB (512+512MB) DDR2 (533) Both slots used. Total memory expandable to 4GB |
| Colour display* | 14.1" TruBrite Widescreen XGA (CSV) Active Matrix colour display | 14.1" TruBrite Widescreen XGA (CSV) Active Matrix colour display | 14.1" TruBrite Widescreen XGA (HB CSV) Active Matrix colour display | 15.4" TruBrite Widescreen XGA (CSV) Active Matrix colour display | 15.4" TruBrite Widescreen XGA (HB CSV) Active Matrix colour display |
| Resolution | 1280 x 800 | 1280 x 800 | 1280 x 800 | 1280 x 800 | 1280 x 800 |
| Video* | Intel® Graphics Media Accelerator 950 (945GM) with up to 128MB shared system memory (UMA) | Intel® Graphics Media Accelerator 950 (945GM) with up to 128MB shared system memory (UMA) | Intel® Graphics Media Accelerator 950 (945GM) with up to 128MB shared system memory (UMA) | Intel® Graphics Media Accelerator 950 (945GM) with up to 128MB shared system memory (UMA) | nVidia® GeForce™ Go 7300 with 256MB video memory (128MB discrete video memory and 128MB shared system memory using TurboCache technology) |
| ODD ² | DVD SuperMulti Double/Dual Layer Drive | DVD SuperMulti Double/Dual Layer Drive | DVD SuperMulti Double/Dual Layer Drive | DVD SuperMulti Double/Dual Layer Drive | DVD SuperMulti Double/Dual Layer Drive |
| Speed ² | Read: CD-ROM 24x, DVD-ROM 8x Write: CD-R 24x, CD-RW 4x, HS CD-RW 10x, DVD-R 8x, DVD-R DL 2x, DVD-RW 4x, DVD+R 8x, DVD+R DL 2.4x, DVD+RW 4x, DVD-RAM 5x | Read: CD-ROM 24x, DVD-ROM 8x Write: CD-R 24x, CD-RW 4x, HS CD-RW 10x, DVD-R 8x, DVD-R DL 2x, DVD-RW 4x, DVD+R 8x, DVD+R DL 2.4x, DVD+RW 4x, DVD-RAM 5x | Read: CD-ROM 24x, DVD-ROM 8x Write: CD-R 24x, CD-RW 4x, HS CD-RW 10x, DVD-R 8x, DVD-R DL 2x, DVD-RW 4x, DVD+R 8x, DVD+R DL 2.4x, DVD+RW 4x, DVD-RAM 5x | Read: CD-ROM 24x, DVD-ROM 8x Write: CD-R 24x, CD-RW 4x, HS CD-RW 10x, DVD-R 8x, DVD-R DL 2x, DVD-RW 4x, DVD+R 8x, DVD+R DL 2.4x, DVD+RW 4x, DVD-RAM 5x | Read: CD-ROM 24x, DVD-ROM 8x Write: CD-R 24x, CD-RW 4x, HS CD-RW 10x, DVD-R 8x, DVD-R DL 2x, DVD-RW 4x, DVD+R 8x, DVD+R DL 2.4x, DVD+RW 4x, DVD-RAM 5x |
| Audio | Intel® High Definition Audio | Intel® High Definition Audio | Intel® High Definition Audio | Intel® High Definition Audio | Intel® High Definition Audio |
| Speakers | Stereo speakers | Stereo speakers | Premium harman/kardon® speakers | Premium harman/kardon® speakers | Premium harman/kardon® speakers |
| ◇ EXPANSION | | | | | |
| PC Card / Express Card slot | One PC Card slot supports one Type II PC Card | One PC Card slot supports one Type II PC Card | One PC Card slot supports one Type II PC Card, Express Card | One PC Card slot supports one Type II PC Card, Express Card | One PC Card slot supports one Type II PC Card, Express Card |
| TV-OUT port | S-Video | S-Video | S-Video | S-Video | S-Video |
| SVGA Video port, headphone/microphone port | External Microphone port, Stereo Headphone port, Sound Volume Dial, SVGA (RGB) port | External Microphone port, Stereo Headphone port, Sound Volume Dial, SVGA (RGB) port | External Microphone port, Integrated Microphone, Stereo Headphone port, Sound Volume Dial, SVGA (RGB) port | External Microphone port, Integrated Microphone, Stereo Headphone port, Sound Volume Dial, SVGA (RGB) port | External Microphone port, Integrated Microphone, Stereo Headphone port, Sound Volume Dial, SVGA (RGB) port |
| USB ports | 4 x Hi-Speed USB 2.0 | 4 x Hi-Speed USB 2.0 | 4 x Hi-Speed USB 2.0 | 4 x Hi-Speed USB 2.0 | 4 x Hi-Speed USB 2.0 |
| Bridge media adaptor | 5-in-1 card reader Adapter (Secure Digital®, SD-I/O, Memory Stick™, Memory Stick PRO™, Multi Media Card, xD Picture Card [shared slots]) See Toshiba's website for capacity guidelines | 5-in-1 card reader Adapter (Secure Digital®, SD-I/O, Memory Stick™, Memory Stick PRO™, Multi Media Card, xD Picture Card [shared slots]) See Toshiba's website for capacity guidelines | 5-in-1 card reader Adapter (Secure Digital®, Memory Stick™, Memory Stick PRO™, Multi Media Card, xD Picture Card [shared slots]) See Toshiba's website for capacity guidelines | 5-in-1 card reader Adapter (Secure Digital®, Memory Stick™, Memory Stick PRO™, Multi Media Card, xD Picture Card [shared slots]) See Toshiba's website for capacity guidelines | 5-in-1 card reader Adapter (Secure Digital®, Memory Stick™, Memory Stick PRO™, Multi Media Card, xD Picture Card [shared slots]) See Toshiba's website for capacity guidelines |
| IEEE 1394 iLink port | IEEE 1394 | IEEE 1394 | IEEE 1394 | IEEE 1394 | IEEE 1394 |
| Remote Controller | - | - | - | - | - |
| Security | - | - | Integrated Biometrics - Fingerprint reader | Integrated Biometrics - Fingerprint reader | Integrated Biometrics - Fingerprint reader |
| Pointing device and buttons | TouchPad™ | TouchPad™ | TouchPad™ | TouchPad™ | TouchPad™ |
| Lifestyle buttons | CD / DVD play & control buttons | CD / DVD play & control buttons | CD / DVD play & control buttons | CD / DVD play & control buttons | CD / DVD play & control buttons |
| ◇ COMMUNICATION | | | | | |
| LAN | 10/100 Base TX Ethernet | Intel® GBit TX Ethernet | Intel® GBit TX Ethernet | Intel® GBit TX Ethernet | Intel® GBit TX Ethernet |
| Modem | International V.92 data modem + fax | International V.92 data modem + fax | International V.92 data modem + fax | International V.92 data modem + fax | International V.92 data modem + fax |
| Integrated Bluetooth™ | No | No | Toshiba Bluetooth™ V2.0 + EDR (Enhanced Data Rate) | Toshiba Bluetooth™ V2.0 + EDR (Enhanced Data Rate) | Toshiba Bluetooth™ V2.0 + EDR (Enhanced Data Rate) |
| Wireless networking* | Integrated Atheros 802.11bg | Integrated Intel® Pro Wireless 3945 802.11abg | Integrated Intel® Pro Wireless 3945 802.11abg | Integrated Intel® Pro Wireless 3945 802.11abg | Integrated Intel® Pro Wireless 3945 802.11abg |
| ◇ PHYSICAL DESCRIPTION | | | | | |
| Battery life* | Up to 3 hours* | Up to 3 hours* | Up to 3 hours* | Up to 3 hours* | Up to 3 hours* |
| Weight | 2.5kg (May vary with spec) | 2.5kg (May vary with spec) | 2.5kg (May vary with spec) | 2.7kg (May vary with spec) | 2.7kg (May vary with spec) |
| Dimensions (LxWxH)†† | 360 x 267 x 29.8(front)/36.8(rear) mm | 360 x 267 x 29.8(front)/36.8(rear) mm | 360 x 267 x 29.8(front)/36.8(rear) mm | 360 x 267 x 29.8(front)/36.8(rear) mm | 360 x 267 x 29.8(front)/36.8(rear) mm |
| LCD Lid Colour | Smart Indigo Blue | Smart Indigo Blue | Smart Indigo Blue | Onyx Metallic Blue | Onyx Metallic Blue |
| Software* | Toshiba User's Manual, Toshiba Value Added Package, Norton Internet Security™ 2007 (90 day trial), Ulead® DVD Factory for TOSHIBA, InterVideo® WinDVD™, ConfigFree™, Adobe Acrobat Reader 7.0, Windows Movie Maker. | Toshiba User's Manual, Toshiba Value Added Package, Norton Internet Security™ 2007 (90 day trial), Ulead® DVD Factory for TOSHIBA, InterVideo® WinDVD™, ConfigFree™, Adobe Acrobat Reader 7.0, Windows Movie Maker. | Toshiba User's Manual, Toshiba Value Added Package, Norton Internet Security™ 2007 (90 day trial), Ulead® DVD Factory for TOSHIBA, InterVideo® WinDVD™, ConfigFree™, Adobe Acrobat Reader 7.0, Windows Movie Maker. | Toshiba User's Manual, Toshiba Value Added Package, Norton Internet Security™ 2007 (90 day trial), Ulead® DVD Factory for TOSHIBA, InterVideo® WinDVD™, ConfigFree™, Adobe Acrobat Reader 7.0, Windows Movie Maker. | Toshiba User's Manual, Toshiba Value Added Package, Norton Internet Security™ 2007 (90 day trial), Ulead® DVD Factory for TOSHIBA, InterVideo® WinDVD™, ConfigFree™, Adobe Acrobat Reader 7.0, Windows Movie Maker. |
| Express Media Player | Vista HotStart | Vista HotStart | Vista HotStart | Vista HotStart | Vista HotStart |
| Warranty [§] | 1 year international parts and labour warranty. Domestic warranty includes onsite courier pickup and return service | 1 year international parts and labour warranty. Domestic warranty includes onsite courier pickup and return service | 1 year international parts and labour warranty. Domestic warranty includes onsite courier pickup and return service | 1 year international parts and labour warranty. Domestic warranty includes onsite courier pickup and return service | 1 year international parts and labour warranty. Domestic warranty includes onsite courier pickup and return service |
| ◇ OPTIONAL WARRANTY UPGRADES | | | | | |
| WAREXT [‡] | Extends 1 Year Standard Notebook Warranty to 3 years and includes 3 Years Courier Pick-Up and Return in Australia & NZ | | | | |
| SSWA-06013M [‡] | Plus 2 Years warranty, On-site Next Business Day Services- Metro (for Notebooks with 1 year std. warranty) available in Australia only | | | | |
| SSWA-06013R [‡] | Plus 2 Years warranty, On-site Next Business Day Services- Australia-wide (for Notebooks with 1 year std. warranty) available in Australia only | | | | |
| ◇ ACCESSORIES | | | | | |
| Toshiba 2GB USB Flash Drive | THNU302GCNP3C7 | THNU302GCNP3C7 | THNU302GCNP3C7 | THNU302GCNP3C7 | THNU302GCNP3C7 |
| Toshiba 1GB USB Flash Drive | THNU301GCNP3C7 | THNU301GCNP3C7 | THNU301GCNP3C7 | THNU301GCNP3C7 | THNU301GCNP3C7 |
| Additional AC Adaptor | PA2521E-2AC3B | PA2521E-2AC3B | PA2521E-2AC3B | PA2521E-2AC3B | PA2521E-2AC3B |
| External optional USB floppy disk drive | PA3109U-3FDD | PA3109U-3FDD | PA3109U-3FDD | PA3109U-3FDD | PA3109U-3FDD |
| Additional Toshiba 512MB memory | PA3412U-2M51 | PA3412U-2M51 | PA3412U-2M51 | PA3412U-2M51 | PA3412U-2M51 |
| Additional Toshiba 1024MB memory | PA3411U-2M1G | PA3411U-2M1G | PA3411U-2M1G | PA3411U-2M1G | PA3411U-2M1G |
| Toshiba battery pack | PA3478U-1BAS | PA3478U-1BAS | PA3478U-1BAS | PA3478U-1BAS | PA3478U-1BAS |
| Additional Bluetooth USB adaptor | PA3455U-1BTM | PA3455U-1BTM | PA3455U-1BTM | PA3455U-1BTM | PA3455U-1BTM |
| Toshiba mouse | PAUM011/TOSH | PAUM011/TOSH | PAUM011/TOSH | PAUM011/TOSH | PAUM011/TOSH |
| Toshiba keyboard | PAKB020v2/TOSH | PAKB020v2/TOSH | PAKB020v2/TOSH | PAKB020v2/TOSH | PAKB020v2/TOSH |
| Toshiba carry bag | TSB215/TOSH | TSB215/TOSH | TSB215/TOSH | TSB215/TOSH | TSB215/TOSH |

| MODEL | SATELLITE A100 PSAARA-055007 | SATELLITE A100 PSAARA-057007 | SATELLITE P100 PSPAGA-014001 |
|--------------------|---|---|---|
| Processor* | Intel® Core™ 2 Duo Processor T5200 with Enhanced Intel Speedstep® Technology | Intel® Core™ 2 Duo Processor T5500 with Enhanced Intel Speedstep® Technology | Intel® Core™ 2 Duo Processor T7400 with Enhanced Intel Speedstep® Technology |
| CPU speed* | Dual Core 1.66GHz | Dual Core 1.66GHz | Dual Core 2.16GHz |
| L2 Cache capacity | 2MB | 2MB | 4MB |
| Front side bus | 533MHz | 667MHz | 667MHz |
| Operating system** | Genuine Microsoft® Windows® Vista™ Home Premium | Genuine Microsoft® Windows® Vista™ Home Premium | Genuine Microsoft® Windows® Vista™ Home Premium |
| Hard disk drive** | 120GB (5400rpm) SATA | 120GB (5400rpm) SATA | 200GB (4200rpm) SATA |
| Memory* | 1GB (512+512MB) DDR2 (533) Both slots used. Total memory expandable to 4GB | 1GB (512+512MB) DDR2 (533) Both slots used. Total memory expandable to 4GB | 2GB (1+1GB) DDR2 (533) Both slots used. Total memory expandable to 4GB |
| Colour display* | 15.4" TruBrite Widescreen XGA (HB WW CSV) Active Matrix colour display | 15.4" TruBrite Widescreen XGA (HB WW CSV) Active Matrix colour display | 17.0" TruBrite Widescreen SXGA+ (HB WW CSV) Active Matrix colour display |
| Resolution | 1280 x 800 | 1280 x 800 | 1680 x 1050 |
| Video* | nVidia® GeForce™ Go 7300 with 256MB video memory (128MB discrete video memory and 128MB shared system memory using TurboCache technology) ¹ | nVidia® GeForce™ Go 7600 with 256MB discrete video memory ¹ | nVidia® GeForce™ Go 7900 GTX with 512MB discrete DDR3 video memory ¹ |
| ODD ² | DVD SuperMulti Double/Dual Layer Drive | DVD SuperMulti Double/Dual Layer Drive | DVD SuperMulti Double/Dual Layer Drive |
| Speed ² | Read: CD-ROM 24x, DVD-ROM 8x Write: CD-R 24x, CD-RW 4x, HS CD-RW 10x, DVD-R 8x, DVD-R DL 2x, DVD-RW 4x, DVD+R 8x, DVD+R DL 2.4x, DVD+RW 4x, DVD-RAM 5x | Read: CD-ROM 24x, DVD-ROM 8x Write: CD-R 24x, CD-RW 4x, HS CD-RW 10x, DVD-R 8x, DVD-R DL 2x, DVD-RW 4x, DVD+R 8x, DVD+R DL 2.4x, DVD+RW 4x, DVD-RAM 5x | Read: CD-ROM 24x, DVD-ROM 8x Write: CD-R 24x, CD-RW 4x, HS CD-RW 10x, DVD-R 8x, DVD-R DL 2x, DVD-RW 4x, DVD+R 8x, DVD+R DL 2.4x, DVD+RW 4x, DVD-RAM 5x |
| Audio | Intel® High Definition Audio | Intel® High Definition Audio | Intel® High Definition Audio with S/P Dif |
| Speakers | Premium harman/kardon® speakers | Premium harman/kardon® speakers | Premium harman/kardon® speakers (illuminated) |

| EXPANSION | SATELLITE A100 PSAARA-055007 | SATELLITE A100 PSAARA-057007 | SATELLITE P100 PSPAGA-014001 |
|--|--|--|---|
| PC Card / Express Card slot | One PC Card slot supports one Type II PC Card, Express Card | One PC Card slot supports one Type II PC Card, Express Card | One PC Card slot supports one Type II PC Card, Express Card |
| TV-OUT port | S-Video | S-Video | S-Video, DVI-D |
| SVGA Video port, headphone/microphone port | External Microphone port, Integrated Microphone, Stereo Headphone port, Sound Volume Dial, SVGA (RGB) port | External Microphone port, Integrated Microphone, Stereo Headphone port, Sound Volume Dial, SVGA (RGB) port | External Microphone port, Stereo Headphone port, S/P Dif (shared with headphone) port, Sound Volume Dial, SVGA (RGB) port |
| USB ports | 4 x Hi-Speed USB 2.0 | 4 x Hi-Speed USB 2.0 | 4 x Hi-Speed USB 2.0 |
| Bridge media adaptor | 5-in-1 card reader Adapter (Secure Digital®, Memory Stick™, Memory Stick PRO™, Multi Media Card, xD Picture Card (shared slots)) See Toshiba's website for capacity guidelines | 5-in-1 card reader Adapter (Secure Digital®, Memory Stick™, Memory Stick PRO™, Multi Media Card, xD Picture Card (shared slots)) See Toshiba's website for capacity guidelines | 6-in-1 card reader Adapter (Secure Digital®, SD-IO, Memory Stick™, Memory Stick PRO™, Multi Media Card, xD Picture Card (shared slots)) See Toshiba's website for capacity guidelines |
| IEEE1394 iLink port | IEEE 1394 | IEEE 1394 | IEEE 1394, Remote Control? |
| Remote Controller | - | - | Toshiba Media Centre Remote Control |
| Security | Integrated Biometrics - Fingerprint reader | Integrated Biometrics - Fingerprint reader | Integrated Biometrics - Fingerprint reader |
| Pointing device and buttons | TouchPad™ | TouchPad™ | Dual Mode Pad |
| Lifestyle buttons | CD / DVD play & control buttons | CD / DVD play & control buttons | CD / DVD play & control buttons |

| COMMUNICATION | SATELLITE A100 PSAARA-055007 | SATELLITE A100 PSAARA-057007 | SATELLITE P100 PSPAGA-014001 |
|-----------------------|--|--|--|
| LAN | Intel® GBit TX Ethernet | Intel® GBit TX Ethernet | Intel® GBit TX Ethernet |
| Modem | International V.92 data modem + fax | International V.92 data modem + fax | International V.92 data modem + fax |
| Integrated Bluetooth™ | Toshiba Bluetooth™ V2.0 + EDR (Enhanced Data Rate) | Toshiba Bluetooth™ V2.0 + EDR (Enhanced Data Rate) | Toshiba Bluetooth™ V2.0 + EDR (Enhanced Data Rate) |
| Wireless networking* | Integrated Intel® Pro Wireless 3945 802.11abg | Integrated Intel® Pro Wireless 3945 802.11abg | Integrated Intel® PRO Wireless 3945 (802.11abg) |

| PHYSICAL DESCRIPTION | SATELLITE A100 PSAARA-055007 | SATELLITE A100 PSAARA-057007 | SATELLITE P100 PSPAGA-014001 |
|---------------------------|---|---|---|
| Battery life ⁴ | Up to 3 hours* | Up to 3 hours* | Up to 3 hours* |
| Weight | 2.7kg (May vary with spec) | 2.7kg (May vary with spec) | 3.3kg (May vary with spec) |
| Dimensions (LxWxH)†† | 360 x 267 x 29.8(front)/36.8(rear) mm | 360 x 267 x 29.8(front)/36.8(rear) mm | 394 x 275 x 35.9/41.9mm |
| LCD Lid Colour | Onyx Metallic Blue | Onyx Metallic Blue | Onyx Metallic Blue |
| Software ⁵ | Toshiba User's Manual, Toshiba Value Added Package, Norton Internet Security™ 2007 (90 day trial), Ulead® DVD Factory for TOSHIBA, InterVideo® WinDVD™, ConfigFree™, Adobe Acrobat Reader 7.0, Windows Movie Maker. | Toshiba User's Manual, Toshiba Value Added Package, Norton Internet Security™ 2007 (90 day trial), Ulead® DVD Factory for TOSHIBA, InterVideo® WinDVD™, ConfigFree™, Adobe Acrobat Reader 7.0, Windows Movie Maker. | Toshiba User's Manual, Toshiba Value Added Package, Norton Internet Security™ 2007 (90 day trial), Ulead® DVD Factory for TOSHIBA, InterVideo® WinDVD™, ConfigFree™, Adobe Acrobat Reader 7.0, Windows Movie Maker. |
| Express Media Player | Vista HotStart | Vista HotStart | Vista HotStart |
| Warranty ⁶ | 1 year international parts and labour warranty. Domestic warranty includes onsite courier pickup and return service | 1 year international parts and labour warranty. Domestic warranty includes onsite courier pickup and return service | 1 year international parts and labour warranty. Domestic warranty includes onsite courier pickup and return service |

| OPTIONAL WARRANTY UPGRADES | SATELLITE A100 PSAARA-055007 | SATELLITE A100 PSAARA-057007 | SATELLITE P100 PSPAGA-014001 |
|----------------------------|---|------------------------------|------------------------------|
| WAREXT ³ | Extends 1 Year Standard Notebook Warranty to 3 years and includes 3 Years Courier Pick-Up and Return in Australia & NZ | | |
| SSWA-06013M ⁴ | Plus 2 Years warranty, On-site Next Business Day Services- Metro (for Notebooks with 1 year std. warranty) available in Australia only | | |
| SSWA-06013R ⁴ | Plus 2 Years warranty, On-site Next Business Day Services- Australia-wide (for Notebooks with 1 year std. warranty) available in Australia only | | |

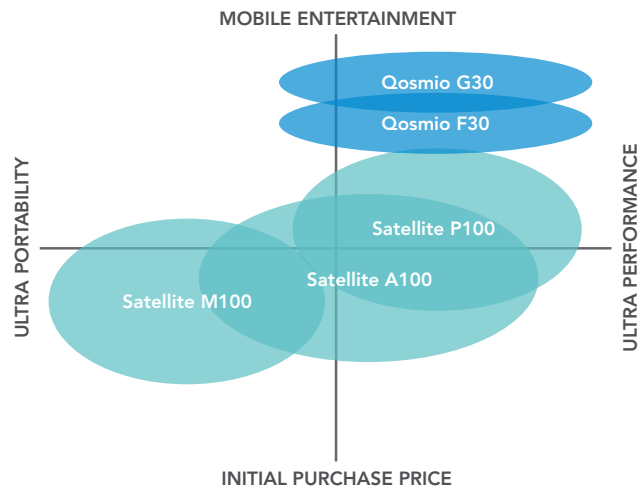
| ACCESSORIES | SATELLITE A100 PSAARA-055007 | SATELLITE A100 PSAARA-057007 | SATELLITE P100 PSPAGA-014001 |
|---|------------------------------|------------------------------|------------------------------|
| Toshiba 2GB USB Flash Drive | THNU302GCPN3C7 | THNU302GCPN3C7 | THNU302GCPN3C7 |
| Toshiba 1GB USB Flash Drive | THNU301GCPN3C7 | THNU301GCPN3C7 | THNU301GCPN3C7 |
| Additional AC Adaptor | PA2521E-2AC3B | PA2521E-2AC3B | PA3507E-1AC3B |
| External optional USB floppy disk drive | PA3109U-3FDD | PA3109U-3FDD | PA3109U-3FDD |
| Additional Toshiba 512MB memory | PA3412U-2M51 | PA3412U-2M51 | PA3412U-2M51 |
| Additional Toshiba 1024MB memory | PA3411U-2M1G | PA3411U-2M1G | PA3411U-2M1G |
| Toshiba battery pack | PA3478U-1BAS | PA3478U-1BAS | PA3480U-1BAS |
| Additional Bluetooth USB adaptor | PA3455U-1BTM | PA3455U-1BTM | PA3455U-1BTM |
| Toshiba mouse | PAUM011/TOSH | PAUM011/TOSH | PAUM011/TOSH |
| Toshiba keyboard | PAK8020v2/TOSH | PAK8020v2/TOSH | PAK8020v2/TOSH |
| Toshiba carry bag | TSB215/TOSH | TSB215/TOSH | TXL617 |

Ooh la la!
What a magnificent
set of specs.



Toshiba (Australia) Pty. Limited ABN 19 001 320 421 NB: *Toshiba Notebooks are subject to technology limitations. It is important that you understand Toshiba's policy for Central Processing Unit (CPU) performance, non-conforming screen pixels, gigabyte measurement, VRAM capacity, battery life variance and other specific technologies. For further details and specifications, you are recommended to visit Toshiba's website www.isd.toshiba.com.au or phone Toshiba on 13 30 70 (Australia) 0800 441 615 (New Zealand). **The NVIDIA GeForce Go 7000 series GPU utilizes the additional bandwidth of PCI Express to reach higher levels of graphics performance than traditional graphics memory solutions. NVIDIA GeForce Go G7000 series GPU shares the capacity and bandwidth of dedicated graphics memory and dynamically available system memory for turbocharged performance and larger total graphics memory. The VRAM capacity indicated in display properties is the sum of the discrete graphics memory and the maximum possible graphics memory allocated dynamically by the system memory. The system memory capacity indicated in the Microsoft® Windows® PROPERTIES display is the maximum possible system memory capacity without adjustment for any system memory which may be dynamically allocated to the graphics system depending on demand. †CD/DVD write capability may vary depending on the type/brand of media utilized. ††The spill resistant keyboard concept will help safeguard the notebook from certain small volume accidental spills and allow users several minutes to close any open files and turn off the machine. The shock protection system provides your notebook with a higher impact protection and reliability to your key hardware components. ††Certain Microsoft® software product(s) included with this computer may use technological measures for copy protection. IN SUCH EVENT, YOU WILL NOT BE ABLE TO USE THE PRODUCT IF YOU DO NOT FULLY COMPLY WITH THE PRODUCT ACTIVATION PROCEDURES. Product activation procedures and Microsoft's privacy policy will be detailed during initial launch of the product, or upon certain re-installations of the software product(s) or reconfigurations of the computer, and may be completed by Internet or telephone (toll charges may apply). Some software may differ from its retail version (if available), and may not include user manuals or all program functionality. ††Thickness may vary at certain points on the system. †Terms and conditions apply, see www.isd.toshiba.com.au or your Toshiba Reseller for details. All images are for illustration purposes only. The product you have selected may not have all the features and specifications corresponding to all of the icons or switches shown in the illustration or in store display. Because of the dynamic nature of this industry, versions, product details and availability are subject to change on a continual basis without prior notice. You are recommended to visit Toshiba's website www.isd.toshiba.com.au or phone Toshiba on 13 30 70 (Australia) 0800 441 615 (New Zealand) or your Authorised Retailer to confirm product specifications, capability, and functionality before purchasing your unit. Specifications subject to change without notice. Trademarks as indicated are registered trademarks and are the property of the respective owners. Toshiba Australia Information Systems Division 02/07

Which Toshiba is right for you?



This chart may help you home in on the right Notebook. If you want a light and highly mobile machine, focus on the left hand side. If you want leading-edge performance, head to the right.

If you're on a budget, concentrate on those at the bottom of the table. If you want a Notebook that also doubles as a full-on entertainment centre or multimedia powerhouse, head to the top.

How green is your Toshiba?



At Toshiba, we are committed to reducing our impact on the environment. For example, every Notebook in the Satellite range fully complies with the European Union's new Restriction of Hazardous Substances regulations. These are the world's toughest. In fact, a Toshiba Notebook was the first in the world to fully comply.

We're also active in other areas. We work with Landcare Australia. We've set up systems to help you recycle your old technology. And we can help you pass pre-loved Notebooks to people who need them – schools, charities and so on.



TOSHIBA

Toshiba Ecycle Program

To recycle old Toshiba Notebooks, see your nearest MobileCare service centre. For locations, contact Toshiba on 13 30 70 or visit <http://www.isd.toshiba.com.au>



Landcare Australia

We partner with Landcare Australia. You can find out more at <http://www.landcareaustralia.com.au>

Toshiba has sold over 40 million Notebooks. That's more than anyone else in the whole world (but hey, who's counting?).

Contact us for Sales & General Inquiries:

Australia: Call 13 30 70
New Zealand: Call 0800 441 615
Services operate from Monday to Friday from 8:00 am to 6:00 pm (Australia) and from 9:00 am to 6:00 pm (New Zealand) excluding national public holidays.

Contact us for warranty, service & support:

Australia: Call 1800 021 100
New Zealand: Call 0800 445 439
Services operate from Monday to Friday from 7:00 am to 7:00 pm Australia Eastern Standard Time excluding national public holidays.

Contact us via e-mail: isdsales@toshiba-tap.com

CLAIMING A CASH BACK OFFER

If you have purchased a Toshiba Notebook that features a Cash Back offer and you'd like to know how to claim, please visit www.isd.toshiba.com.au/redemption



TOSHIBA