

Subsidiaries

ARGENTINA
SDMO ARGENTINA S.A.
TEL./FAX +54 114 836 3511

BELGIUM
SDMO NV/SA
TEL. +32 3 646 04 15 - FAX +32 3 646 06 25

BRAZIL
SDMO DO BRAZIL
TEL. / FAX +55(11) 4390 8434

NIGERIA
SDMO LAGOS
TEL +234 (0)1 776 95 95 - FAX + 33 (0)1 72 27 55 62

SPAIN
SDMO INDUSTRIES IBERICA
TEL. +34 90 230 56 56 - FAX +34 93 580 31 36

UNITED KINGDOM
SDMO ENERGY LTD
TEL. +44(0) 1932 345 777 - FAX +44(0) 1932 350 033

UNITED STATES
SDMO GENERATING SETS
TEL. +1 305 863 00 12 - FAX +1 305 863 97 81

Offices

SOUTH AFRICA
SDMO JOHANNESBURG
TÉL. +33(0)6 31 59 47 01 - FAX +33(0)1 72 27 61 51

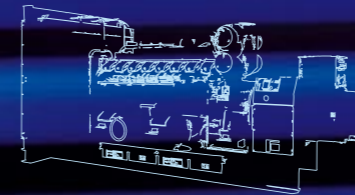
ALGERIA
SDMO ALGER
TÉL. +213 21 92 55 84 - FAX +213 21 92 47 76

DUBAÏ
SDMO MIDDLE EAST
TÉL. + 971 50 294 96 94 - FAX +33 1 722 755 75

RUSSIA
SDMO MOSCOW
TÉL. +7 926 838 05 34 - FAX +33(0)1 72 27 55 48



SDMO Industries - 12 bis rue de la villeneuve
CS 92 848 - 29 228 Brest Cedex 2 - France
Tel. +33 (0)2 98 41 41 41 - Fax +33 (0)2 98 41 63 07
www.sdmo.com



Power products

ENGLISH

PPRPAC/GB-2007/1
50HZ 60HZ
1275kVA - 2200kVA
1091kWe - 2000kWe



Global Power
Solution™

ISO 9001



SDMO Industries
Implantation en France

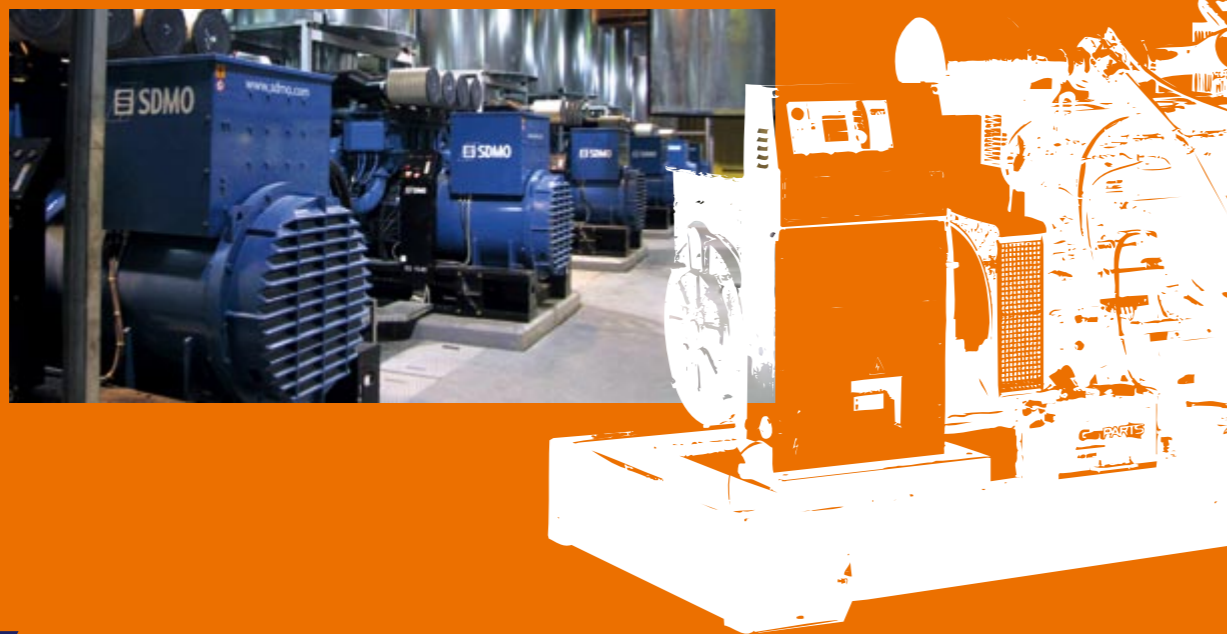
A powerful response energy required

SDMO is renowned as one of the top manufacturers of gensets worldwide. SDMO has channelled all its energy into designing a range which is both highly-competitive and high-performance, the largest range available on the market. As a response to the increasingly precise nature of your energy requirements, which relate directly to the special traits of your particular industry, SDMO is devoting the majority of its resources to the continuous improvement of its range and services.



The result of a strategy focussed on a single industry: our exacting professionalism provides you with a reliable source of energy, observing the strictest of standards. The pioneering mindset of their teams, and the mastery and flexibility of their production methods mean that SDMO is constantly innovating. The proximity of their distribution network and dynamism of their customer services policy enable SDMO to be a powerful force and provide the basis of the company's values.

**SDMO, the source of energy for your comfort and safety.
SDMO, providing the energy that links mankind.**



SDMO

PPRPAC/GB-2007/1

50HZ 60HZ

1275kVA - 2200kVA

1091kWe - 2000kWe

whatever the

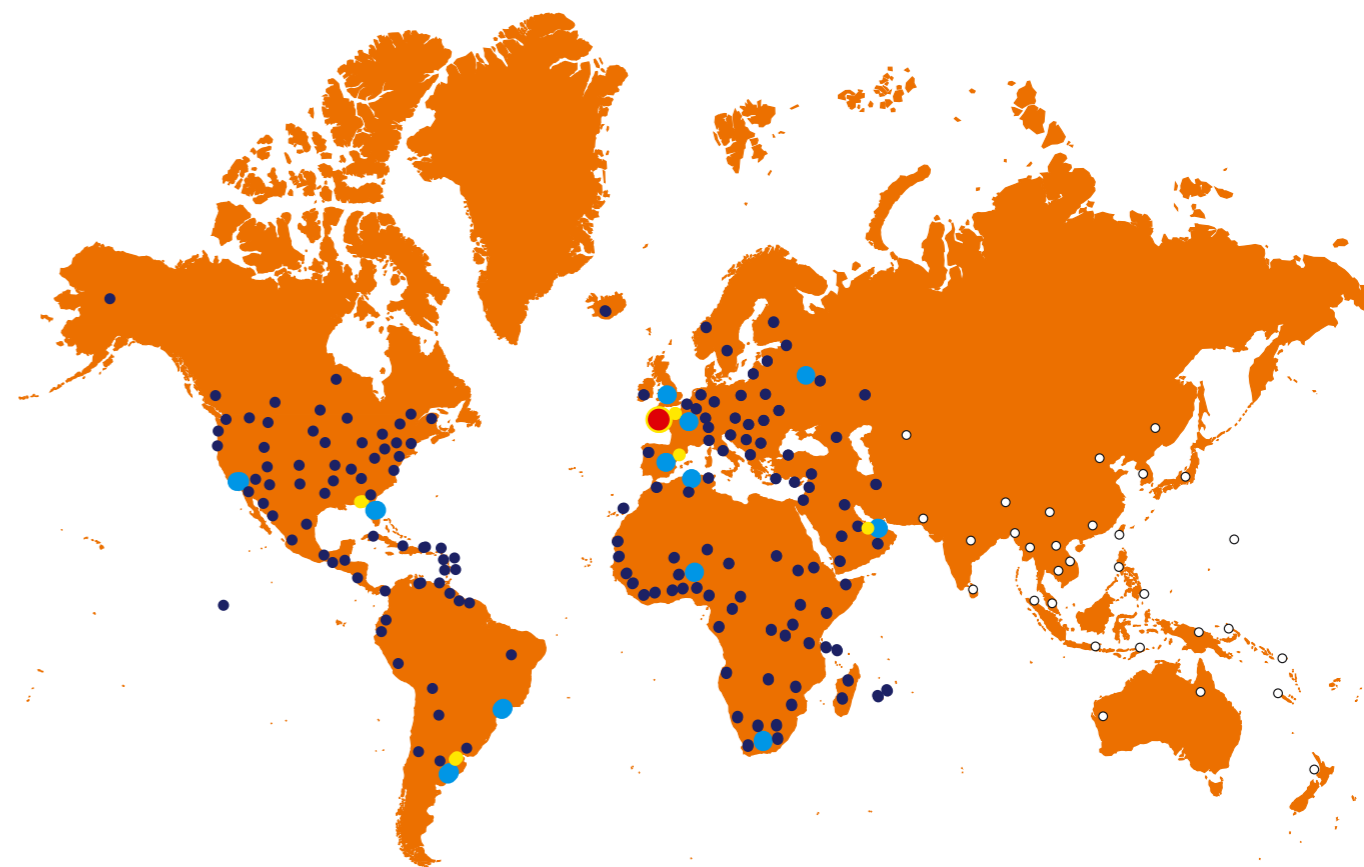
Whether you require emergency power to be able to cope with possible energy cuts (e.g. hospitals, shopping centres) or continuous power when conventional electrical grids are faulty (power plants), SDMO will be able to offer you performance products from a large range which meets all the requirements of different markets.

**National coverage,
international presence,
“think globally,
act locally”**

In order that SDMO can continue to grow and expand into new markets, it relies on:

- a distribution network present in over 150 countries,
- 7 overseas subsidiaries,
- 4 representation offices,
- 7 sales offices and 3 regional divisions in France.

... and 5 storage platforms, which together make for an efficient commercial network.



● SDMO Head Office ● SDMO subsidiaries ● Agents/Distributors ● SDMO stocks

**The SDMO service
department has been
working to optimise
the performances of
products and to ensure
the safety of all.**

Technical assistance to ensure the reliability of our products

So that you are never without energy, now and in the future, the After-Sales team will respond to, in the shortest time possible, any technical question or difficulty encountered with a genset from the moment it is installed.

**Spare Parts Department:
an efficient, well-integrated network**

Components are delivered as quickly as possible at the best prices.

Training to produce better levels of response

The means to acquire and update knowledge.

PACIFIC range 50Hz



The gensets from the PACIFIC range are the winning combination between robustness and easy use



T1400



T1540

TECHNICAL SPECIFICATIONS

50Hz range

RANGE	Specifications 50 Hz 400-230 V				Engine specifications								Alternator Type	Compact version ⁽⁴⁾	
	GENE-RATING SETS ⁽¹⁾	kVA Cos 0,8		Cons 3/4 L/h	Engine type	cyl	Bore (mm)	Stroke (mm)	Cyl (L)	Dimensions LxIxh (m)	Weight ⁽⁵⁾ (kg)	Version Compact ⁽⁵⁾			
		PRP ⁽²⁾	ESP ⁽³⁾									Dimension LxIxh (m)		Weight ⁽⁶⁾ (kgs)	
PACIFIC II	T1400	1275	1403	208	S12R-PTA	12	170	180	49,03	501M7	4,33x2,00x2,37	9781			
	T1540	1400	1540	218	S12R-PTA2	12	170	180	49,03	501L8	4,42x2,00x2,37	10147			
	T1900	1727	1900	266	S16R-PTA	16	170	180	65,37	512S55	5,50x2,29x2,48	12891			
	T2100	1909	2100	304	S16R-PTA2	16	170	180	65,37	512M60	5,60x2,29x2,48	13314			
	T2200	2000	2200	307,3	S16R-PTAA2	16	170	180	65,37	512M60	5,50x2,29x2,58	14371			

(1) Also available in the following voltages: 415/240 V - 380/220 V

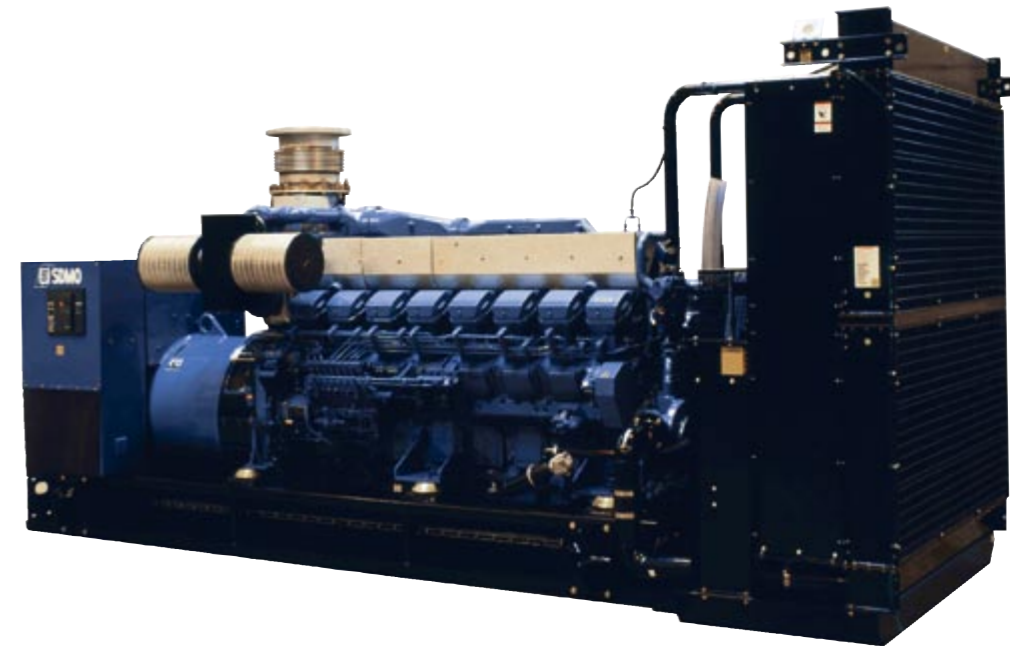
(2) PRP: Prime power available continuously at variable load for an unlimited number of hours per year in accordance with ISO 8528-1, an overload of 10% is available for one hour in 12 hours in accordance with ISO 3046-1

(3) ESP: Standby power available for emergency use at variable load in accordance with ISO 8528-1, no overload available with this service.

(4) The dimensions and weights apply to a generating set specified in the price list, without options

(5) Dry weight - without fuel

PACIFIC range 60Hz



T1800U



T2000U

CARACTERISTIQUES TECHNIQUES

60Hz range

RANGE	Specifications 60 Hz 480-277 V				Engine specifications								Alternator Type	Version Compact ⁽⁵⁾	
	GENE-RATING SETS ⁽¹⁾	kWe ISO 8528 ⁽²⁾		Cons 3/4 L/h	Engine type	cyl	Bore (mm)	Stroke (mm)	Cyl (L)	Dimensions LxIxh (m)	Weight ⁽⁶⁾ (kgs)	Version Compact ⁽⁵⁾			
		PRP ⁽³⁾	ESP ⁽⁴⁾									Dimension LxIxh (m)		Weight ⁽⁶⁾ (kgs)	
PACIFIC II	T1200U	1091	1200	229	S12R-PTA	12	170	180	49,03	501M7	4,33x2,00x2,37	9781			
	T1350U	1228	1350	250	S12R-PTA2	12	170	180	49,03	501L8	4,42x2,00x2,37	10147			
	T1600U	1455	1600	294	S16R-PTA	16	170	180	65,37	512S55	5,50x2,29x2,48	12891			
	T1800U	1636	1800	346	S16R-PTA2	16	170	180	65,37	512S55	5,50x2,29x2,48	12991			
	T2000U	1818	2000	357	S16R-PTAA2	16	170	180	65,37	512M60	5,50x2,29x2,58	14371			

(1) Also available in the following voltages: 440/254 V

(2) ISO 8528 : powers specified in compliance with the legislation in force

(3) PRP: Prime power available continuously at variable load for an unlimited number of hours per year in accordance with ISO 8528-1, an overload of 10% is available for one hour in 12 hours in accordance with ISO 3046-1

(4) ESP: Standby power available for emergency use at variable load in accordance with ISO 8528-1, no overload available with this service.

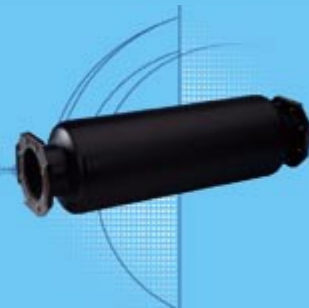
(5) The dimensions and weights apply to a generating set specified in the price list, without options

(6) Dry weight - without fuel

	Basic and options	PACIFIC II
engine	4 stroke water-cooled diesel engine	•
	Mechanical adjustment	•
	Standard air filter	•
	Air filter with interchangeable cartridge ¹	EN 02
alternator	220/240V preheating resistance (no control)	EN 20
	IP 23 single bearing alternator, T' class=H, insulation class H/H	•
	Anti condensation resistor	AL 01
	Reinforced insulation	•
	Reinforced insulation and finish	AL 06
	Stator PTC sensor	AL 07
	Bearing PTC sensor	AL 08
	Stator PT 100 sensor	AL 09
	Bearing PT 100 sensor	AL 10
	Synchronizing CT coupling + 3 function regulator	O ¹⁾
generating set	Oversized alternator	AO 001B
	CE compliance of the control unit	•
	Mechanically welded chassis with antivibration suspension	•
level	Supplied in colour RAL 9005/5007 (black/blue) delivered in shrink-wrap film	•
	Supplied with oil and coolant -30°C	•
	Automatic oil top up with tank	EN 18
cooling	Oil drainage pump	•
	Radiator for wiring T' of 50°C max with mechanical fan(2)	•
	Supplied without coolant	FD 11
	Protective grille for fan and rotating parts	•
exhaust	Radiator wiring harness protective grille	EN 14
	Stainless steel compensators	•
	9dB(A) silencer supplied separately	EN 07
	29dB(A) silencer supplied separately ²	EN 08
starting	40dB(A) silencer supplied separately	EN 09
	24V charge alternator and starter	•
	Batteries with cables and battery mounting	SO 001
diesel	No battery and battery bracket	•
	Battery isolating switch	EN 16
	Generating set without tank	•
	Separate tank on 500 L container	FD 06
	Separate tank on 1000 L container	FD 07
	Retention container alarm	FD 14
	1 m ³ /h pump auto kit 1	FD 08
1 m ³ /h pump auto kit 2	FD 09	
accessories	4 m ³ /h pump auto kit 2	FD 10
	Diesel separator pre-filter	FD 05
	User manual and commissioning guide (paper version) - French, English or Spanish	•
	User manual and commissioning guide (paper version) - French, English or Spanish (3)	AD 21
	User manual and commissioning guide (CD version) - French, English or Spanish ³	AD 22
	Engine parts catalogue (paper version) - English	AD 31
	Engine parts catalogue (CD version) - English	AD 32
	Engine repair and workshop manual (paper version) - English	AD 41
Engine repair and workshop manual (CD version) - English	AD 42	
	GENSERVICE replacement parts	O



¹ EN02
Air filter with interchangeable cartridge



² EN08
29 dB silencer



³ AD21 et AD 22
User manual and commissioning guide

- As standard
 - X Not possible
 - O Several possible options
- EN 21 Option code
FD 01 Free option

- (1) Synchronizing CT coupling not necessary with Mics KERYS
- (2) External ambient temperature, reduce by approximately 7°C
- (3) Additional copy

The CONTENERGY concept

CONTENERGY

50Hz 60Hz

INTRODUCTION

The CONTENERGY concept offers a range of soundproof containers featuring a multitude of options

Thanks to their standard dimensions, CONTENERGY containers are easy to transport and, once on site, very simple to install: we would recommend that you install them outside the building on a concrete plinth with suitable trenches for cables and fuel pipes.

Highly economical thanks to its cooling system, integrated sound traps and silencers, the CONTENERGY concept is completely self-contained, with a fuel capacity which enables it to operate immediately, without connection to an additional tank.

SDMO understands the many factors that have an influence on your equipment's operation. That is why our containers are designed to resist exacting climatic conditions. Whether your equipment needs to operate in extreme cold or tropical environments, let us know your requirements - we are sure to have the solution you're looking for.

Trailers compliant with international standards are also available, allowing you to transform your generating set into a mobile unit (please contact us)



With the CONTENERGY concept, one simple connection is all it takes to get your power plant up and running.

Conternergy

CONTENERGY

INTRODUCTION

CONTENERGY ISO

The dimensions of CONTENERGY ISO containers comply with CSC certification. They have been specially designed to withstand significant loads and pressures during transport without incurring damage, and for ship transportation without any special constraints. They are available in two sizes: 20 and 40 feet "High Cube".

CONTENERGY CIR

CIR type containers are more suited to mobile and rental applications. This highly compact model has a very low sound level and features an optional high volume tank, giving it up to 10 hours of autonomy. This model is available as a 20 feet "High Cube".



For environmental protection purposes our containers may be fitted with an optional retention container to hold all engine fluids.

Our containers comply with all current standards and regulations governing these products, including:

- ISO 668
- NF90-005
- NF ISO 1496-1 (ISO 8323)



ISO20 (Silent)
1275kVA - 1540kVA



ISO40 (Silent)
1700kVA - 2100kVA

CIR20 SSI (Super Silent)
1275kVA - 1540kVA

Generating set type	Engine	SILENT	SUPER SILENT	SILENT	SUPER SILENT
		85-87 dB(A)@1 m	82-84 dB(A)@1 m	79-82 dB(A)@7 m	77-79 dB(A)@7 m
T1400 - T1540	S12R	ISO 20 Si	CIR 20 SSI	X	X
T1200U - T1350U	S12R	X	X	ISO 20 Si	CIR 20 SSI
T1900 - T2100	S16R	ISO 40 Si	X	X	X
T1600U - T1800U	S16R	X	X	ISO 40 Si	X

Standard containers

basic and options

50HZ 60HZ

BASIC AND OPTIONS

EQUIPMENT

	Basic and options	SILENT		SUPER SILENT
		ISO 20 Si	ISO 40 Si	CIR 20 SSI
Basic	Base member	•	•	•
	Starter, 24 V charge alternator	•	•	•
	Batteries filled with electrolyte	SO 001	SO 001	SO 001
	Standard air filter	•	•	•
Container specifications	Oil drainage pump	•	•	•
	Type of soundproofing	Si	Si	SSi
	High performance integrated 30 dB(A) silencer	•	•	•
	Floor	Bulb plate	Bulb plate	Bulb plate
	Number of doors	2	2	3
	Galvanised air outlet rain grille	CT 005	CT 005	•
	Safety lighting and shut-off valve	CT 007	CT 007	CT 007
	Exhaust outlet on bracket	CT 011	CT 011	CT 011
	RAL 9010 white painted finish for container	•	•	•
	Special colour from list	CT 016	CT 016	CT 016
Fuel	Power cable outlet on lower section	CT 015	CT 015	CT 015
	Retention container under container assembly	CT 014	CT 014	CT 014
	500 l chassis tank	•	X	•
	Tank on container (500 l)	X	•	X
	Tank on container (2000 l)	X	X	CT 017
	External terminal block	CT 018	X	CT 018
	1 m³/h pump auto kit 1	CT 008	CT 008	CT 008
	1 m³/h pump auto kit 2	X	CT 009	X
	4 m³/h pump auto kit 2	X	CT 010	X
	CE compliance of the control unit	•	•	•
Control units	MICS Telys control unit	CM 40	CM 40	CM 40
	MICS KERYs control unit	CA 600	CA 600	CA 600
Dimensions	Length (mm)	6058	12192	6058
	Width (mm)	2438	2438	2438
	Height (mm)	2896	2896	2896

• As standard X Not possible EN 01 Option code CT 011 Free option



PRESENTATION

MICS TELYS

The new generation of Telys, SDMO's flagship product, integrates all the features of the previous version, whilst including certain improvements and additions. It is even more straightforward and user-friendly, with the emphasis on communication (USB connections, PC connections, control software and remote operation).

Its new design, inspired by the NEXYS, has reduced the number of buttons to offer you simplicity when operating your generating set. It also offers the following new features:

- Integrated maintenance monitoring programme(a) (on-screen display of future maintenance operations)
- Built-in fault finding tool guiding the user in the event of any alarms or faults
- Ability to send(b) e-mail, SMS or fax in the event of any alarms or faults
- Genset or temporary coupling card as an option (a)
- Optional tropicalisation of the cards to provide protection in extremely humid conditions (b)
- Compliance with various legal requirements or regulations (CE, UL, etc.)
- Screen with contrast adapted to all types of lighting

(a) available from 2007 semester 1
(b) As an option

Emergency stop push button



Display screen made up of 4 zones:

- ZONE 1:** Operation mode (genset running/auto/manual)
- ZONE 2:** Display of functions via pictograms
- ZONE 3:** Display of mechanical and electrical values and the associated measurements
- ZONE 4:** Operating messages and parameter settings menu



The USB ports facilitate daily maintenance or product updates, enabling the configuration parameters to be saved (Telys -> USB key) or, alternately, the software to be updated (USB key -> Telys).



Operation at -20°C to +60°C
Hygrometry: 95% at 45°, 70% at 50°C, 50% at 60°C
5 language options, numerous optional languages
Ability to connect up to 5 additional input/output modules (4 inputs/6 outputs) (b)

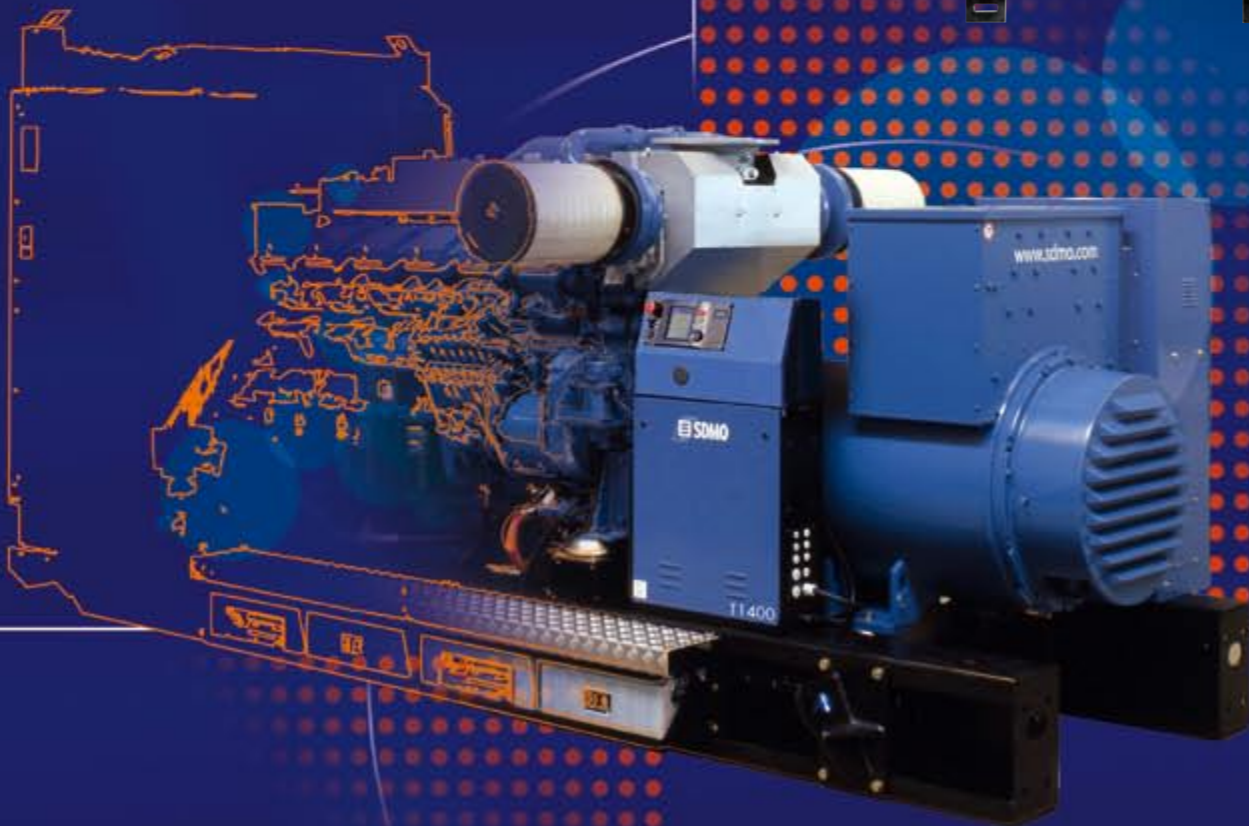
(1) Control and automatic operation present, but require the "Prewiring for auto-startup" option and possibly the configuration of a parameter on the mics TELYS
(2) The choice of alarm or fault is made by programming on the keyboard
(3) Differential protection is ensured by an exterior module
(4) Mics DS detection is provided using the source changeover switch as a base. If the source changeover switch is not chosen, the Mics DS module can be fitted in the control unit
(5) To find out more detailed contents, please consult us
(6) Standard NFE37312

SPECIFICATIONS

Category	Feature	Availability
Measurements	Powers (active, reactive)	● LCD
	Composite voltages	● LCD
	Single voltages	● LCD
	Phase current	● LCD
	Neutral current	● LCD
	Frequency	● LCD
	All states of the generating set, all starting phases	● LCD
	Analog indicator	○
Battery ammeter	○	
Engine parameters	Engine speed indicator	● LCD
	Battery voltage indicator	● LCD
	Working hours counter	● LCD
Controls	Speed/voltage trimming	○
	Power on	●
	Fuel solenoid valve control	●
	Starter control	●
	Preheating plug	○
	Water preheating	○
	Network switch (normal)	○ ⁽¹⁾
Network switch (emergency)	○ ⁽¹⁾	
Indicator lights and/or messages	Oil pressure fault	●
	Coolant temperature fault	●
	Non-starting fault	●
	Overspeed fault	●
	Genset ready to supply	●
	Charging alternator fault	●
	General alarm	●
	General fault	●
	Panel light	●
	STOP, MANU, AUTO, TEST modes	●
	Generating set switch closed (normal)	○ ⁽¹⁾
Network switch closed (emergency)	○ ⁽¹⁾	
All alarm and/or fault messages	● LCD	
Safety	Oil pressure fault	●
	Coolant temperature fault	●
	Emergency stop fault	●
	Short circuit or overload fault or alarm	● ⁽²⁾
	Battery voltage min/max fault or alarm	● ⁽²⁾
	Alternator voltage min/max fault or alarm	● ⁽²⁾
	Alternator frequency min/max fault or alarm	● ⁽²⁾
	Overspeed fault	●
Presence of differential relay fault	○ ⁽³⁾	
Differential relay triggered alarm or fault	○ ⁽²⁻³⁾	
Automatic functions	Automatic standby	●
	Automatic shutdown	●
	4 modes	●
	Engine stop for auto cooling	●
	Speed and voltage stabilisation	●
	Preheating plug	○
	Registering retro-information from the normal/emergency switch	○ ⁽¹⁾
	Switch from emergency to normal	○ ⁽¹⁾
	Switch from normal to emergency	○ ⁽¹⁾
	Manual closure of the generating set switch	○ ⁽¹⁾
	Manual opening of the generating set switch	○ ⁽¹⁾
Starting on clock	○ ⁽¹⁾	
Remote starting order	○ ⁽¹⁾	
Three phase mains detection	○ ⁽¹⁾	
Accessories	Light test	●
	Fault reset	●
	Prewiring for auto-startup	○
	Automatic pack (charger-relay and engine preheater resistor)	○
	GES pack ⁽⁶⁾ fitted on the genset ⁽⁶⁾	○
	NFPA 110 module (60 Hz)	○
	Adjustable differential protection (time and threshold)	○ ⁽²⁾
Sound alarm	○	

○ Option ● Standard ● LCD Standard with LCD message

For more information on the TELYS, please refer the TELYS documentation (TEL/GB-2007) or speak to your SDMO sales representative



electrical control units

Three control units are available in our 650 to 3000 kVA range: the M80, the Mics TELYS (previous pages) and the Mics KERYS.

Your control unit can be chosen according to your equipment type and perfectly adapted to suit your needs with the options available. This modularity is made even easier by the fact that each optional peripheral device (air cooler, daily service tank, oil top-up, etc.) has its own protection.

For power plants, separate control boxes may be used in place of the control units: please do not hesitate to contact us.

INTRODUCTION

M80

The M80 control unit has a dual functionality. It can be used as a basic terminal block for connecting a control box and as an instrument panel with a direct read facility, with displays giving a global view of your generating set's basic parameters.



SPECIFICATIONS

		BASIC TERMINAL BLOCK	M 80
Measurements	Tachometer (54 mm)	X	▪
Engine parameters	Oil pressure gauge	X	▪
	Coolant temperature indicator	X	▪
	Oil temperature indicator	X	○
Controls	Emergency stop	▪	▪
Miscellaneous	CE compliant	▪	▪
	Customer connection terminal block	▪	▪

▪ As standard X Not possible ○ Options

PRESENTATION

MICS KERYS

50Hz 60Hz

The Mics KERYS is a user-friendly, easy to grasp tool, offering a wide range of functions. It is fitted as standard to all generating sets designed for coupling applications, and can be fitted as an option, from 200 kVA, to the rest of our applications. So that all the requirements of high and low voltage power plants can be met, the Mics KERYS can be built into the console, fitted directly onto the generating set or on a separate cabinet. It complies with CE, UL and CSA standards.

Display screen
7.4 inch LCD TFT
Colour graphic display
Touch screen
Dimensions:
154 mm x 86 mm

Parameter setting keypad
For setting parameters,
navigating and directly
accessing the screens



The Mics KERYS is available in two versions. The basic MMI (Man/Machine Interface) includes a monochrome LCD screen with a functions keypad. The top of the range version of the Mics KERYS Tactil has a TFT colour touch screen. Both of these two versions has an ergonomic interface for configuration, operation or fault finding.

ADDITIONAL SPECIFICATIONS

Measurements

Power factor in the different screens
Active and reactive powers
Synchronism (difference in phase, voltage and frequency)
Harmonics in voltage and current

Safety features

Overload, short circuit
Phase current direction
Neutral current
Reverse component
Voltage reserve
Thermal image
Presence and absence of voltage
Maximum active power
Active and reactive power return
Homo-polar current and homo-polar current direction
Restricted earth and homo-polar voltage
Vector jump, min Z and df/dt

Synchronisation

Manual and automatic
Frequency and voltage equalisation

Adjustment

Speed and voltage
Switching frequency and voltage set values
Adjusting frequency and voltage set values
Adjusting active and reactive power set values
Active and reactive power surge keyway
Active and reactive power distribution
Active and reactive power return setting
Manual control of speed and voltage regulations

Communication

In local mode or remote mode
Built-in Web server
Via RS485 connection
Via Ethernet (in local mode) and Internet (in remote mode)

Plus points integrated as standard

Fault finding aid
Assistance and maintenance (history, sending of emails...)
Mechanical and electrical parameter archives and curves
Load impact management
Addition of supplementary software without external tool

Configurations

A612: Genset without grid
A622: Genset with normal/emergency switch and grid without coupling
A633: Production plant without grid
A634: Production plant with grid and normal/emergency switch (no grid coupling)
A641: Genset with permanent coupling to grid without normal/emergency switch - Grid coupling + resale
A642: Genset with permanent coupling to grid without normal/emergency switch - Grid coupling + power level 0 kW on the grid
A651: Genset with temporary coupling to grid and normal/emergency switch
A661: Genset with permanent coupling to grid and normal/emergency switch

REMOTE OPERATION AND CONTROL

Display screen for electrical data



The Mics KERYS and KERYS Tactil are supplied as standard with integrated operational software. The 60 resident screens enable you to have complete control over your installation, regardless of the distance (operation and parameter setting).

SPECIFICATIONS

AIPR

Each generating set may be supplied with a protection unit. This unit is mounted on the chassis with connection cables to the alternator. It is located on the right-hand side of the generating set.

Rating	800A	1250A	1600A	2000A	2500A	3200A	4000A
With manual control on the front							
Fixed 3 pole compact circuit breaker	▪	▪	▪	X	X	X	X
Fixed 3 pole open circuit breaker	X	X	X	▪	▪	▪	▪
Fixed 4 pole compact circuit breaker	○	○	○	X	X	X	X
Fixed 4 pole open circuit breaker	X	X	X	○	○	○	○
Motorised control option ⁽¹⁾							
With 3 or 4 pole open circuit breaker only	○	○	○	○	○	○	○
208-440 V	▪	▪	▪	▪	▪	▪	▪
Auxiliary unit option ⁽²⁾	○	○	○	○	○	○	○
Power connection bus bars	▪	▪	▪	▪	▪	▪	▪
Remote control terminal block	▪	▪	▪	▪	▪	▪	▪
Protection index	IP 207	IP 207	IP 207	IP 207	IP 207	IP 207	IP 207
DIMENSIONS (without air cooler unit)	height (mm)	1260	1260	1260	1260	1260	1260
	width (mm)	683	683	683	683	683	683
	depth (mm)	365	365	365	365	365	365
1 DIMENSIONS (with air cooler unit)	height (mm)	1664	1664	1664	1664	1664	1664
	width (mm)	683	683	683	683	683	683
	depth (mm)	365	365	365	365	365	365
2 DIMENSIONS (with connection unit on upper section)	height (mm)	1883	1883	1883	1883	1883	1883
	width (mm)	683	683	683	683	683	683
	depth (mm)	365	365	365	365	365	365

(1) The motorised control includes a closure solenoid valve, a shunt trip coil and an AC motor.
 (2) The auxiliary unit option is mounted above the main unit. It is used for the power connections of generating set auxiliaries, eg.:
 - air cooler output
 - fuel pump unit output

▪ Standard
 ○ Option
 X Not possible



1 unit with standard connection

2 unit with connection from above (with integrated air cooler unit on the lower section if necessary)

PRESENTATION

AUTOMATIC TRANSFER SWITCH

SDMO provides a complete range of separate Automatic Transfer Switch. There are a large number of benefits to our technology, both in terms of cost and of ease of installation. The design of the control units and boxes enables even cables with large cross sections to be easily connected. The front panel of the unit no longer opens on just one side, like a conventional control unit, but on three sides, allowing total access to all the connections for the power equipment and terminal blocks. All our control units are either three-pole or four-pole. The TSI module (Transfer Switch Intelligence) is fitted as standard to our entire range of normal/emergency switches, whatever the rating of their switching component (from 25A to 3200A).

		25A	32A	45A	63A	110A	140A	200A	250A	400A	630A	800A	1000A	1600A	2000A ⁽¹⁾	2500A ⁽¹⁾	3150A ⁽¹⁾
Voltage	208-440V	▪	▪	▪	▪	▪	▪	▪	▪	▪	▪	▪	▪	▪	▪	▪	▪
	By switches	▪	▪	▪	▪	▪	▪	▪	X	X	X	X	X	X	X	X	X
Changeover	By changeover contactors	X	X	X	X	X	X	X	▪	▪	▪	▪	▪	▪	▪	▪	▪
	Heights (mm)	500	500	500	500	500	500	600	800	800	800	1000	1000	1000	1800 ⁽²⁾	1800 ⁽²⁾	1800 ⁽²⁾
Dimensions	Width (mm)	430	430	430	430	430	430	600	600	600	600	800	800	800	1000	1000	1000
	Depth (mm)	200	200	200	200	200	200	250	400	400	400	500	500	500	800	800	800

(1) Integrated into a floor-mounted control box

(2) On a base plate h=200 mm, i.e. control box of height 1600 + 200

PRESENTATION

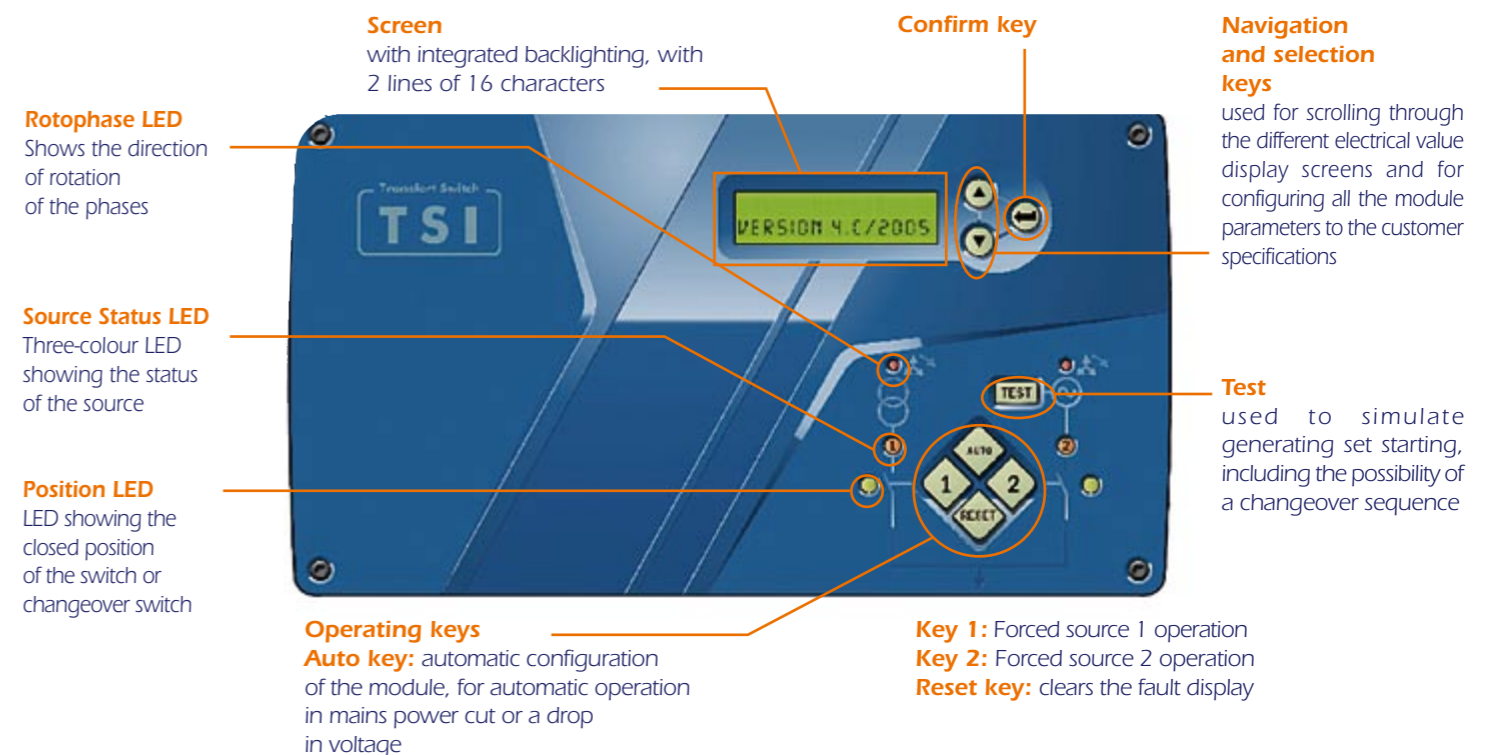
TSI

Both innovative and original in design, the TSI is perfectly suited to applications where the transfer of a main source to a replacement source is crucial for the running of your installations.

Straightforward and easy to use, the special feature of this module is that it is automatically configured when voltage is provided from the grid side.

By simply pressing the AUTO key, the following parameters are configured: grid voltage, voltage min/max thresholds, type of use, frequency min/max thresholds.

Electronic switching of the power source means that the unit can be continuously self-supplied.



SPECIFICATIONS

TSI MODULE

2 lines on the screen, enabling simultaneous display of the voltage on the grid side and the generating set side. The same applies to the frequency. 6 LEDs provide instantaneous information on the position status of both of the two 2 sources, along with any alarms and faults which arise. The TSI also offers 3 configurable inputs and 2 outputs, as an option.

ADDITIONAL SPECIFICATIONS

Communication

In addition to a wired connection which enables remote starting via dry contact with all the SDMO control/command modules (Nexys, Telys, Kerys), the TSI module also has a CAN Bus (as an option from 25A to 200A), allowing it to communicate with the MICS Kerys.

This connection allows all information relating to the grid and the starting order following a variation in voltage to be sent to the Kerys.