



# Wilcom DecoStudio e3.0Q R2 Update 3 Release Notes

11 April 2014

This file contains notes on the Wilcom DecoStudio e3.0Q software update. This update is intended for installation with any released version (already installed) of Wilcom DecoStudio e3.0. It contains all improvements and fixes contained in other interim updates, including e3.0H and e3.0K.

**Note:** Administrative privileges are required to install the software update. If you are installing to a corporate network, an administrator password may be required during update installation.

## Contents

New & improved features in DS e3.0Q R2 .....	2
New & improved features in DS e3.0Q.....	3
System improvements .....	3
Lettering improvements .....	4
Digitizing improvements .....	5
Output improvements.....	6
Object properties.....	8
Korean language support.....	9
New & improved features in DS e3.0K .....	11
Interface & usability improvements .....	11
Thread & fabric improvements.....	11
Lettering improvements .....	12
Stitching & color improvements .....	13
File handling improvements .....	13
New & improved features in DS e3.0H .....	15
Updated Connection Manager .....	15
Other improvements .....	18
Solving problems .....	20
Copyright .....	20
Contact .....	20

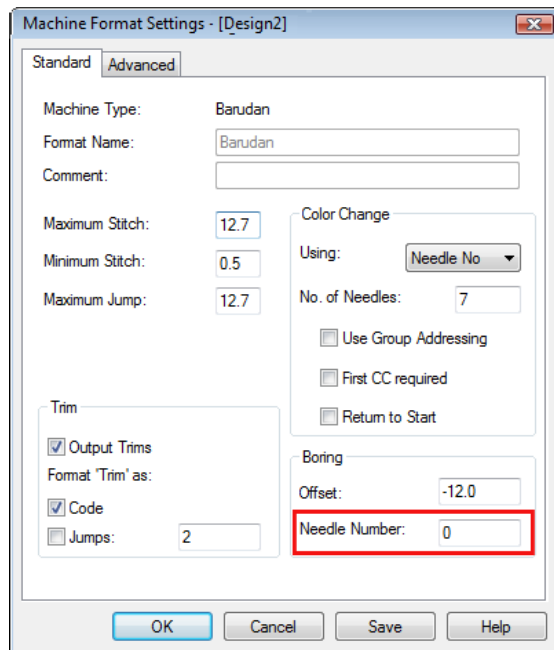
## New & improved features in DS e3.0Q R2

The main purpose of the DS e3.0Q R2 software update is to address a specific issue concerning needle assignments in Barudan U?? files.

### Needle assignment in Barudan U?? files

The DS e3.0Q update inadvertently introduced a problem with needle assignments in Barudan U?? files, as well as other Barudan formats such as DSB, T01. Needle bar addressing is offset unexpectedly. With the e3.0Q R2 update, this problem has been resolved.

However, for e3.0Q designs that already experience this issue, customers need to use the following work-around. In order to stop the shifting, you must set the boring **Needle Number** in the **Machine Format Settings** dialog from 1 to 0 in already-affected design files.



**Note:** If Barudan machine format settings have been saved as a default in DS e3.0Q, the **Boring Needle** number should be set to '0' and updated after installing DS e3.0 R2. If the default boring needle number for a particular Barudan machine format is not 0, it will continue to cause problems.

### To update the default boring needle number

1. Start DS e3.0Q R2.
2. Select **File > New** to open a blank design.
3. Select **Design > Select Machine Format**.
4. Select the affected Barudan machine format – e.g. 'Barudan Z Series'
5. Click **Settings**.
6. Set the **Boring Needle** number to '0' and click **Save**.
7. Click **Close**.
8. Repeat for any other affected machine formats.

## New & improved features in DS e3.0Q

The main purpose of the e3.0Q software update was to repair a number of system issues. This update also provides better Korean language support as well as improved DecoStudio e3 Lettering & Editing functionality. A number of other issues have been resolved for file output and object property handling.

**Note:** Some listed improvements may not be relevant to DecoStudio Lite users. Please contact your local Wilcom dealer or distributor should you wish to upgrade.

### System improvements

DS e3.0Q includes the following improvements to system performance.

#### Writing Defaults file

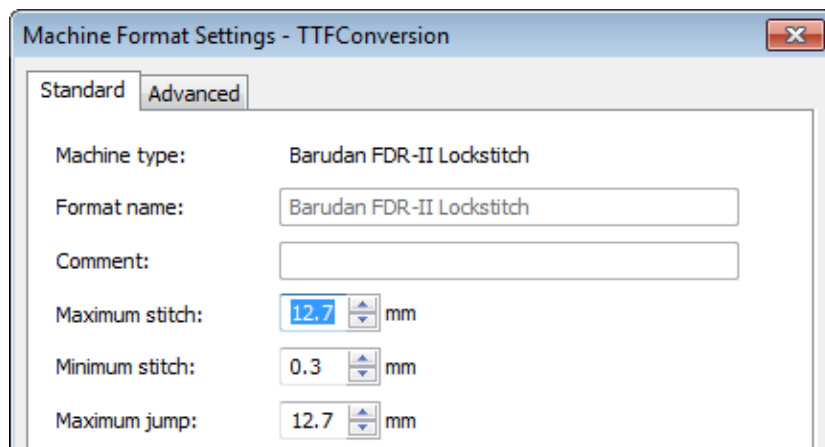
A number of cases have been reported where DecoStudio has encountered problems writing the defaults file. A 'Can't write the Defaults file' warning message appears and ES becomes disabled. This issue has been resolved.

#### Extended use

Problems have been reported when leaving DecoStudio running overnight. Upon trying to open a design the next day, the application becomes disabled. This issue has been resolved.

#### Machine Format Settings missing units

Some units of measurement are missing in the **Machine Format Settings** dialog. This issue has been resolved.



#### Needle assignment in Barudan U?? files

The DS e3.0Q update inadvertently introduced a problem with needle assignments in Barudan U?? files. Needle bar addressing is offset unexpectedly. With the e3.0Q R2 update, this problem has been resolved.

However, for e3.0Q designs that already experience this issue, customers need to use the following work-around. In order to stop the shifting, you must set the boring **Needle Number** in the **Machine Format Settings** dialog from 1 to 0 in already-affected design files.

Machine Format Settings - [Design2]

Standard **Advanced**

Machine Type: Barudan

Format Name: Barudan

Comment:

Maximum Stitch: 12.7

Minimum Stitch: 0.5

Maximum Jump: 12.7

Color Change

Using: Needle No

No. of Needles: 7

☐ Use Group Addressing

☐ First CC required

☐ Return to Start

Trim

☒ Output Trims

Format 'Trim' as:

☒ Code

☐ Jumps: 2

Boring

Offset: -12.0

**Needle Number: 0**

OK Cancel Save Help

## Lettering improvements

DS e3.0Q includes the following improvements to embroidery lettering functionality.

### TrueType Font conversion

TrueType Font conversion has undergone a general improvement in the way fonts are converted to embroidery patches (decomposition). This applies to all character sets.

TrueType Font Conversion

## Conversion of multi-line paragraph text

Several problems have been reported with the conversion of TTF text. CorelDRAW multi-line paragraph text is not converting properly to embroidery. Also, problems have been reported when converting paragraph text with center or right justification. These conversion issues have been resolved.

# Conversion of multi-line paragraph text

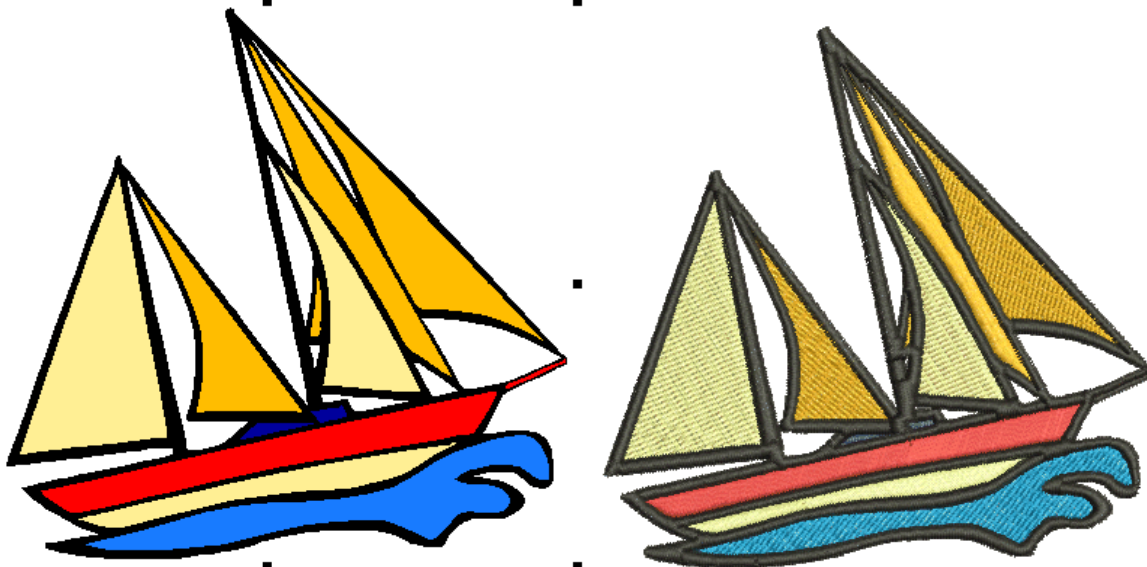
**Note:** Small Paragraph & Artistic Text – in particular, narrow fonts such as script fonts – may not convert to embroidery. Try increasing font size or try converting directly from the DecoStudio **Object Properties > Lettering** tab.

## Digitizing improvements

DS e3.0Q includes the following improvements to embroidery digitizing functionality.

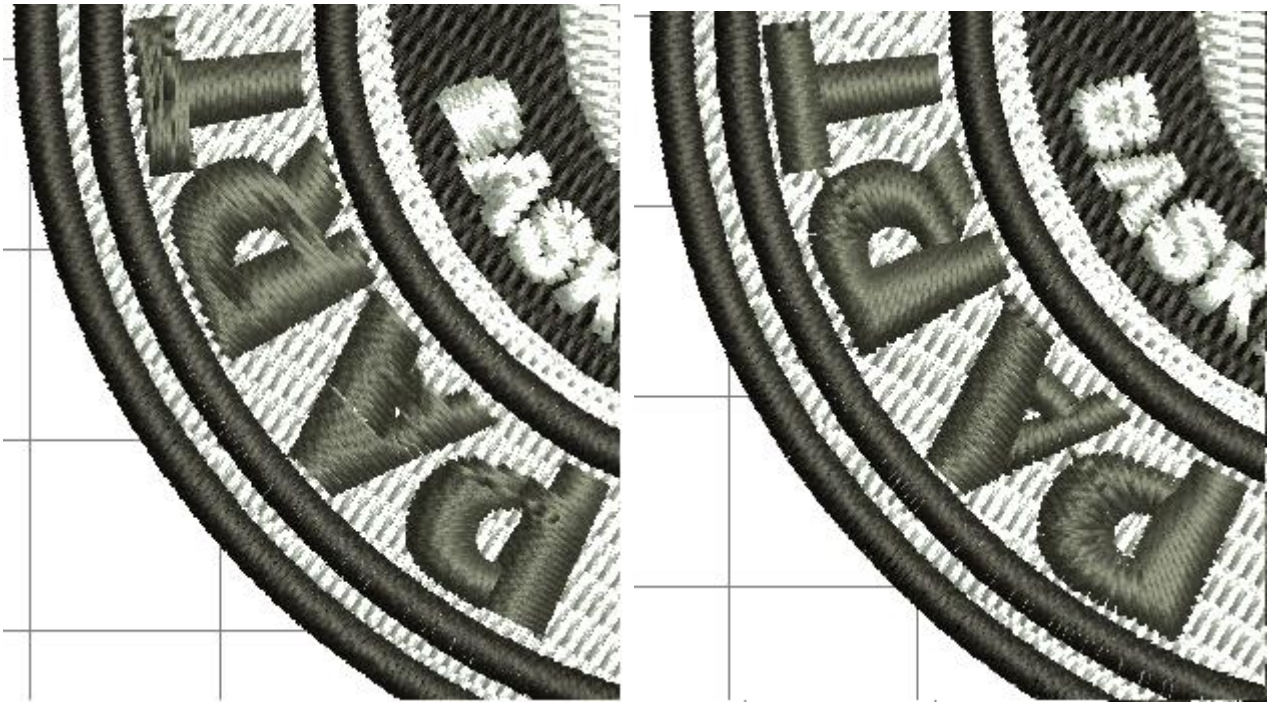
## Conversion of vectors to embroidery

There have been reports of software crashes occurring when converting certain vector designs. This issue has been resolved.



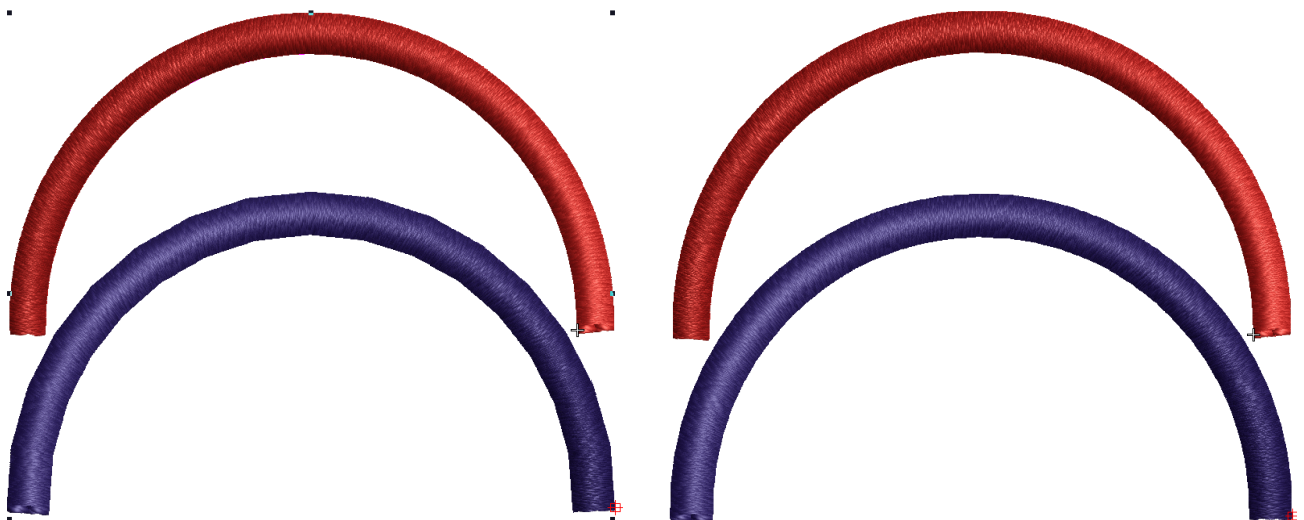
### Vector conversion for letter-like objects

Vector conversion for letter-like objects has been improved with the use of Turning Satin. This works better for narrow turning shapes like letters. Standard conversion still applies to general shapes.



### Curve edge smoothness

Problems have been reported with the relative smoothness of curved edges. The sample shows Input C and Input A with very high stitch density so the edge line can be clearly seen. This issue has been resolved.



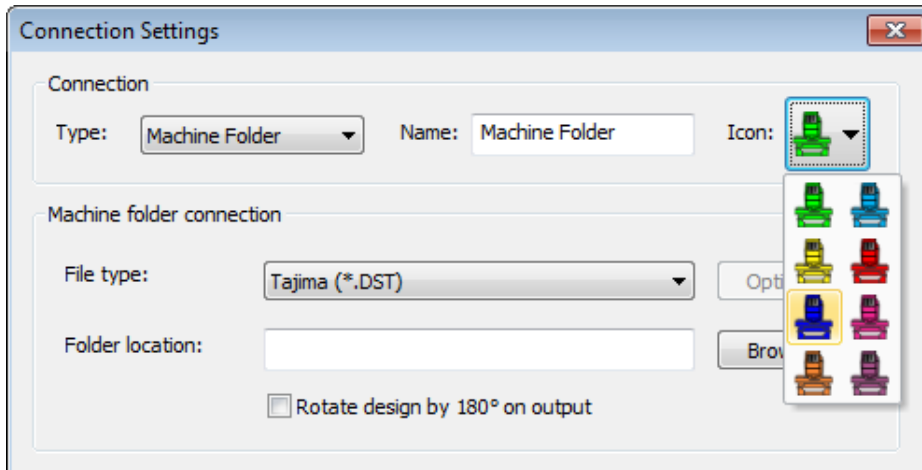
### Output improvements

DS e3.0Q includes the following output improvements.



## Rotate design 180° on output for cap applications

Connection Manager now provides the ability to optionally rotate design 180° on output for cap applications.



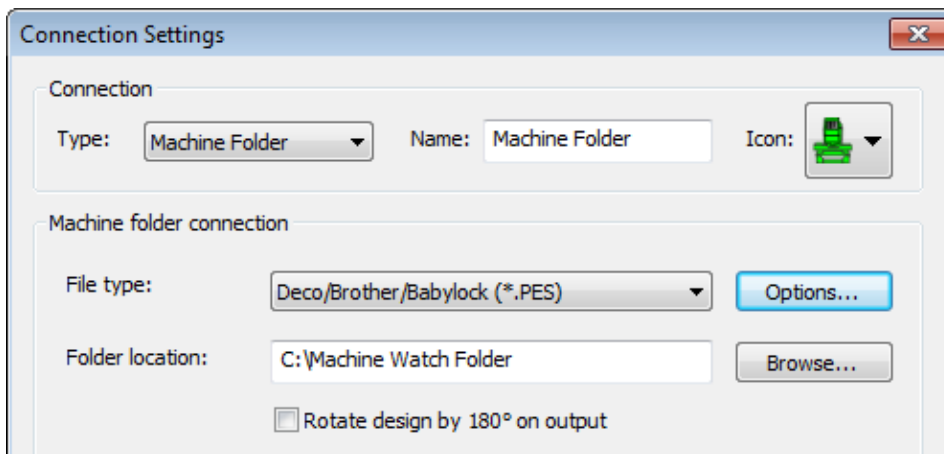
A **Rotate design by 180° on output** checkbox has been added to the **Connection Settings** dialog. If ticked, all designs sent to that connection will be automatically rotated.

## Color selection for machine icons

Connection Manager also now provides the option to select a color for machine icons. There are 8 colors to choose from. By default, the 'next available' color is pre-allocated as is currently done with the toolbar icon.

## Save options added to Connection Manager

An **Options** button has been added in **Connection Manager**. This allows users to set up specific file format options directly from within Connection Manager without having to go to the **Save As** dialog.

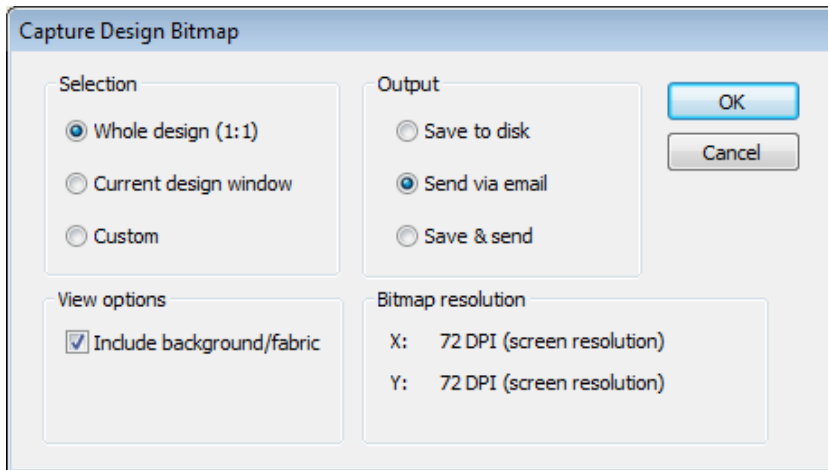


## First needle number written to Barudan format

Previously, the first needle number was not written to Barudan file format. For a single color design, this meant the machine always defaulted to the first needle rather than selected needle. With this release, all Barudan machine formats have 'First CC required' enabled by default.

## Capture Design Bitmap via Email

Problems have been reported when using the **Capture Design Bitmap** function for sending via email. It fails to work as expected with Windows Outlook 2010 or Outlook 2007 on Vista. Nor does it work properly with Windows Live Mail under Windows 7. This issue has been resolved.



## Removal of PES Hoop type dialog when saving as PES format

Previously, when saving a design in PES format, the PES Hoop type dialog appeared requiring the user to choose a size. The dialog has been removed when outputting a PES design via **Save**, **Save As**, or **Connection Manager** functions. Instead, the PES file format **Options** button is enabled in the relevant dialog.

## Stop function codes with U?? files

Problems have occurred with the placement of Stop function codes in U?? files. Trim and Stop codes are placed in the wrong sequence, Stops being placed before Trims. This issue has been resolved.

## Object properties

DS e3.0Q includes the following improvements in the handling of object properties.

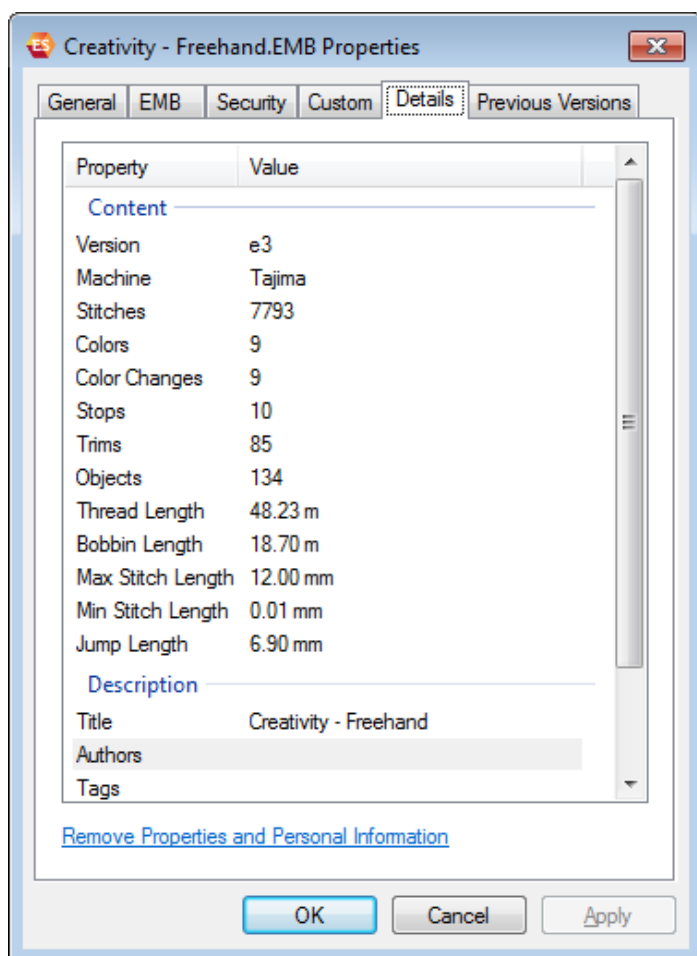
### Use of Object Properties with dual monitors

In a situation of dual monitors with the **Object Properties** dialog in the second screen, the slider bar remains outside the dialog to the edge of the first monitor. In short, sliders are not always visible, being hidden off the edge of the screen. This issue has been resolved.

### Thread and bobbin lengths displayed in EMB file properties

Incorrect thread and bobbin length values have been reported in the EMB file properties display in **Design Explorer**. This issue has been resolved.





### Design preview in Windows Explorer

When a design is saved in EMB e2 (or earlier version) in ESe3, the version number is displayed in Windows Explorer as 3.0. This issue has been resolved.

### Thread length values in EMB file in DW/DE

There have also been reports of thread length values in EMB file changing to either 0 or negative values in Design Workflow and Design Explorer. This issue has been resolved.

### Korean language support

DS e3.0Q includes the following improvements in support of Korean language.

#### Korean language resources added to software

Korean language resources have been added to the latest software installation.

#### Quality of Korean TTF conversion to embroidery

The quality of conversion of Korean TrueType Fonts to embroidery has been improved, with better detection of shape cuts and embroidery patches that support Korean unicode characters. Conversion now better follows Korean stroke rules. Also:

- All characters are satin stitch.

- Embroidery stitch direction is the reverse of character process direction.

These issues have been addressed with the current release.

### **Stitching Korean letters with turning fill style**

Korean TTF conversion fails to stitch some letters with a turning fill style – i.e. conversion produces Tatami Complex Fill objects. This issue has been resolved.

## New & improved features in DS e3.0K

The release of the DS e3.0K software incorporates the following new and improved features.

### Interface & usability improvements

DS e3.0K includes the following interface & usability improvements.

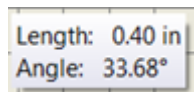
#### Ruler display

Inch rulers are now displayed in 1/16, 1/8, 1/4, 1/2, and 1" divisions not 1/10s. The grid size can be set in decimal inches now. This is usable as is.



#### Transformation & measure tooltips

Unit of measure displayed in the Resize tooltip can now be chosen by the user. Similarly distance moved – e.g. moving letters – is now displayed in appropriate units. Similarly, 'Length' and 'Angle' labels have been added to the Measure tooltip, together with the appropriate length unit.



#### Travel tool keyboard shortcuts



All **Travel** tools now have keyboard shortcuts. New shortcuts include:

- Travel by 1000 stitches: Shift + Num- / Shift + Num+
- Travel by Function: Ctrl + Page Up / Ctrl + Page Down
- Travel by Trim: Ctrl + Left Arrow / Ctrl + Right Arrow

#### Garbage characters in Japanese menus

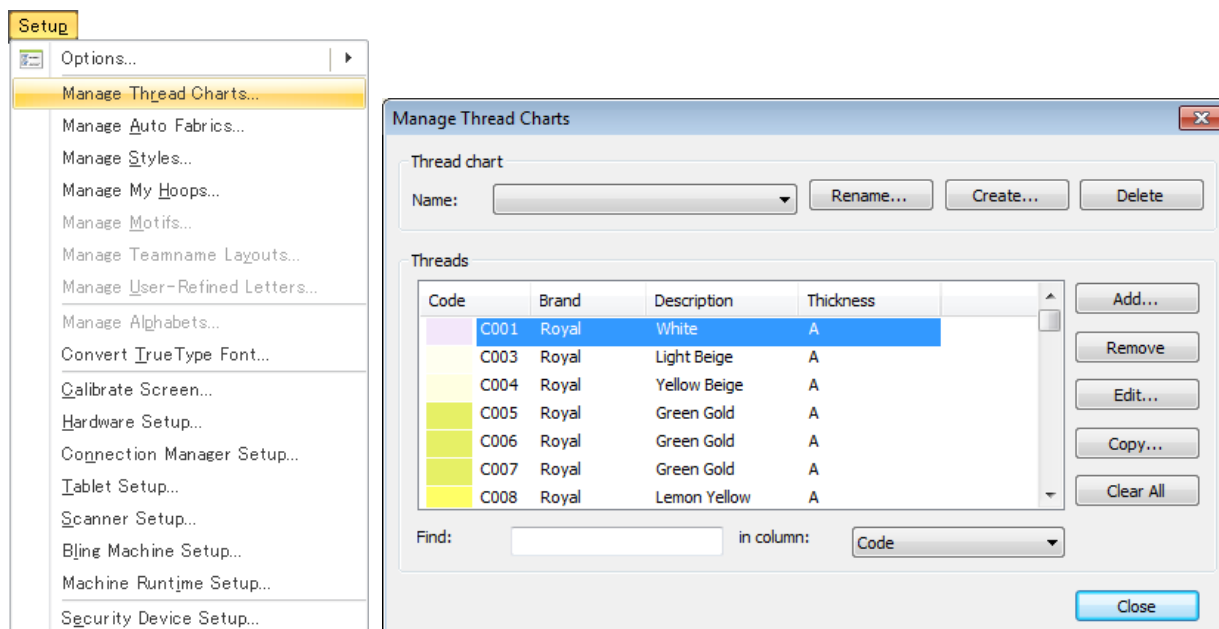
Garbage characters are appearing in menus in e3 Japanese when using WinXP. This issue has been resolved.

### Thread & fabric improvements

DS e3.0K includes the following thread and fabric improvements.

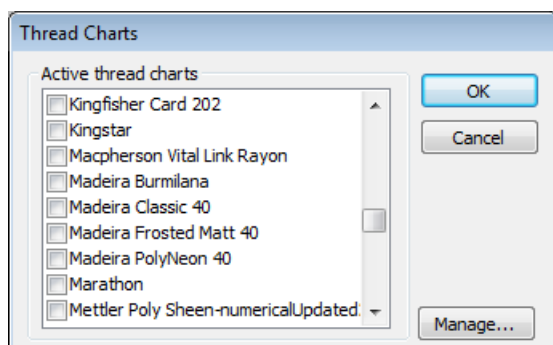
#### Access to Manage Thread Charts dialog

The **Manage Thread Charts** dialog is now directly accessed via the **Setup** menu along with other asset management functions. Previously it could only be accessed indirectly via the **Thread Charts** dialog.



## Madeira color palettes

Madeira color palettes have been updated and now include all the latest threads. The new **PolyNeon** palette is also included.

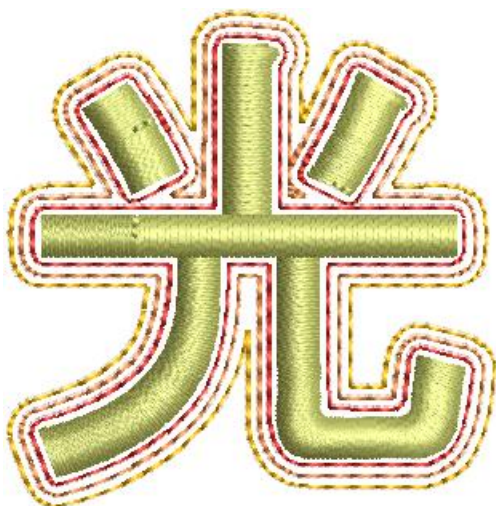


## Lettering improvements

DS e3.0K includes the following lettering improvements.

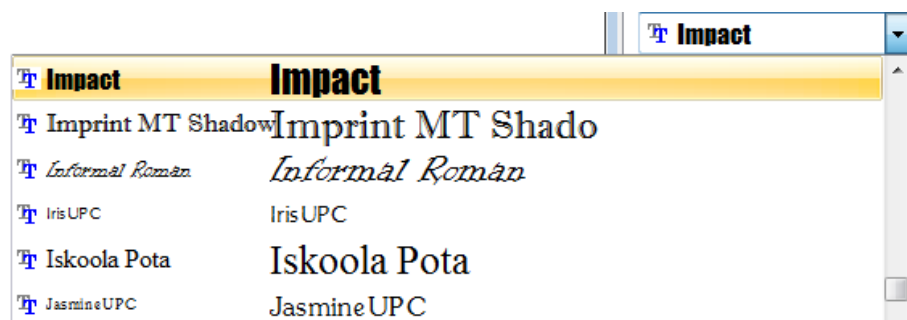
### Offset outlines with Kanji lettering

DS now provides the ability to apply offset outlines to Kanji characters as part of a lettering object.



### Preview of fonts in lettering properties

Previewing fonts in lettering properties can cause ES to unexpectedly shut down. This generally happens if there are a very large number of TrueType fonts installed in Windows. This issue has been resolved.



### Stitching & color improvements

DS e3.0K includes the following stitching and color improvements.

#### Slant angle of zigzag underlay

The slant angle of zigzag underlay defaults to 30° when opening an V2006 or earlier EMB files in e3. This can cause the underlay to extend outside the boundary. With e1.5 and e2.0, the slant angle correctly defaults to 90°. This issue has now been resolved for V2006 and earlier.

### File handling improvements

DS e3.0K includes the following file handling improvements.

#### Design Explorer and DesignWorkflow file display

Currently, DE and DW do not display Barudan U?? files at all. This issue has been resolved.

#### Missing formats in ES

TrueSizer can open and save some formats that are not available in ES. This has now been corrected so that all products open and save the same formats. Also, three additional formats have been added to both TrueSizer and ES:

- Elna (\*.EMD)
- Janome/Elna/Kenmore (\*.JEF+)
- Pfaff (\*.PCM)



## New & improved features in DS e3.0H

The main theme of the e3.0H software update was to enhance support for third-party machine connection. Specifically, Happy, ZSK and Brother machines. Other aims of this release include:

- Resolve issues associated with multi-language release.
- Improve machine connectivity by providing the ability to add named machines and define a network location for design retrieval.
- Fix other outstanding software issues unresolved at the time of last release.

### Updated Connection Manager

DecoStudio Connection Manager has been updated to provide a more flexible method of connection to different machines that appear as removable media or use a third-party application to connect to the machine and require files to be placed in a specific network location. Each machine, once set up, will only require a single click in order to send a design to the predefined folder on a network or PC.

#### Basic workflow

The basic workflow is as follows:

1. Set up a machine connection.
  - Each machine has a unique name and 'Quick Access' button.
  - Each machine can have a unique folder to which designs can be sent so they can be accessed from the machine control panel or third-party machine connection software.
2. Create a design.
3. Click the Quick Access button for the specific machine.
4. The design is sent to the specified folder.
5. Using the machine controller or third-party connection software, access the design from the network or PC folder.
6. Load or send the design.
7. Stitch the design on the machine.

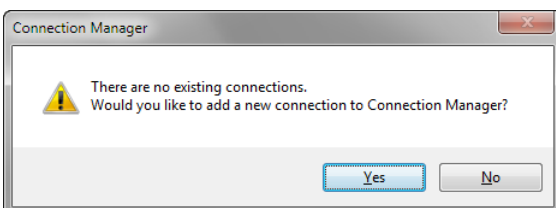
#### Sending a design for the first time

1. Click the **Connection Manager** icon on the **Standard** toolbar.



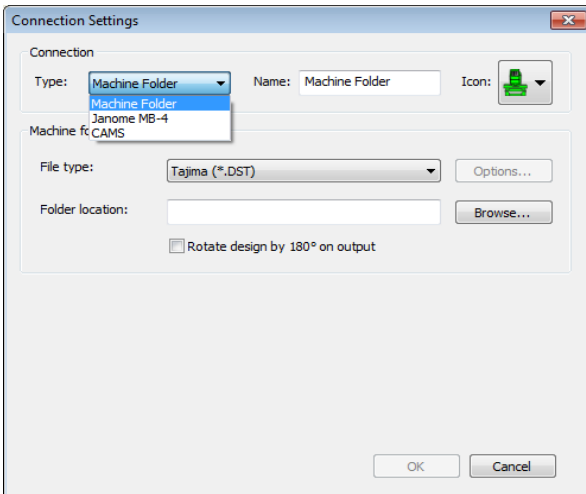
Alternatively, select **Setup > Connection Manager Setup**.

If no connections currently exist, the message appears:

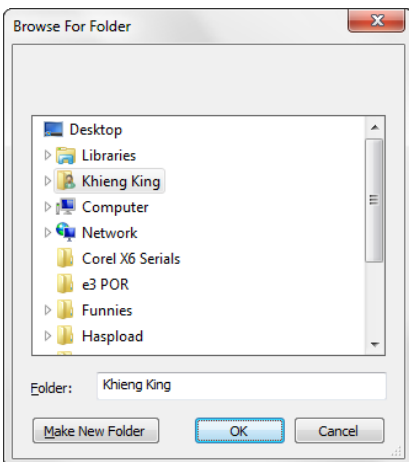


2. Click **Yes** to start setting up your connections.

The **Connection Settings** dialog opens.

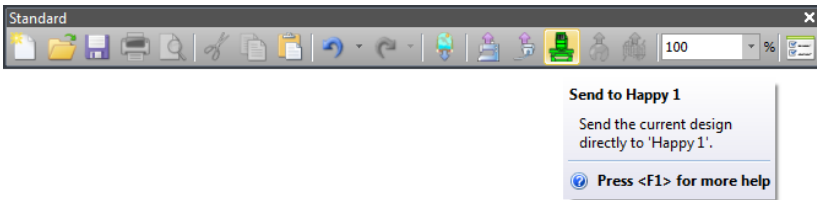


3. Select the connection type. Choose from:
  - Machine folder – e.g. Barudan DFS, HappyLink/LAN, Brother PR series and so on
  - Janome MB-4
  - CAMS (rhinestone placement machine)
4. Enter a unique machine name. This name identifies the Quick Access button.
5. Select the file type required by the machine.
6. Enter or browse to a file location on the network or the PC

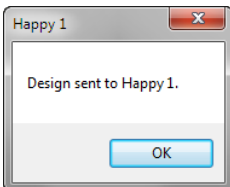


7. Click **OK** when complete.

The new machine will appear as a Quick Access button on the **Standard** toolbar



8. Click **Send** to send the currently open design to the specified machine folder.  
A confirmation message is displayed.



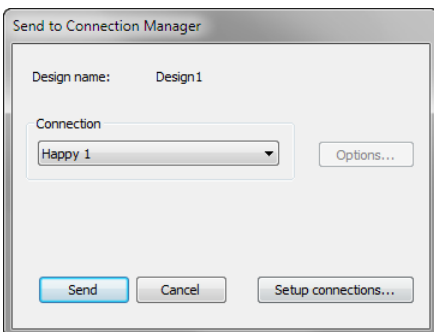
## Setting up additional connections

1. Click the **Connection Manager** icon on the **Standard** toolbar.

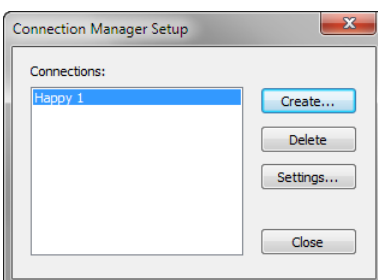


Alternatively, select **Setup > Connection Manager Setup**.

If a connection already exists, the **Send to Connection Manager** dialog opens.

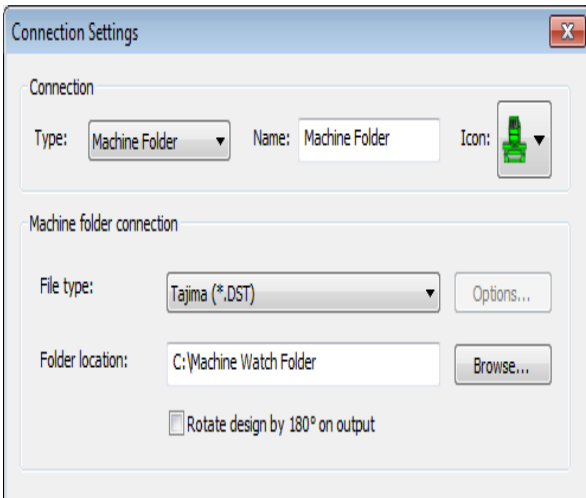


2. Select **Setup Connections**.  
The **Connection Manager Setup** dialog opens.



3. Click **Create**.

The **Connection Settings** dialog opens.



- Repeat steps outlined above to set up another machine connection.

As more machines are created, more quick access buttons are added with unique colors for each.



A single click on a machine quick access button will send the current design to the predefined location for the selected machine.

## Other improvements

The e3.0H also includes the following fixes and improvements.

### Multi-language issues

Problem	Resolution
Multi-language GUI problems	A number of problems were reported with regards to truncations and faulty message strings in languages other than English. These have been resolved.
'My Product' for multi-languages	Previously, clicking an element on left hand pane of the 'My Product' dialog, when switched to languages other than English, did not load the corresponding page. This issue has been resolved.
'Capture Design Bitmap' in French	If running ES in French language, the 'Capture Design Bitmap' dialog crashed the system. This issue has been resolved.
German translation of Application Fabric dialog	The Application Fabric dialog title has now been correctly translated as 'Applikations-Stoff'.
Fabric selection in non-English languages	Fabrics displayed to the user in non-English language did not match the translated fabric selected. This issue has been resolved.

## Lettering issues

Problem	Resolution
Complex Fill TTF conversions	When converting letters with holes, such as the registered trademark character ®, strokes inside the outer ring were not always properly generated. This issue has been resolved.
Unwanted Wingdings in text field	Characters entered into the text field sometimes appeared as Wingding symbols, even when a Wilcom alphabet was selected. This happened after digitizing lettering with Webding and Wingding alphabets. This issue has been resolved.
Team Names options when sending via Connection Manager	Problems were reported when selecting Team Names options when sending designs via Connection Manager. This issue has been resolved.

## Auto-digitizing issues

Problem	Resolution
Converting embroidery to graphics	Previously, 'Convert Embroidery to Graphics' did not always convert selected embroidery to vectors. When it did convert, a 'ghost image' of the embroidery could still be seen after conversion to graphics. These issues have been resolved.
Appliqué covering stitches when converting vectors	When creating an appliqué object from a combined vector object, covering stitches for the hole were positioned on the wrong side for appliqué and had to be manually fixed by swapping 'Inside' and 'Outside' values. This issue has been resolved.

## Thread-related issues

Problem	Resolution
Assigning threads to colorways	The Color Palette Editor dialog was slow to respond during thread assignments involving a large number of colorways – e.g. > 50. This issue has been resolved.
Only used colors displayed in colorways	Colorways available from the Color Palette popup menu showed all colors in the palette, whether used or not. Now only colors used in the design (underlined in blue) are displayed. If no color is currently being used, no colors appear in the combo – only the name and background.
Improved colorway popup display	The number of colors visible in the colorways popup menu has been increased as follows: <ul style="list-style-type: none"><li>• Maximum number of (used) colors shown has been increased from 8 to 16.</li><li>• The number of colorways shown at any one time has increased from 4 to 6. The list can be scrolled to reveal more colorways if available.</li></ul>

## Miscellaneous

Problem	Resolution
Object scaling width and height values	When resizing an object via selection handles, the <b>Width</b> and <b>Height</b> values appearing in the resize tooltip were out of sync with those of the <b>Property Bar</b> . This issue has been resolved.
Happy machine hoop display	Happy machine hoops appear in the software to be smaller than actual size. This issue has been resolved.

## Solving problems

If you encounter a problem with the DecoStudio e3.0K software update, refer to the following sources for help:

- Wilcom DecoStudio e3.0 User Manual – select **Help > User Manual**.
- Wilcom DecoStudio e3.0 Onscreen Help – select **Help > Onscreen Help**
- Windows help – select **Start > Help and Support**
- Windows manual – documentation supplied with your hardware.

If you are unable to solve a problem, you should contact your Wilcom dealer. Before seeking help, check that your PC meets the system requirements, and check the Troubleshooting chapter of the Onscreen Manual.

## Copyright

Copyright © 1990-2014 Wilcom Pty Ltd. All rights reserved.

No parts of this publication or the accompanying software may be copied or distributed, transmitted, transcribed, stored in a retrieval system or translated into any human or computer language, in any form or by any means, electronic, mechanical, magnetic, manual, or otherwise, or disclosed to any third party without the express written permission of:

Wilcom Pty Ltd. (A.B.N. 62 062 621 943)  
Level 3, 1-9 Glebe Point Rd, Glebe  
Sydney, New South Wales, 2037, Australia  
PO Box 1094 Broadway NSW 2007  
Phone: +61 2 9578 5100  
Fax: +61 2 9578 5108  
Email: [wilcom@wilcom.com](mailto:wilcom@wilcom.com)  
Web: <http://www.wilcom.com>

TrueView™ and Point & Stitch™ are trademarks of Wilcom Pty Ltd. Portions of the imaging technology of this Product are copyrighted by AccuSoft Corporation. The EPS File Import/Export Converter used in this Product is copyrighted by Access Softek, Inc. All rights reserved.

## Contact

If you have any questions, please contact your local Wilcom dealer or distributor in your country.