

Missing 1.1

Short User Manual

Riccardo Gusmeroli and Claudia Dallera

Contents

1	Introduction	1
2	Installation procedure	1
3	Initial settings	1
4	Structure of Missing	1
5	How to perform an X-ray absorption calculation	3
5.1	RCN program	3
5.2	RCN2 program	6
5.3	RCG program	6
5.4	Racer program	8
6	How to perform a resonant X-ray emission calculation	13
6.1	RCN program for RXES	14
6.2	RCN2 program for RXES	14
6.3	RCG program for RXES	14
7	Data postprocessing	15
8	Software generalities	17
9	Contact informations	18
	Bibliography	18

This document is an introductory guide to the use of the Personal Computer interface to the atomic multiplet code based on Cowan's programs. The name of the interface program is *Missing*: Multiplet Inner-Shell Spectroscopy INterface GUI (please note that the code was formerly named RGAss and that the screenshots contained in this manual were taken before the official name was given). The programs that are accessed through the interface are listed here below, together with the name of the people who developed the codes.

All programs listed above can be downloaded from the website

<http://www.esrf.fr/UsersAndScience/Experiments/TBS/SciSoft/>

where the present manual can also be found.

1 Introduction

In order to perform an Atomic Multiplet calculation several programs must be called subsequently. For each of them we provide the printout of the screen with the explanation of the parameters that must be defined by the user. Many parameters do not need to be adjusted unless in very special cases. For these parameters (that are not detailed in the present manual) we refer the reader to the original manual by Robert Cowan, that can be downloaded from the site. Before starting with the use of the programs some options can be defined through the menus. This is detailed in section 1. When the calculation is finished the results can be exported to be viewed, as detailed in section "How to look at results".

2 Installation procedure

1. Obtain the package *rgass.zip* from the Web site <http://www.esrf.fr/UsersAndScience/Experiments/TBS/SciSoft/>
2. Unzip the package with your favourite unzip software to a folder called *rgass* (or any other name).
3. Go to folder *rgass*.
4. Double-click on *Missing.exe*
5. In *Tools* menu item click on the *Install shell extensions* command so that the *Missing* program is automatically loaded when double-clicking on a *.rgs* file.
6. Again in *Tools* menu item click on the *Re-install RCG* command.

3 Initial settings

The files created through *Missing* are called *Workspaces* and have the extension *.rgs*. The initial page of the program (Fig. 1) allows to create a new *Workspace*, to open an existing one, and to save the active *Workspace*. Duplicating an existing *workspace* must be made from outside the program, infact the *Save as* command is not active. The calls to the programs and their activation can be made from the *Application* menu item as well as from the buttons located below. The *Settings* menu item gives access to settings that affect the calculation and the export of the results, that can also be accessed from within the call to each separate program. They will therefore be detailed in the section dedicated to the specific program. **General note:** *Missing* allows to input the parameters through a user-friendly interface. However it also allows to edit the input file, as in the original version. To do this check the *Custom* checkbox in the upper left part of the screen that appears for each program call.

4 Structure of Missing

Missing is organized as a collection of chained calls to external scientific packages. In particular it is able to manage the following applications:

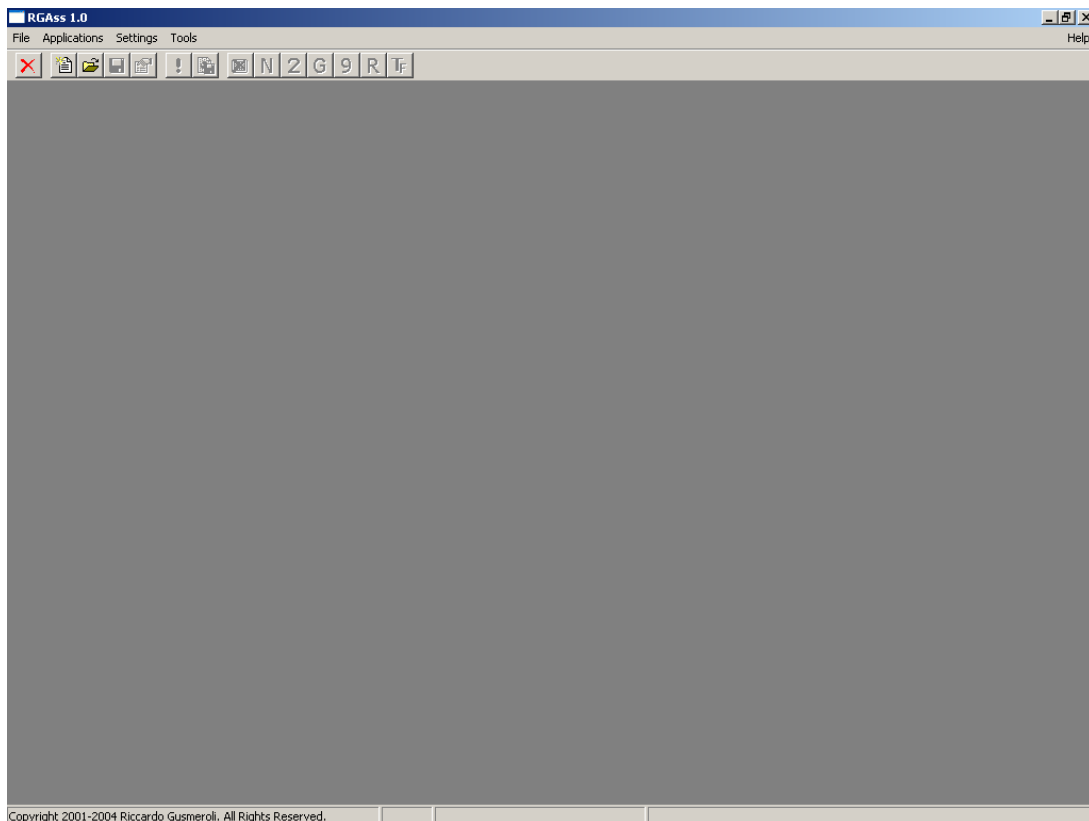


Figure 1: Empty workspace.

- **RCN [1]** (by R. D. Cowan) calculates single-configuration radial wavefunctions $P_{nl}(r)$ for a spherically symmetrized atom via homogeneous-differential-equation approximations to the Hartree-Fock method.
- **RCN2 [1]** (by R. D. Cowan) accepts radial wavefunctions (for one or more different configurations of one or more atoms or ions) from either RCN, and for each atom calculates various two-configuration radial integrals: overlap integrals $\langle P_{nl}|P_{n'l'}\rangle$, configuration-interaction Coulomb integrals R^k and spin-orbit integrals $\zeta_{nl'n'l'}$, and radial electric-dipole and electric-quadrupole integrals.
- **RCG [1]** (by R. D. Cowan) computes the angular factor of various matrix elements involved in the theory of atomic structure and spectra. It computes the XAS spectrum in spherical symmetry.
- **RACER [2]** (by B. T. Thole) calculates all the required quantities involved in point-group calculations. It computes the XAS spectrum in lower symmetry when the initial and final state are characterized by one configuration only.
- **TotalFluor** (by B. T. Thole, H. Ogasawara, M. A. van Veenendaal, P. Ferriani, and C. M. Bertoni) computes Hamiltonians and Transition matrices in lower symmetry. It computes the XAS spectrum in lower symmetry in cases of interacting configurations as well as Resonant Inelastic X-ray Emission Spectra.

The sequence of the required calls, together with the provided options and data, are collected in a so-called *workspace* (which can be stored in a file with extension *.rgs*). When a workspace is *runned*, Missing executes the external calls following three main steps:

1. Builds an input file on the base of user options and data (the user is also allowed to give the input file directly if needed)

2. Runs the external executable in batch-mode grabbing the screen output messages, any error message and keeping trace of all the output data files
3. Rearranges all the grabbed data so that they are available to the user in separate windows of the main program

After running all the required programs related to a specific calculation, the user can access a postprocess phase where a series of useful plots are generated. In particular this option is available via the export to an HTML archive: a web-ready hierarchical document is created with links to a summary of the input/output data of each call and to high quality PDF plots and plot-ready raw files of spectra and other useful functions.

5 How to perform an X-ray absorption calculation

This section details which steps must be followed to perform a calculation of X-ray absorption in the case where the initial and the final state are characterized by one configuration only.

5.1 RCN program

The program *RCN* allows to define the configurations of the initial and final states of the transition. To call it use the *Add RCN call* command from the *Application* menu bar, or the *N* button (see Fig. 2). Use the *Configure* button to define the configurations of the initial and final state of the transition. Each

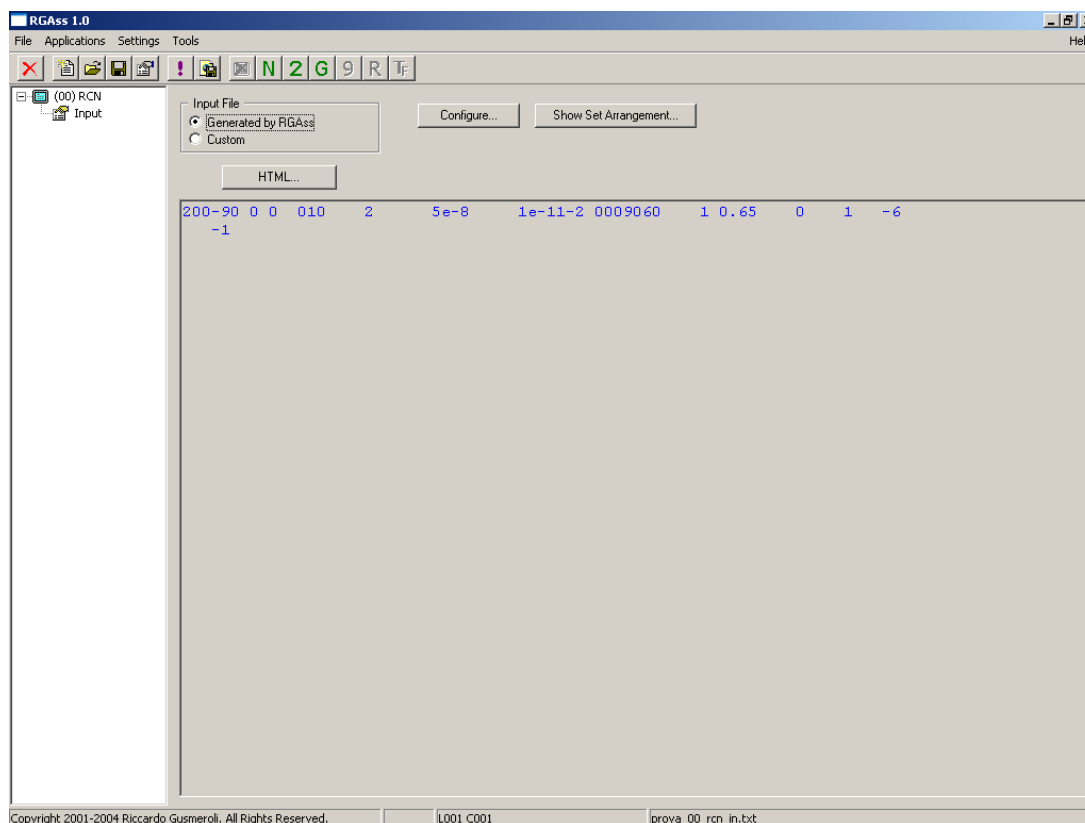
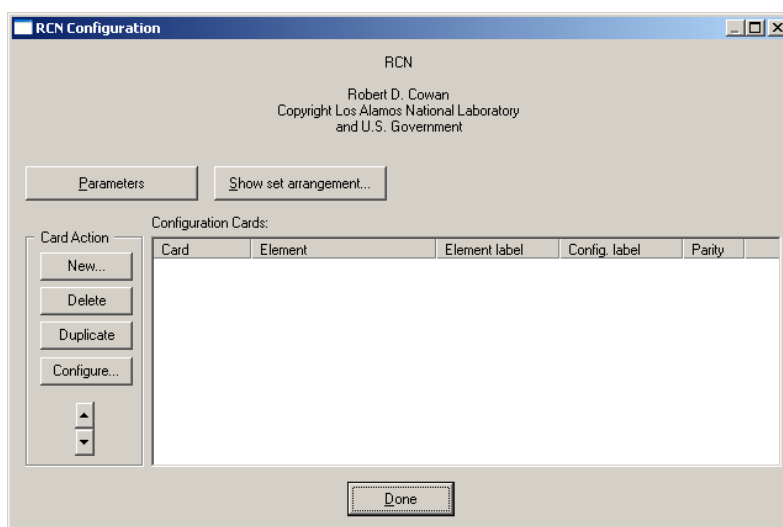
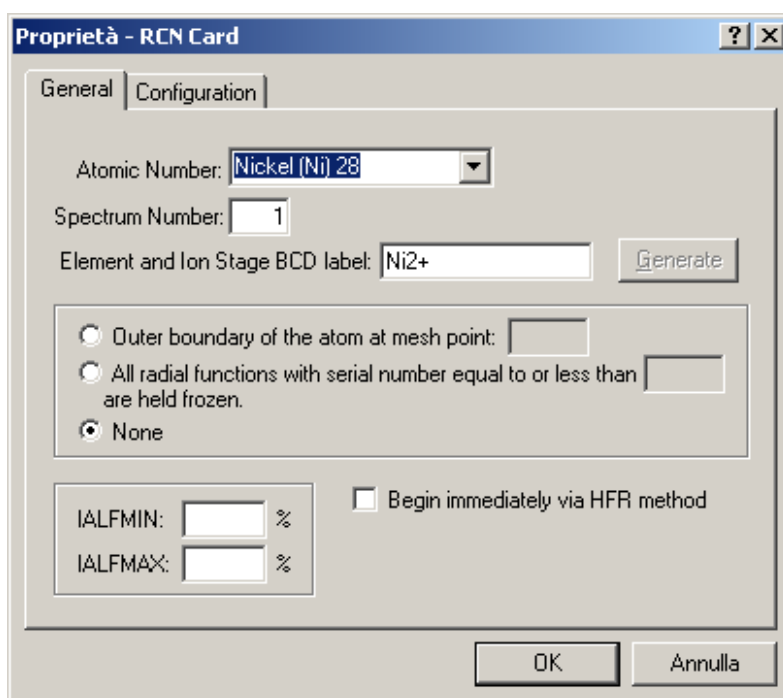


Figure 2: RCN program main panel.

configuration is called *Card* for obvious historical reasons.

To create a configuration card use the *New...* button from the screen shown in Fig. 3. Under the *General* tab you must specify the element and can give a label to the element that you are investigating, for instance *Ni²⁺* (see Fig. 4). Do not worry about all the other parameters, they are fine as they are. Under

Figure 3: RCN *Configuration* panel.Figure 4: RCN *General* tab in the *Configuration* panel.

the *Configuration* tab you now specify the occupation numbers of all orbitals involved in the transition and can give it a label (like $2p6\ 3d8$, see Fig. 5).

When you have specified all configurations press *OK*. You can verify that the configurations that you have created are possible initial and final states of a dipole transition by looking at their parity (either the color of the arrow at the most left side, or the *Parity* column). The *Show set arrangement* button tells you whether the configurations have the same ionization state.

To modify a configuration card click on it and use the *Configuration* button. You can change the order of the created configurations by using the up and down arrow buttons.

Finally, the *Parameters* button gives access to a large number of parameters that determine the accuracy of the calculation. They give origin to all the numbers that appear in the first row of the input. Some of

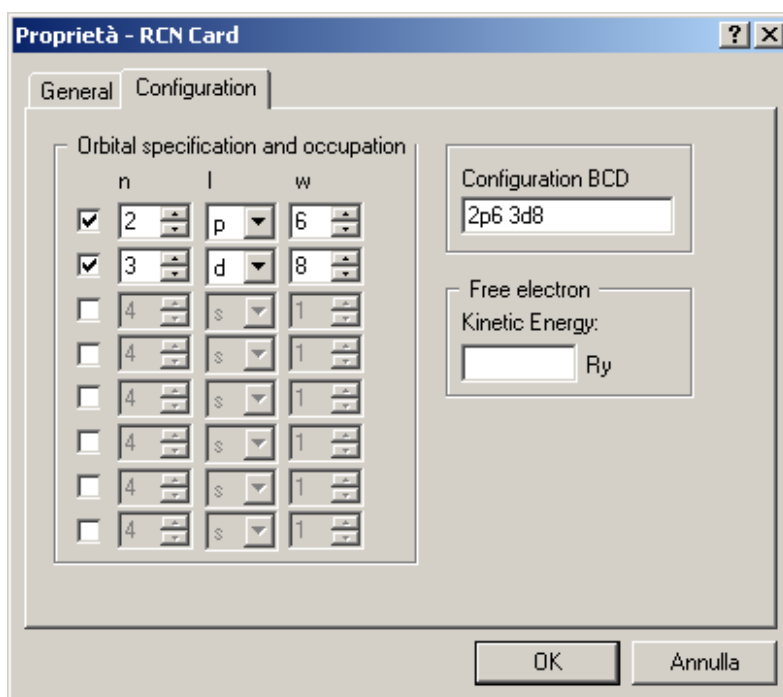


Figure 5: RCN *Configuration* tab in the *Configuration* panel.

them are self-explanatory, many are not. You should not need to change them. In case you really wish to know their meaning and effect you are welcome to refer to Cowan's original manuals. Now you can press the *Done* button. You should see something similar to Fig. 6.

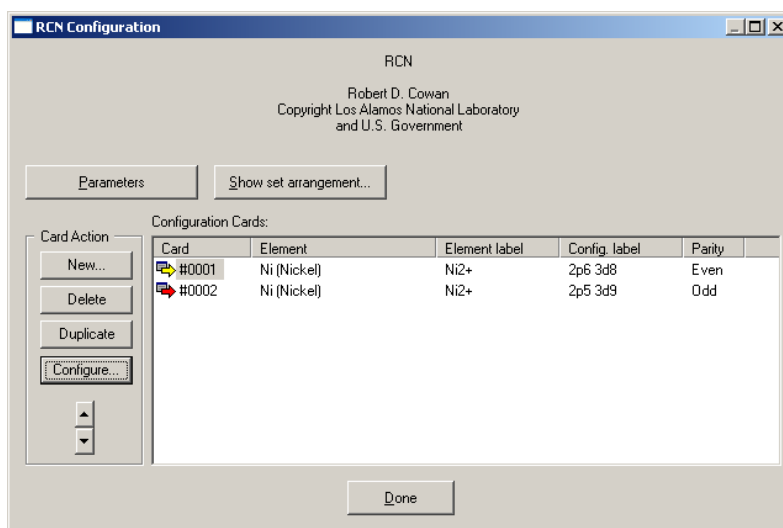


Figure 6: RCN *Configuration* panel after creation of configuration.

One more button, that is present in most of the program calls is the *HTML* button. This button is to define the format and content of the HTML output.

When you have performed all the detailed steps run the program, either through the *Run* command in the *Applications* menu, or through the button with the exclamation mark. It is not mandatory to run each program separately and you could run everything at the end, when all programs have been defined. However, it is better if you do it at each step: in fact by doing so you will be able to see the input created by each program for the following program, and to follow better the instructions.

5.2 RCN2 program

The program *RCN2* computes the average energies, the radial integrals and the spin-orbit parameters of the electronic configurations defined in RCN. To call the program use the *Add RCN2 call* command from the *Application* menu bar, or the 2 button (see Fig. 7). In this program you can set some parameters

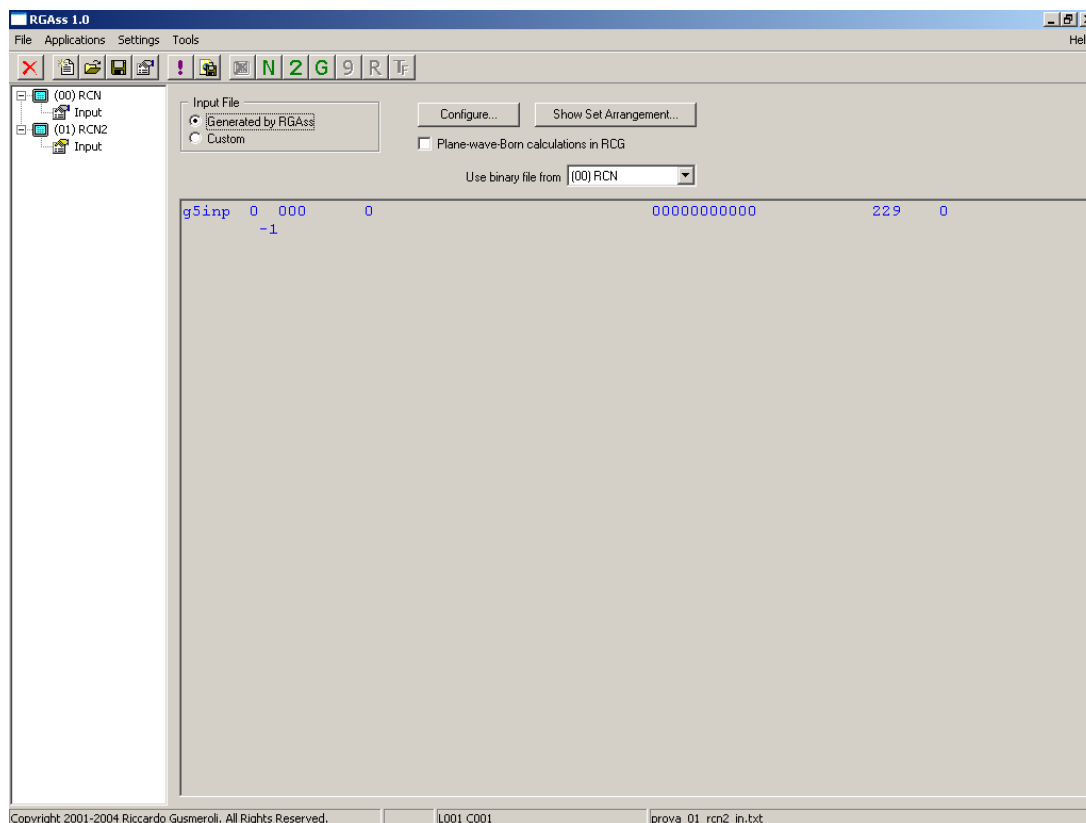


Figure 7: RCN2 program main panel.

that influence the calculation performed in the subsequent steps: this is done through the *Configure...* button. The program RCN allows to define the configurations of the initial and final states of the transition. To call it use the *Configure...* button.

The *General* tab (Fig. 8) defines whether the radial integrals are multiplied by the overlap integrals and whether the integrals needed for the computation of an electric quadrupole transition should be calculated.

The *Numeric Parameters* tab (Fig. 9) is particularly important. It defines the factor for rescaling the Slater integral values with respect to their atomic value in order to simulate the effect of the intra-atomic correlation not accounted for in the HartreeFock approximation. $F^k(l_i, l_j)$, $F^k(l_i, l_i)$, $G^k(l_i, l_j)$ and $R^k(l_i, l_j, l'_i, l'_j)$ are the Slater integrals involving different shells. ζ_i is the spin-orbit parameter. The "normally" used values of the rescaling factors are 0.8 for the Slater integrals and 1 for the spin-orbit factor.

Note that the order in which these parameters are listed is used to identify them as they appear in the input of RCG (see following section).

The *Output* tab (Fig. 10) does not require to be modified.

5.3 RCG program

The program *RCG* receives as input the output from program *RCN2* and computes the eigenvectors and eigenvalues of the specified configurations. If the calculation is performed in spherical symmetry (we explain later how to define the symmetry) then it will also compute the absorption spectrum. Otherwise

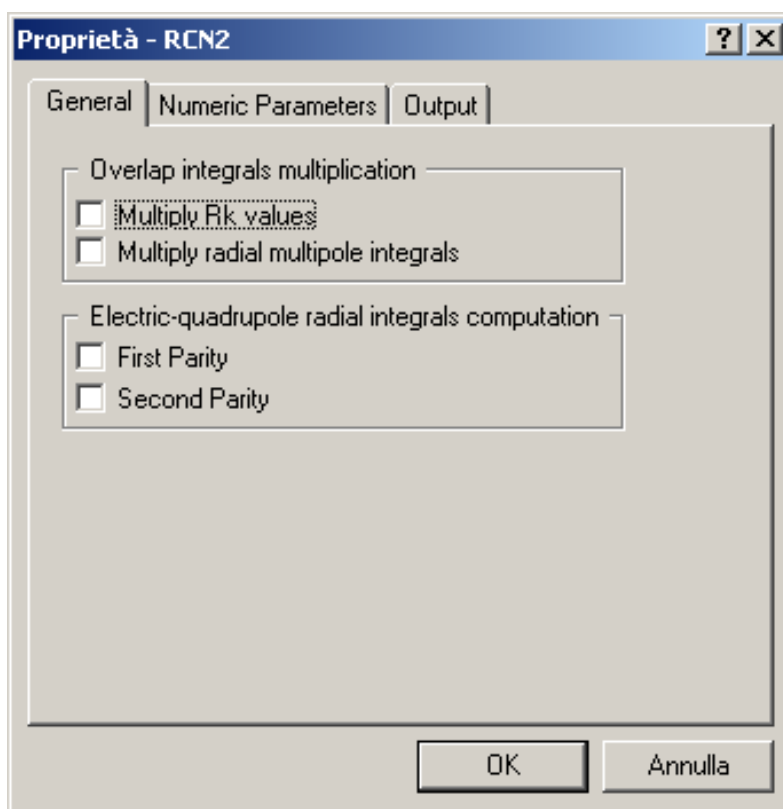


Figure 8: RCN2 Configuration *General* tab.

it will produce the input for the next step.

To call the program use the *Add RCG call* command from the *Application* menu bar, or the *G* button. The main panel will appear as in Fig. 11 if you have not run the previous programs. Otherwise it will look as in Fig. 12.

The input that appears in the panel is the output of RCN2. As anticipated in the description of the RCN2 parameters, the values listed after each configuration are the average energy, the Slater integrals and the spin-orbit parameter. They are identified by the last digit, that corresponds to the order in which they are listed in the *Numeric Parameters* tab of the *Configuration* of RCN2: values ending with 0 indicate the average energy, ending with 1 indicate the Slater parameter of type $F^k(l_i, l_j)$, with 2 the Slater parameter $F^k(l_i, l_i)$, with 3 the Slater parameter $G^k(l_i, l_j)$ and with 4 the Slater parameter $R^k(l_i, l_j, l'_i, l'_j)$ (that is used only in those cases where interaction among different configuration in the same state is used).

The *Configure...* button has many tabs, of which we address only the *General* and the *RME* ones. The *Printout 1*, *Printout 2* and *Printout 3* tabs do not need to be modified, and the *Rearrange* tab will be detailed later when describing how an X-ray emission calculation is performed.

The *General* (shown in Fig. 13) is to be used in cases that are slightly more sophisticated than the example that we are giving here, i.e. in the cases where interaction among different configurations must be taken into account. So, if the initial state (referred to as *First parity/lower level* or the final state *Second parity/upper level*) is made up by more than one of the configurations listed in RCN, this must be declared in the *Transitions to be included* box. We do not detail here the other boxes, which are not of broad use, apart from the *Coupling* box, that allows to select between *LS* and *JJ* coupling.

The *RME* tab (*RME* stands for *Reduced Matrix Elements*) is extremely important and is needed in all cases where the calculations are performed in non-spherical symmetry. This tab is shown in Fig. 14. The terms that must be added to the spherical hamiltonian are specified here in form of *Operators*: the *Shell* operator allows to specify the particular symmetry (cubic Oh, tetrahedral C4h, ...) of the system. The *Spin* operator is required to specify the presence of an exchange-split field. The procedure to include those operators in the calculation is the following:

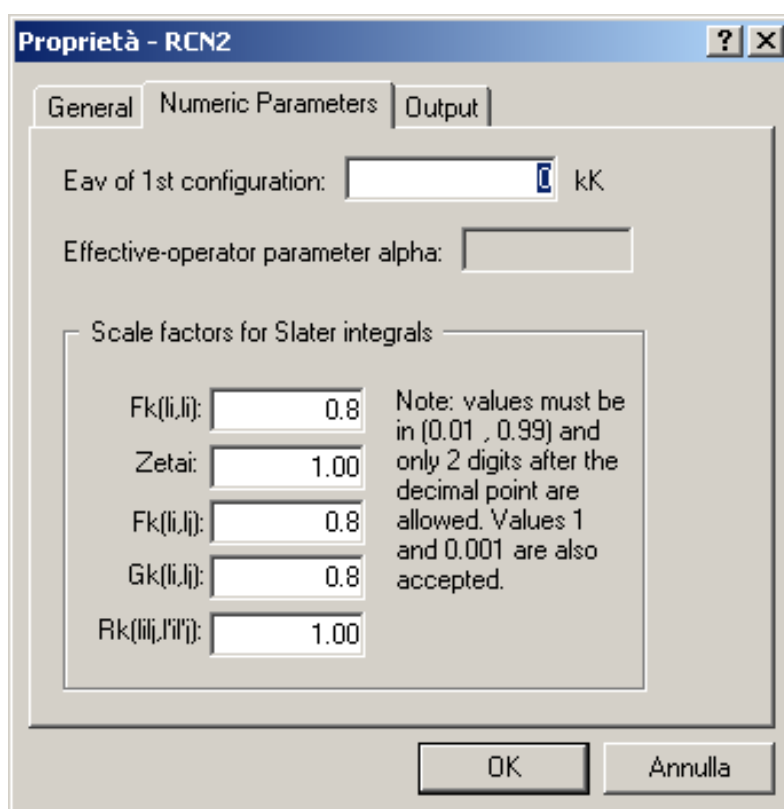


Figure 9: RCN2 Configuration *Numeric Parameters* panel.

Choose the operator through the *Add...* button

Check the box corresponding to the parity (i.e. the initial or final state, or both) and orbital on which the operator should act. The order of the orbitals corresponds to the one listed in the input of *RCN*.

You will need to modify the numbers in the following lines of the panel in some special cases: the minimum and maximum values of J (for *Crystal Field matrix elements* calculation) are 4 most of the time but might be 2 and 6 in some cases (as the one of the present example). We will give some hint about this point in the section 5.4. The *Pole* values of the *Interaction matrix elements* calculation are always 1 for transitions governed by electric dipole operators, they would be 2 for quadrupolar transitions. Finally, the number after *Number of interacting shells:* indicates that only for the specified number of shells in each state the Slater integrals and spin-orbit parameters will be included in the calculation. Further shells will be considered to be 'continuum' or 'ligand' shells.

If some operators have been chosen in the *RME* tab, then the calculation must continue with the *Racer* program.

In the case of a system that is well described in spherical symmetry, the calculation ends when running *RCG*. After this the spectra can be generated and viewed through the button located to the right of the exclamation mark (or through the *Export as HTML* command in the *File* menu item) as detailed in 7. The parameters that define the generated spectrum must be defined through the *HTML* button on the main screen.

if only the *HTML* parameters are changed, there is no need to re-run the calculation, exporting is enough. The same holds for the *Racer* program.

5.4 Racer program

The *Racer* program comes after the *RCG* program. The call can be added only when *Operators* have been selected in *RCG*, as explained in the previous section (you will get an error otherwise). The input of *Racer* is loaded through the *Load Standard File...* button (Fig. 15). The button gives access to a number of inputs for calculating the spectra in different symmetries. Each item of the *Load Racer Standard File*

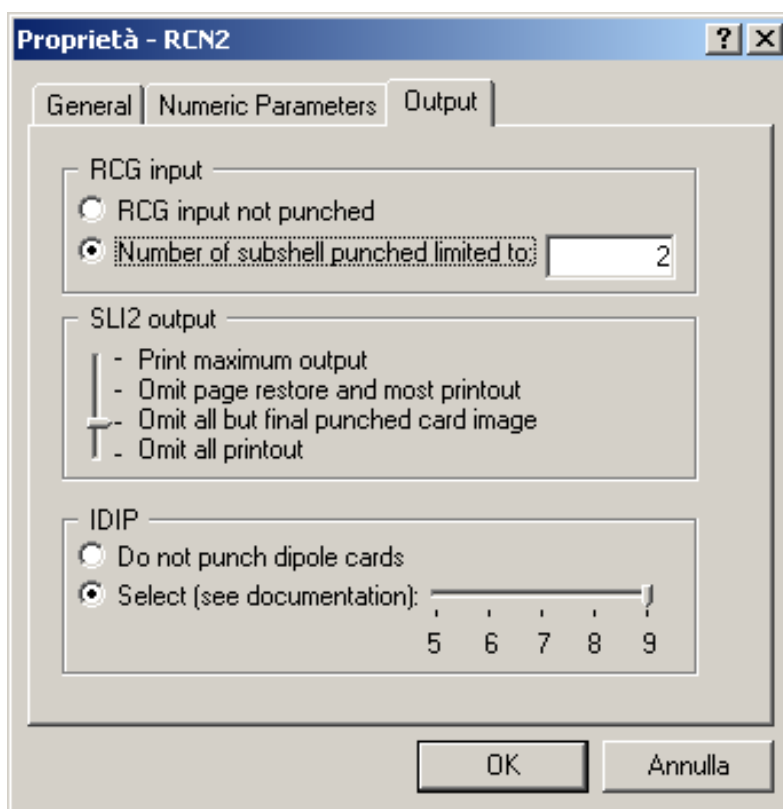


Figure 10: RCN2 Configuration *Output* panel.

input specifies the starting symmetry (always spherical O_3) and the desired symmetry for the system. The available inputs are for calculations in the O_h , O_2 and C_{4h} symmetry. Note that for an absorption calculation you have to select among the options *without TFluor*: these are the input files for emission calculations and will be explained later.

We give some details about the structure of the input shown in Fig. 16 in order to enable the user of the programs to modify them.

The input always starts with Y . The next line contains the name of the routine that is called (*Butler* for absorption calculation and *Racer* for resonant inelastic X-ray emission calculations). The labels that follow give the chain of the symmetries (with their parities) through which the calculations goes from the spherical to the final symmetry. For more information on how to construct these chains you can refer to Chapter 12 in the book by P.H. Butler in Ref. [2]. The available inputs should to the job for most cases.

The following blocks describe the structure of the Hamiltonian for the ground and excited state. With reference to FigureXXX, the Hamiltonian *ACTOR*, having symmetry $0+$ in Butler's notation, is composed by three *OPERATORS* (*HAMILTONIAN*, *SHELL2* and *SPIN2*), that refer respectively to the spherical part of the Hamiltonian, to the Crystal Field part, and to the magnetic exchange interaction part. Note that the operators *SHELL* and *SPIN* end with a number: this number indicates the shell on which the operator acts and must correspond to the number specified in the *RME* tab of the input of *RCG*.

After each operator comes the keyword *BRANCH* followed by a list of symbols intercalated by $>$ numbers. These symbols express the symmetry (in Butler's group notation) through which the system is transformed from the initial spherical to the final desired symmetry (tetrahedral C_{4h} in the present example). Numbers not followed by a $+$ or $-$ sign indicate multiplicity (0 means 1).

The last number of each *BRANCH* line indicates the strength of the operator. The number that ends the *BRANCH* lines of the *SHELL2* operators is related to the Crystal Field parameters $10Dq$, D_s and D_t . These are among the most important parameters you want to include in the calculation, so they deserve some precise practical information on how to use them:

in the case of C_{4h} calculation like the present one, $10Dq$, D_s and D_t are specified separately. The num-

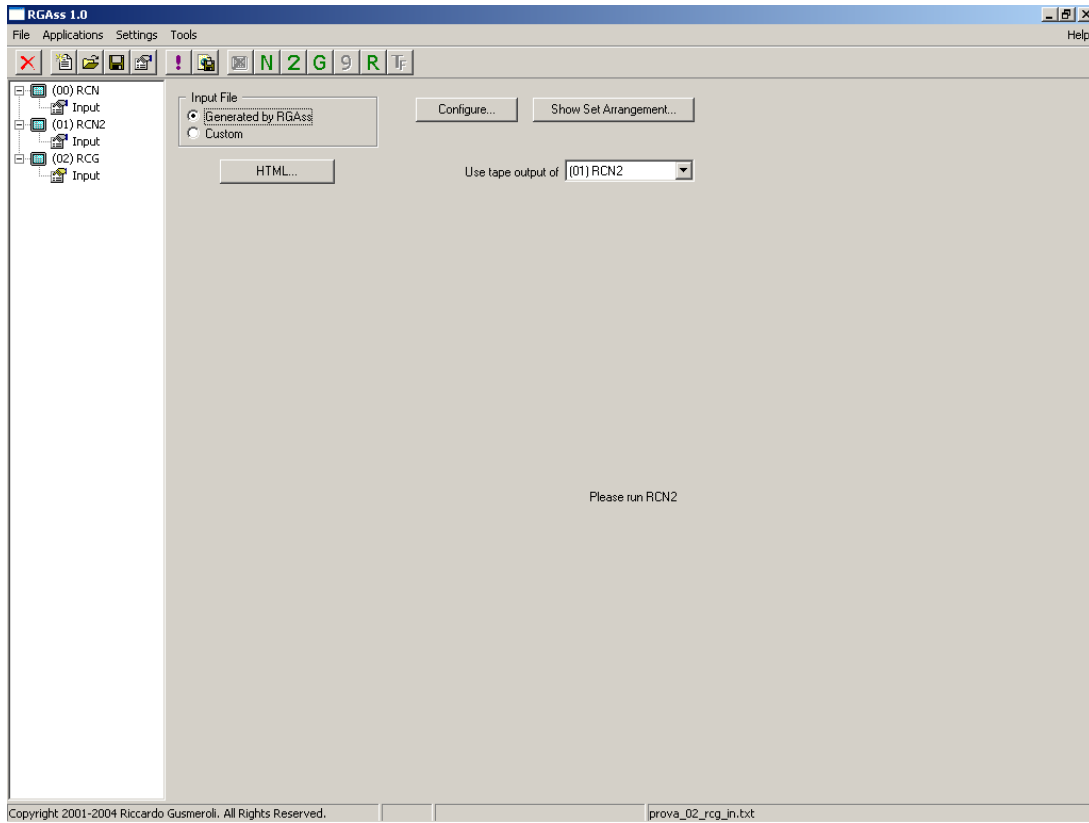


Figure 11: RCG program main panel.

bers that appear in the input of *Racer* are X^{400} , X^{420} and X^{220} (this is easily remembered by looking at the *BRANCH* lines (containing respectively $4+ 0+ 0+$, $4+ 2+ 0+$, $2+ 2+ 0+$). It will be useful to recall here the relations between the $10Dq$, Ds , Dt and the X^{400} , X^{420} and X^{220} :

$$\begin{aligned} X^{400} &= \sqrt{30} \times (6Dq - \frac{7}{2}Dt) \\ X^{420} &= -\frac{7}{2} \times \sqrt{42} \times (Dt) \\ X^{220} &= -\sqrt{70} \times (Ds) \end{aligned}$$

In case of cubic *Oh* symmetry only the $10Dq$ parameter needs to be specified. In this case the relationship between $10Dq$ and X^{400} is:

$$X^{400} = \sqrt{30} \times (6Dq)$$

In practice, in the case of *Oh* symmetry, in order to specify the value of $10Dq$ in *eV*, you must multiply it by $6/10 \times \sqrt{30}$, i.e. by 3.286335345. In the input file of the example, the value given for X^{400} indicates that $10Dq$ was 1 *eV* (Ds and Dt are 0 in the example).

The number that ends the *BRANCH* lines of the *SPIN2* operators gives the value (in *eV*) of the magnetic exchange interaction.

Similar blocks are repeated for the initial ground and the excited final state.

The last block in the input file describes the transition, in particular the symmetry of the operators that

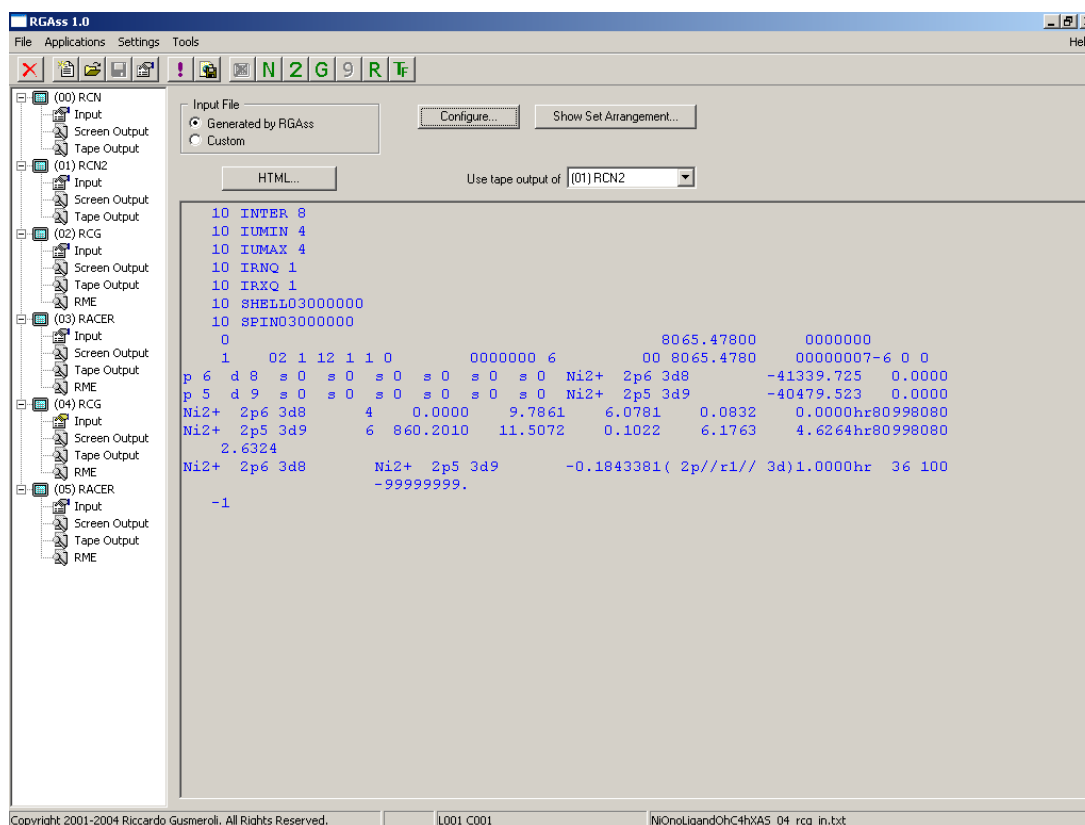
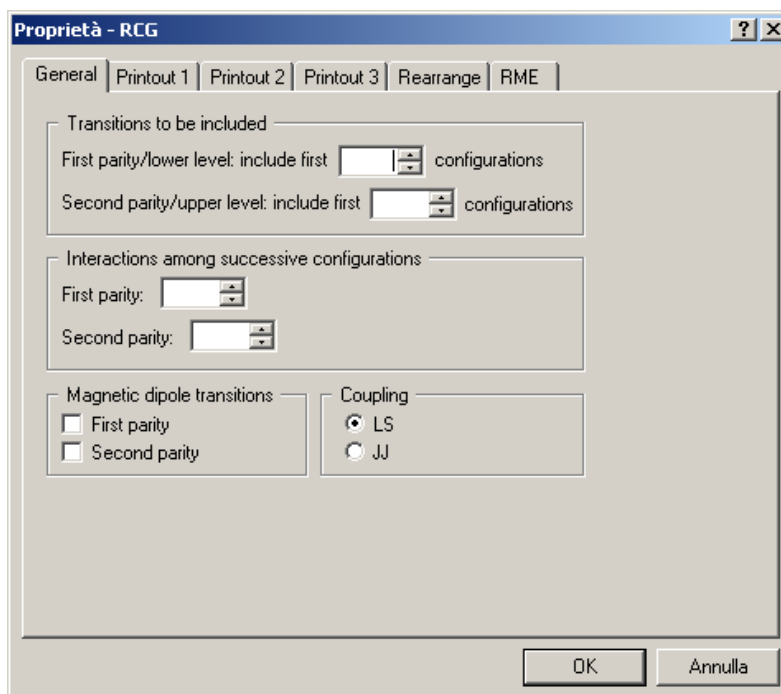


Figure 12: RCG program main panel completed with input.

Figure 13: RCG Configuration *General* tab.

give rise to the absorption. The symbols following the keyword *ACTOR* indicate the symmetry and

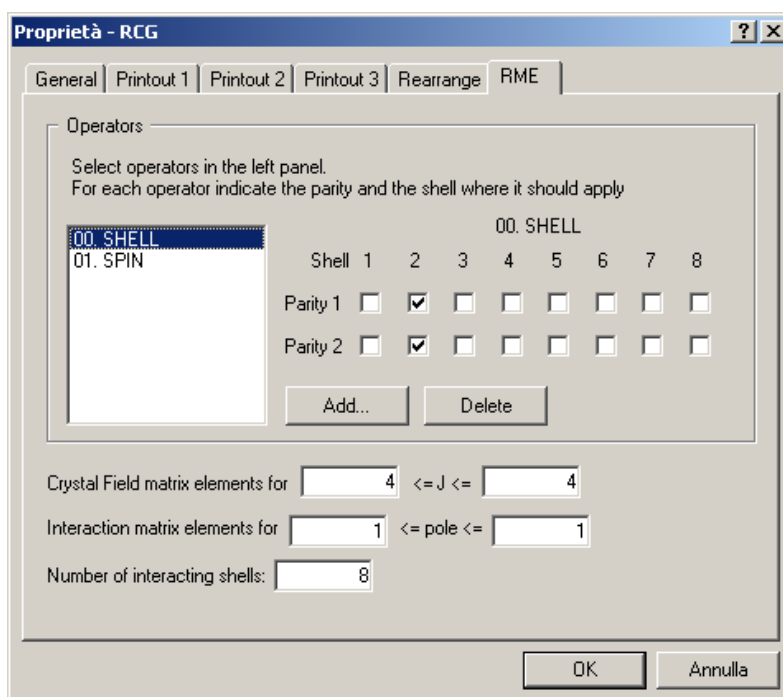


Figure 14: RCG Configuration RME tab.

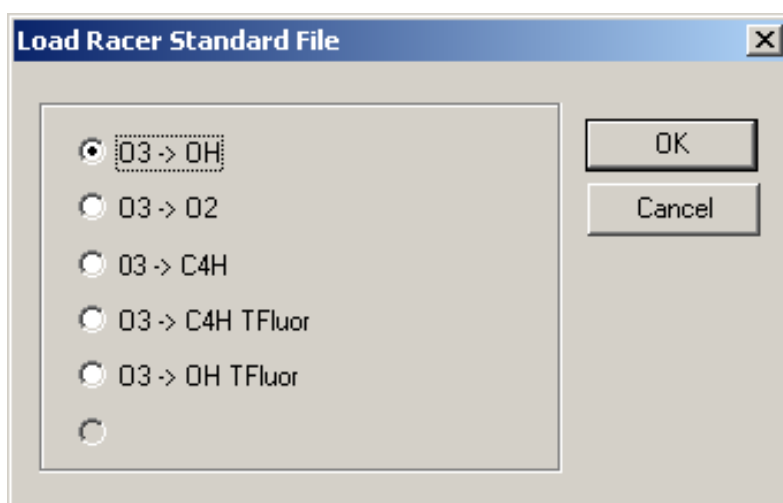


Figure 15: Racer Load Standard File input.

parity of the transition operator: the symmetry of the light in an electric dipolar transition is described by three components, usually referred to as q , which take the value 1, 0, -1 . The $-$ sign that follows indicates that the dipolar transition operator has odd parity.

Warning: if the input contains names that are not recognized by the *Racer* program, the *Screen Output* will show the error message *PIPPPO* (Italian for *Foo*): this tells you that the input needs to be modified.

Side warning: the names following *ACTOR* are labels that can be chosen freely. We suggest however to make as little as possible modifications to the input we provide, in order to reduce the risk of mistakes. The names following *OPER* **cannot** be chosen freely.

Important hint: As might be clear by now, building the input of *Racer*, for instance for a new symmetry, not listed among the standard input files, is not without risk. Especially the construction of the *BRANCH* lines from scratch can be tricky. Of great help can be the *Tape Output* of *Racer*, some part of

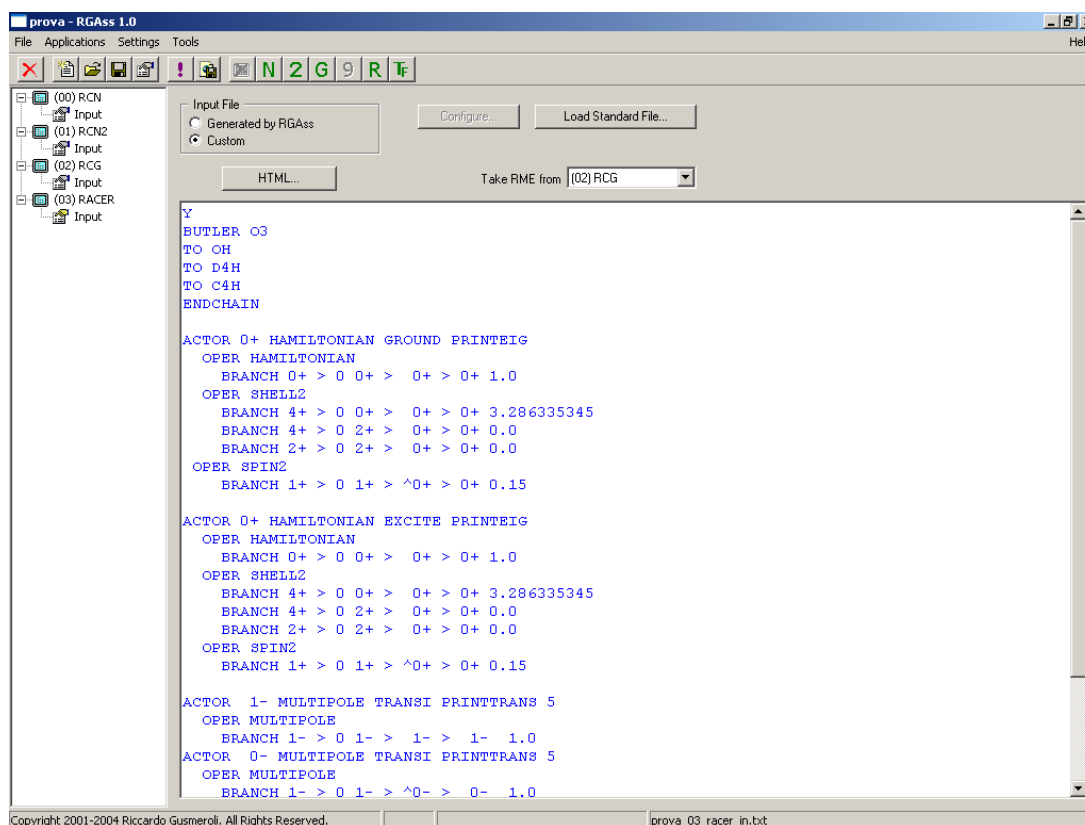


Figure 16: Racer standard input.

which are meaningful also when the program has ended with errors: the section starting with *REPRESENTATIONS* (not far from the beginning), contains all branches for the specified symmetry. As is clear from the standard inputs, branchings of the *HAMILTONIAN* actor must end with $0+$, branchings of the *MULTIPOLE* actors start with $1-$ (the representation of the dipolar light operator in spherical symmetry) and end with the same symmetry as the operator (i.e. $1+$ for the light operator $q = 1+$ and so on). The branches representation listed in that file can be very helpful when trying to deal with a new symmetry.

After successfully running the *Racer* calculation, you can export the results through the button located to the right of the exclamation mark (or through the *Export as HTML* command in the *File* menu item) as detailed in 7. The parameters that define the generated spectrum must be defined through the *HTML* button on the main screen. The panel opened by the *HTML* button (Fig. 17) has two tabs: the *General* tab defines self-explanatory parameters very similar to those of the *RCG* program. The often forgotten *Operators* tab (Fig. 18) allows to define how the elementary spectra are combined to build the final results. The *Load C4H-LZR* button loads the 7 most used combinations, that appear in the bottom part of the panel. Blank spectra allow to define any other possible combination. **If no spectral combination is defined, no spectrum will be computed.** As already said in the *RCG* program section, **if only the HTML parameters are changed, there is no need to re-run the calculation, exporting is enough.**

6 How to perform a resonant X-ray emission calculation

This section explains how to calculate resonant X-ray emission spectra (RXES). We underline that this part is for **resonant** spectra: in fact for non-resonant, i.e. fluorescent spectra, good results can be obtained by performing a *reversed* X-ray absorption calculation, where the excited state is the initial state and the final state is the less-excited state in the transition. In the resonant case the Kramers-Heisenberg formula

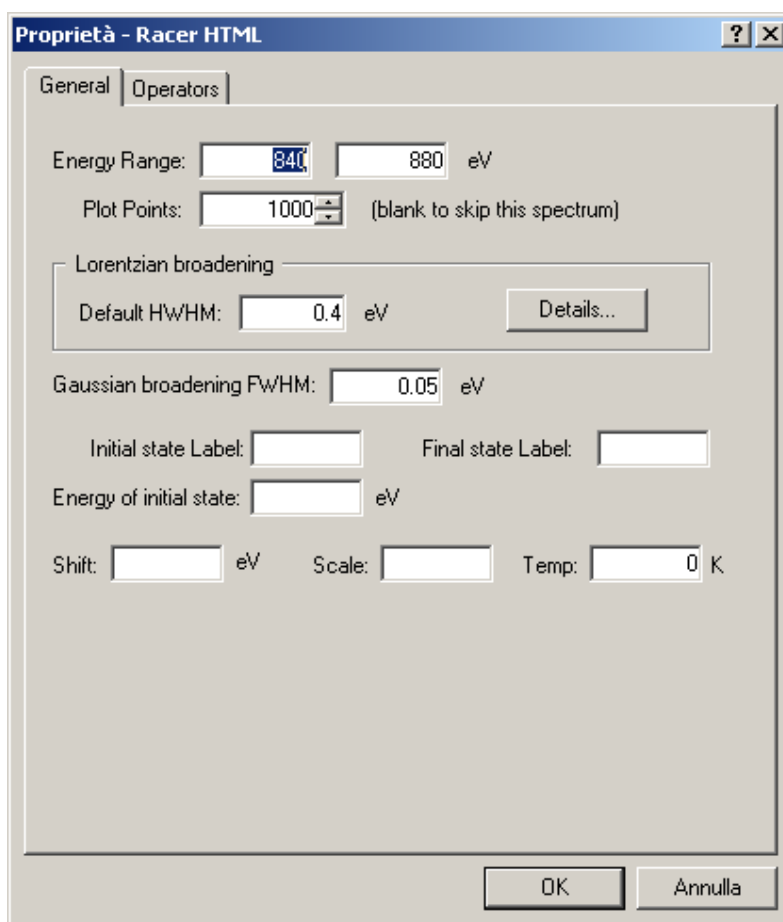


Figure 17: Racer *General* tab in the *HTML* button.

must be included. This is done by performing an additional step in the calculation. We here explain the whole program sequence: in fact all programs detailed before must be used in a slightly different way, as three states (initial, intermediate, final) must be specified. We will explain here only the differences with respect to absorption calculation.

6.1 RCN program for RXES

The only difference with respect to the case of absorption calculation is that three configurations must be specified. Take care that the order in which they must be specified is: **Initial, Intermediate, Final**. This is all for this program.

6.2 RCN2 program for RXES

This program does not require any additional information to what give in the section devoted to absorption calculation.

6.3 RCG program for RXES

In *RCG* some more parameters must be given in the *Configure...* button: as anticipated, the *Rearrange* tab plays a role here: the role of the declared configurations must be specified. In the given example the ground state contains the first configuration, the intermediate state is the third configuration, and the final state is the second configuration (in case of state with multiple, interacting configurations, the panel allows to specify groups of configurations). The lower block (the one referring to *TFluor calculations only*

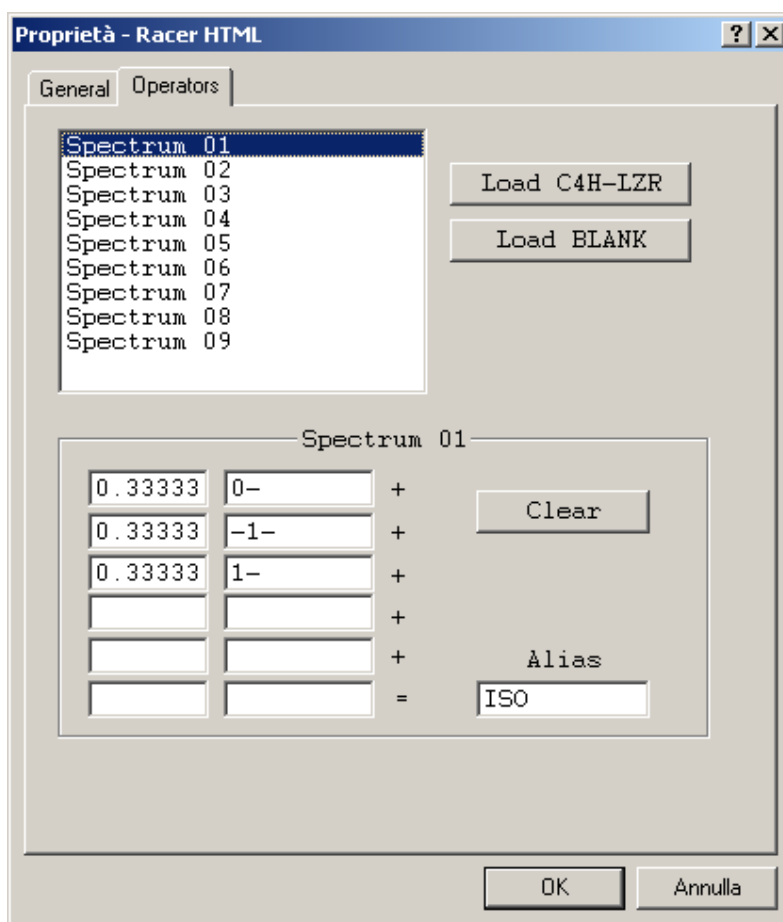


Figure 18: Racer *Operators* tab in the *HTML* button.

gives the right format to the input *RCG* input in view of an *RXES* calculation: in fact in the input file for *RCG*, the

7 Data postprocessing

When all the calls involved in a calculation are executed, the user can access a postprocessing phase via the button *Export as HTML* (Fig. 19). This generates a sort of workspace documentation containing a summary of all input parameters and data, all the output generated by the called applications and a number of plots of physical quantities of interest such as wavefunctions and spectra.

To exemplify the procedure we choose the workspace generated in the *NiO* XAS example of section 5 (Fig. 19). Once the *Export as HTML* button is pressed, a dialog window asks the user for the filename (with extension *.html*) of the main documentation file. In this context we choose the name *NiOXAS.html*: Missing will then create an index file called *NiOXAS.html* and a folder called *NiOXAS_files* containing all the indexed files. As soon as the data are stored, the documentation tree is also opened in the default HTML viewer of the system (Fig. 20).

The documentation window is organized in two tiled frames: the left frame contains an index of all the workspace calls and links to corresponding data files while the right one contains workspace general informations (this latter document is replaced by the desired data document when the user clicks on a link on the right).

Items corresponding to each call include three fixed data files (namely *Input*, *Screen* and *Tape*) and other application-specific ones:

- *Input*: contains all the parameters and the data provided by the user, together with the formatted

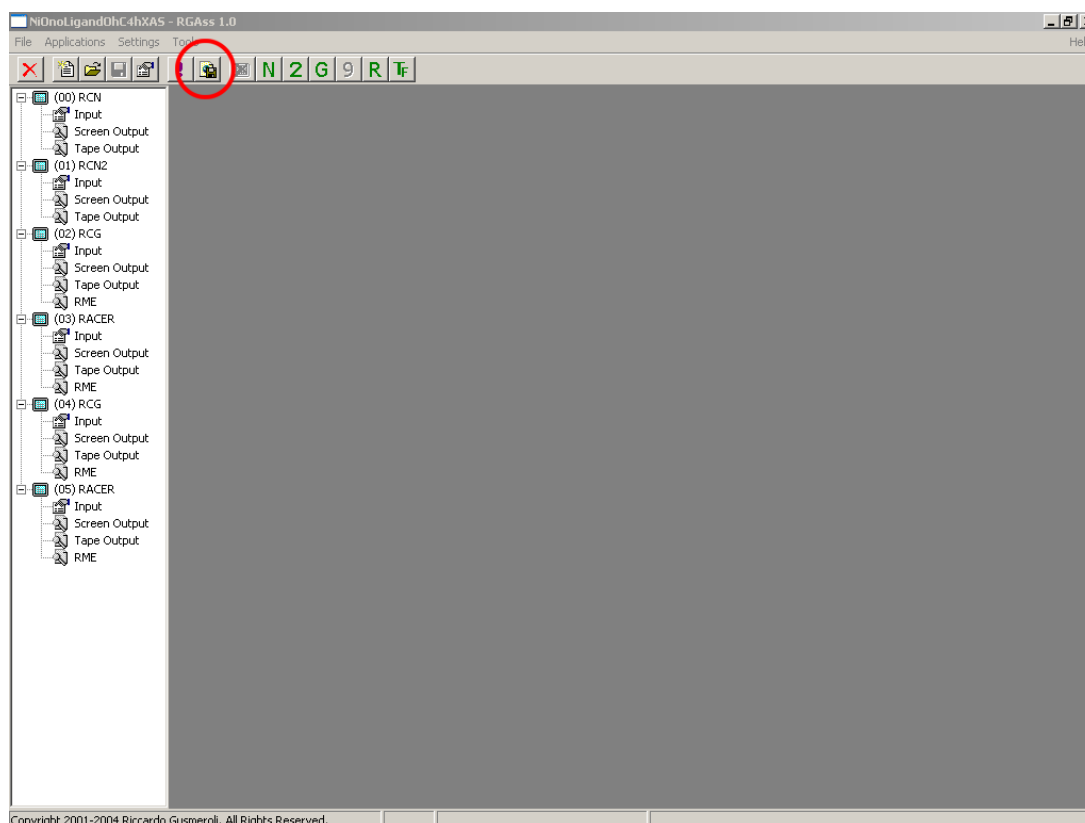


Figure 19: Workspace at the end of a *run* command. The red circle highlights the *Export as HTML* button.

input file generated.

- *Screen*: shows the messages printed on the screen during program execution.
- *Tape*: contains all the human-readable generated tapes
- *Results* (where applicable): links to all the post-processed data such as wavefunctions and spectra.

In our case we are interested to the absorption spectra in C_{4H} symmetry (which in turn was generated by the call to Racer labelled "(03)"). To that aim we click on the *Results* link under the section "(03) RACER" of the left frame, obtaining the view in Fig. 21. A brief description of the resulting page follows:

- A frame in the top section tells the symmetry of interest (C_{4H} in the example) and the transformation chain used to reach it ($O_3 \rightarrow O_H \rightarrow D_{4H} \rightarrow C_{4H}$)
- Under the label *Triads* a list of the transition matrices parsed can be found
- In the *Spectra* frame the user can access the spectral data of interest. In particular:
 1. Near the words *Lines selected* the number of spectral lines selected on the base of user-provided parameters can be found. The word *selected* points to a text-based file with a list of all such lines.
 2. The statement *Spectra plots and tables* introduces the available plots. The word *plots* points to a high-quality PDF file containing all the generated plots in a print-ready fashion. Each plot can also be retrieved in a text-based data file using the following links.

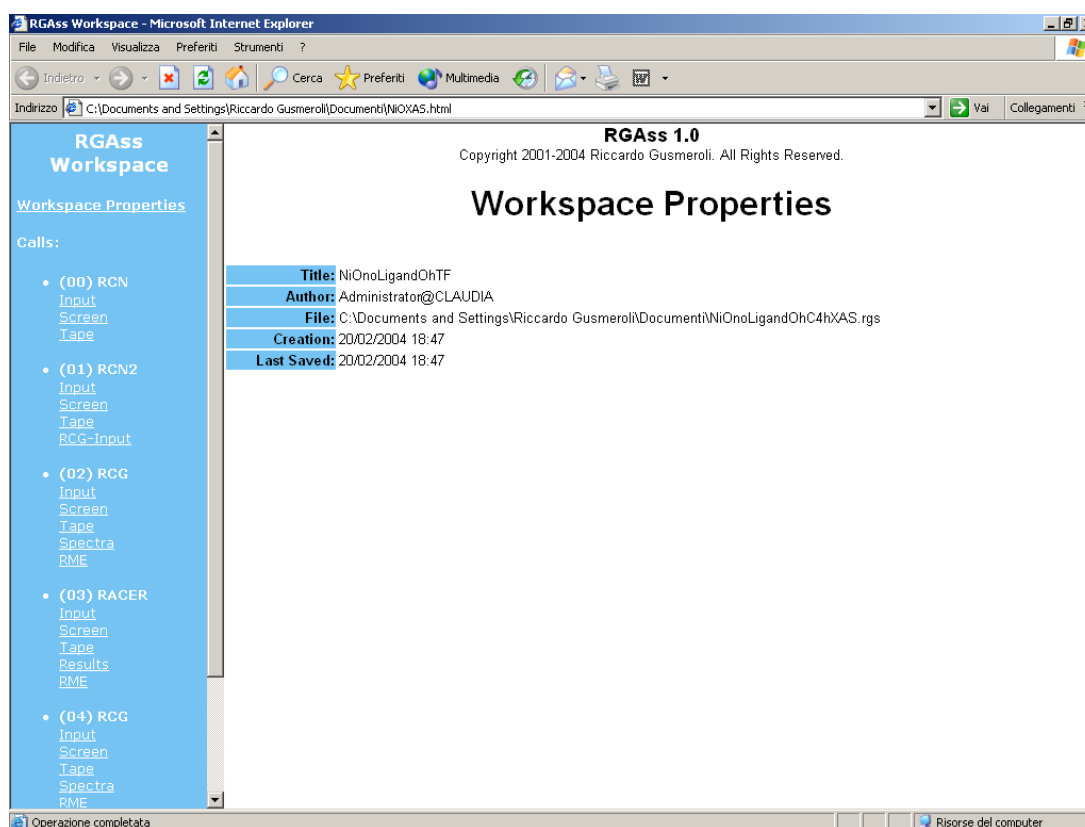


Figure 20: Index file of the documentation tree opened in the default HTML viewer.

8 Software generalities

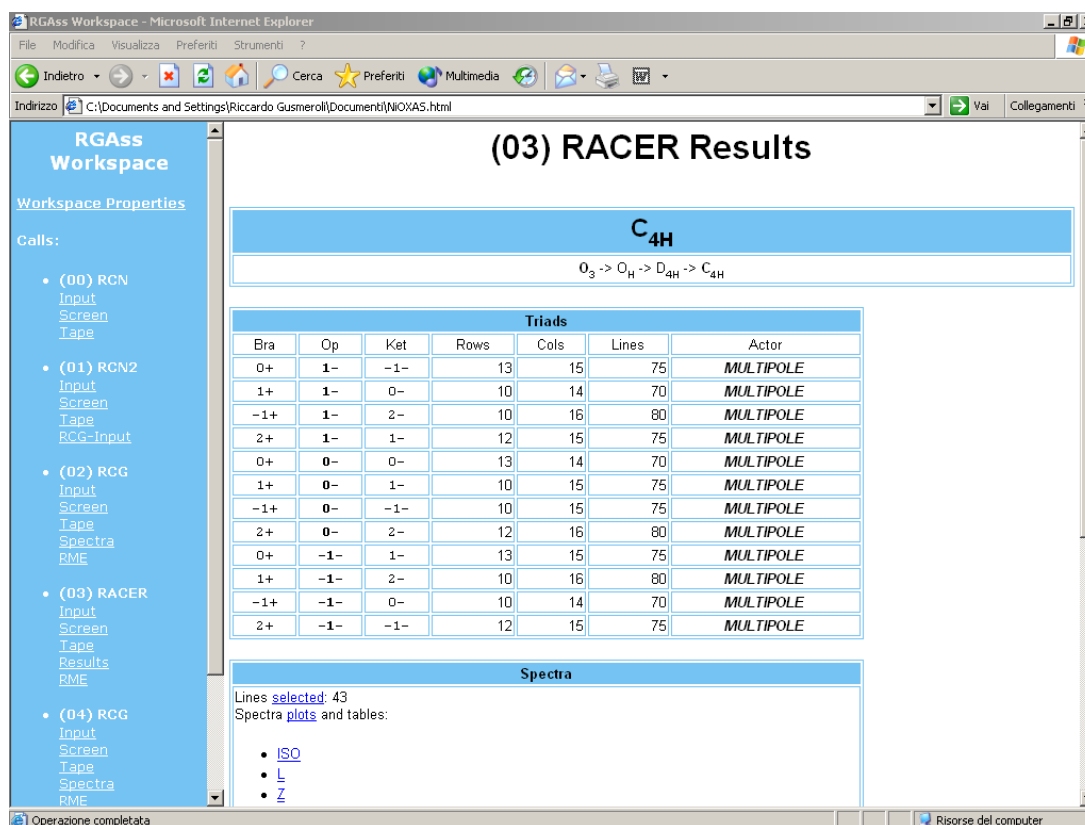
Missing 1.1

Copyright 2001-2004 Riccardo Gusmeroli.
All rights reserved.

The software is a user-friendly PC interface to the Atomic Multiplet Code written by R.D.Cowan (LANL) with extensions by B.T.Thole and others. Porting from the original code to the PC-compatible version is intrinsically prone to the arising of bugs. Many of them have been found and removed by the author but others might still be present. In case of results that are suspicious because undoubtedly contrasting physical expectations, please contact the author enclosing the indicted workspace (see 9 for contact informations).

The right to use the software free of charge is granted to scientific institution provided a reference to the code and its author is included in any publication it contributes to. Any commercial use is instead prohibited without explicit authorization by the author.

The software is provided "as is", without warranty of any kind, express or implied, including but not limited to the warranties of merchantability, fitness for a particular purpose and noninfringement. In no event shall the author be liable for any claim, damages or other liability, whether in an action of contract, tort or otherwise, arising from, out of or in connection with Missing or the use or other dealings in Missing.

Figure 21: Postprocessed results of the Racer C_{4H} calculation.

9 Contact informations

Comments, suggestions and bug-reports can be sent to:

Prof. Claudia Dallera
Dipartimento di Fisica
Politecnico di Milano
Piazza L. Da Vinci, 32
20133 Milano (MI)

Email: claudia.dallera@fisi.polimi.it

References

- [1] R. D. Cowan, *The Theory of Atomic Structure and Spectra*. University of California Press, 1981.
- [2] P. H. Butler, *Point Group Symmetry and Applications - Methods and Tables*. Plenum Press, 1981.