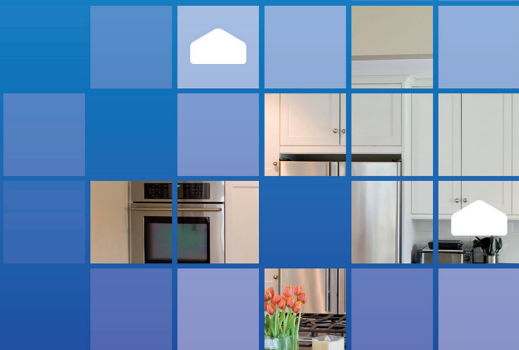


# Stove Alarm SA101

## User Manual

🕒 Safety for Your Kitchen





# Congratulations!

You now own one of the most intelligent  
cooker safety products in the world



<b>1. Innohome Stove Alarm</b>	1-3
1.1. Use of the Stove Alarm	1-2
1.2. Meaning of alarm signals	3
<b>2. Monthly Maintenance</b>	4
<b>3. Low battery alarm</b>	4
<b>4. Stove Alarm Installation</b>	4-5
<b>5. Setting the sensitivity level of the Stove Alarm</b>	6-7
<b>6. Troubleshooting</b>	7
<b>7. Technical Information</b>	8
<b>8. Warranty</b>	8
<b>9. EU Declaration of Conformity</b>	8

More than half of all recent house fires in Britain resulted from cooking (National Fire Statistics, Great Britain, 2010-2011).

## 1. Innohome Stove Alarm

### 1.1 Use of the Stove Alarm

The Stove Alarm detects temperature and its rate of change on the cooker surface. The alarm is triggered when the cooker temperature exceeds safe levels or when a rise in temperature is faster than in normal cooking.



*The push-button (1) is used for resetting the alarm. The light (2) will light up at one-minute intervals when the Stove Alarm is on.*

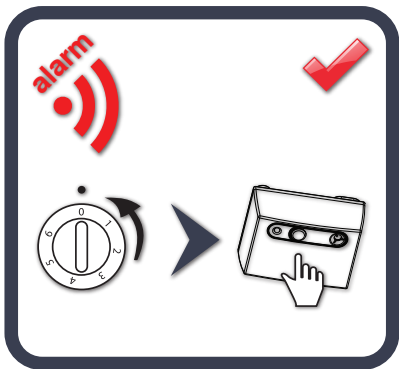
In a hazardous situation, the alarm is triggered in 3 to 25 minutes. The Stove Alarm first emits a one-minute long pre-alarm signal, which is followed by the alarm signal. The alarm is reset by first turning the cooker knobs to '0', then pushing the Stove Alarm push-button once. While the Stove Alarm is new, it first needs to adjust to the installation environment and the users' cooking styles. This may result in false alarms at first. If the Stove Alarm is signalling during a normal cooking situation, reset the alarm during the pre-alarm signal. This will cause the Stove Alarm to reduce its sensitivity. See table in section 1.2 for description of the alarm signals.

Please note that the alarm should only be reset during the pre-alarm signal, if the alarm was triggered by a normal cooking situation, as resetting the pre-alarm signal results in the lessened sensitivity of the Stove Alarm.

## 1. Innohome Stove Alarm

The alarm also gets reset automatically when the hobs have been turned off and the cooker temperature starts to fall. When the alarm is reset by falling temperature, the sensitivity level of the Stove Alarm is not affected.

N.B. The Stove Alarm's alarm is not triggered if the hob's temperature is too low for a hazardous situation to be identified, or if the cooker automatically limits a temperature increase. When the alarm has been reset manually it cannot be triggered by the rate of temperature change for 30 minutes, but can still be triggered by the heat level. The Stove Alarm is an additional safety device that does not necessarily cover all possible hazardous situations, but that significantly improves the safety of the cooker.



## 1. Innohome Stove Alarm

### 1.2 Meaning of alarm signals

Sound	Meaning	Course of Action
A short 'beep' every few seconds	The Stove Alarm has detected a high temperature or a fast temperature rise on the cooker surface. This is a pre-alarm signal that starts one minute before the actual alarm. Resetting the pre-alarm signal reduces Stove Alarm's sensitivity.	Reset the pre-alarm signal by pushing the push-button once. The pre-alarm signal should be reset only if the alarm was triggered by a normal cooking situation as resetting the pre-alarm signal results in the lessened sensitivity of the Stove Alarm.
Repetitive fast 'beep, beep, beep'	The Stove Alarm has detected a high temperature or a fast temperature rise on the cooker surface (alarm signal).	First turn off the cooker hobs, then reset the alarm signal by pushing the push-button once.
A signal once a minute	The Stove Alarm has a low battery.	Replace the Stove Alarm, see section 4.

## 2. Monthly Maintenance

Test the functionality of the Stove Alarm at least once a month by pressing the Stove Alarm push-button until you hear a signal.

Clean the Stove Alarm by wiping it with a cloth dampened with a mixture of household detergent and water. Only use a cloth that does not leave fibres.

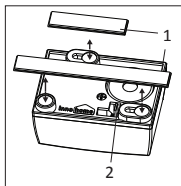
## 3. Low battery alarm

A low battery in the Stove Alarm causes the Stove Alarm to emit a signal once a minute. The battery alarm can be reset by pushing the Stove Alarm push-button once. The battery alarm will restart after 12 hours. The battery is fixed (with a 10 year battery life) and can not be changed. The old Stove Alarm should be recycled appropriately when replaced.

## 4. Stove Alarm Installation

1. Remove the Stove Alarm from its packaging and allow it to reach room temperature, waiting around 15 minutes.

2. Connect the Stove Alarm battery by using the jumper (2) on the Stove Alarm (a jumper is a type of a short conductor): remove the jumper and place it back so that it connects the two pins (see image on the next page). The Stove Alarm will emit a signal as the battery gets connected. Initialize the Stove Alarm by pressing the push-button once.





## 4. Stove Alarm Installation

3. Attach the Stove Alarm to the range hood with magnets, as close to the central point of the cooker as possible. If the range hood has halogen lights, make sure there



Connecting the battery using the jumper

is at least 4" (10 cm) distance between the lights and the Stove Alarm. Alternatively, the Stove Alarm can be attached using screws (remove the magnets first by opening the cover and pushing them out with a screwdriver) or adhesive tape (1). If using adhesive tape, first make sure that the surface is cleaned and dry. If the cooker has no range hood, the Stove Alarm can be attached to the wall, approximately 16" (40 cm) above the cooker, or to the cooker panel.

4. Testing after installation: Push the Stove Alarm push-button until you hear a signal.

The sensitivity level is factory set to suit most installations. If this level is unsuitable for your cooker and results in false alarms, resetting the alarm during the pre-alarm signal will cause the Stove Alarm to reduce its sensitivity (see section 1). However, if the Stove Alarm is installed higher than 25.5" (65 cm), or if the sensitivity level needs to be pre-set to a certain level (when used in supported housing, for example), set the sensitivity level manually (see section 5). Note that when installed on the wall, the Stove Alarm can only be attached at the approximate height of 16" (40 cm).



## 5. Setting the sensitivity level of the Stove Alarm

The sensitivity level determines the level of heat or the rate of temperature change required to activate the Stove Alarm.

The Stove Alarm responds to the user resetting the pre-alarm signal (see section 1) by automatically reducing its sensitivity.

**The sensitivity level needs to be manually adjusted if the Stove Alarm is installed higher than 25.5" (65 cm), or if the sensitivity level needs to be pre-set to a certain level (when used in supported housing, for example).** See recommended sensitivity level, depending on the installation height, from the table below.

Note that when installed on the wall, the Stove Alarm can only be attached at the approximate height of 16" (40 cm).

cm	120	90	80	70	60	50	40	--	30
inch	39	35	32	28	24	20	16	--	11
level	1	2	3	4	5	6	8	--	16

The grey area indicated in the table shows where in normal use, no manual setting of the sensitivity level is required. The level is indicated by the numbers 1 to 16, where 1 represents the most sensitive level, and 16, the least sensitive. The factory setting is 5.

### Setting the sensitivity level manually:

- For a new Stove Alarm: Connect the battery to the Stove Alarm using the jumper on the Alarm as explained in section 4, point 2. In the following 20 seconds carry out the procedure described below in steps 2-5.
  - For a Stove Alarm that has already been installed: Disconnect the



## 5. Setting the sensitivity level of the Stove Alarm

battery by removing the jumper (2) (see section 4) for a short while, and then reconnect it. In the following 20 seconds carry out the procedure described below in steps 2-5.

2. Hold the Stove Alarm push-button for about 5 seconds, until you hear a signal.
3. Release the push-button and hold again for 5 seconds, until the Stove Alarm emits a signal.
4. Now press the push-button as many times as the level (1-16) you wish to set it to. Wait for the light to go off between each press of the push-button.
5. The Stove Alarm will now emit twice as many signals as the level it is set to, in two lots: 2+2 signals for level 2, 3+3 signals for level 3, 4+4 signals for level 4, and so on.

## 6. Troubleshooting

### The Stove Alarm signals in a non-hazardous situation

- After the Stove Alarm is installed, it needs to adjust to the kitchen environment, and 'learn' not to react in normal cooking situations. If the Stove Alarm starts to signal in a normal cooking situation, reset the alarm during the pre-alarm signal. This will cause the Stove Alarm to reduce its sensitivity.

### The Stove Alarm does not signal when it should

- Increase the Stove Alarm's sensitivity (see 'Setting the sensitivity level of the Stove Alarm' section 5).
- Test the alarm by pushing the Stove Alarm push-button until you hear a warning tone. If the Stove Alarm neither emits a tone nor flashes its light, the battery may be flat.
- If the device still does not work, contact the retailer.

## 7. Technical Information

Certification: CE, Casing IP20  
Patent FI 117878, PCT pending

**Unit:** SA101

**Alarm signal:** 90 dB / 10 cm

**Power:** Battery (10 years lifespan, based on average number of alarms) or fixed power supply (5V)

**Alarm activation time:** 3 – 25 min

**Features:** Intelligent heat sensor. Max sensing distance 1.2 m (3.9 ft).  
Adjustable sensitivity. Manual and automatic alarm reset.

## 8. Warranty

This product has a 24-month warranty that covers defects in material or workmanship, starting from the date of purchase. The warranty does not cover any indirect damage caused by a malfunctioning appliance, damage caused by negligence, or damage caused by failure to follow the instructions properly.

## 9. EU Declaration of Conformity

EN 60 730-1:2000 + A12:2003 + A1:2004 + A13:2004 + A14:2005 + A15:2007 + A16:2007, EN 60730-2-1:1997+A11:2005, Directives Low Voltage Directive: 2006/95/EC EMC- directive: 2004/108/EC. Materials: EN50581:2012. Halogen free and fire rated plastic. Flammability rating V-0. Espoo 1.6.2013



Technical Director Matti Myllymäki

# SAFETY FOR YOUR KITCHEN



**inno** **home**

## **Innohome Ltd**

Tel: +358 9 4114 3359

Web: [http:// www.innohome.com](http://www.innohome.com)

Email: [info@innohome.com](mailto:info@innohome.com)

Metsänpojankuja 3

02130 Espoo

Finland