

# **USB driver instalation User Manual**

*Version 1.0, Code No. 20 751 029*

---

The logo for BENNING, featuring the word "BENNING" in a bold, blue, sans-serif font. The letters are slightly shadowed, giving it a 3D appearance. The logo is positioned at the bottom center of the page, below a horizontal line.

<b>1. Installing USB driver on your PC (WINDOWS XP)</b>	<b>3</b>
1.1. Standard USB communication setup	3
1.2. Installing PC software	7
1.3. Configuring an USB connection between BENNING IT 120 and PC	7
<b>2. Debugging communication (WINDOWS XP)</b>	<b>9</b>
<b>3. Uninstalling USB Drivers (WINDOWS XP)</b>	<b>16</b>
<b>4. Installing USB driver on your PC (WINDOWS 2000)</b>	<b>17</b>
4.1. Standard USB communication setup	17
4.2. Installing PC software	23
4.3. Configuring an USB connection between BENNING IT 120 and PC	23
<b>5. Debugging communication (WINDOWS 2000)</b>	<b>25</b>
<b>6. Uninstalling USB Drivers (WINDOWS 2000)</b>	<b>32</b>

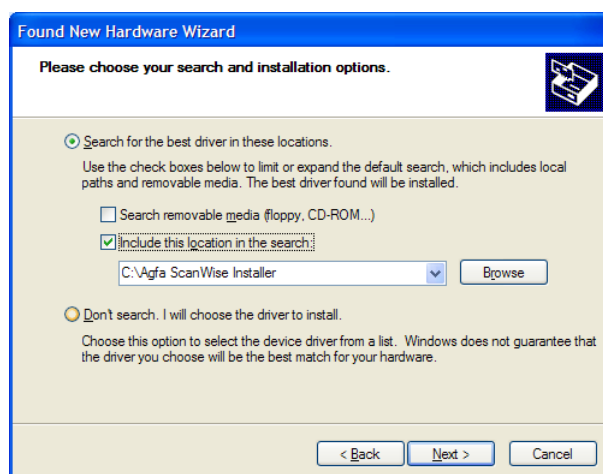
# 1. Installing USB driver on your PC (WIN. XP)

## 1.1. Standard USB communication setup

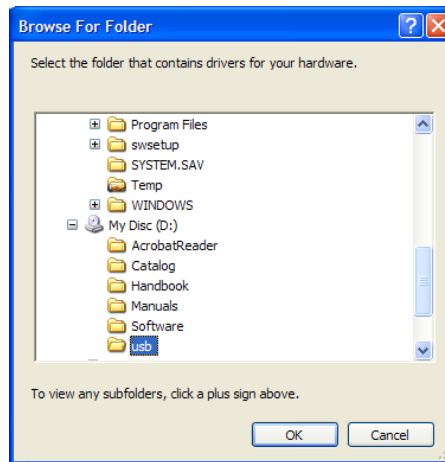
1. Turn on the BENNING IT 120, set communication mode to USB (consult BENNING IT 120 User manual) and connect BENNING IT 120 and PC with USB cable.
2. Next screen will show on your desktop.



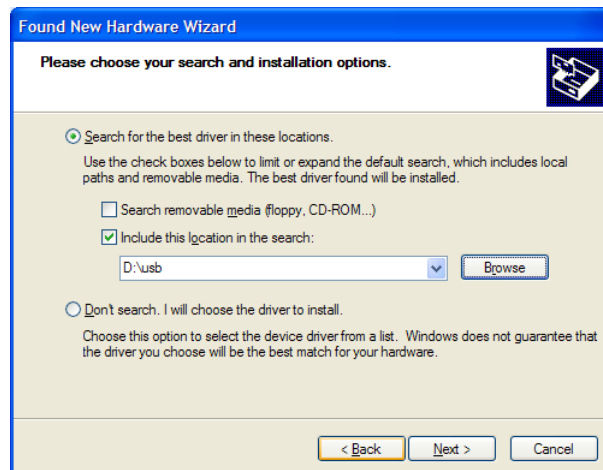
3. Make sure that the **Install from a list or specific location (Advanced)** is selected and click **Next**.



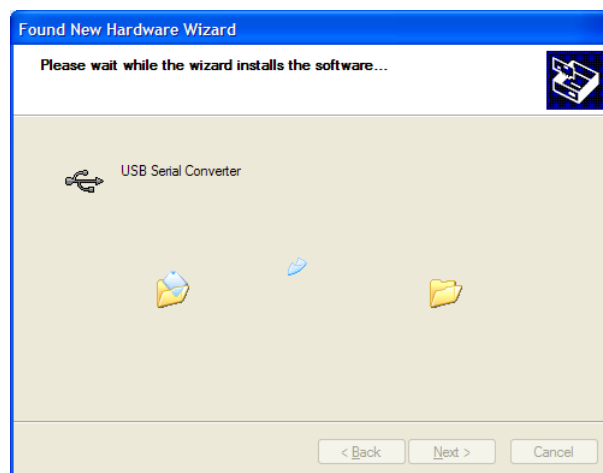
4. Make sure that the **Search for the best driver in these locations** is selected and **Include this location in the search** is checked. Click **Browse**.



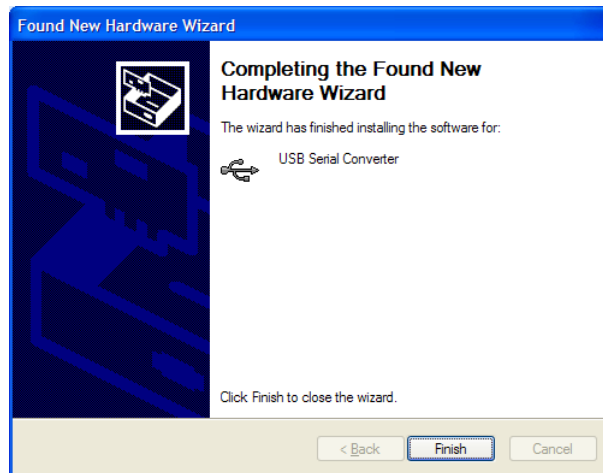
5. Select USB map on your CD (BENNING IT 120 software CD must be inserted in your CD drive). Click **OK**.



6. When you find USB map on the CD click **Next**.



7. Hardware wizard found correct driver file.

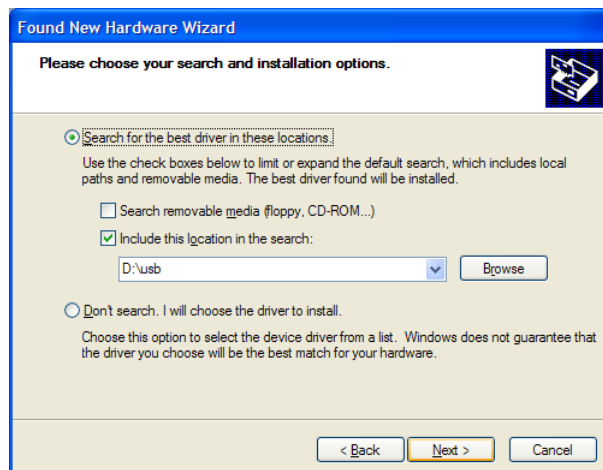


8. USB Serial Converter was installed successfully. Click **Finish**.

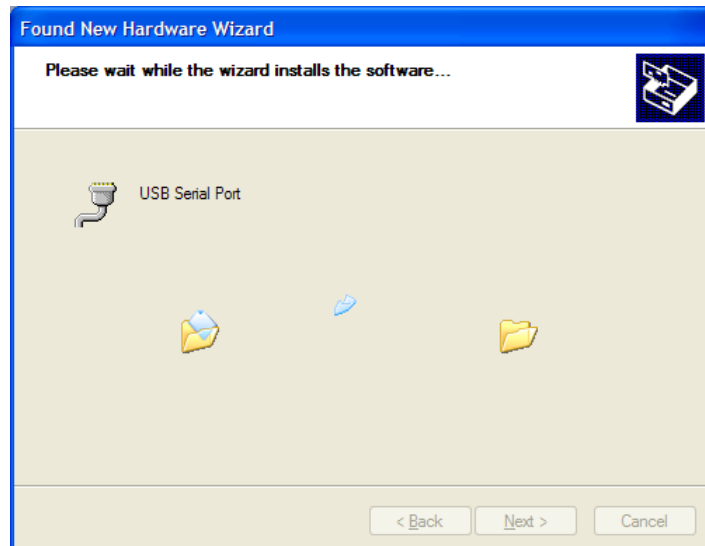
9. The next screen is shown on your desktop again.



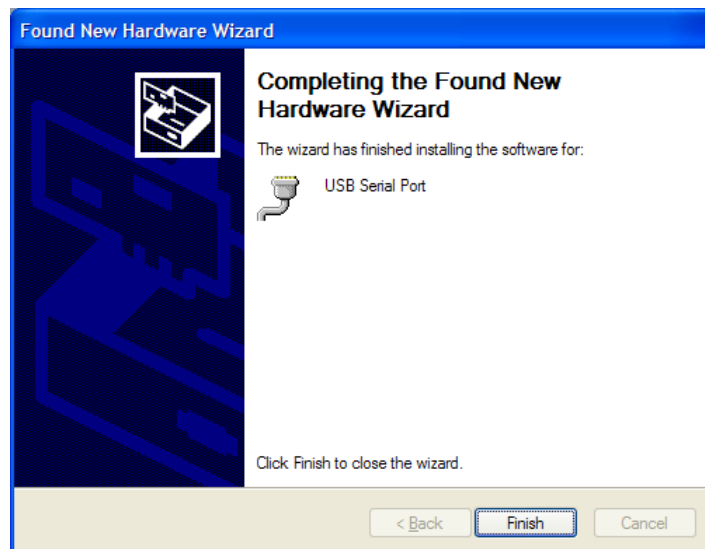
10. Make sure that the **Install from a list or specific location (Advanced)** is selected and click **Next**.



11. Make sure that the **Search for the best driver in these locations** is selected and **Include this location in the search** is checked. If the target map is not the same as the first time complete the same procedure as in the first driver installation. Click **Browse** and select USB map on your CD (BENNING IT 120 software CD must be inserted in your CD drive).



12. Hardware wizard found correct driver file.



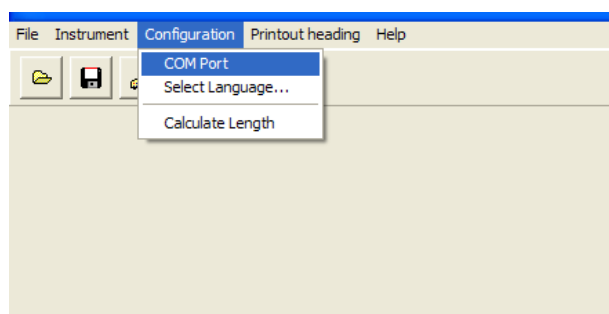
13. USB Serial Port was installed successfully. Click **Finish**.

## 1.2. Installing PC software

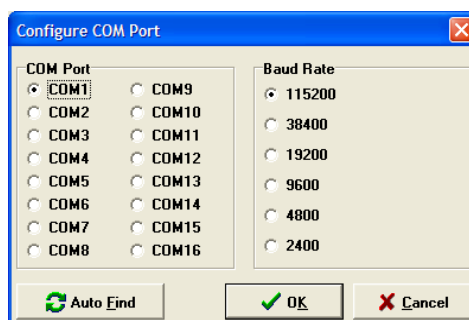
1. Run installation from BENNING IT 120 PC software CD. Follow the installation steps.

## 1.3. Configuring an USB connection between BENNING IT 120 and PC

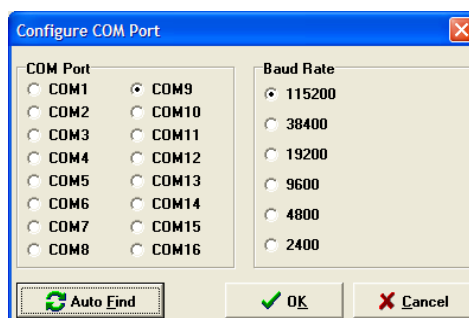
1. Turn on the BENNING IT 120, set communication mode to USB (consult BENNING IT 120 User manual) and connect BENNING IT 120 and PC with USB cable.
2. Run PC software for the BENNING IT 120.



3. Select **COM Port** from **Configuration** pull-down menu.

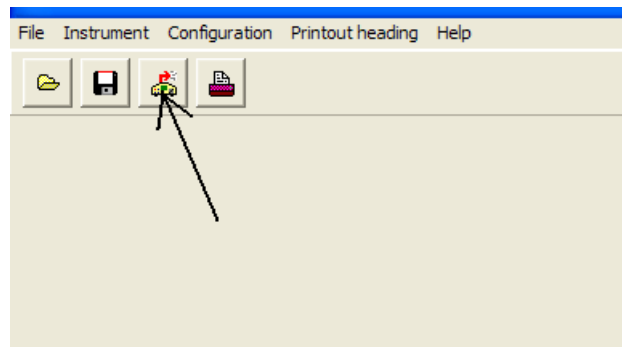


4. Click **Auto Find** button and wait.

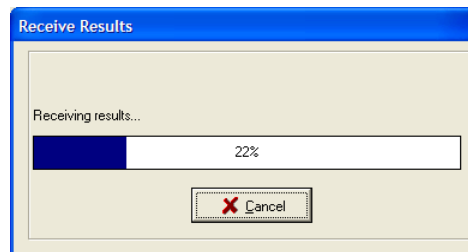


5. Click **OK** if search is successful. See chapter **Debugging communication** if

search is not successful.



6. You can start communication with the BENNING IT 120 by clicking download button in PC software now.

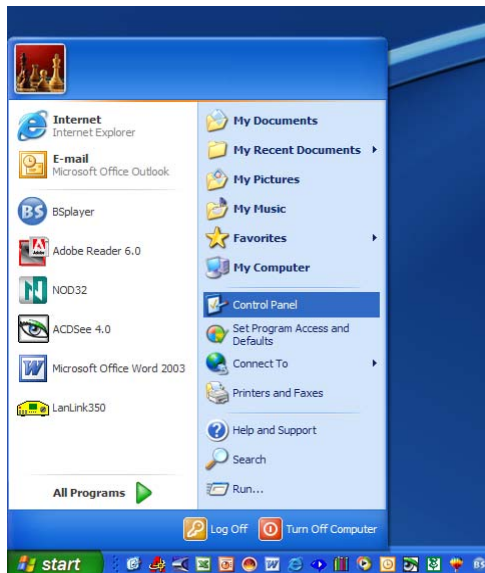


7. PC is receiving results from the BENNING IT 120.

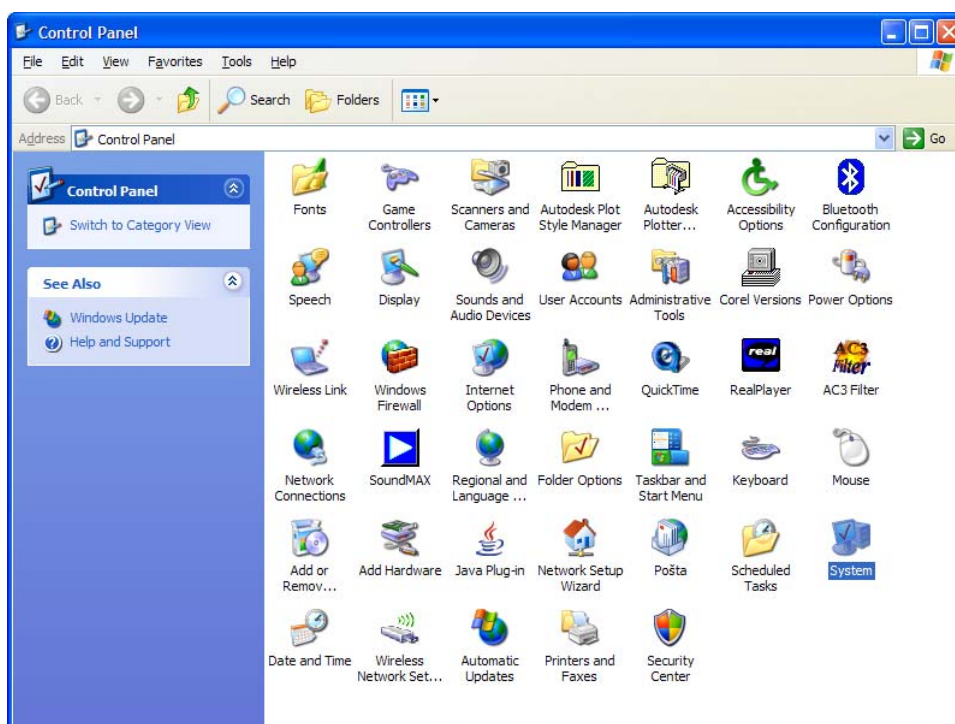


## 2. Debugging communication (WINDOWS XP)

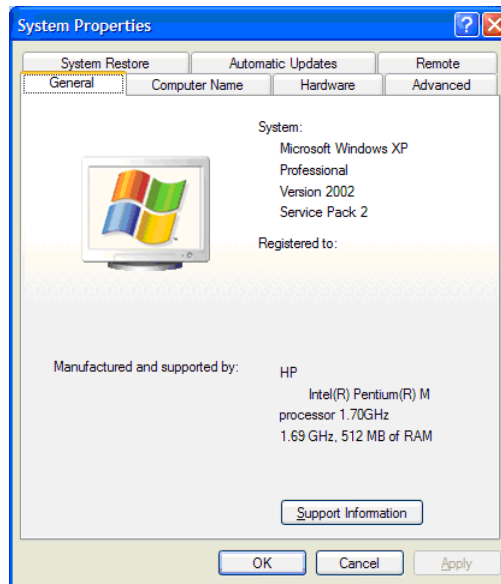
1. If communication still doesn't work follow the next procedure.



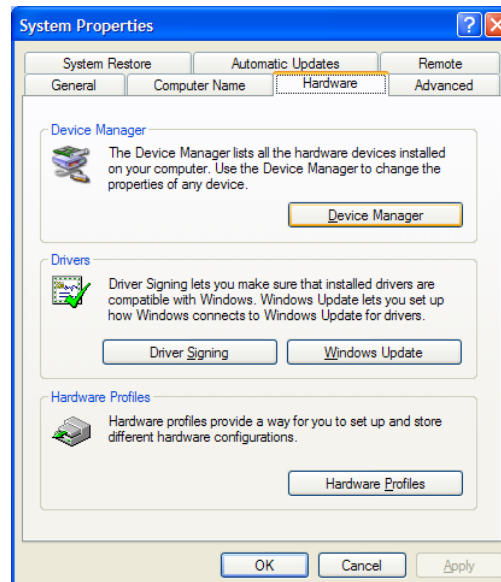
2. Check driver installation by opening **Control Panel**.



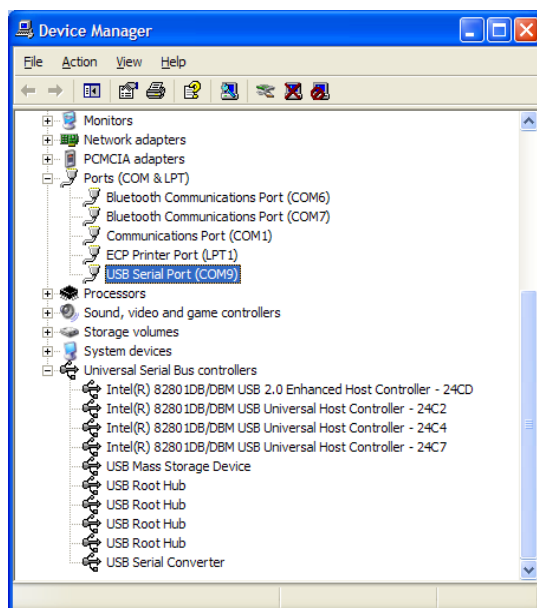
3. Double click **System** icon.



4. Select **Hardware** tab.

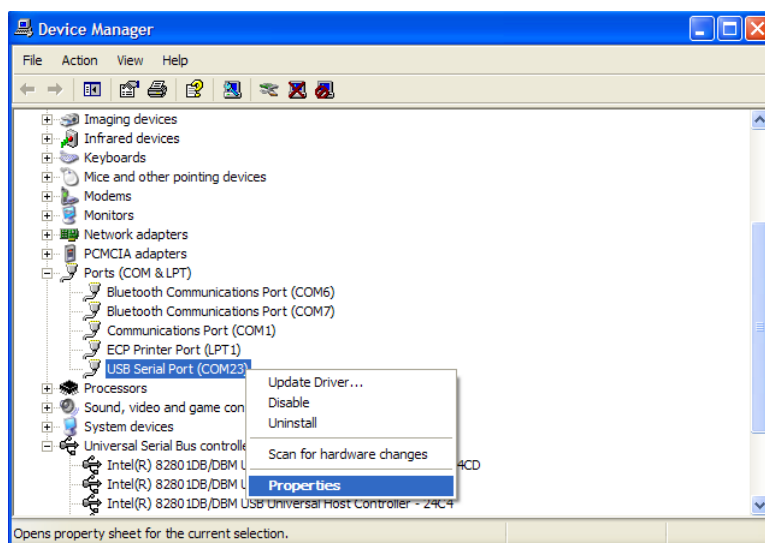


5. Open **Device Manager**.

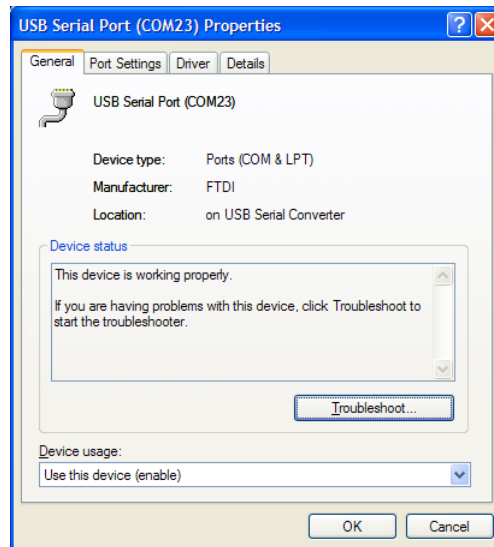


6. BENNING IT 120 must be turned on, set to USB communication and connected to a PC with USB cable.

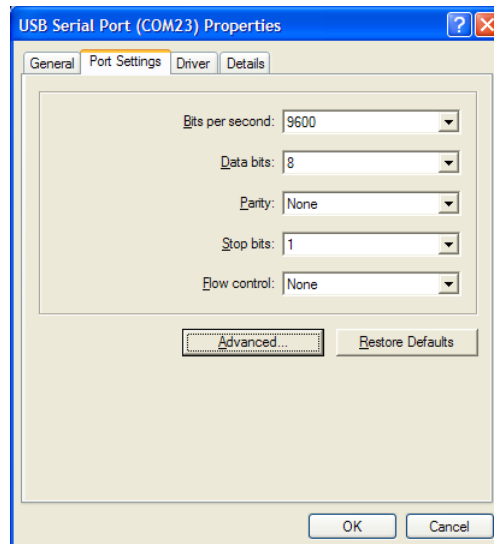
**Important:** The **Ports (COM & LPT)** section must show installed **USB Serial Port (COMX)**. **X** must be number between **1** and **16** (COM1 and COM6 in some versions). If it is, continue with chapter 13. You have to change COM port manually if number is higher than 16 (COM1 and COM6 in some versions).



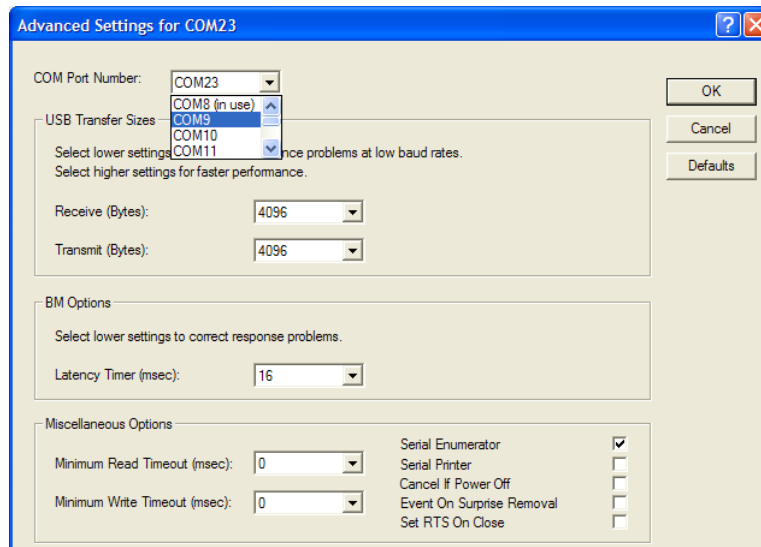
7. Right-click **USB Serial Port** and select **Properties** from the drop-down menu.



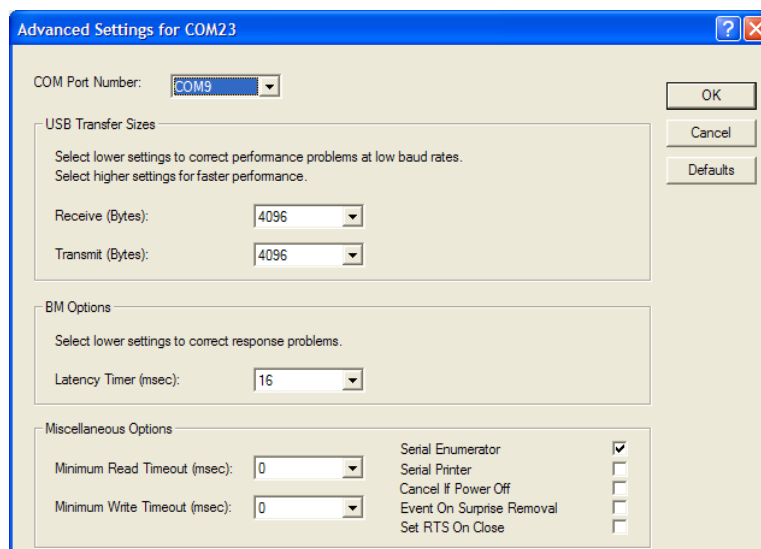
8. Open **Port Setting** tab.



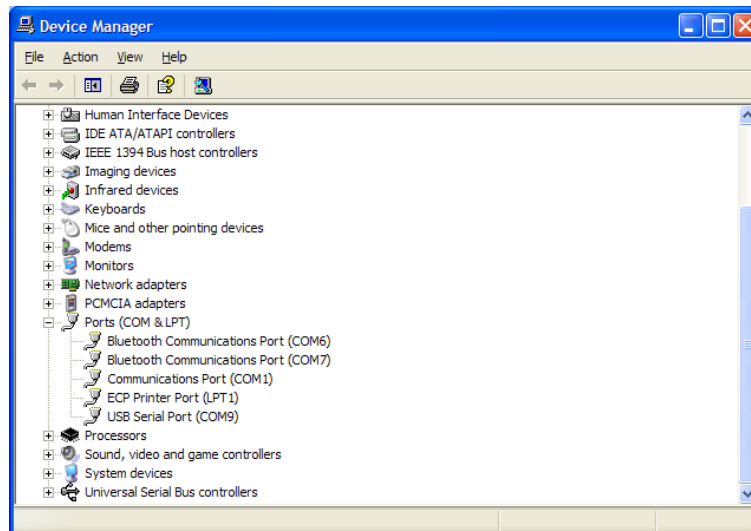
9. Click **Advanced** button.



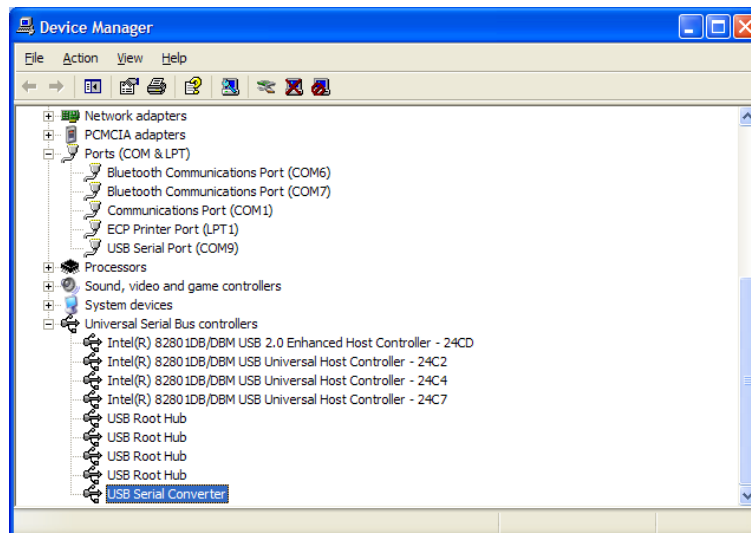
10. Chose unused port between **COM1** and **COM16** (COM1 and COM6 in some versions).



11. Confirm selection with **OK** button.



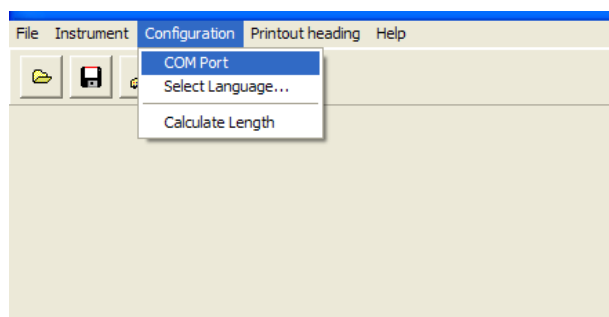
12. Refresh **Device Manager** Window.



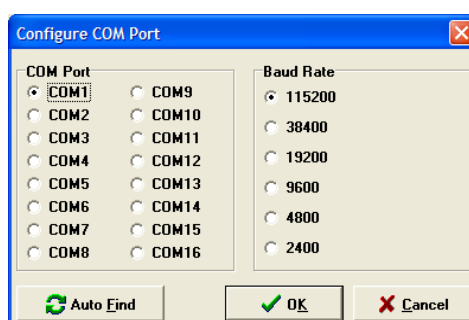
13. **USB Serial Converter** must also be installed in **Universal Serial Bus Controllers** section.

Now set PC software COM port to the same number as set in **Device Manager / Ports (COM & LPT) / USB Serial Port** driver.

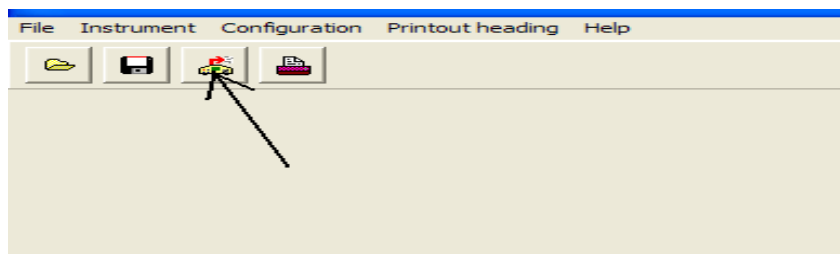
Run PC software for the BENNING IT 120.



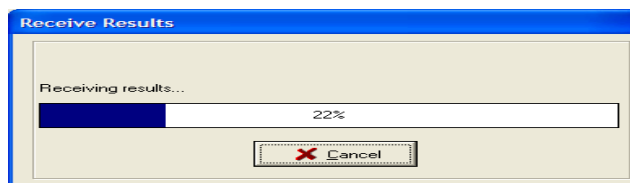
14. Select **COM Port** from **Configuration** pull-down menu.



15. Select correct **COM Port** (the same as USB Serial Port in device manager window) and **Baud Rate 115200**. Click **OK**.



16. You can start communication with the BENNING IT 120 by clicking download button in PC software now. BENNING IT 120 must be turned on, set to USB communication mode and connected to a PC with USB cable.

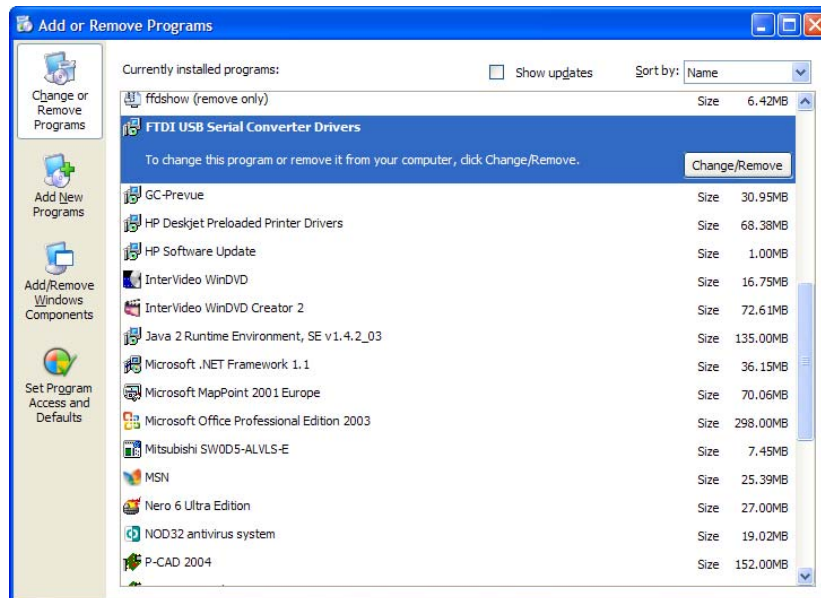


17. PC is receiving results from the BENNING IT 120.

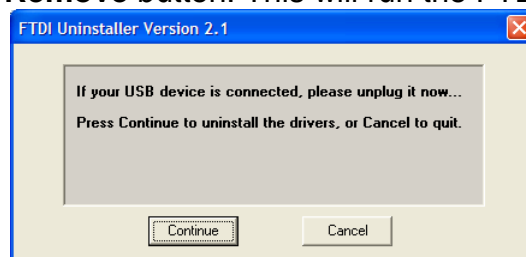
### 3. Uninstalling USB Drivers (WINDOWS XP)

To uninstall USB drivers for BENNING IT 120 follow the instructions below:

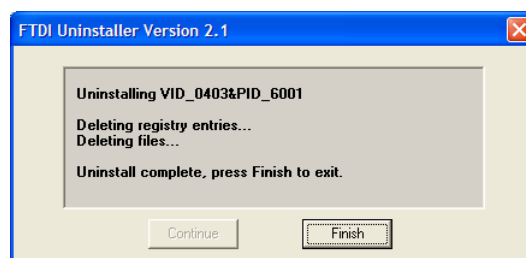
1. If the BENNING IT 120 is attached to the PC with USB cable disconnect it.
2. Open the **Add/Remove Programs** utility located in **Control Panel**.



3. Select **FTDI USB Serial Converter Drivers** from the list of installed programs.
4. Click the **Change/Remove** button. This will run the FTDI uninstaller program.



5. Click **Continue** to run the uninstaller.



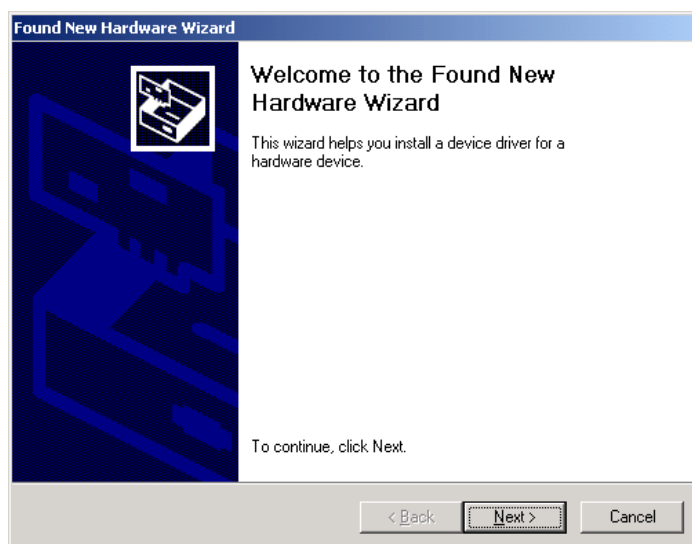
6. When the uninstaller has finished removing the device from the system click **Finish** to complete the process. USB driver for the BENNING IT 120 is removed.



## 4. Installing USB driver on your PC (WIN. 2000)

### 4.1. Standard USB communication setup

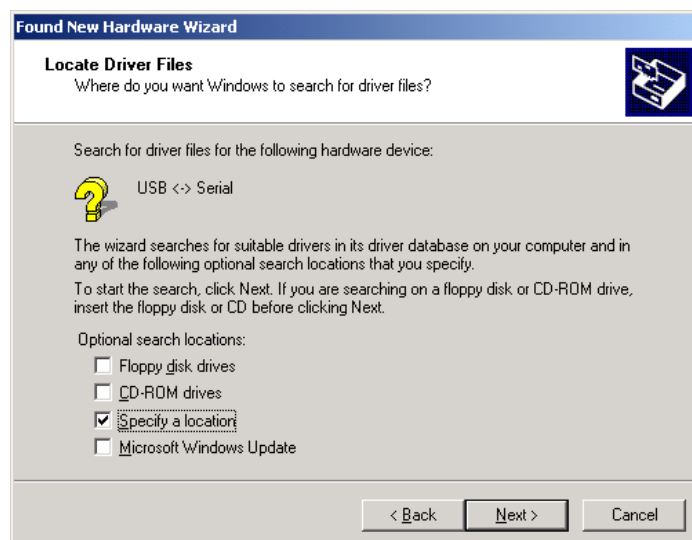
1. Turn on the BENNING IT 120, set communication mode to USB (consult BENNING IT 120 User manual) and connect BENNING IT 120 and PC with USB cable.
2. Next two screens will show on your desktop.



3. Click **Next**.



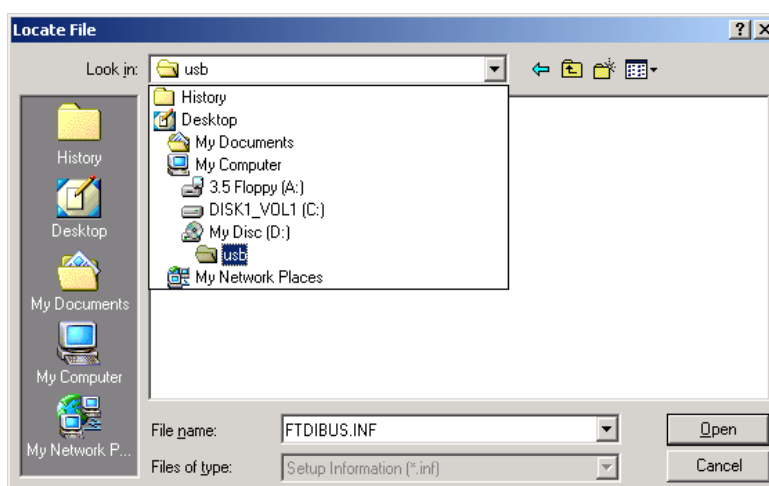
4. Make sure that the **Search for a suitable driver for my device (recommended)** is selected and click **Next**.

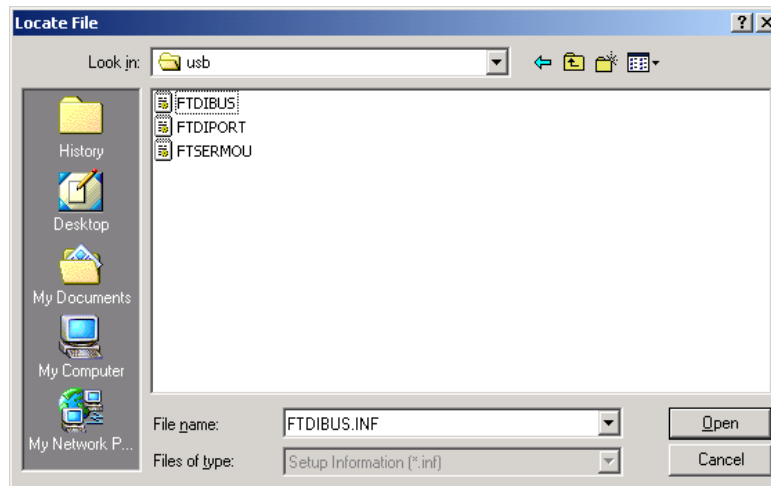


5. Make sure that the **Specify a location** is checked and click **Next**.



6. Click **Browse** and select USB map on your CD (BENNING IT 120 software CD must be inserted in your CD drive).

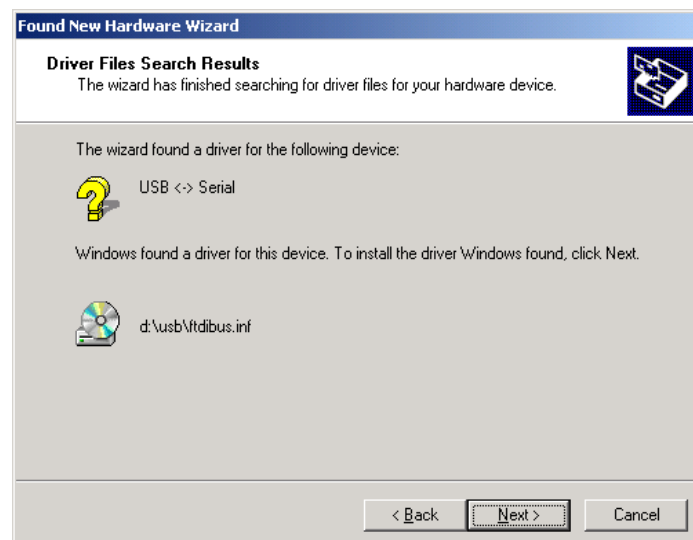




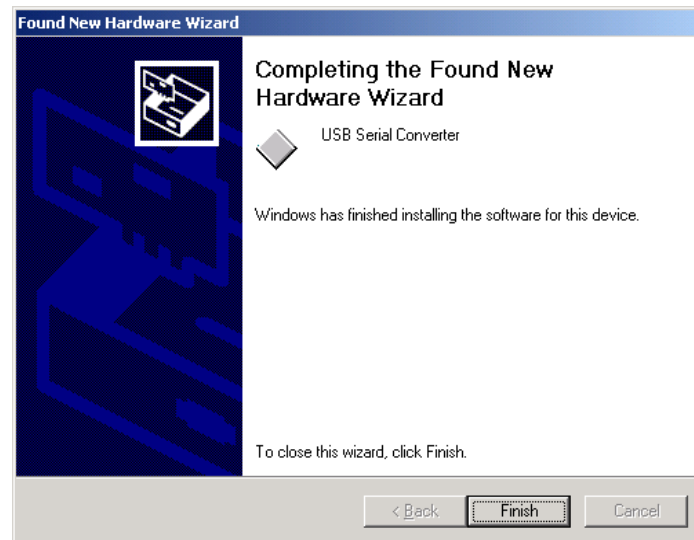
7. When you find USB map on the CD click **Open**.



8. The driver source location is selected. Click **OK**.

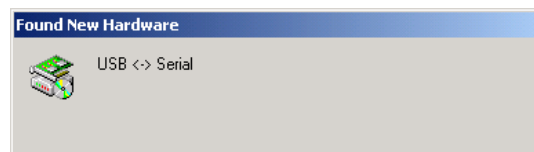


9. Hardware wizard found correct driver file. Click **Next**.



10. USB Serial Converter was installed successfully. Click **Finish**.

11. The next two screens are shown on your desktop again.



12. Click **Next**.



13. Make sure that the **Search for a suitable driver for my device (recommended)** is selected and click **Next**.

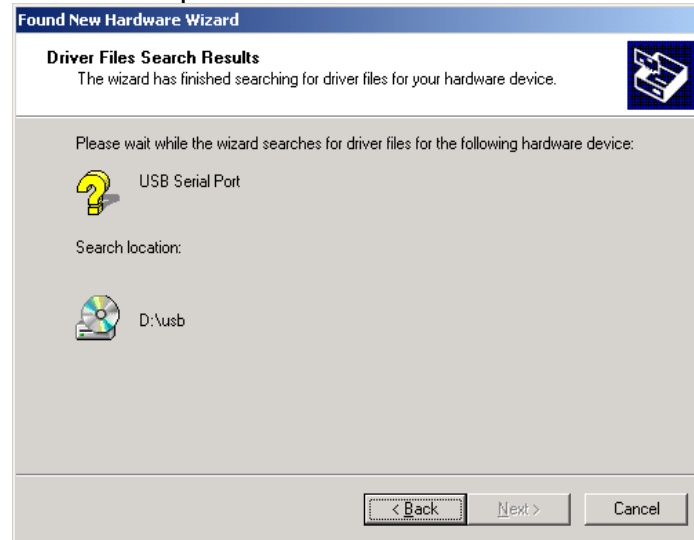


14. Make sure that the **Specify a location** is checked and click **Next**.



15. Click **Browse** and select USB map on your CD (BENNING IT 120 software CD must be inserted in your CD drive). If the target map is not the same as the first

time complete the same procedure as in the first driver installation.



16. Hardware wizard found correct driver file. Click **Next**.



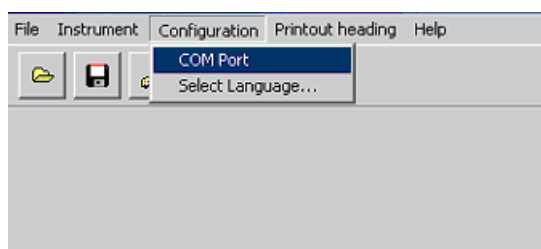
17. USB Serial Port was installed successfully. Click **Finish**.

## 4.2. Installing PC software

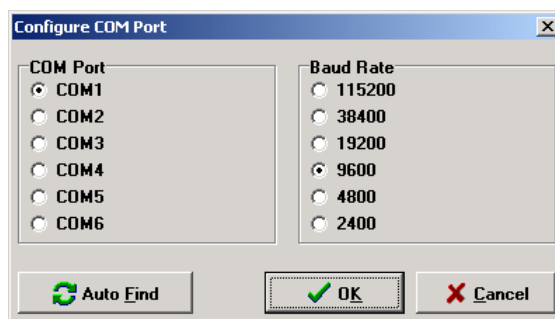
1. Run installation from BENNING IT 120 PC software CD. Follow the installation steps.

## 4.3. Configuring an USB connection between BENNING IT 120 and PC

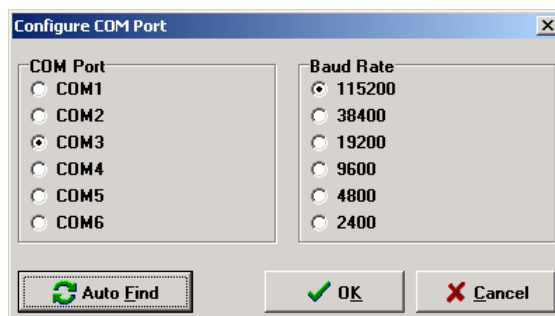
1. Turn on the BENNING IT 120, set communication mode to USB (consult BENNING IT 120 User manual) and connect BENNING IT 120 and PC with USB cable.
2. Run PC software for the BENNING IT 120.



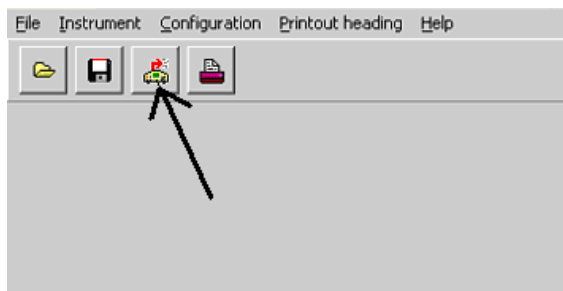
3. Select **COM Port** from **Configuration** pull-down menu.



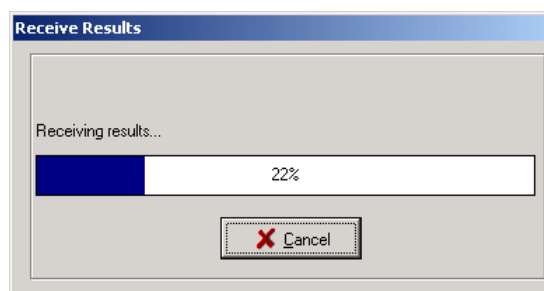
4. Click **Auto Find** button and wait.



5. Click **OK** if search is successful. See chapter **Debugging communication** if search is not successful.



6. You can start communication with the BENNING IT 120 by clicking download button in PC software now.

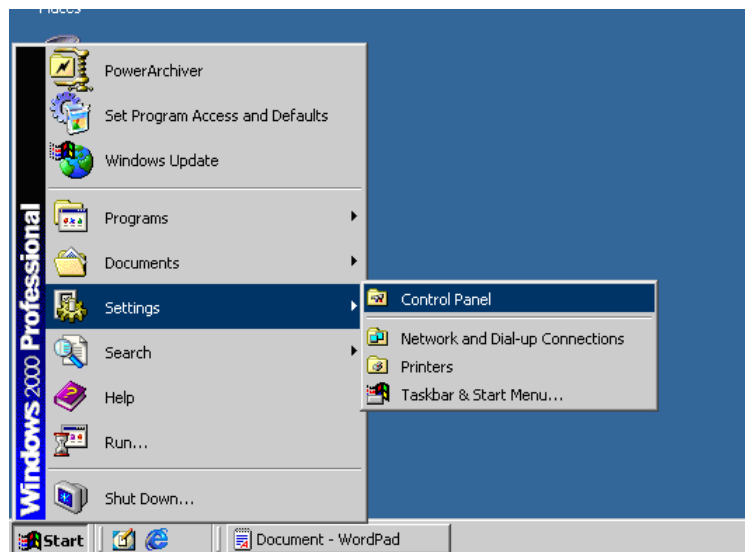


7. PC is receiving results from the BENNING IT 120.

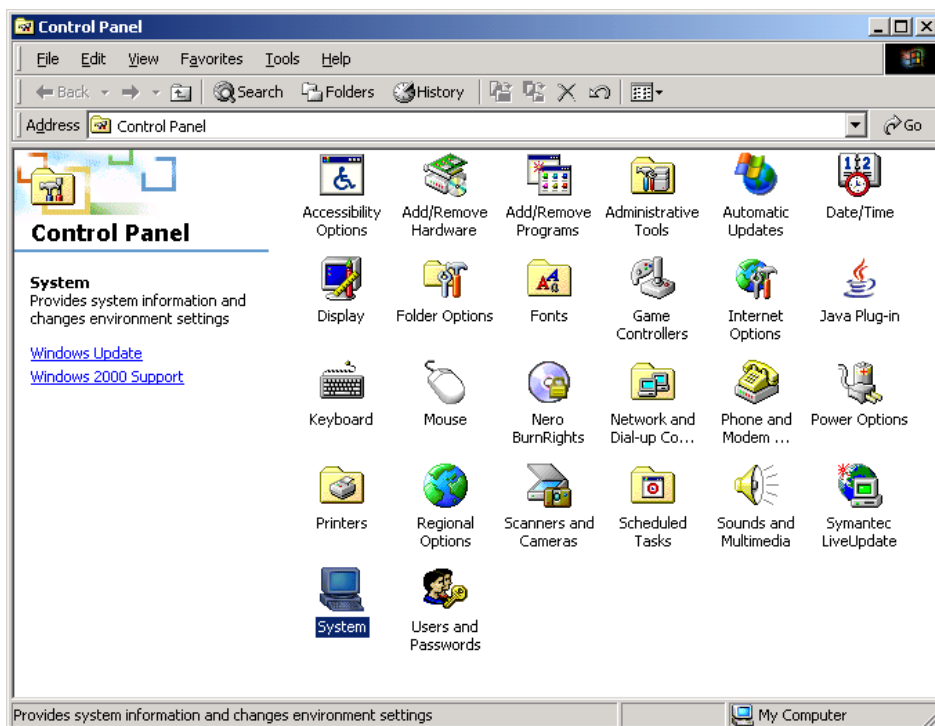


## 5. Debugging communication (WINDOWS 2000)

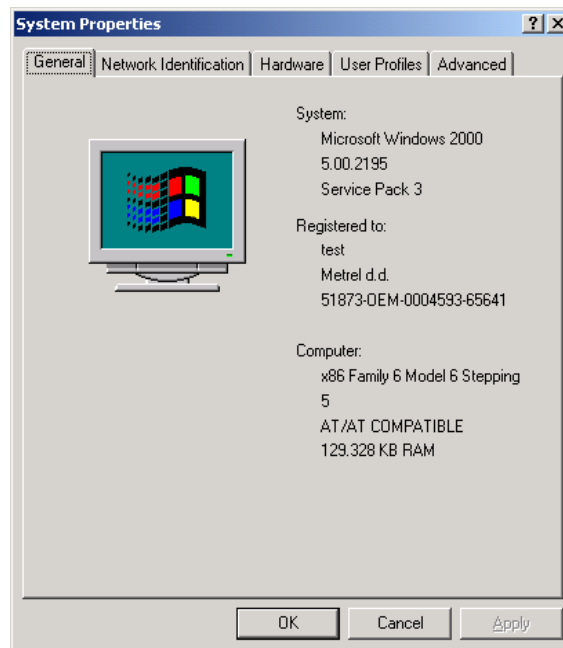
1. If communication still doesn't work follow the next procedure.



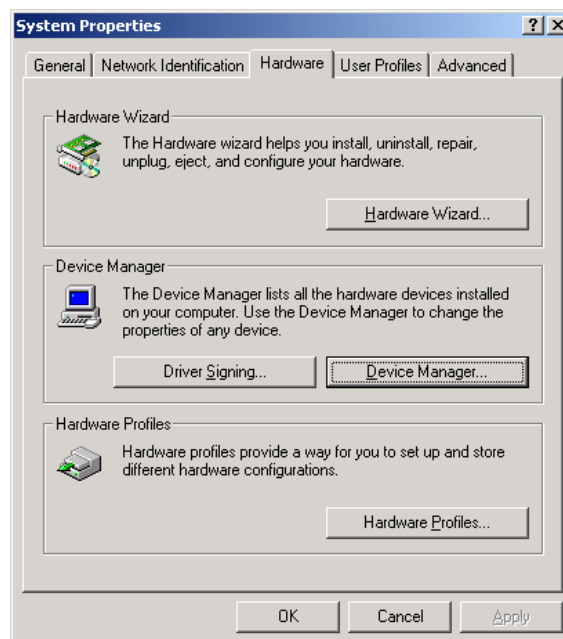
2. Check driver installation by opening **Control Panel**.



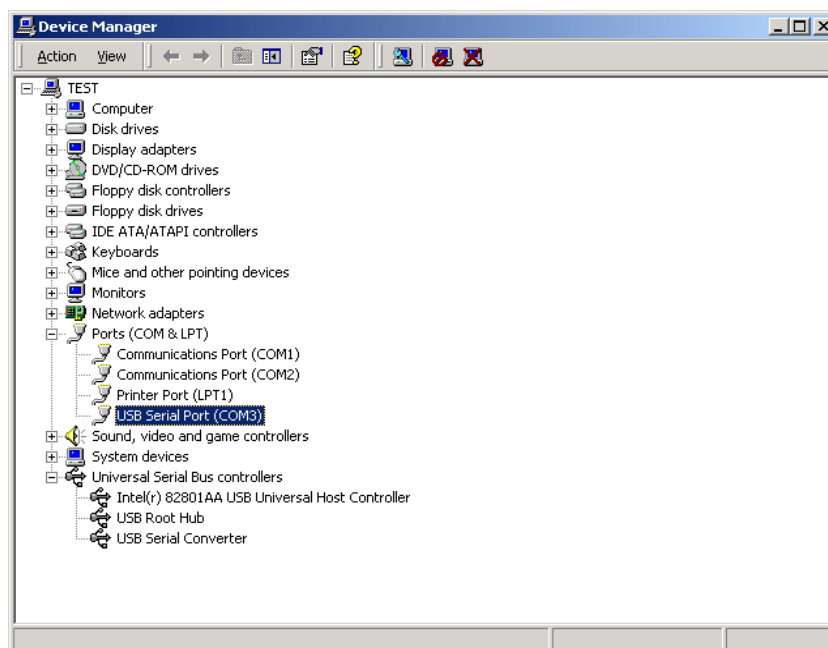
3. Double click **System** icon.



4. Select **Hardware** tab.

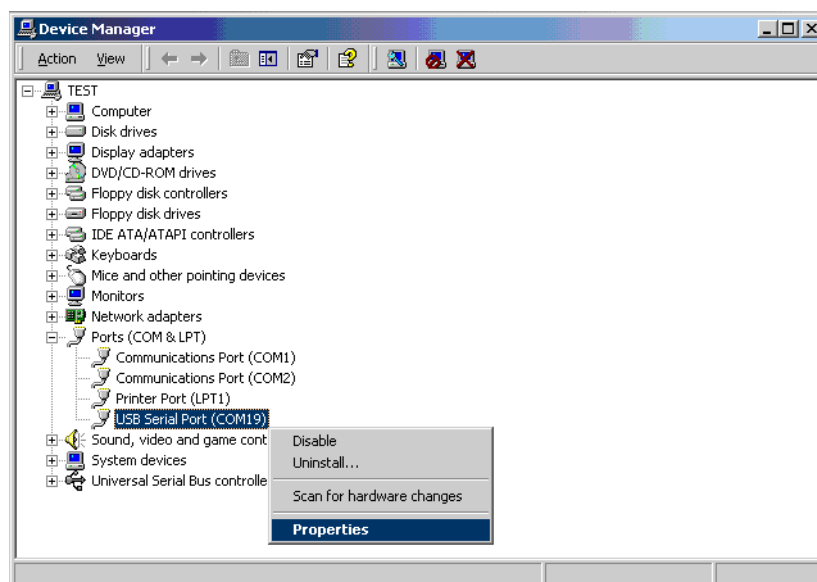


5. Open **Device Manager**.

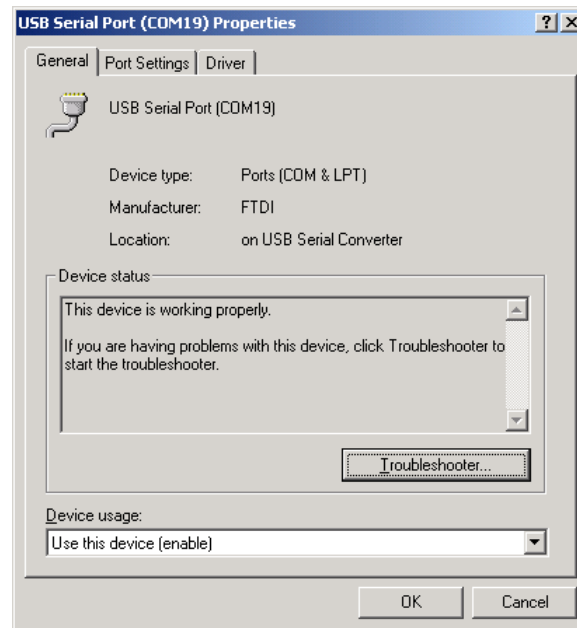


6. BENNING IT 120 must be turned on, set to USB communication and connected to a PC with USB cable.

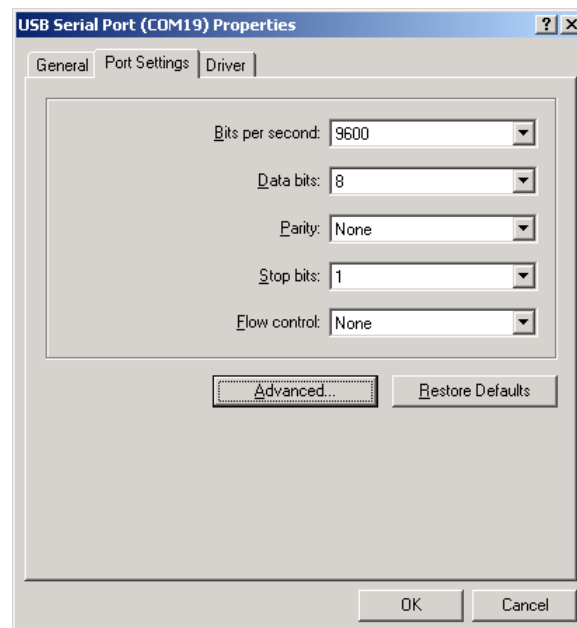
**Important:** The **Ports (COM & LPT)** section must show installed **USB Serial Port (COMX)**. **X** must be number between **1** and **16** (COM1 and COM6 in some versions). If it is, continue with chapter 13. You have to change COM port manually if number is higher than 16 (COM1 and COM6 in some versions).



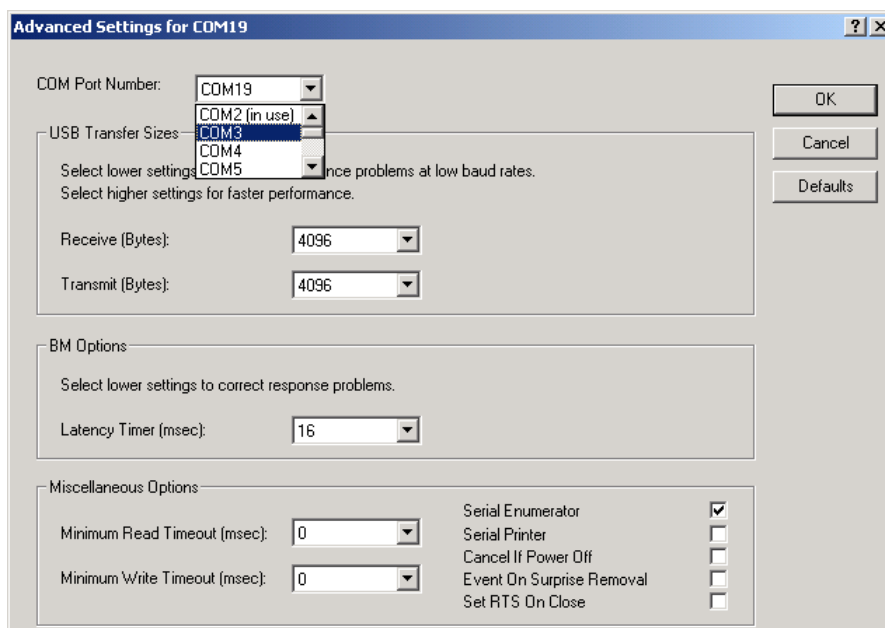
7. Right-click **USB Serial Port** and select **Properties** from the drop-down menu.



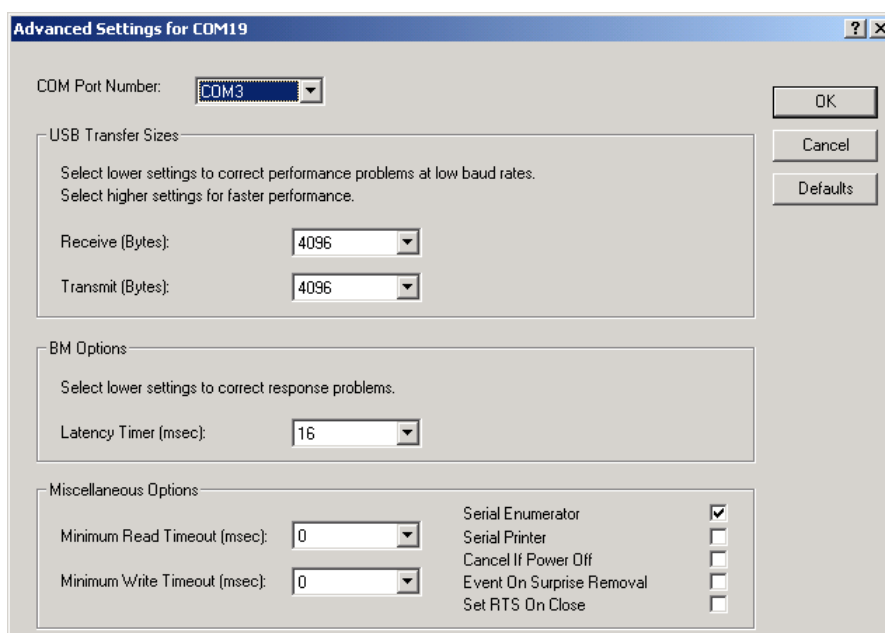
8. Open **Port Setting** tab.



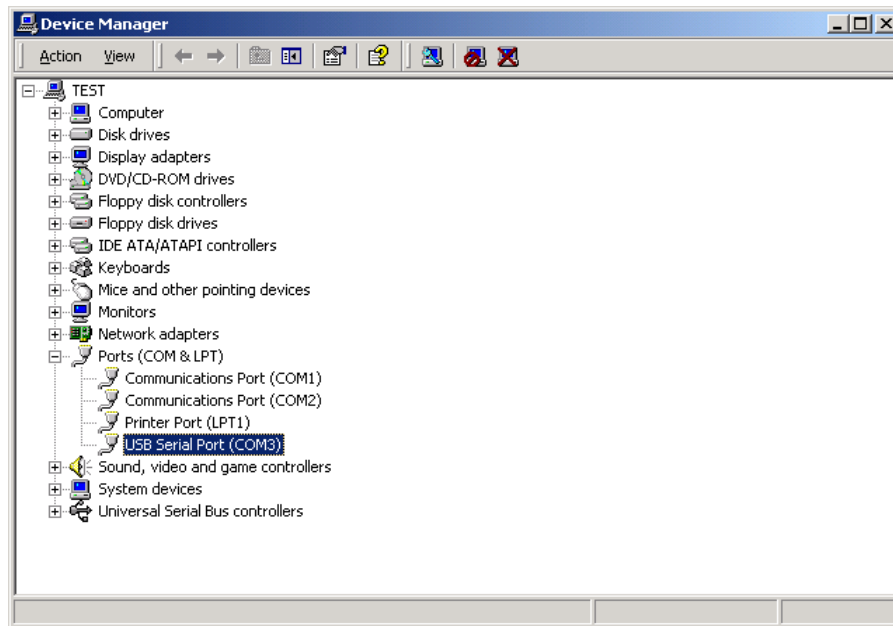
9. Click **Advanced** button.



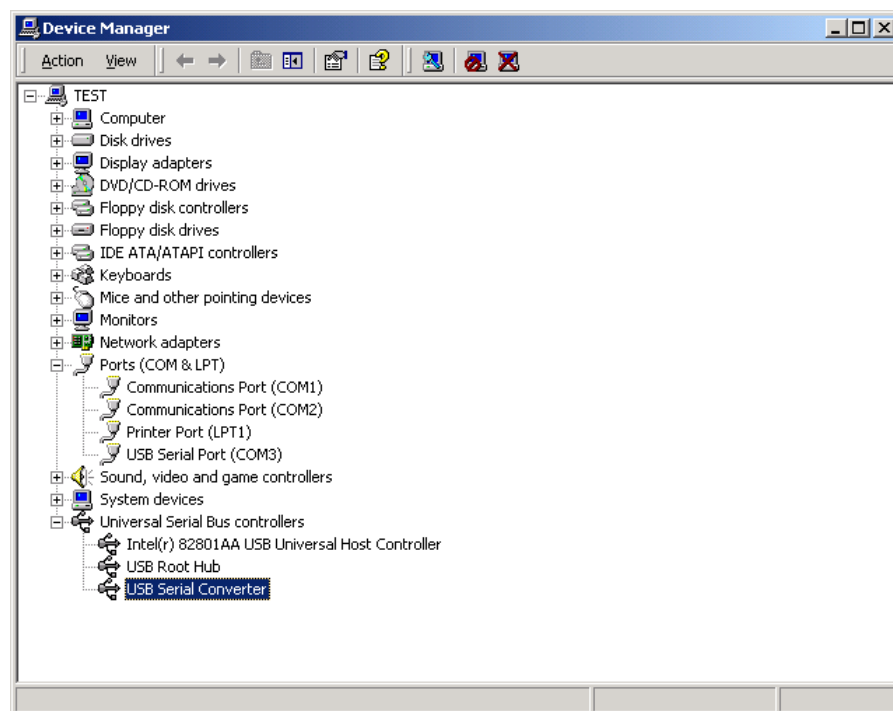
10. Chose unused port between **COM1** and **COM16** (COM1 and COM6 in some versions).



11. Confirm selection with **OK** button.



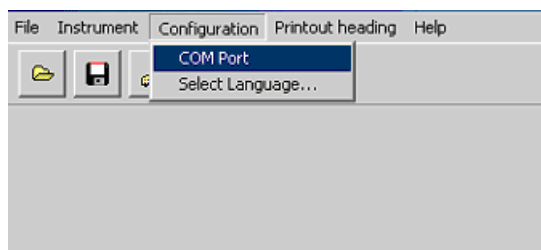
12. Refresh **Device Manager** Window.



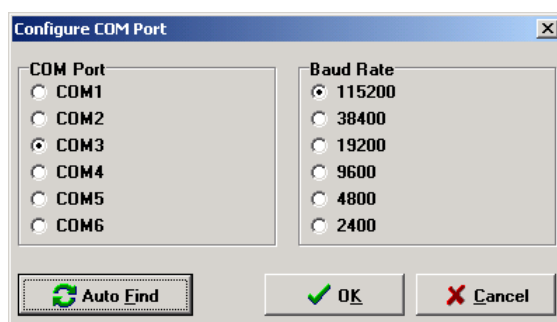
13. **USB Serial Converter** must also be installed in **Universal Serial Bus Controllers** section.

Now set PC software COM port to the same number as set in **Device Manager / Ports (COM & LPT) / USB Serial Port** driver.

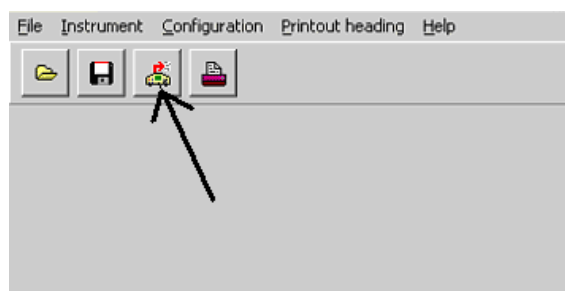
14. Run PC software for BENNING IT 120.



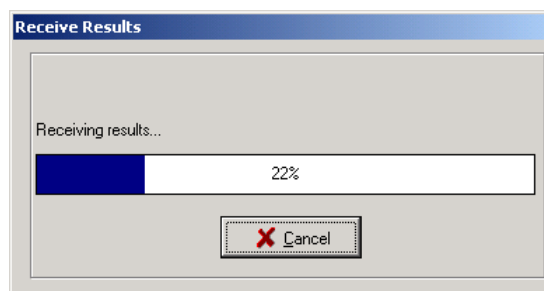
15. Select **COM Port** from **Configuration** pull-down menu.



16. Select correct **COM Port** (the same as USB Serial Port in device manager window) and **Baud Rate 115200**. Click **OK**.



17. You can start communication with the BENNING IT 120 by clicking download button in PC software now. BENNING IT 120 must be turned on, set to USB communication mode and connected to a PC with USB cable.

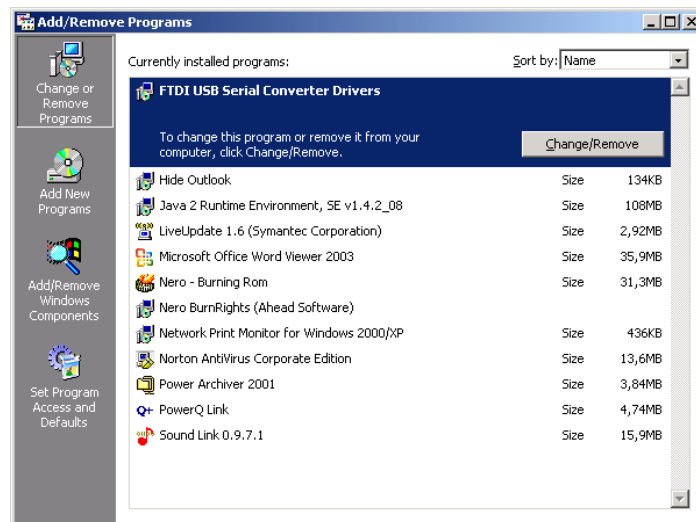


18. PC is receiving results from the BENNING IT 120.

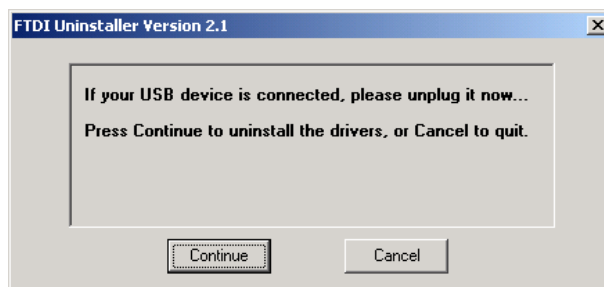
## 6. Uninstalling USB Drivers (WINDOWS 2000)

To uninstall USB drivers for BENNING IT 120 follow the instructions below:

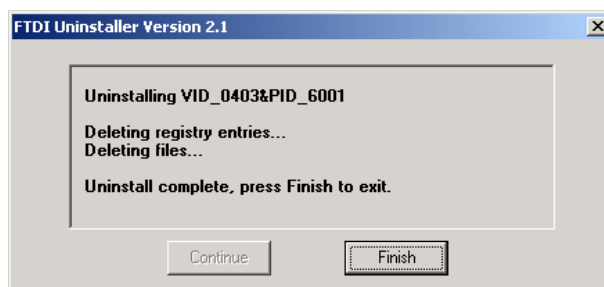
1. If the BENNING IT 120 is attached to the PC with USB cable disconnect it.
2. Open the **Add/Remove Programs** utility located in **Control Panel**.



3. Select **FTDI USB Serial Converter Drivers** from the list of installed programs.
4. Click the **Change/Remove** button. This will run the FTDI uninstaller program.



5. Click **Continue** to run the uninstaller.



6. When the uninstaller has finished removing the device from the system click **Finish** to complete the process. USB driver for the BENNING IT 120 is removed.