

**HTC-15A28D(DN)**

**HTC-15E28D(DN)**

## 3-Axis COLOR DOME

The DSP 3-Axis Color DOMED camera HTC-15A28D(DN) & HTC-15E28D(DN) incorporate advanced 1/3" high performing CCD Sensor and digital signal processor (DSP) circuit.

HTC-15A28D(DN) (NTSC): 1/3" CCD sensor 250,000 pixels

HTC-15A28D(DN) (PAL) : 1/3" CCD sensor 291,000 pixels

HTC-15E28D(DN) (NTSC): 1/3" CCD sensor 380,000 pixels

HTC-15E28D(DN) (PAL) : 1/3" CCD sensor 440,000 pixels

### **GAIN CONTROL(GC)- ON/OFF Switch**

The adoption of an AUTOMATIC GAIN CONTROL (AGC) provides clear image in low light condition.

### **ELECTRONIC SHUTTER(ES)- ON/OFF Switch**

The 3-Axis Color DOMED Camera HTC-15A28D(DN) & HTC-15E28D(DN) incorporate the Electronic Shutter up to 1/100,000.

### **BACK LIGHT COMPENSATION (BLC)—ON/OFF Switch**

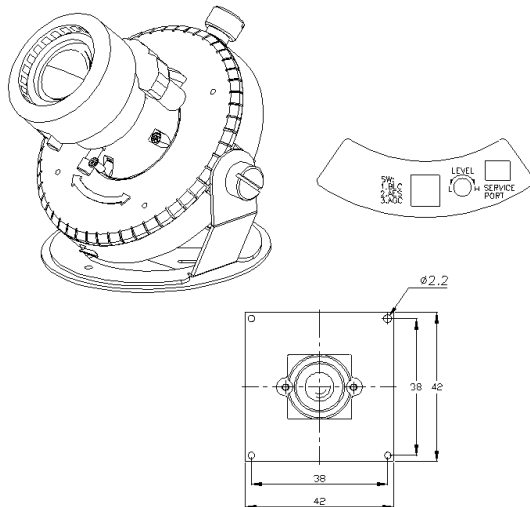
As you take a picture with strong light behind the subject, the picture would be looked very dim on the subject.

In this case, you should select BLC ON, the AES should be in ON position.

NOTE: When you select BLC ON, the AES should be in ON position.

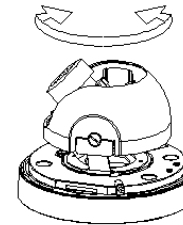
### **LENS**

The 3-Axis Color DOMED Camera HTC-15A28D(DN) & HTC-15E28D(DN) include a 2.8~11mm Vari-focal lens applications.

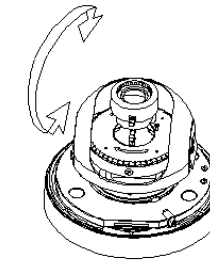


### 3-AXIS ADJUSTMENTS

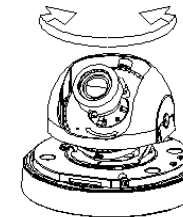
The 3-Axis camera maximum rotation and placement angel diagrams are shown in the following.



① Horizontal Rotation: 180°



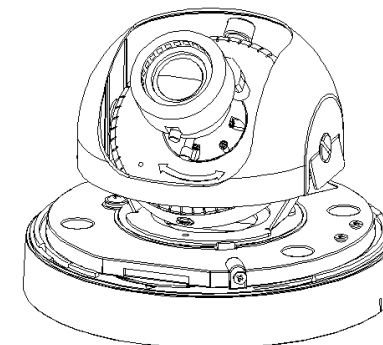
② Tilt: 75°



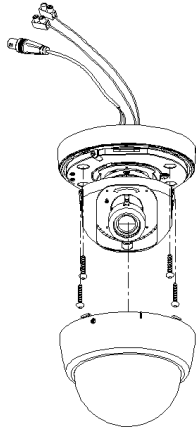
③ Pan: 175°

### INSTALLATION PROCEDURE

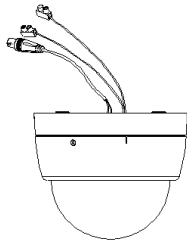
Camera will be installed as below when Ex-factory



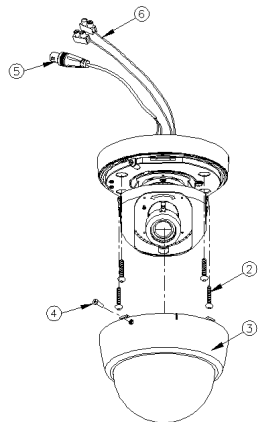
**STEP 1:** Use screw driver to tight up 4 attached 1/32" x1" screws first, then refit the dome cover.



**STEP2:** Complete installation



**OVERVIEW**



**INDICATION PARTS**

1. 3-Axis Dome camera
2. 1/32" x1" screws x4
3. Plastic dome cover
4. M2.6\*10mm flat screw
5. BNC cable
6. Dual Power cable

**SPECIFICATOINS**

ITEM NO.	HTC-15A28D(DN)		HTC-15E28D(DN)	
PICK UP DEVICE	1/3" CCD Image Sensor			
SYSTEM	NTSC	PAL	NTSC	PAL
PICTURE ELEMENTS H* V	510*492	500*582	768*494	752*582
H. SYNC. FREQUENCY	15.734 KHz	15.625 KHz	15.734 KHz	15.625 KHz
V. SYNC. FREQUENCY	59.94Hz	50Hz	59.94Hz	50Hz
HORIZONTAL RESOLUTION	400 TV Line		580TV Line	
SCANNING SYSTEM	2 : 1 Interlace			
SENSITIVITY	1 Lux		0.05 Lux	
SYNCHRONIZATION	Internal			
S/N RATIO	MORE THAN 48 dB (AGC OFF)			
BACK LIGHT COMPENSATION	ON/OFF Switch			
ELECTRONIC SHUTTER	ON/OFF Switch; Range 1/50 (1/60)Up to 1/100,000			
GAIN CONTROL	ON/OFF Switch			
GAMMA	0.45			
LENS	2.8~11 mm Vari-focal Lens at F2.0			
DAY/NIGHT ON	>5 Lux Color: <3 Lux B/W (For DN Module)			
VIDEO OUTPUT	1 Vpp, 75 Ohms			
POWER SUPPLY	DC12V/ AC 24V Dual Power			
POWER CONSUMPTION	HTC-15A28D(DN): DC 12V 175mA / AC 24V 2.15W			
	HTC-15E28D(DN): DC 12V 190 mA / AC 24V 2.30 W			
WEIGHT	gr	700		
DIMENSIONS (Ø*H)	Ø132* 108mm			
STORAGE TEMPERATURE	-30 to + 60 °C			
OPERATON TEMPERATURE	-10 to + 45 °C			

\*SPECIFICATIONS ARE SUBJECT TO CHANGE WITHOUT NOTICE.