

The screenshot displays the Disc Manager 5 Professional (version 5.1.11) interface. The main window is titled "Job Scheduler" and contains a table of jobs. Below the table is a "Status zařízení" (Device Status) section with progress bars for various recording heads and the printer. The interface also shows a "Disc Manager NET Client" window and a "DiscXpress" window in the background.

Číslo	Název úlohy	Atributy	Kopii	Hotovo	Vadných
0001	ODP200_labelCD_pic	P	13	13 (100 %)	0
0002	cd_odp	R V	13	13 (100 %)	0
0004	ODP200_labelCD_pic	P	1	1 (100 %)	0
0006	cd_odp	R V	1	1 (100 %)	0
0007	ODP200_UserManual_eng_zapis	R	12	0 (0 %)	0

Status zařízení

Automat: Nečinnost

Rekordér 1: Vypalování 0007 64 %

Rekordér 2: Vypalování 0007 100 %

Rekordér 3: Vypalování 0007 100 %

Rekordér 4: Vypalování 0007 52 %

Rekordér 5: Nečinnost 0 %

Rekordér 6: Nečinnost 0 %

Rekordér 7: Nečinnost 0 %

Rekordér 8: Nečinnost 0 %

Tiskárna: Nečinnost 0 %

Vadných disků: 0 Celkem vadných: 134
Dobých disků: 51 Celkem dobrých: 16507

Disc Manager

Software for handling of duplicators

User Manual



Content

- Content 1
- 1 Installation 2
 - 1.1 Starting 2
 - 1.2 Removing Disc Manager 2
 - 1.3 Minimal System Requirements 2
- 2 Software License Agreement 3
 - 2.1 Copyright 3
 - 2.2 License 3
 - 2.3 Copy Restrictions 3
 - 2.4 Term 3
 - 2.5 Limited Warranty 3
 - 2.6 No Liability for Consequential Damages 4
 - 2.7 Miscellaneous 4
- 3 Menu 5
 - 3.1 Menu Structure 5
 - 3.2 Toolbar 7
- 4 Menu File 8
 - 4.1 Job Scheduler 8
 - 4.2 Job Editor 10
 - 4.3 Device Status 13
 - 4.4 Read Image 14
- 5 Create a Job 15
- 6 Control the Duplication Process 18
- 7 Configure Hardware 19
- 8 Advanced functions 20
 - 8.1 Network 20
 - 8.2 Error Reporting 20
 - 8.3 Serialization Printing 21
 - 8.4 ARC - Advanced Recording Control 22
 - 8.5 Read Discs 24
- 9 Disc Xpress 25
- Appendix 27

1 Installation

Put the Gamma Disc into your CD/DVD drive. In the directory "Software" start installation program "**setup.exe**". This installation program installs whole Disc Manager package.

1.1 Starting

To start the program choose please *Start/Programs/Disc Manager/Disc Manager*. You may also click to Disc Manager icon on the desktop. After start you have to register the Disc Manager. Type your name, company and licence key. You can also start Disc Manager as trial version, but in this demo mode the Disc Manager has some restrictions - only for 2 recorders, without printer and runs only 30 days.

Now after start you have to configure your hardware (see chapter Configure Hardware).

Important caution

It is important to be sure, that after installation the Autorun function is switched off to prevent possible start of programs from discs inserting during duplication process in the recorders.

Use register editor regedit.exe and find the key

HKEY_LOCAL_MACHINE SYSTEM/Current control set/Services/Cdrom

Check and event. change the value of Autorun to 0. For this you have to have admin rights.

Then restart the computer that the changes are accepted from operating system.

1.2 Removing Disc Manager

Uninstall program removes installed Disc Manager application and all its components from hard disc. To remove the Disc Manager software from your computer choose *Start/Programs/Disc Manager/Uninstall*

1.3 Minimal System Requirements

For 2 recorders:

- Microsoft Window 2000, NT 4.0 or XP
- Pentium 1GHz or higher
- 256MB RAM or more
- FireWire controller
- COM port
- High colour monitor (min. 1024x768 pixels)
- Full installation needs 50MB HD space

For 4 recorders:

- Microsoft Window 2000, NT 4.0 or XP
- Pentium 1.6GHz or higher
- 512MB RAM or more
- Raid0 disc array controller
- 2 FireWire controllers
- COM port
- High colour monitor (min. 1024x768 pixels)
- Full installation needs 50MB HD space

2 Software License Agreement

This document is a legal agreement between you and TERRA computer systems. Please read this agreement carefully before opening the sealed disc pack. By opening this sealed disc pack, you accept the term of this agreement. If you do not agree to the term of this agreement, promptly return the unopened sealed disc pack including written materials and binders or other containers to the place of purchase for a full refund.

2.1 Copyright

The software program (the "Software") is owned by TERRA computer systems

2.2 License

TERRA computer systems grants you rights to use the software on a single user computer, or a single terminal or workstation of a multi-user computer or local area network. A separate license must be obtained from TERRA computer systems for every other terminal or workstation on a multi-user computer or local area network.

2.3 Copy Restrictions

This software and the accompanying written materials are copyright and property of TERRA computer systems. You may make one copy of the software for back up or archival purpose. All the other copies are strictly forbidden.

You may not de-compile, reverse engineer, copy, transfer, or otherwise use the software except as expressly stated in this agreement.

2.4 Term

This license is effective until terminated. You may terminate this license at any time by destroying all copies of the software. This license will terminate automatically, without notice from TERRA computer systems, if you fail to comply with this agreement. Upon such termination, you shall destroy all copies of the software.

2.5 Limited Warranty

TERRA computer systems warrants that the origin disc are free from defects in material and workmanship, assuming normal use, for a period of ninety (90) days from the date of purchase. If a defect occurs during this time, you may return your faulty disc to TERRA computer systems, along with a dated proof of purchase, and it will be replaced free of charge.

2.6 No Liability for Consequential Damages

In no event shall TERRA computer systems be liable for any damages, including any loss of profit, or other incidental, or consequential damages. Arising out of your use or inability to use the software or written materials, even if TERRA computer systems had have been advised exclusion or limitation of liability for limitation may not apply to you.

2.7 Miscellaneous

This agreement is governed by the laws of the Czech Republic.

If any provision of this agreement shall be unlawful, void or for any reason unenforceable, then that provision shall be deemed severed from this agreement and shall not affect the validity or enforceability of the remaining provisions of this agreement. This agreement is the complete statement of the agreement and supersedes any proposal or prior communications between us relating to the subject matter of this agreement.

If you have any question regarding this agreement, you may contact as below:

TERRA computer systems Ltd.
Olomoucka 81
627 00 Brno
Czech Republic
Europe

Phone: +420.548.423.811
Fax: +420.548.423.810

<http://www.terra.cz>
info@terra.cz

3 Menu

3.1 Menu Structure

File

Job Scheduler - shows Job Scheduler window for controlling the recording process on a PC

Job Editor - shows Job Editor window for creating, deleting and editing duplication jobs

Device Status - shows window with status of connected devices

Read Image - displays dialog for reading image of the whole CD or DVD disc

Disc Xpress - runs program Disc Xpress for creation of CD or DVD images

Label Designer - runs Label Designer. This software is for designing CD and DVD print labels

Exit - quits Disc Manager

Job Scheduler

Duplication Mode - Disc Manager can duplicate

Read Discs Mode - Disc Manager can only read

Add New Job - add new job into Job Scheduler

Delete Job - delete selected job from the Job Scheduler

Edit Job - changes number of copies of the selected job

Copy Job - does the copy of selected job

Increase Priority - moves job higher in Job Scheduler to increase its priority

Decrease Priority - moves job lower to decrease its priority

Load Scheduled Jobs - load state of Job Scheduler stored on hard disc

Run

Start - runs duplication process. It starts all scheduled jobs from Job Scheduler window

Stop - stops duplication process after finishing already started discs. Recording of already begun disc will be not interrupted

Abort - stops duplication process as soon as possible. If disc is recording it will destroy this disc.

Reset Autoloader - this is for calibration loader for its default position

Reset Bin Positions - loader will forget levels in each of bins and set these levels to default values.

Network

Enable Server - enables server for controlling Disc Manager via network

Clients List - shows connected clients

Setup

Hardware settings - settings of your autoloader, recorders and printer

Ordering discs in output bins - according to the finished jobs

ARC - Advanced Recording control – tool for automatic duplication from directory

Registration - shows registration dialog for insertion the licence key and owners data

Analyse

CD Test - this runs PlexTools application if you have it installed in your computer

CD Analyse - this is for analysis of your CD

DVD Analyse - this is for analysis of your CD

Reporting

Settings - setting for sending notification through emails

Email Notification - enable or disable email notification

Send Service Info - sends service logs of Disc Manager to software support

Export Service Info - creates c:\service.zip file with all service logs

Language

This menu is for switching between several languages

View

View Toolbar - this shows/hides toolbar

View Statusbar - this shows/hides status bar

View Title Screen - this enables/disables displaying of title splash screen

Window

This menu is for switching between windows in Disc Manager

Help

Help Topics - shows this help

TERRA Home Page - opens website of the company TERRA computer systems

About - shows dialog about Disc Manager application

3.2 Toolbar



Job Scheduler - shows Job Scheduler window for controlling the recording process on a PC



Job Editor - shows Job Editor window for creating, deleting and editing duplication jobs



Device Status - shows windows with status of connected devices



Start - runs duplication process. It starts all scheduled jobs from Job Scheduler window



Stop - stops duplication process after finishing already started discs. Recording of already begun disc will not be interrupted



Abort - stops duplication process as soon as possible. If disc is recording it will destroy this disc.



Read Image - displays dialog for reading image of the whole CD or DVD disc



Disc Xpress - runs program Disc Xpress for creation of CD or DVD images



Label Designer - runs Label Designer. This software is for designing CD and DVD print labels. This software is for designing CD and DVD print labels. Description you will find in the Label Designer User Manual.



Help - shows this help



About - shows dialog about Disc Manager application

4 Menu File

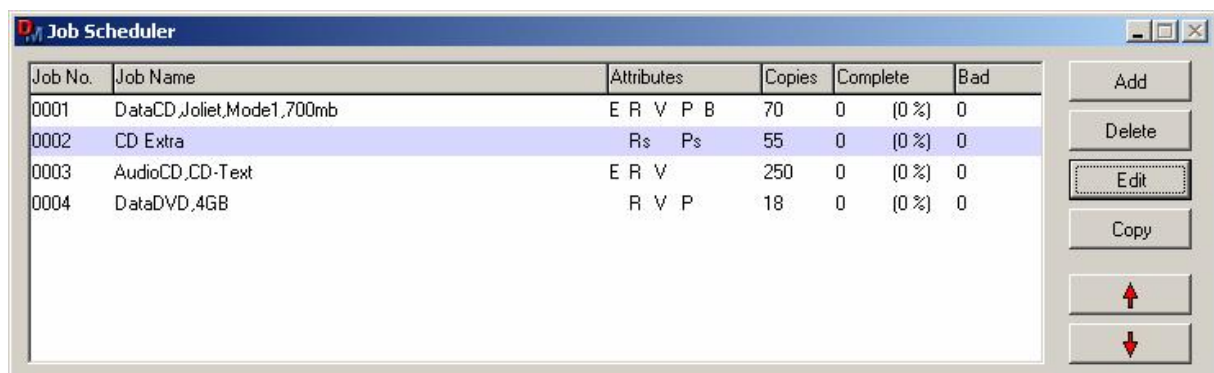
4.1 Job Scheduler

Job Scheduler is main window of the Disc Manager. It shows scheduled jobs. On the right side of the window there are buttons for scheduling.

Read Discs

You can add predefined job (**Add** button), delete selected job (**Delete** button) or edit number of copies of the selected job (**Edit** button). With **Copy** button you can do the copy of selected job. Two buttons at the bottom are for control order of scheduled jobs. You can move selected job up or down and say which one will be executed first.

After click **Start** button from the toolbar or after choose menu item **Run/Start**, the Disc Manager will control automatic loader to perform producing scheduled discs according to the given jobs until all jobs have been done or the user stops the process. A job is done when all discs have been produced.



There are several sections in the Job Scheduler. **Job No.** section is for identification job, this number is created automatically by Disc Manager. In **Job Name** section you can see name of the job. **Copies** shows total quantity of discs for duplication, **Complete** shows quantity and percentage amount of finished discs and **Bad** shows number of bad discs.

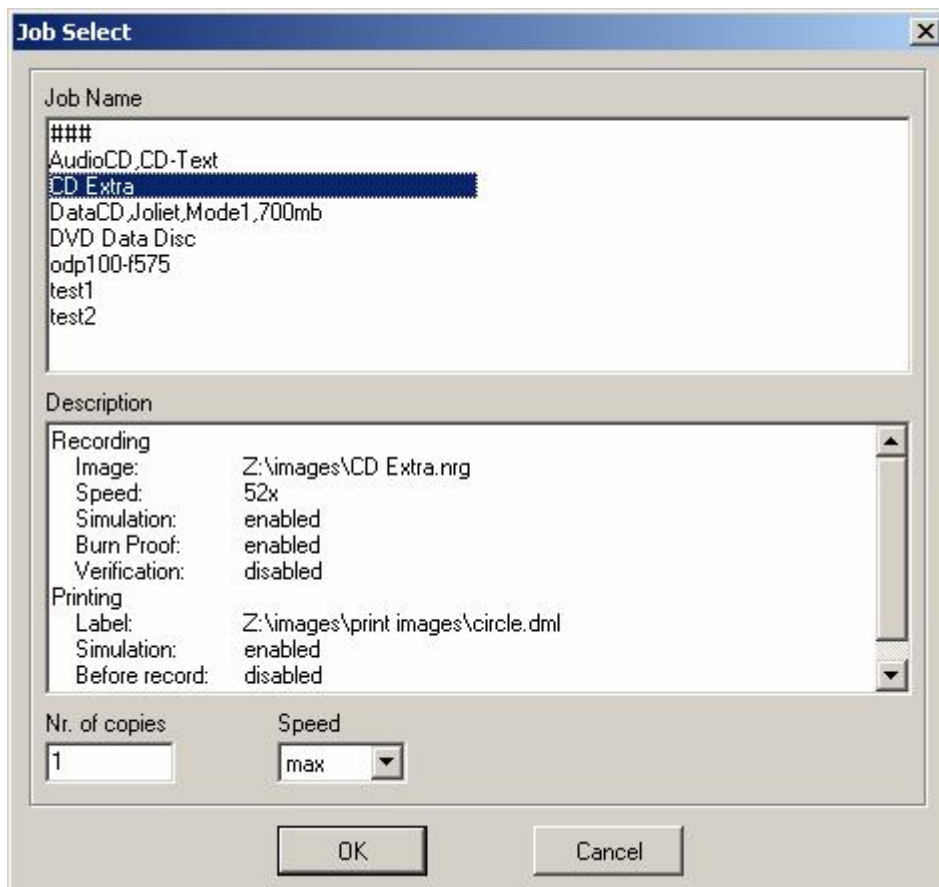
In **Attributes** section there you can see following parameters:

- E** erase rewriteable media
- R** recording
- Rs** simulation recording
- V** verification
- P** printing
- Ps** simulation printing
- B** print before recording
- W** wait for previous job

Tip:

If you move cursor over some job then tool tip with description of job will be shown.

The following dialog window will be displayed if you click **Add** or **Edit** button. Here you can select one of the predefined jobs and then set recording speed and number of copies you want to produce.

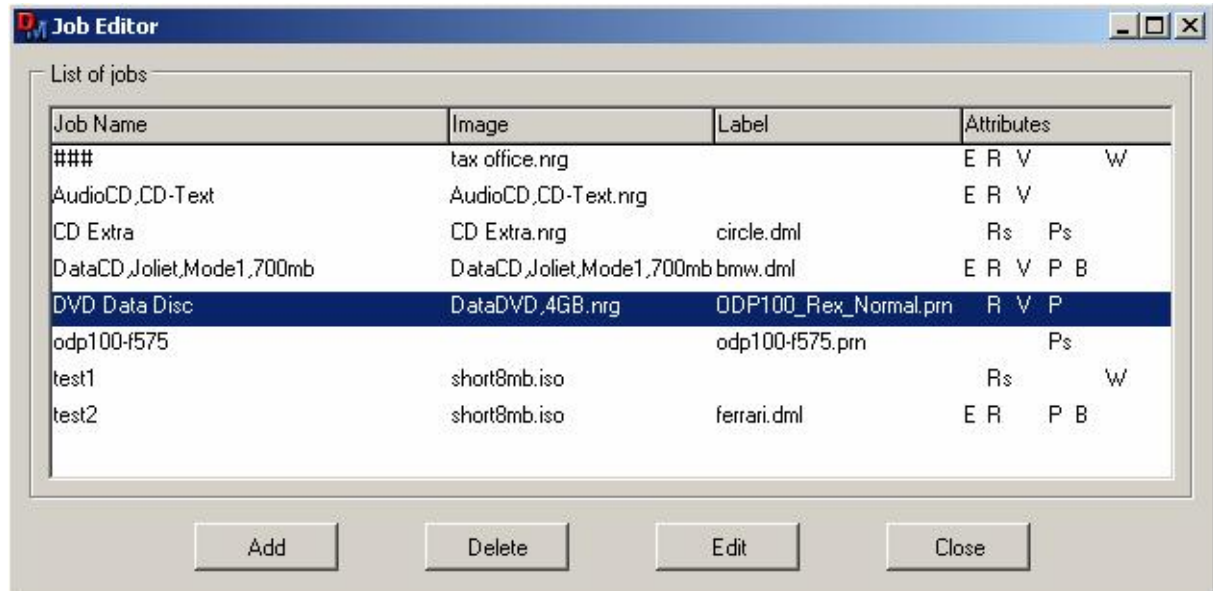


Tip:

During the duplication process the Disc Manager automatically saves state of Job Scheduler. So if there is some problem with Disc Manager or with computer or hardware there is possibility to load scheduled jobs after new start of Disc Manager from menu **Job Scheduler/Load Scheduled Jobs**.

4.2 Job Editor

What is a Job. An order for Disc Manager to record a number of identical discs is called a job. You can define all specifications needed to do the job in Job Editor. In Job Editor you can see list of defined jobs. At the bottom of this window there are four buttons.

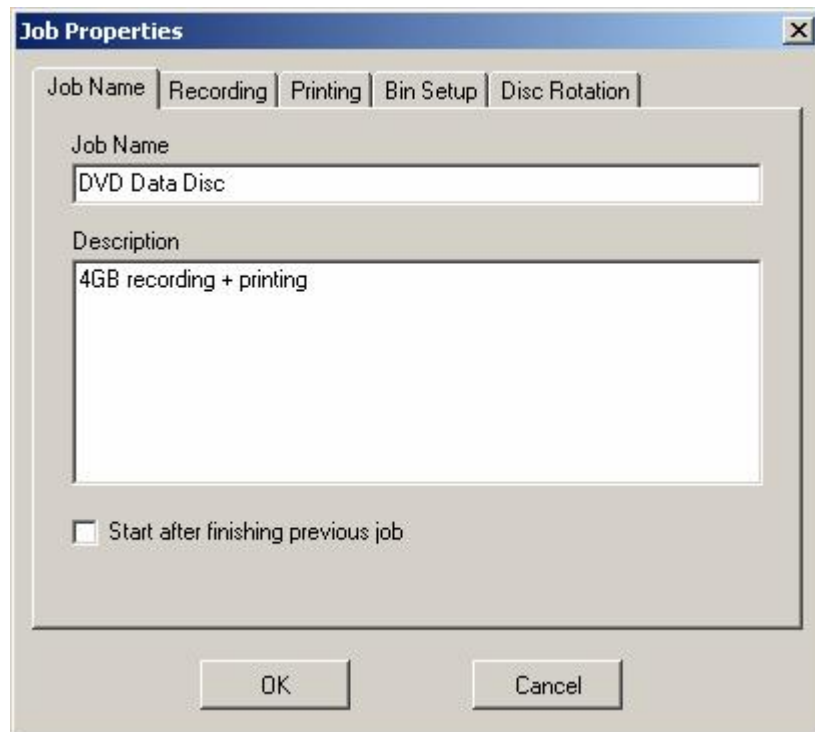


For add new job to the list of jobs, for delete selected job from the list and for edit job properties. Last button is for close Job Editor window.

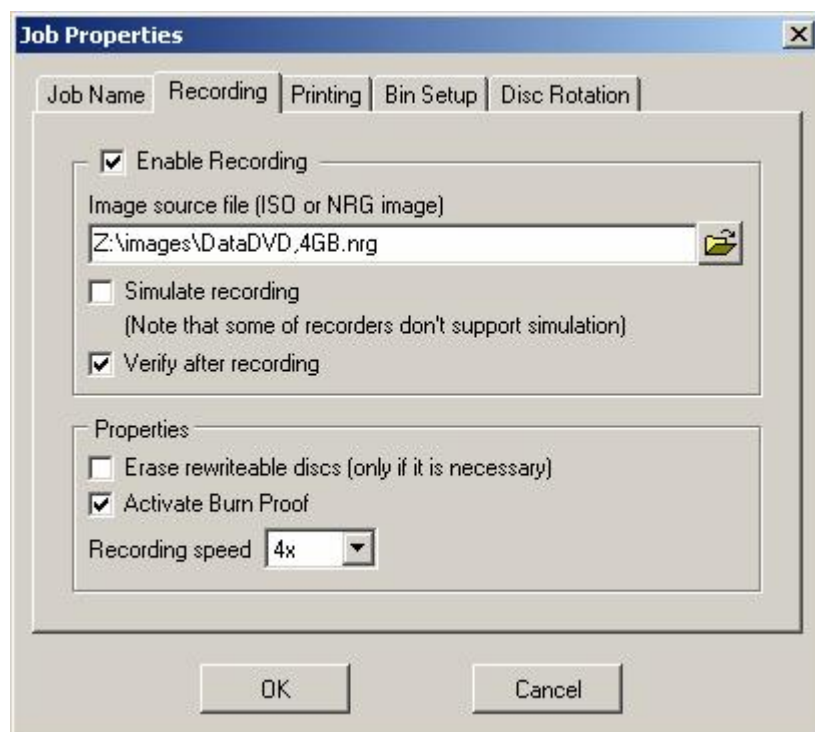
In **Attributes** section there you can see following parameters:

- E** erase rewriteable media
- R** recording
- Rs** simulation recording
- V** verification
- P** printing
- Ps** simulation printing
- B** print before recording
- W** wait for previous job

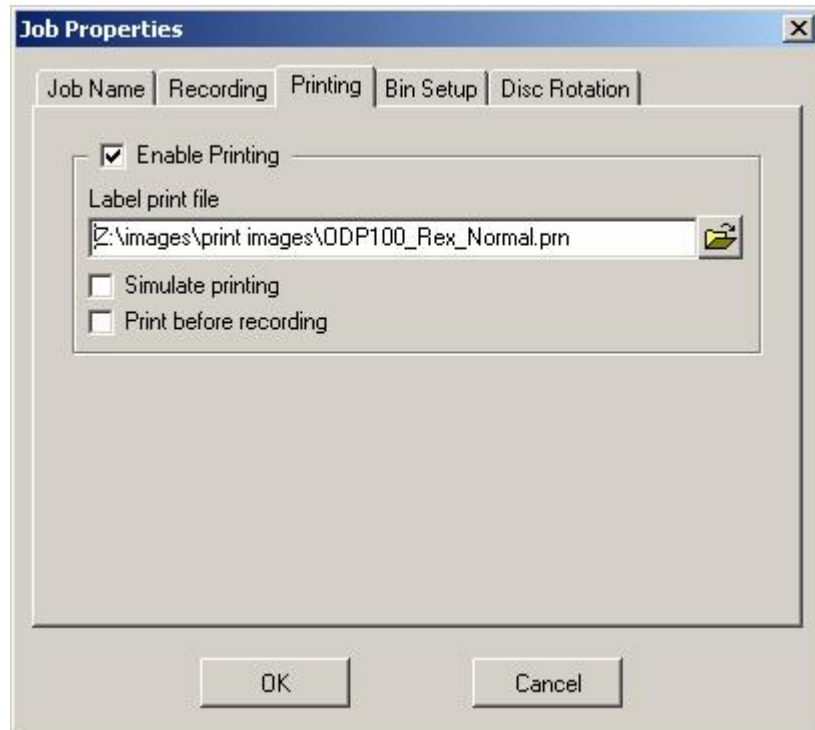
If you choose **Add** button for create new job or **Edit** button for editing the existing job then you can see following dialog window. Here you can set, if the job consists of the recording, of the printing and of the erasing. In **Job Name** bookmark there you can set name of the job, its description and also you can check parameter if the job will wait for finishing previous job.



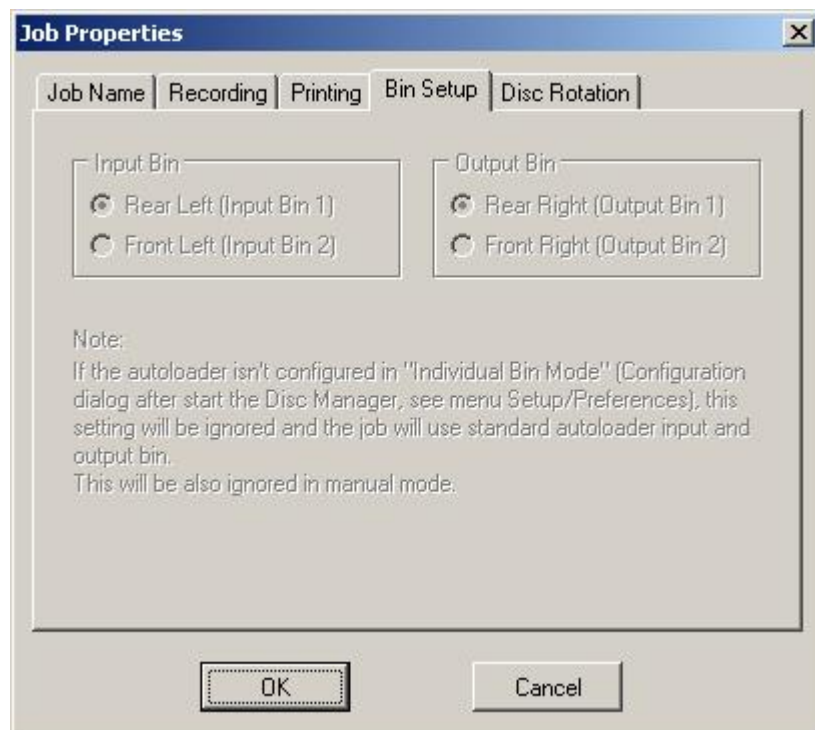
The **Recording** bookmark is for enable or disable recording. Additional parameters for recording are activation of Burn Proof mechanism and speed of burning. If you check "Erase recordable discs", the discs will be erased before recording. You can also define jobs only for erasing the discs.



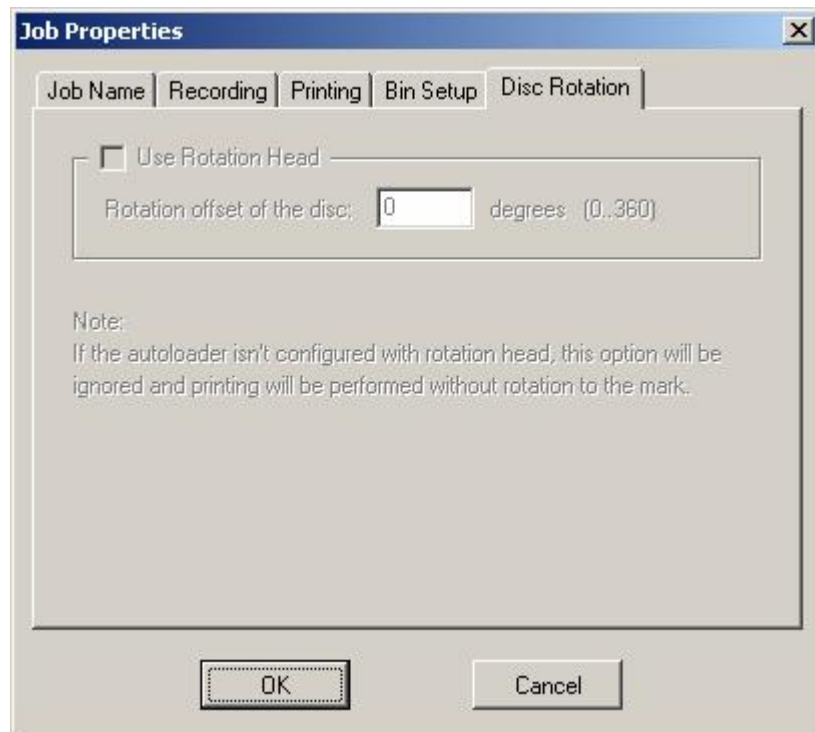
If you choose printing and recording job, you can set also classic order of doing job (record and then print) or print before recording method.



The following option **Bin Setup** will be enabled only if you have your autoloader configured with individual control of its bin. Then you can set which hopper is for your job input and which is output.



For rotation discs to the index mark you need special rotation head on your autoloader and it must be also configured in configuration dialog. If you have this you can select offset of rotation for all discs in your job.



Note:

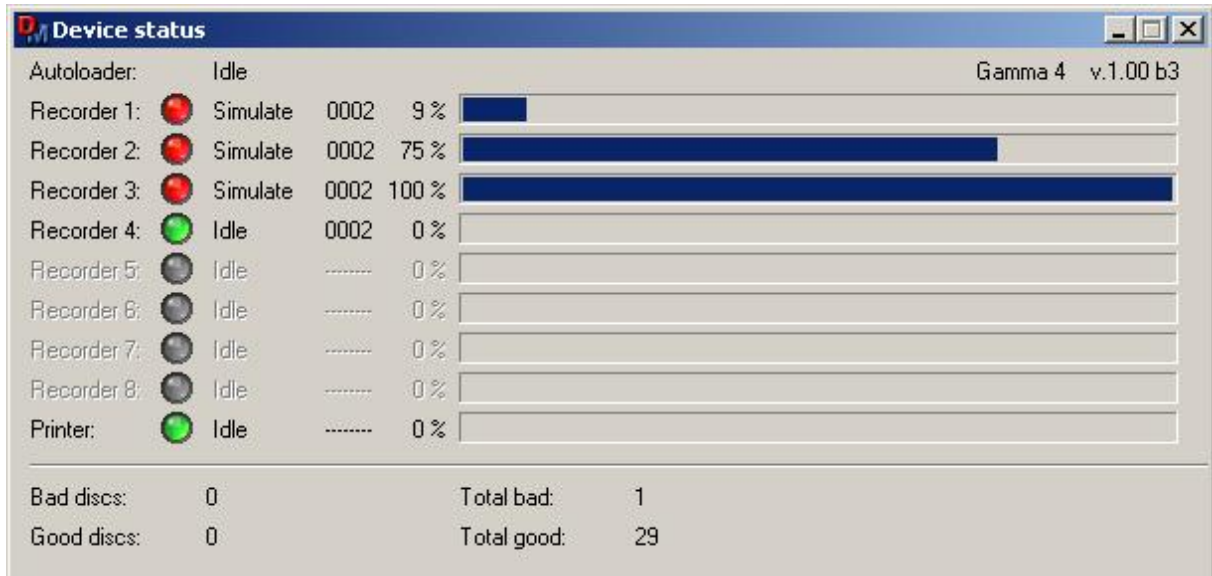
Maximal recording speed isn't restricted. But TERRA computer systems company recommends to all their customers maximal speed 32x for data and 16x for audio. This is because of many incidents of destroy CD during the full speed recording on fast drives (48x and 52x) and because of quality of recorded discs.

If you set some speed and CD or DVD is recorded by lower speed, it can be caused by insensitivity of your media and your recorder.

4.3 Device Status

This window displays status of the connected devices. It shows status of the autoloader and its version, status and progress of the each recorders and status of the connected printer. At the bottom of this window you can see quantity of good and bad discs done from the start of Disc Manager and total quantity of good and bad discs during whole being of the Disc Manager.

For show this window you can click at the **Device Status** button on the toolbar or you can see it by clicking on the menu **File/Device Status**.

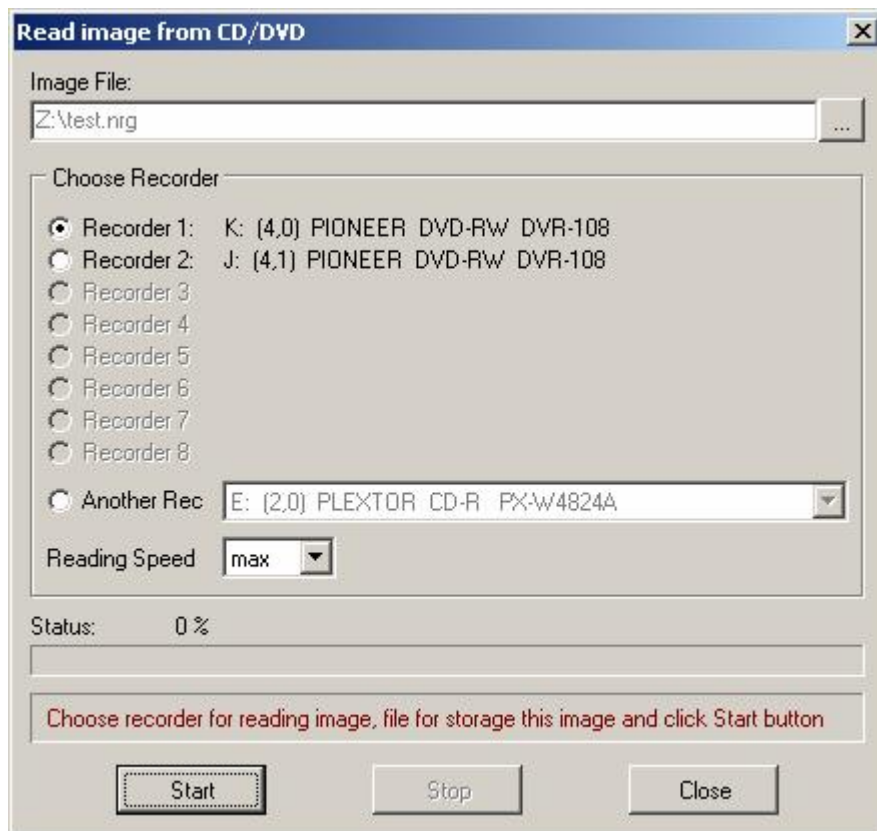


Tip:

If you have ODP100 or ODP200 printer and if you move mouse cursor over the Printer label, you can see ink-level for black/photo and for colour cartridge.

4.4 Read Image

For creating new job with recording, you will need image file of original disc for duplication. The easiest way how to get this image is through the function Read Image. For open following window you can click the menu **File/Read Image** or button **Read Image** from the toolbar.



In this dialog there is necessary to choose name of the image file with path to store it onto hard disc. Then you have to choose drive in which is original CD or DVD inserted. There are two possibilities.

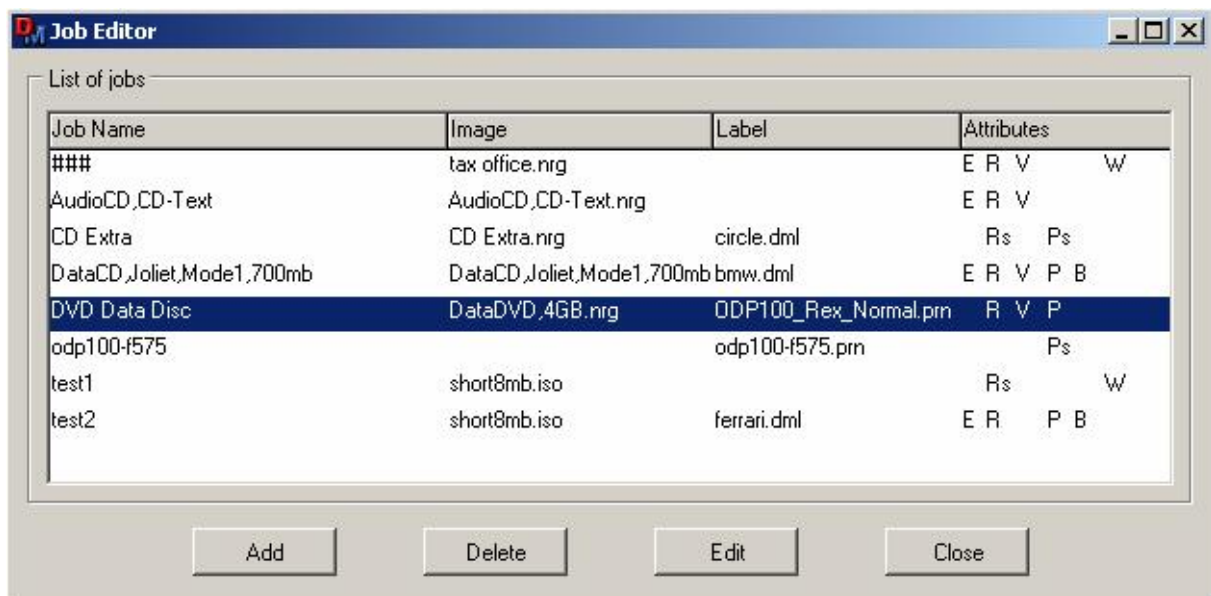
Either you can choose some drive configured with autoloader (and then the loader will be used for loading and unloading disc) or you can choose some other CD/DVD drive that is installed in your computer (and you will be ask to insert disc manually). Additional parameter is speed of reading. If you have set all these things you can click **Start** button to begin reading process.

5 Create a Job

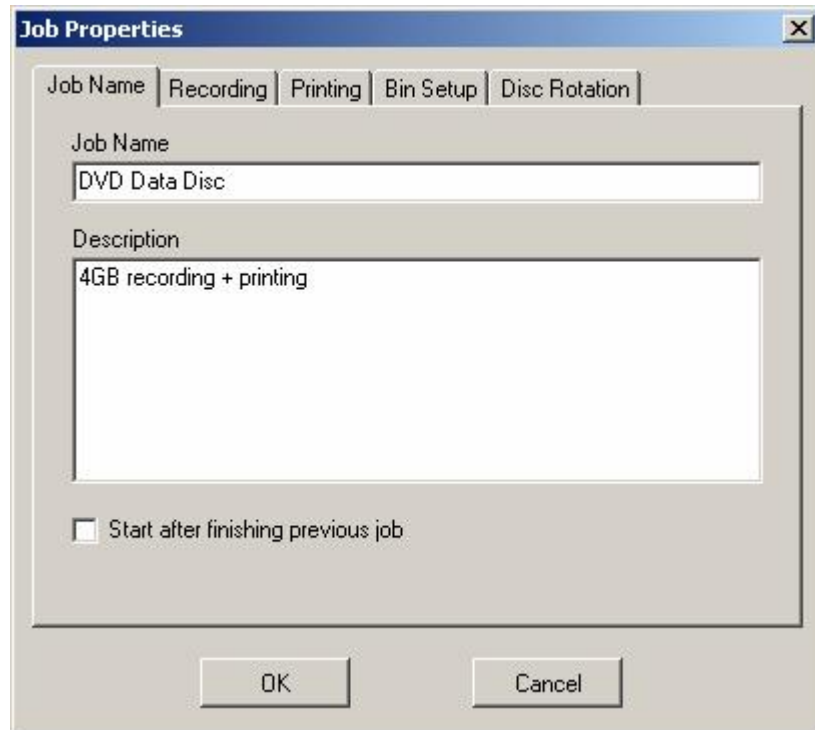
If you want create new job you have to prepare needed images. For recording you will need ISO or NRG image and for printing you will need PRN image file.

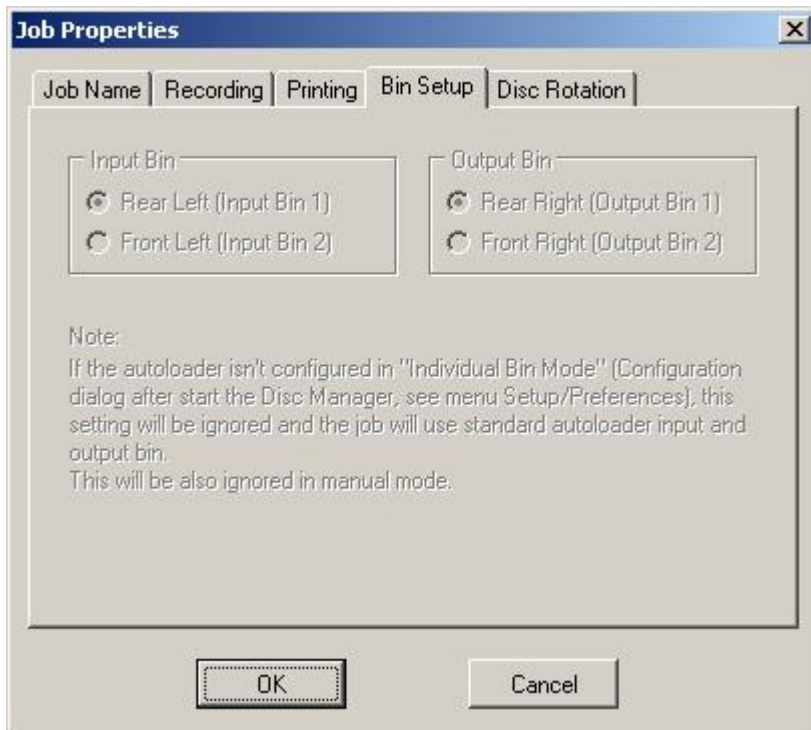
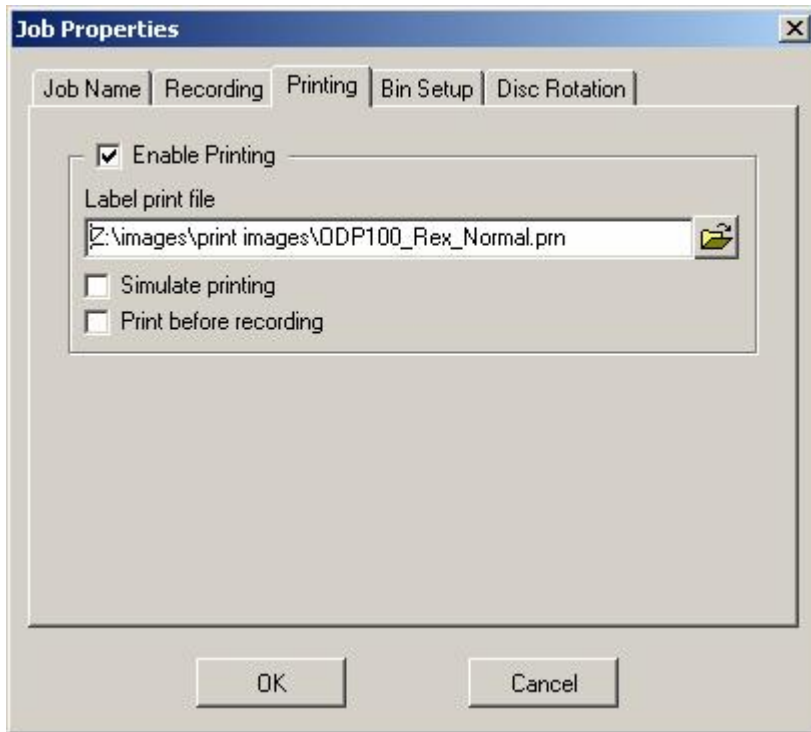
The easiest way how to create NRG image is with function **Read Image** from the toolbar Second possibility how to create ISO or NRG image for recording discs is The PRN file you can create in Label Designer. Open this application by clicking on the menu **File/Label Designer** or by clicking on the **Label Designer** button from the toolbar. The way how to create PRN file in this application is following. Design your label, then select File/Print and then select "Print to file" in print dialog. After clicking OK button the program ask you for name of PRN printer file. For further information see the Label Designer help file.

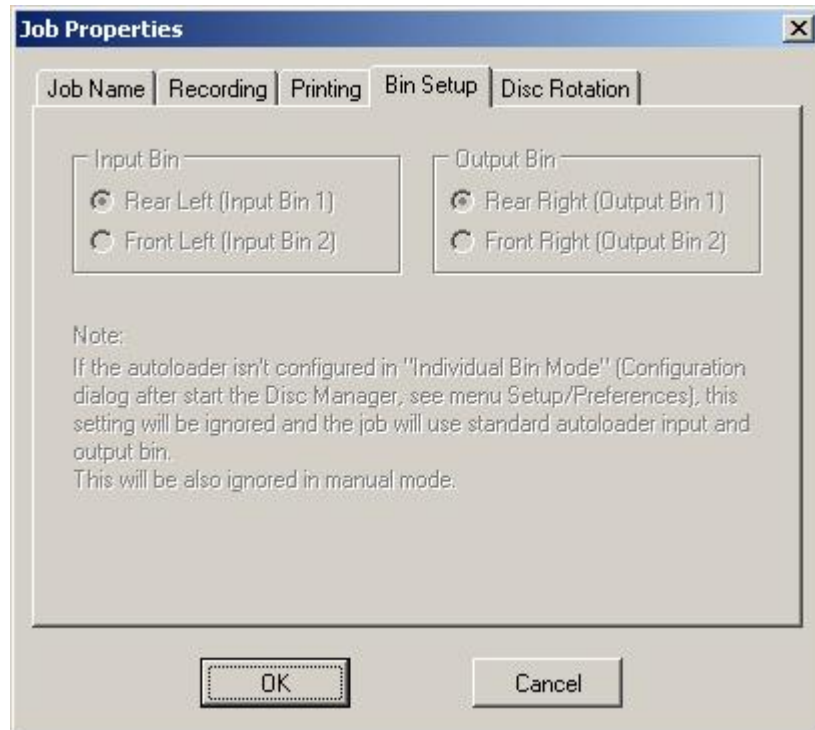
Now you have the needed images prepared, so you can open Job Editor by clicking on the menu **File/Job Editor** or by clicking on the **Job Editor** button from the toolbar. Then there appears Job Editor window



So, click **Add** button for creating a new job. You will see following dialog. Here you set name of the job, its description and choose type of your job - recording, printing, recording and printing, print before recording and optionally erasing the rewriteable discs and other properties. In this case you will need previously created images.







6 Control the Duplication Process

The production process is controlled by the **Start**, **Stop** and **Abort** buttons from the toolbar or from menu **Run/Start**, **Run/Stop** and **Run/Abort**



Start button or menu **Run/Start** starts production discs according to jobs scheduled in Job Scheduler window. It runs until all jobs have been done or the user stops this process.

Note:

Don't manipulate with CD or DVD in input and output bins during the duplication process. Autoloader remembers number of discs and positions where it picks last disc. And if you take some disc from the output bin during work the autoloader cannot find out new proper position. If you want to reset these bin positions, go in menu **Run/Reset Bin Positions**.



Stop button or menu **Run/Stop** is for interrupt production process. This function does not destroy any disc, because duplication process is stopped after already begun CD or DVD.



Abort button or menu **Run/Abort** stops duplication process as soon as possible. If there are discs in the recorders and burning is proceeded, then these discs are destroyed and put into reject bin. This function stops the production process immediately.

7 Configure Hardware

First the most important thing you have to do you must configure your hardware. After start Disc Manager is displayed configuration dialog (see below) window automatically. You can also open this dialog during work in Disc Manager in menu **Setup/Preferences**.

There are three types of devices you must configure. Your autoloader, your recorders you have connected and printer.

In autoloader section you must select type of your loader. At this moment is supported Gamma, Samurai, Delta, Shuttle and Producer autoloader. You must also set serial port which is used for communication with your loader. By "Autoloader Bin Mode" you choice how you want to control use of loader hoppers. There is also item for rotation discs to index mark by use special rotation head. If you uncheck "Enable autoloader" you switch the Disc Manager into manual mode. In manual mode is disabled printer and you have allowed jobs only with recording and without printing.

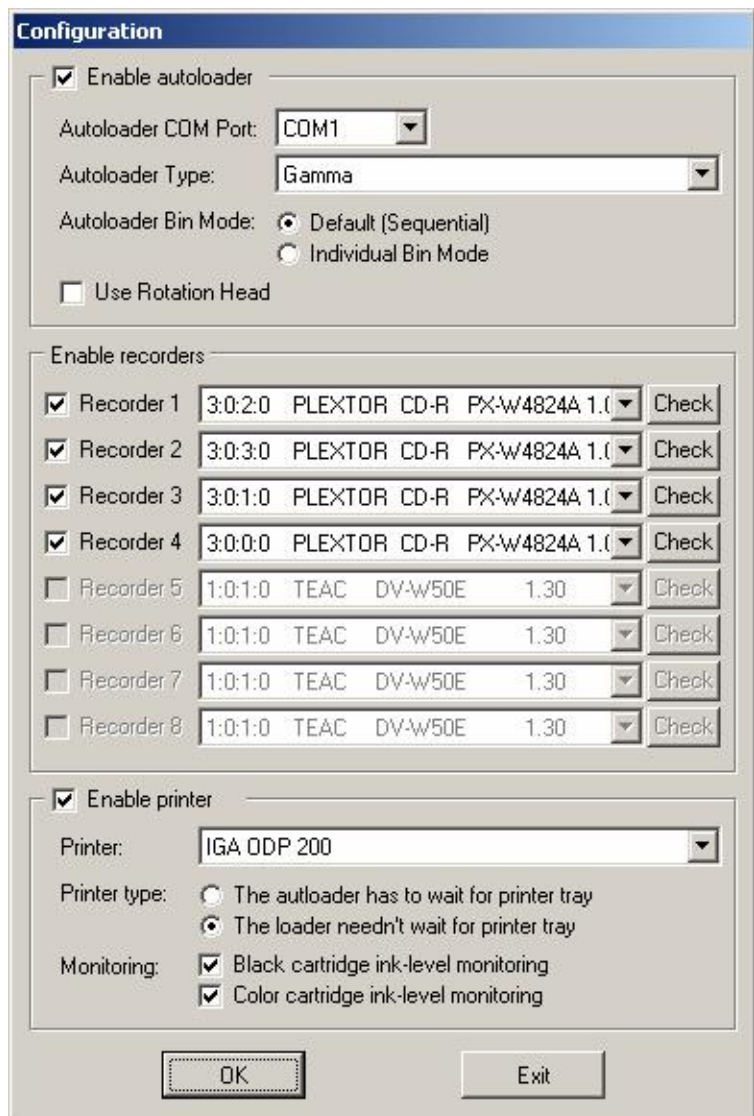
In recorders section you can select how many recorders you will use and which of this will you use. At the right side of each recorder is **Check** button. This button is for checking if selected recorder is really recorder with right position in duplicator tower. After click this button the application ejects tray of selected recorder and closes this tray and user have to check if it was recorder in right position.

You can also choose if you want to use printer. If so, you have to select type of your printer and correspondent printer drive that you have installed in Windows. Construction of some printers don't allow you to print during autoloader movement, because their tray goes out of printer during printing. For these type of printer is necessary to set "The autoloader has to wait for printer tray" (for example Signature printers). Other printers are printing inside the printer so the loader needn't wait for printer tray (for example ODP100 and ODP200).

If you have ODP100 or ODP200 printer then you can check monitoring ink levels in cartridges. Then Disc Manager is checking this level and if there is no ink, warning message will displayed.

Important note:

If this will not be configured correctly, Disc Manager will not work properly!



8 Advanced functions

8.1 Network

Disc Manager can be controlled externally (for example Disc Manager NET Client and other special applications) via TCP/IP network protocol. This function must be allowed by licence key that releases using of network for remote controlling (if you have allowed it you can see the name of application Disc Manager NET Server).

The menu **Network/Enable Server** is for enable or disable communication through the network. If you have enabled server then this menu is checked and **Start** button on toolbar is with NET label:



Then you can connect to Disc Manager from remote computer by application that is able to communicate with Disc Manager NET Server. If you have no job in Job Scheduler and click **Start** button, then Job Scheduler will go into „waiting mode" - Disc Manager is waiting for jobs and if some job comes then it is started immediately. After finishing all jobs the Job Scheduler will stay in „waiting mode". If you need to leave „waiting mode" you have to click **Stop** button.

If you have server disabled then Start button is without NET label:



Now Disc Manager isn't able to communicate via network. And if you click **Start** button all scheduled jobs from Job Scheduler is performed and then for new duplication cycle Disc Manager waits again for click on **Start** button.

8.2 Error Reporting

This function is useful if you don't want to watch Disc Manager during all duplication process. You can set email notification and then if Disc Manager has some problem, email or SMS with this problem is sent to you. The following dialog with setting can be displayed by clicking on the menu **Reporting/Settings**.

A dialog box titled "Email notification setting" with a close button (X) in the top right corner. It contains two sections: "Local Email Setting" and "Kind Of Notification".
Under "Local Email Setting":
- Local Host: www.mydomain.com
- Local Port: 25
- Email Address: myemail@mydomain.com
Under "Kind Of Notification":
- Any autoloader error
- After each job is done
- All jobs is complete
At the bottom, there are three text input fields:
- To Email: someemail@mydomain.com
- Subject: Disc Manager - report
At the very bottom, there are three buttons: "Ok", "Check", and "Cancel".

There is necessary to fill in **Local Email Setting**. These values is for connecting on your email server account (this values are the same as for example in Outlook Express). Then you can select what kind of notification should Disc Manager reports. And finally address and subject where the emails will be sent. With **Check** button you can check if you set all correctly (it tries to send example email). If so, you have to confirm it by clicking **Ok** button.

If you have set all parameters then you can enable email notification by clicking the menu **Reporting/Email Notification**.

Note:

In some countries and with some mobile operators there is possibility to fill in right parameters for sending notifications as SMS to your mobile phone.

8.3 Serialization Printing

Disc Manager allows you to print two types of file. Either PRN file or DML file. Second one is file created by Label Designer (DML = Disc Manager Label) and in this application there is possibility to define serialization printing for serial numbers, barcodes and merge fields (auto incremental values for each copy of the disc).

For this you need appropriate licence key (like for network communication) which allow you to use serialization in Disc Manager and Label Designer.

So, if you define the serialization in Label Designer for some serial code or barcode or merge field, then if you create job with printing of this DML file, you will produce discs with unique label for each disc.

Note:

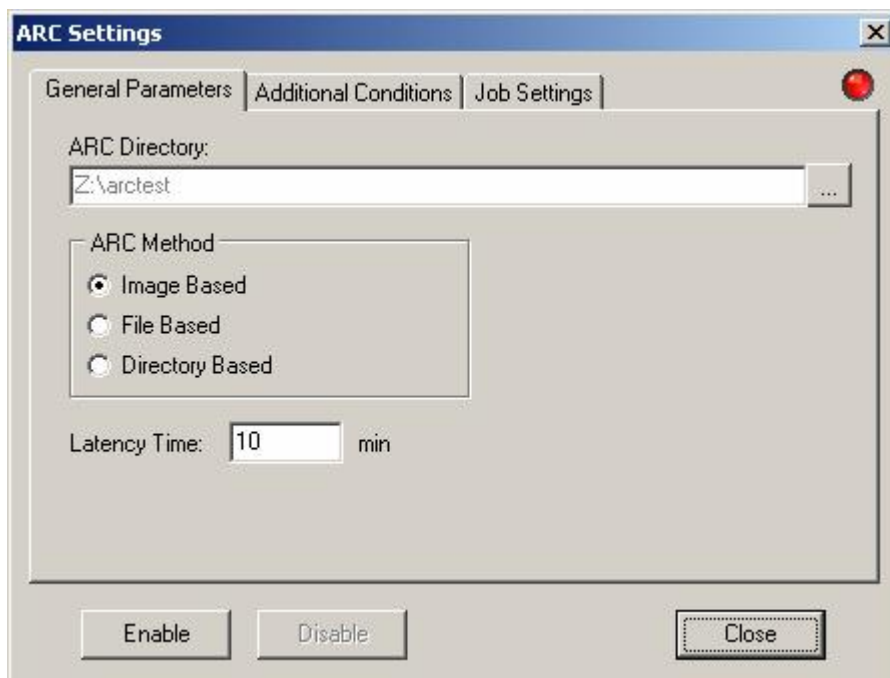
This function works in jobs that are defined as „printing jobs" or „record and print jobs". It doesn't work in jobs defined as „print before recording jobs".

8.4 ARC - Advanced Recording Control

Advance Recording Control is easy and powerful tool for automation of the recording and backup processes in network environments. ARC makes you possibility to record CD or DVD from various computers in the local network without installing any special software.

The principle is very easy. There is some directory (shared network directory) defined by user which is permanently monitored by ARC function. When there are some data and these data are not changed during monitoring, the ARC interprets these data as prepared for recording. Then the job is created and inserted into Job Scheduler.

For open ARC dialog window you have to click the menu **Setup/ARC - Advanced Recording Control**. By clicking it the following window is shown.

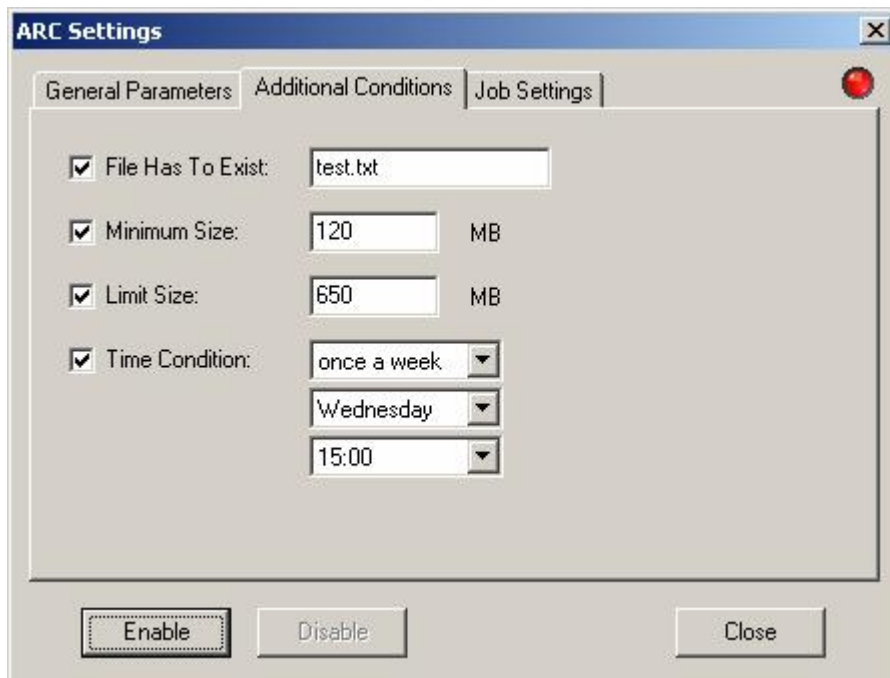


The **General Parameters** bookmark is for setting main parameters of ARC function. ARC Directory is directory which is monitored by this function. It is usually some shared network directory. In ARC Method section you can select from 3 various methods:

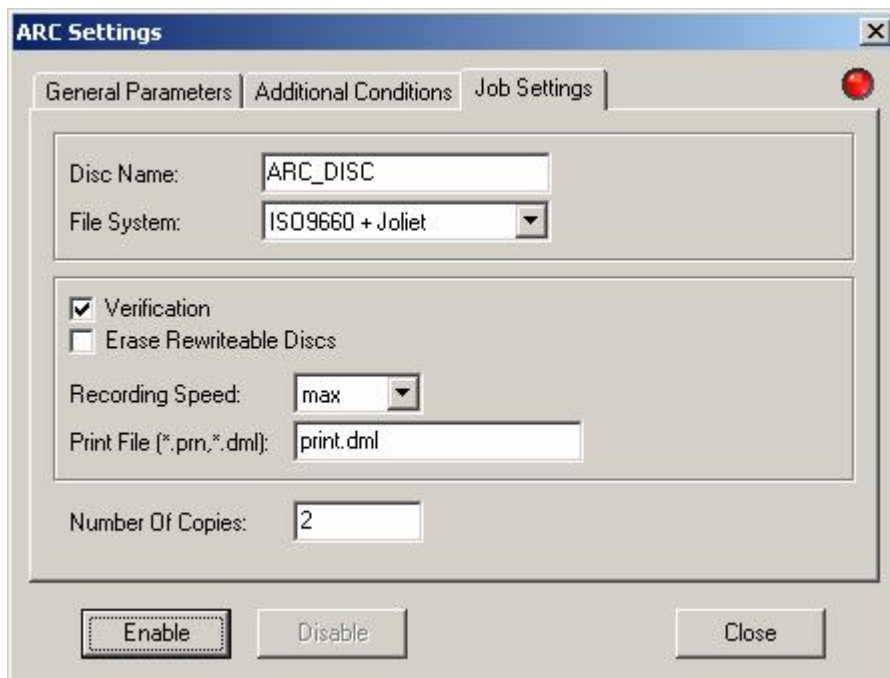
- Image Based: if some image is detected by ARC in monitored directory, this image will be recorded by Disc Manager
- File Based: the ARC directory is monitored as a whole and if data inside is not changed, image from this data is created and then recorded
- Directory Based: in the ARC directory there is collection of several subdirectories and each is monitored separately

Latency time defines time interval between monitoring ARC directory.

Next bookmark **Additional Conditions** specifies other conditions for creating job. There is condition for file which has to exist, for minimum size of data in ARC directory and time conditions:



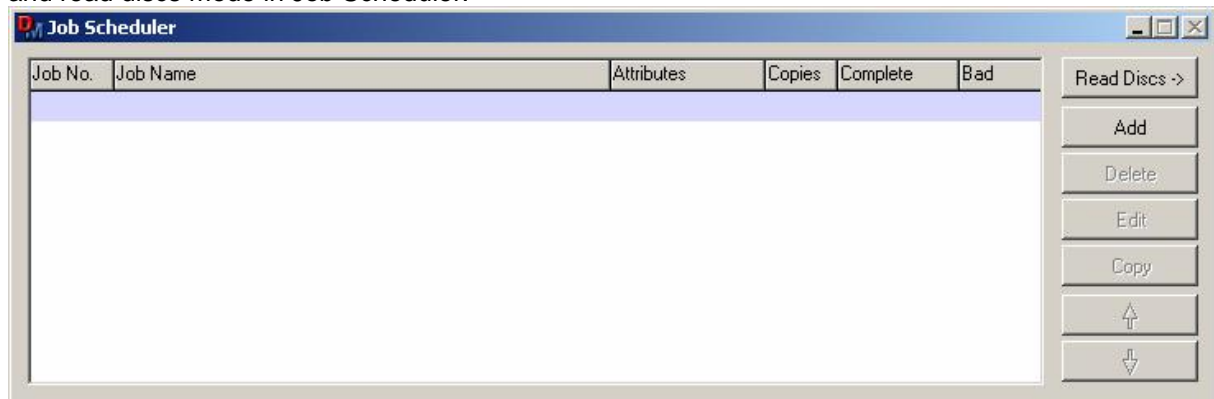
Last bookmark **Job Settings** is for definition job parameters.



If you have all ARC parameters defined you can run ARC function by clicking **Enable** button. Then indicator in the right top corner gets green and it indicates that ARC is running. Also in status bar in main window of the Disc Manager there is indicator that ARC is running. **Disable** button is for stopping ARC function.

8.5 Read Discs

With this function you can easily read your data CD or DVD discs and store them onto your hard disc. Content of each disc is stored into individual subdirectory of directory you will define for storing read discs. This function must be allowed by licence key that releases you switching between duplication and read discs mode in Job Scheduler.

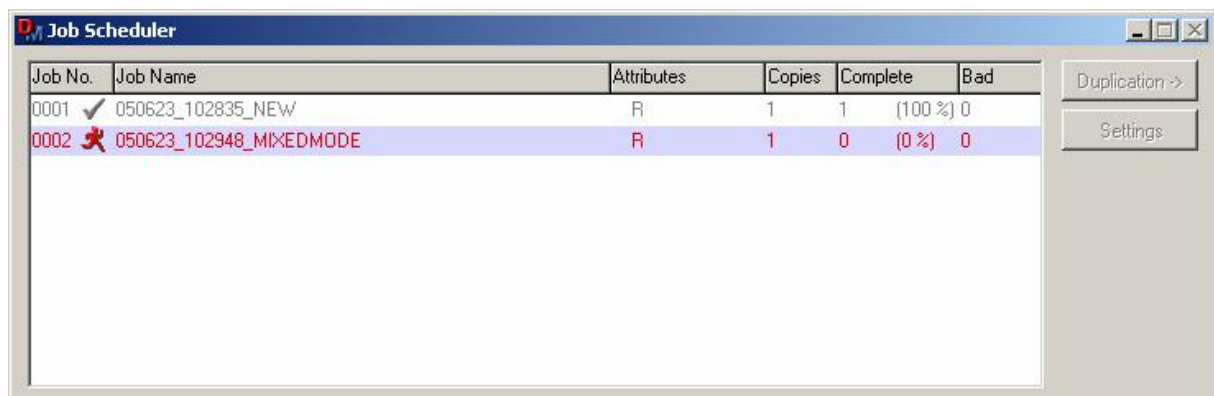


By clicking **Read Discs** button, the Job Scheduler switches into mode for reading discs and following setting dialog for this is displayed.

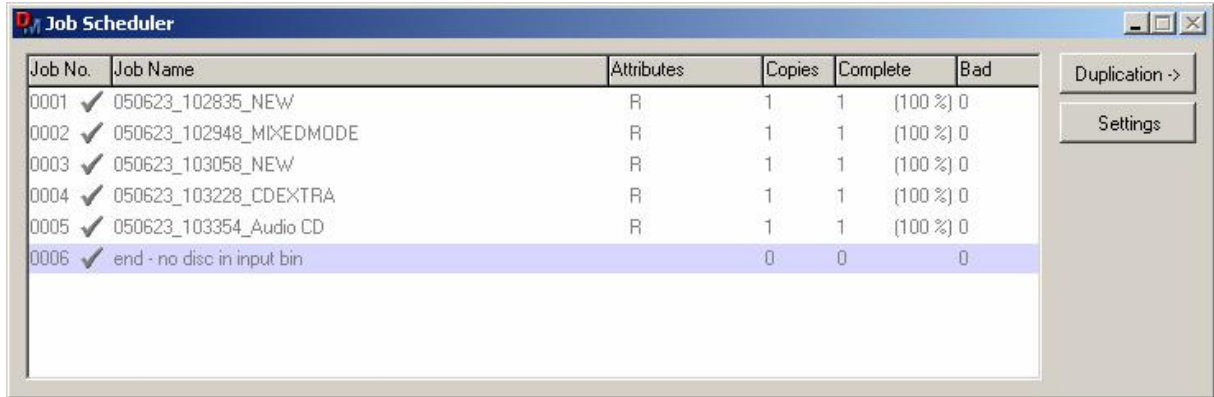


Here you have to set the directory, where read discs will be stored. And you can set if there will be logged copied and also not-copied files in the log file. This log file is stored in the directory that you have defined for storing the discs. You have open this setting dialog by clicking **Settings** button in Job Scheduler.

Now, if you click **Start** button or click the menu **Run/Start**, reading process will start.

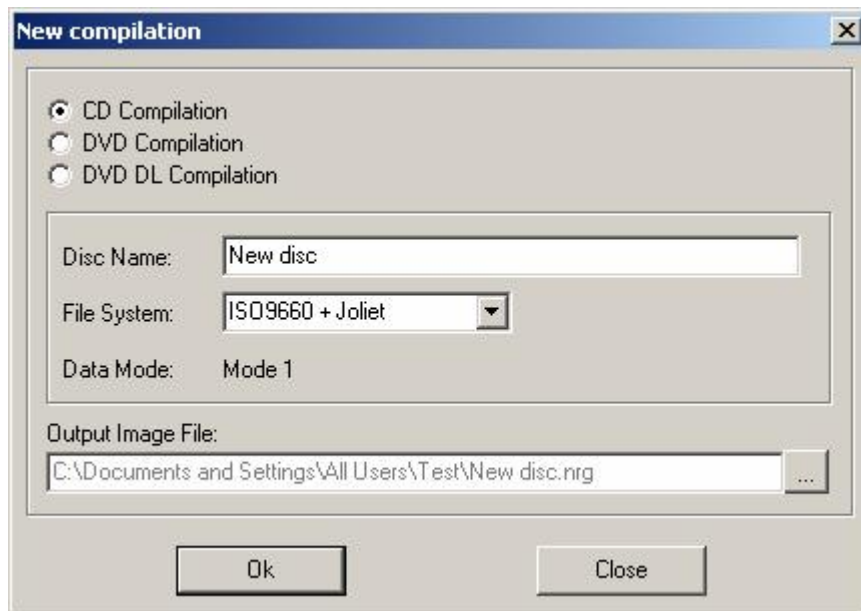


Whole process runs as long as there are discs in input bin. If it gets empty, reading process will finish.



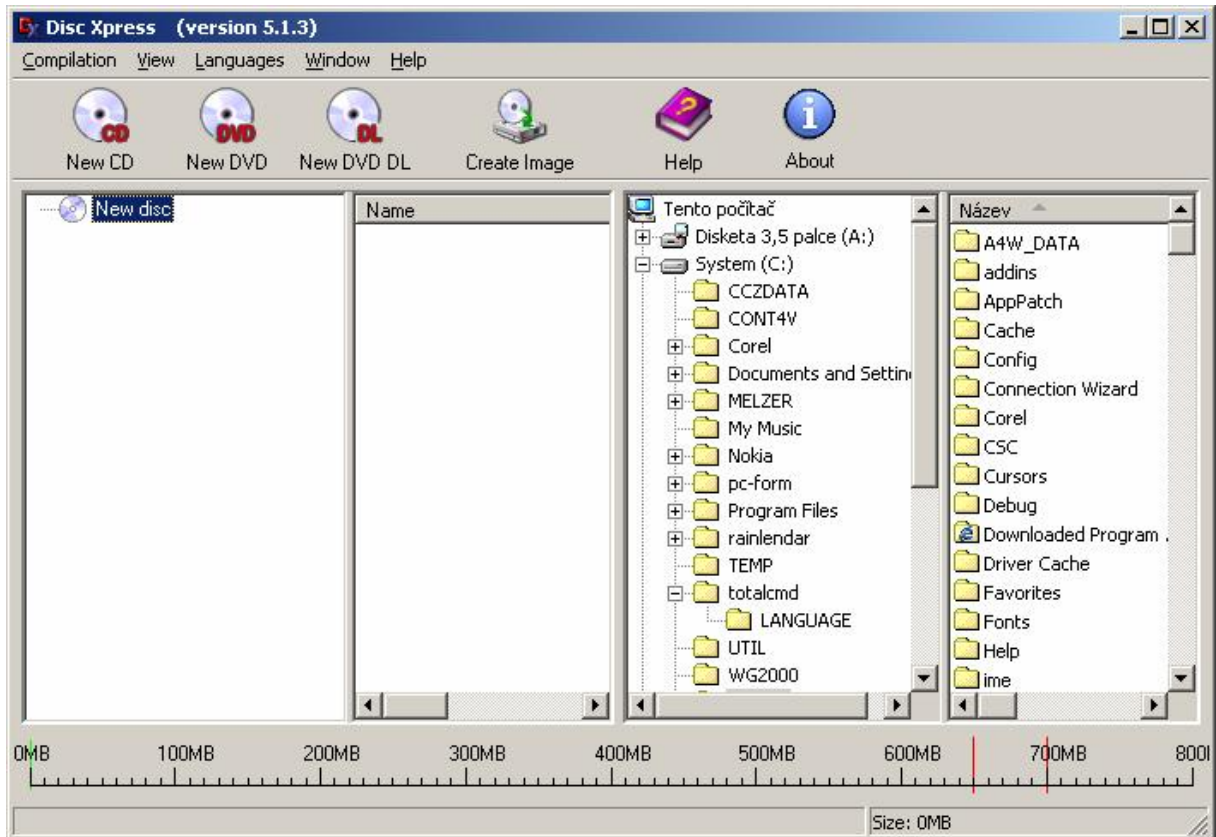
9 Disc Xpress

Disc Xpress is program for creation data CD and DVD. You can start this program from desktop or from the Disc Manager tool bar. After start appears dialog window in which you can choose type of compilation, disc name, file system and set the output image file.

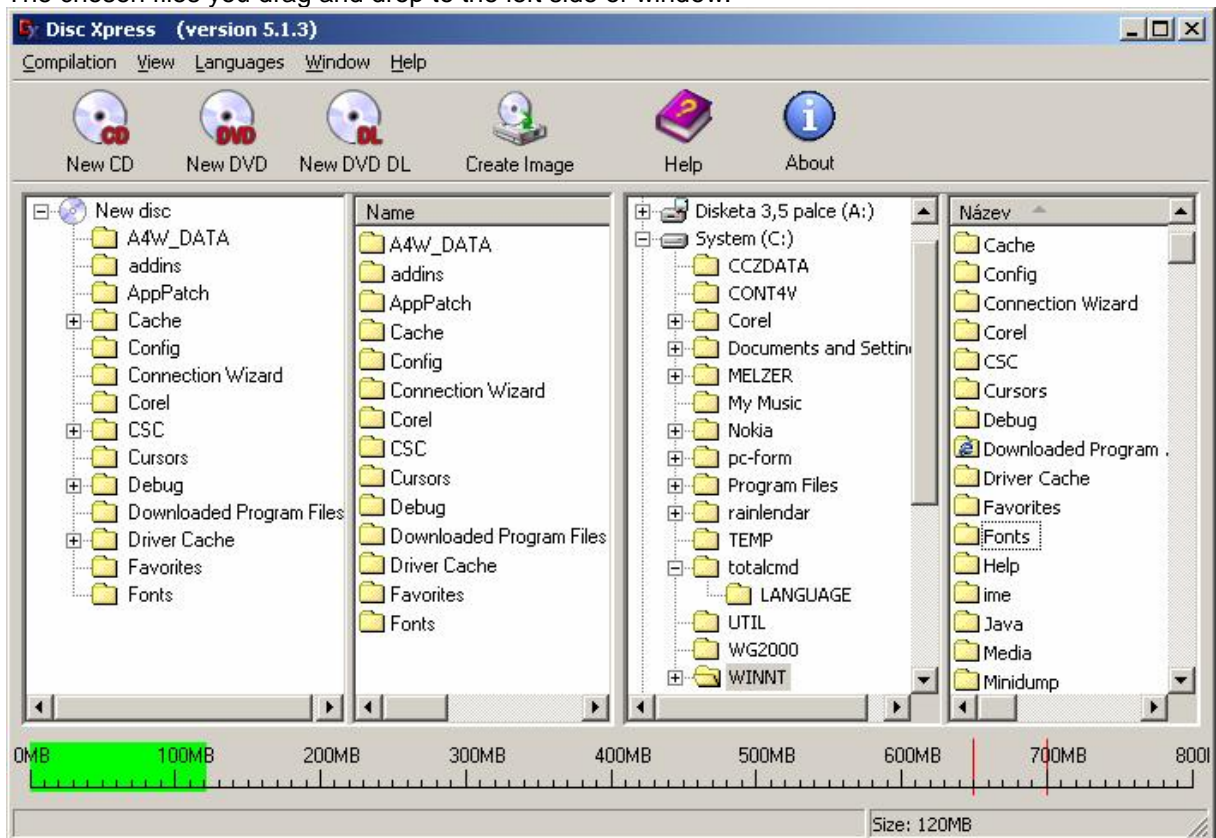


Click on OK confirms the settings.

Now opens the main Disc Xpress window.



On the right side is the structure as the tree in Windows and also the work with folders and files is the same. You can choose the folders and files with mouse or buttons Shift and Ctrl. The chosen files you drag and drop to the left side of window.

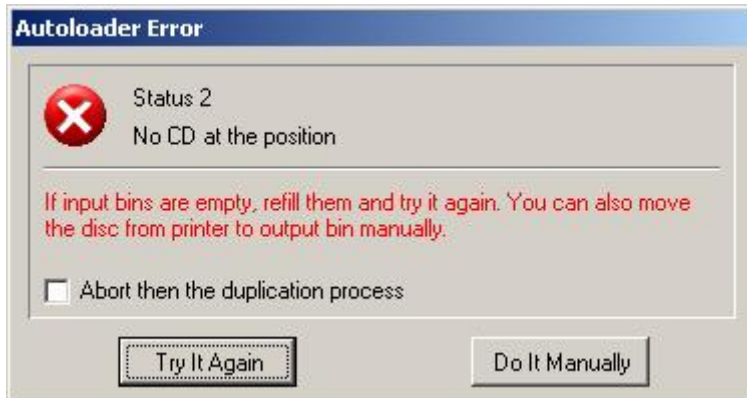


On the bottom of window you will see the amount of data on the disc.

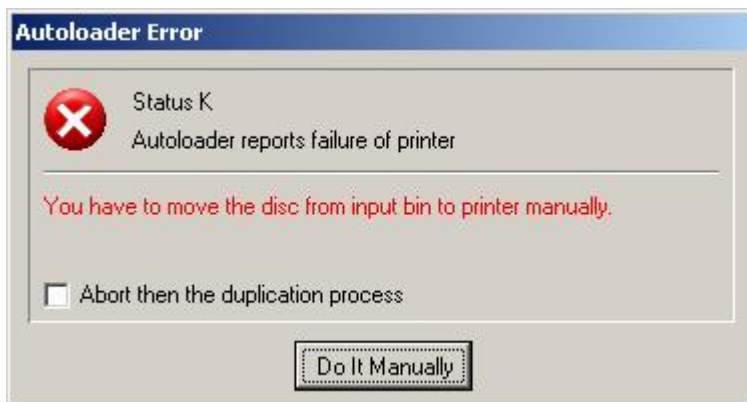
Appendix

Error States

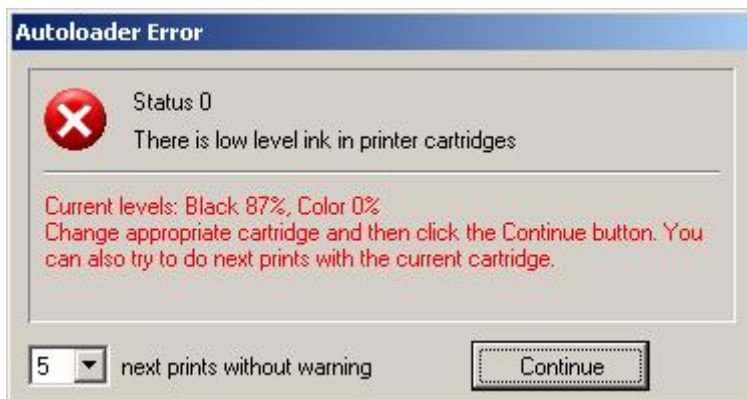
Examples of some errors



There are no discs in input bin, so autoloader reports it can't find CD at this position. You have now 2 possibilities. Refill input bin with empty discs and try it again or you can also put disc in appropriate recorder manually. If you check „Abort the duplication process“, it will work like if you click Stop button from toolbar after solving this error.



There is some hardware problem with the printer. Printer doesn't communicate with autoloader. It's very difficult to decide what happened so there is only one possibility – to do it manually.



Printer reports low ink-level. In this case you can change appropriate cartridge or you can try to print some next copies with the current cartridge (without ink level warning). Usually there is some extra ink although printer reports that there is no ink. So you have possibility to print 1, 2, 5 or 10 next copies with this cartridge.

List of all errors

For Gamma, Delta, Samurai, DiscJet and Shuttle autoloaders:

status	description
0	low ink-level in printer
1	invalid command parameter
2	no disc at the position
3	wrong position parameter - the source or destination position doesn't exist
4	right margin reached
5	left margin reached
6	lifter blocked - can't go top
7	lifter blocked - can't go down
8	init error - cannot initialise the loader
9	can't pick disc
A	moving error
B	timeout error
C	ERR_UNLOAD (not in Gamma series)
D	ERR_END_BIN (not in Gamma series)
E	power up initialisation error
F	disc lost
G	ERR_POSITION (not in Gamma series)
H	rotate CD error (rotation head is not yet implemented)
I	reject bin is full
J	drive error (can't open or close)
K	printer error (can't open or close)
L	reserved
M	disc not put (some problem with gripper)
N	door open (not in Gamma series)
S	rotator head not present (while trying to use rotation)
T	rotator bus is blocked
U	communication with rotator failed (can't establish connection)
V	communication with rotator lost (during transfer)
W	rotator is not responding

For Producer autoloader:

status	description
0	low ink-level in printer
1	loader jammed
2	input hopper empty
4	command sequence error
9	disk stuck
A	output hopper full
B	door open
C	hopper not correctly inserted
D	reject hopper full
F	unknown error