

Installation Wizard 2

User's Manual

Device Selection
Select a device to setup or upgrade

MAC	IP Address	Model
00-02-D1-03-FF-0B	192.168.0.146	VS7100

Double click to link to the selected device.

Please check the MAC and model name in the product label of your device first. Then, you can start to link to your device and show the main screen by double clicking the item in the above selection list.

If you are not able to find your device in the above selection list, please make sure all cables are properly connected to your device and then click on the "Refresh Devices" button.

Network Camera **VIVITEK**
Model NO: PT7137 0560
MAC: 0002D1XXXXXX

FC
Made in Taiwan
This device complies with part 15 of the FCC rules. Operation is subject to the following two conditions:
(1) This device may not cause harmful interference, and
(2) this device must accept any interference received, including interference that may cause undesired operation.

You can find the product label in the rear/bottom part of your device.

Contents

Chapter 1	Installation.....	1-1
1.1	Software Installation	1-1
Chapter 2	Using Installation Wizard 2	2-4
2.1	User Interface.....	2-4
2.1.1	Action buttons	2-7
2.1.2	Function buttons.....	2-8
2.2	Manual Setup	2-10
2.2.1	System Setting	2-11
2.2.2	Network Setting	2-13
2.2.3	Ports Setting	2-16
2.2.4	DDNS Setting	2-17
2.2.5	Mobile Access	2-20
2.2.6	Wireless Setting	2-20
2.2.7	Apply to selected device	2-26
2.3	Access Information	2-28
2.4	Upgrade.....	2-32
2.4.1	Device Information	2-33
2.4.2	Firmware Information	2-34
2.4.3	Select Firmware	2-34
2.4.4	Start Upgrade	2-36

Chapter 1 Installation

1.1 Software Installation

The following are steps for the software installation.

STEP 1: Put the Installation disk into the CD-ROM drive, and the installation should start automatically. If the installation does not start, click on “Start” on the lower left corner of your screen, open “My Computer” and double click on the CD-ROM icon. The Installation Wizard 2 Installation Window will appear as Figure 1-1.

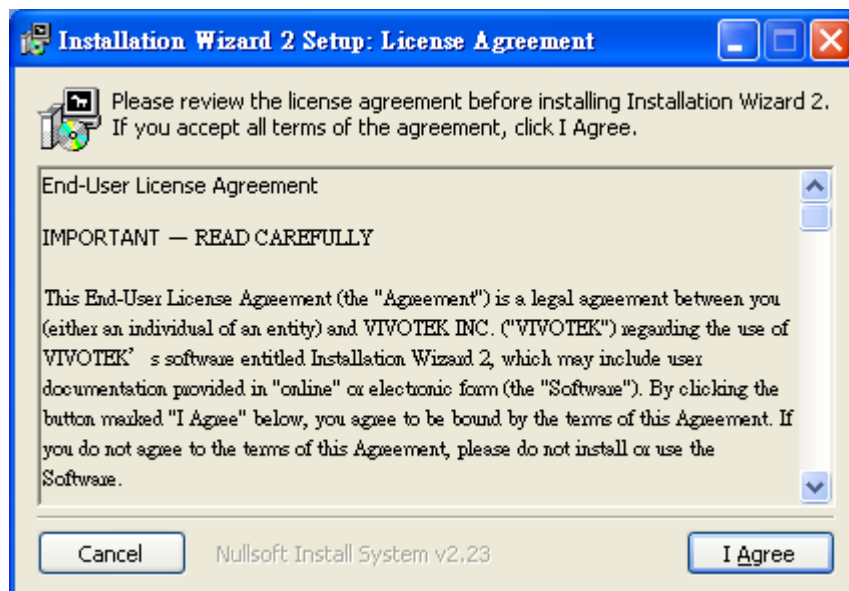


Figure 1-1 Installation Wizard 2 Installation Window

STEP 2: Please read the license agreement first, and then click on “I Agree” to continue the installation process. The install process will go on and then Figure 1-2 will appear. This page is for you to select the additional component you want to install. The component “Create shortcut on desktop” will create a shortcut on the desktop. It is more convenient for you to launch Install Wizard 2. After selecting the components, please click on the “Next” Button to continue.

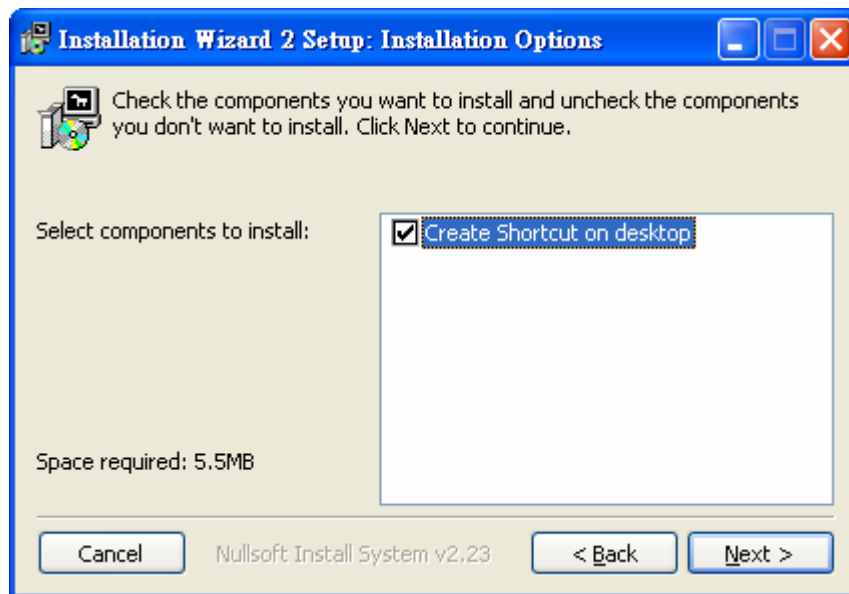


Figure 1-2 Select components to install for the Installation Wizard 2

STEP 3: Select the installation directory for this application software and click on “Install” button. You can also change the installation directory by clicking on “Browse...” button. After the proper directory chose, please click on the “Install” button to continue.

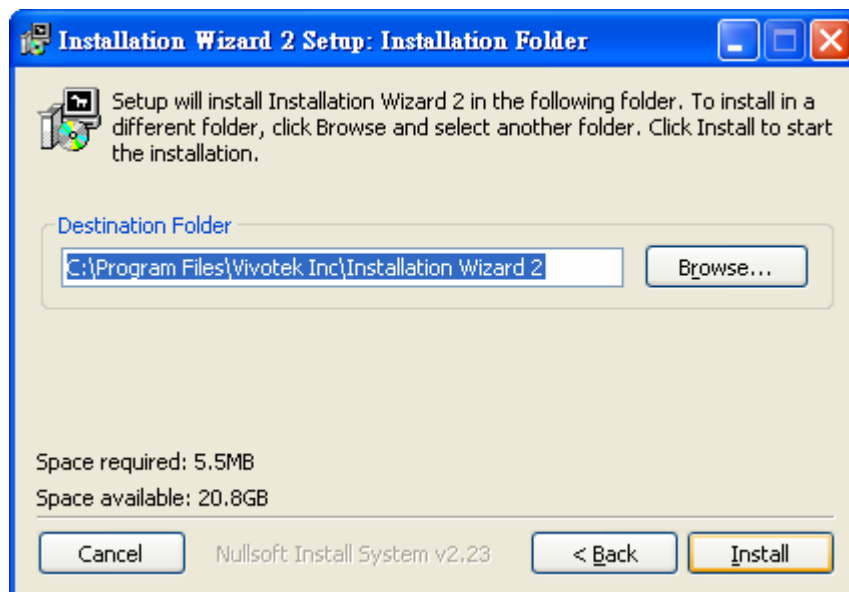


Figure 1-3 Destination Location for Installation

STEP 4: After clicking “Install” button, the install system will install the Installation Wizard 2 to your computer, and a progress bar will display on the dialog. After completed the installation, please click on the “Close” button (Figure 1-4).

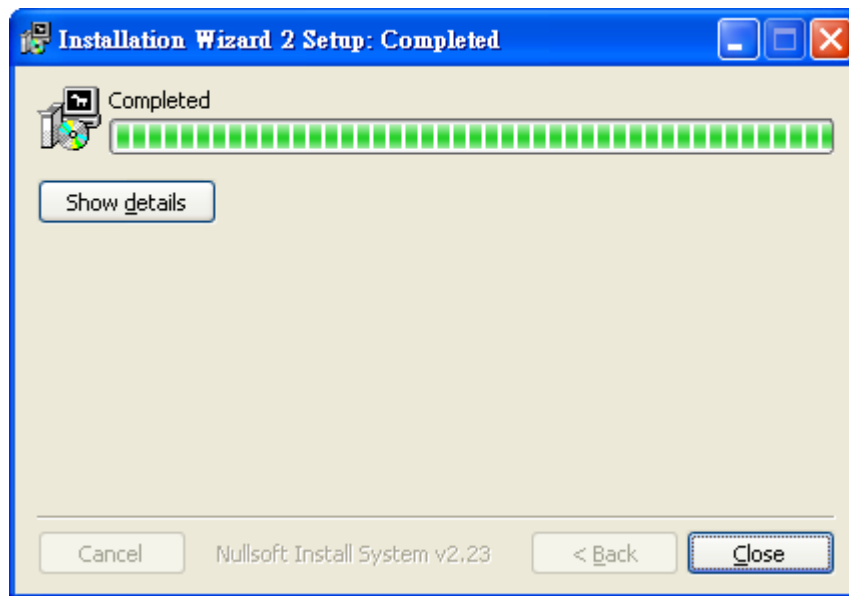


Figure 1-4 Completed

Chapter 2

Using Installation Wizard 2

2.1 User Interface



Figure 2-1 Analyze network environment

The Installation Wizard 2 had distributed the network type into 6 groups, such as *Private fixed IP*, *Private DHCP*, *PPPoE*, *Public fixed IP*, *Public DHCP* and *No*

Connection to Internet. Once you run the Installation Wizard 2, it will do some analysis toward your network environment like Figure 2-1. Then, the dialog window will display your network type after finished the detection. For example, if there is a DHCP server on your LAN, using DHCP function to set up the device may easier than the other option.

Please click on the “**Next**” button to continue the program. After a short searching time, you will see the user interface as shown in Figure 2-2. “**Manual Setup**” button, a “**Refresh Devices**” button and an arrow button on the left panel of your user interface. When you click on the arrow button, you will see more advanced functional buttons: “Access Information”, “**Firmware Upgrade**”, “**Restore Default**” and “**About IW2**”(Figure 2-3). You can select your device by double-clicking it in the device list. The left four buttons (“**Manual Setup**”, “**Access Information**”, “**Firmware Upgrade**”, and “**Restore Default**”) won’t be enabled until you select at least one device.

Installation Wizard 2

Device Selection
Select a device to setup or upgrade

MAC	IP Address	Model
00-02-D1-03-FF-0B	192.168.0.146	VS7100

Please **Double click to link to the selected device.** In the product label of your device first. Then, you can start to link to your device and show the main screen by double clicking the item in the above selection list.

Network Camera **VIVOTEK**
Model NO: PT7137 CE 0560
MAC: 0002D1XXXXXX
FC
Made in Taiwan
This device complies with part 15 of the FCC rules. Operation is subject to the following two conditions:
(1) This device may not cause harmful interference, and
(2) This device must accept any interference received, including interference that may cause undesired operation.

If you are not able to find your device in the above selection list, please make sure all cables are properly connected to your device and then click on the “Refresh Devices” button.

You can find the product label in the rear/bottom part of your device.

Figure 2-2 User interface of Installation Wizard 2

Installation Wizard 2 allows you to setup one device at one time and upgrade multiple devices (of the same model) at the same time. If you selected different models, then the **“Firmware Upgrade”** button would be disabled.

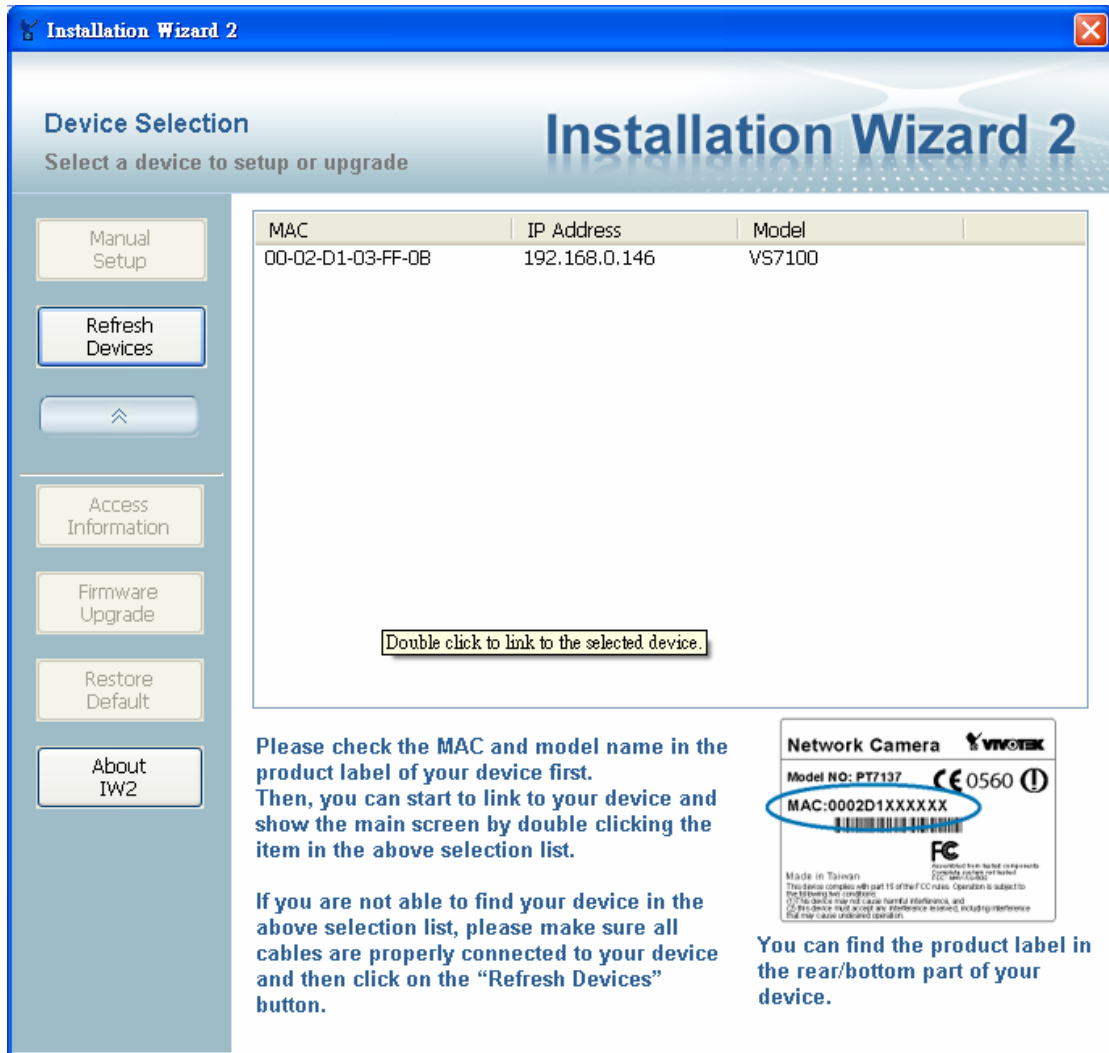
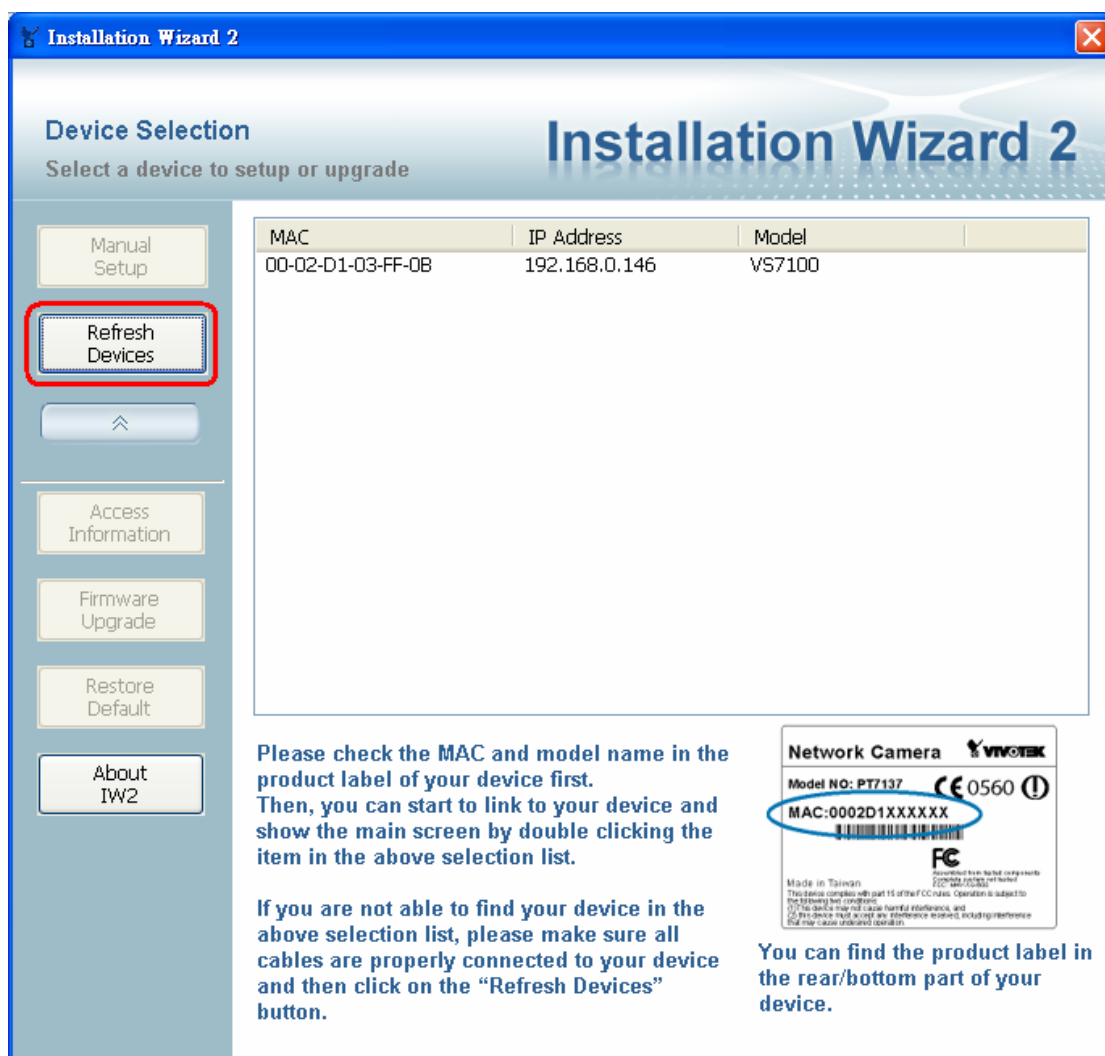


Figure 2-3 User interface of Installation Wizard 2 after clicking on the arrow button

2.1.1 Action buttons



Installation Wizard 2

Device Selection
Select a device to setup or upgrade

Manual Setup

Refresh Devices

Access Information

Firmware Upgrade

Restore Default

About IW2

MAC	IP Address	Model
00-02-D1-03-FF-0B	192.168.0.146	VS7100

Please check the MAC and model name in the product label of your device first. Then, you can start to link to your device and show the main screen by double clicking the item in the above selection list.

If you are not able to find your device in the above selection list, please make sure all cables are properly connected to your device and then click on the “Refresh Devices” button.

Network Camera **VIVOTEK**
Model NO: PT7137 CE 0560
MAC: 0002D1XXXXXX
FC
Made in Taiwan
This device complies with part 15 of the FCC rules. Operation is subject to the following two conditions:
(1) This device may not cause harmful interference, and
(2) this device must accept any interference received, including interference that may cause undesired operation.

You can find the product label in the rear/bottom part of your device.

Figure 2-4 Refresh devices

Clicking on the **“Refresh Devices”** button will refresh the device list (Figure 2-4) and search all devices on the LAN again. Refreshing the device list will take several seconds.

If you want to link to your device, double-clicking it on your device list will lead you to the browser for operating your device.

2.1.2 Function buttons

The screenshot shows the 'Installation Wizard 2' window. On the left, there is a sidebar with several buttons: 'Manual Setup', 'Refresh Devices', 'Access Information', 'Firmware Upgrade', 'Restore Default', and 'About IW2'. The 'Manual Setup', 'Firmware Upgrade', and 'Restore Default' buttons are highlighted with red boxes. The main area displays a table with the following data:

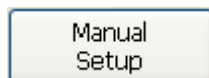
MAC	IP Address	Model
00-02-D1-03-FF-0B	192.168.0.146	VS7100

Below the table, there is a callout box that says: 'Double click to link to the selected device.' To the right of the table, there is a product label for a 'Network Camera' by VIVOTEK. The label includes the model number 'PT7137', the MAC address 'MAC:0002D1XXXXXX', and various certification marks like CE 0560 and FC. Below the label, there is a note: 'You can find the product label in the rear/bottom part of your device.'

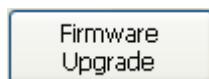
Please check the **MAC and model name** in the product label of your device first. Then, you can start to link to your device and show the main screen by double clicking the item in the above selection list.

If you are not able to find your device in the above selection list, please make sure all cables are properly connected to your device and then click on the "Refresh Devices" button.

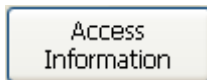
Figure 2-5 Function buttons



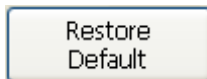
Click on this button to modify the setting of the selected devices. For more detail, please refer to 2.2 Manual Setup.



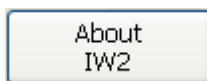
Click on this button to upgrade the firmware of the selected devices. For more detail, please refer to 2.4 Upgrade



Click on this button to get the access information, it will show you the IP Address information, DDNS information, UPnP Port Forwarding information, and PPPoE connecting information. For more detail, please refer to 2.5 Access Information.



Click on this button to restore the selected device to factory default.



Click on this button to get version information of the Installation Wizard 2.

2.2 Manual Setup

When you select one device in the selection list, the “**Manual Setup**” button will be enabled. Click on it to modify the settings of the selected device. After clicked on the “**Manual Setup**” button, Installation Wizard 2 would try to connect to the selected device.

If the authentication is failed, there would be a pop-up dialog window (see Figure 2-6) to ask for correct password. If you failed three times, the Installation Wizard 2 would show you a warning dialog window (Figure 2-7) and abort the connecting to the selected device.

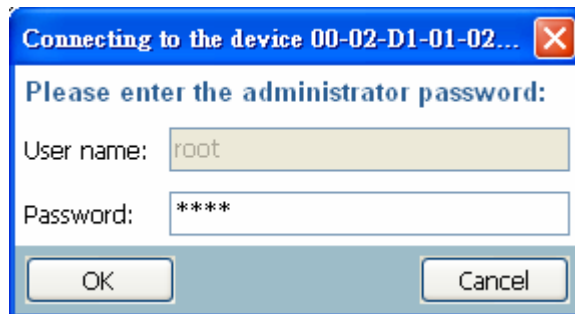


Figure 2-6 Authentication Dialog Window

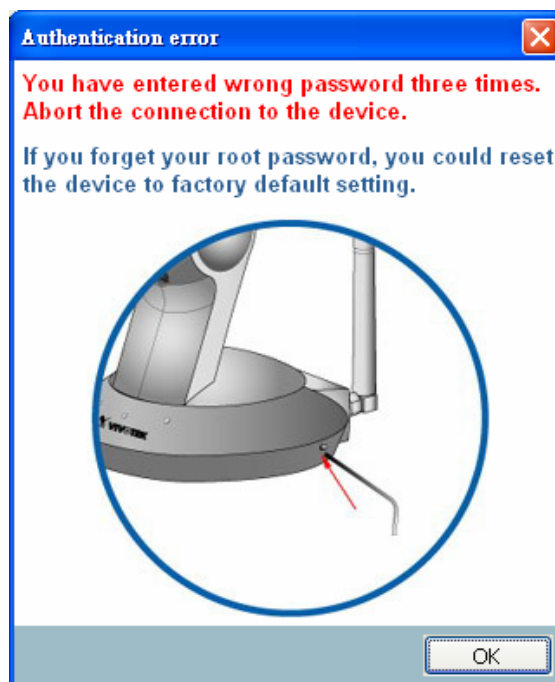


Figure 2-7 Authentication error

2.2.1 System Setting

After connected to the selected device, the Installation wizard 2 will switch to system setting page as shown in Figure 2-8.

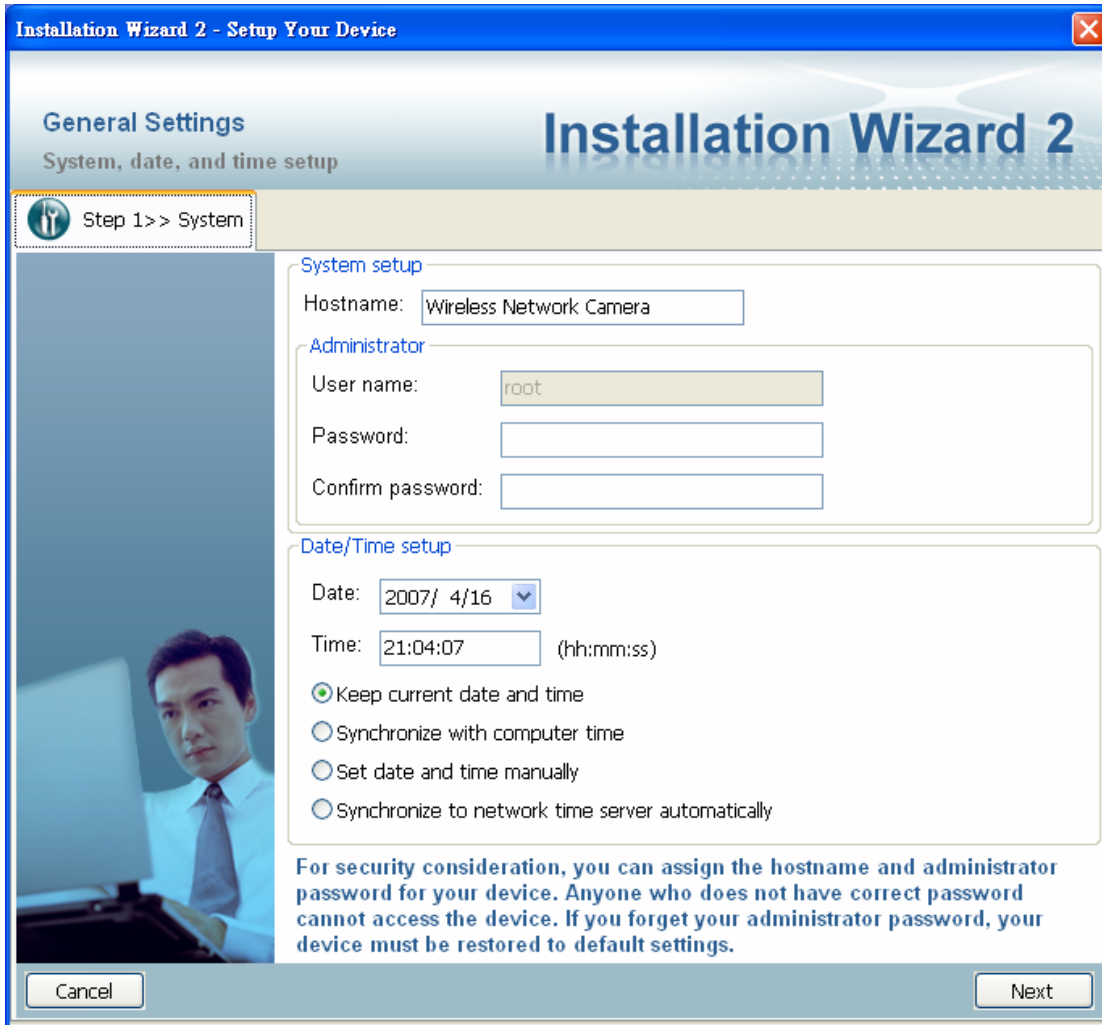
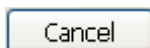
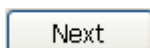


Figure 2-8 System setting page



Click on this button to cancel the setup progress.



Click on this button to keep the present setting and go to the next page.

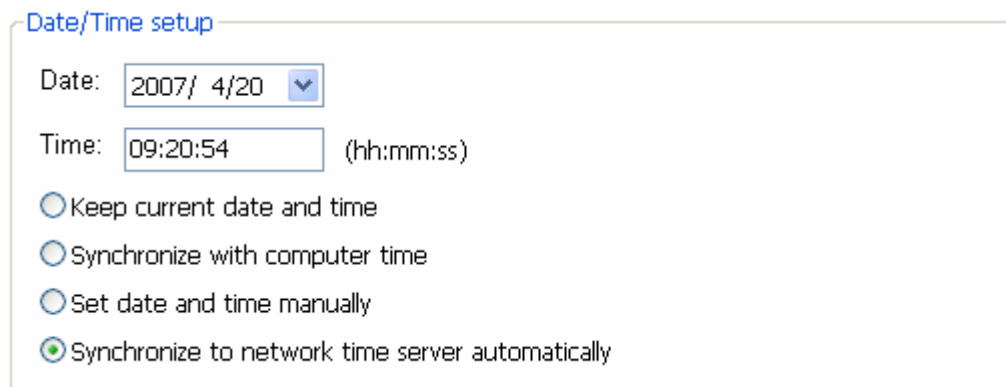
2.2.1.1.1 Change Host Name

The “**Hostname**” is used for the homepage title of main page and is displayed as the title in the video window of the main page. The maximum string length is 40 characters or 20 characters in double-byte-character-systems like Chinese or Japanese. But for some models supported Unicode, the maximum string length depends on the characters you input, and it may less than 20 characters.

2.2.1.1.2 Change root password

To change the administrator’s password, type the new password in both “**Password**” and “**Confirm Password**” text boxes identically. What is typed will be displayed as asterisks for security purposes. The maximum password depends on the server you connected.

2.2.1.1.3 Adjust date and time



Date/Time setup

Date: 2007/ 4/20

Time: 09:20:54 (hh:mm:ss)

Keep current date and time

Synchronize with computer time

Set date and time manually

Synchronize to network time server automatically

Figure 2-9 Date/Time setup

There are three ways to adjust system date and time (Figure 2-9):

1. “**Synchronize with computer time**”: The easiest way is to make device synchronized with your computer time.
2. “**Set date and time manually**”: Set the date and time manually by entering new values. Notice the format in the related field while typing.
3. “**Synchronize to network time server automatically**”: Make device automatically synchronize with timeservers over the Internet every hour.

If you want to keep the current date and time, please choose “**Keep current date and time**”.

2.2.2 Network Setting

The Installation Wizard 2 can help you to setup the network connection with LAN or PPPoE. After you clicked on the “**Next**” button on the System page, the Installation Wizard 2 would lead you to the PPPoE setting page(Figure 2-10). If you want to connect your server to Internet via PPPoE, please click on “**Yes**” to start the PPPoE setting process, or click on “**No**” to invoke the LAN setting.

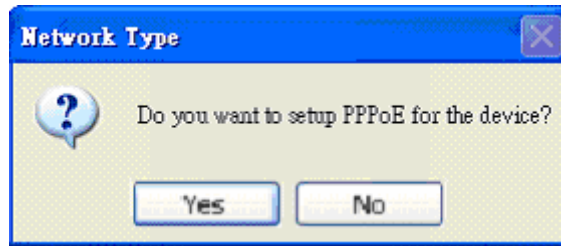
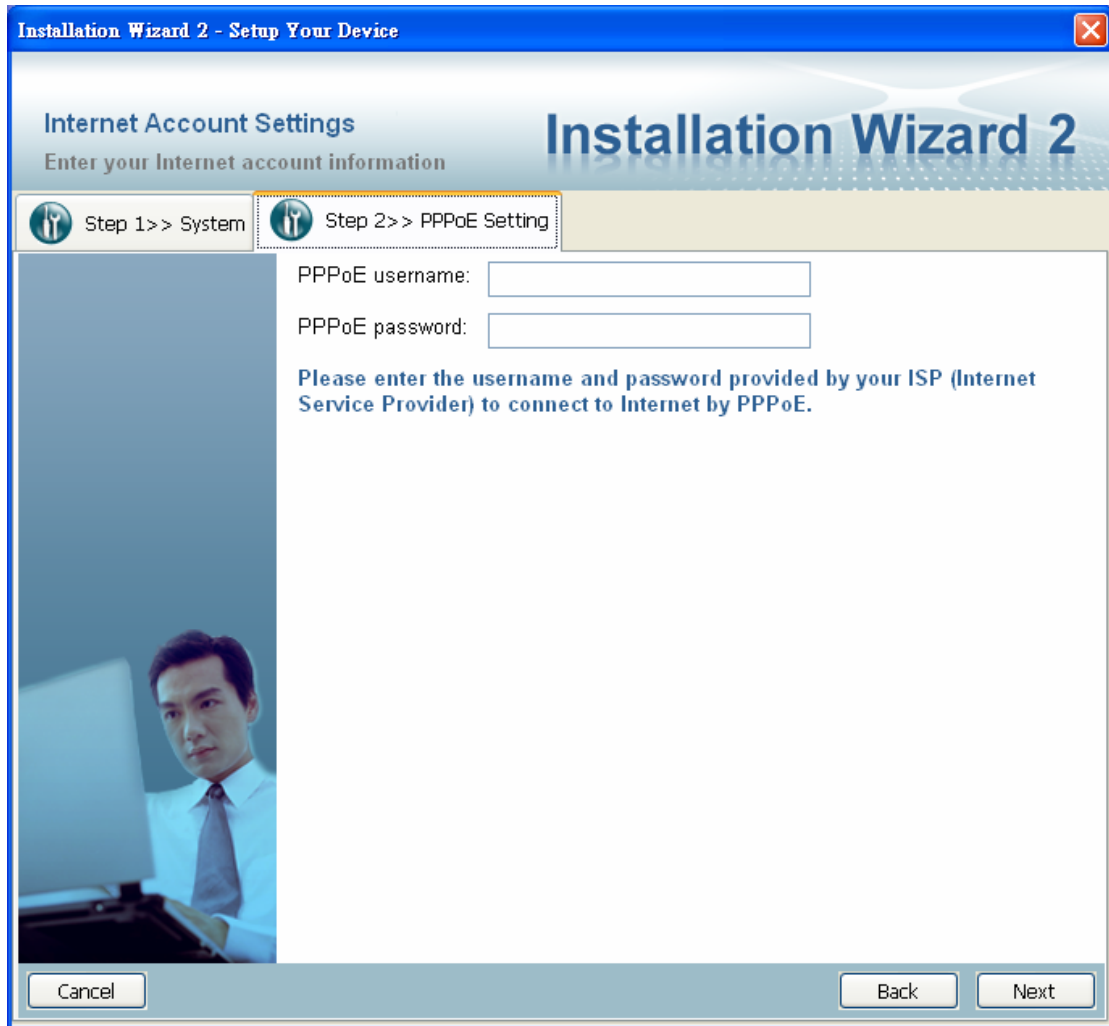


Figure 2-10 Choosing the network type

2.2.2.1.1

PPPoE Setting



Installation Wizard 2 - Setup Your Device

Internet Account Settings
Enter your Internet account information

Installation Wizard 2

Step 1 >> System Step 2 >> PPPoE Setting

PPPoE username:

PPPoE password:

Please enter the username and password provided by your ISP (Internet Service Provider) to connect to Internet by PPPoE.

Cancel Back Next

Figure 2-11 Network setting for PPPoE

If you click on **“Yes”** in the **“Network Type”** dialog window, you will be led to the PPPoE setting page. In this page, you can input the **“PPPoE username”** and **“PPPoE password”** provided by your ISP, and then the server will be set to PPPoE mode rather than LAN mode when the setup is completed. If you don't know the account information, please contact your ISP. After inputting the account information, please click on the **“Next”** button to continue your next step.

2.2.2.1.2 LAN Setting

If you click on “No” in the “Network Type” dialog window, you will be led to the Network setting page. In this page, you can change the server’s IP address, subnet mask, default gateway, primary DNS server, secondary DNS and DHCP server. Please refer to Figure 2-12.

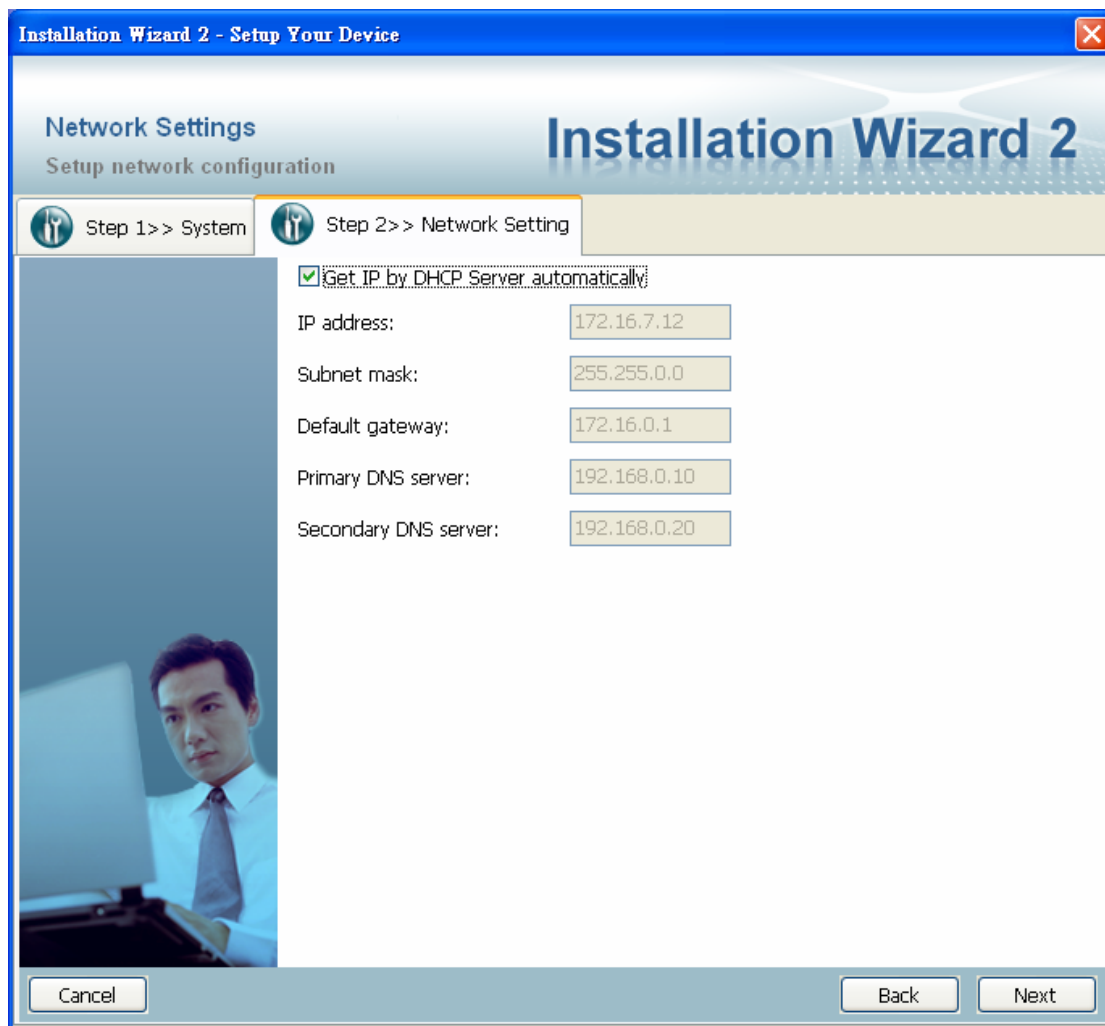


Figure 2-12 Network Setting for LAN

You could set up the network with DHCP or fixed IP:

1. **DHCP:** Check the "**Get IP by DHCP Server automatically**" will force the device to renew its IP address whenever it reboots, and the related network configuration is provided by the DHCP server.
2. **Fixed IP:** If you want the device to use a fixed IP, please uncheck the "**Get IP by DHCP Server automatically**" checkbox and assign a valid IP address, subnet mask, default gateway and DNS server for the device.

2.2.3 Ports Setting

If your device is located behind the router (such as private fixed IP, private DHCP) and you want to access it through the LAN, your router must be configured first. The ports setting page (Figure 2-13) will appear after you click on the “Next” button of Network Setting page. The UPnP technology will configure your router automatically, but if your router doesn’t support UPnP, you need to configure the port numbers manually. The Installation Wizard 2 will detect whether your router support UPnP or not. If your router support UPnP, Installation wizard 2 will choose the “UPnP port forwarding” for you, otherwise it will choose the “Manual” mode and you have to inspect those port numbers and make the port mapping on your router manually.



Figure 2-13 UPnP Port Forwarding setting

2.2.4 DDNS Setting

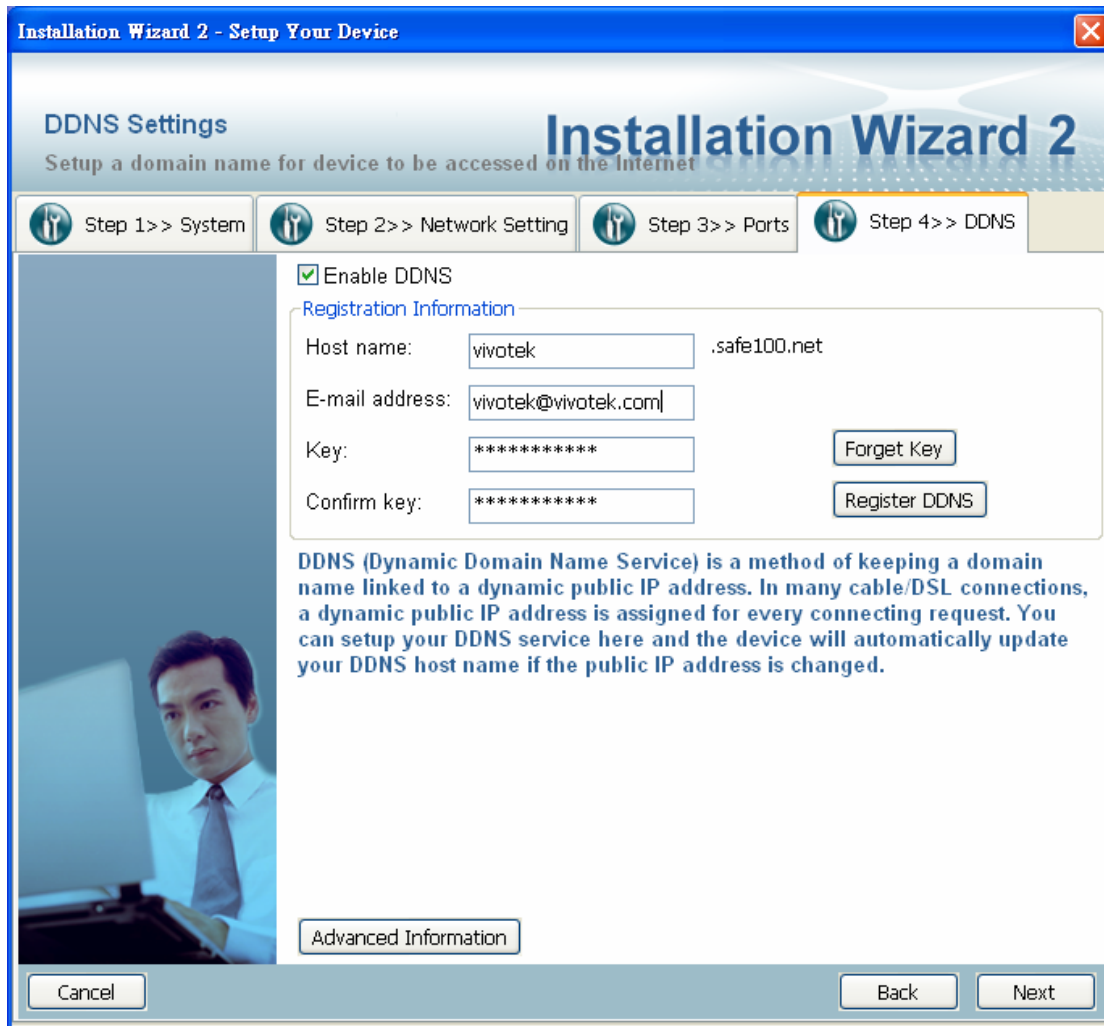


Figure 2-14 DDNS Setting

The DDNS (Dynamic Domain Name Service) is a method of keeping a domain name mapping to a dynamic public IP address. In many cable/DSL connections, a dynamic public IP address is assigned for every connecting request. After you setup your DDNS service, and then the device would automatically update your connect information if the public IP address had been changed.

You have to enter the “**Host name**”, “**E-Mail address**”, “**Key**” and “**Confirm key**” to initiate the DDNS. The “**Host name**” should be 1~64 character(s), and the “**E-Mail address**” will receive some DDNS information, please input your e-mail address carefully.

If you have a fixed public IP, or you don't plan to access the camera on LAN, you may uncheck the **“Enable DDNS”** to disable the DDNS function.

Forget Key

If you forgot your DDNS key (password), you could input the Hostname and E-mail address first, and then click on the “Forget Key” button. The key will be sent to your e-mail box by the DDNS provider automatically.

Register DDNS

If the hostname haven't been registered before, you should click on the “Register DDNS” to register the hostname. If you didn't register the DDNS (now and before), it might not work properly.

The DDNS provider usually has a minimal time interval of each registration, for Safe100.net, it is about 10 minutes.

Advanced Information

If you want to use another DDNS rather than safe100.net, you can click on the “Advanced Information” to change the DDNS provider. There are two service providers in the advanced setting, one is saf100.net and another is Custom DDNS server. If you choose the Custom DDNS server, you have to enter the Server address and the DDNS domain name, and you may refer to Figure 2-15.

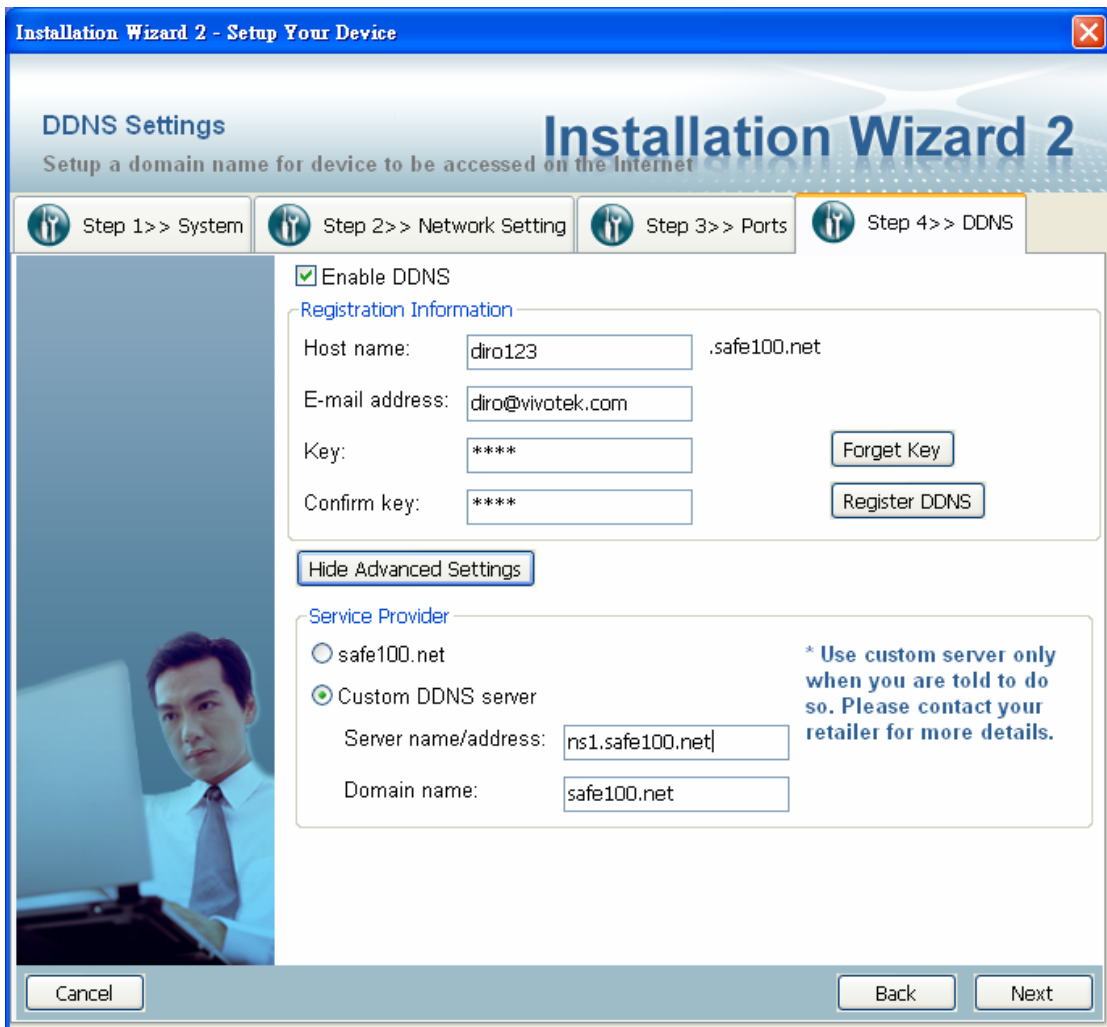


Figure 2-15 Advanced DDNS Setting

2.2.5 Mobile Access

After finished the DDNS setting and click on the Next button. If your device supports mobile viewer and you want to access the device by mobile phone, you can enable the “Mobile Access” (Figure 2-16) by clicking on the Yes button. The Installation Wizard 2 will do some setting for mobile viewing toward the device:

1. **Video:** The video codec will be set to MPEG-4, and the resolution will be set to 176x144 pixels.
2. **Audio:** The audio codec will be set to AAC.

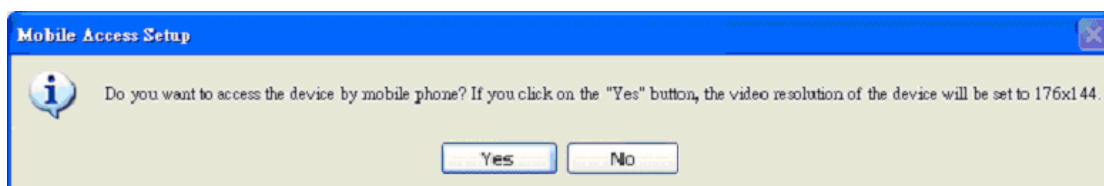


Figure 2-16 Mobile Access

2.2.6 Wireless Setting

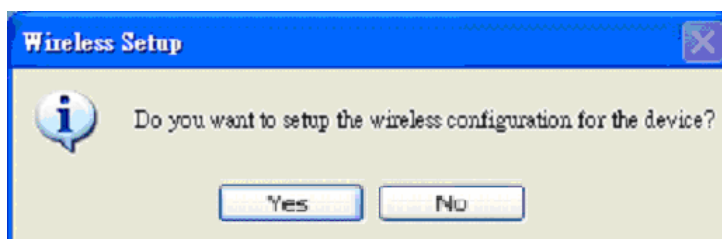


Figure 2-17 Ask if you want to setup the wireless configuration

This above page(Figure 2-17) will show up only when you select the model with wireless support. It allows you to configure the wireless setting. Please refer to Figure 2-18.

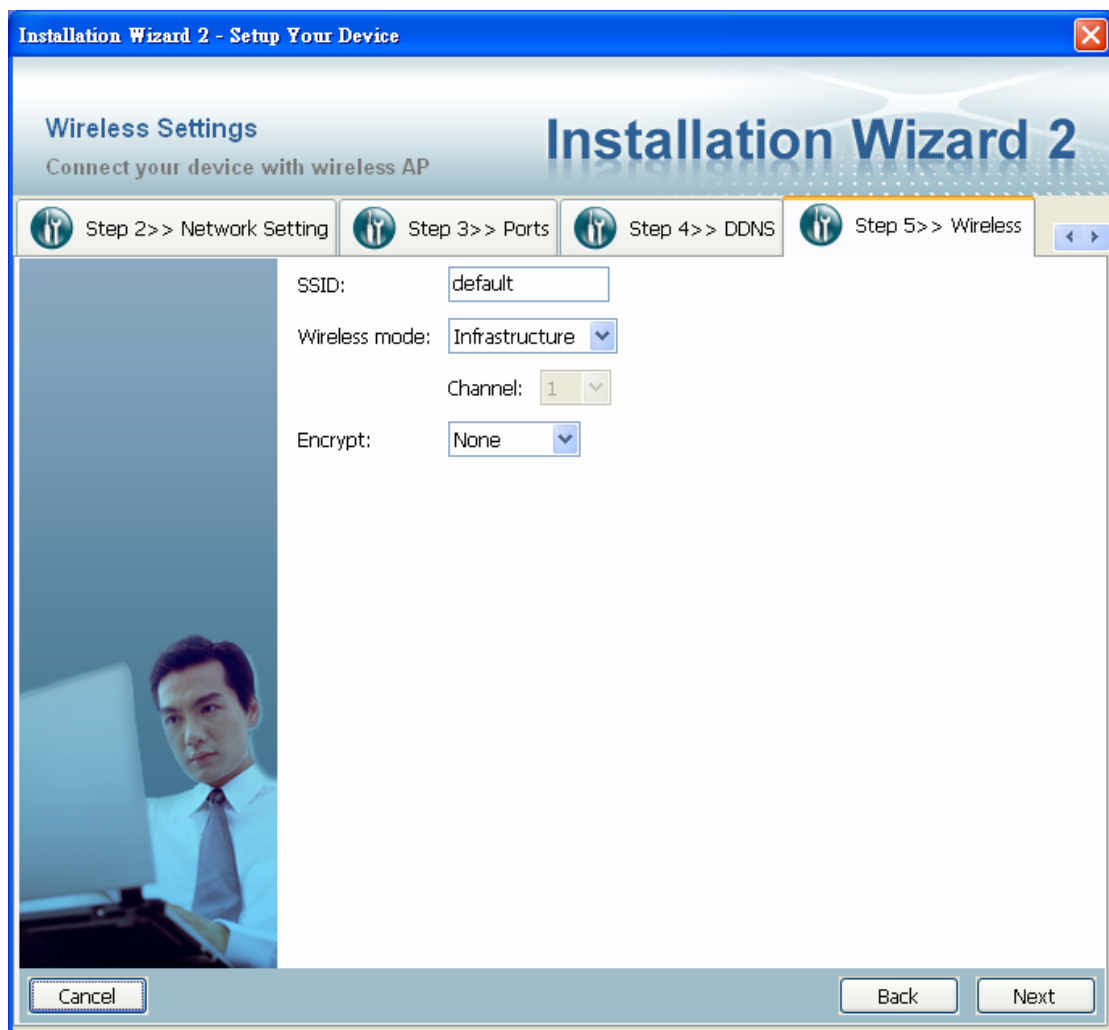


Figure 2-18 Wireless Setting

2.2.6.1.1 Basic Settings

“**SSID**” (Service Set Identifier), it is a name which identified a wireless network. Access Points and wireless clients attempting to connect to a specific WLAN (Wireless Local Area Network) must use the same SSID. The default setting is *default*. *Note: The maximum length of SSID is 32 single-byte characters.*

“**Wireless mode**” Click on the pull-down menu, and you can see the following options:

1. “**Infrastructure**” Make the device connect to the WLAN via an Access Point (The default setting). “**Ad-Hoc**” Make the device connect directly to a host equipped with a wireless adapter in peer-to-peer mode.
2. “**Channel**” While in infrastructure mode, the channel will be set automatically to

the same channel setting of the selected Access Point. While in Ad-Hoc mode, the channel must be set to the same channel for each wireless adapter. The default channel setting depends on the installed region.

2.2.6.1.2 Data Encryption

“Encrypt” You can choose the encryption type you want in the pull-down menu, there are three items: None, WEP and WPA-PSK.

2.2.6.1.3 None

If your wireless environment doesn't need encryption, please choose “None”.

2.2.6.1.4 WEP

If your encryption is WEP, please choose the **“WEP”** in the Encrypt pull-down menu (Figure 2-19), and you have to enter the following information.

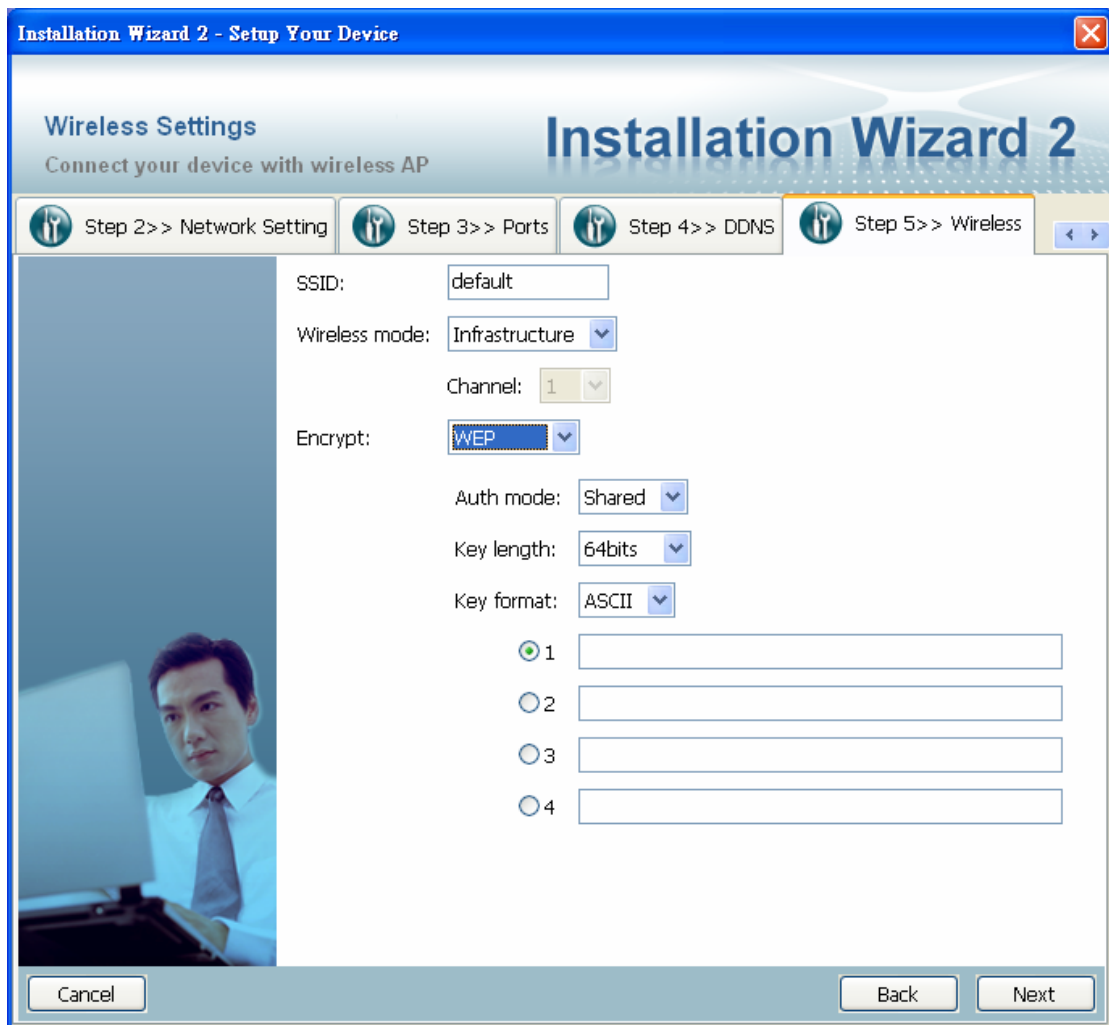


Figure 2-19 WEP Setting page

“Auth. Mode” Choose one of the following modes,

“Shared” – allows communication only with other devices on identical WEP settings.

“Open” – communicates the key across the network.

“Key length”: The administrator can select the key length among 64 or 128 bits. The selection will depend on the selected device.

“Key format”: Hexadecimal or ASCII.

“HEX” digits consist of the numbers 0~9 and the letters A-F.

“ASCII” is a code for representing English letters as numbers from 0-127 except “, ≤, ≥ and space characters that are reserved.

“Key”: Enter a key in either hexadecimal or ASCII format. When selecting different key length, acceptable input length is listed as following:

64 bits key length: 10 Hex digits or 5 characters.

128 bits key length: 26 Hex digits or 13 characters.

2.2.6.1.5 WPA-PSK

If your encryption type is WPA, please choose the **“WPA-PSK”**. And you have to enter the pre-shared key and choose a proper encryption algorithm (TKIP, AES)

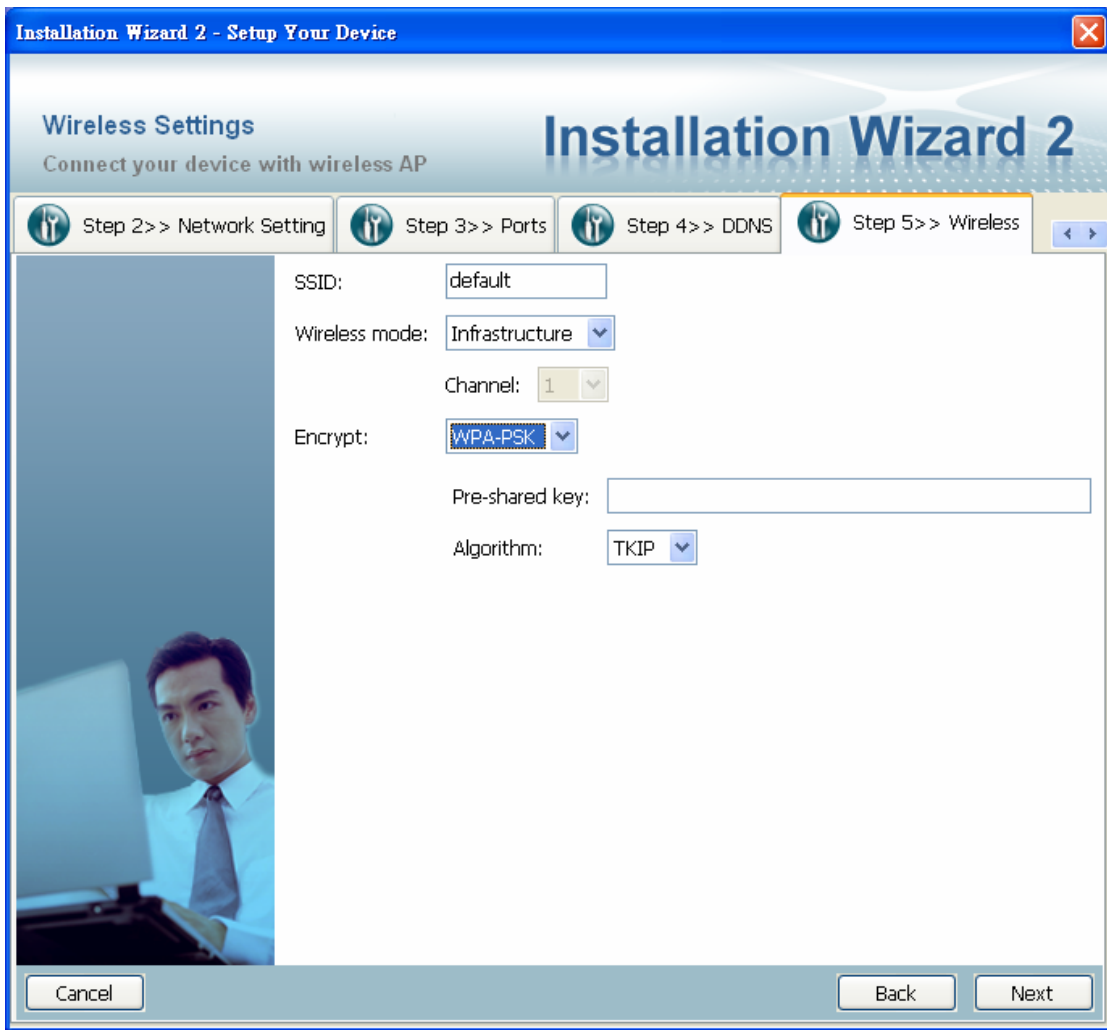


Figure 2-20 WPA-PSK Setting page

2.2.7 Apply to selected device

After configuring all the settings, the apply page will show up (Figure 2-21). Click on **“Apply”** button to apply the changes to the selected device or click on **“Back”** button to go back to the previous page and modify the setting again.



Figure 2-21 Apply page

When you click on the **“Apply”**, it will start to update your settings to server. When it completed, it will show the access information of this server for you. Please refer to 2.3 Access Information for the details.

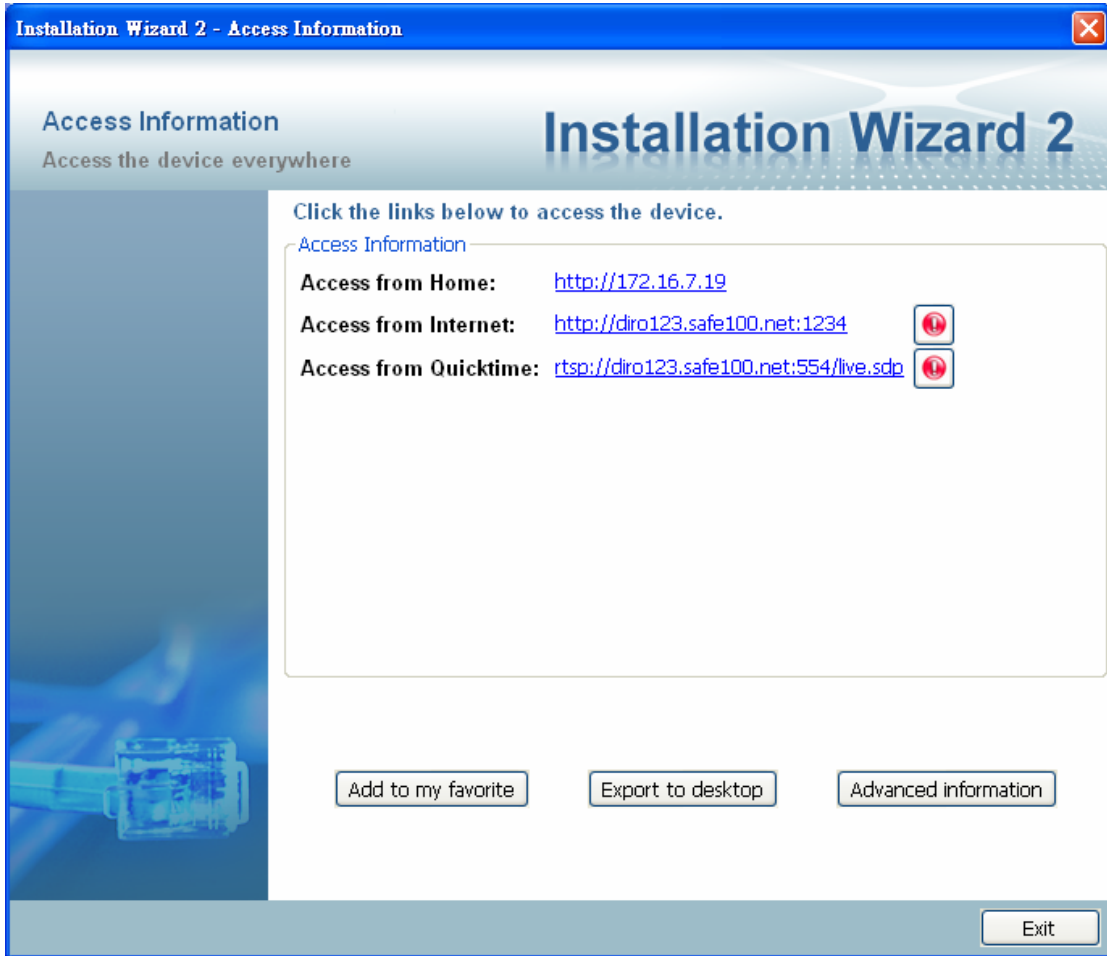
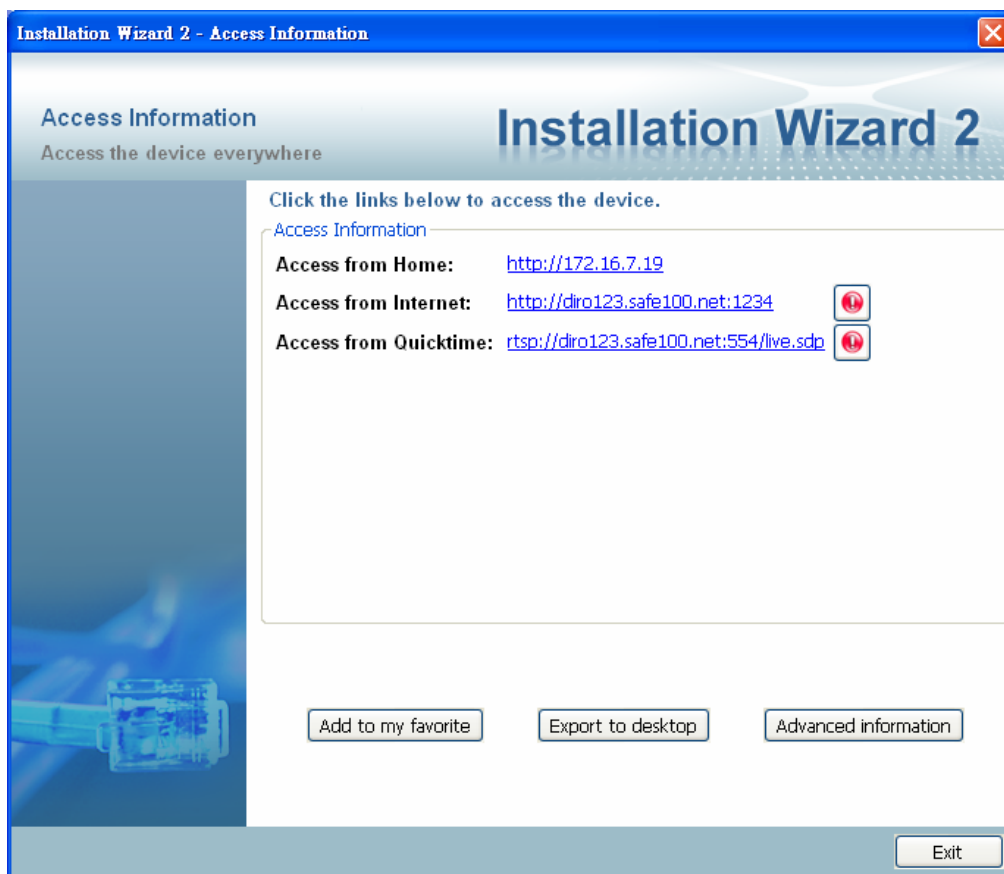


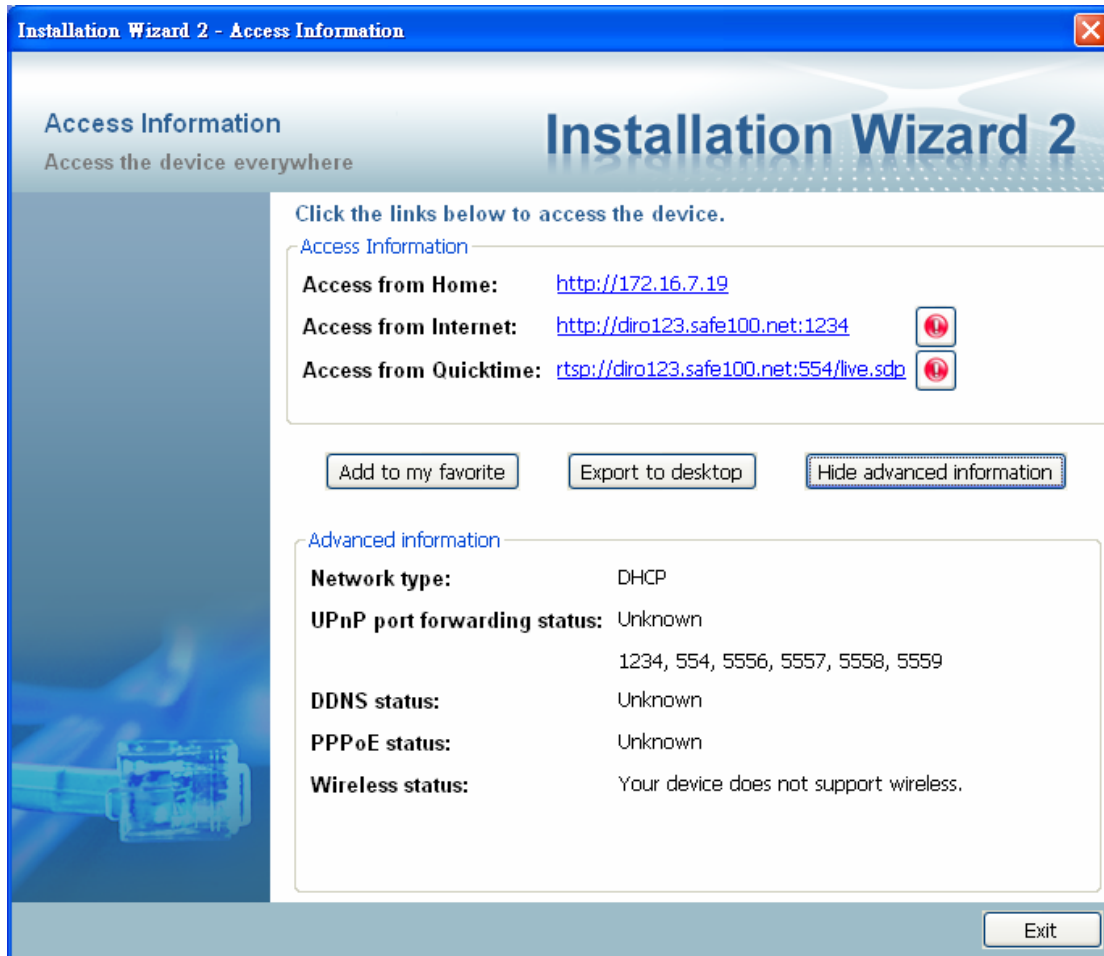
Figure 2-22 Access Information

2.3 Access Information



The access information page shows you all the information about how to access the server. There are three access types:

1. **Access from Home:** If you access the server from home, you could use the domain name (or IP address) and port (if the http port is not 80) to connect the server.
2. **Access from Internet:** If you access the server from Internet, or you want to share the server with your family or friends, you should use this IP Address (or domain name) and port. If the server is behind the router, it will check whether the UPnP or port mapping is enabled. If the UPnP and port mapping is failed, it will show a “Warning Icon” after the link. If the “Warning Icon” appears after the link, the server won’t be able to access from Internet.
3. **Access from Quicktime:** If your server supports the RTSP, A link will be displayed for you to access from QuickTime or other devices supported RTSP (such as 3GPP Mobile Phone). You can connect to the server via this link.



In the access information page, you can click on the “Advanced Information” to get more information.

1. **Network type:** The network type of server, it could be PPPoE, DHCP or Fixed IP
2. **UPnP status:** The UPnP status, it could be Disabled, Success, Failed
3. **DDNS status:** The DDNS status, it could be Disabled, Success, Failed
4. **PPPoE status:** The PPPoE status, it could be Disabled, Success, Failed
5. **Wireless status:** If your device supports wireless, the status will be Connected or Disconnected. If the device doesn’t support wireless, it will display an unsupported message.

Some server don’t have certain fields in the advanced information, it may show “Unknown” in some status fields.

There are “Add to my favorite” and “Export to desktop” buttons on this page:

1. “**Add to my favorite**” is for you to add the Access Information to your bookmark of browser. It helps you to access the server easier.

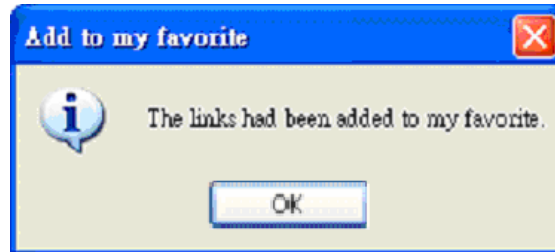


Figure 2-23 Add to my favorite message

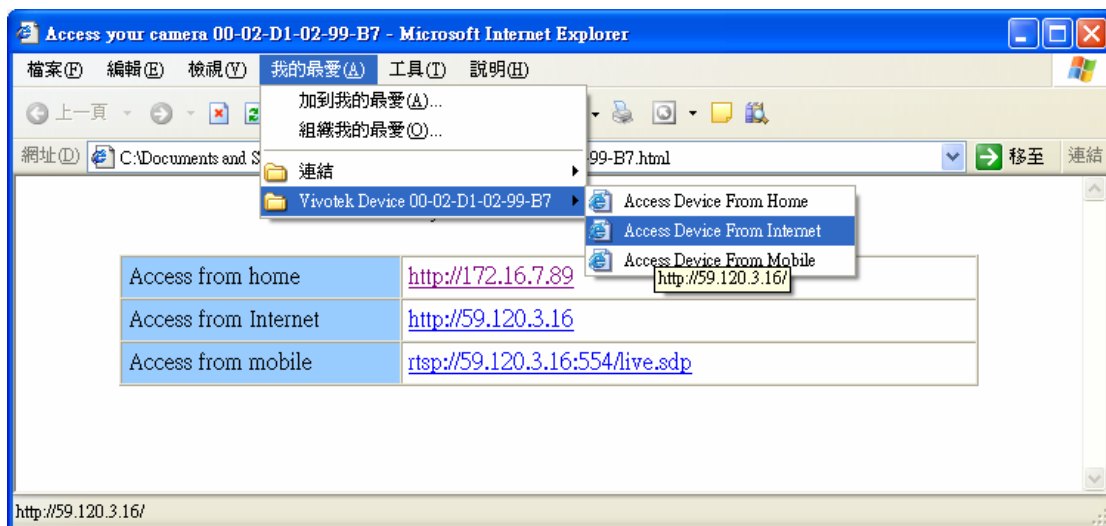


Figure 2-24 the bookmark of your browser after added the link to your favorite

2. “**Export to desktop**” will generate an html file on your desktop, and you can open this file by your browser and see the access information of this server.

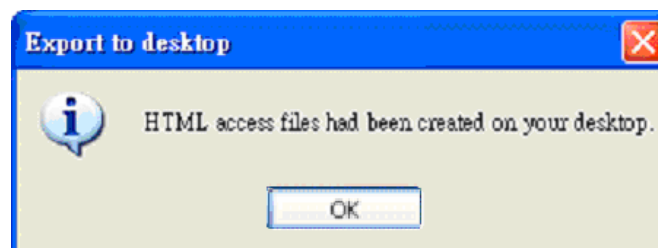


Figure 2-25 Generated html file message

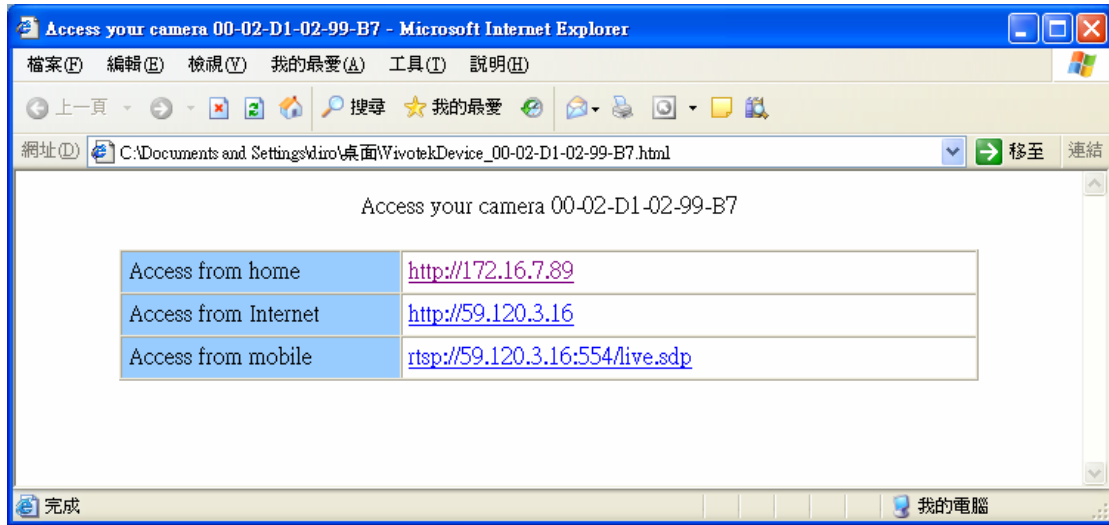


Figure 2-26 html file generated in browser

2.4 Upgrade

When you select one device or multiple devices (of the same model), the **“Firmware Upgrade”** button will be enabled. Click on it to upgrade the firmware of the selected device(s) (Figure 2-27). After click on the **“Firmware Upgrade”** button, Installation Wizard 2 will try to connect the selected device(s) and lead you to the firmware upgrade page.



Installation Wizard 2

Device Selection
Select a device to setup or upgrade



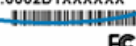

Manual Setup
Refresh Devices
Access Information
Firmware Upgrade
Restore Default
About IW2

MAC	IP Address	Model
00-02-D1-03-FF-0B	192.168.0.146	VS7100

Double click to link to the selected device.

Please check the MAC and model name in the product label of your device first. Then, you can start to link to your device and show the main screen by double clicking the item in the above selection list.

If you are not able to find your device in the above selection list, please make sure all cables are properly connected to your device and then click on the “Refresh Devices” button.

Network Camera 
Model NO: PT7137  0560 
MAC: 0002D1XXXXXX


Made in Taiwan
This device complies with part 15 of the FCC rules. Operation is subject to the following two conditions:
1) This device may not cause harmful interference, and
2) This device must accept any interference received, including interference that may cause undesired operation.

You can find the product label in the rear/bottom part of your device.

Figure 2-27 Click on the “Firmware Upgrade”

2.4.1 Device Information

After connected to the selected device(s), it would display as shown in Figure 2-28. If you select more than one device, then the device information will show all the selected devices (see Figure 2-29). You can switch to the server info by click on the tab control.

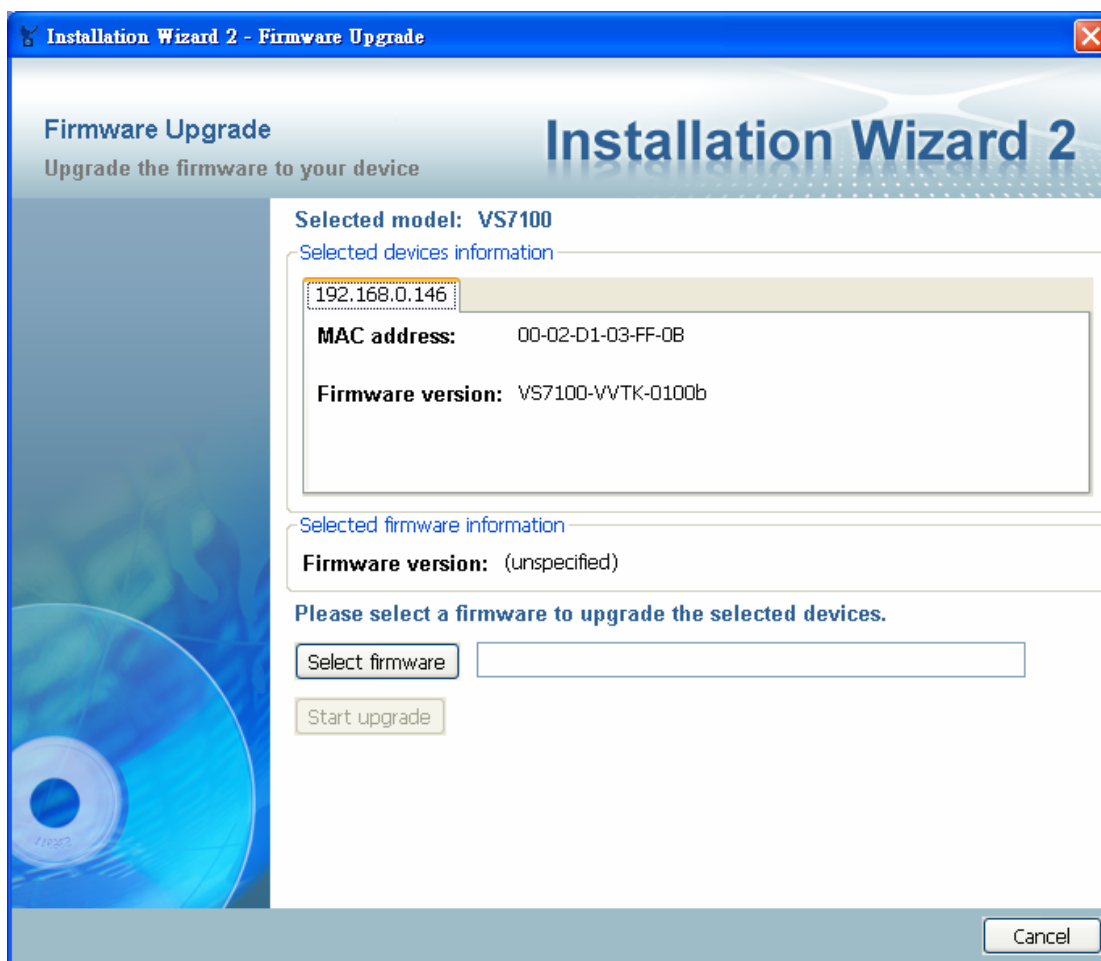


Figure 2-28 Device information

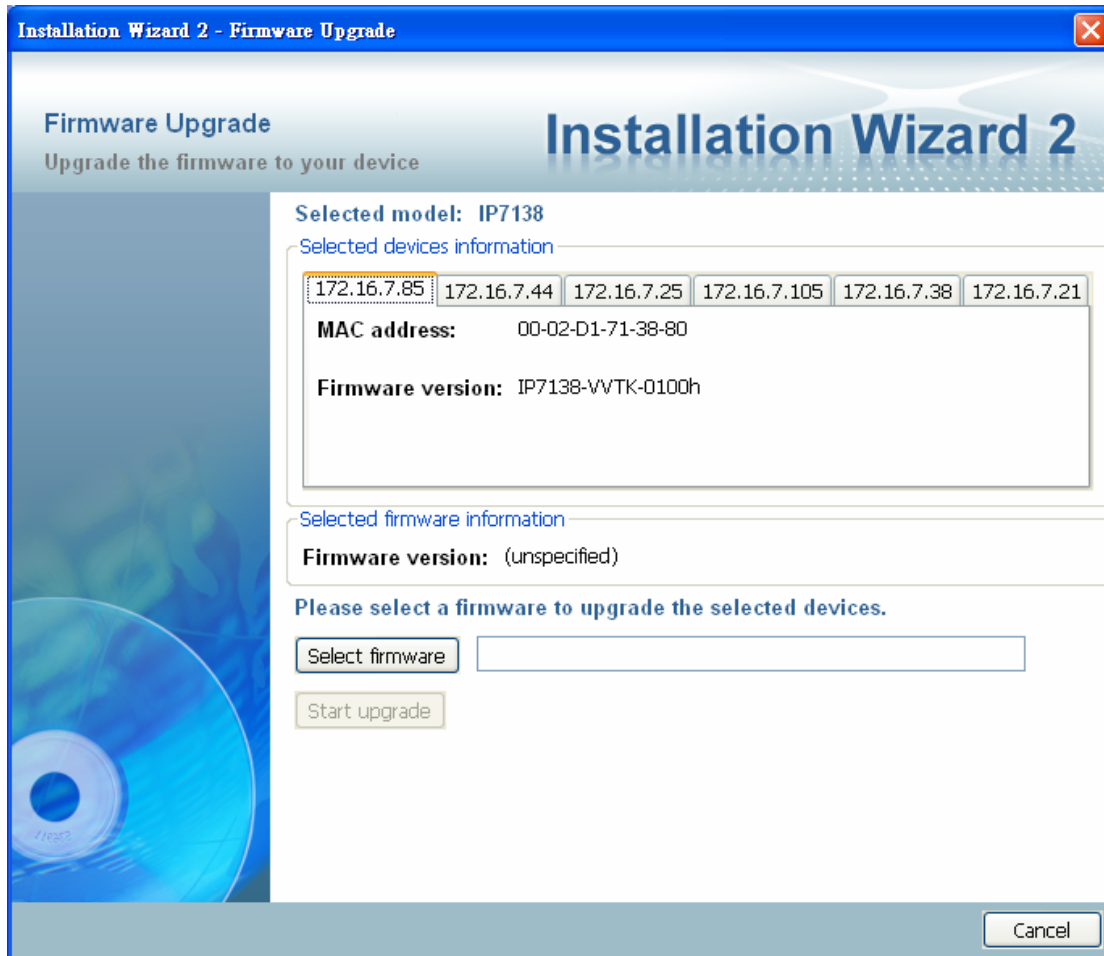


Figure 2-29 Multiple devices information

2.4.2 Firmware Information

The selected firmware information will show the information about the file that you selected.

- **Firmware version:** The version number of the selected firmware.

2.4.3 Select Firmware

You can use the “**Select firmware**” button to browse the file that you want upgrade onto the selected device(s) (Figure 2-30). After selected the file, Installation Wizard 2 will check whether the file you selected is correct. If it’s the correct version, then the package information will display the information about the file and enable the “**Start Upgrade**” button. Therefore you can click on the button to upgrade the firmware. If not, then it will be a pop-up warning message (Figure 2-32).

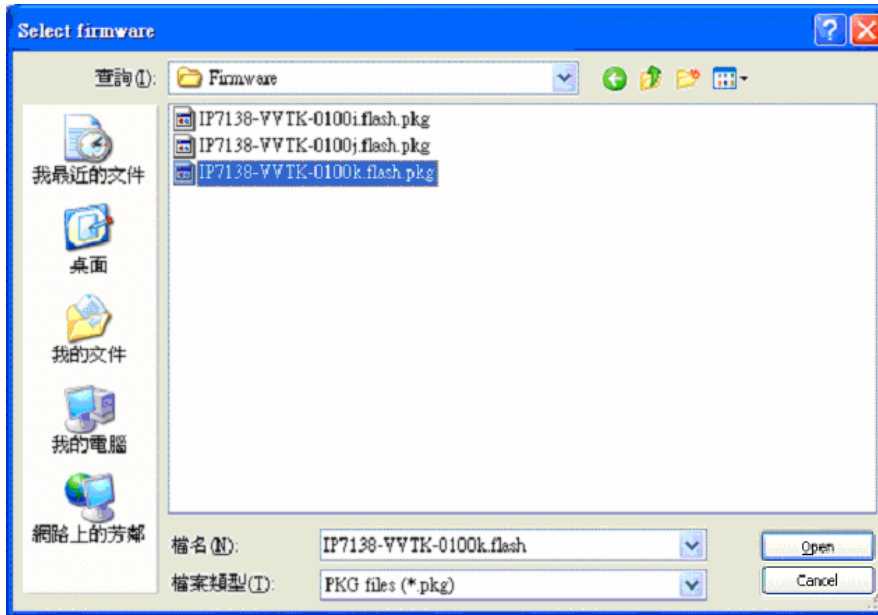


Figure 2-30 Select firmware

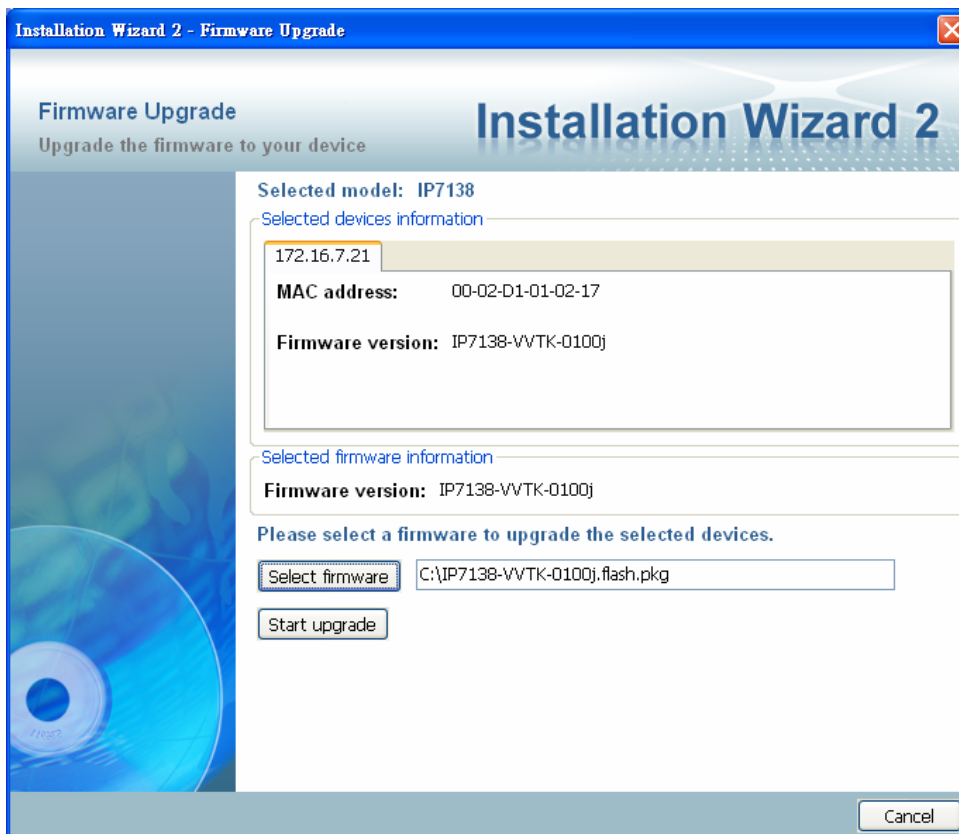


Figure 2-31 Firmware Information



Figure 2-32 Warning message for unmatched firmware

2.4.4 Start Upgrade

Clicking on the “**Start Upgrade**” button to upgrade the firmware of the selected device(s), and it will be a pop-up dialog window to show the progress of the upgrading process (Figure 2-33). Usually, it will take about 5 to 10 minutes to finish the firmware upgrading. It depends on your server model and network bandwidth. We recommend you do the upgrade process in wired LAN environment rather than PPPoE or wireless environment.

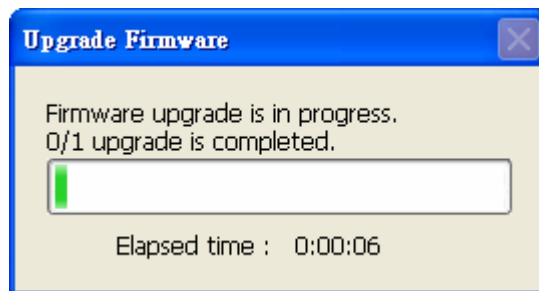


Figure 2-33 Update progress

After the upgrade process had been done, you could see the dialog window as below (Figure 2-34). Please click on the button “**OK**” to finish it.

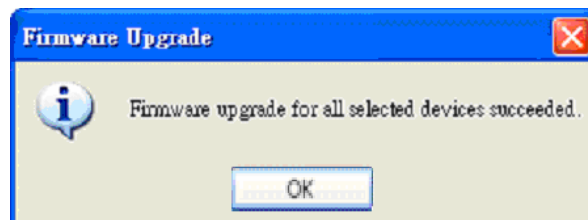


Figure 2-34 Upgrade Done