

**Baces3D plug-in for  
Rhinceros 4**

# **Installation manual**

Rev2



## Index

---

<i>Introduction</i>	3
<i>Connecting the arm to PC</i>	3
<i>Plug-in Installation</i>	3
<i>Using the measure arm</i>	4
<i>Software command for the digitizing</i>	7

Last update: 28 March 2013

This manual is the property of FriulROBOT S.r.l. Said document can be copied only if authorised by FriulROBOT S.r.l..  
FriulROBOT S.r.l. reserves the right to make changes at any time without prior notice.

## Introduction

---

The Baces3D.rhp allows the connection of the arm of measure Baces3D to the software Rhinoceros version 4.

The reading of the present manual provides a help to the configuration, the connection and the use of the arm of measure Baces3D as digitizer for Rhinoceros.

## Connecting the arm to PC

---

Install and connect the arm Baces3D to the computer as described in the Baces3D user manual. Turn on the device.

## Plug-in Installation

---

To install the Baces3D Rhinoceros plug-in, run the relative Install.

Example: ***Baces3D\_Rhino4 Win32 Install 4.0.1.0.exe***

Make sure to use the right version.



If the automatic installation doesn't work, use the manually procedure:

To use the arm of measure Baces3D with Rhinoceros is necessary to copy the following files from:

Baces3D.rhp	Installation CD
Baces.dll	: <i>Program files\Baces3D\Baces.dll</i>

Copy the files in the following position: *\Program files\ Rhinoceros 4.0\ Plug-ins\*

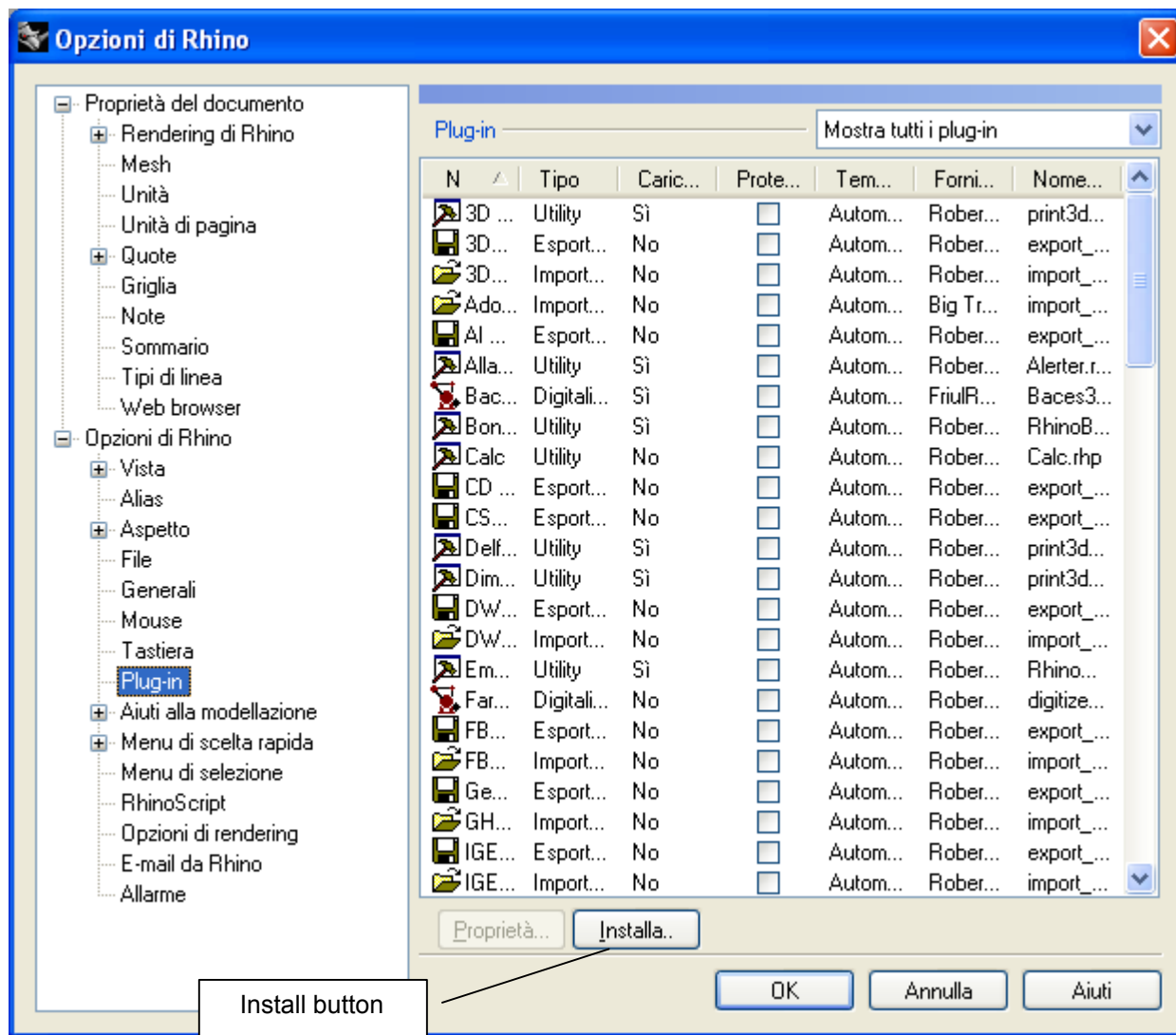
This is the standard installation directory for Rhinoceros 4. Change the path if this is different.

Is possible also to create a “*Baces3D*” folder on the *\Plug-ins* directory, to copy inside the two files. This to avoid confusion with the other plug-ins installations.

## Using the measure arm

Run Rhinoceros 4.0 software.

From menù Tools select Options.... Click the **Install** button.

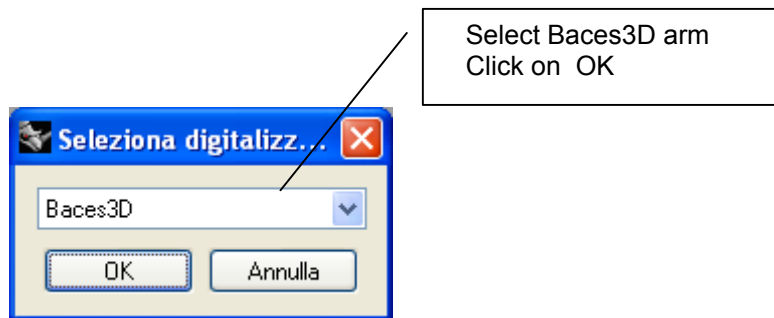


In **Load Plug-in dialog** select Baces3D.rhp file. Click the **Open** button.

Close the **Option** dialog..

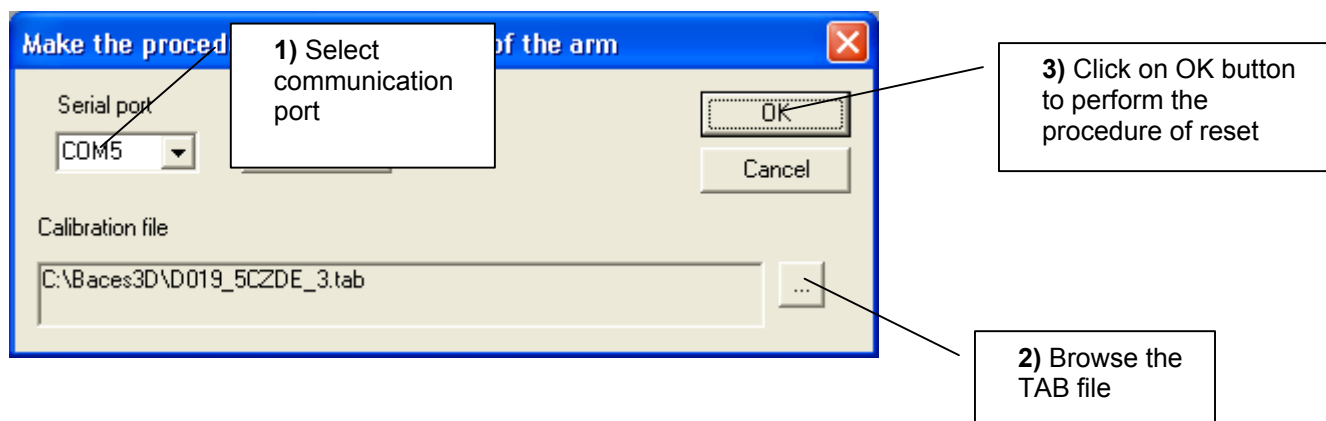
From Tools menù select 3D Digitizer -> Connect.

In the dialog select the Baces3D digitizer.



For the next connections, the Baces3D plug-in will automatically be selected.

Selected the right plug-in, will be showed the Reset Dialog.



- To the first installation of the Plug-in is necessary the selection of the COM port and the file of calibration related to the arm in use.
- If the arm is a USB version is not necessary the selection of the serial port.
- You can find the tab calibration file in the standard folder:  
**XP ->** \Documents and Settings\All Users\Application Data\FriulROBOT\Calibration  
**Vista / W7 ->** \ProgramData\FriulROBOT \Calibration

Select the **OK** button and effect the resetting procedure for the arm (see user manual).

## Software command for the digitizing

---

Use the On-line help of Rhinoceros (key F1 -> Digitizing) to read the information related to the software commands for use the arm of measure Baces3D like digitizer.



Attention: in Rhino with the term “Calibrate” is defined the procedure of alignment of the object with the coordinate system in Rhinoceros.