SGH-B110

User's Guide

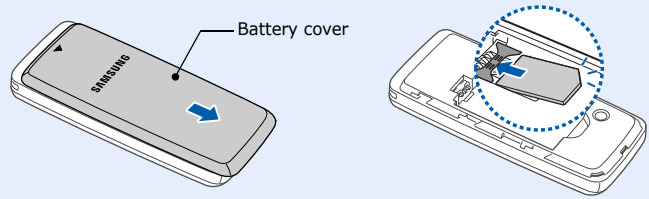
Some of the contents in this guide may differ from your phone depending on the software of the phone or your service provider.

World Wide Web
http://www.samsungmobile.com

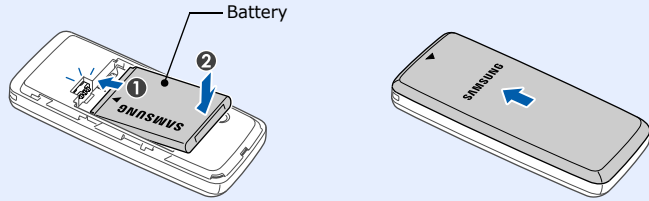
Printed in Korea
Code No.:GH68-17912A
English (SEA). 02/2008. Rev. 1.0

Installing the SIM card and battery

1.Remove the battery cover and insert the SIM card.

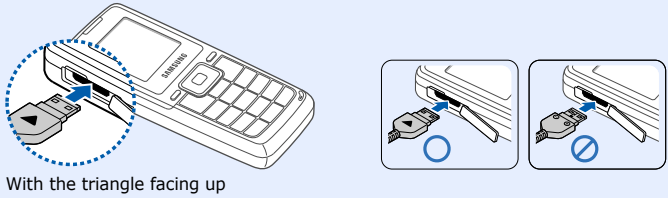


2.Install the battery and reattach the cover.



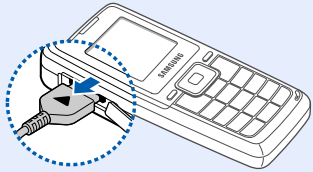
Charging the battery

1.Plug the supplied travel adapter.



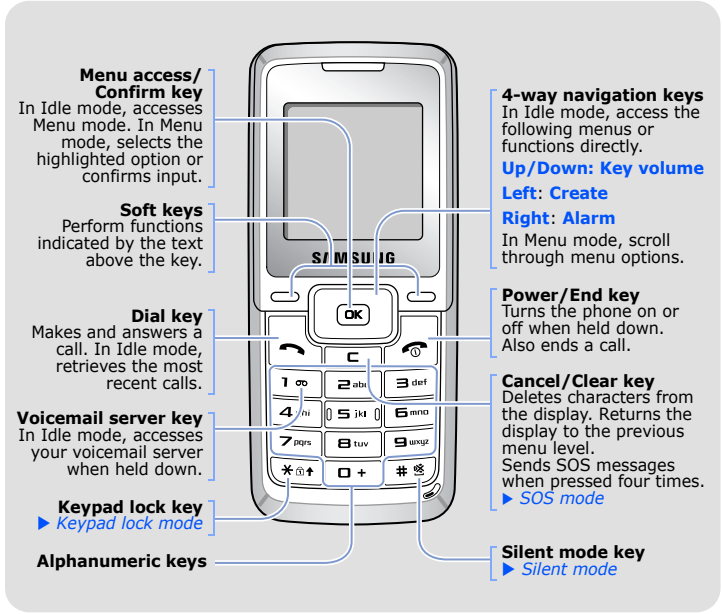
Note: When you plug in the travel adapter, the charging indicator may not appear for up to 5 minutes, but the battery is charging properly.

2.When charging is finished, unplug the adapter.



Note: Do not remove the battery from the phone without unplugging the adapter first. Otherwise, the phone may be damaged.

Phone layout and key functions



Silent mode

Press and hold **#** in Idle mode to disable all sounds on the phone. To exit, press and hold this key again.

Keypad lock mode

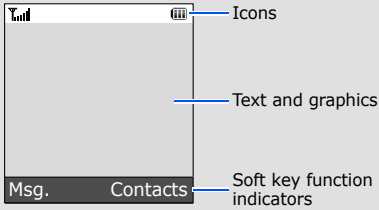
Press and hold ***** in Idle mode and then press the **Yes** soft key to lock the keypad and ignore accidental key pressing. To unlock, press the **Unlock** soft key and then *****.

SOS mode

Press **C** four times in Idle mode with the keypad locked to send an SOS message to preset phone numbers. Once the SOS message is sent, the phone will change to SOS mode and will receive calls only from the registered recipients. Upon receiving a call from the SOS message recipients, the phone will automatically answer the call. Press **End** to exit SOS mode.

Display

Your phone is in Idle mode when you are not on a call or using a menu. You must be in Idle mode to dial a phone number.



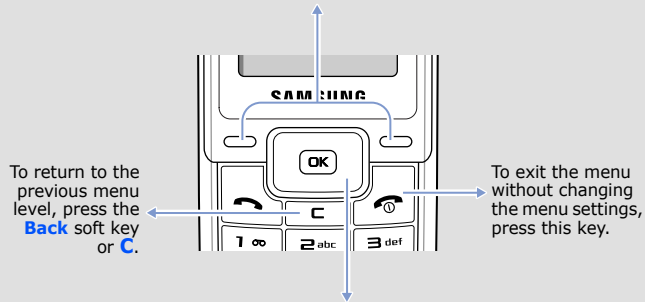
Your phone displays the following status indicators on the top of the screen:

Icon	Description
	Signal strength
	Call in progress
	Out of your service area; you cannot make or receive calls except for emergency calls
	SOS message feature active
	GPRS network
	Alarm set
	Silent mode (Vibration)
	Silent mode (Mute)
	Ringer type <ul style="list-style-type: none">None: Melody : Vibration : Vibration then melody
	Home Zone, if registered for the appropriate service
	Call diverting feature active
	New text message
	New voicemail message
	Battery power level

Using the menus

In Idle mode, press **OK** to enter the main menu.

Labels at the bottom corners of the display show the current soft key functions. Press the left soft key or right soft key to perform the function indicated.



Use the 4-way navigation keys to scroll up, down, left, or right through the menu system, highlight menu items, and change feature settings.

To select or modify a menu or feature:

- In Idle mode, press **OK**.
- Press the Navigation keys to reach a desired menu and then press the **Select** soft key or **OK**.
- If the menu contains any submenus, locate the one you want by pressing the Navigation keys. Press the **Select** soft key or **OK** to enter the submenu.
If the selected menu contains additional submenus, repeat this step.
- Press the Navigation keys to find the setting of your choice.
- Press the **Select** soft key or **OK** to confirm your chosen setting.

Shortcut numbers

You can quickly access the menu you want by using shortcut numbers. The shortcut number displays in front of the menu name in Menu mode.

Switching on or off the phone

- Press and hold **Power/End** for more than one second to switch on the phone.
- If the time & date message appears, press the **Yes** soft key and set the time and date by following the onscreen instructions.
- Press and hold **Power/End** for more than two seconds to switch off the phone.

Changing the display language

- In Idle mode, press **OK**.
- Select **Phone settings** → **Language**.
- Select a language.

Making a call

- In Idle mode, enter an area code and phone number, and press **Call**.
- Press **Call** to end the call.

Answering a call

- When the phone rings, press the **Accept** soft key or **Call** to answer a call.
Press **Reject** to reject the call.
- Press **Call** to end the call.

Menu map

1. Call log <ul style="list-style-type: none">1.1 Missed calls1.2 Received calls1.3 Dialed calls1.4 Delete all1.5 Call time1.6 Call costs*	4. Alarm <ul style="list-style-type: none">5.1 Text messages5.2 Preset messages5.3 Voice mail5.4 Broadcast5.5 Settings5.6 SOS messages5.7 Memory status	8. Sound settings <ul style="list-style-type: none">8.1 Incoming calls8.2 Messages8.3 Power on/off8.4 Connection tone8.5 Keypad tone8.6 Minute minder8.7 Silent mode8.8 Alerts on call
2. Phonebook <ul style="list-style-type: none">2.1 Find name2.2 FDN list2.3 Add entry2.4 Speed-dial list2.5 Own number2.6 Management2.7 Search by initials	6. My files <ul style="list-style-type: none">6.1 Images6.2 Sounds6.3 Delete all6.4 Memory status	9. Phone settings <ul style="list-style-type: none">9.1 Display9.2 Greeting message9.3 Language9.4 Security9.5 Auto redial9.6 Anykey answer9.7 Auto answer9.8 Auto keypad lock9.9 Reset settings
3. Applications <ul style="list-style-type: none">3.1 Clock3.2 Calculator3.3 Converter3.4 SIM-AT*	7. Network services <ul style="list-style-type: none">7.1 Call diverting7.2 Call barring7.3 Call waiting7.4 Network selection7.5 Caller ID	<p>* Shows only if supported by your SIM card.</p>

Adjusting the volume

- In Idle mode, press **Call**.
- Select **Sound settings** → **Incoming calls** → **Ring volume**.
- Press the Navigation keys to adjust the volume level.
- Press the **Save** soft key.

While a call is in progress, press **Up** or **Down** to adjust the earpiece volume.

Changing a ringtone for calls

- In Idle mode, press **Call**.
- Select **Sound settings** → **Incoming calls** → **Default ringtones** or **Sounds**.
- Select a ringtone and press the **Yes** soft key.

Redialling recent numbers

- In Idle mode, press **Call**.
- Press **Up** or **Down** to scroll to the number you want.
- Press **Call** to dial the number.

Entering text

Changing the text input mode

In a text input field, press the right soft key until the input mode indicator you want appears.

T9 mode

- Press **2** to **9** to start entering a word. Press each key once for one letter.
The word you are entering appears on the display. It may change with each keypress. Finish entering the word before editing or deleting any keystrokes.
Example: To enter "Hello" in T9 mode, press **4**, **3**, **5**, **5**, and **6**.
- Press **#** to insert a space and enter the next word.

ABC mode

Press the keys labelled with the letter you want once for the first letter, twice for the second letter, and so on.

For example, press **2** three times to enter "C" and **5** two times to enter "K".

Number mode

Press the keys corresponding to the digits you want.

Symbol mode

Press the number keys corresponding to the symbol you want and press the **OK** soft key. You can press **Up** or **Down** to display more symbols.

Tips for entering text

- To move the cursor, press the Navigation keys.
- To delete characters one by one, press **C**. To clear the display, press and hold **C**.
- To insert a space between characters, press **#**.
- To change case in T9 mode or ABC mode, press *****.
- To enter punctuation marks in T9 mode or ABC mode, press **1**.

Menu	Description
Menu > Applications > SIM-AT	Use a variety of additional services offered by your service provider.
Menu > Alarm	Set an alarm to sound at a specific time.
Menu > Messages > Text messages > Create	Create and send messages to other mobile phones.
Menu > Messages > Text messages > Inbox or Outbox	Read received or sent messages.
Menu > Messages > Text messages > Emoticon templates	Create templates of frequently used emoticons.
Menu > Messages > Text messages > Delete all	Delete messages in each message folder, or all messages at once.
Menu > Messages > Preset messages	Create templates of frequently used messages.
Menu > Messages > Voice mail	Access your voicemail server and listen to messages on the network.

Menu	Description
Menu > Phone settings > Auto answer	Set the phone to automatically answer after a specified time when you use the headset.
Menu > Phone settings > Auto keypad lock	Set the phone to automatically lock the keypad in times of inactivity.
Menu > Phone settings > Reset settings	Restore the phone to the factory default settings.

Important safety precautions

Read these guidelines before using your wireless phone. Failure to comply with them may be dangerous or illegal.

Drive safely at all times

Do not use a hand-held phone while driving; park the vehicle first.

Switching off when refueling

Do not use the phone at a refueling point (service station) or near fuels or chemicals.

Sending an SMS message

- In Idle mode, press **left**.
- Enter the message text.
- Press the **Options** soft key and add items using the following options:
 - Add media**: add sounds, images, or animated images.
 - Add emoticon**: add emoticons.
 - Preset messages**: add text templates.
- Press the **Options** soft key and select **Send**.
- Select an empty location.
- Enter a destination number and press the **OK** soft key.
- Press the **Send** soft key to send the message.

Menu	Description
Menu > Messages > Broadcast	Change settings for the service and access broadcast messages.
Menu > Messages > Settings	Set options for using messaging services.
Menu > Messages > SOS messages	Activate the SOS message feature. Enter recipients and select the repeat mode.
Menu > Messages > Memory status	Check memory information for messages.
Menu > My files > Images or Sounds	Access sounds or images in your phone's memory.
Menu > My files > Delete all	Delete sounds and images in each media box.
Menu > My files > Memory status	Check the amount of memory in use for sounds and images.
Menu > Network services	Access network services offered by your service provider.
Menu > Sound settings > Incoming calls	Select a ringtone for incoming calls, a volume level, or an alert type.

Switching off in an aircraft

Wireless phones can cause interference. Using them in an aircraft is both illegal and dangerous.

Switching off near all medical equipment

Hospitals and health care facilities may be using equipment that could be sensitive to external RF energy. Follow any regulations or rules in force.

Interference

All wireless phones may be subject to interference, which could affect their performance.

Special regulations

Follow any special regulations in force in any area and always switch off your phone whenever it is forbidden to use it.

Water resistance

Your phone is not water-resistant. Keep it dry.

Sensible use

Use only in the normal position (held to the ear). Avoid unnecessary contact with the antenna when the phone is switched on.


Quick feature reference

This section provides brief explanations of features on your phone.

Menu	Description
Menu > Call log > Missed calls, Received calls, or Dialed calls	View the most recent calls you have dialed, received, or missed.
Menu > Call log > Delete all	Delete the call logs in each call type, or all logs at once.
Menu > Call log > Call time	View the duration of recent calls you have dialed and received. Also reset the time counter.
Menu > Call log > Call costs	View the cost of your calls.
Menu > Phonebook > Find name	Search for contacts in Phonebook.
Menu > Phonebook > FDN list	Create a list of contacts to be used in FDN (Fixed Dialling Number) mode, in which the phone allows outgoing calls only to the specified phone numbers.

Menu	Description
Menu > Sound settings > Messages	Select the alert ringtone and alert type for incoming messages or set how often you are informed of a new message.
Menu > Sound settings > Power on/off	Set the phone to sound when it is switched on or off.
Menu > Sound settings > Connection tone	Set the phone to beep when a call is connected to the system.
Menu > Sound settings > Keypad tone	Select the keypad tone during dialling.
Menu > Sound settings > Minute minder	Set the phone to beep every minute during a call to keep you informed of the length of your call.
Menu > Sound settings > Silent mode	Set the phone's behavior to specific events in Silent mode.
Menu > Sound settings > Alerts on call	Set the phone to alert you when you receive a new message or when the time for an alarm comes during a call.

Emergency calls

Key in the emergency number for your present location, then press . Do not end the call until given permission to do so.

Small children and your phone


Keep the phone and all its parts including accessories out of reach of small children.

Accessories and batteries

Use only Samsung-approved batteries and accessories, such as headsets and PC data cables. Use of any unauthorised accessories could damage your phone and may be dangerous.

CAUTION

Risk of explosion if a battery is replaced by a substandard type. Dispose used batteries according to the instructions.




At very high volume, prolonged listening to a headset can damage your hearing.

Qualified service

Only qualified service personnel may repair your phone.

Menu	Description
Menu > Phonebook > Add entry	Add a new contact to Phonebook.
Menu > Phonebook > Speed-dial list	Assign speed dial numbers (2 to 9) for eight of your most frequently dialed numbers.
Menu > Phonebook > Own number	Check your phone numbers or assign a name to them.
Menu > Phonebook > Management	Copy all contacts on the SIM card to the phone's memory or delete all Phonebook contacts. You can also check memory information for Phonebook contacts.
Menu > Phonebook > Search by initials	Activate the last name and first name input fields on the contact list. You can find a contact with the initials.
Menu > Applications > Clock	Set the current time and date manually and set your local time zone.
Menu > Applications > Calculator	Perform basic arithmetic functions.
Menu > Applications > Converter	Do conversions such as length and temperature.

Menu	Description
Menu > Phone settings > Display	Change settings for the display and backlight.
Menu > Phone settings > Greeting message	Enter the greeting message to be displayed when the phone is switched on.
Menu > Phone settings > Language	Select a language to be used for the display text.
Menu > Phone settings > Security	Protect the phone against unauthorised use.
Menu > Phone settings > Security > Mobile tracker	Track your phone when it is stolen or lost. When someone tries to use your phone with other SIM card, the phone will automatically send the preset tracking message to preset numbers.
Menu > Phone settings > Auto redial	Set the phone to make up to ten attempts to redial a phone number after an unsuccessful call.
Menu > Phone settings > Anykey answer	Answer an incoming call by pressing any key, except for  .

SAR information

Your wireless phone is a radio transmitter and receiver. It is designed and manufactured not to exceed the emission limits for exposure to radio frequency (RF) energy set by the European Union (EU) Council. These limits are part of comprehensive guidelines and establish permitted levels of RF energy for the general population. The guidelines are based on the safety standards that were developed by independent scientific organisations through periodic and through evaluation of scientific studies.

The standards include a substantial safety margin designed to assure the safety of all persons, regardless of age and health.

The exposure standard for wireless phones employs a unit of measurement known as Specific Absorption Rate (SAR). The SAR limit set by the EU Council is 2.0 W/kg. The highest SAR value for this model phone was 0.796 W/kg.