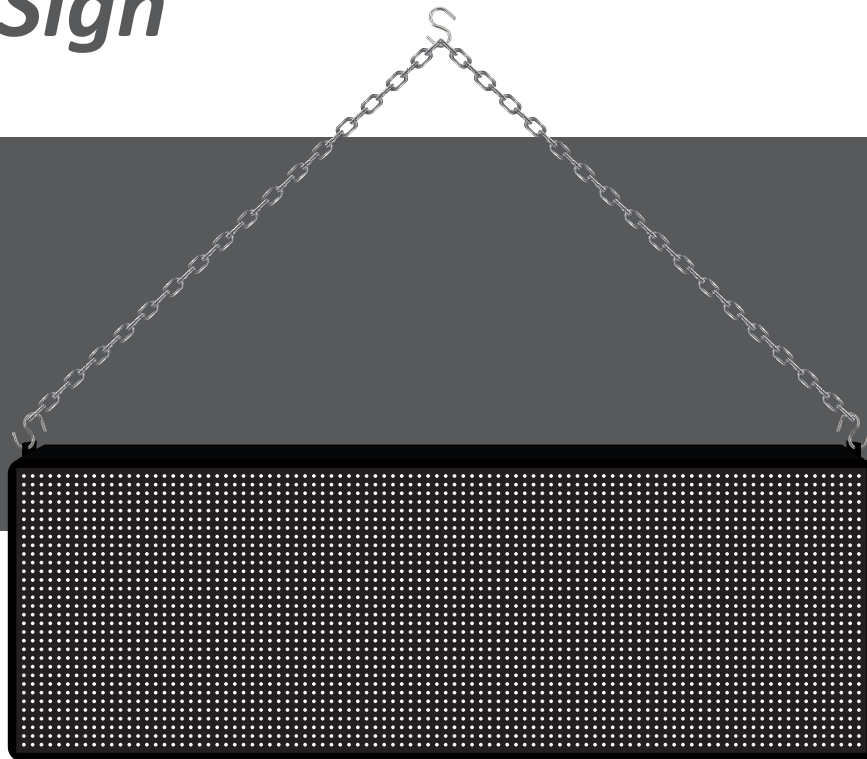




Window LED Sign

Mounting Instructions & User Manual



Mounting Instructions

Page 2

Software Installation & Use

Page 3

Warranty

Page 5

For more information, please visit
www.outdoorsignsameric.com/windowled

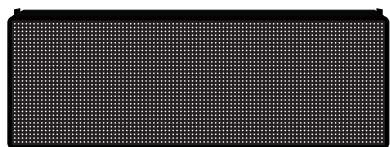
MOUNTING INSTRUCTIONS

2



Ensure that what you are hanging the display from can support **at least 30 pounds**.
Product is for **indoor use only**.

PARTS INCLUDED



Display unit



Power cable



4 "S" hooks

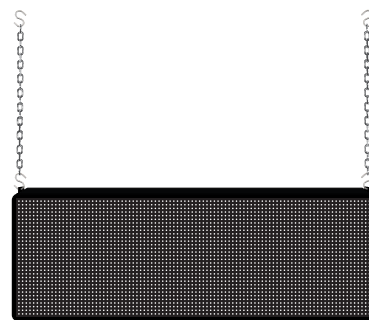


2 36-inch chains

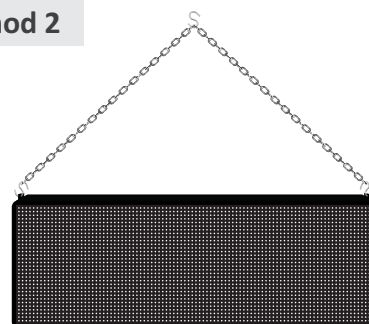
IF PARTS ARE MISSING, DO NOT RETURN TO THE STORE. PLEASE VISIT
www.outdoorsignsameric.com/windowled

HANGING METHODS

Method 1



Method 2



- 1 Remove the "S" hooks and chains from the enclosed bag.
- 2 Place an "S" hook through the holes on both mounting brackets on the sides of the display.
- 3 Attach one chain to each "S" hook and place another "S" hook at the end of each chain. You may adjust the length by placing the hooks closer to the center of the chain.
- 4 Hang each chain from a drop ceiling rail hook or wall anchor (not included). Alternately, you may hang both chains from a single center point. **Make sure the mounting method is rated to hold at least 30 pounds.**
- 5 Plug one end of the power cable into the display unit, and the other into a standard grounded 120-volt power receptacle. **Allow 90 seconds for the display to fully power up.**

Provided chains and hooks are not rated for weight over 30 pounds.

Do not share chains or hooks with any other items, as they could fail and cause injury or damage the display.



If you experience issues with your display, please **do not return to the store**.
For more information or to contact us, visit www.outdoorsignsameric.com/windowled



Your sign message is controlled using the provided **Sign Programmer** software and **USB drive**. The software requires a Microsoft Windows®-based PC to operate.

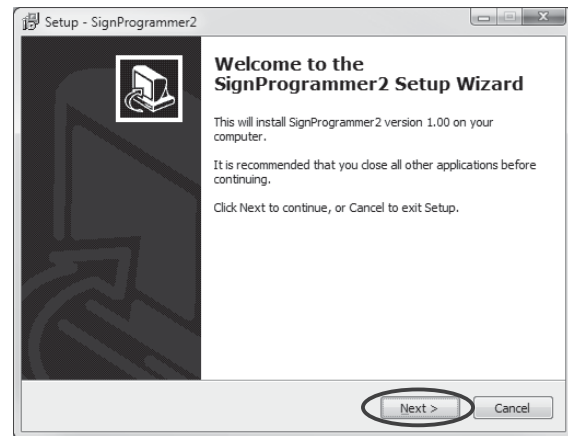
INSTALLING THE SOFTWARE

The software installation file is available **on the USB drive** that was provided with the sign, as well as at www.outdoorsignsamerica.com/windowled

Double click on the **signprogrammer.exe** file to start the installation process. If you use Windows® 7 or Windows® Vista, you may have to click **Yes** to the User Account Control window.

Select all of the default options by clicking the **Next** button, and complete the installation by clicking the **Finish** button.

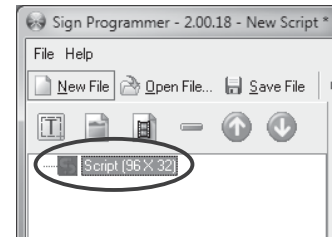
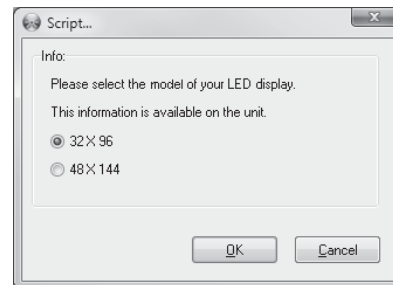
Once installed, the **Sign Programmer** icon will be available on your desktop and in your Start menu. Click on the icon to start.



CONFIGURING THE SOFTWARE

Before using the software, you must first select your model. This information is available on the unit or with your order information.

If you need to change this value in the future, double-click **Script** in the left tree view.



ADDING TEXT

Sign Programmer can add a text message to your sign.

Click the **New Text** button  in the toolbar.

Type the message into the black box.

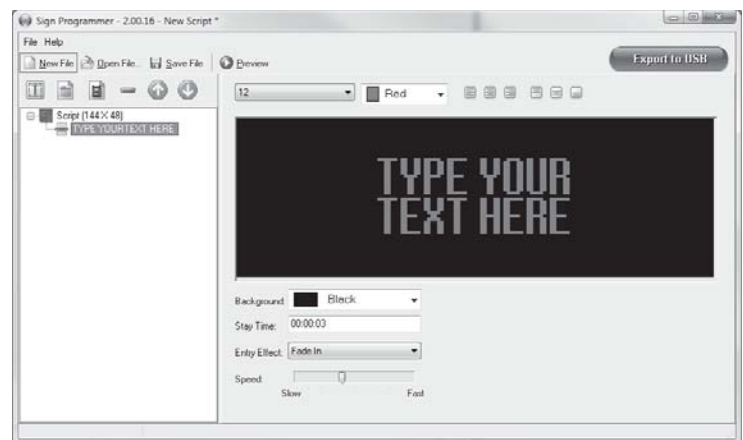
The text alignment can be changed using the alignment buttons:



The **size** and **color** of the text can be changed by selecting it and changing the appropriate selector tool:



The **background color** can also be selected:



The **Stay Time** is the duration that the text will stay on the sign.



Stay times are listed as **hours:minutes:seconds**, and does not include the time used by the Entry Effect.

Select an **Entry Effect** if you would like the text to transition on and off of the display.

The Speed of the effect can be controlled with the slider.


ADDING IMAGES & VIDEO CLIPS

Sign Programmer makes it easy to add the included images and video clips to your sign.




Click the **Image**  or **Video Clip**  button in the toolbar and select the image or video clip you would like to display.


With images, you may select a **Stay Time**, **Entry Effect** and **Speed** of the effect. Video clips will stay on the display for their full duration.



You may add your own images to the included library by clicking , browsing to and selecting the image. Because the image will be automatically resized to fit your display, it is recommended to use images with similar proportions and without a lot of detail. Images can be removed by deleting them from C:\Users\[username]\SignProgrammer2\library_image

ORDERING, REMOVING & PREVIEWING ITEMS


If you have more than one item being shown, you may adjust their order using the   buttons. Items can be removed with the  button.

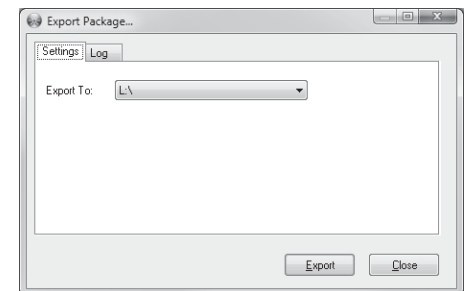
Once your content has been configured, click  to view what will be shown on your sign. Once you have finished previewing, click the **X** in the top right of the Preview window to close it.

*Sign Programmer supports up to **20 total items** for display. Exceeding 20 total items is not supported by the software.*

PLACING YOUR MESSAGE ON THE SIGN

A **USB drive** is used to move your message from the computer to the sign. It is recommended to use the USB drive that came with your sign, as others may not be formatted correctly. **The USB drive must not contain other data or folders.**




- 1 **Plug in** the USB drive into an open USB port on your computer. When the computer recognizes the USB drive, make note of the drive letter.
- 2 Click  in the top toolbar.
- 3 Select your USB drive from the **Export to** list, and then click **Export**.
- 4 You will be alerted if the export was successful. **Close** the Export window and **remove** your USB drive from the computer.
- 5 **Plug in** the USB drive into the USB port on the sign. Once prompted by the display, the transfer is complete. You may now safely remove the USB drive from the sign.



USB port

WORKING WITH SCRIPT FILES

A script file contains all of the information that you have entered into Sign Programmer. Script files are stored on your computer so that they may be changed at a future date.

- To create a **new** script file, click  **New File**
- To **open** an existing script file, click  **Open File**. Browse to the file location and click **Open**.
- To **save** your open script file to your computer, click  **Save File**

When Sign Programmer is closed and later restarted, it will open the last script file that was saved.

Definition of Warranty Coverage:

Outdoor Signs America (the "Company") expressly warrants to the original purchaser ("You" or "Buyer" or "Owner" or "Customer") that, for a period of one (1) year from the date of shipment (the "Warranty Period"), the company's product (the "Product") will be reasonably free of defects in materials and workmanship. During the Limited Warranty Period the Company will, at its discretion, repair or replace any defective covered product. This Limited Warranty only applies to the Company's Product if installed, used, and maintained in the manner recommended by Company and this Limited Warranty is conditioned upon compliance with all such instructions.

Failed electronic parts or assemblies will be repaired, exchanged or replaced, at the discretion of the Company. Telephone support is provided as needed during the warranty period. Replacement or repaired parts are warranted to be free from defects in material or workmanship for sixty (60) days or, for the remainder of the Limited Warranty Period.

The Company will repair failed LED pixels, if greater than 1.0% (one percent) of the total number of pixels in the sign have failed in one (1) year, provided the sign is installed with the recommended ventilation system for its location. The definition of pixel failure is when all LED's in the pixel will no longer emit light. Pixel repair is performed at the Company Repair Center. Owner bears the responsibility of transporting Product to Company's Repair Center. As known within the Sign Industry all LEDs degrade and produce less light as they age. Eventually the LEDs will require replacement even though the LEDs will still emit light. This Warranty does not cover normal LED degradation.

Customer Obligations:

Failure by the Customer to properly maintain the Product will void coverage for affected components. The Customer shall notify the Company immediately of equipment failure. Any information or suggestion by the Company with respect to the Product concerning applications, specifications or compliance with codes and standards is provided solely for your convenient reference and are made without any representation as to accuracy or suitability. You must verify and test the suitability of any information with respect to the Product for your specific application.

Exclusions and Restrictions:

1. Defects caused by unreasonable or unintended use of Product, improper or unauthorized handling, accident, omission, neglect, vandalism, misuse, physical abuse, installation, use and/or fabrication, and maintenance of the Product by any party other than the Company;
2. Damage not resulting from manufacturing defects that occur while the Product is in the Owner's control and/or possession;
3. Extreme physical or electrical stress or interference; environmental conditions beyond the Company' control such as man-made or naturally occurring corrosives and metallic pollutants; normal wear and tear; inadequate, improper, or surges of electrical power; lightning, floods, fire, acts of God, war, terrorism, or other external causes, including Force Majeure.
4. Unauthorized modification including installation of third-party software on the Product.
5. Computer viruses, Trojan horses, worms, self-replicating code or like destructive code which was not included in the Product by the Company.
6. In the event the sign is damaged during shipping it is the responsibility of the buyer to refuse delivery. The Company assumes no liability for damage caused by the freight carrier.

Warranty Process:

Warranty claims must be registered with the Company within thirty (30) days of damage or malfunction. To register a claim the Customer must contact the Company at the location specified below, providing your name and any other required contact information, a description of the Product, date of Product purchase, and nature of the defect, which may include, but is not limited to, written descriptions, photographs, video, defective parts or other evidence. The Company requires proof of original purchase (e.g. paid invoice, receipt) before assuming any responsibility under the provisions of this warranty.

Return Process:

All items returned to The Company must have a Return Materials Authorization (RMA) number, available by using the contact information below. Items received without an RMA number will not be processed and will be returned to the Customer at their expense. For issues discovered within 60 days of date of purchase, the Company will provide and be responsible for the cost of shipping the product back to The Company and then back to the Customer. For issues discovered after 60 days of date of purchase, the Customer is responsible for shipping costs to the Company and the Company will be responsible for shipping costs back to the Customer. The Company will instruct the Customer on required shipping packaging for the sign. This must be adhered to so damage does not occur during shipping. The Company is not responsible for shipping and handling damage. We recommended pictures be taken before shipping the product.

After the warranty period has expired, the Customer is responsible for all shipping handling and repair costs.

THE LIMITED WARRANTIES SET FORTH HEREIN ARE THE ONLY WARRANTIES MADE BY COMPANY IN CONNECTION WITH THE PRODUCT. COMPANY CAN NOT AND DOES NOT MAKE ANY IMPLIED OR EXPRESS WARRANTIES WITH RESPECT TO THE PRODUCT, AND DISCLAIMS ALL OTHER WARRANTIES, INCLUDING, BUT NOT LIMITED TO, ANY WARRANTY OF MERCHANTABILITY OR FITNESS FOR A PARTICULAR PURPOSE. COMPANY'S SOLE OBLIGATION UNDER THIS WARRANTY SHALL BE TO REPAIR OR REPLACE MALFUNCTIONING OR DEFECTIVE PARTS OF THE PRODUCT. BUYER ASSUMES ALL RISK WHATSOEVER AS TO THE RESULT OF THE USE OF THE PRODUCT PURCHASED, WHETHER USED SINGULARLY OR IN COMBINATION WITH ANY OTHER PRODUCTS OR SUBSTANCES.

Limitation of Liability:

No claim by Buyer of any kind, including claims for indemnification, shall be greater in amount than the purchase price of the Product with respect to which damages are claimed. IN NO EVENT SHALL COMPANY BE LIABLE TO BUYER IN TORT, CONTRACT OR OTHERWISE, FOR ANY SPECIAL, INDIRECT, INCIDENTAL, CONSEQUENTIAL, RELIANCE, PUNITIVE OR EXEMPLARY DAMAGES, OR FOR LOSS OF PROFIT, REVENUE OR USE, IN CONNECTION WITH, ARISING OUT OF, OR AS A RESULT OF, THE SALE, DELIVERY, SERVICING, USE OR LOSS OF USE OF THE PRODUCT SOLD HEREUNDER, OR FOR ANY LIABILITY THAT BUYER HAS TO ANY THIRD PARTY WITH RESPECT THERETO.

Contact Information:

Outdoor Signs America - 1400 8th Street North, Clanton, AL 35045 - Phone: 800-239-9990

Web: www.outdoorsignsamerica.com Email Support: support@outdoorsignsamerica.com