



**USER MANUAL**

**Z!O**

# **CONTENTS**

## **1. System Requirements and Installation**

## **2. Story**

## **3. Starting a Game**

**1) New Game**

**2) Continue**

**3) Option**

**4) Help**

## **4. Game Interface**

## **5. Game Controls**

## **6. Moral**

## **7. Level and Skills**

## **8. Items**

## SYSTEM REQUIREMENT AND INSTALLATION

### - System Requirement

Pocket PC with Windows CE for Pocket PC

Desktop PC with Windows 95/ 98/ NT 4.x/ 2000/ XP and Activesync 3.x

Supporting Processor: StrongARM Only

Color: 64K color

Memory size: 10MB free memory for Storage, 8MB free memory for Runtime

### - Installation

Connect the Pocket PC to your desktop PC using the ActiveSync 3.x connection.

Execute set-up file after inserting CD into CD-ROM.

Proceed by following directions displayed on screen.

First, the setup program will install Spawn on your desktop PC and then you will be prompted to install Spawn on your Pocket PC. The Spawn icon will be displayed on the Pocket PC screen when installation has been completed. After the game finishes installing, set-up executes the game. You can also start the program by clicking on the Spawn icon or clicking START> PROGRAMS> GAMES> Spawn

### - Please Note

When installing Spawn, you will need at least 8MB of run-time memory in the platform. If you receive the error message that reads: "There is not enough free disk space on the mobile device." Please close all other running tasks( Programs). Click START> SETTINGS> SYSTEM> MEMORY> RUNNING PROGRAMS> STOP ALL. Now click MAIN and use the slider bar to increase the program memory size. Re-install Spawn.

## STORY

Al Simmons who was the best soldier and a Special Agent was killed by a comrade betrayed him. However, His soul wasn't dead and he strikes a deal with the demon, Malebolgia: in exchange of the privilege of returning go Earth to see his wife Wanda, he must become a Hellspawn to lead hell's legion in the upcoming war Amageddon against humanity. His only wish was to have his wife Wanda be safe and see her again.

Unfortunately, Simmons barely recalls as Hellspawn 5 years after his death and discovers that Wanda has married Terry, his best friend.

Spawn finds himself can't live anymore like last Simmon and suffers from the paradox. It was Malebolgia's ruse that Spawn becomes the leader of devil's army after abandoning the past and humanity.

Although obligated to do work for the Devil, Spawn comes into conflict between his own inner human and devil. He goes through a lot of things....

## The Characters



**Spawn**

The hero in this game who is in a purgatory between vice and virtue.



**Al Simmons**

Spawn's before-life, once the government's best operative.



**Wanda Blake**

The woman Spawn loves, She was Al Simmons' wife but married to Terry.



**Terry Fitzgerald**

Al Simmons' best friend and partner, he married Wanda.



**Jason Wynn**

The boss of government agency Al Simmmon was in. He is concerned with Simmons' death.



**Clown**

The devil cunning and cruel, he jealous of Spawn. He has unspoken connection with Jason.



**Violator**

Clown is mogrified into.



**Redeemer**

Antispawn angelic orbital station made by the need for opposite of Spawn.



### Antonio Twistelli

The boss of Mafia, he is a rival of Spawn and Tremor.



### Overtkill

A cyborg designed by Mafia, Overtkill possesses mechanically augmented strength.



### Tremor

A monster by Mafia's secret Experiment, he is filled with revenge to Antonio.



### Sam and Twitch

NY cops, they are the best partners although they seem not so good together.



### Curse

Believes he is a messenger of God himself. He tries to kill Spawn because he regards Spawn as an enemy.



### Freak

Once, He runned black ops in Government but he became crazy after a mistake.



### Malebolgia

The most powerful devil, he plots on Spawn to make him fight for the dark side in Armageddon.

## STARTING A GAME

After successful installation, you will see this screen below.



### - Title Screen-

Tap on the title screen.

### - Main Menu-

**New Game:** Starts a new game.

**Continue:** Loads the game saved.

**Option:** Personalize a level and sound.

**Help:** Displays the help menu for the game.

**Exit:** Exits the game.



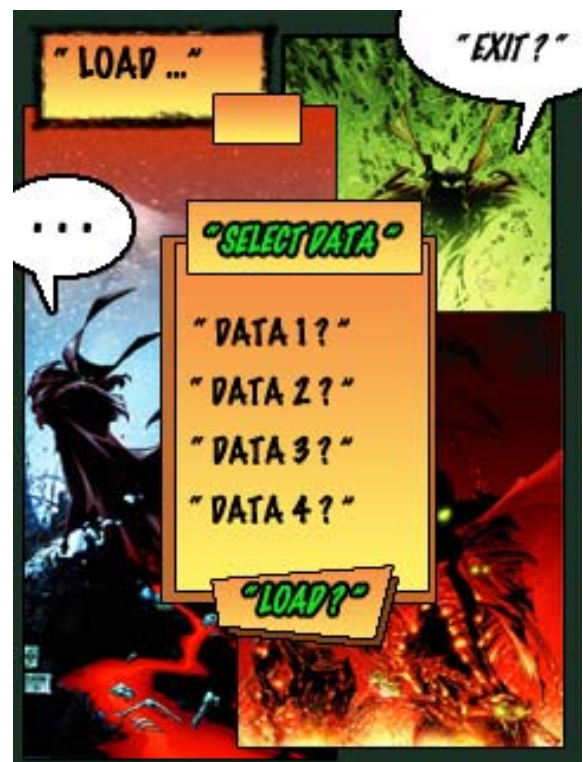


### - New Game-

Game starts with the screen as follows.

### - Continue-

Selects specific data of your previously saved.







### - Option-

Set the sound and difficulty level.

**Sound:** On/ Off

**Difficulty:** Easy/ Hard

( **Easy:** Spawn's 5 enemies become soft,

**Hard:** Spawn's 3 enemies become hard)

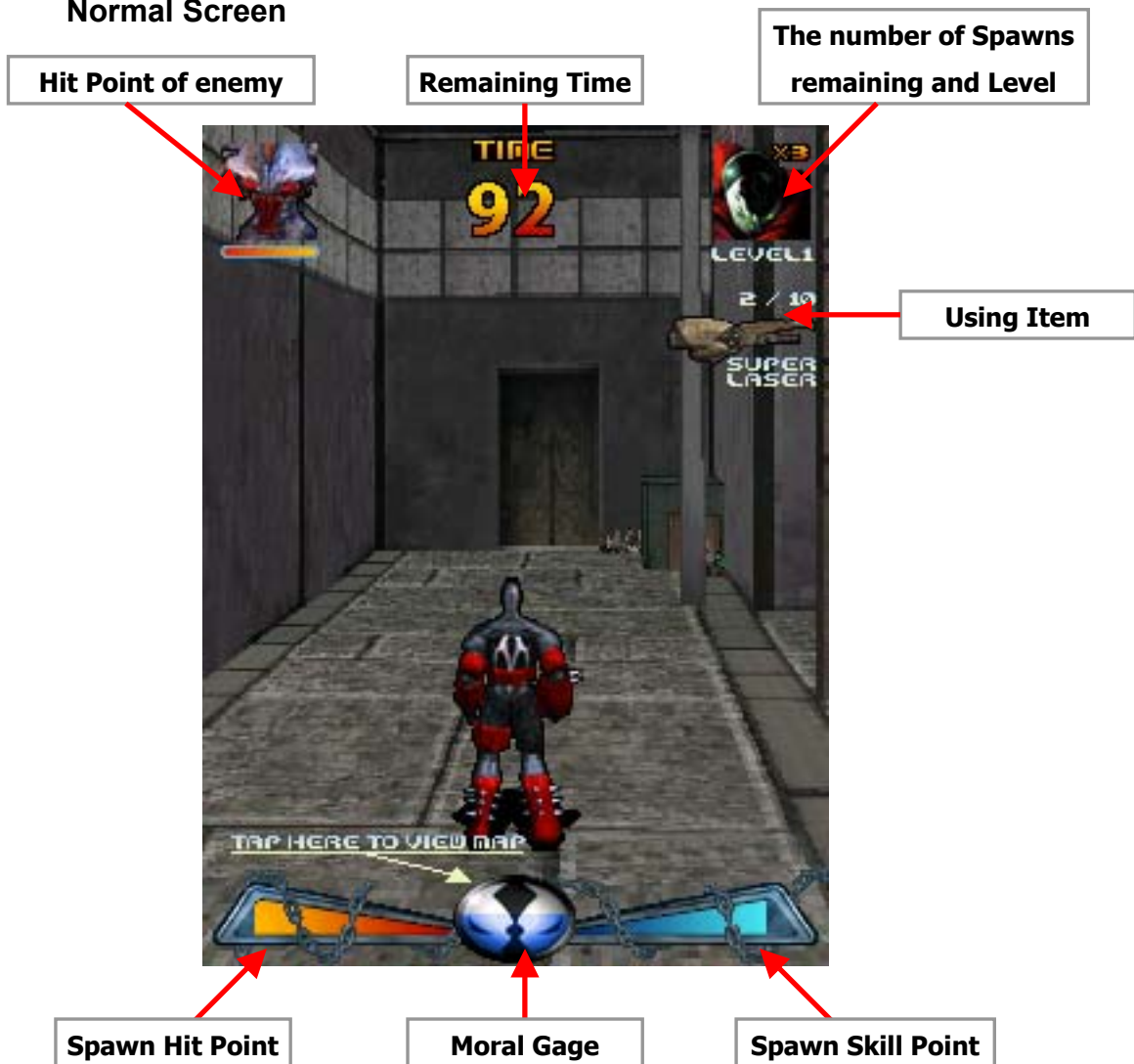
### - Help-

Displays the help menu.



## GAME INTERFACE

### Normal Screen



**Hit Point of Enemy:** The Gauge becomes the bigger, the less HP number is.

**Remaining Time:** When the time 0, Spawn dies. But Spawn can recover when having items.

**Spawn Hit Point:** When it indicates 0, Spawn dies. But Spawn can recover when having items.

**Spawn Skill Point:** When there is nothing, You can't use Skill. But Spawn can recover when having items.

**Moral Gauge:** According to Spawn's behavior, it is filled with the blue( good act) or with red( nice act). When it is packed out, it comes with Spawn's level up. Tap with your stylus, then you can see the screen shows Spawn's status and Mission.

## Mission Screen

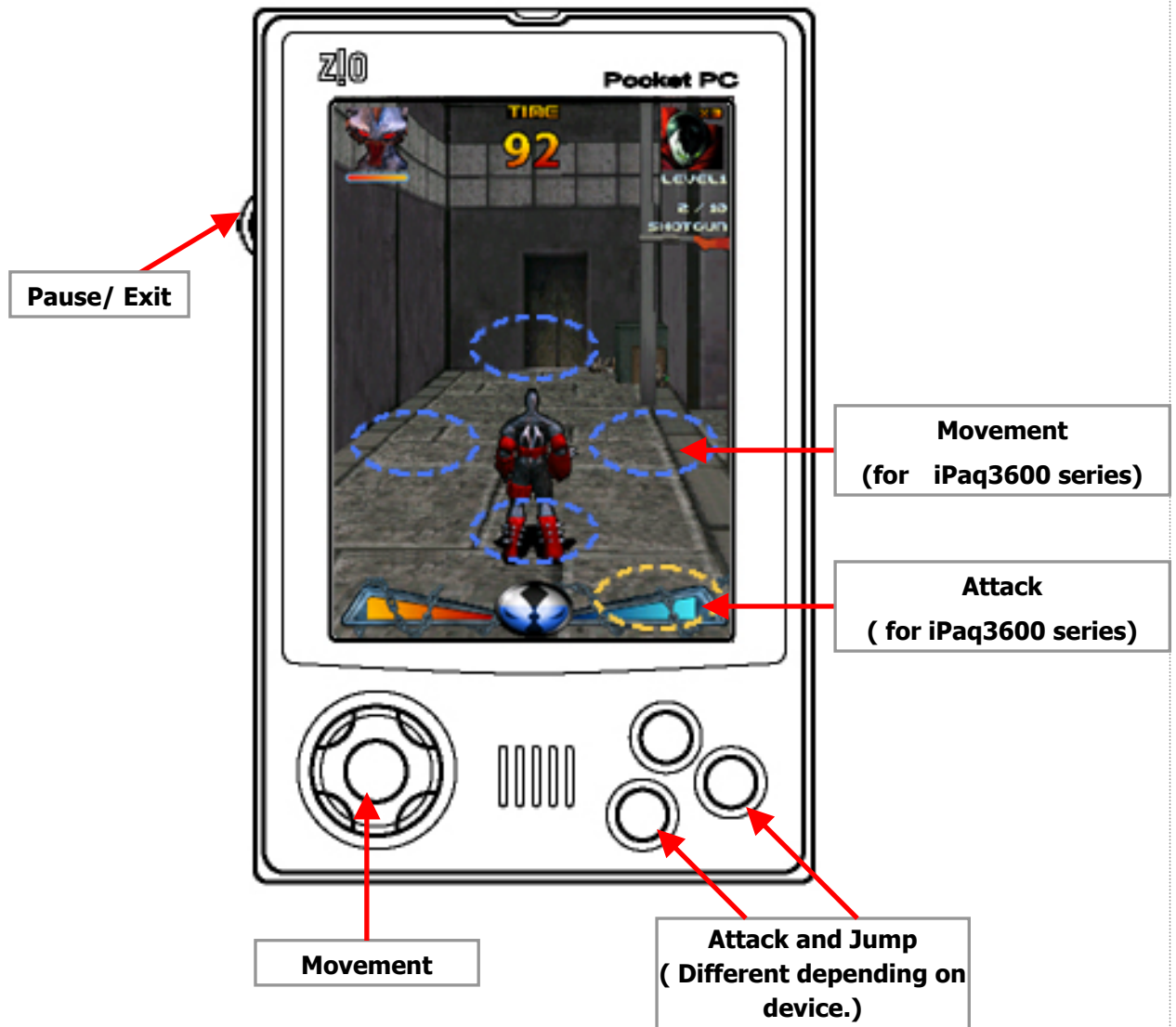


After tapping the Moral Gage, Mission screen appears above.

Mission screen comes with following items.

- Mission Object
- Spawn Hit Point, Skill Point, Power
- Mini map indicates the number of enemies remaining.

## GAME CONTROLS



**Movement:** Basically use the direction pad. You can also use stylus especially for some devices like iPaq3600 can't go through at the same time. Tap light or right direction two times quickly for bypass.

**Attack:** Combo use with pattern movement. Keep push long and off for using Skill.(Power of Skill increases and SP decreases in proportion to the length of click.)

**Jump:** Jump over where you can't walk.

**Pause/ Exit:** The game is paused and goes back to window while gaming.

## MORAL

Moral is important figure to level up.

Moral can become up or down.

When Spawn acts nicely, Moral become + and blue color, when he acts up, Moral comes with – and red color.

### - The Behavior to Increase Moral



- Knock down enemy.-



- Help someone in trouble.-



- Kill a mouse.-

**- The Behavior to Decrease Moral**



**- Kill the enemy completely.-**



**- Attack the man in trouble.-**



**- Attack dog and cat.-**

## LEVEL AND SKILLS

When Moral Gage is full of blue, it comes with Spawn's Level up.

With Spawn's Level up, HP and SP and Power grow up.

In a adequate level, Spawn changes and can use more powerful Skill.

The Skill is also different depending on Spawn's behavior whether he acts good or bad.



- First-



- Second-



- Third-



- Forth-

## ITEMS

### - Weapons



#### - Shot Gun-

Straight four shooter



#### - Machine Gun-

Fast straight shoot



#### - Rocket Launcher-

With explosion, around enemies also in damage



#### - Super Laser-

The most powerful gun

### - Medicines



#### - Band-

10% recovery of HP



#### - Bandage-

20% recovery of HP



#### - Pain Killer-

30% recovery of HP



#### - Medikit-

50% recovery of HP



#### - Capsule-

100% recovery of HP

### - Foods



#### - Cola-

10% recovery of SP



#### - Hotdog-

20% recovery of SP



#### - Pizza-

30% recovery of SP



#### - Barbecue-

50% recovery of SP



#### - Capsule-

100% recovery of SP

### - Others



#### - Clock-

Add 30 seconds