



USER MANUAL

KWW36W1RGB

KANDOLite[®]

I n d e x

summarize	3
safety instruction	3
outside size picture	4
main function	5
DMX controller function.....	5
Display operation instruction	6
Manual instruction.....	6
Operating control instruction	8
XRL connection instruction.....	9
Connection picture	10
Exploded Views	11
luminance list.....	12
Problem analyze.....	13
Technical's specification	15

Summarize

Thank you for purchasing our products. Please read these instructions carefully before begin and operate the fixtures according to these instructions to avoid any possible damages and accidents causes by misusage.

Products introduce

This led KWW36W1RGB color-changing projecting light is covered by high strength die-casting aluminum which is able to endure high temperature, designed in a fashion of hydrodynamic form. It takes uses 3W high power R, G, B 3 kinds LED, the color mixing effect is very good, high brightness. Each color can be independently dimmer, fading changes and so on. It uses power switch, performs low weight and consumption, stable capability and long life. The built-in program includes dimmer, strobe, eotic, gradual change, fading and so on. International standard DMX 512 signal is requested.

Packing list

- KWW36W1RGB light PC (Waterproof Power in/out extension Cable , Waterproof DMX in/out extension cable)
- Waterproof Power in Cable 1PC (with Plug)
- Waterproof DMX in 1PC (connect to DMX512 Controller)
- The use manual
- Warranty Card

Safety Information

! Enquire the skilled people before any repair;

! Always make sure disconnect from the power source before setting up, serving and moving;.

! Avoid direct eye exposure to the fixture when it is on;

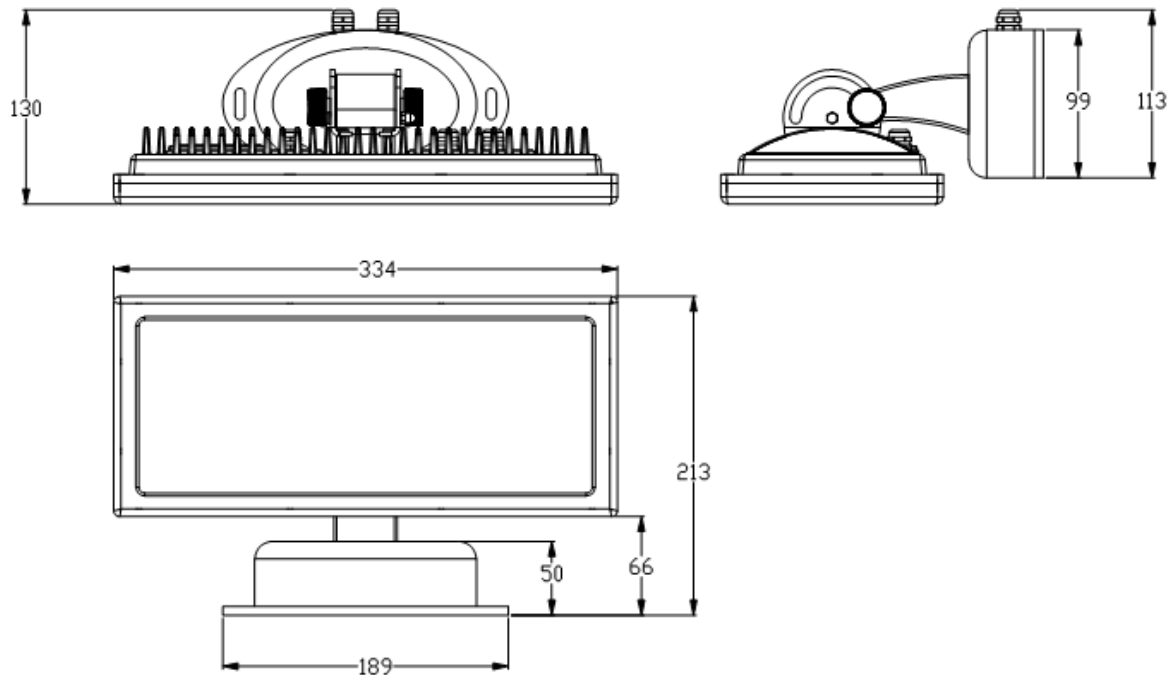
Safety instruction



Safety instruction

- Make sure the power supply voltages are consistent with this lights , Ensure the use of voltage is in the range of the request technical parameter.
- before the installation, please check the light's fasteners and mechanical structure have been received in good condition and appear no damage.
- This light is designed for indoor or outdoor, working temperature is lower than 40 degree.
- The fixtures maybe mounted in any position provided there is adequate room for ventilation. Make sure there are no inflammable and explosive items (ornaments) in 0.5 meters away.
- Yellow / green cabling earthling safety; no flicker when the fixture is working on.

Outside Size Picture



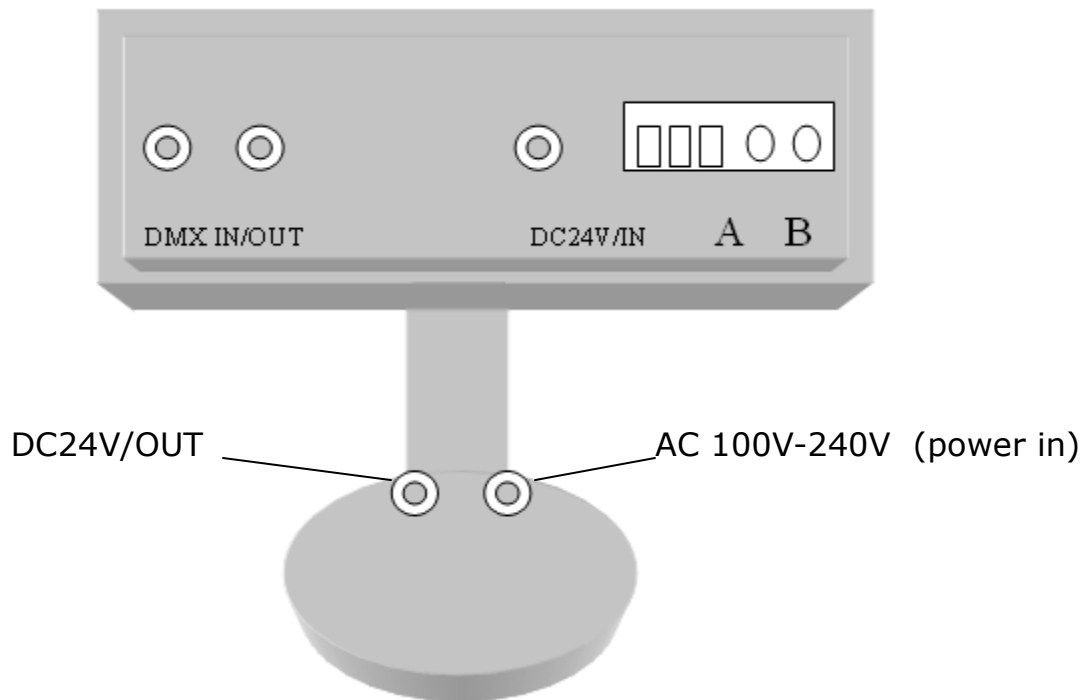
Main Function

- Protection rating: IP65, in door or out door used.
- the unique design of the cooling way: the light source is separately with the electrical source and natural air convection cooling
- DMX512 Controller , DMX ID address with 3 digitals display
- master slave/interconnected multi-machine control
- lens degree: 15° 、 25° 、 45° optional
- using switching power supply to protect the LED to work well
- linear dimming 1-100%, can dim separately
- Strobe 、 gradual change 、 jumping change

DMX Control Function

Channel	DMX Value	Control Function	Remark	Priority
1CH	0-255	General dimming	Must use this channel, otherwise no function of dimming	1
2CH	0-255	Red Dimming 0——100%		
3CH	0-255	Green Diming0——100%		
4CH	0-255	Blue Dimming0——100%		
5CH	0-14	Dimming	When the 6CH above is 32-223 , this channel has the function of speed adjustment0-255	2
	15-255	Strobe Speed		
6CH	0-31	Invalid	Must use CH1 、 2 、 3 、 4 otherwise no light , From the 5CH, start the speed adjustment	3
	32-63	From dark to bright		
	64-95	From bright to dark		
	96-127	From dark—bright—dark		
	128-159	RGB Gradient	From the 5CH adjust the speed(CH1 、 CH2 、 CH3 、 CH4 、 is invalid)	
	160-191	3 colors jumping change		
	192-223	7 colors jumping change		
	224-255	Auto run dark—bright—dark		

Display Operation



A : function button

B : setup button

Menu Instruction

1. "A" is the function button "B" is the setup button. correspond with DMX and built-in program mode.
 - DMX mode: When shows all of the figures (001-512), for the light's DMX address code, receive DMX512 signal.
 - built-in program mode: the first word on the left show "P" means built-in program mode, the second for the program 0-A, the third is to modify the programs.
2. operate as follows:
 - For the DMX mode, press "A" firstly, the left first digit flashing, then press "B" to adjust the hundredths address as 0-5.
 - press "A" secondly, the left second digit flashing, then press "B" to

adjust tens-digit as 0-9

- press "A" thirdly, the left third digit flashing, then press "B" to adjust ones-digit as 0-9
- press "A" fourthly, switch to built-in program mode, the display's first word on the left show "P", the second for the built-in programs and flashing, press "B" to modify the built-in program 0-9, "A" for the standby.
- press "A" fifthly, the third digit glinting, press B to modify the built-in programs.
- press "A" sixthly, switch to DMX mode again, return to step 1.

3. Built-in Program details (Pr- -)

The built-in program set as a master send out synchronization signals and make the slave synchronous with it. The Slave must be set in DMX mode and the address code should be A001, only set this can take over the signal of master. The Master outputs controlling signal, and Only one light can be set as a Master and others are slaves.

- "P11-P19": Red dimmer. Operate as: press "A" until the last digit glinting then press "B" key to change red dimmer (0-9, 9 is the brightest)
- "P21-P29": Blue dimmer. Operate as above. (0-9, 9 is the brightest)
- "P31-P39": Green dimmer. Operate as above. (0-9, 9 is the brightest)
- "P41-P49": Indigo dimmer. Operate as above. (0-9, 9 is the brightest)
- "P51-P59": Purple dimmer. Operate as above. (0-9, 9 is the brightest)
- "P61-P69": White dimmer. Operate as above. (0-9, 9 is the brightest)
- "P71-P79": White Strobe. (P71 is the fastest)
- "P81-P89": Auto run built-in program. (P81 is the fastest)
- "P91-P99": Gradual change. (P91 is the fastest)
- "PA1-PA9": is invalid.

4. When the screen flashes, it indicates that in the set-state. If you do not press any key for 8 seconds, the state will be saved automatically, and when you turn on the lights next time will show this state.

Operating Control Instruction

Master/Slave

Master : The master should be set as built-in program and shows "P - X - X" send out synchronization signals. To avoid the host signal and DMX512 signals interfere with each other, should cut off the DMX512 signals. The signal lines are longer than 60 meters, should increase a signal amplifier.

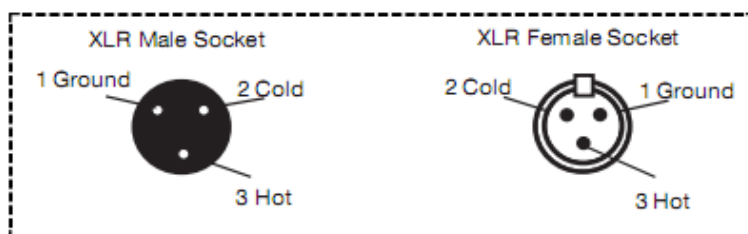
Slave : It must be in the SLAV mode and the address code should be A001 to assure receive the master's signals correctly. Only one light can be set as a Master and others are slaves.

Note: This product uses input and output power cord 1 m m' copper core wire, power line in series, when 220V AC should be less than 25 lights, and 110V AC less than 13 lights! ! !

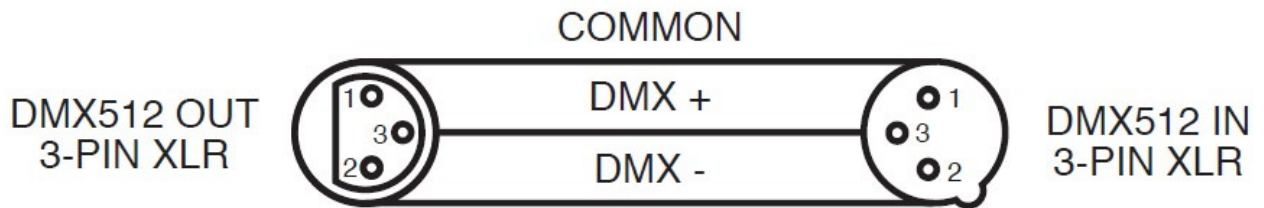
XLR cable connecting

XLR cable :

The standard connection way of the XLR is: one end connects to the male plug, and the other connects to the female.



XLR Pin Configuration	
Pin 1	= Ground
Pin 2	= Data Complement (negative)
Pin 3	= Data True (positive)



Noted In order to avoid failures and interference signal transmission we connect a resistance 120Ω (1/4W) at the end of the DMX connecting as below:



Termination reduces signal errors and avoids signal transmission problems and interference. It is always advisable to connect a DMX terminal, (Resistance $120\text{ Ohm } 1/4\text{ W}$) between PIN 2 (DMX-) and PIN 3 (DMX +) of the last fixture.

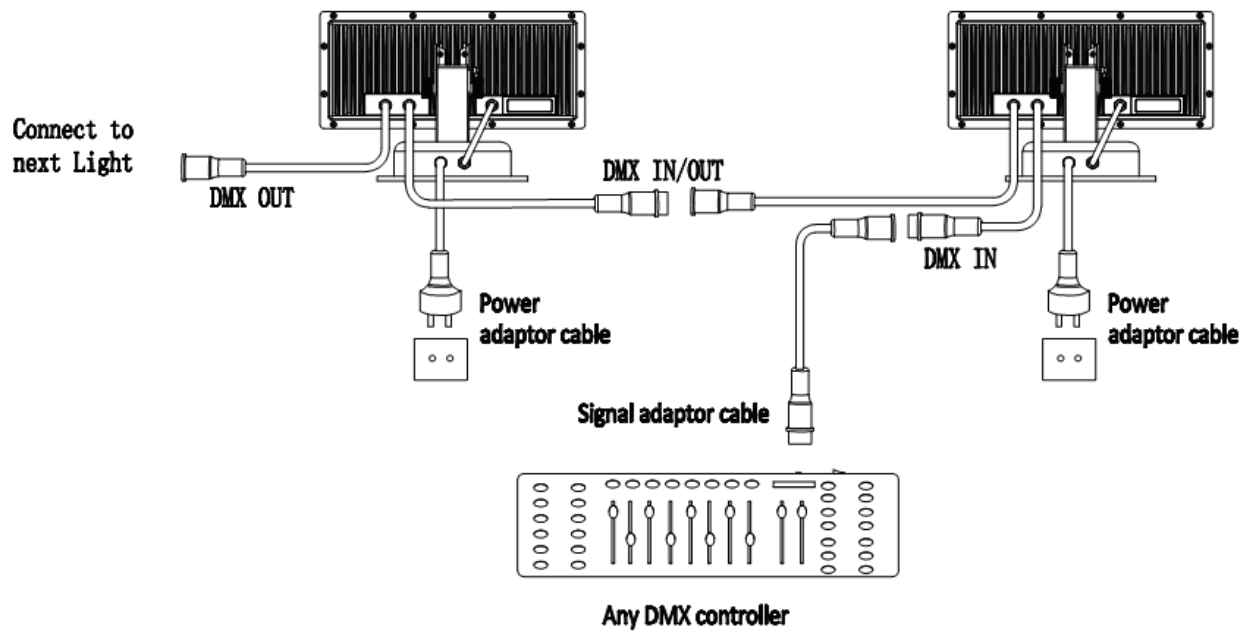
The Conversion between 3pin and 5 pin XLR

If the output cable of DMX512 controller is the 5PIN, please use 1pc 5PIN to 3PIN cable

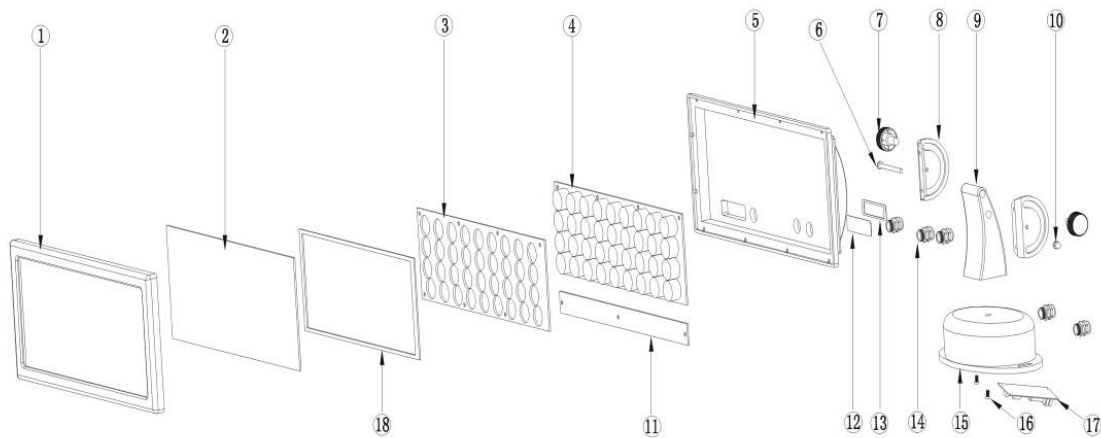
3-Pin XLR to 5-Pin XLR Conversion		
Conductor	3-Pin XLR Female (Out)	5-Pin XLR Male (In)
Ground/Shield	Pin 1	Pin 1
Data Compliment (- signal)	Pin 2	Pin 2
Data True (+ signal)	Pin 3	Pin 3
Not Used		Do Not Use
Not Used		Do Not Use

Connecting picture

Cable connecting picture

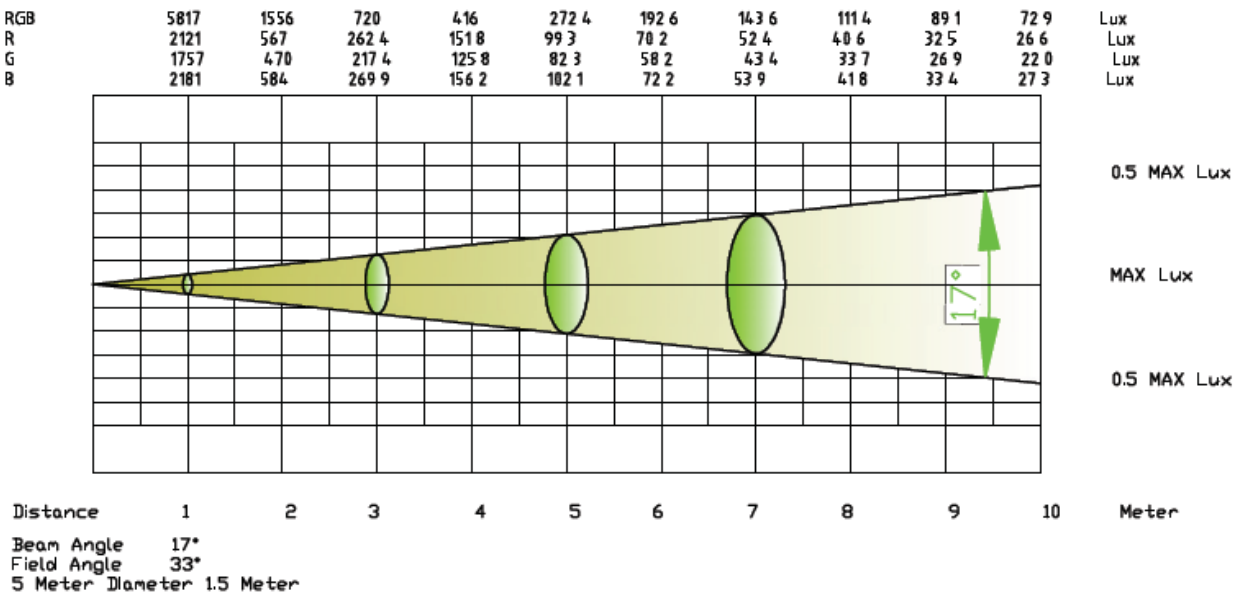


Exploded views

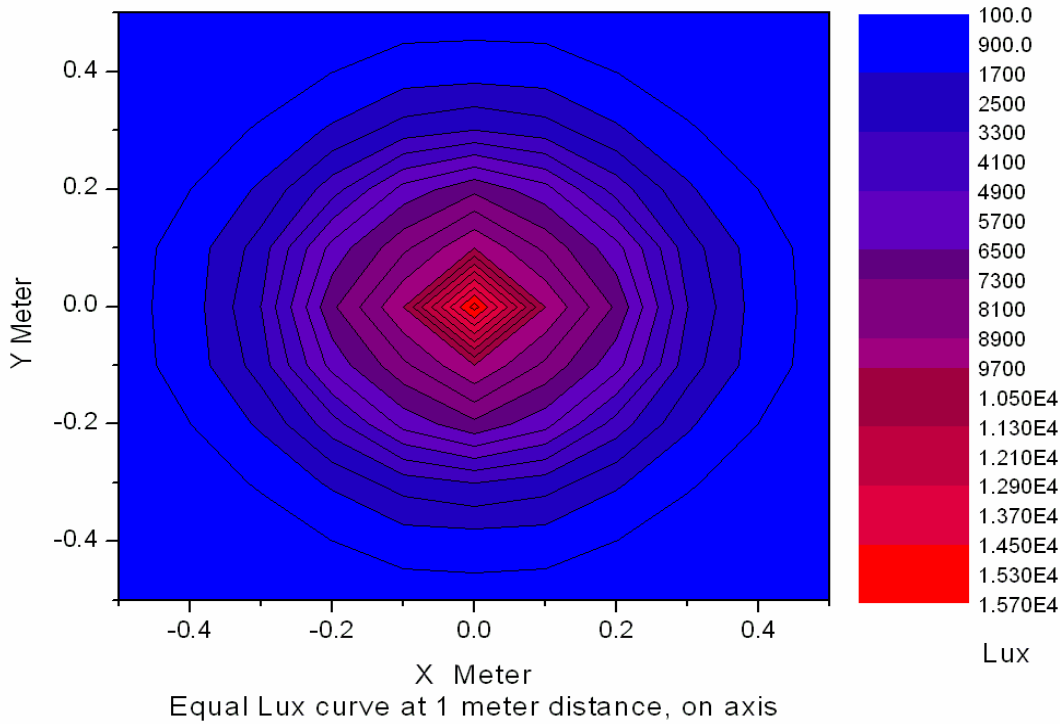


Order number	Item	Quantity	Remarks
1	Front cover	1PCS	
2	Glass	1PCS	
3	Lens platen	1PCS	
4	Aluminum base	1ASM	Finished product
5	Back cover	1PCS	
6	Screw	1PCS	
7	Rubber-headed screw	2PCS	
8	Adjustable stator	2PCS	
9	Binding post	1PCS	
10	Jam nut	1PCS	
11	PCB control board	1ASM	Finished product
12	Display screen waterproof silica	1PCS	
13	silica tabletting	1PCS	
14	PG7 wireclip	6PCS	
15	bottom base	1PCS	
16	screw	2PCS	
17	Power supply	1PCS	
18	glass waterproof silica gel	1PCS	

Illuminant list



Luminance Distribution



Problem Analysis

Problem	Checking way
Can not turn on the light	<ul style="list-style-type: none"> ◆ Check the power source plug is in normal or not ◆ Check the switch of the lights is off or on ◆ Check it the fuse if in normal
DMX can not control it	<ul style="list-style-type: none"> ◆ Check the DMX cable is connect to the lights or not ◆ Check the DMX512 controller work in normal or not ◆ Check the DMX cable is normal or not ◆ Check if the lights is in DMX mode(A001)
Display not bright	<ul style="list-style-type: none"> ◆ When connect to the electricity did the led flash one time? If so the power source is normal; If not please check if the switch and the transformer has power out ◆ Check if the power input of the IC board is normal ◆ Check if the cable connect to the display loose ◆ Change the main board to see if it is normal. ◆ Chang the display
LED not light	<ul style="list-style-type: none"> ◆ When connect to the electricity did the led flash one time? If so the power source is normal; If not please check if the switch and the transformer has power out ◆ Check if the power input of the IC board is normal ◆ Check if the cable connect to the display loose ◆ Change the main board to see if it is normal. ◆ Chang the display
	<ul style="list-style-type: none"> ◆ LED is connect by leds in series first, then connect

<p>Some of the LED not light</p>	<p>parallel, so please check if the leds is loose</p> <ul style="list-style-type: none"> ◆ Use the multi meter to check if the led is bright or not, of not, please change the led ◆ check whether current limiting resistor is normal or not ◆ Check constant current IC is normal or not (compared with the normal IC)
<p>Single color leds always bright/not bright</p>	<ul style="list-style-type: none"> ◆ Check the switch of this color is normal or not ◆ Change the IC control board

Noted only professional persons can do as above !

Technical Specification

- Input voltage : AC 170V-264V/47-63HZ
- Output voltage : DC24V
- Consume : 50W
- Lamp Type : High Power LED (1W)
- Lamp Spec : R (12PCS) 、 G (12PCS) 、 B (12PCS)
- Control Signal : DMX512, Master/Slave
- Control mode : stand alone/ DMX/ master and slaver
- Channel : 6CH
- Color effect : R 、 G 、 B mixing
- Function Effect : dimmer, strobe, water, gradual change
- Beam Angle:45°
- Cooling mode: Natural Convection
- Protection Rating: IP65
- Cooling mode: Natural Convection
- Anti-electricity intension : 1.5KV
- Insulation Resistance : $> 2 \text{ M}\Omega$
- Size: : : 334*130*213mm
- Net Weight : 4KG

KANDOLite®

Copyright 2012 KANDOLITE. All rights reserved. Due to continuous improvements and innovations, specifications may change without notice.