

GE-DS-82 and GE-DS-82-PoE Managed Switch Installation Sheet

Package Contents

Thank you for purchasing the GE Security 8-Port Fast Ethernet + 2-Port Gigabit TP/SFP Combo Managed PoE Switch.

The following Managed Switch model numbers are covered in this sheet:

- **GE-DS-82**
- **GE-DS-82-PoE**

Open the box of the Managed Switch and carefully unpack it. The box should contain the following items:

- The Managed Switch x1
- User manual CD x1
- This Installation Sheet x1
- RS232 cable x1
- Rubber feet x 4
- Two rack-mounting brackets with attachment screws x1
- Power Cord x1

If any item is found missing or damaged, please contact your local reseller for replacement.



System Requirements

Your switch is designed to operate with a variety of platforms, operating systems and network cards. Actual performance will depend on a combination of these components. Differences in performance can occur depending on the versions and types of platforms, operating system and network cards used.

The minimum system requirements are:

- Clients running Windows 98/ME, NT4.0, 2000/XP, Vista, MAC OS9 or later, Linux, UNIX or other platform compatible with TCP/IP protocols.
- Workstation installed with an Ethernet NIC (Network interface Card)
- Serial Port connection (Terminal)
 - Above PC with COM Port (DB-9)
- Ethernet Port connection
 - Network cables - Use standard network (UTP) cables with RJ45 connectors.
 - Above PC installed with WEB Browser and JAVA runtime environment Plug-in

Note: We recommend using Windows XP or Windows 7 with Internet Explorer 6.0 or above for access to the switch management setup.

Terminal Setup

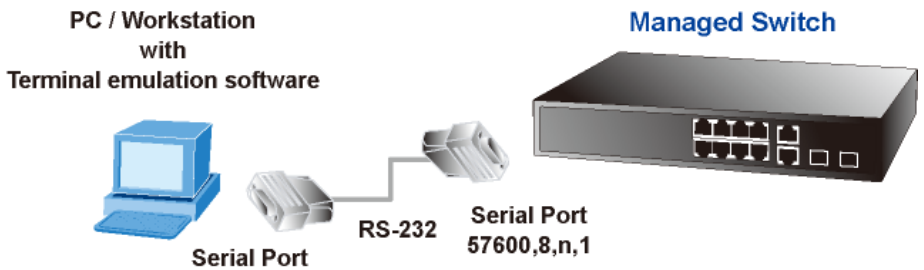
There are three ways to access and setup your switch. They are:

- RS-232 console
- Telnet
- Web Browser

RS-232 console

To configure the system, connect a serial cable to a COM port on a PC or notebook computer and to the serial (console) port of the GE-DS-82 Managed Switch. The console port of the Managed Switch is DCE already, so that you can connect the console port directly through PC without the need of Null Modem.

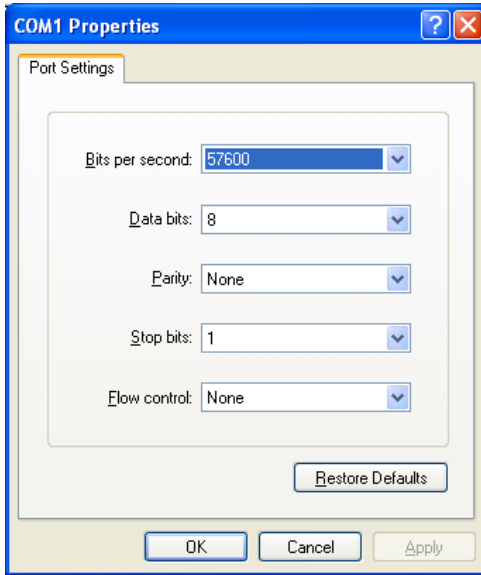
Figure 1: Terminal setup diagram



A terminal program is required to make the software connection to the GE-DS-82 and the GE-DS-82-PoE Managed Switch. Window's Hyper Terminal program is a good choice. The Hyper Terminal program can be accessed from the Start menu.

1. Click **START**, then **Programs/ Accessories** and then **Hyper Terminal**.
2. When the **COM1 Properties window** appears, configure the COM port with the following parameters and then click the **OK** button.
 - Baud : **57600**
 - Parity : **None**
 - Data bits : **8**
 - Stop bits : **1**
 - Flow Control: **None**

Figure 2: The COM1 properties window



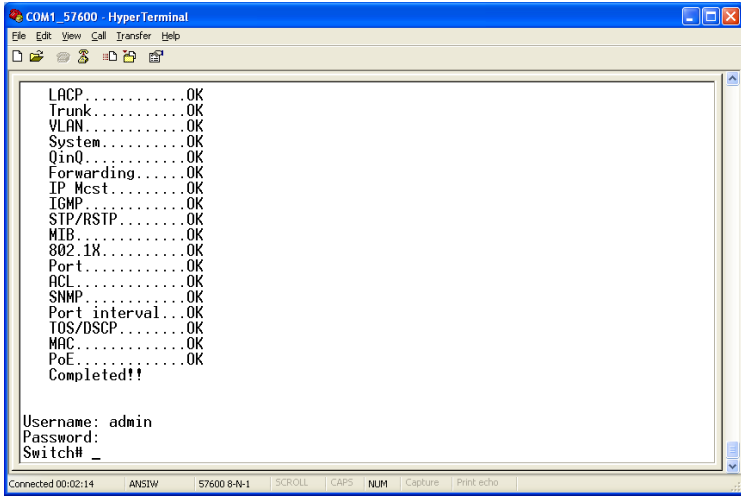
Logon to the Console

Once the terminal has connected to the device, Supply power to the GE-DS-82 and the GE-DS-82-PoE Managed Switch, the terminal will display that it is running testing procedures.

The following message asks for the login username and password. The factory default password for the login screen is:

- Username: **admin**
- Password: **admin**

Figure 3: GE-DS-82 Login screen

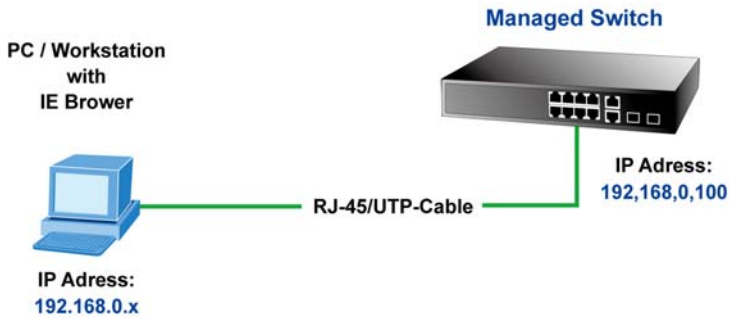


Note: For security reasons, please change and memorize the new password after this first setup. Passwords must be entered in lowercase letters in the console interface.

Telnet Setup

1. Connect an RJ-45 cable from the PC to a Switch port on the Managed Switch.

Figure 4: RJ-45 connection diagram



2. Launch the Hyper Terminal program. A terminal program is required to make the software connection to the Managed Switch. Windows' **Hyper Terminal** program is a good choice. Hyper Terminal can be accessed from the **Start** menu. Click **START**, then **Programs, Accessories** and then **Hyper Terminal**.
3. The following screen will appear. Input a new connection name. You should use something like the model name of your switch.

Figure 5: The New Connection dialog window



4. Change the **Connect using** drop-down menu to **TCP/IP (Winsock)** then input the **Host address**. The Managed Switches default IP address is **192.168.0.100** and the default telnet port number is **23**, then press the **OK** button.

Figure 6: The Connect to dialog window



Log on to the Console

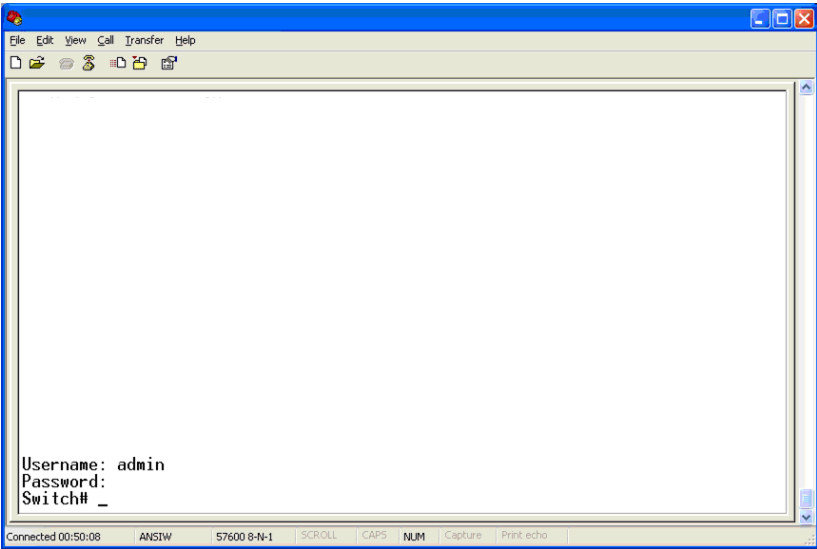
Make sure the device finished booting. Once telnet has connected to the device, Hyper terminal will display the login request.

The following message asks for the login username and password. The factory default password username and password is:

User name: **admin**

Password: **admin**

Figure 7: The Login request window



Now you can configure the Switch by Telnet.

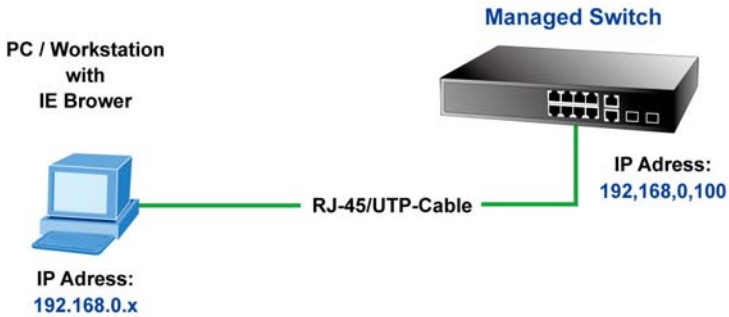
Web Browser Setup

Start Web Management

The following shows how to start up the Web Management of the GE-DS-82 Managed Switch. Please note that the Managed Switch is configured through an Ethernet connection, make sure the manager PC must be set on the same IP subnet address.

For example, the default IP address of the GE-DS-82 Managed Switch is **192.168.0.100**, then the manager PC should be set at **192.168.0.x** (where x is a number between 1 and 254, except 100), and the default subnet mask is 255.255.255.0.

Figure 8: IP management diagram



Login to the managed Switch

1. Enter the IP address **http://192.168.0.100** (the factory-default IP address or one you have previously changed in the console) in the Web Browsers Address Field
2. The following dialog box appears, please enter the default password "admin" (or the password you have changed via console). The login screen in Figure 9 appears.
 - Default IP Address: **192.168.0.100**
 - Default Username: **admin**
 - Default Password: **admin**

Figure 9: Login screen



3. After entering the username and password, the main screen appears as shown in Figure 10.

Figure 10: Main Screen of the GE-DS-82



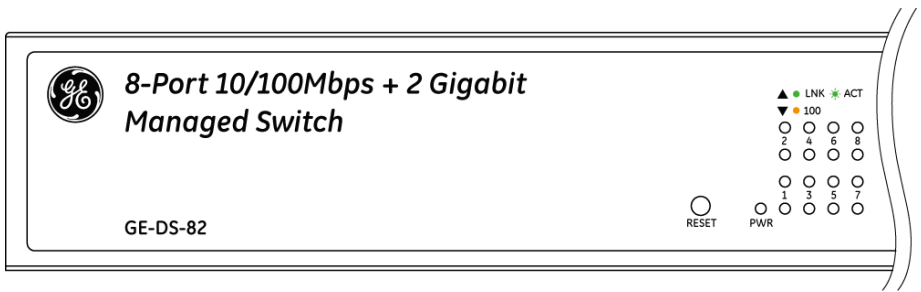
4. You can use the Web Management interface to continue the Switch management, please refer to the user manual for more information.

NOTE: For security reasons, please change and memorize the new password after this first setup.

Resetting the IP Address

To reset the IP address to the default IP Address "192.168.0.100" or reset the login password to default value. Press the hardware **reset button** on the front panel for about **10 seconds**. After the device has rebooted, you can login to the WEB Management interface within the same subnet of 192.168.0.xx.

Figure 11: Reset button



Contact information

Thank you for purchase GE Security products. You can browse our online FAQ resource at the GE Security website first to check if it could solve you issue. If you need more support information, please contact GE Security support team.

888 GE Security (888.437.3287) Toll-free in the US, Puerto Rico, and Canada.

503.885.5700 outside of the toll-free area.

For contact information see our Web site: www.gesecurity.com.

For contact information see our Web site: www.gesecurity.eu.

Copyright GE Security Technology Corp. 2009.

Contents subject to revision without prior notice.

GE Security is a registered trademark of GE Security Technology Corp. All other trademarks belong to their respective owners.