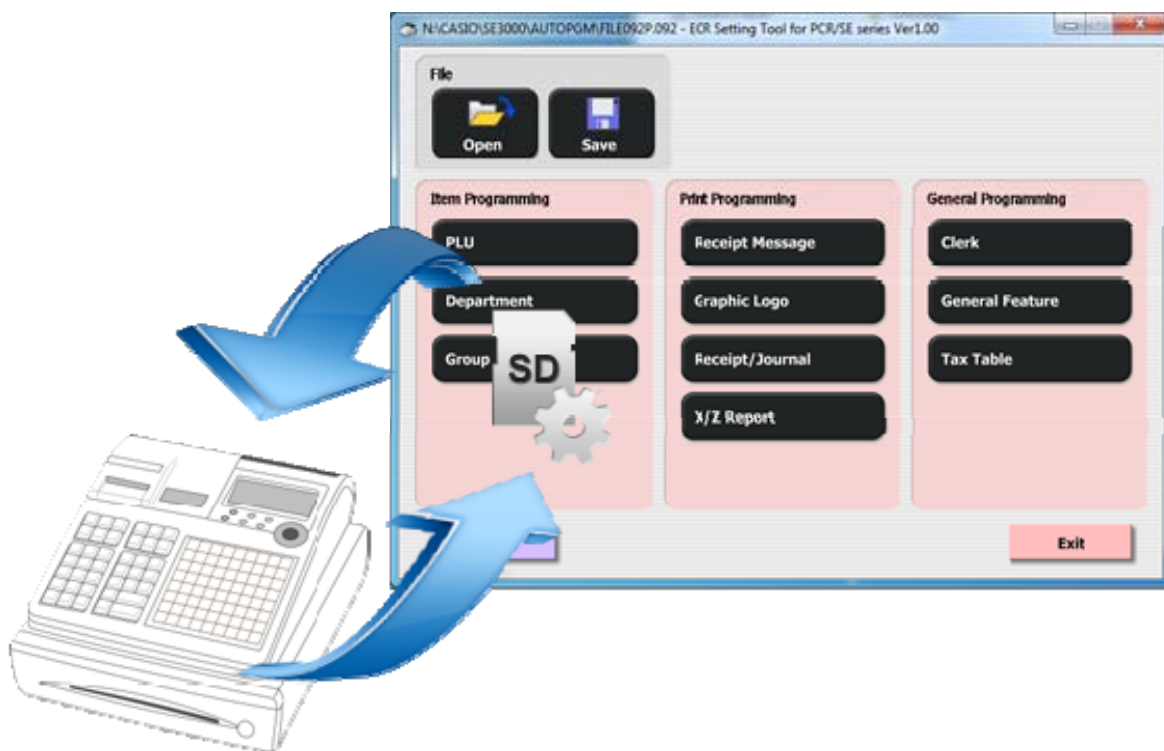


Utilization Guide

ECR Setting Tool

For PCR/SE Series Electronic Cash Register



Introduction

Thank you very much for purchasing CASIO PCR/SE Series Electronic Cash Register (herein after “ECR”). This manual describes the functions and operations of ECR Setting Tool for CASIO PCR/SE Series ECR.


* Before reading this manual, please read through the User’s Manual of your PCR/SE Series ECR.

Before using ECR Setting Tool

- The contents of this manual are subject to change without prior notice due to improvements or modifications of ECR Setting Tool.
- Please note that Casio Computer Co., Ltd. do not take any responsibility for any damage, lost profit, or claims from third parties arose from data losses or change caused by misuse of this manual or ECR Setting Tool, failure, or repairs of ECR Setting Tool.
- Unless it is stated, all rights to this manual and the software referred to in this manual are reserved by Casio Computer Co., Ltd. Copying a part or all of this manual or the software without a documented agreement of Casio Computer Co., Ltd. is prohibited.
- Screens and illustrations in this manual may differ from the actual ones. Also, key icons of ECR are simplified.

Notations used in this manual

This manual uses the following notations.

Notation	Description
	Explains notices and restrictions.
[]	Indicates buttons appeared on screens and dialog boxes.
< >	Indicates menus or options appeared on screens.

Trademark information

- Microsoft and Windows are registered trademarks of Microsoft Corporation in the U.S. and other countries.
- SD, SDHC, miniSD and microSD are trademarks of SD-3C and LLC.
- Adobe, Acrobat and Adobe Reader are either registered trademarks or trademarks of Adobe Systems Incorporated in the U.S. and/or other countries.
- The names of other companies, products and/or services in this manual are the trademarks or registered trademarks of those companies.

Contents

Contents	i
1. Software Overview	1
1.1 Features	1
2. Setup and Basic Operation	2
2.1 Operation environment	2
2.2 Installation of ECR Setting Tool	3
2.3 Startup and termination of ECR Setting Tool	5
2.3.1 Connecting a SD/SDHC card reader/writer	5
2.3.2 Starting up ECR Setting Tool	5
2.3.3 Terminating ECR Setting Tool	6
2.4 Operation flow using a SD/SDHC card (ECR ↔ ECR Setting Tool)	8
2.4.1 About a SD/SDHC card	8
2.4.2 Operation flow (ECR ↔ ECR Setting Tool)	9
3. Menu Screen of ECR Setting Tool	15
3.1 Menu screen	15
4. File Operations	16
4.1 <Open> menu	16
4.2 <Save> menu	17
4.3 [Exit] button	17
4.4 [Help] button	17
5. Editing Functions of ECR Setting Tool	18
5.1 <PLU>	19
5.1.1 PLU list	19
5.1.2 PLU item settings	20
5.2 <Department>	21
5.2.1 Department list	21
5.2.2 Department settings	22
5.3 <Group>	23
5.3.1 Group list	23
5.3.2 Group settings	24
5.4 <Receipt Message>	25
5.4.1 Receipt message settings	26
5.5 <Graphic Logo>	27
5.5.1 Preparation of graphic logo and thermal POP image data	27
5.5.2 Graphic logo/thermal POP list	28
5.5.3 Editing graphic logo/thermal POP	29

5.6	<Receipt/Journal>	32
5.6.1	Receipt/journal settings.....	32
5.7	<X/Z Report>	33
5.7.1	X/Z report settings.....	33
5.8	<Clerk>	34
5.8.1	Clerk list	34
5.8.2	Clerk settings	35
5.9	<General Feature>	36
5.9.1	General feature settings.....	36
5.10	<Tax Table>	37
5.10.1	Tax table settings	37
6.	Appendix.....	39
6.1	Error message list.....	39

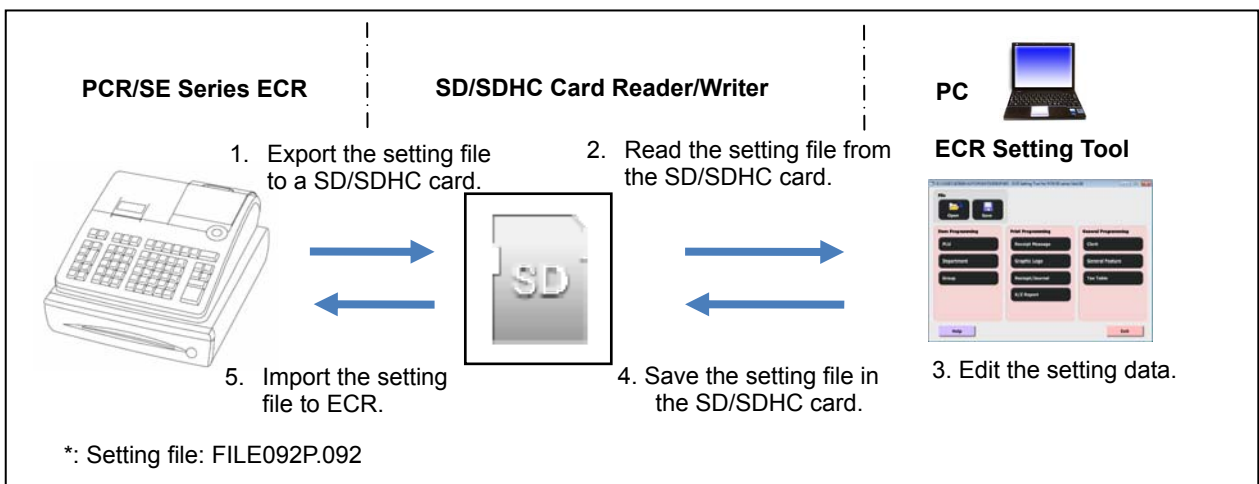
1. Software Overview

Using a PC system, ECR Setting Tool creates and edits the setting files of the Register for PCR/SE Series.

After installing ECR Setting Tool on your PC, the setting file (FILE092P.092) that consists of program data and receipt's message data can be transferred between your PC and PCR/SE Series ECR via a SD/SDHC card. ECR Setting Tool edits the setting file (FILE092P.092).

1.1 Features

- Reading the setting file (FILE092P.092) from a SD/SDHC card.
Run the setting tool and click <Open> to read the setting file stored in the SD/SDHC card. The SD/SDHC card is needed to be installed in the SD/SDHC card reader/writer connected to your PC.
* You need to export the ECR's setting file to the SD/SDHC card beforehand.
- Editing and saving the setting data
ECR Setting Tool provides file functions to operate the setting file and editing functions to edit the settings of the setting file. For example, frequently used items such as item programming and clerks can be edited. Also, settings for general operation on ECR can be set.
- Setting the receipt messages
Logo, commercial and bottom messages that will be printed on the receipt can be edited.
- Setting the graphic logo and thermal POP
The graphic logo and thermal POP that will be printed on the receipt can be created.
* One graphic logo is provided by default. For other graphic logos and thermal POPs, you need to prepare by yourself. (Data format: bitmap)
- Saving the setting file (FILE092P.092) to the SD/SDHC card
Saves the edited setting data to the SD/SDHC card. (ECR can import this setting data from the SD/SDHC card.)



2. Setup and Basic Operation

2.1 Operation environment

ECR Setting Tool works on a PC operated by a Windows OS.

■ Operating systems

- Windows XP (32Bit) Service Pack 3
- Windows 7 (32Bit/64Bit) Service Pack 1 or higher
- Windows 8 (32Bit/64Bit)

■ Hardware requirements

- IBM PC/AT compatible
- CPU: Should meet the system requirements of the OS
- RAM: Should meet the system requirements of the OS
- Hard disk space: More than 1GB free disk space
- Display: XGA (1024 x 768), high color (16-bit) or higher
- Mouse or other pointing device
- SD/SDHC card reader/writer
 - * If your PC is equipped with a SD/SDHC card slot, you can use that slot.

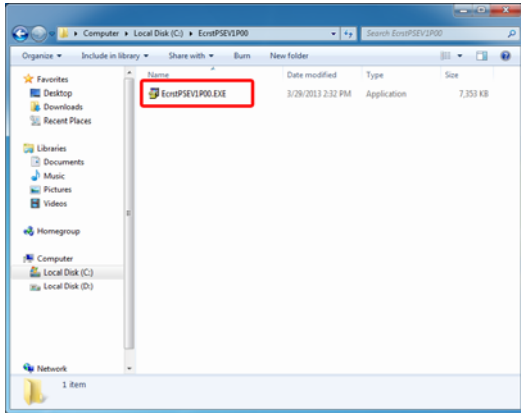
■ Required software

- Adobe Acrobat Ver. 5.0 or higher, or Adobe Reader Ver. 5.0 or higher
 - * The help manual for ECR Setting Tool is a pdf format document.

2.2 Installation of ECR Setting Tool

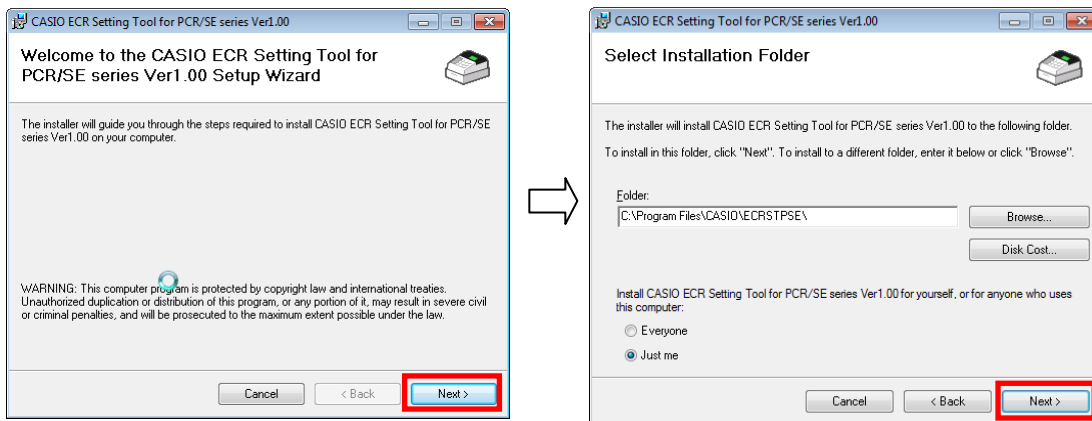
Access the administrator account from Windows login screen and install the ECR setting Tool on your PC.

1. Double click the .Exe file in the folder.



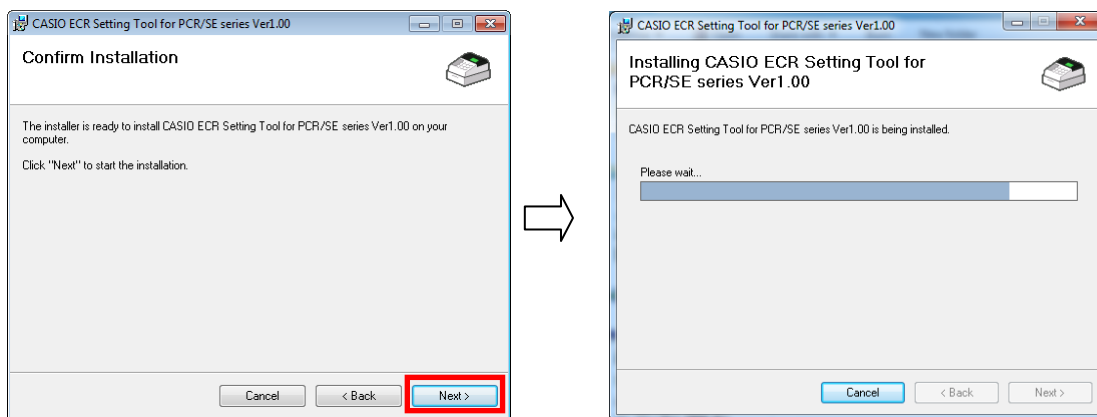
If the same software of other version is already installed, installation cannot continue. To configure or remove the existing software, use Add/Remove Programs on the Control Panel.

2. After a setup wizard screen is displayed, click [Next].
3. Designate a folder where you want to install the software, and then click [Next].

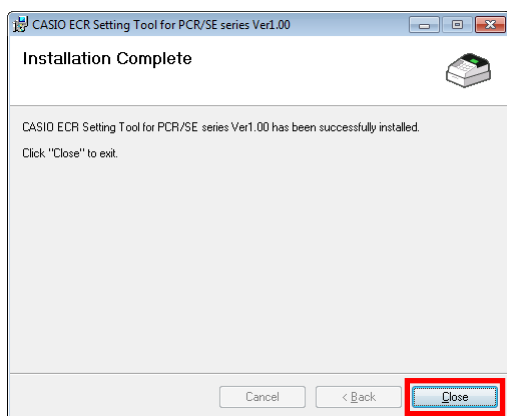


* Program will automatically default to a specific directory, but you can choose a different one or create your own using the "Browse" button.

4. In the Confirm Installation screen, click [Next].
Installation of ECR Setting Tool starts automatically.



5. In the Installation Complete screen, click [Close] to complete installation.

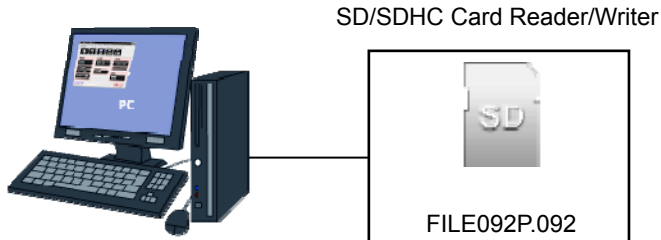


- The screenshots included in this guide are from the Windows 7.
- Please note that things may appear slightly different on your system depending on your version of Windows.

2.3 Startup and termination of ECR Setting Tool

2.3.1 Connecting a SD/SDHC card reader/writer

ECR Setting Tool reads/saves the setting file via the SD/SDHC card. Therefore, a SD/SDHC card reader/writer has to be connected to your PC beforehand.



1. Connect a SD/SDHC Card Reader/Writer to your PC.



If your PC is equipped with a SD/SDHC card slot, you can use it instead of an external SD/SDHC reader/writer.

2.3.2 Starting up ECR Setting Tool

1. Insert a SD/SDHC card into the SD/SDHC Card Reader or the SD/SDHC card slot of your PC.

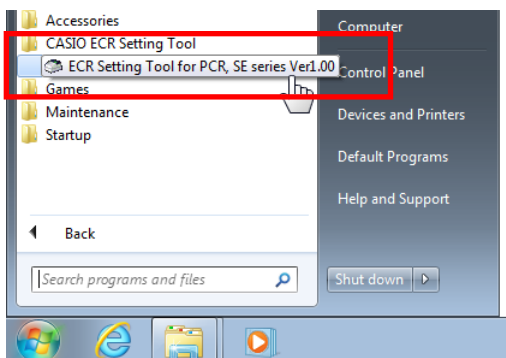
* Use the SD/SDHC card in which setting data exported by ECR is saved.

For setting data exporting procedure, refer to “2.4.2 (1) ECR’s setting file → Export to a SD/SDHC card (Operation on ECR side)”.

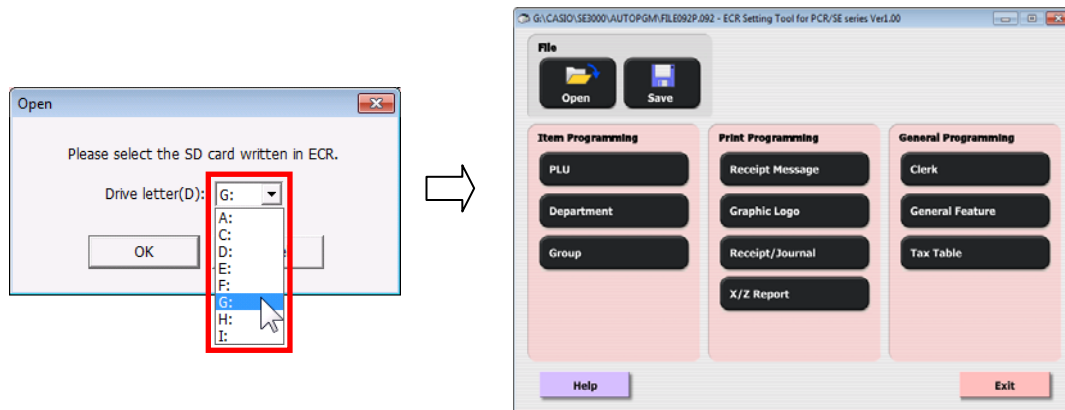
2. If a dialog box pops up, just click [X] on the upper right to close it.



3. Start from Windows Start menu.




- Select the drive in which the SD/SDHC card is installed, and then click [OK].



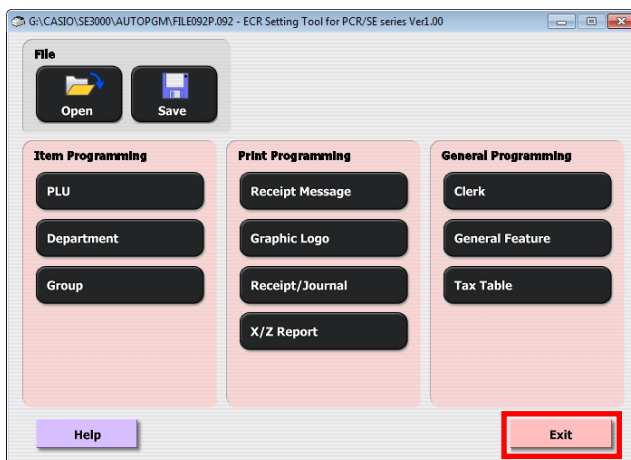
* Click [Cancel] to close the Open dialog box.

If the setting file is read successfully, all menus on the Menu screen are enabled.

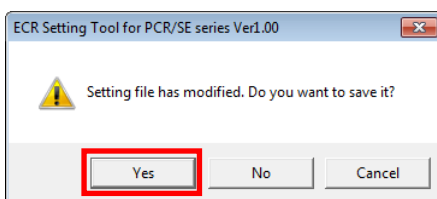
 <p>Notice</p>	<ul style="list-style-type: none"> • If there is no setting file in the SD/SDHC card, an error message “Can not find the program file.” will appear. • During Tool operation, do not remove the SD/SDHC card.
--	---

2.3.3 Terminating ECR Setting Tool

- Click [Exit] or [X] on the upper right of the screen.



- Click [Yes] for the dialog box asking if you want to save the setting data. ECR Setting Tool terminates and the Menu screen closes.



* Click [No] to terminate ECR Setting Tool without saving the modified data.

* Click [Cancel] to cancel the settings and return to the previous screen.



- If you haven't changed any settings, ECR Setting Tool will terminate without displaying the above dialog box.
- If the path to save the setting file (FILE092P.092) does not exist in the SD/SDHC card, the path "CASIO\SE3000\AUTOPGM" is automatically created.

Using <Save> menu before terminating ECR Setting Tool:

You can use <Save> menu to save the setting file (FILE092P.092) to the SD/SDHC card.

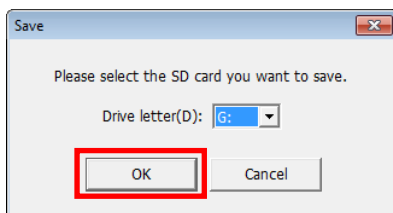
With this <Save> menu, you can save the setting file (FILE092P.092) to any drive.

For example, if you chose a new drive "C:", ECR Setting Tool automatically creates the following file path, and then saves the setting file (FILE092P.092) to it.

C:\CASIO\SE3000\AUTOPGM\FILE092P.092

1. Click <Save> on the Menu screen.

The Save dialog box opens.



2. Click [OK].

The current settings are saved to the SD/SDHC card.

* Click [Cancel] to cancel the settings and return to the previous screen.

* To change the drive you want to save the setting file, select a desired drive letter.

3. To terminate ECR Setting Tool, click [Exit] or [X] on the upper right of the Menu screen.

The Menu screen closes and ECR Setting Tool terminates.

2.4 Operation flow using a SD/SDHC card (ECR ↔ ECR Setting Tool)

General description of a SD/SDHC card to save the setting file (FILE092P.092) and the setting file operation between ECR and ECR Setting Tool via the SD/SDHC card are explained.

2.4.1 About a SD/SDHC card

A SD/SDHC card is used to transfer the data between ECR and ECR Setting Tool. Therefore, a SD/SDHC reader/writer must be connected to your PC, or a PC with the SD/SDHC card slot is required. Usable SD/SDHC card: 2GB, 4GB, 8GB, 16GB and 32GB. *class 4 or higher.



- miniSD/SDHC card and microSD/SDHC card cannot be used.
- For handling a SD/SDHC card, refer to the attached manual to the SD/SDHC card.

Data files to be read/saved in SD/SDHC card:

The file to be transferred between ECR Setting Tool and ECR is a setting file (FILE092P.092) that is saved to a SD/SDHC card. The setting file consists of the following data.

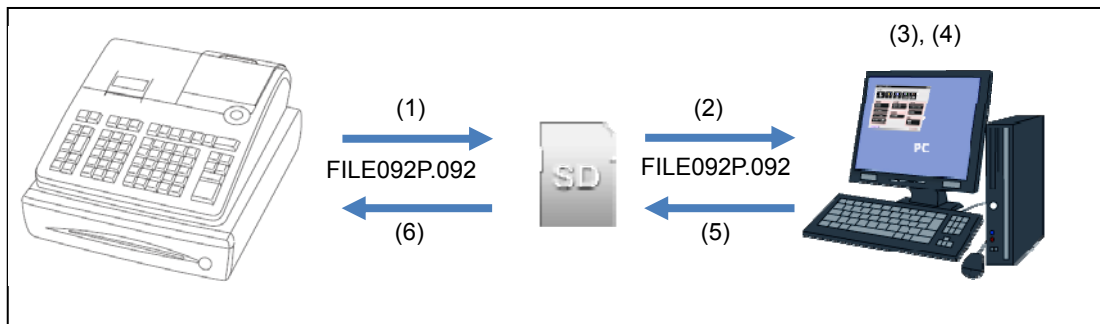
Data in the setting file (FILE092P.092):

Data	Description
Department settings	Department records are stored.
PLU settings	PLU item records are stored.
Group settings	Group records are stored.
Receipt message settings	Receipt message data is stored.
Graphic logo settings	Graphic logo data is stored.
Receipt/Journal settings	Receipt/Journal setting information is stored.
X/Z report settings	Daily X or Z report setting information is stored.
Clerk settings	Clerk records are stored.
General feature settings	General feature setting information is stored.
Tax table settings	Tax table setting information is stored.

2.4.2 Operation flow (ECR ↔ ECR Setting Tool)

The file transfers data between ECR and ECR Setting Tool via a SD/SDHC card. The following operation example is explained here.

- (1) ECR's setting file → Exporting to a SD/SDHC card (Operation on ECR side)
- (2) Setting file in the SD/SDHC card → Reading it by ECR Setting Tool
- (3) Editing department items (Operation example)
- (4) Editing graphic logo to be printed on the receipt (Operation example)
- (5) Edited setting file → Saving it to the SD/SDHC card by ECR Setting Tool
- (6) Setting file in the SD/SDHC card → Importing it by ECR (Operation on ECR side)

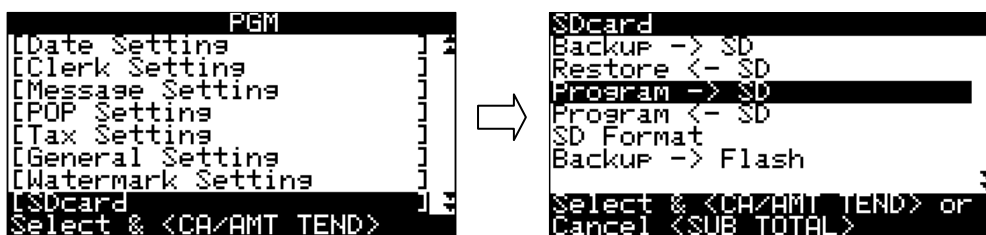


(1) ECR's setting file → Exporting to a SD/SDHC card (Operation on ECR side)

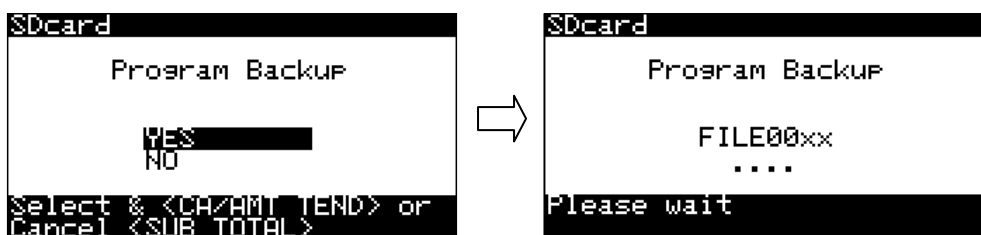
On ECR, export the ECR's setting file to a SD/SDHC card.

When you use a new SD/SDHC card, format it first.

1. Insert a SD/SDHC card into the SD card slot of ECR.
2. Turn the Mode switch of ECR to PGM position and select [SD Setting]. Then, press the CA/AMT
TEND key.
3. Select [Program→SD] and press the CA/AMT
TEND key.



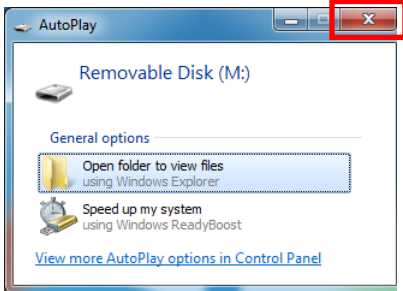
4. Select [YES] and press the CA/AMT
TEND key.
5. After for a while, the display indicates "Backup complete". Then, press the SUB
TOTAL key.



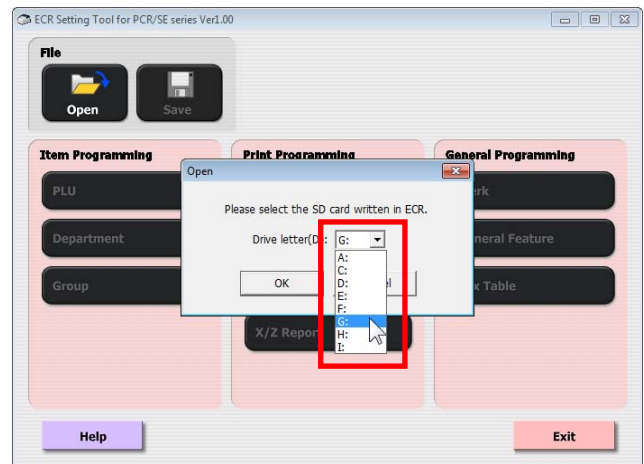
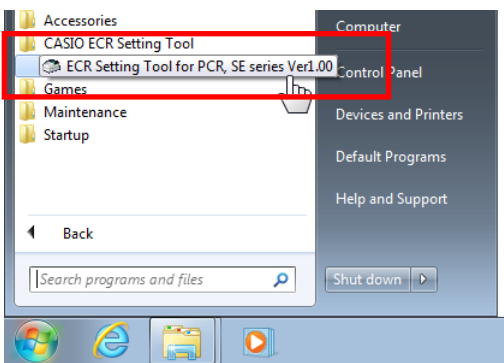
(2) Setting file in the SD/SDHC card → Reading it by ECR Setting Tool

Read the setting file from the SD/SDHC card with ECR Setting Tool. The following shows an example how to read it.

1. Insert the SD/SDHC card to a SD/SDHC card reader/writer that is connected to your PC, or insert it to a SD/SDHC card slot of your PC.
2. In the popped up dialog box, click [X] on the upper right to close it.



3. Select <ECR Setting Tool for PCR, SE series Ver1.00> from the start menu to run ECR Setting Tool.
4. In the Open dialog box, select the drive in which the SD/SDHC card is installed, and then click [OK].
The setting file is read from the SD/SDHC card and the Menu screen becomes active.

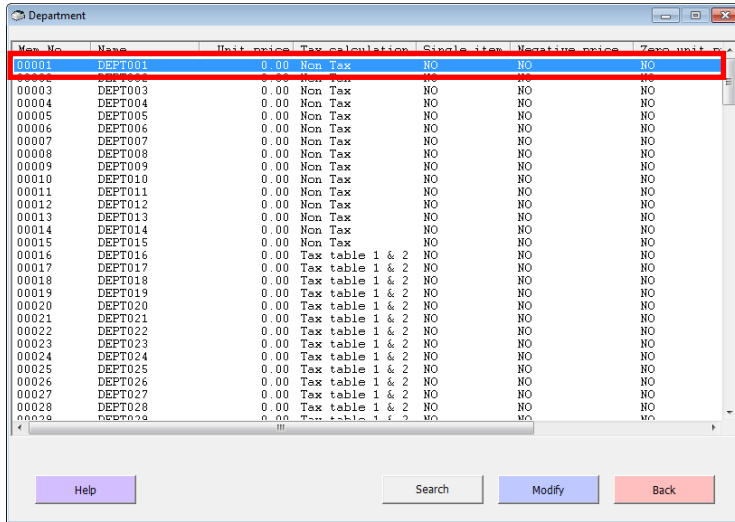


(3) Editing department items (Operation example)

As an operation example, change the name, unit price and tax calculation status.

For detailed operation, refer to “5.2 <Department>”

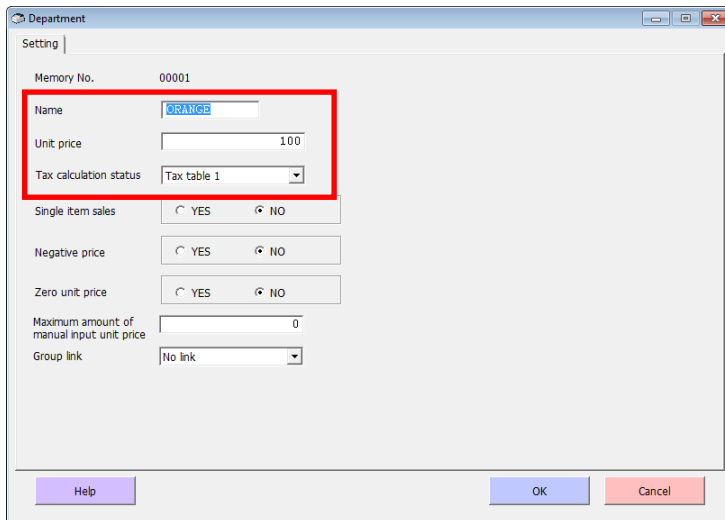
1. Click <Department> on the Menu screen.
2. Select a target department and click [Modify] to open the Department setting screen, or double-click the target department.



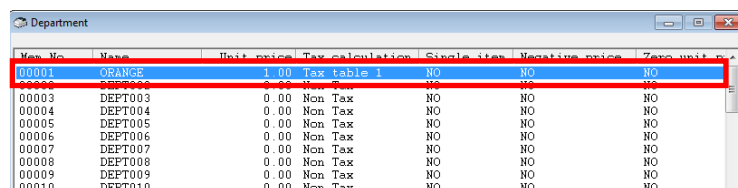
3. Modify the settings for Name, Unit price and Tax calculation status, and click [OK]. Then, the screen returns to the previous one.

e.g.: Name: ORANGE, Unit price: 100 (\$1.00), Tax calculation status: Tax Table 1

* In the input box, Name for example, you can specify double width characters. Inputting “_A” instead of “A” will result in “A” of double width character on ECR side.



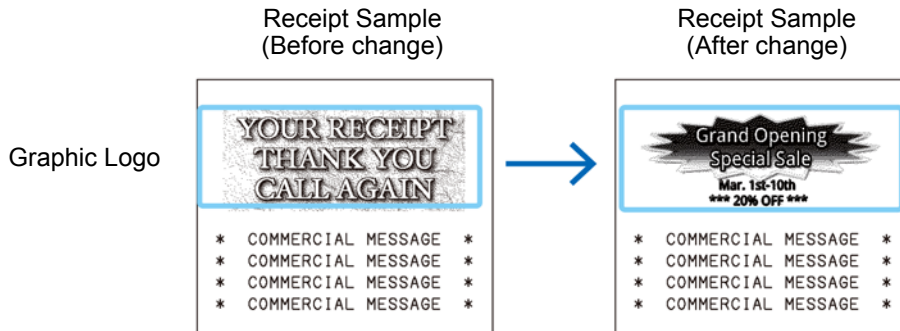
4. Check that the changed items are correctly reflected on the screen, and click [Back]. Then, the screen returns to the Menu screen.



(4) Editing graphic logo to be printed on the receipt (Operation example)

Change the graphic logo to be printed on the receipt from the default image data to a new one.

For detailed operation, refer to “5.5 <Graphic Logo>”.

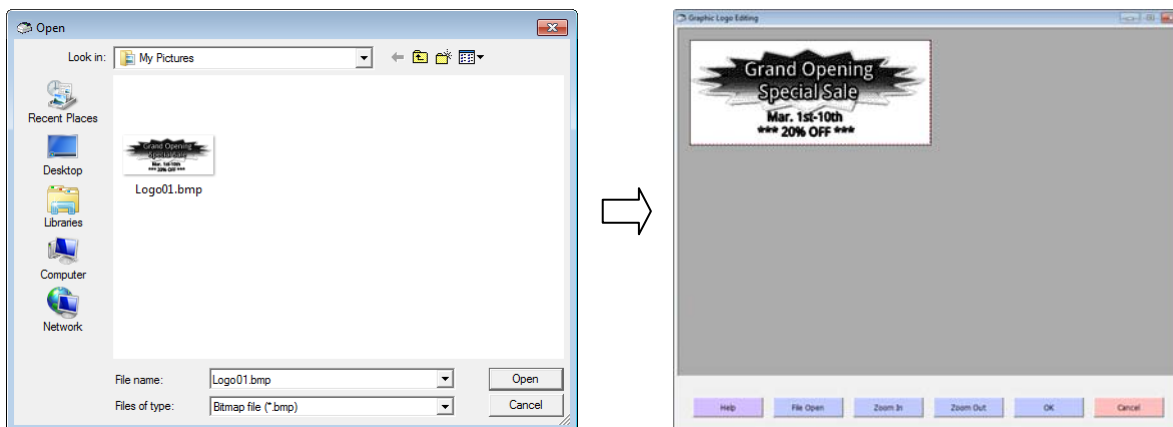



In the Graphic Logo area, either an image or characters can be printed. To print an image, you need to select <Graphic Logo> instead of <Character> in item “Logo message” in “5.4 <Receipt Message>”.

1. Prepare an image data of bitmap format you want to use as Graphic Logo.
2. Click <Graphic Logo> on the Menu screen.
3. Click [Modify] to open the Graphic Logo Editing screen.
4. Click [File Open] to open the Open dialog box.



5. In the Open dialog box, select an image data (extension: “.bmp”) you want, and click [Open].
The selected image data will appear on the Graphic Logo Editing screen
 - Place the image inside the blank space surrounded by a black line. The image within that space will be printed on the receipt.
 - If the image is too large, click [Zoom Out]. If it is too small, click [Zoom In]. To move it, first point it with your mouse left button and then drag it.





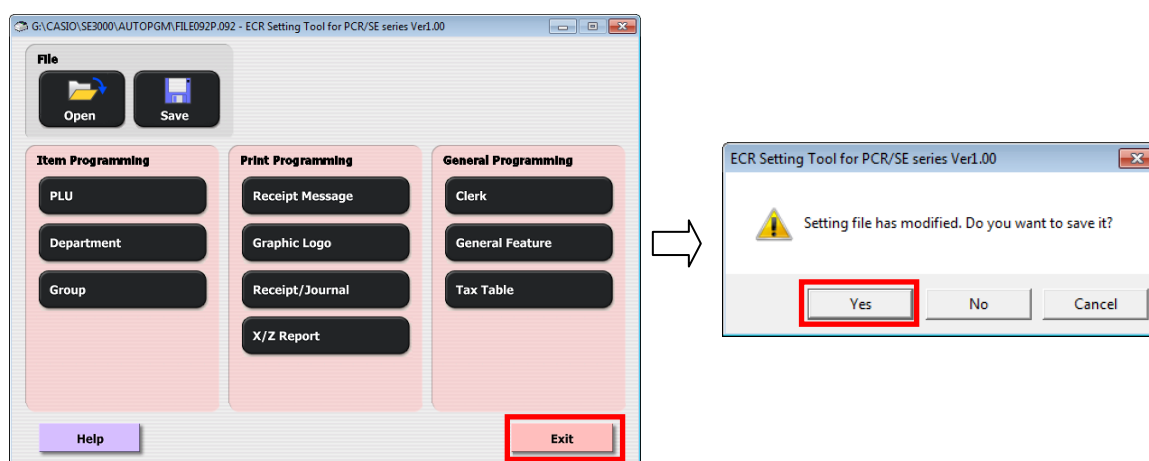
Even if the original data is a color image, it is automatically converted into black and white image.

6. After editing the image, click [OK] and then [Back] to return to the Menu screen.

(5) Edited setting file → Saving it to the SD/SDHC card by ECR Setting Tool



1. In the Menu screen, click [Exit] or [X] on the upper right of the screen.
2. The dialog box asks you whether to save the setting data or not. Click [Yes] to save it and close the screen.

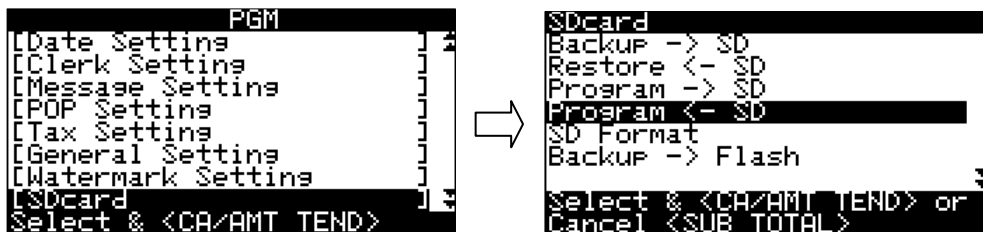
* You can save the setting data by clicking <Save> before exiting the screen.





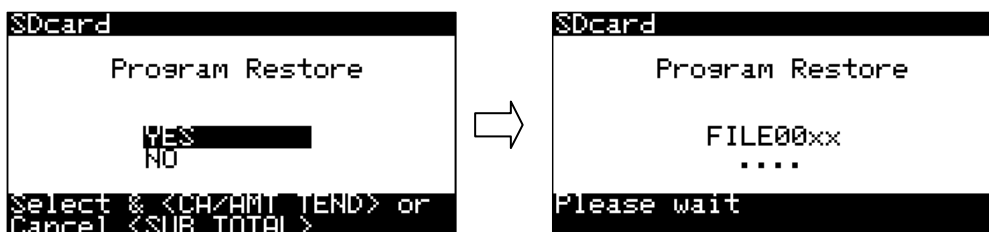
(6) Setting file in the SD/SDHC card → Importing it by ECR (Operation on ECR side)

On ECR, import the setting data saved in the SD/SDHC card.

1. Insert the SD/SDHC card into the SD card slot of ECR.
2. Turn the Mode switch of ECR to PGM position and select [SD Setting]. Then, press the  key.
3. Select [Program←SD] and press the  key.



4. Select [YES] and press the  key.
5. After for a while, the display indicates "Restore complete". Press the  key to complete the operation.



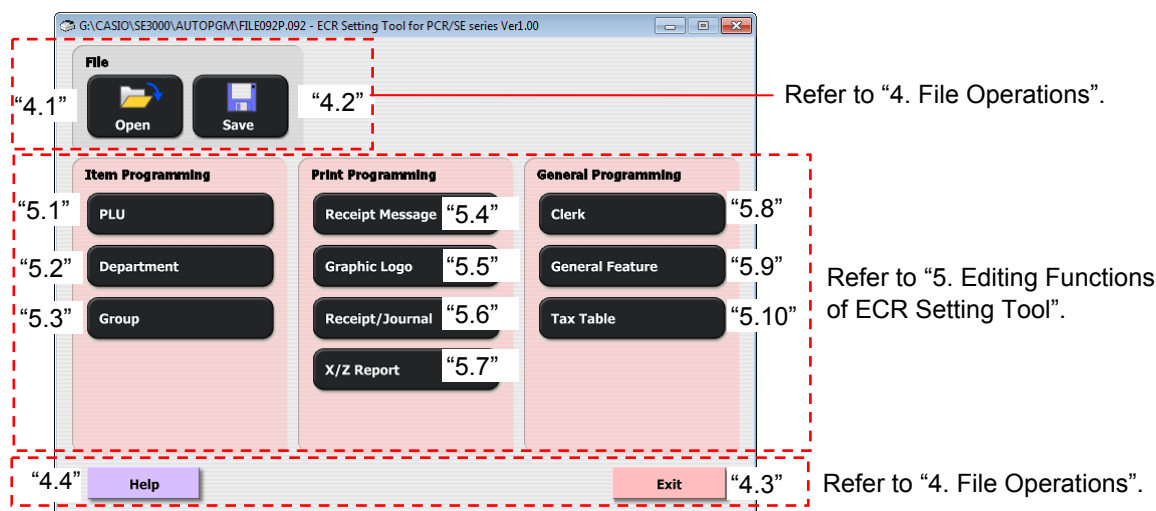
3. Menu Screen of ECR Setting Tool

When ECR Setting Tool is started up, the Menu screen opens.

* To start up ECR Setting Tool, refer to “2.3 Startup and termination of ECR Setting Tool”.

3.1 Menu screen

In the Menu screen, file operations and editing operations are possible.



The menus in the Menu screen are as follows.

● File operation menus

Menu name	Description
<Open>	Can open a setting file from the selected drive.
<Save>	Can save the edited setting file to the selected drive. File path: Drive name:\CASIO\SE3000\AUTOPGM\FILE092P.092

● Setting menus

Item	Menu name	Description
Item Programming	<PLU>	Makes settings for PLU items.
	<Department>	Makes settings for item departments.
	<Group>	Makes settings for item groups.
Print Programming	<Receipt Message>	Makes settings for receipt messages.
	<Graphic Logo>	Makes settings for graphic logos.
	<Receipt/Journal>	Makes settings for receipt/journal print.
	<X/Z Report>	Makes settings for daily X/Z report print.
General Programming	<Clerk>	Makes settings for clerks.
	<General Feature>	Makes settings for operational features.
	<Tax Table>	Makes settings for tax tables.

● Menu screen buttons

Button name	Description
[Exit]	Terminates ECR Setting Tool. Clicking [X] on the upper right can also terminate it.
[Help]	Opens this Utilization Guide of the pdf format.

4. File Operations

File operations of ECR Setting Tool are explained here.

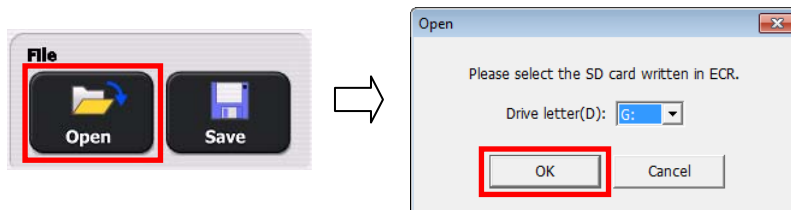
The file operations are made with the following file menus and operation buttons in the Menu screen.

Name	Description
<Open>	Can open a setting file from the selected drive.
<Save>	Can save the edited setting file to the selected drive. File path: Drive name:\CASIO\SE3000\AUTOPGM\FILE092P.092
[Exit]	Terminates ECR Setting Tool. Clicking [X] on the upper right can also terminate it.
[Help]	Opens this Utilization Guide of the pdf format.

4.1 <Open> menu

The <Open> menu can open an existing setting file.

1. Click <Open> on the Menu screen.
Open dialog box is displayed.



2. Select a destination drive in which a setting file (FILE092P.092) is stored, and click [OK].
The setting file is read from the selected drive.

* Click [Cancel] to cancel the settings and return to the previous screen.

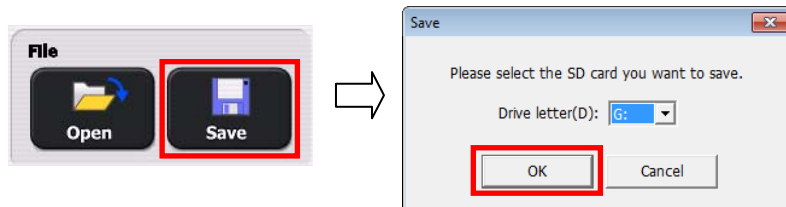


If FILE092P.092 file does not exist in the SD/SDHC card, an error message “Can not find the program file.” appears. For details, refer to “6.1 Error Message List”.

4.2 <Save> menu

The <Save> menu saves the edited setting file to a selected drive.

1. Click <Save> in the Menu screen.
The Save dialog box opens.



2. Select a drive you want to save the setting file, and click [OK].
The current setting file is saved to the SD/SDHC card.
* Click [Cancel] to cancel the settings and return to the previous screen.

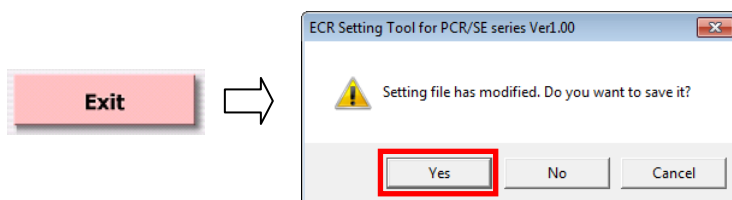


If a file path to save the setting file does not exist in the selected drive, ECR Setting Tool automatically creates the path "CASIO\SE3000\AUTOPGM" to save FILE092P.092.

4.3 [Exit] button

The [Exit] button exits ECR Setting Tool.

1. Click [Exit] or [X] on the upper right of the Menu screen.
The Confirmation dialog box opens.
* ECR Setting Tool terminates without opening the Confirmation dialog box if <Save> menu operation is done immediately before the exit operation or if no settings have been changed.

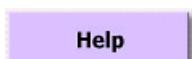


2. Click [Yes].
The edited setting file (FILE092P.092) is saved to the SD/SDHC card and ECR Setting Tool terminates.
* Click [No] to exit without saving the current setting file.
* Click [Cancel] to cancel the settings and return to the previous screen.



If a file path to save the setting file does not exist in the selected drive, ECR Setting Tool automatically creates the path "CASIO\SE3000\AUTOPGM" to save FILE092P.092.

4.4 [Help] button



Opens this Utilization Guide of pdf format.

5. Editing Functions of ECR Setting Tool

Editing operations of ECR Setting Tool are explained here.

The editing operations are made with the following setting menus in the Menu screen.

Item	Menu name	Description
Item Programming	<PLU>	Makes settings for PLU items.
	<Department>	Makes settings for item departments.
	<Group>	Makes settings for item groups.
Print Programming	<Receipt Message>	Makes settings for receipt messages.
	<Graphic Logo>	Makes settings for graphic logos.
	<Receipt/Journal>	Makes settings for receipt/journal print.
	<X/Z Report>	Makes settings for daily X/Z report print.
General Programming	<Clerk>	Makes settings for clerks.
	<General Feature>	Makes settings for operational features.
	<Tax Table>	Makes settings for tax tables.



Do not disconnect the SD/SDHC card during editing operation. The edited data will not be saved correctly if it is once removed.

5.1 <PLU>

The <PLU> menu edits the settings for PLU (Price Look Up) items. It is used to define the item information such as names and unit prices.

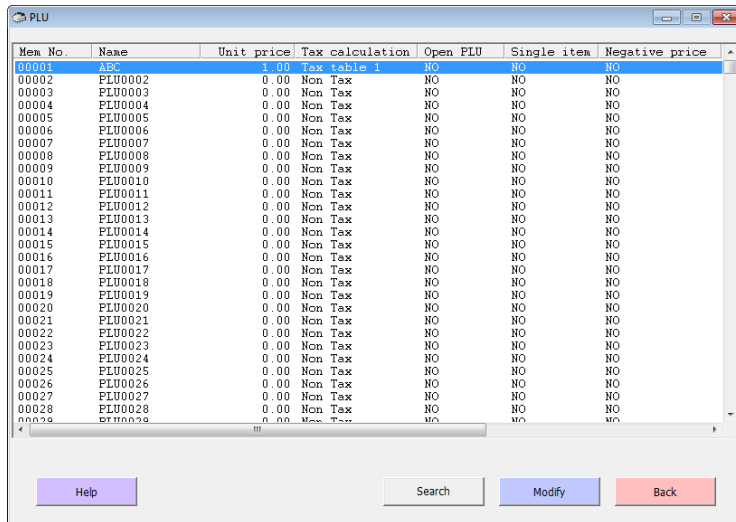
5.1.1 PLU list

1. Click <PLU> on the Menu screen.

The PLU list screen is displayed and the registered PLU information is shown.

2. Select a target PLU item and click [Modify], or double-click the target PLU item.

The PLU item setting screen for the selected PLU item is displayed.



Mem. No.	Name	Unit price	Tax calculation	Open PLU	Single item	Negative price
00001	ABC	1.00	Tax table 1	NO	NO	NO
00002	PLU0002	0.00	Non Tax	NO	NO	NO
00003	PLU0003	0.00	Non Tax	NO	NO	NO
00004	PLU0004	0.00	Non Tax	NO	NO	NO
00005	PLU0005	0.00	Non Tax	NO	NO	NO
00006	PLU0006	0.00	Non Tax	NO	NO	NO
00007	PLU0007	0.00	Non Tax	NO	NO	NO
00008	PLU0008	0.00	Non Tax	NO	NO	NO
00009	PLU0009	0.00	Non Tax	NO	NO	NO
00010	PLU0010	0.00	Non Tax	NO	NO	NO
00011	PLU0011	0.00	Non Tax	NO	NO	NO
00012	PLU0012	0.00	Non Tax	NO	NO	NO
00013	PLU0013	0.00	Non Tax	NO	NO	NO
00014	PLU0014	0.00	Non Tax	NO	NO	NO
00015	PLU0015	0.00	Non Tax	NO	NO	NO
00016	PLU0016	0.00	Non Tax	NO	NO	NO
00017	PLU0017	0.00	Non Tax	NO	NO	NO
00018	PLU0018	0.00	Non Tax	NO	NO	NO
00019	PLU0019	0.00	Non Tax	NO	NO	NO
00020	PLU0020	0.00	Non Tax	NO	NO	NO
00021	PLU0021	0.00	Non Tax	NO	NO	NO
00022	PLU0022	0.00	Non Tax	NO	NO	NO
00023	PLU0023	0.00	Non Tax	NO	NO	NO
00024	PLU0024	0.00	Non Tax	NO	NO	NO
00025	PLU0025	0.00	Non Tax	NO	NO	NO
00026	PLU0026	0.00	Non Tax	NO	NO	NO
00027	PLU0027	0.00	Non Tax	NO	NO	NO
00028	PLU0028	0.00	Non Tax	NO	NO	NO

[Help] Opens this Utilization Guide.

[Search] Opens the search dialog box to search for a target PLU item by Memory No. or Name.

[Modify] Displays the PLU item setting screen to change the settings for the selected PLU item.

[Back] Returns to the previous screen.

5.1.2 PLU item settings

1. In the PLU item setting screen, set the following items for the selected PLU item.

Memory No.	Selected Memory No. is displayed.
Name	Within 12 characters.
Unit price	Within 6 digits, enter a unit price without using a currency sign and a decimal point. (e.g. Enter "200" for "\$2.00".)
Tax calculation status	Designate the tax table used for tax calculation. According to the setting data read from ECR, one of four types applies and the tax system (e.g. Non Tax or T/S1) belongs to that type is selectable. VAT(Single Tax): Non Tax, T/S1, T/S2, T/S3, T/S4 US: T/S1, T/S2, T/S1&2, T/S3, T/S1&3, T/S2&3, Tax All Canada: Non Tax, T/S1, T/S2, T/S3, T/S4, T/S1&2, T/S1&3, T/S1&4 Singapore: Same as above US. * T/S1 to 4: Tax table 1 to Tax table 4 on the Tax table screen. (Refer to "5.10 <Tax Table> menu".)
Open PLU	Select <YES> for a PLU item whose price may be changed. In the Open PLU, unlike a normal PLU item whose unit price is preset, the unit price cannot be registered by simply designating the PLU No. So, before pressing the <input type="button" value="PRICE"/> key on ECR, you need to enter the unit price manually to register it.
Single item sales	Select <YES> to issue the receipt and finalize the transaction by simply registering the PLU. This function will be used when issuing food tickets, etc.
Negative price	Select <YES> to treat the set unit price as negative unit price. This function will be used for fixed amount coupons, for example, but not for ordinary items.
Zero unit price	Select <YES> for special items that treat the preset unit price as price zero.
Dept link	Select a department from the department link destination list to link to this PLU item. The department can collect the PLU items set here.
Group link	Select a group from the group link destination list to link to this PLU item. The group can collect the PLU items set here.

- After setting the above items, click [OK]. Then, the screen returns to the previous one.

- [Help]** Opens this Utilization Guide.
- [OK]** Finalizes the settings and returns to the previous screen.
- [Cancel]** Cancels the settings and returns to the previous screen.

5.2 <Department>

The <Department> menu edits the settings for departments. It is used to define the item information such as names and unit prices.

5.2.1 Department list

- Click <Department> on the Menu screen.
The Department list screen is displayed and the registered department information is displayed.
- Select a target department and click [Modify], or double-click the target department.
The Department setting screen for the selected department is displayed.

Mem. No.	Name	Unit price	Tax calculation	Single item	Negative price	Zero unit price
00001	DEPT0001	0.00	Non Tax	NO	NO	NO
00002	DEPT0002	0.00	Non Tax	NO	NO	NO
00003	DEPT0003	0.00	Non Tax	NO	NO	NO
00004	DEPT0004	0.00	Non Tax	NO	NO	NO
00005	DEPT0005	0.00	Non Tax	NO	NO	NO
00006	DEPT0006	0.00	Non Tax	NO	NO	NO
00007	DEPT0007	0.00	Non Tax	NO	NO	NO
00008	DEPT0008	0.00	Non Tax	NO	NO	NO
00009	DEPT0009	0.00	Non Tax	NO	NO	NO
00010	DEPT0010	0.00	Non Tax	NO	NO	NO
00011	DEPT0011	0.00	Non Tax	NO	NO	NO
00012	DEPT0012	0.00	Non Tax	NO	NO	NO
00013	DEPT0013	0.00	Non Tax	NO	NO	NO
00014	DEPT0014	0.00	Non Tax	NO	NO	NO
00015	DEPT0015	0.00	Non Tax	NO	NO	NO
00016	DEPT0016	0.00	Tax table 1 & 2	NO	NO	NO
00017	DEPT0017	0.00	Tax table 1 & 2	NO	NO	NO
00018	DEPT0018	0.00	Tax table 1 & 2	NO	NO	NO
00019	DEPT0019	0.00	Tax table 1 & 2	NO	NO	NO
00020	DEPT0020	0.00	Tax table 1 & 2	NO	NO	NO
00021	DEPT0021	0.00	Tax table 1 & 2	NO	NO	NO
00022	DEPT0022	0.00	Tax table 1 & 2	NO	NO	NO
00023	DEPT0023	0.00	Tax table 1 & 2	NO	NO	NO
00024	DEPT0024	0.00	Tax table 1 & 2	NO	NO	NO
00025	DEPT0025	0.00	Tax table 1 & 2	NO	NO	NO
00026	DEPT0026	0.00	Tax table 1 & 2	NO	NO	NO
00027	DEPT0027	0.00	Tax table 1 & 2	NO	NO	NO
00028	DEPT0028	0.00	Tax table 1 & 2	NO	NO	NO
00029	DEPT0029	0.00	Tax table 1 & 2	NO	NO	NO

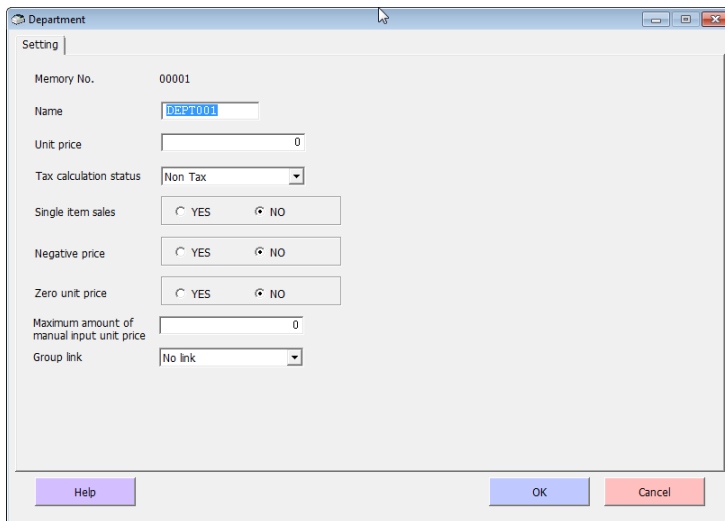
- [Help]** Opens this Utilization Guide.
- [Search]** Opens the search dialog box to search for a target department by Memory No. or Name.
- [Modify]** Displays the Department setting screen to change the settings for the selected department.
- [Back]** Returns to the previous screen.

5.2.2 Department settings

1. In the Department setting screen, set the following items for the selected department.

Memory No.	Selected Memory No. is displayed.
Name	Within 12 characters.
Unit price	Within 6 digits, enter a unit price without using a currency sign and a decimal point. (e.g. Enter “200” for “\$2.00”.)
Tax calculation status	Designate the tax system used for tax calculation. (Refer to item “Tax calculation status” in “5.1.2 PLU settings”.)
Single item sales	Select <YES> to issue a receipt and finalize the transaction by simply registering the department. This function will be used when issuing food tickets, etc.
Negative price	Select <YES> to treat the set unit price as negative unit price. This function will be used for fixed amount coupons, etc., but not for ordinary items.
Zero unit price	Select <YES> for special items that treat the preset unit price as price zero
Maximum amount of manual input price	Set the maximum digits for manual input price within 6 digits. Currency sign and decimal point are not displayed. With this function, input error of the price exceeding the set limit (HAL (High amount limit)) here can be avoided.
Group link	Select a group from the group link destination list to link to this department. The group can collect the departments set here.

2. After setting the above items, click [OK]. Then, the screen returns to the previous one.



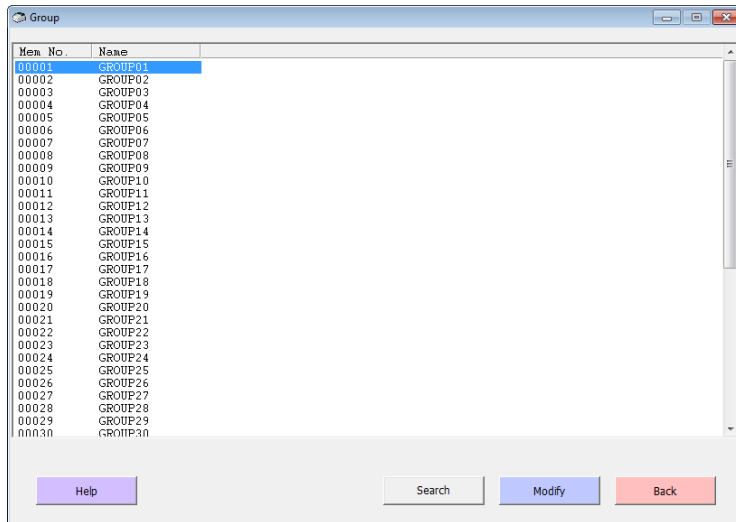
[Help]	Opens this Utilization Guide.
[OK]	Finalizes the settings and returns to the previous screen.
[Cancel]	Cancels the settings and returns to the previous screen.

5.3 <Group>

The <Group> menu edits the group names.

5.3.1 Group list

1. Click <Group> on the Menu screen.
The Group list screen is displayed and the registered group information is displayed.
2. Select a target group and click [Modify], or double-click the target group.
The Group setting screen for the selected group is displayed.



- [Help]** Opens this Utilization Guide.
- [Search]** Opens the search dialog box to search for a target group by Memory No. or Name.
- [Modify]** Displays the Group setting screen to change the settings for the selected group.
- [Back]** Returns to the previous screen.

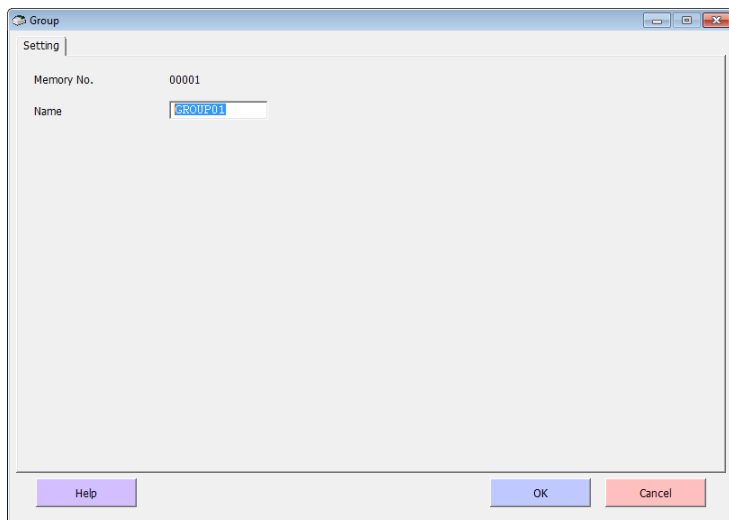
5.3.2 Group settings

1. Set the group name for the selected group.

Memory No. Selected Memory No. is displayed.

Name Within 12 characters.

2. After setting the above item, click [OK]. Then, the screen returns to the previous one.



[Help] Opens this Utilization Guide.

[OK] Finalizes the settings and returns to the previous screen.

[Cancel] Cancels the settings and returns to the previous screen.

5.4 <Receipt Message>

Hot to set logo, commercial and bottom messages that will be printed on the receipt is explained here. Messages will be printed on the receipt as shown below.

Logo message
When <Character>
is selected here.

Commercial
message

Bottom
message

Receipt Sample

Receipt Sample

Logo message
When <Graphic Logo> is
selected.
For registration, refer to
"5.5 <Graphic Logo>".

Receipt Sample	Receipt Sample
<p>***** * THANK YOU * ** CALL AGAIN ** *****</p>	<p>YOUR RECEIPT THANK YOU CALL AGAIN</p>
<p>* COMMERCIAL MESSAGE * * COMMERCIAL MESSAGE * * COMMERCIAL MESSAGE * * COMMERCIAL MESSAGE *</p>	<p>* COMMERCIAL MESSAGE * * COMMERCIAL MESSAGE * * COMMERCIAL MESSAGE * * COMMERCIAL MESSAGE *</p>
<p>REG 20-06-2013 11:58 C01 0001 000123</p>	<p>REG 20-06-2013 11:58 C01 0001 000123</p>
<p>1 DEPT001 T1 \$1.00 1 DEPT002 T1 \$2.00 5 DEPT003 \$5.00</p>	<p>1 DEPT001 T1 \$1.00 1 DEPT002 T1 \$2.00 5 DEPT003 \$5.00</p>
<p>7 No</p>	<p>7 No</p>
<p>TA1 \$3.00 TX1 \$0.15 TL \$8.15 CASH \$10.00 CG \$1.85</p>	<p>TA1 \$3.00 TX1 \$0.15 TL \$8.15 CASH \$10.00 CG \$1.85</p>
<p>*** BOTTOM MESSAGE *** *** BOTTOM MESSAGE *** *** BOTTOM MESSAGE *** *** BOTTOM MESSAGE ***</p>	<p>*** BOTTOM MESSAGE *** *** BOTTOM MESSAGE *** *** BOTTOM MESSAGE *** *** BOTTOM MESSAGE ***</p>
<p>New Year Sale 1st Anniversary 10% OFF</p> <p>HAPPY NEW YEAR</p>	<p>New Year Sale 1st Anniversary 10% OFF</p> <p>HAPPY NEW YEAR</p>

5.4.1 Receipt message settings

1. Click <Receipt Message> on the Menu screen.

The Receipt Message screen is displayed.

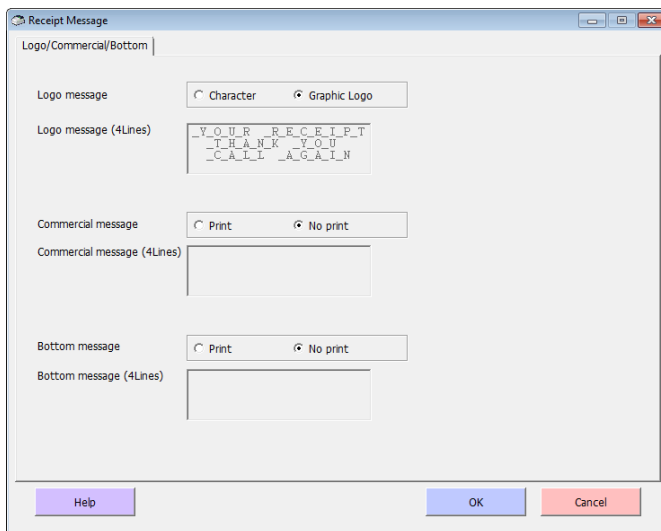
2. Set the following items.

Logo message, Select whether to print a logo message on the receipt in a text form or graphic form.
Logo message (4 Lines) When <Character> is selected, the logo message input box becomes active to allow text input. (4-line x 24-character. Max. 64 characters)
When <Graphic Logo> is selected, a registered logo is printed. (For registering it, refer to “5.5 <Graphic Logo>”.)

Commercial message, Select whether to print a commercial message on the receipt or not.
Commercial message (4 Lines) When <Print> is selected, the commercial message input box becomes active to allow text input. (4-line x 24-character. Max. 64 characters)

Bottom message, Select whether to print a bottom message on the receipt or not.
Bottom message (4 Lines) When <Print> is selected, the bottom message input box becomes active to allow text input. (4-line x 24-character. Max. 64 characters)

3. After setting the above items, click [OK]. Then, the screen returns to the previous one.



[Help] Opens this Utilization Guide.

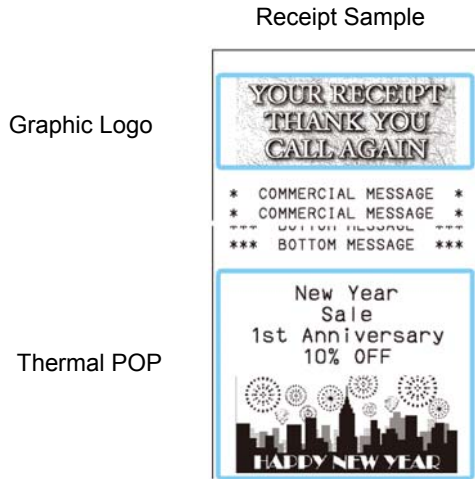
[OK] Finalizes the settings and returns to the previous screen.

[Cancel] Cancels the settings and returns to the previous screen.

5.5 <Graphic Logo>

The <Graphic Logo> menu sets or edits a graphic logo and thermal POP that will be printed on the receipt. Each image being set will be printed on the receipt as shown below.

* By default, the following graphic logo will be displayed. No thermal POP image data is provided.



- To print a graphic logo on the receipt, select <Graphic Logo> in item “Logo message” in “5.4 <Receipt Message>”. If <Character> is selected, the set text is printed instead of the graphic logo registered here.
- To print a thermal POP, you need to register it here. To print it on the receipt, select <YES> in item “Thermal POP advertising” in “5.6 <Receipt/Journal>”.

5.5.1 Preparation of graphic logo and thermal POP image data

To print a graphic logo and thermal POP on the receipt, you need to prepare images you want.

The following table shows the specification for both images.

* The image size shown below corresponds to the image area printed on the receipt. Even if an image is larger or smaller than this image size, you can resize it with the Zoom In and Zoom Out functions and also by dragging it with the mouse.

Image data	Data format	Image size
Graphic logo	Bitmap	384×168 dots
Thermal POP	Bitmap	384×392 dots

5.5.2 Graphic logo/thermal POP list

1. Click <Graphic Logo> on the Menu screen.

The Graphic Logo screen is displayed.

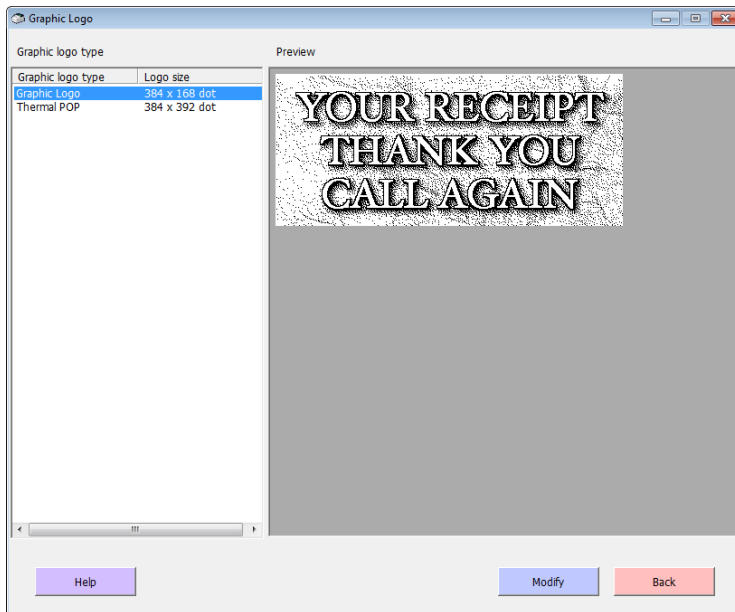
There are two graphic types, Graphic Logo and Thermal POP. In the Preview area, the image of the selected type is shown.

* By default, graphic logo (YOUR RECEIPT THANKS YOU CALL AGAIN) will be displayed in the Preview area. If you had already registered your own graphic image, it will appear.

* The image for thermal POP is not provided by default. So, no image will appear but blank space until you register an image for thermal POP.

2. To register an image data, first select either “Graphic Logo” or “Thermal POP” in Graphic logo type column, and then click [Modify].

The Graphic Logo editing screen is displayed.



[Help] Opens this Utilization Guide.

[Back] Returns to the previous screen.

5.5.3 Editing graphic logo/thermal POP

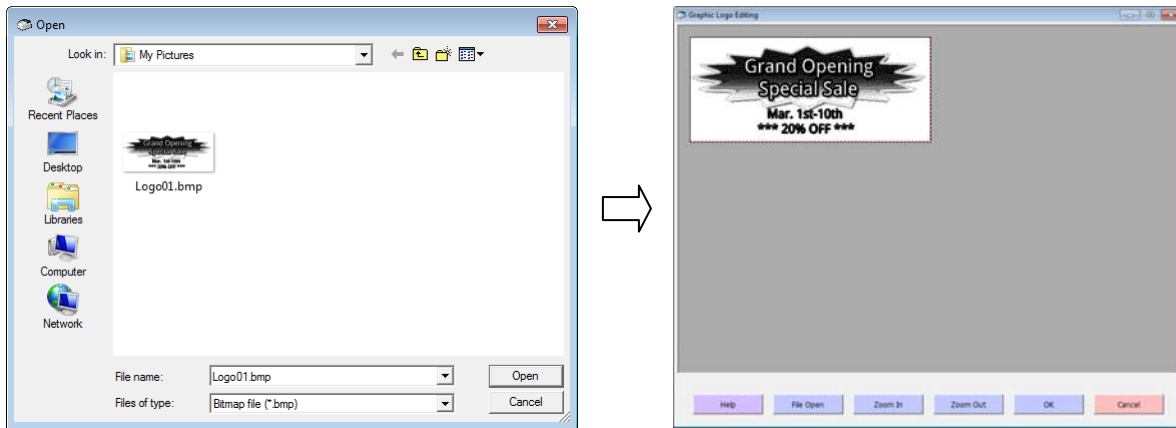
In the Graphic Logo editing screen, you can read an image data and resize it as required to fit to the intended image area. You can resize the image with Zoom In and Zoom Out functions and also by dragging it with the mouse left button.



- | | |
|--------------------|--|
| [Help] | Opens this Utilization Guide. |
| [File Open] | Open dialog box opens to read the image you want. |
| [Zoom In] | Increases the size of the image. |
| [Zoom Out] | Reduces the size of the image. |
| [OK] | Finalizes the settings and returns to the previous screen. |
| [Cancel] | Cancels the settings and returns to the previous screen. |

Reading an image:

1. Click [File Open] on the Graphic Logo editing screen.
Open dialog box opens.
 2. Select the folder in which the image data (.bmp) you want to read is stored, and click [Open].
The read data is displayed in the Graphic Logo editing screen.
- * Click [Cancel] to simply close the screen.



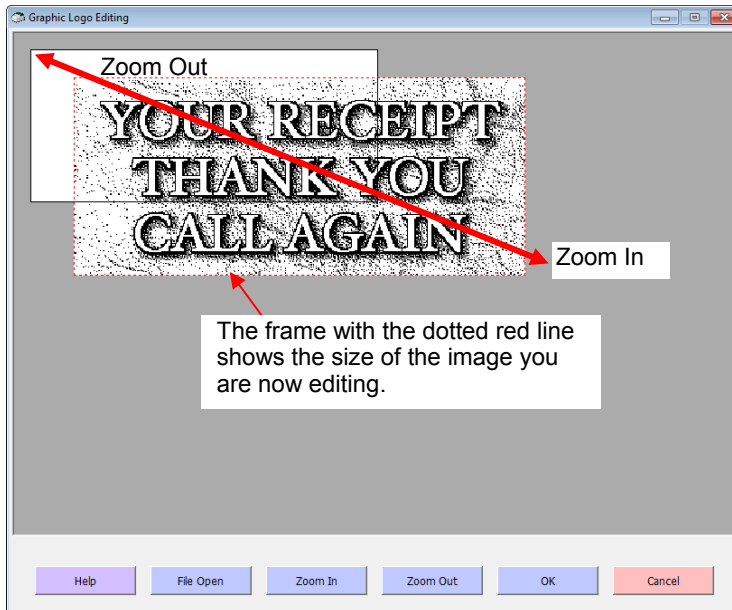
3. To resize the image, proceed to the following “Editing the image:”.
If no editing is necessary, click [OK] to return to the previous screen.



Even if the original data is a color image, it is automatically converted into black and white image.

Editing the image:

1. Edit the image by the combination of buttons [Zoom In] / [Zoom Out] and the left button of the mouse.
 - * The image inside the blank area surrounded by the solid line will be printed on the receipt. Put the whole image or a part of the image in that blank area.
 - For larger image, click [Zoom Out]. Each time you click it, its size will be reduced.
 - For smaller image, click [Zoom In]. Each time you click it, its size will be increased.
 - To adjust the image position, fist select it with the left mouse button, and then move it freely by dragging.
2. After editing the image, click [OK]. Then, the screen returns to the previous one.



5.6 <Receipt/Journal>

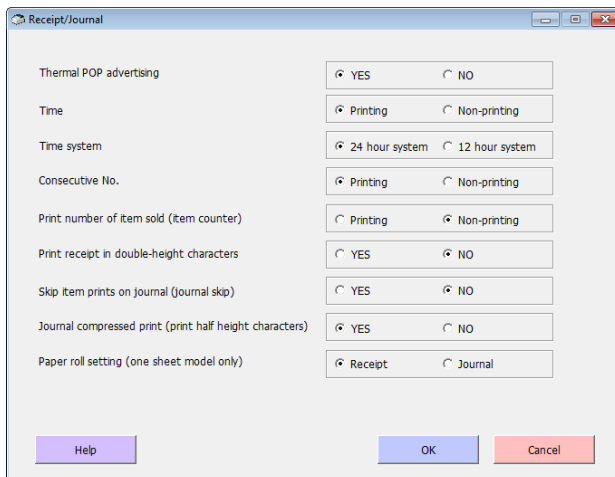
The <Receipt/Journal> menu edits the settings for receipt/journal printing.

5.6.1 Receipt/journal settings

1. Click <Receipt/Journal> on the Menu screen.
The Receipt/Journal screen is displayed.
2. Set the following items for the receipt/journal.

Thermal POP advertising	Change over whether to print the thermal POP image on the receipt or not.
Time	Change over whether to print the time or not.
Time system	Change over whether to adopt 24 hour system or 12 hour system.
Consecutive No.	Change over whether to print the consecutive numbers or not.
Print number of item sold (item counter)	Change over whether to print the numbers of items sold or not.
Print receipt in double-height characters	Change over whether to print the double-height characters on the receipt or not.
Skip item prints on journal (journal skip)	Change over whether to print items on the journal or skip them.
Journal compressed print (print half height characters)	Change over whether to print the compressed characters (half height of normal characters) on the journal or not.
Paper roll setting (one sheet model only)	Change over whether to issue the receipt or to print on the journal.

3. After setting the above items, click [OK]. Then, the screen returns to the previous one.



[Help]	Opens this Utilization Guide.
[OK]	Finalizes the settings and returns to the previous screen.
[Cancel]	Cancels the settings and returns to the previous screen.

5.7 <X/Z Report>

The <X/Z Report> menu edits the settings for daily X/Z report printing.

5.7.1 X/Z report settings

1. Click <X/Z Report> on the Menu screen.

The X/Z Report screen is displayed.

2. Set the following items for the daily X/Z report.

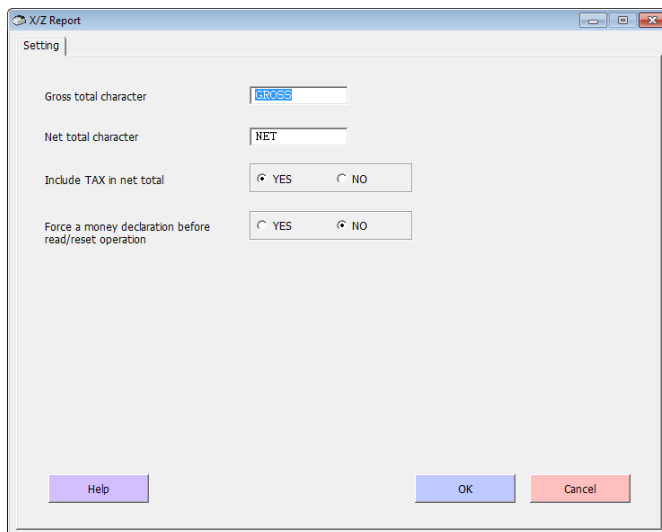
Gross total character Set the characters for “gross sales total” that is printed on the fixed total report. (Within 12 characters)

Net total character Set the characters for “net sales total” that is printed on the fixed total report. (Within 12 characters)

Include TAX in net total Set whether to include TAX in the net total or not.

Force a money declaration before read/reset operation Set whether to force money declaration before read (X) or reset (Z) operation, or not.

3. After setting the above items, click [OK]. Then, the screen returns to the previous one.



The screenshot shows a dialog box titled "X/Z Report" with a "Setting" tab. It contains four settings:

- Gross total character:** A text input field containing "GROSS".
- Net total character:** A text input field containing "NET".
- Include TAX in net total:** Radio buttons for "YES" (selected) and "NO".
- Force a money declaration before read/reset operation:** Radio buttons for "YES" and "NO" (selected).

At the bottom, there are three buttons: "Help" (purple), "OK" (blue), and "Cancel" (red).

[Help] Opens this Utilization Guide.

[OK] Finalizes the settings and returns to the previous screen.

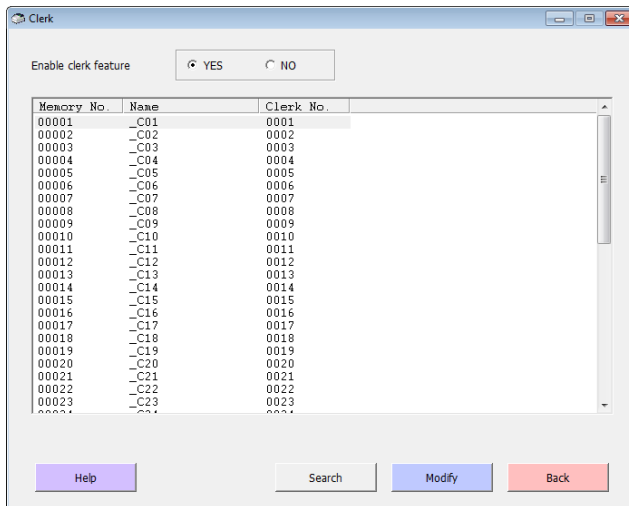
[Cancel] Cancels the settings and returns to the previous screen.

5.8 <Clerk>

The <Clerk> menu edits the settings for clerks.

5.8.1 Clerk list

1. Click <Clerk> on the Menu screen.
The Clerk screen is displayed.
2. Click <YES> in the Enable clerk feature field.
Then the Clerk screen becomes active.
 - * If <NO> is selected, the Clerk screen is inactive. In this case, you cannot use the [Search] / [Modify] buttons and the scroll bar on the right.
 - * The difference in ECR operation between <YES> and <NO>:
When <YES> (enables Clerk function) is selected, on the ECR side, it needs to operate after entering the clerk information. Meanwhile, when <NO> (disables Clerk function) is selected, it is not necessary to enter the clerk information before operation.
3. Select a target clerk and click [Modify], or double-click the target clerk.
The Clerk setting screen for the selected clerk is displayed.



- [Help]** Opens this Utilization Guide.
- [Search]** Opens the search dialog box to search for a target clerk by Memory No. or Name.
- [Modify]** Displays the Clerk setting screen to change the settings for the selected clerk.
- [Back]** Returns to the previous screen.

5.8.2 Clerk settings

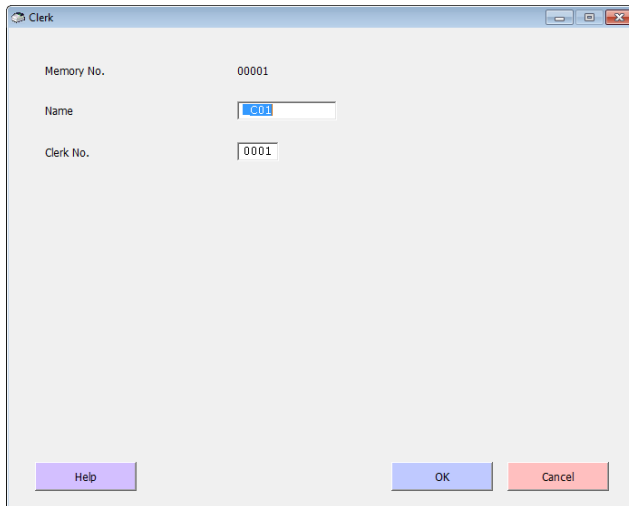
1. In the Clerk setting screen, set the following items for the selected clerk.

Memory No. Selected Memory No. is displayed.

Name Set the name of the clerk. (Within 12 characters)

Clerk No. Assign a 4-digit clerk number for the clerk. (0001 - 9999. Avoid assigning a duplicate number.)

2. After setting the above items, click [OK]. Then, the screen returns to the previous one.



The screenshot shows a dialog box titled "Clerk" with a light gray background. It contains three input fields: "Memory No." with the value "00001", "Name" with the value "001", and "Clerk No." with the value "0001". At the bottom of the dialog, there are three buttons: "Help" (purple), "OK" (blue), and "Cancel" (red).

[Help] Opens this Utilization Guide.

[OK] Finalizes the settings and returns to the previous screen.

[Cancel] Cancels the settings and returns to the previous screen.

5.9 <General Feature>


The <General Feature> menu edits the settings for general features of ECR.

5.9.1 General feature settings

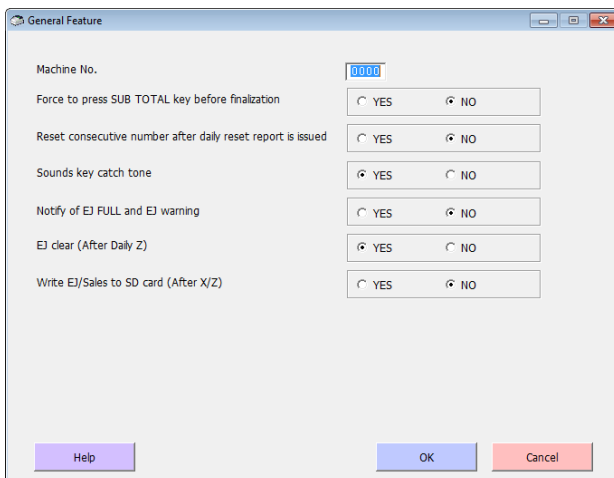
1. Click <General Feature> on the Menu screen.

The General Feature screen is displayed.

2. Set the following items for the general features.

Machine No.	Set the machine number (0001 - 9999) that will be printed on the receipt. (0000: No machine No. is printed.)
Force to press SUB TOTAL key before finalization	When this item is set to <YES>, the finalization operation on ECR is not possible unless  key is pressed.
Reset consecutive number after daily reset report is issued	Set to <YES> to reset the consecutive No. to 000001 after issuing the daily reset report. If it is set to <NO>, consecutive No. will be kept incremented.
Sounds key catch tone	Set whether to sound a key catch tone or not.
Notify of EJ FULL and EJ warning	Set whether to notify of EJ FULL and EJ warning message or not. (EJ: Electronic journal inside ECR.)
EJ clear (After Daily Z)	Set whether to clear EJ after daily Z or not.
Write EJ/Sales to SD card (After X/Z)	Set whether to save EJ data/sales data to the SD/SDHC card after issuing Read report (X) or Reset report (Z), or not.

3. After setting the above items, click [OK]. Then, the screen returns to the previous one.



[Help]	Opens this Utilization Guide.
[OK]	Finalizes the settings and returns to the previous screen.
[Cancel]	Cancels the settings and returns to the previous screen.


5.10 <Tax Table>

The <Tax Table> menu edits the settings for tax tables 1 - 4.

5.10.1 Tax table settings

1. Click <Tax Table> on the Menu screen.
The Tax Table screen is displayed.
2. Set the following items for the tax tables 1 - 4.
The setting items for the tax tables 1 - 4 are identical.

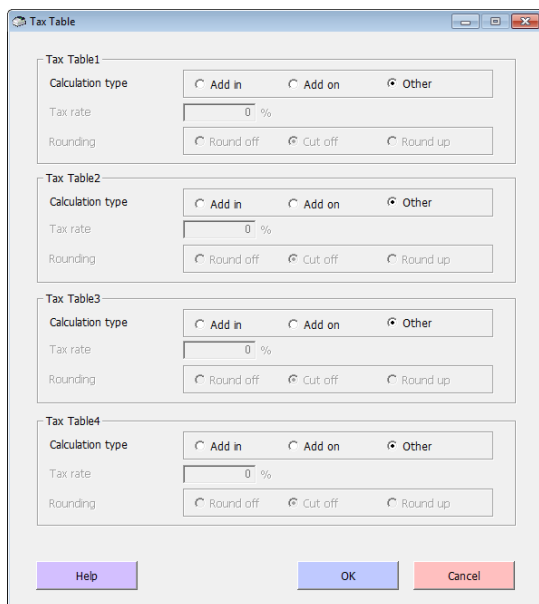
Calculation type Options are <Add in>, <Add on> and <Other>.

 **Notice** Notice when the item is preset to <Other>:
If you change the Calculation type from <Other> to either <Add in> or <Add on>, the settings for <Other> is lost.
For details, refer to “When changing the calculation type from <Other> to <Add in>/<Add on>” on the subsequent page.

Tax rate Set the tax rate. (0% - 9999.9999%)

Rounding Set the rounding of tax amounts. Options are <Round off>, <Cut off> and <Round up>.

3. After setting the above items, click [OK]. Then, the screen returns to the previous one.



[Help] Opens this Utilization Guide.

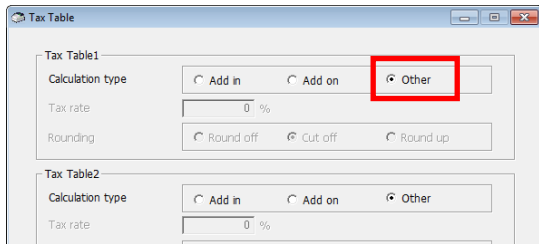
[OK] Finalizes the settings and returns to the previous screen.

[Cancel] Cancels the settings and returns to the previous screen.

When changing the calculation type from <Other> to <Add in>/<Add on>:

The option <Other>, <Add in>, or <Add on> is selectable.

However, depending on the destination of ECR, the tax calculation type may be set to <Other>. In this case, items Tax rate and Rounding of Tax Tables 1 - 4 are inactive and cannot be set.

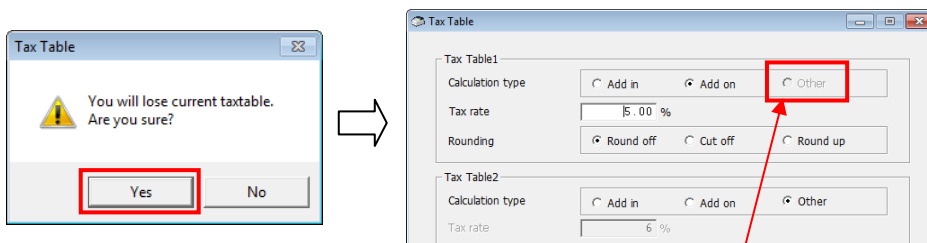


To change the calculation type from <Other> to <Add in> or <Add on>, follow the next steps after carefully reading the “Notice” below.

Notice When <Other> is selected, DO NOT change it to either <Add in> or <Add on> unless you really need it. Once you have changed it so, you cannot return the setting to <Other> once again.

However, since calculation type can be set individually for each tax table, this notice will apply to only the tax table that is set to <Other>.

1. Be sure that <Other> is selected, and then click either <Add in> or <Add on> as required. Then, the following dialog box opens.
2. Click [Yes].
The items Tax rate and Rounding become active.
* Click [NO] to cancel the setting and return to the previous screen.



You cannot select <Other> any more.

6. Appendix

6.1 Error message list

When an error message is displayed, solve the problem following the table below.

Error message	Remedy
Can not find the program file.	ECR Setting Tool could not find the setting file. Check if the setting file exists in the SD/SDHC card and the selected drive letter is corrected. Also be sure that the SD/SDHC card or the file is not broken. If the setting file does not exist in the SD/SDHC card, export it referring to “2.4.2(1) ECR’s setting file → Exporting to a SD/SDHC card (Operation on ECR side)”.
Failed to read the program file.	When the setting file is read, an abnormality occurred. Check if the selected drive letter is corrected. Also be sure that the SD/SDHC card or the file is not broken.
Failed to save the program file.	When the setting file is saved, an abnormality occurred. Check if the SD/SDHC card exists, its lock switch is set to ON, and the selected drive letter is corrected. Also be sure that the SD/SDHC card or the file is not broken.
The program file is read only.	The setting file to be written is a read only file. Check its property.
Failed to convert the program file.	The setting data is abnormal. Be sure that the SD/SDHC card or the file is not broken.
Failed to read setting data.	Failed to read the internal setting data. Be sure that the SD/SDHC card or the file is not broken.
Failed to write setting data.	Failed to write the internal setting data. Be sure that the SD/SDHC card or the file is not broken.
The path of program file is directory.	The path of the setting file is directory. Check the directory and the setting file.
An unexpected error has occurred.	The setting file or operating environment is abnormal. Be sure that the SD/SDHC card or the file is not broken. Also, check if the operating environment of PC is normal. Reinstall the ECR Setting Tool and try again.
Failed to create control.	The operating environment is abnormal. Check if the operating environment of PC is normal. Reinstall the ECR Setting Tool and try again.
Failed to load C_COMW.dll.	The operating environment is abnormal. Check if the operating environment of PC is normal. Reinstall the ECR Setting Tool and try again.
Failed to load CvLogoConv.dll.	The operating environment is abnormal. Check if the operating environment of PC is normal. Reinstall the ECR Setting Tool and try again.
Failed to read the bitmap file.	The read bitmap file is abnormal. Check the file for abnormality. Use another bitmap file and try again.
Failed to convert Graphic logo.	The setting file or operating environment is abnormal. Be sure that the SD/SDHC card or the file is not broken. Also, check if the operating environment of PC is normal. Reinstall the ECR Setting Tool and try again.

Error message	Remedy
An image source file is not found.	The setting file or operating environment is abnormal. Be sure that the SD/SDHC card or the file is not broken. Also, check if the operating environment of PC is normal. Reinstall the ECR Setting Tool and try again.
Cannot show help.	Check if Adobe Acrobat or Adobe Reader is installed in your PC.
Failed to execute (XXXXX).exe.	The operating environment is abnormal. Check if the operating environment of PC is normal. Reinstall the ECR Setting Tool and try again.

CASIO.