



**Hi-Tech Sweet Water Technologies Pvt. Ltd.**

Mkt. Off.: SURAT: Tel.: +91-261-3056779/3053079 • Fax: +91-261-2234907

HO Off.: BARDOLI: Tel.: +91-2622-222755/224726 • Fax: +91-2622-227315

**Branches**

AHMEDABAD: +91 99740 15848 • ANAND: +91 99740 15850 • BARODA: +91 99740 15851 • BHARUCH: +91 99740 15852  
• DHULE: +91-2562-272544 • KAMREJ: +91 99740 15846 • MUMBAI: +91-22-28756109  
• NADIAD: +91 99740 15854 • NANDURBAR: +91-2564-229087 • NASHIK: +91-253-2597249 • NAVSARI: +91 99740 15853  
• PETLAD: +91 99740 15855 • UMRETH: +91 99740 15856 • VALSAD: +91 98980 47609 • VAPI: +91 99740 15857

**CONTACT:**

Gujarat - +91 98980 47820, +91 98980 22557 • Rajasthan - +91 98290 45702

Maharashtra - +91 94227 87933 • Delhi - +91 98732 84950, +91 93502 79005

M.P. - +91 98933 19311 • Chennai - +91 94437 48700, +91-44-30958788 • Andhra - +91 93464 99778

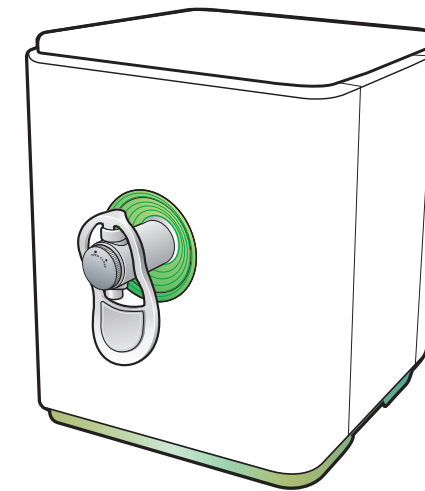
email: [info@hitechro.net](mailto:info@hitechro.net) • Visit us at [www.hitechro.net](http://www.hitechro.net)

[www.hitechro.net](http://www.hitechro.net)

## Water Filtration System

### Water Ex (HTW-03-B-C) / User's Manual

Do not fail to read this user's manual before you use this water filtration system and keep it within ready reach.



■ This product can not be used if the voltage is different from that mentioned in the rating plate.

## DEAR OUR CUSTOMERS

First of all, we would like to thank you very much for purchasing our water filtration system. This product is superior to the ones in function in the past, and we believe that it will provide you with clean and healthy water. We would like to recommend you to read carefully this user's manual for proper operation and maintenance and keep it well together with the warranty. This user's manual could solve your problem resulted from that you can easily fix by yourself in just a few minutes.



### Read this Manual

Inside this manual you will find many helpful hints on maintaining your filtration system properly. Just a little preventive care on your part can save you a great deal of time and money over the life of your system.



### Review the Section on Troubleshooting Tips

You'll find many answers to common problems here. If you review this chart of Troubleshooting Tips first, you may not need to call for service at all.



### If You Need Service

If you do need service, make a phone call to customer center.

### Safety Information

Electricity Safety-----	02
Installation & Use Safety-----	04

### Operating Instructions

Features-----	07
Names of Each Part-----	09
Operation Method-----	10
Cleaning Method-----	11
Filter Replacement-----	13
Water Filtration System-----	15
Water Flow Diagram-----	16

### Troubleshooting Tips

Before Asking A/S-----	17
------------------------	----

### Customer Service

Our Network Area-----	18
-----------------------	----

## IMPORTANT SAFETY INFORMATION

Read all the installation precautions and instructions carefully and completely prior to beginning use. Periodic maintenance is required in order for this product to perform as advertised. Read and save these instructions before using.

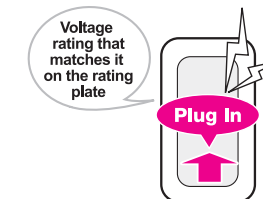
### ▲ WARNING

**For your safety, the information in this manual must be followed to minimize the risk of property damage or personal injury.**



### Electricity Safety

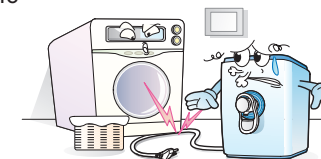
Only connect the power cord to the voltage rating that matches it on the rating plate to avoid danger such as electric shock or fire. And be sure the electric outlet is in an inside location to protect from moisture.



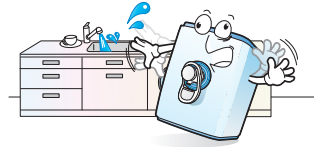
Do not pull the power cord from the outlet with a wet hand or get the plug wet to avoid electric shock.



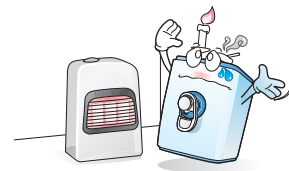
Be sure the power cord not to be bend by force and do not put a heavy object on it to avoid any electric leakage or damage.



Never splash the water filtration system with water to avoid the risk of electric shock.



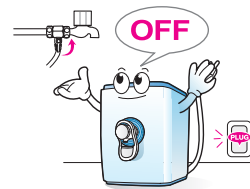
Keep the cord out of heavy traffic areas. To avoid fire hazard NEVER put the cord under rugs, near heat resistors, radiators, stoves, or heaters.



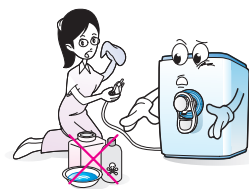
Do not use a damaged power cord or plug, and loose consent where the plug cannot be inserted securely to avoid fire or shock hazard. If the power cord is damaged, it must be replaced by the manufacturer or its service agent or a similarly qualified person in order to avoid a hazard.



Unplug the power cord when not using for an extended period of time. Insulation may deteriorate, causing short circuit, fire and/or electrical shock as a result.



Periodically remove dust from the power plug with a dry cloth. Dust built-up can cause bad insulation and a fire may occur as a result.



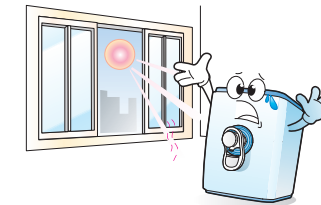
## ▲ WARNING

Do not use with water that is microbiologically unsafe or unknown quality without adequate disinfection before or after the system.

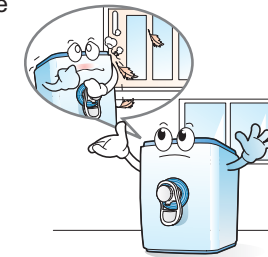


## Installation & Use Safety

Keep the water filtration system out of direct sunlight. The sun's heat may distort non-metallic parts and may damage the electronics.



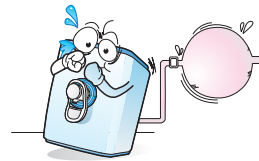
Do not install the water filtration system where it could freeze. Freezing damage is not covered by the warranty.



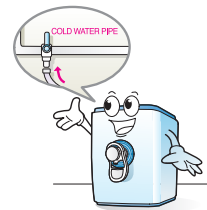
Keep the water filtration system away from place being humid and dust rising place to avoid electric shock and fire.



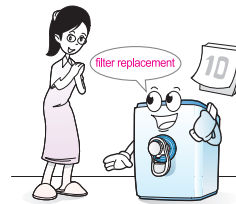
If the water pressure at house is over the maximum working pressure of the water filtration system (referring to the rating plate), install a pressure reducing valve in the water supply line.



Only connect the water filtration system to cold water pipe. Do not run hot water over 40°C through it. It will defect the filters of the water filtration system.



Periodical filter replacement is prerequisite for getting clean water. In case filters are overused, the performance of filters is deteriorated. Therefore, do not miss the time of filter replacement.



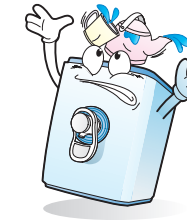
When water is stored or the product is not in use for a long time, drain all the water in the storage tank before use.



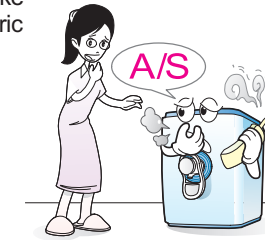
Do not repair, disassemble, or modify. Fire and/or electrical shock may occur as a result. For repair, contact your dealer of purchase or A/S center.



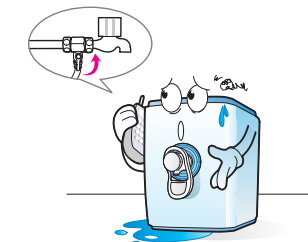
Do not allow the foreign or unexpected material into the storage tank. The filtered water in the storage tank may be deteriorate as a result.



Immediately plug out in the case of a smoke or smell of fire to call to A/S center. Electric shock or fire may occur as a result.



Lock feed water valve and plug out in the case of any water leakage from the product.



The appliance is not intended for use by young children or infirm persons without supervision; Young children should be supervised to ensure that they do not play with the appliance.



## FEATURES

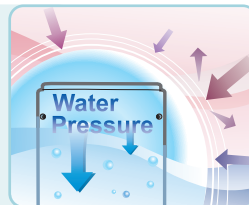
### Child Lock Cock

The "Child Lock Cock" prevents water extraction by children's mischief and it adds convenience by opening or closing water cock only on the front operation part without separate device.



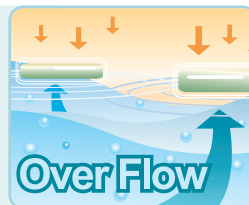
### Constant Water Pressure

It supports constant water pressure regardless of fluctuating water pressure to protect inside of product.



### Double Safety Water Level Controller

It prevents overflow by double-controlling water level of the storage tank.



### Airtight Tank

By applying separate airtight cap, it prevents the secondary contamination to be caused by foreign materials such as dust, bug, and so on in the storage tank.



### Boost Pump Pressurizing Feed Water

Superior water quality is guaranteed even in the area with low water pressure by pressurizing the feed water. The pump is recommended for the areas of low water pressure (under 15psi).



### Anti-bacteria System

By using the silver-added activated carbon filter and ceramic filter, it restrains propagation of the microorganism inside water tank and enhances sanitation.



### Intensified Water Filtration

By adding fine filter, it minimizes fine dust flowed into storage tank passing through post-carbon filter.



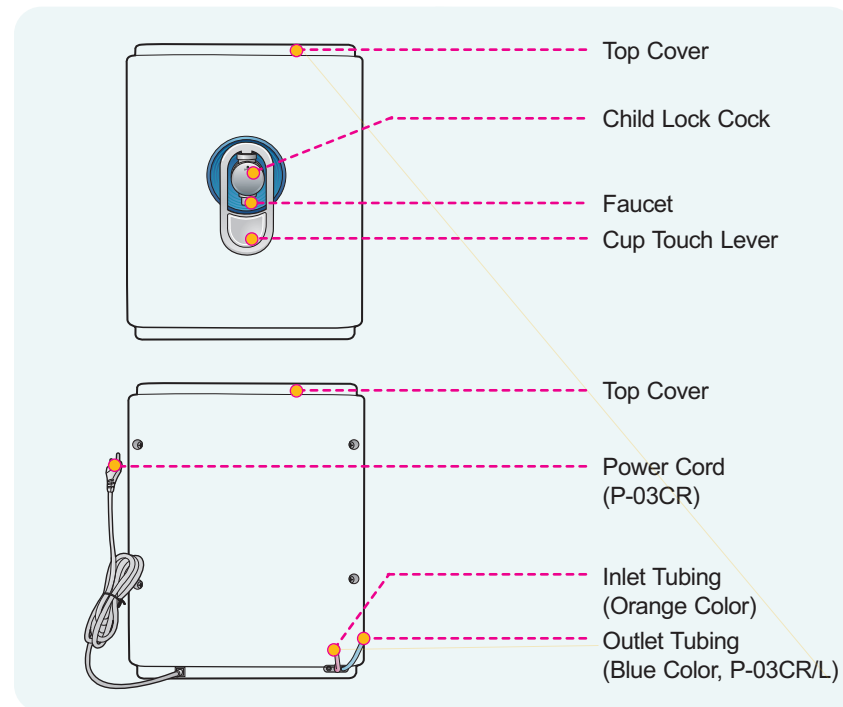
### Spare Water Bucket

Handy spare water bucket for diverse uses adds your convenience.

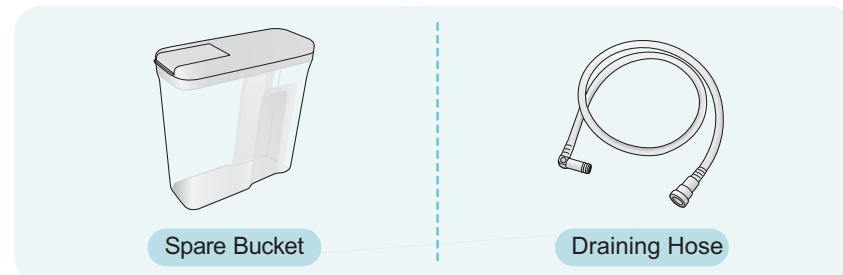


## NAMES OF EACH PART

### Front / Rear



### Accessories



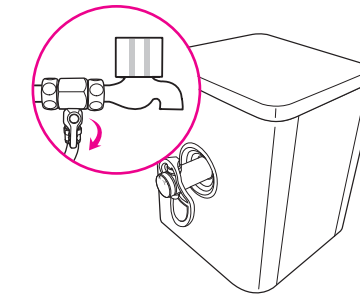
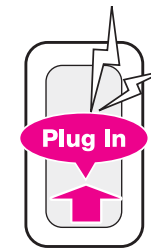
## OPERATION METHOD

**▲ WARNING**  
Do not use with water that is microbiologically unsafe or unknown quality without adequate disinfection before or after the system.

### How to Operate

**Step1** Connect the power cord to the voltage rating that matches it on the rating plate only. (P-03CR)

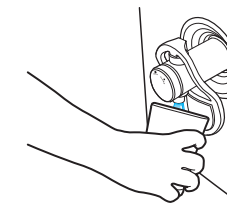
**Step2** Open the valve to supply water to the product.



### How to Drink Water

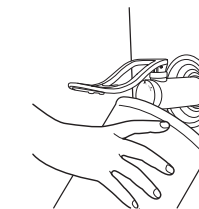
#### Usual Extraction

Lightly push the cup-touch lever to drink water.



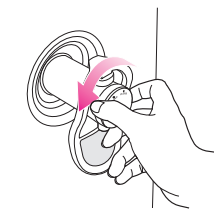
#### Continuous Extraction

Pull forward the cup-touch lever to extract filtered water continuously.



#### Child Lock Cock

Turn the cock to c.c.w to prevent water extraction by children's mischief.



**▲ WARNING**  
Do not pull out severely the cup-touch lever to avoid damage or breakage.

## CLEANING METHOD

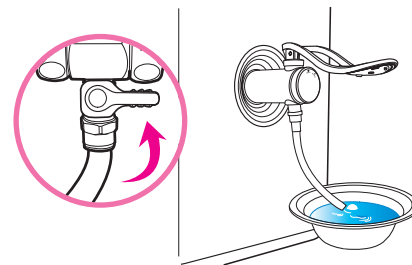


### CAUTION !!

Keep the surrounding environment clean all the time and clean the inside of the tank once a month to get clean water.

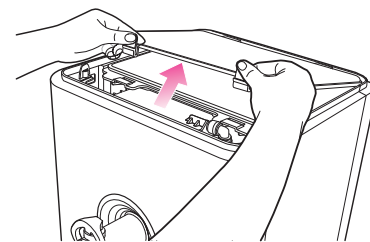
#### Step1

Close the main water feed valve. And unplug the power cord from the wall outlet. (P-03CR)  
Then, drain all the water in the storage tank and keep it on a water reservoir.



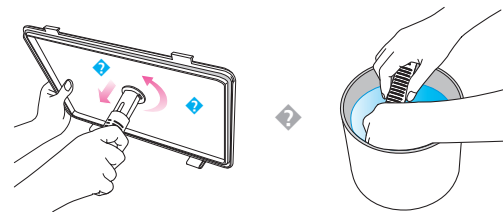
#### Step2

Separate the top cover of the product and open the water tank cap.



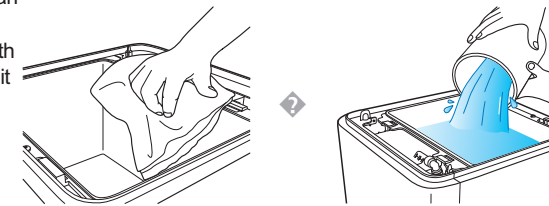
#### Step3

Separate the ceramic filter from the storage tank and wash the filter with filtered water like picture.



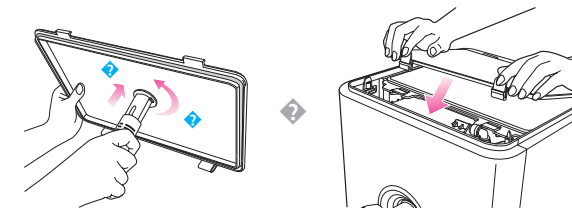
#### Step4

Wipe the inside of the storage tank with a soft cloth soaked with an edible detergent.  
Wash out the storage tank with the reserved water and drain it through the drain hose.



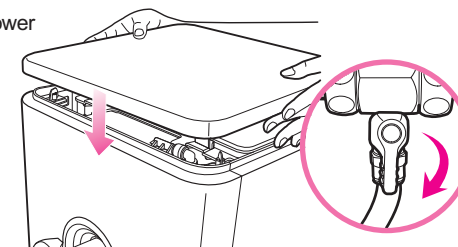
#### Step5

Insert the ceramic filter like picture and close the water tank cap.



#### Step6

Close the top cover. And plug the power cord. (P-03CR)  
Then, open the main feed valve.





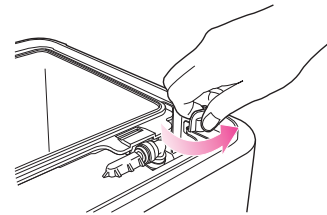
## FILTER REPLACEMENT

### ▲ WARNING

Installation of the filters must comply with existing state or local plumbing codes.

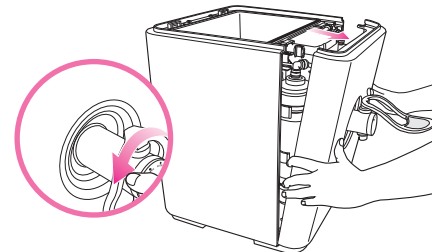
#### Step1

After the following 1st step of "CLEANING METHOD", unscrew 2 bolts to separate the front cover.



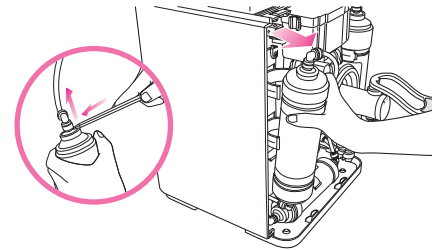
#### Step2

Cover the extracting hole on the faucet with the faucet cap. After pulling up the cup-touch lever and pull the front cover out to separate it.



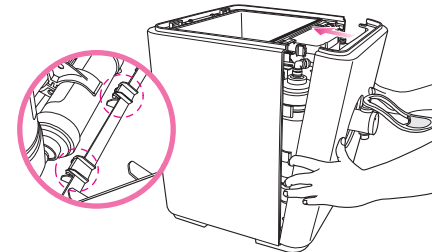
#### Step3

Separate the assembled fitting from the filter. After replacing the filter, neatly connect the fitting and the tubing against any water leaks. Discard the first filtered water before drinking water.



#### Step4

Assemble them by counter order.



## Estimated Time of Filter Replacement

The estimated replacement time of filter which is a consumable part is not an indication of quality guarantee period, but it means the ideal time of filter replacement. Accordingly, the estimated time of filter replacement may be shortened in case it is used in the area of poor water quality or a lot.

#### HTW-03-B-C

Names of Filter	Usable Period
Plus-Sediment Filter	6
Pre-Carbon Filter	12
Membrane Filter	24
Post-Carbon Filter	18
Fine Filter	24
Ceramic Filter	12

\*Replacement period of the filter above is based on the use of 10 per day.

#### Note

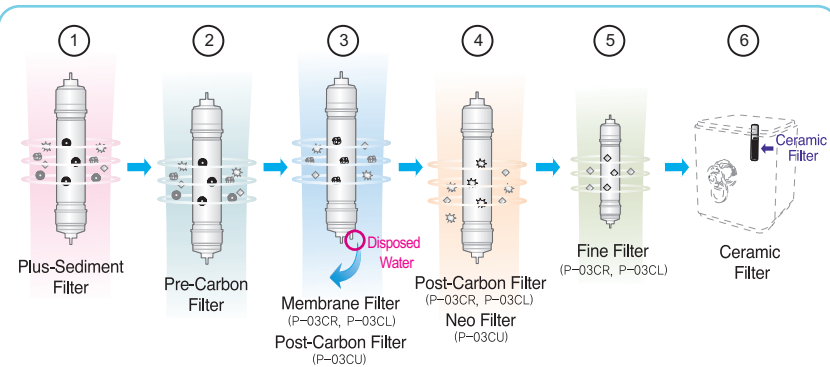
This reverse osmosis system contains a replaceable treatment component, critical for the effective reduction of total dissolved solids and that product water shall be tested periodically to verify that the system is performing properly. Replacement of the reverse osmosis component should be with one of identical specifications, as defined by the manufacturer, to assure the same efficiency and contaminant reduction performance.



## WATER FILTRATION SYSTEM

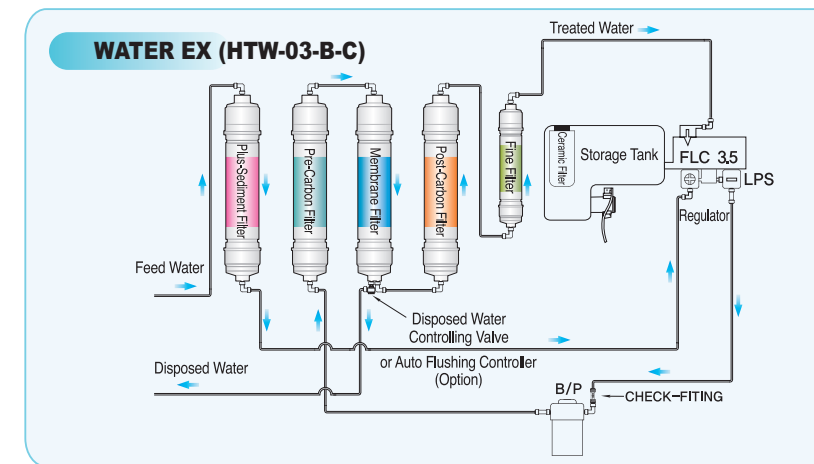
### Water Filtration Process

- Step1** Reduces undissolved particles such as large dust and rust from feed water and protects membrane and pre-carbon filter from being clogged.
- Step2** Reduces chlorine to prevent hydrolysis of TFC membrane and adsorbs Volatile Organic Compounds from feed water.
- Step3** TFC membrane with pores of 0.01(1/1,000,000 of hair) reduces water contaminants such as heavy metals and waterborne microorganisms such as viruses, bacteria, etc. (P-03CR, P-03CL)  
Reduces the bad taste and odor, improves water taste and enhances anti-bacteria function by silver granular activated carbon(P-03CU)
- Step4** Reduces the bad taste and odor, improves water taste and enhances anti-bacteria function by silver granular activated carbon(P-03CR, P-03CL)  
Reduces the foreign materials and waterborne microorganisms(P-03CU)
- Step5** Minimizes contaminant inside the tank by reducing fine dust flowed into storage tank passing through post-carbon filter.
- Step6** Restraints propagation of the microorganism inside water tank and enhances sanitation.



**WARNING**  
The disposed water shall be used for cleaning a toilet, a house, dishes, and as water for sundry uses. However, please do not use it for potable water or cooking water.

## WATER FLOW DIAGRAM



### Specifications

MODEL	P-03CR
Power Supply	Voltage rating that matches it on the rating plate
Filtration Method	R/O
Tank Capacity	Reservoir tank 6.5ℓ Spare bucket 1.5ℓ
Filtration Capacity	190ℓ/day (25℃, 60psi)
Dimension	325(W) X 400(D) X 415(H)mm <128(W) X 157(D) X 163(H)inch>
Net Weight	10Kg(22lb)

- Without any prior notice, all or parts of the product are subject to change for the purpose of improving the performance of the product.

## BEFORE ASKING A/S

Please checkup the following points before asking for A/S service.

Trouble	Check-up	Troubleshooting
Unusual taste of water	Have you cleaned the storage tank?	Clean the storage tank.
	Have you stored the water too long?	Drain the stored water and clean the storage tank.
	Is it the time to replace the filter?	Replace the filter.
The amount of filtered water has suddenly increased or decreased	Do you close the feed water valve?	Check the feed water valve.
	Does the temperature of the feed water drop dramatically?	If the water temperature lowers, the amount of filtered water reduces.
	It looks that the filter is blocked or damaged.	Replace the filter.
No water comes out	Is there the suspension of water supply or the feed water valve closed?	Open the feed water valve.
	It looks that the faucet is out of order.	Ask for A/S service.
	Have you missed the time of filter replacement?	Replace the filter.
During operation, all functions stop suddenly	Is the feed water supplied smoothly?	Check the feed water valve.
	Is the filtered water overflowed or leaking?	Ask for A/S service.

## OUR NETWORK AREA

