

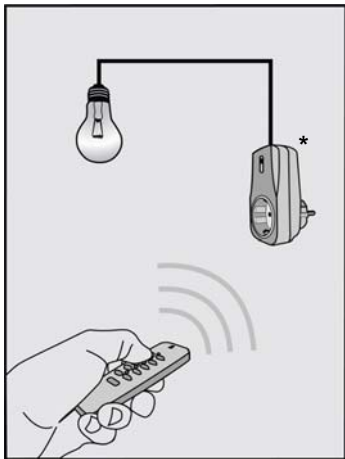


USER'S MANUAL
version 1.1

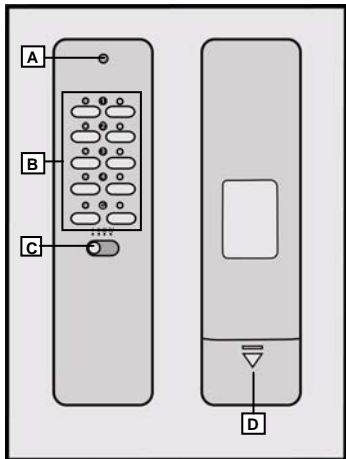
English



AYCT-102 REMOTE CONTROL

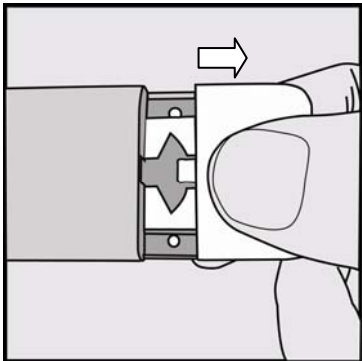


* Picture of an arbitrary COCO receiver
(not always included; check the specifications on the
packaging)

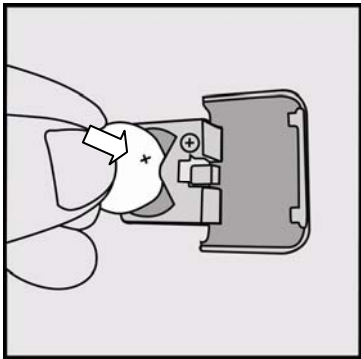


A: Transmit indicator
B: On/off buttons

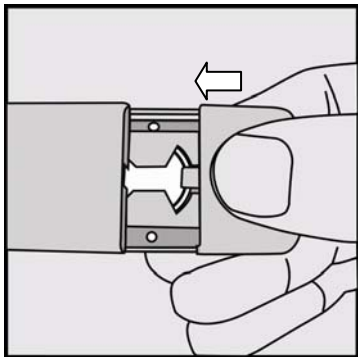
C: Channel switch
D: Battery compartment



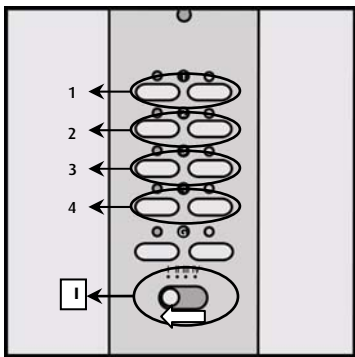
[1] Slide open the battery compartment.




[2] Place a battery in the recess of the battery holder. The + and - poles of the battery must match the + and - symbols on the holder.

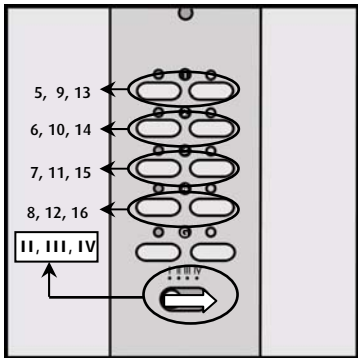


[3] Slide the battery holder with battery in the remote control.

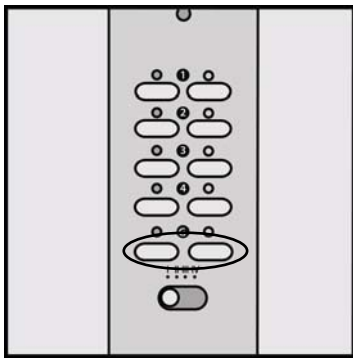


[4] Slide the channel switch to **I**. Press the on/off buttons under **1** to operate all the receivers with numeric code 1. Press the on/off buttons under **2** to operate all the receivers with numeric code 2, etc.

 *The indicator lights up when a button is pressed!*



[5] Slide the channel switch to **II**. The buttons under **1 2 3 4** now match the numeric codes 5, 6, 7 and 8 of your receivers respectively. Set the slider to **III** or **IV** to operate the receivers with numeric codes 9, 10, 11, 12 or 13, 14, 15, 16 respectively.




[6] The “group” on/off buttons (under **G**), have been added and are intended to operate multiple receivers at the same time with the press of a single button.

⚠ *The group buttons operate **independently** of the position of the channel switch (**I, II, III** or **IV**)!*

Remarks **Reminders**

- This product must be used in combination with at least one COCO receiver. The receivers that are used must automatically program themselves with the transmitted code (see manual of the concerned receiver). Receivers on which the letter code ("house code") must be programmed manually are not suitable for use with this product.
- With this remote control, multiple receivers can be operated both simultaneously and independently.
- If the product does not work or does not work properly:
 - Check the correct placement and/or function of the battery (replace if necessary).
 - Check step for step whether the concerned receiver is programmed properly (see the manual for the receiver in combination with steps **[4 – 6]** of this manual).

 **Dimming function**

- The dimming function only works if the concerned receiver is suitable for this function. For more details concerning the dimming function, see the manual for the dimmer receiver.
- Do not program dimmer receivers and on/off receivers for operation with the same button on the remote control.
- Do not program multiple dimmer receivers for operation with the same button on the remote control; use separate buttons.

 **The group buttons**

- The special group buttons are used to switch on/off multiple receivers simultaneously.
- Dimmer receivers do not operate as dimmers when they are programmed for use with the group button.
- A receiver can be programmed to respond to multiple buttons on the remote control. See the following **example with 3 receivers** that automatically program themselves with the codes:
 - Receiver 1: Table lamp
 - Receiver 2: Night lamp
 - Receiver 3: Ceiling lamp

Step 1: Program receivers 1, 2 and 3 each independently under buttons 1, 2 and 3 of the remote control respectively: Every lamp can now be operated independently with its own button.

Step 2: Now also program receivers 1 and 3 together under button 4 of the remote control. Button 4 now operates the table lamp and ceiling lamp at the same time.

Step 3: Finally, program receivers 1, 2 and 3 again under the green button so all three lamps can be switched on/off together.

In the example above, "receiver 1" and "receiver 3" are programmed with 3 codes each and "receiver 2" is programmed with just 2 codes. A receiver that automatically programs itself with codes can remember a maximum of 6 codes.

Safety instructions

- Do not expose this product to excessive heat, direct sunlight or moisture.
- Remove the battery from this product if it will not be used for an extended period.
- Do not attempt to repair this product. If the product is damaged or if you are in doubt about the proper operation, take the product back to the place of purchase.
- Never use COCO products for life support systems or other applications in which equipment malfunctions can have life-threatening consequences.
- Do not use the product in damp areas. Clean the device with a clean cloth.

Power

- Replace the battery if the transmit indicator no longer lights when the on/off button is pressed.
- Only use a 3 Volt CR2032 lithium battery.
- Do not throw the battery into an open fire.
- Respect the local regulations when disposing of batteries.

 **Wireless**

- This product works using a radio signal that passes through walls, windows and doors. The range is maximum 75 metres in the open air. The range indoors is strongly influenced by local conditions such as concrete, glass and metals. On average, the indoor range is approximately 30 metres.
- New double glass often includes a thin metallic layer. This type of glazing (“**HR glass**”) allows most visible light to pass through but has a negative impact on radio signals. If there is HR glass between the transmitter and receiver, you should expect a significant reduction of the range of the wireless signal.
- This product operates at a frequency of 433.92 MHz. It complies with the essential requirements and other conditions of R&TTE Directive 1999/5/EC and can be used in all EU countries.
- There may be restrictions on the use of this device outside the EU. If this device is used outside the EU, check whether the device complies with the local directives.



This product complies with the essential requirements and other relevant provisions of the applicable European directives. The Declaration of Conformity (DoC) is available at www.coco-technology.com.



If possible, submit this product for recycling after use. Do not dispose of the product with household trash.

Warranty and copyright

This device is covered by a 2-year warranty that begins on the day of purchase. Visit www.coco-technology.com/warranty for additional information. Reprinting of (portions of) this manual without permission from Pan-Trade International B.V. is expressly prohibited.



PAN-TRADE INTERNATIONAL B.V.

P.O. BOX 126
4760 AC ZEVENBERGEN
THE NETHERLANDS
www.coco-technology.com



Declaration of Conformity

Pan-Trade International BV declares that the COCO product, model:

type designation	AYCT-102 REMOTE CONTROL
item number	74001

is in compliance with the essential requirements and other relevant provisions of directives R&TTE 1999/5/EC, EMC 2004/108/EC and LVD 2006/95/EC and is compatible with the standards EN 300 220-1/3, EN 55015 and EN 301 489-1/3.

Manufacturer / Authorised representative,



M.A. Hoekstra, managing director
Zevenbergen, 2008-01-30