

Epson Stylus Pro 7700
PowerDriver-E

USER'S MANUAL

For the absolute latest information and updates on all products, materials, processes and/or procedures relative to all offerings by or through Sawgrass Technologies, Inc., please refer to our website:

www.sawgrassink.com

Epson Stylus Pro 7700 PowerDriver-E User's Manual

PowerDriver-E is equipped with a user-friendly software interface that allows individuals to access and customize driver configuration settings for optimal printing performance. As an added bonus, PowerDriver-E is also outfitted with several resource and utility features to bring additional help and support for customers looking to bolster their printing experience. Through these powerful features, users are able to gain complete control over their image quality, color output and print options.

1. To view the PowerDriver-E configuration settings, click your start icon and select Devices and Printers (see FIGURE 1). If you are using an older version of Windows OS, you will instead select Printers and Faxes.

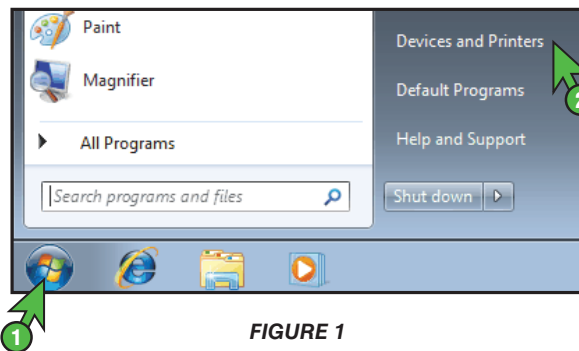


FIGURE 1

- 2.) In the Devices and Printers folder, right-click on the PowerDriver E 7700 icon and select Printing Preferences (see FIGURE 2). This will open the PowerDriver-E Printing Preferences window (see FIGURE 3).

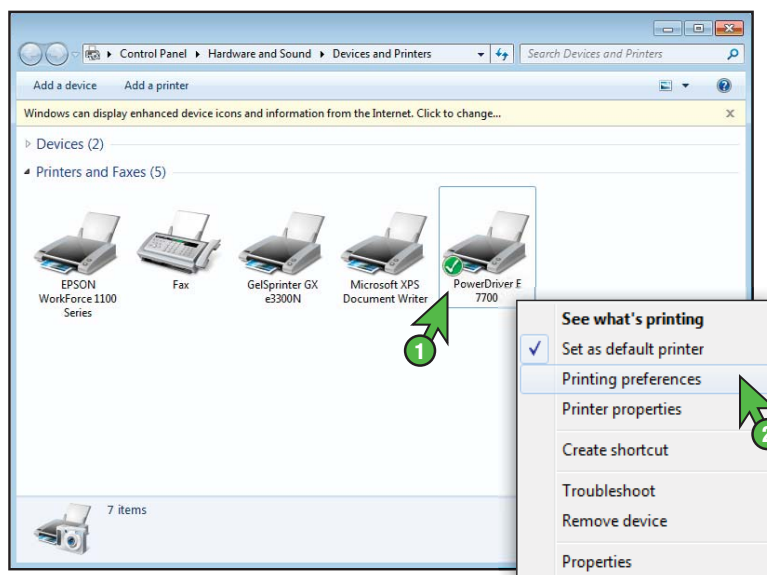


FIGURE 2

SubliJet-E Professional: Epson Stylus Pro 7700 PowerDriver-E User's Manual

3. With the PowerDriver E 7700 Printing Preference window open, click the **Virtual Printer Driver** tab. Here you will find five different **SECTIONS** to utilize: (see FIGURE 3)

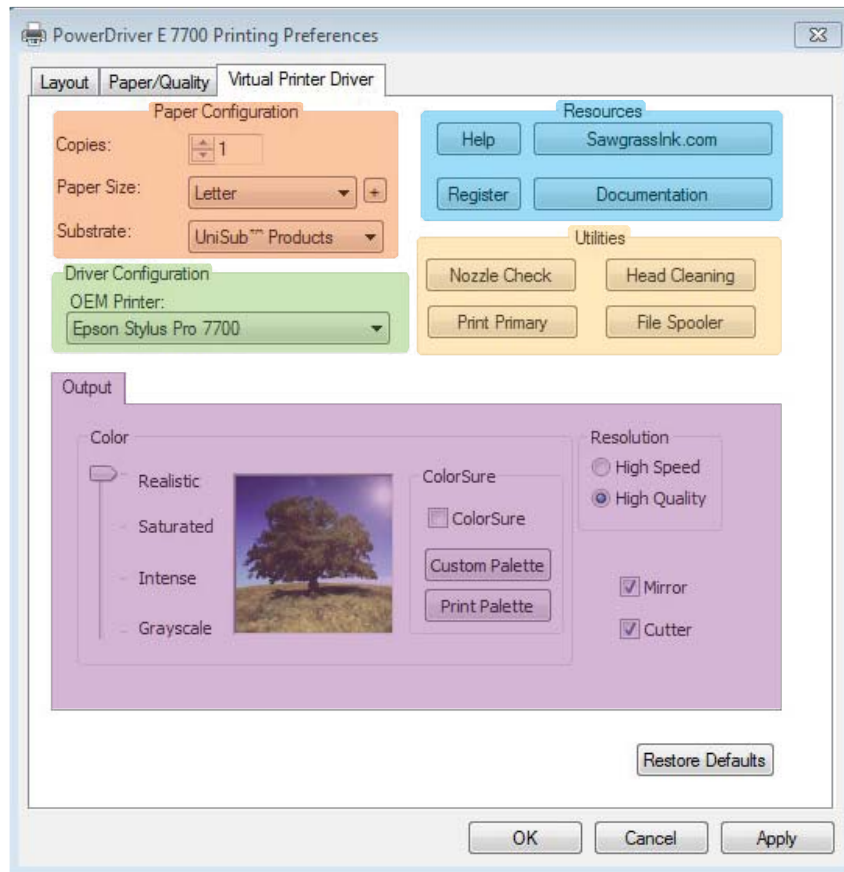
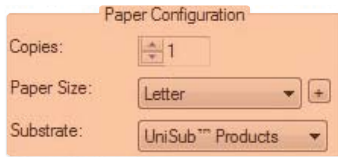


FIGURE 3

- SECTION 1** Paper Configuration Choose Paper Size and Type, Copies and Substrate
- SECTION 2** Driver Configuration Select OEM printer intended for use
- SECTION 3** Output Adjust Color, Create Palette, Mirror Image and Control Cutter
- SECTION 4** Resources Access Documentation, Help and Online Support
- SECTION 5** Utilities Access Resources intended for Printer Maintenance

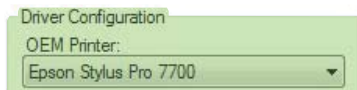
SubliJet-E Professional: Epson Stylus Pro 7700 PowerDriver-E User's Manual

SECTION 1



- Copies** Sets the number of prints needed per image. Use this feature when multiple prints of the same image are needed.
- Paper Size** Sets the desired output paper size used when printing. Adjust this to match the size of the document you are printing up to 24" in width.
- Substrate** Sets the desired substrate being used. Match this to the type of material on to which you will be transferring your printed image. Because PowerDriver's color management is optimized for each substrate listed, it is important to choose the substrate that most closely matches the substrate being used.

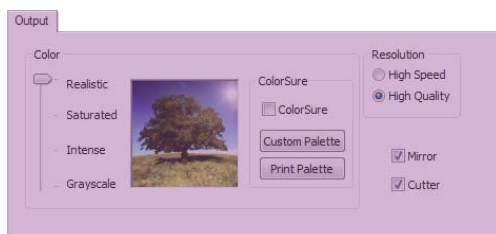
SECTION 2



- OEM** Sets the OEM printer intended for use with PowerDriver-E. This feature is particularly useful when printing to multiple printers with the same ink set. For instance, if you have two Epson Stylus Pro 7700's and both are for printing with SubliJet E Professional, you can choose between each printer per print job.

SubliJet-E Professional: Epson Stylus Pro 7700 PowerDriver-E User's Manual

SECTION 3



- Realistic** This setting is intended as a photographic color management solution. It is most suitable for photographic images containing landscapes or portraits.
- Saturated** This setting is intended as a business graphics color management solution. It is most suitable for business logos and designs that require a more vivid color output.
- Intense** This setting is similar to “Saturated”, but has a deeper/more vivid output. It is most suitable when the “Saturated” setting does not output the desired amount of “pop” or color needed.
- Grayscale** This setting is intended for printing monochromatic or black and white images. It allows you to print images using varying shades of gray only.
- ColorSure** Check this box if you want to use the ColorSure color palette. ColorSure is a method for reproducing exact spot colors. By picking colors from the ColorSure Palette, you will be able to consistently reproduce colors in a reliable manner.
- Custom Palette** Here you can add your own unique colors to the ColorSure palette. ColorSure must be checked in Color Options in order to use this feature.
- Print Palette** Click here to print the default ColorSure Palette. This feature allows you to see how colors will look once transferred to your desired substrate. Before you print the ColorSure Palette, be sure to choose the paper size, paper type and substrate that most closely resemble those which you are using. The default ColorSure Palette will also contain custom colors once you have added and saved them using the Custom Palette utility.
- High Speed** When this setting is selected, print parameters are optimized for faster print times. High Speed is more suitable for soft substrates.
- High Quality** High Quality provides higher resolution, smoother gradients and more vivid color for sublimation images. High Quality is more suitable for hard substrates.
- Mirror** Check this box to “flip” or reverse your image. The image becomes reversed when transferring from paper to substrate. Therefore, you will need to “flip” or reverse the image before printing to paper.
- Cutter** Check this box if you would like the Epson to automatically cut after each print.

SubliJet-E Professional: Epson Stylus Pro 7700 PowerDriver-E User's Manual

SECTION 4



- Help** Click here to access general information about PowerDriver-E. The help dialog menu also contains a direct links to our website, where you can find the latest driver updates, literature and educational resources offered by Sawgrass Technologies, Inc.
- Documentation** Click here to view and/or download the latest documentation which will guide you through the installation, registration and setup of your printer, driver and software.
- Register** Click here to register your product. Registration is required to unlock all product features and functions that PowerDriver-E has to offer. You must register PowerDriver-E for every PC on which it is installed.
- Sawgrassink.com** Click here to access the Sawgrass Technologies, Inc. website. You will find the absolute latest information and updates on all products, materials, processes, and/or procedures relative to all offerings by or through Sawgrass Technologies, Inc.

SECTION 5



- Nozzle check** Click here to print a test pattern to check nozzle condition. If any of the nozzle patterns are missing or incomplete, then a head cleaning is required.
- Head Cleaning** Click here to initiate the head cleaning process. This feature is necessary when nozzles are missing thus causing color shift or "banding" in your printed images. You should print a nozzle check to confirm missing nozzles before performing a head cleaning. Repeat the Head Cleaning until a complete nozzle check has been achieved. Contact technical support if you fail to achieve a good / complete nozzle check after performing 2 head cleanings.
- Print Primary** Click here to print a primary ink chart. This chart contains a series of blocks which represent each ink channel on the print head. It can be useful when attempting to troubleshoot or trying to clear clogged nozzles.
- File Spooler** Click here to launch the File Spooler Utility. This feature is solely intended for advanced users and technical support for troubleshooting. It allows you to print jobs that were previously processed and saved to disk as text files or print ready files, also known as PRN files.

SubliJet-E Professional: Epson Stylus Pro 7700 PowerDriver-E User's Manual

4. At the top of the PowerDriver E 7700 Printing Preference window, click the **Layout** tab. Here you will find four different **SECTIONS** to utilize: (see *FIGURE 4*).

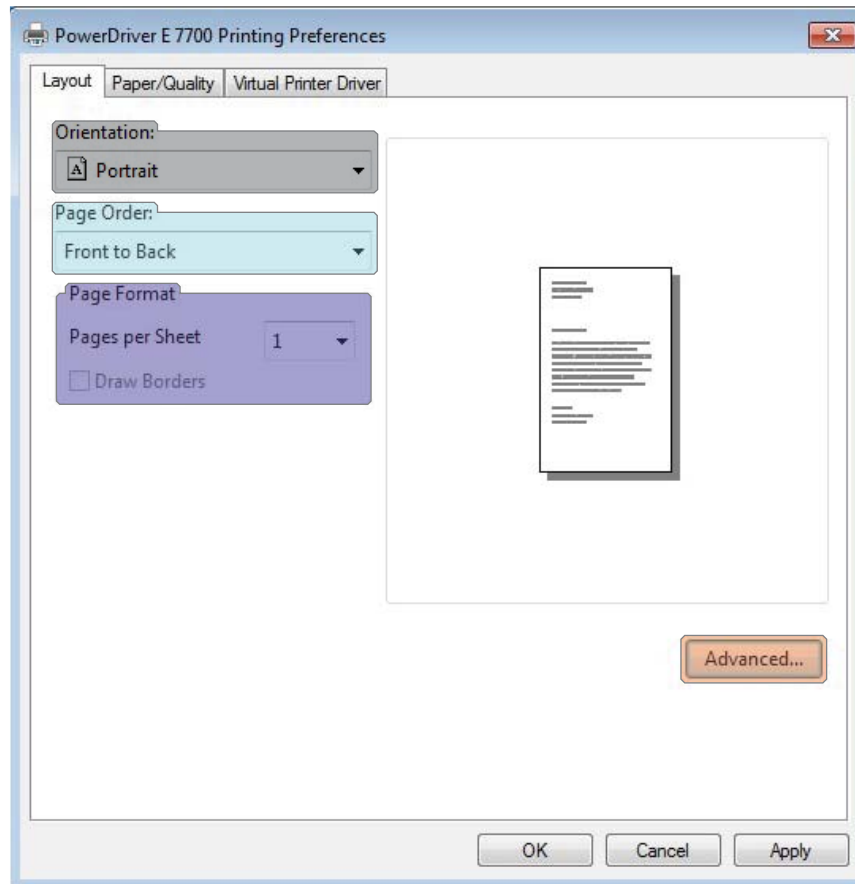


FIGURE 4

- SECTION 6** **Orientation** Choose the direction in which an image is printed
- SECTION 7** **Page Order** Sets the chronological order when printing images
- SECTION 8** **Page Format** Adjust the number of pages per sheet
- SECTION 9** **Advanced...** Access the current Document Settings

SubliJet-E Professional: Epson Stylus Pro 7700 PowerDriver-E User's Manual

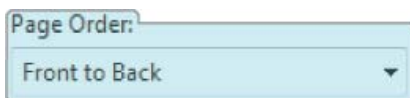
SECTION 6



Portrait With this selection the page height is longer than the width. In other words, the image is printed vertically from top to bottom.

Landscape With this selection the page width is longer than the height. In other words, the image is printed horizontally from left to right.

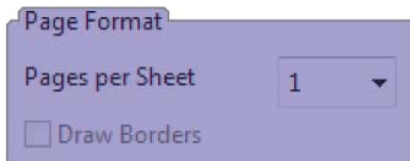
SECTION 7



Front to Back Using this setting will print the first image first and the last image last. For instance, if 4 different images are printed at the same time, they will print in the following order: 1, 2, 3 and 4.

Back to Front Using this setting will print the last image first and the first image last. For instance, if 4 different images are printed at the same time, they will print in the following order: 4, 3, 2 and 1.

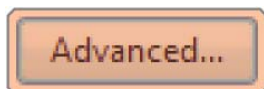
SECTION 8



Pages per Sheet Allows you to fit multiple pages on a single sheet of paper. The default value 1 should be used when printing one image/page per sheet.

Draw Borders Prints frames around the pages printed on each sheet.

SECTION 9



Document Settings Click here for an overview of the default advanced document settings. These settings have been specifically engineered per printer platform and should not be adjusted by the end user.

SubliJet-E Professional: Epson Stylus Pro 7700 PowerDriver-E User's Manual

5. At the top of the PowerDriver E 7700 Printing Preference window, click the **Paper/Quality** tab. Here you will find three different **SECTIONS** to utilize: (see *FIGURE 5*).

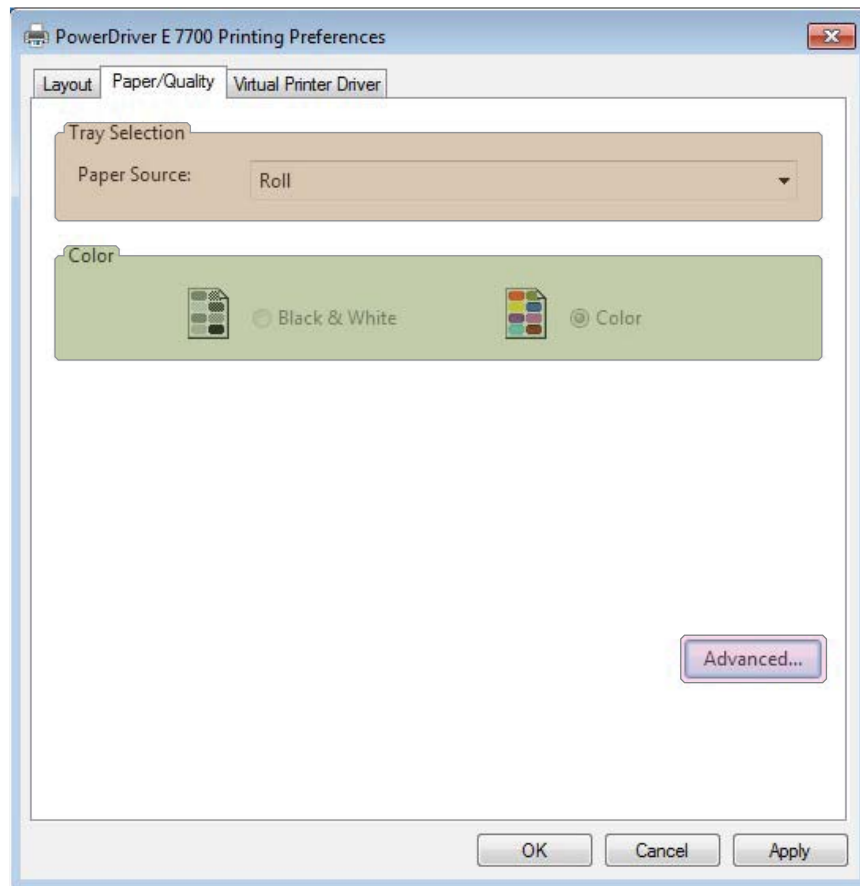


FIGURE 5

- SECTION 10** Tray Selection Allows you to select the printer's paper source
- SECTION 11** Color This default is locked and controlled by PowerDriver-E
- SECTION 12** Advanced... Access the current Document Settings

SubliJet-E Professional: Epson Stylus Pro 7700 PowerDriver-E User's Manual

SECTION 10



Automatically Select Use this setting if you would like the printer driver to select the appropriate paper source.

Roll Use this setting if you print using rolls of transfer paper. It is recommended to set this as your default paper source.

Sheet Feed Use this setting if you would like to manually load cut sheets into the printer.

SECTION 11



Black & White This setting has been specifically engineered per printer platform and should not be adjusted by the end user.

Color This setting has been specifically engineered per printer platform and should not be adjusted by the end user.

SECTION 12



Document Settings Click here for an overview of the default advanced document settings. These settings have been specifically engineered per printer platform and should not be adjusted by the end user.

For the absolute latest information and updates on all products, materials, processes and/or procedures relative to all offerings by or through Sawgrass Technologies, Inc., please refer to our website:

www.sawgrassink.com