

Zephyr-E

Non-penetrating Captive Bolt Dispatch Tool

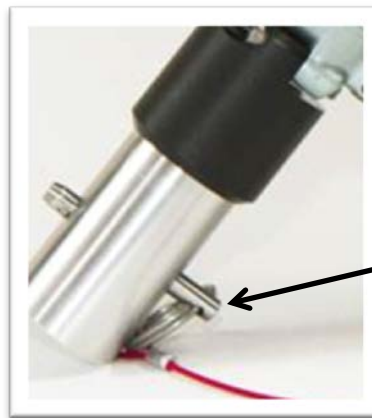


1. Operator and bystander safety is your first priority.

⚠ DANGER

This Captive Bolt Tool is for Animal Dispatch Only!
Improper use of this tool can result in death or serious injury!
Never point this tool at yourself or others in the work area!

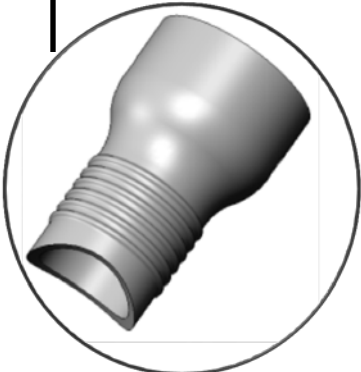
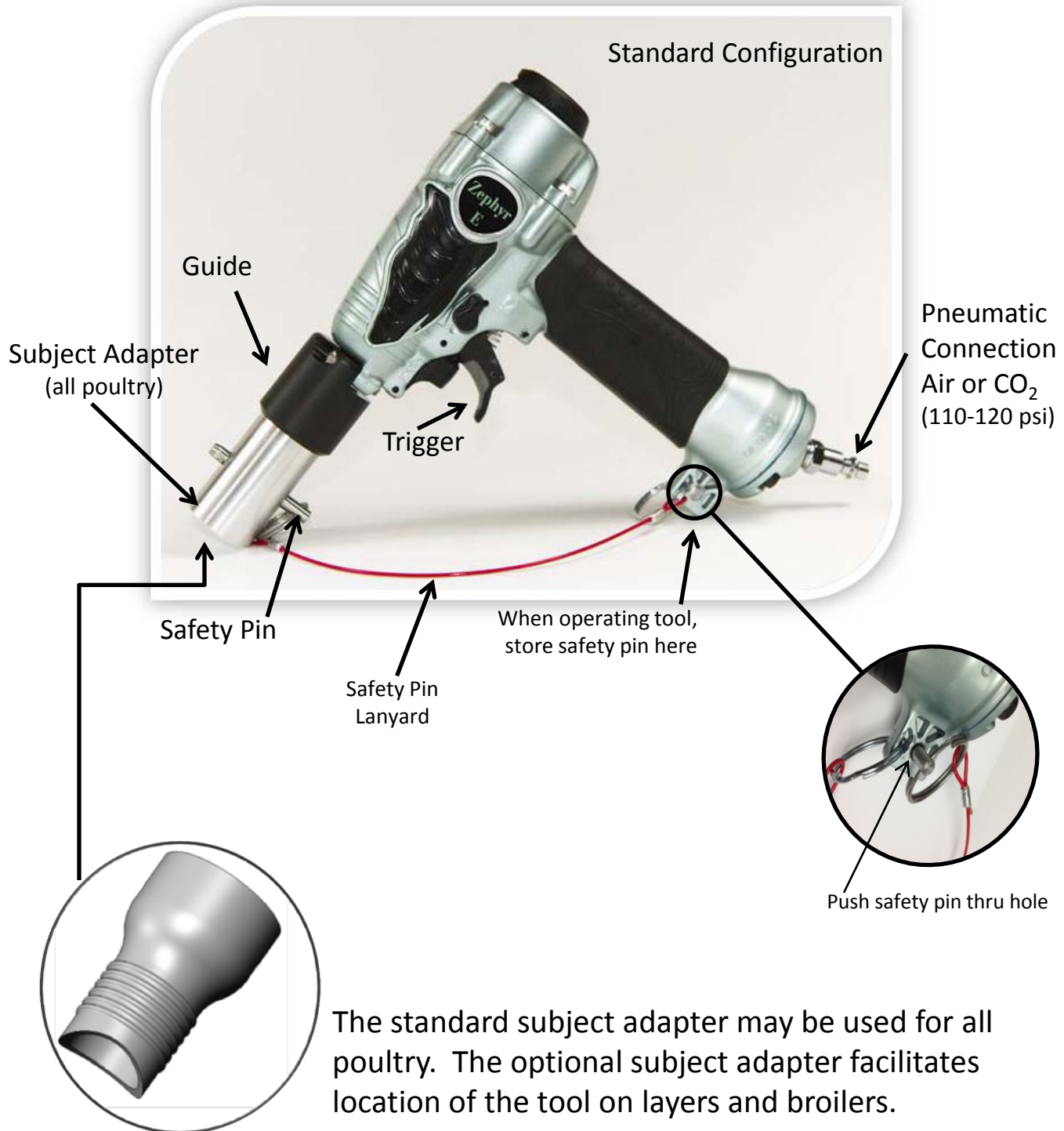
2. Safety pin must be inserted when tool is not in use.



Safety Pin

3. Always disconnect tool from the pneumatic power source when leaving the tool unattended.
4. Operators must be trained to evaluate the physical signs of subject insensibility.
 - ✓ *pupillary light reflex*
 - ✓ *corneal reflex*

Component Identification



Optional Subject Adapter
(chicken only)

The standard subject adapter may be used for all poultry. The optional subject adapter facilitates location of the tool on layers and broilers.

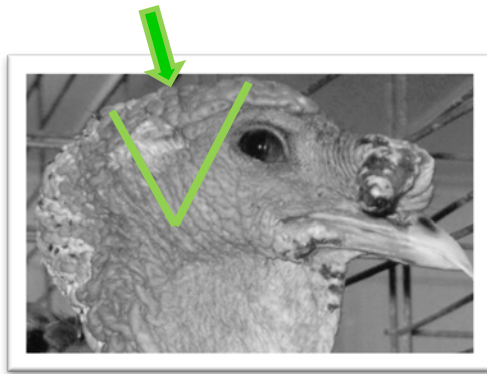
Set-Up, Use & Maintenance

Set-Up

1. Ensure safety pin is in place.
2. Connect Zephyr-E to 120 psi pneumatic source.
3. Remove safety pin, point in a safe direction, and test fire.
4. Replace safety pin.

Use

1. ***Subject's head must be supported on a firm surface.***
2. **All Poultry:** Look from the side and locate a point midway between the back of eye and center of the ear; using this point locate the tool on the top center of the head.

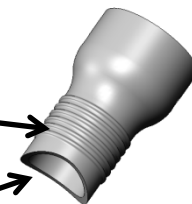


2. **Chicken:** Center the tool on top of head and move the *subject adapter* forward until the cutout region is in contact with the rear of the comb (as shown).



Optional Subject Adapter
(chicken)

Cutout Region



Set-Up, Use & Maintenance

Use (continued)

3. Remove safety pin.
4. In one motion: Press the tool firmly on target and immediately squeeze the trigger. (If the subject is large: Fire twice in quick succession as needed.)
5. Confirm physical signs of insensibility: e.g. corneal reflex

Maintenance

1. Disconnect tool from pneumatic power source.
2. Unscrew *subject adapter* from *guide* to expose captive bolt.
3. Clean and disinfect exposed *bolt* and *subject adapter*.
4. Reassemble *subject adapter*.
5. Replace *safety pin*.
6. Apply 2 drops of air tool lubrication into hose connection.
7. Connect to air line, remove safety pin and confirm firing.
8. Disconnect air line and replace *safety pin*.
9. Return tool to case.
10. Return case to securely locked location.

CO₂ Power Supply (optional)



Set-Up

1. Read the CO₂ Power Supply User Manual and identify all component parts: *Regulator, Hose, Canister, Safety glasses*
2. Fill the CO₂ canister: Sporting goods retailers carrying “Paintball” supplies, Industrial gas supply, etc.
3. Set pressure regulator to 120 psi.
4. The 9 oz. canister provides 400 firings.
5. Maintain shot count record and keep spare canister nearby.
6. Canister weight is the most reliable measure of CO₂ level.



Hook tool hanger on belt

