



**SOUNDS SUITE**

KIWA INTERNATIONAL LIMITED

**VoiceQ *ADR***  
**&**  
**VoiceQ *DUB***  
**Quickstart Guide**

**VoiceQ® ADR version 1.7.5**

**VoiceQ® DUB version 1.7.5**



Digidesign  
Development Partners

## Table of Contents

<b>INTRODUCTION.....</b>	<b>3</b>
<b>SYSTEM REQUIREMENTS.....</b>	<b>3</b>
<b>INSTALLING VOICEQ 1.7.....</b>	<b>4</b>
<b>DEMO PROJECTS.....</b>	<b>4</b>
<b>AUTHORIZATION.....</b>	<b>4</b>
<b>WHAT'S NEW IN 1.7.5.....</b>	<b>1</b>
Improvements.....	1
<b>FEATURES ADDED IN 1.7.4.....</b>	<b>1</b>
Improvements.....	1
<b>FEATURES ADDED IN 1.7.2 &amp; 1.7.3.....</b>	<b>1</b>
Improvements.....	1
New Commands.....	2
New transport commands.....	2
Multiple Undo / Redo.....	2
<b>GENERAL FEATURES ADDED IN VOICEQ 1.7 SERIES.....</b>	<b>3</b>
Improved Graphics Engine.....	3
New Cueing Options.....	3
Beeps with optional visual countdown.....	3
Visual Streamers.....	3
<b>NEW DISPLAY OPTIONS.....</b>	<b>3</b>
Scrolling Ruler.....	3
Scrolling Waveform.....	3
<b>IMPROVED TRANSPORT CONTROLS.....</b>	<b>3</b>
<b>NEW DISPLAY AND CUEING CONTROLS.....</b>	<b>4</b>
<b>SYSTEM PREFERENCES.....</b>	<b>4</b>
General Preferences Window.....	5
Display Preferences Window.....	6
Cues Preferences Window.....	7
<b>PROJECT SETTINGS WINDOW.....</b>	<b>8</b>
<b>QUICKSPOT.....</b>	<b>8</b>
<b>IMPROVED AUTO-SAVE FUNCTION.....</b>	<b>9</b>
<b>IMPROVED TIMECODE ENTRY.....</b>	<b>9</b>
<b>USING VOICEQ WITH PRO TOOLS 7.2.....</b>	<b>1</b>
Enable the IAC Bus.....	1
Time Code Settings.....	2
MIDI Machine Control.....	3
MIDI Beat Clock.....	4
Video Scrubbing.....	4
Enabling MMC cueing (MIDI Locate) of Pro Tools.....	5
<b>USING VOICEQ WITH PRO TOOLS 7.3 AND 7.4.....</b>	<b>7</b>
Enable the IAC Bus.....	7
Time Code Settings.....	8
MIDI Machine Control.....	9
MIDI Beat Clock.....	9
Video Scrubbing.....	10
Enabling MMC cueing (MIDI Locate) of Pro Tools.....	10
<b>QUICK KEYS REFERENCE GUIDE.....</b>	<b>12</b>
<b>SUPPORT.....</b>	<b>14</b>

## Introduction

*This guide documents how to install the VoiceQ ADR and VoiceQ DUB applications. For the purposes of this guide both applications are referred to as VoiceQ. User training and advice is available as part of your initial license to use VoiceQ. Should you require additional training at any time please contact KIWA International Ltd or its representatives listed on page 16.*



Note: This guide assumes the user has working knowledge of Mac OS X and an understanding of Video and Audio formats. For complete step-by-step instructions please refer to the VoiceQ User Manual.

## System Requirements

VoiceQ software can be used with any Apple Macintosh computer with the G4 (1.25Ghz or faster), G5 or Intel range of processors. VoiceQ requires Mac OS X Tiger (10.4) or Leopard (10.5). A DVD-ROM drive is required to install from the DVD Demonstration Pack.

With the purchase of your license to use this application, you will receive the following items:

1. VoiceQ Installer and Manual
2. VoiceQ License Key



Note: This software will operate on Mac OS X only.



Please visit our [website](#) for a complete list of system requirements.

## Installing VoiceQ 1.7

*This chapter explains how to install and configure VoiceQ 1.7 on a compatible Apple Mac computer.*

1. Close down all other applications
2. From DVD - Insert installation disk into DVD drive and copy the VoiceQ Folder to your Applications Folder
3. From Download - Unzip the downloaded file and copy the VoiceQ Folder to your Applications Folder
4. Open the VoiceQ Folder and Launch VoiceQ by double clicking the application
5. You may be prompted to download and install the latest version of PACE's interlok extensions which are required for VoiceQ to run. A version of these extensions is included in the VoiceQ Folder **Installers > Interlok\_extensions.zip**.
6. Press the 'Try' button to use VoiceQ's 30 day free demo.
7. If you wish to authorize your copy of VoiceQ press the 'Buy' button and choose the appropriate authorization method.

Your software is now installed

-  Note: If you have purchased VoiceQ please keep reading for instructions on authorizing your software.
-  If your evaluating VoiceQ before you purchase, please enjoy your free 30 day full feature trial. You can find demo projects on the installer disk or on our [website](#).

## Demo Projects

The VoiceQ installer disc includes a folder of demo projects and Quicktime movies. Copy these to your usual video or audio work drive. Also included on the DVD are 'Test Leader' quicktime files to test and confirm correct output of VoiceQ on your external monitor or display system. Demo project packs are also available on our [website](#).

## Authorization

VoiceQ provides a 30 day fully featured trial period for evaluation. If you wish to use VoiceQ after this period you will need to purchase a license.

If you already have an iLok USB smartkey:

1. Contact [sales@voiceq.com](mailto:sales@voiceq.com) to purchase a license. Include your iLok.com username.
2. We will credit your iLok.com account with a license.
3. Download the license to your iLok USB smartkey using the iLok.com website.
4. Plug the iLok USB key into the Mac you have VoiceQ installed on.
5. VoiceQ will automatically recognize your iLok and is now ready to use.

If you require us to supply an iLok USB smartkey:

1. Contact [sales@voiceq.com](mailto:sales@voiceq.com) to purchase a license. Include your preferred [iLok.com](http://iLok.com) username and email address. Also include your shipping address, so we can send you the USB smartkey.
2. We will create your iLok.com account and authorize the USB smartkey.

3. We will ship the USB smartkey to you.
4. Plug the iLok USB key into the Mac you have VoiceQ installed on.
5. VoiceQ will automatically recognize your iLok and is now ready to use.

## **What's New in 1.7.5**

### **Improvements**

- QuickTime 7.5 compatibility
- Compatibility with OSX Tiger versions prior to 10.4.10
- Video display latency compensation
- MIDI/GPI Trigger for streamers
- New User Manual, including separate instructions for ProTools 7.2, 7.3 and 7.4 settings

## **Features Added in 1.7.4**

### **Improvements**

- New Preference to cue Pro Tools (or any DAW) via MMC - VoiceQ can now cue Pro Tools when a line is selected - with adjustable preroll
- Opens first scene of project by default
- Updated how selected line is highlighted - text now goes bold and line has drop shadow to stand out from page
- Updated edit functions and undo/redo
- Updated timeline
- Updated MIDI sync
- VoiceQ can now be taken offline while it is chasing timecode (command J)
- VoiceQ net connection to QML now uses 128 bit encrypted SSL connection
- Added new error reporting - all errors are now logged to the system console/log
- Fixed character color bug - where on some projects colors would get lighter each time the session was saved
- Updated text file import from Script Import Manager (SIM)

## **Features Added in 1.7.2 & 1.7.3**

### **Improvements**

- The whole audio waveform is now shown after associating a quicktime movie
- Only the movie name is displayed in the project settings window, not the full path
- Fixed occasional crash when spotting lines with quickspot
- Fixed quickspot timecode to be more accurate
- Increased the size of the scroll bars
- VoiceQ no longer quits when the current project is closed, it now presents a new project
- Added more Tooltips in preferences pane

- Window panes now remember positions across projects
- Edit long lines of text in script view - text lines now expand to show 2 lines of text for longer script lines

## New Commands

Adjusting the position of words in the timeline is now greatly improved.

- Hold down control key to move all words before the selected word while dragging
- Hold down option key to move all words before and after the selected word while dragging
- Hold down command key to move all words after the selected word while dragging
- Cut (⌘X), copy (⌘C) and paste (⌘V) whole lines in the timeline

## New transport commands

- Command plus (⌘+) or minus (⌘-) to locate forward or backward 1 frame
- Option command plus (⌥⌘+) or minus (⌥⌘-) to locate forward or backward 1 second
- Control option command plus (⌘⌥⌘+) or minus (⌘⌥⌘-) to locate forward or backward 10 seconds
- Hover the pointer over the timeline, hold shift and use the scroll wheel on your mouse to scroll the timeline window left or right
- Control spacebar to play currently selected line with pre-roll - set preroll time in the preferences

## Multiple Undo / Redo

VoiceQ now features multiple levels of undo:

- Command Z (⌘Z) to undo the previous action
- Shift command Z (⇧⌘Z) to redo the previous action

## General Features added in VoiceQ 1.7 Series

### Improved Graphics Engine

VoiceQ 1.7 features a completely new rendering engine, taking full advantage of Apples Core Video and OpenGL technology. All rendering is now handled by the Graphics Card, resulting in a significant reduction in CPU load.

### New Cueing Options

VoiceQ 1.7 introduces a new range of cueing options in addition to the patented VoiceQ scrolling method:

### Beeps with optional visual countdown

Traditional audio beep countdown (also called pips) for audio cueing of Voice Talent. Beeps can be set to play on the currently highlighted line only or all lines. The volume, frequency, duration and timing is adjusted in **Preferences > Cues > Beeps**. Optional visual countdown provides a 3, 2, 1, Go count on the output display.

### Visual Streamers

Traditional visual streamer (also called a wipe) that shows 2 vertical bars superimposed over the picture. The two bars start at either side of the screen and the voice talent starts when the left hand bar hits the right hand target bar. Streamers are color coded by character. The width, height, position, color and duration can be adjusted in **Preferences > Cues > Streamers**.

## New Display Options

### Scrolling Ruler

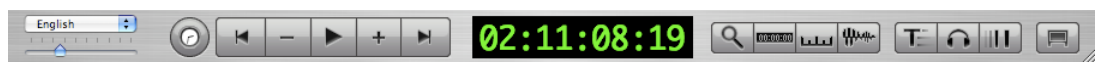
Scrolls a ruler onscreen in feet and half feet. The altitude and size can be adjusted in **Preferences > Display > Scrolling Ruler**.

### Scrolling Waveform

Scrolls the audio waveform of the movie. The altitude, size and transparency can be adjusted in **Preferences > Display > Scrolling Waveform**. This feature is very useful during preparation as it allows you to see the words and the waveform side by side to ensure exact sync.

## Improved Transport Controls

VoiceQ now has a larger timecode readout display and conventional transport controls, featuring a play/stop button (spacebar), frame advance (plus +) frame rewind (minus -) buttons and locate to start (return key) and end of project buttons.



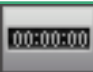



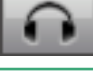






## New Display and Cueing Controls

VoiceQ 1.7 introduces a range of new display and cueing options.

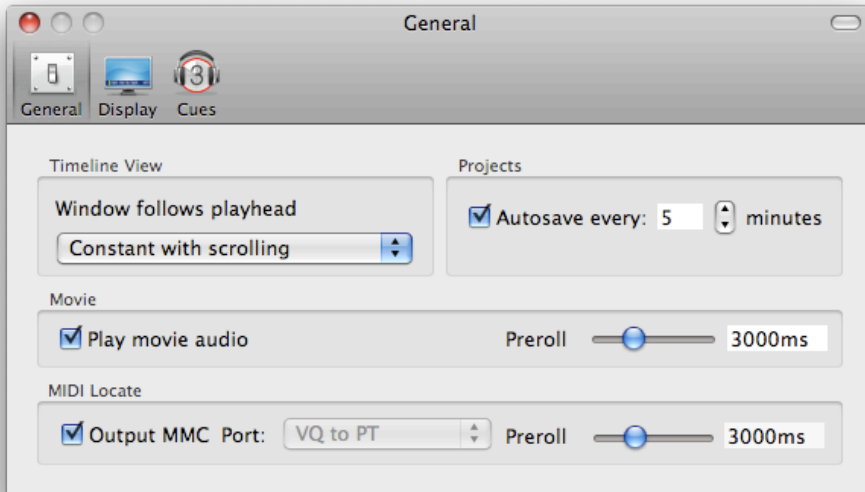
### Display and Cueing Controls

Feature	Control	Quick Key	Function
Chase External MTC		⌘J	Chase external MIDI timecode. Toggles On and Off
Preview Line		F1	Displays a static preview of the highlighted line onto the display. Toggles On and Off
Show Time-code		F2	Outputs VoiceQ timecode onto the display. Toggles On and Off
Show Scrolling Ruler		F3	Outputs feet and half feet Ruler onto the display. Toggles On and Off
Show Scrolling Waveform		F4	Outputs waveform onto the display. Toggles On and Off
Show Scrolling Text		F5	Outputs VoiceQ scrolling text onto the display. Toggles On and Off
Audible Beep Countdown		F6	Plays audible beep countdown on selected line or all lines. Toggles: On selected line, On all lines and Off
Show Visual Streamer		F7	Outputs visual streamer onto the display. Toggles: On selected line, On all lines and Off
Display on External Monitor		F8	Outputs movie to external monitor. Toggles between internal and external monitor

## System Preferences

In addition to the new Display Controls, Cueing Controls and Quick Keys VoiceQ 1.7 includes new VoiceQ Preferences Window. This is designed to enable Users to access and customize all feature settings to their requirements.

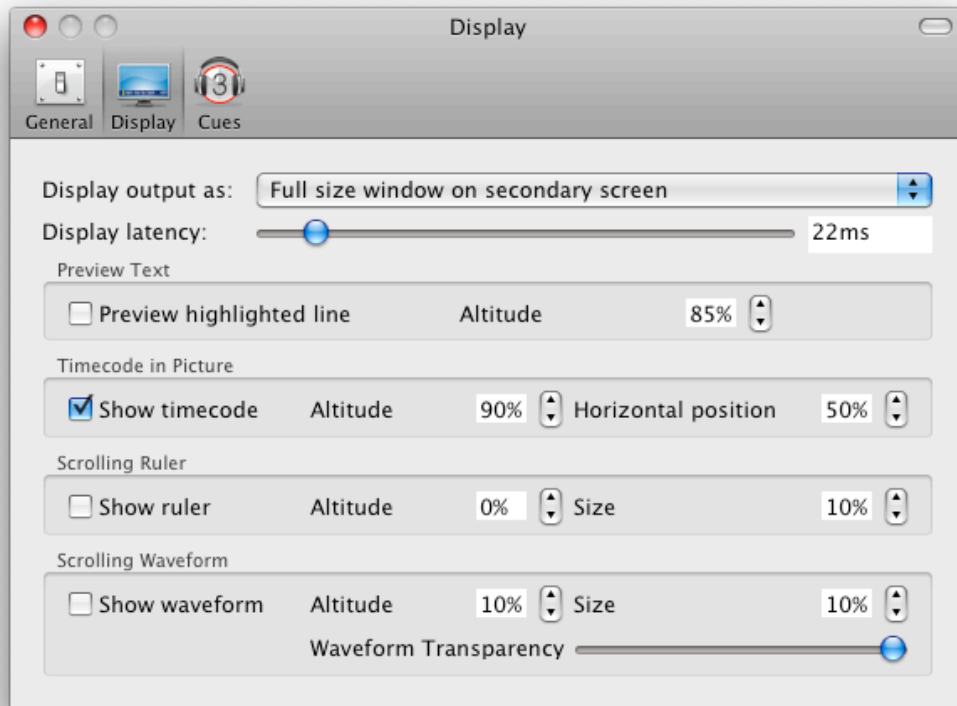
## General Preferences Window



The general preference window allows you to:

- Adjust the scrolling behavior of the timeline view
- Set the Autosave options
- Play/Mute the Movie audio
- Adjust the Preroll value
- Set the MIDI Machine Control of Pro Tools

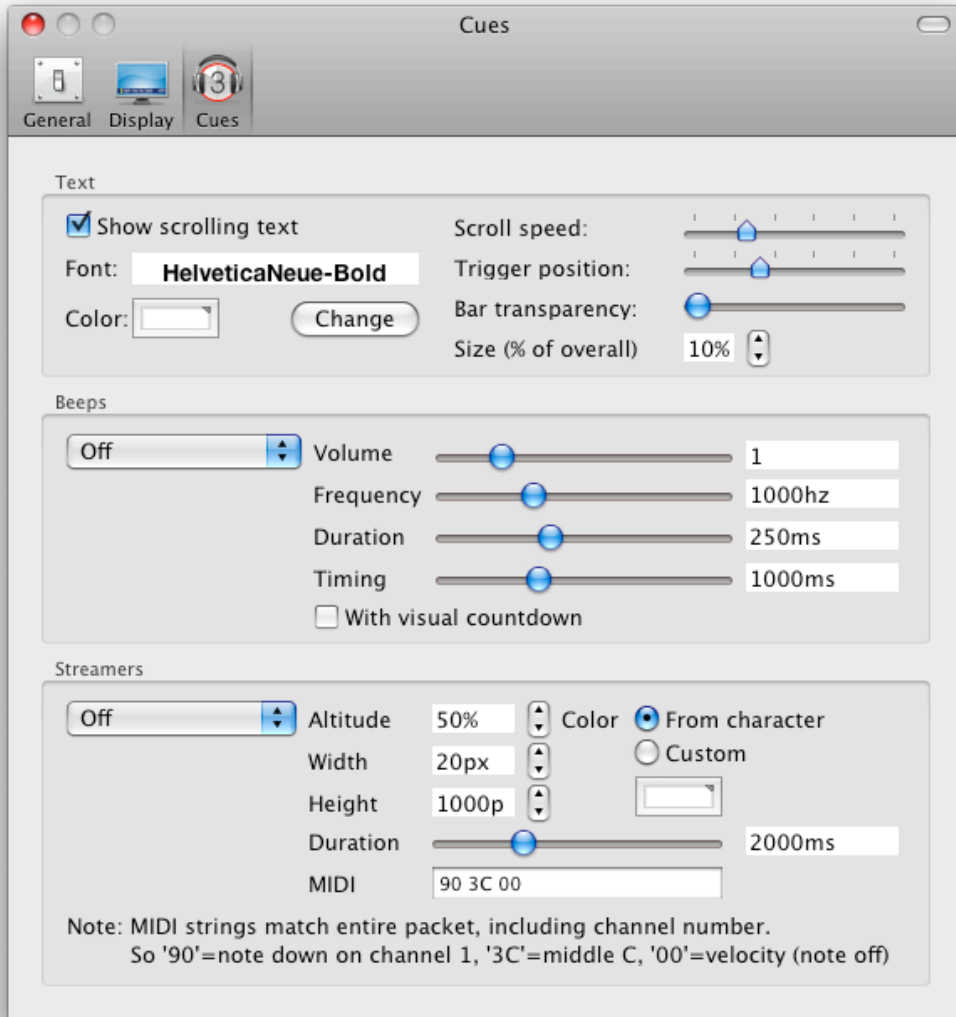
## Display Preferences Window







The display preference window allows you to:

- Display the movie on an internal or external monitor
- Sets the display latency compensation in milliseconds. Use this to compensate for video latency introduced in the display chain by devices such as LCD, Plasma displays or Projectors.
- Display the highlighted line and adjust the altitude position
- Display the timecode and adjust the altitude and horizontal positions
- Display the ruler in feet and half feet and adjust the altitude and size
- Display the waveform and adjust the altitude, size and color transparency

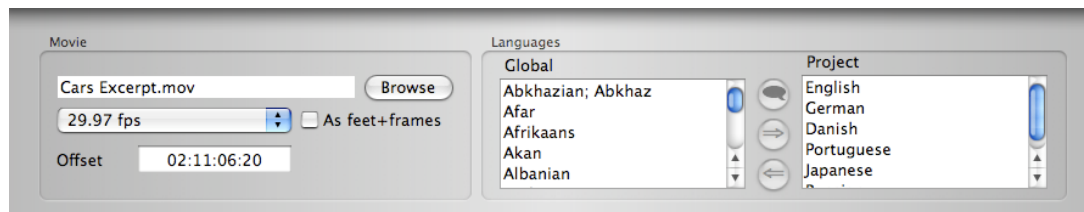
## Cues Preferences Window



The cues preference window allows you to:

-  Display the scrolling text and adjust the font, text color, scroll speed, trigger position, bar transparency and size
-  Play audible beeps on a highlighted line or all lines and adjust the volume, frequency, duration, timing and with visual countdown
-  Display streamers on a highlighted line or all lines and adjust the altitude, width, height, duration and the color of the streamer bar
-  Set the MIDI/GPI event information that will trigger the MIDI streamer. This allows you to trigger streamer events from an external source

## Project Settings Window



The project settings window allows you to:

- Browse and associate a QT movie to the project
- Set the frame rate
- Display timecode values as feet and frames
- Set a project offset
- Add languages
- Set the primary language

## Quickspot

A powerful new feature in 1.7 is QuickSpot that provides 'one button' spotting of dialogue lines.

1. Simply select the dialogue line you wish to spot.
2. Locate the desired start point for the line in the timeline.
3. Press the comma key (,) to set the start timecode of the selected line to the current location.
4. Locate the desired end point for the line and press the period key (.) to capture the current timecode to the selected line's end timecode.
5. Use the slash key (/) to select the next line of dialogue.
6. Use the (m) key to select the previous line.

QuickSpot may be used during playback, allowing you to simply play a scene down and spot each line to its location. You can then "tweak" the timing of the words by grabbing and dragging them to achieve more accurate sync.

### QuickSpot Controls

Feature	Quick Key	Function
Select previous line	m	Selects previous line for spotting
Select next line	forward slash (/)	Selects next line for spotting
Quickspot line start	comma (,)	Spots the start of a highlighted line to the timeline
Quickspot line end	period (.)	Spots the end of a highlighted line to the timeline

## ***Improved Auto-Save Function***

VoiceQ will now autosave backup copies of your project into a folder in your documents directory.

## ***Improved Timecode Entry***

Timecode may now be entered without colons separating the fields.

Additionally, leading zeros may also be omitted, as VoiceQ will add them for you.

eg. entering 13000 converts to 00:01:30:00

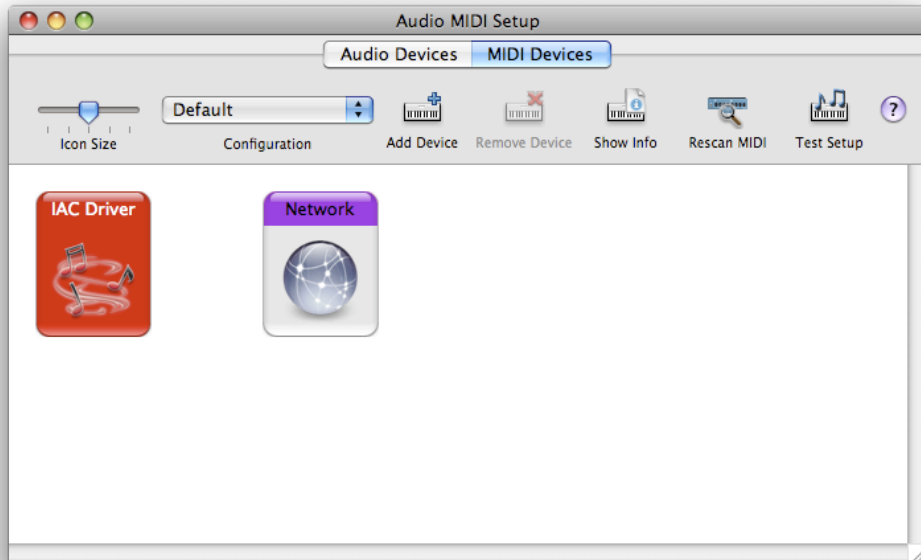
## Using VoiceQ with Pro Tools 7.2

### ENABLE THE IAC BUS

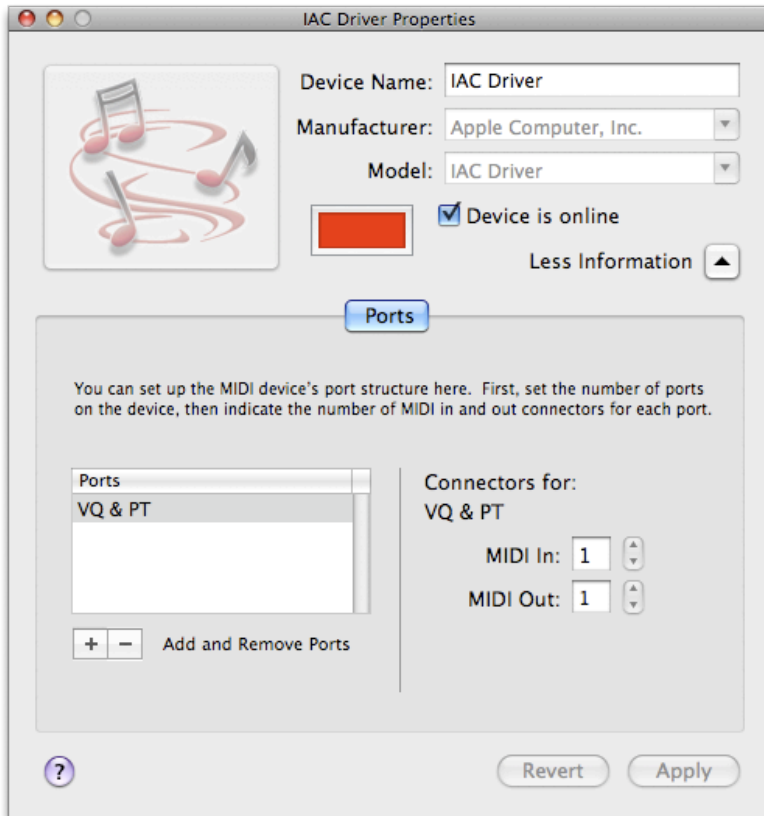
To enable Inter Application Communication (IAC) between VoiceQ and Pro Tools:

1. Open the **Audio MIDI Setup** utility on your Mac HD.

Macintosh HD > Applications > Utilities > **Audio MIDI Setup**



2. Double click the red **IAC Driver** icon
3. Check the **Device is Online** check box
4. Rename the Bus to **VQ & PT**
5. Apply the changes
6. Quit Audio MIDI setup
7. Reboot for the changes to take affect



### Pro Tools 7.2 settings:

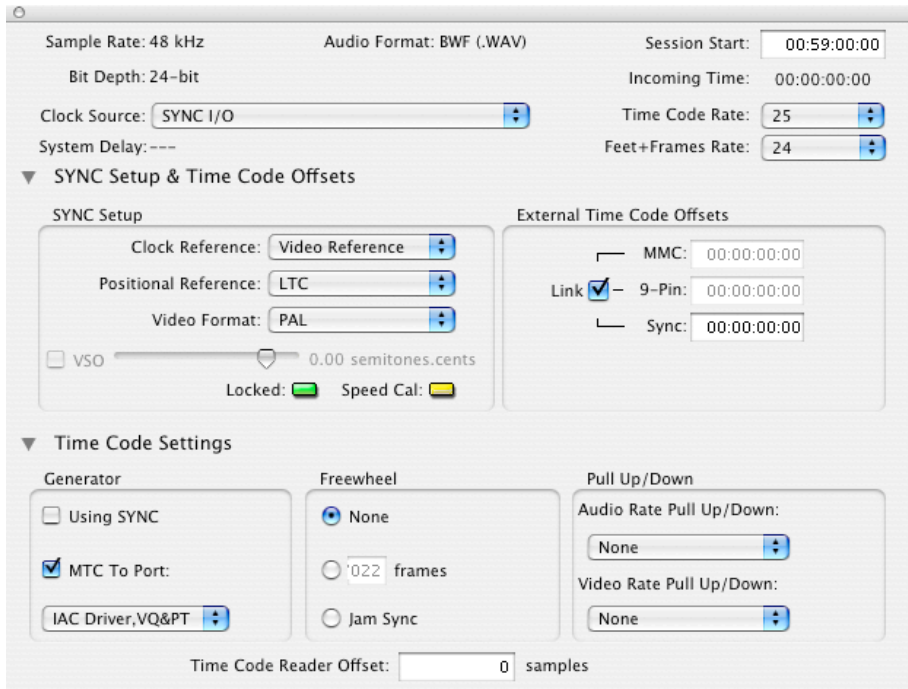
There are five areas within Pro Tools that need to be configured to enable VoiceQ to chase correctly.

### TIME CODE SETTINGS

In [Figure 5.6](#) below set Timecode Settings from the Session Set Up window to:

- ⦿ Time Code Settings > Generator: enable **MTC To Port**
- ⦿ Select: **IAC Driver, VQ & PT**



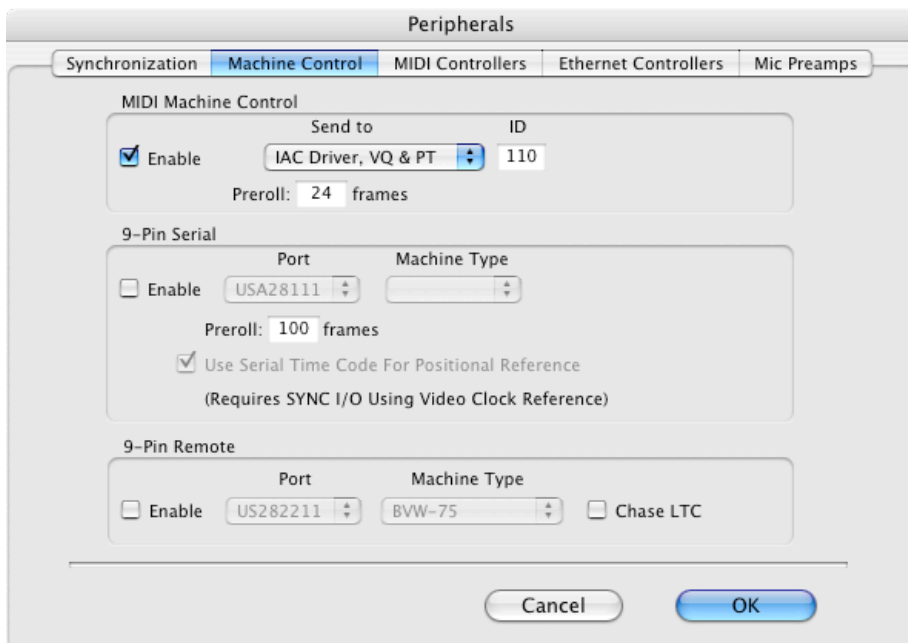


**MIDI MACHINE CONTROL**

In the Pro Tools / Peripherals window (Machine Control tab) set MIDI Machine Control to:

- Select Enable
- Send To: Select **IAC Driver, VQ & PT**
- Set the MMC ID to 110

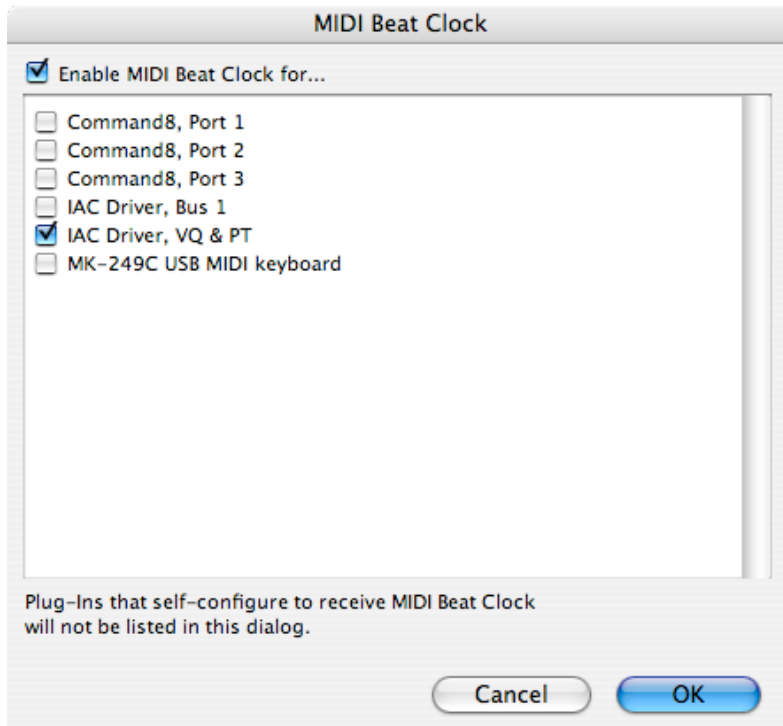
Refer screen shot below:



### MIDI BEAT CLOCK

- In the Pro Tools / MIDI window: **Enable MIDI MIDI Beat Clock for...**
- Enable: **IAC Driver, VQ & PT**

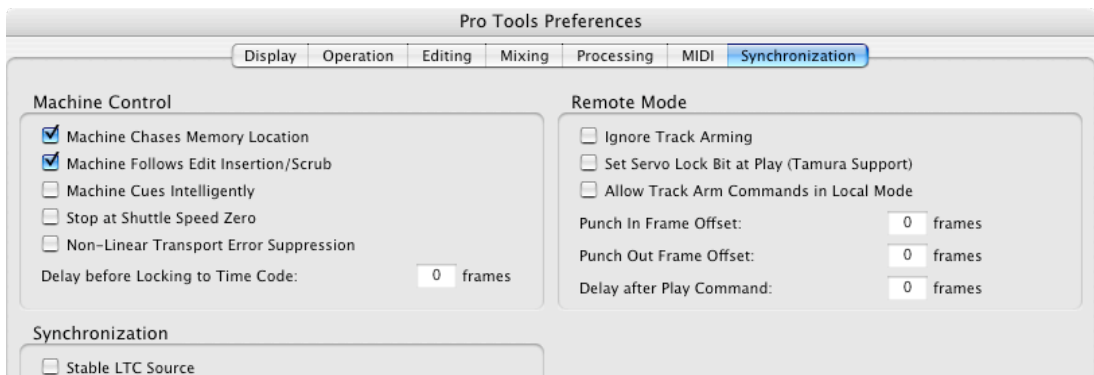
Refer screen shot below:



### VIDEO SCRUBBING

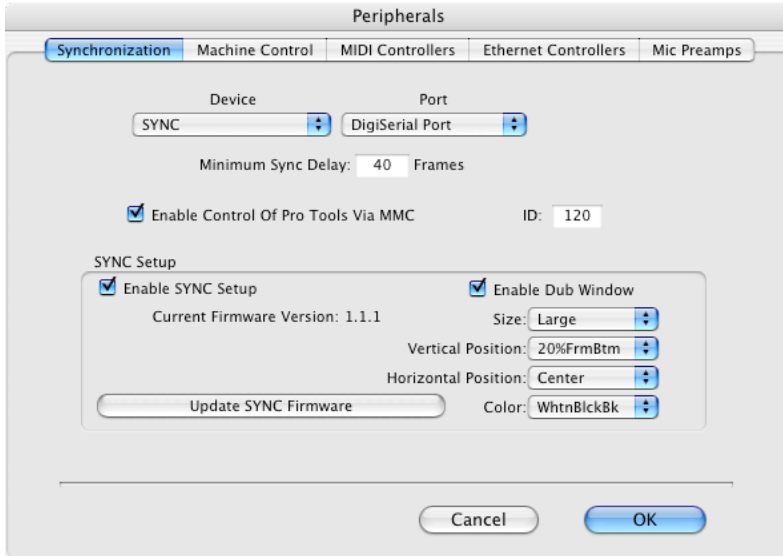
Open the Pro Tools Preferences and select the Synchronization tab.

- Check the Machine Chases Memory Location and the Machine Follows Edit Insertion/Scrub as in the screen shot below.



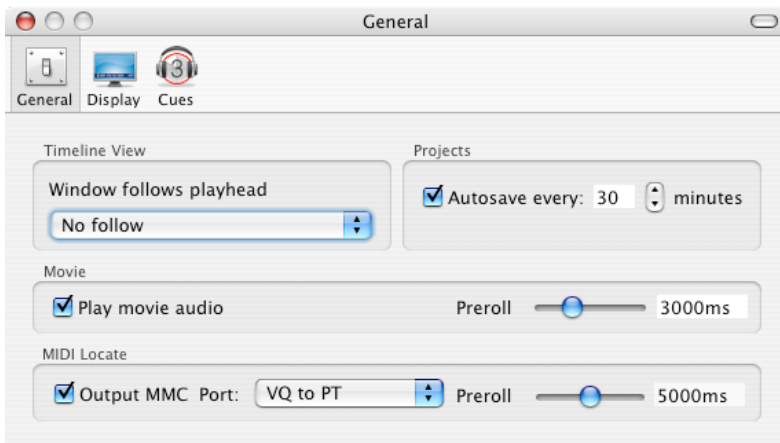
**ENABLING MMC CUEING (MIDI LOCATE) OF PRO TOOLS**




To enable MMC cueing of Pro Tools from VoiceQ you will also need to check the **Enable Control Of Pro Tools Via MMC** option in Peripherals > Synchronization in Pro Tools. Change the MMC ID to 120.



In VoiceQ:

- Check the **Output MMC**
-  Select **MIDI Locate > Output MMC Port > VQ to PT** to activate the MIDI locate option.



-  VoiceQ will now chase the incoming MIDI timecode from ProTools.
-  VoiceQ will also scrub the video and scroll text in response to the MIDI machine control.
-  MIDI Beat clock is used for additional synchronization accuracy.

- The transport controls in VoiceQ can also be used, even when VoiceQ is waiting for external MTC.
- To have VoiceQ chase incoming MTC from Pro Tools click on the 'Chase External Timecode' button in the transport section or use the Quick Key ⌘J.

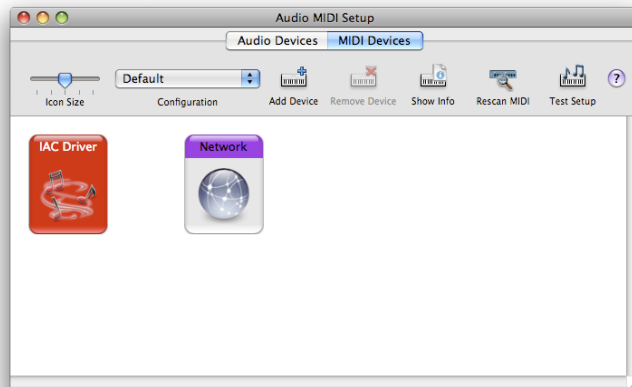
## Using VoiceQ with Pro Tools 7.3 and 7.4

### ENABLE THE IAC BUS

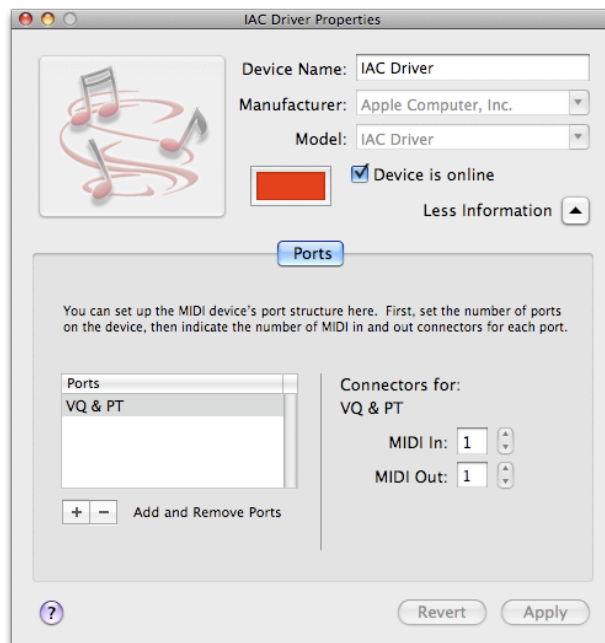
To enable Inter Application Communication between VoiceQ and Pro Tools:

1. Open the **Audio MIDI Setup** utility on your Mac HD.

Macintosh HD > Applications > Utilities > **Audio MIDI Setup**



2. Double click the red **IAC Driver** icon
3. Check the **Device is Online** check box
4. Rename the Bus to **VQ & PT**
5. Apply the changes
6. Quit Audio MIDI setup
7. Reboot to effect changes




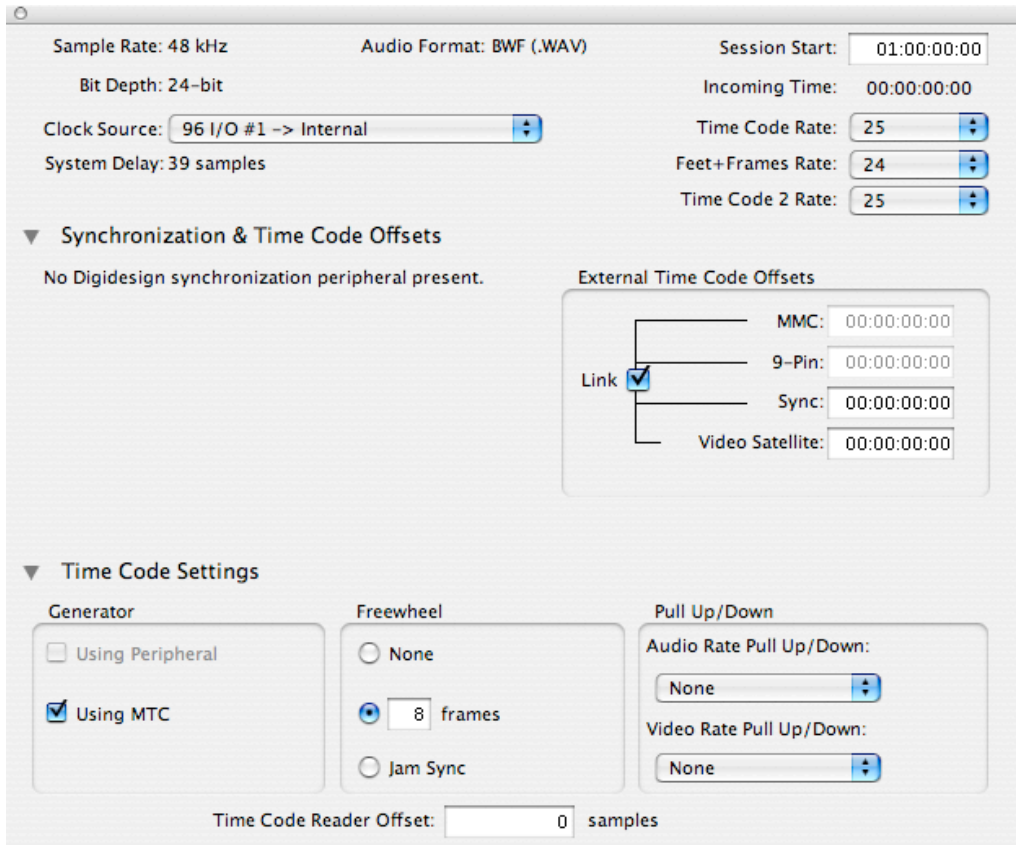
**Pro Tools 7.3 and 7.4 settings:**

There are five areas within Pro Tools that need to be configured to have VoiceQ chase correctly. As of Pro Tools version 7.3 onwards these preferences have moved location.

**TIME CODE SETTINGS**

In the screen shot below enable Using MTC in the Session setup window.

 Timecode Settings > Generator > **Using MTC**

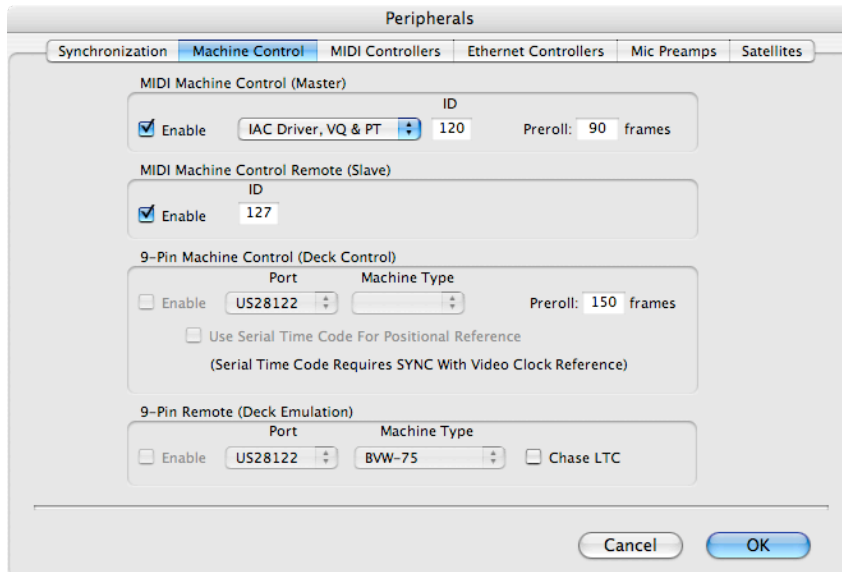


### MIDI MACHINE CONTROL

In the Pro Tools Peripherals window (Machine Control tab) set MIDI Machine Control to:

- Select Enable
- Send To: Select **IAC Driver, VQ & PT**
- Set the MMC Master ID to 120

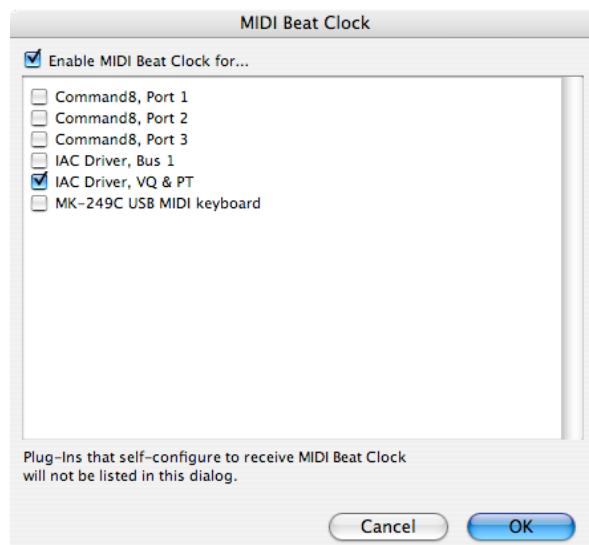
Refer screen shot below:



### MIDI BEAT CLOCK

- In the Pro Tools > MIDI > MIDI Beat Clock window: Check **Enable MIDI Beat Clock for...**
- Check: **IAC Driver, VQ & PT**

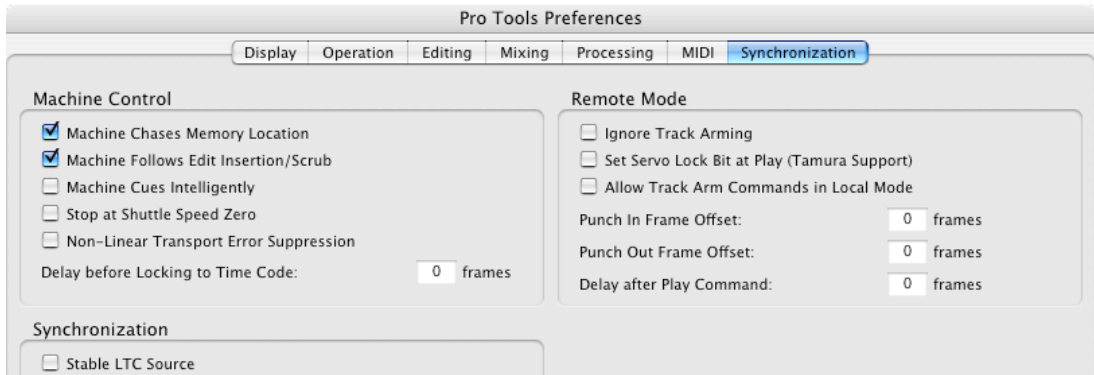
Refer screen shot below:



## VIDEO SCRUBBING

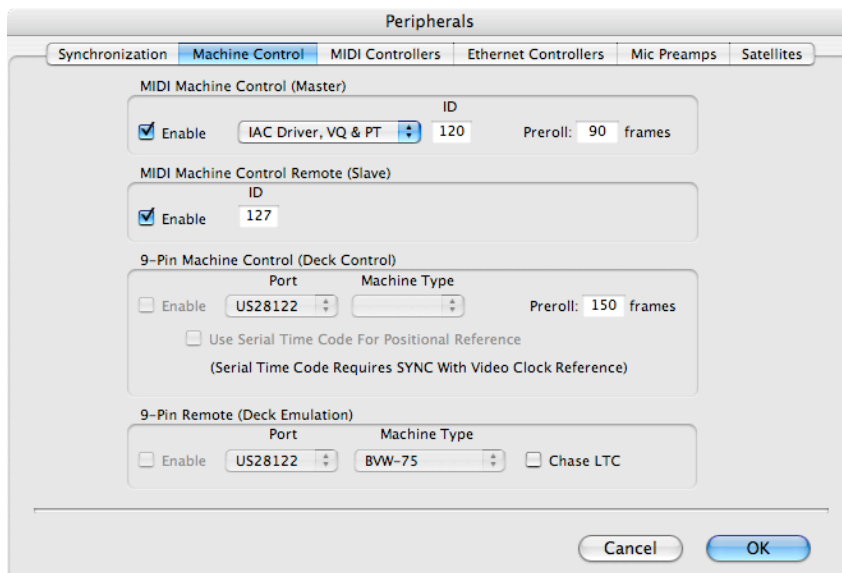
Open the Pro Tools Preferences and select the Synchronization tab.

Check the **Machine Chases Memory Location** and the **Machine Follows Edit Insertion/Scrub** as in the screen shot below:



## ENABLING MMC CUEING (MIDI LOCATE) OF PRO TOOLS

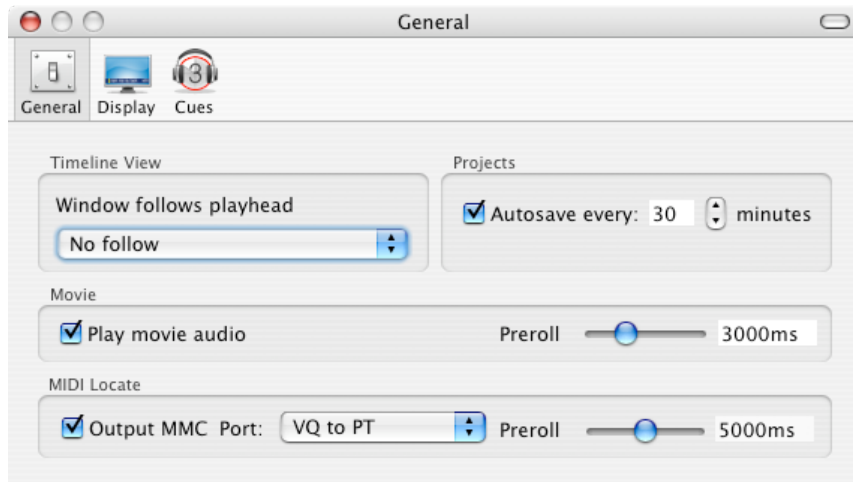
To enable MMC cueing of Pro Tools from VoiceQ you will also need to check the **MIDI Machine Control Remote (Slave)** option in **Peripherals > Machine Control** in Pro Tools. Set the Remote MMC ID to 120.





In VoiceQ:

- ☑ Check the **Output MMC** and select **MIDI Locate > Output MMC > VQ to PT** to activate the MIDI locate option.



- 🔊 VoiceQ will now chase the incoming MIDI timecode from ProTools.
- 🔊 VoiceQ will also scrub the video and scroll text in response to the MIDI machine control.
- 🔊 MIDI Beat clock is used for additional synchronization accuracy.
- 🔊 The transport controls in VoiceQ can also be used, even when VoiceQ is waiting for external MTC.
- 🔊 To have VoiceQ chase incoming MTC from Pro Tools click on the '**Chase External Timecode**' button in the transport section or use the Quick Key ⌘J.

## Quick Keys Reference Guide

This chapter provides the full list of VoiceQ Quick Keys

Feature	Quick Key	Function
Add line	⌘L	Allows you to manually insert a line at the selected point
Add Scene	⌘=	Allows you to manually insert a scene at the selected point
Advance 1 frame	⌘+	Forward one frame
Advance 1 second	⇧⌘+	Forward one second
Advance 10 seconds	⇧⇧⌘+	Forward ten seconds
Audible Beeps	F6	Play audible beeps countdown on a highlighted line or all lines
Characters...	⌘8	Reveals or hides the Project Characters box either side of the main window
Chase Ext Time-code	⌘J	Enables VoiceQ to chase external MTC. Toggles On and Off
Close	⌘W	Closes the current file but does not quit the program.
Copy	⌘C	Copies highlighted sections of text
Cut	⌘X	Cuts highlighted sections of text
Decrease Scroll Speed	⌘[	Decrease the scroll speed
Delete Line	⇧⌘L	Deletes a line
Delete Scene	⌘-	Deletes a scene
Drag all words in line	⌘ drag	Dragging a word in the timeline view will affect all words after the one selected in the current line
Drag following words in line	⇧⌘ drag	Dragging a word in the timeline view will affect all words before and after the one selected in the current line
Drag previous words in line	⇧⇧⌘ drag	Dragging a word in the timeline view will affect all words before the one selected in the current line
External Monitor	F8	Outputs movie to internal or external monitor
Increase Scroll Speed	⌘]	Increase the scroll speed
Locate to Start	return	Locates to the start of the movie
Minimize	⌘M	Minimizes window
New	⌘N	Creates a new VoiceQ Project
Open All Lines	⇧⌘ click	Opens and closes All Lines when Scene is highlighted, including all languages

Open...	⌘O	Opens an existing VoiceQ Project . Also used to imports a text file into VoiceQ.
Paste	⌘V	Inserts cut or copied sections of text
Play QuickTime Audio	⇧⌘M	Play QuickTime audio. Toggles On and Off
Play with Pre-roll	^space bar	Plays selected line with a pre-roll value set in preferences
Play/Stop	space bar	Plays and stops movie
Preferences	⌘,	Opens VoiceQ Preferences Window
Preview Line	F1	Displays a static preview of the highlighted line onto the display. Toggles On and Off
Project Settings	⌘9	Opens Project Settings window
Quickspot line end	period (.)	Spots the end of a highlighted line to the timeline
Quickspot line start	comma (,)	Spots the start of a highlighted line to the timeline
Redo	⇧⌘Z	Redo previous actions
Rewind 1 frame	⌘-	Backward 1 frame
Rewind 1 second	⌘-	Backward 1 second
Rewind 10 seconds	⇧⌘-	Backward 10 seconds
Save	⌘S	Saves the current file
Save As ...	⇧⌘S	Saves a copy of the current file with a new name
Scrolling Ruler	F3	Outputs feet and half feet Ruler onto the display. Toggles On and Off
Scrolling Text	F5	Toggles the text On and Off on the display
Scrolling Waveform	F4	Toggles the scrolling waveform On and Off on the display
Select next line	forward slash (/)	Selects next line for spotting
Select previous line	m	Selects previous line for spotting
Special Characters	⌘T	Displays the Special Character Palette
Streamers	F7	Toggles the streamers On and Off on the display
Timecode	F2	Outputs VoiceQ timecode onto the display. Toggles On and Off
Undo	⌘Z	Undo previous actions

## Support

For all enquiries and technical support contact:

### North America Head Office:

#### KIWA International Ltd

Telephone: 1 800 371 2792

Email General Enquiries: [info@voiceq.com](mailto:info@voiceq.com)  
Email Technical Support: [support@voiceq.com](mailto:support@voiceq.com)  
Website: [voiceq.com](http://voiceq.com)

### New Zealand and Australasia Head Office:

#### KIWA International Ltd

PO Box 41136  
St Lukes  
Auckland  
New Zealand

Telephone: +64 9 375 2865  
Fax: +64 9 375 2867

Email General Enquiries: [info@voiceq.com](mailto:info@voiceq.com)  
Email Technical Support: [support@voiceq.com](mailto:support@voiceq.com)  
Website: [voiceq.com](http://voiceq.com)



KEEPING SOUND ON TRACK  
KEEPING SOUND ON TRACK



BREAKING SOUND BARRIERS  
BREAKING SOUND BARRIERS