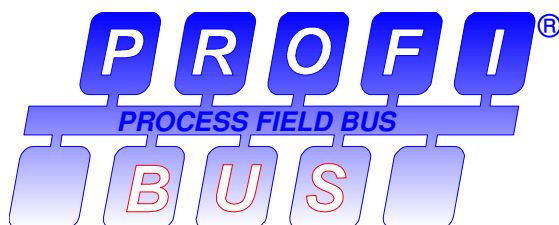
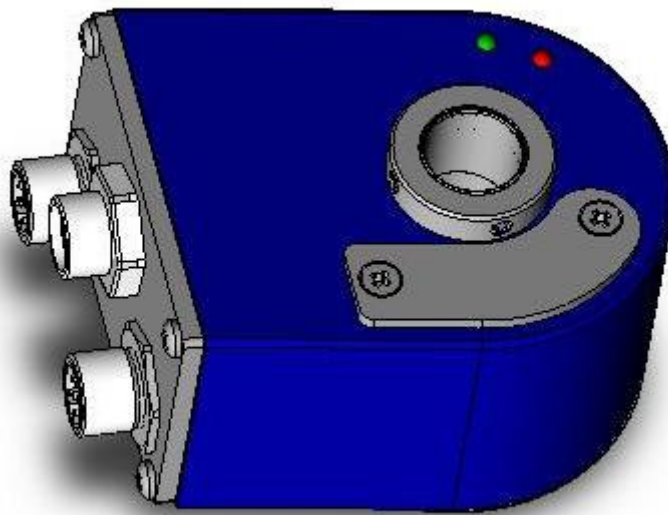


## PROFIBUS USER MANUAL

---



**Absolute Rotary Encoder  
with Profibus-DP-Interface**

**POSI+**

**User Manual**

**PROFIBUS USER MANUAL**

<b>1 General</b> .....	<b>4</b>	5.1.6 Software-limit switch.....	19
1.1 Absolute Rotary Encoder.....	4	5.1.7 Physical impulses .....	20
1.2 Profibus technology .....	4	5.1.8 Encoder type .....	21
<b>2 Installation</b> .....	<b>5</b>	5.1.9 Velocity time base .....	21
2.1 Settings in the connection cap.....	5	5.2 Data exchange in normal operation .....	22
2.1.1 Station address.....	5	5.3 Commissioning mode .....	23
2.1.2 Bus termination.....	5	5.3.1 Setting the counting direction .....	23
2.2 Connecting bus lines and power supply ..	6	5.3.2 Teach-In Start.....	24
2.3 Connecting the screen.....	7	5.3.3 Teach-In Stop.....	24
2.4 Instructions for mechanical installation and electrical connection of the angular encoder.....	7	5.3.4 Preset value .....	25
<b>3 Device Configuration</b> .....	<b>8</b>	<b>6 Diagnostic messages</b> .....	<b>26</b>
3.1 Overview – Configuration principle.....	8	6.1 Overview .....	26
3.2 Overview encoder configurations - functionality .....	9	6.2 Supported diagnostic messages.....	27
3.3 Encoder configurations - data format ....	10	6.2.1 Extended diagnostics header.....	27
<b>4 Class 1 and Class 2 profile</b> .....	<b>11</b>	6.2.2 Operating status.....	27
4.1 Parameter settings .....	11	6.2.3 Encoder type .....	27
4.1.1 Code sequence.....	12	6.2.4 Singleturn resolution .....	27
4.1.2 Class 2 functionality .....	12	6.2.5 Number of revolutions.....	27
4.1.3 Commissioning diagnostics.....	12	6.2.6 Profile version .....	27
4.1.4 Scaling function .....	12	6.2.7 Software version .....	27
4.1.5 Measuring units per revolution.....	12	6.2.8 Operating time .....	27
4.1.6 Total measuring range.....	13	6.2.9 Zero offset.....	27
4.2 Data exchange in normal operation .....	14	6.2.10 Programmed resolution .....	27
4.2.1 Transferring the process value .....	14	6.2.11 Programmed total resolution .....	27
4.2.2 Preset function.....	14	6.2.12 Serial number .....	27
<b>5 Special versions BEI IDEACOD 2.2</b> .....	<b>16</b>	6.3 Status indication by the LEDs .....	29
5.1 Parameter .....	17	<b>7 Configuring with STEP 7</b> .....	<b>30</b>
5.1.1 Activate manufacturer-specific parameters .....	17	7.1 Installing the GSD file .....	30
5.1.2 Desired measuring units.....	17	7.2 Configuring the encoder .....	31
5.1.3 Desired Measuring units reference....	18	7.3 Selecting the encoder version .....	32
5.1.4 Activate commissioning mode.....	19	7.4 Setting the parameters .....	33
5.1.5 Shorter Diagnostics.....	19	<b>8 Technical Data</b> .....	<b>35</b>
		<b>9 Appendix</b> .....	<b>35</b>
		9.1 FAQ absolute encoder Profibus .....	35
		9.2 Definitions .....	37
		<b>10 Index</b> .....	<b>39</b>

## PROFIBUS USER MANUAL

---

**Specifications are subject to change without notice**

Technical specifications, which are described in this manual, are subject to change due to our permanent strive to improve our products.

Publication: May 2009  
Version: Preliminary

## PROFIBUS USER MANUAL

---

### 1 General

This manual describes installation and configuration of the Absolute Rotary Encoder with Profibus DP interface. The device meets

the requirements of a Profibus Slave according to the PROFIBUS standard. It is certified by the "Profibus Nutzerorganisation" in Germany.

#### 1.1 Absolute Rotary Encoder

Basic principle of the absolute measurement is the optical scanning of a transparent disk with code print. The code disk is connected to the shaft that is to be measured. By evaluating the code and two additional incremental signals the absolute position of the shaft can be determined with a resolution of up to 8192

steps (13 bits) or 65536 steps per revolution (16 bits).

The absolute shaft position over up to 65536 revolutions (16 bits).

The position value is calculated in an integrated microprocessor and transmitted over the Profibus.

#### 1.2 Profibus technology

PROFIBUS is an international, open, non-proprietary fieldbus standard which is defined in the international standards IEC 61158. There are three different versions: Profibus DP, Profibus-FMS and Profibus-PA. BEI IDEACOD absolute encoders are designed for the DP version V0. They support all usual baud rates up to 12 MBaud.

Besides manufacturer-specific functions, the devices support the classes 1 and 2 according to the Profile for Absolute Encoders (this device profile can be ordered under part number 3.062 from the "Profibus Nutzerorganisation"). Further information about profibus (functionality, manufacturer, products), standards and device profiles are available from the PNO:

Profibus Nutzerorganisation (PNO)  
Haid-und-Neu-Straße 7  
D-76131 Karlsruhe  
Tel.: ++49 (0) 721 / 96 58 590  
Fax: ++49 (0) 721 / 96 58 589  
[www.profibus.com](http://www.profibus.com)

## PROFIBUS USER MANUAL

### 2 Installation

The Absolute Encoder is connected with 3 M12 connectors..

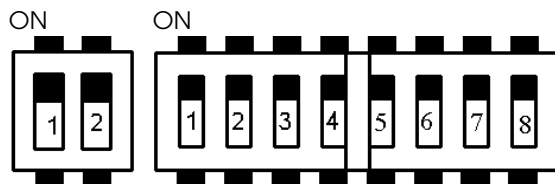
#### 2.1 Settings in the connection cap

##### 2.1.1 Station address

The station (node) address is set by using the 8 DIP switches .The DIP n°8 is not used. Possible addresses are between 0 and 126. Each address can only be used once in the network. The station address is read in when

switching on the power supply. An address change by the Master ("Set\_Slave\_Add") is not supported by the version with DIP switches. The address is coded with binary format: OFF=0 ON=1, DIP8=OFF

Address	Dip 1	Dip 2	Dip 3	Dip 4	Dip 5	Dip 6	Dip 7	Dip 8
0	OFF	OFF	OFF	OFF	OFF	OFF	OFF	OFF
1	ON	OFF	OFF	OFF	OFF	OFF	OFF	OFF
2	OFF	ON	OFF	OFF	OFF	OFF	OFF	OFF
3	ON	ON	OFF	OFF	OFF	OFF	OFF	OFF
...								
124	OFF	OFF	ON	ON	ON	ON	ON	OFF
125	ON	OFF	ON	ON	ON	ON	ON	OFF



Bus termination

Address

##### 2.1.2 Bus termination

If the encoder is connected at the end or beginning of the bus line the termination resistor must be switched on with DIP switches n°1 et n°2.

##### Note

If the encoder must be changed during operation, a separate active bus termination should be used.

## PROFIBUS USER MANUAL

---

### 2.2 Connecting bus lines and power supply

Pin assignment of the B coded 5 pin male M12 connector on the device side:

Pin no.	Signal
1	not connected
2	RxD/TxD-N / A-line (green)
3	not connected
4	RxD/TxD-P / B-line (red)
5	not connected
Thread	Shield

Pin assignment of the B coded 5 pin female M12 connector on the device side:

Pin no.	Signal
1	Power supply plus. (P5V)
2	RxD/TxD-N / A-line (green)
3	Data ground (reference potential to VP)
4	RxD/TxD-P / B-line (red)
5	not connected
Thread	Shield

Power supply plus (5V) and Data ground are insulated from the supply voltage. Using power supply (P5V) and Data ground with an external termination line.

Pinning for A coded 4 pin male M12 Power supply connector,

Pin	Function
1	Supply voltage + (P24)
2	NC
3	Supply voltage - (M24)
4	NC

Power supply voltage between +5V DC and +30V DC

## PROFIBUS USER MANUAL

---

### 2.3 Connecting the screen

To achieve the highest possible noise immunity shielded cables should be used for data transmission. The shield should be connected to ground on both ends of the cable. In

certain cases, a compensation current might flow over the shield. Therefore a potential compensation cable is recommended.

### 2.4 Instructions for mechanical installation and electrical connection of the angular encoder

The following points should be observed:

- Do not drop the angular encoder or subject it to excessive vibration. The encoder is a precision device.
- Do not open the angular encoder housing (this does not mean that you cannot remove the connection cap). If the device is opened and closed again, it can be damaged and dirt may enter the unit.
- The angular encoder shaft must be connected to the shaft to be measured through a suitable coupling (full shaft version). This coupling is used to dampen vibrations and imbalance on the encoder shaft and to avoid inadmissible high forces. Suitable couplings are available from BEI IDEACOD.
- Although BEI IDEACOD absolute encoders are rugged, when used in tough ambient conditions, they should be protected against damage using suitable protective measures. The encoder should not be used as handles or steps.
- Only qualified personnel may commission and operate these devices. These are personnel who are authorized to commission, ground and tag devices, systems and circuits according to the current state of safety technology.
- It is not permissible to make any electrical changes to the encoder.
- Route the connecting cable to the angular encoder at a considerable distance or completely separated from power cables with their associated noise. Completely shielded cables must be used for reliable data transfer and good grounding must be provided.
- Cabling, establishing and interrupting electrical connections may only be carried-out when the equipment is in a no-voltage condition. Short-circuits, voltage spikes etc. can result in erroneous functions and uncontrolled statuses which can even include severe personnel injury and material damage.
- Before powering-up the system, check all of the electrical connections. Connections, which are not correct, can cause the system to function incorrectly. Fault connections can result in severe personnel injury and material damage.

## PROFIBUS USER MANUAL

### 3 Device Configuration

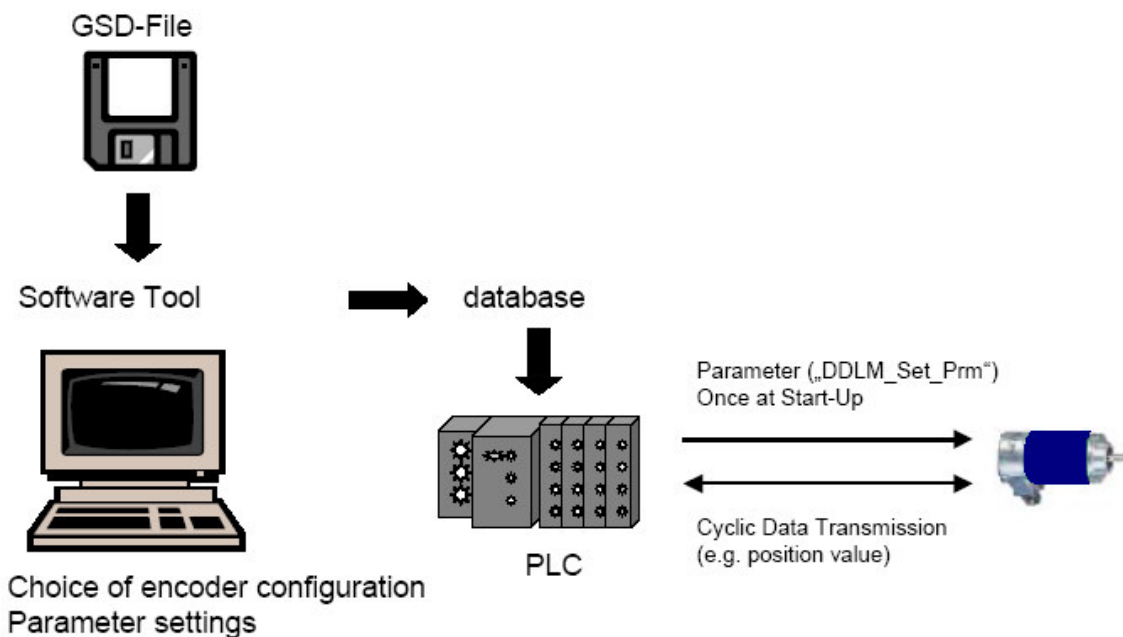
The Absolute Encoder with Profibus-Interface can be programmed according to the needs of the user. The GSD-file has to be installed in the used software tool. The user has the possibility to choose different encoder configurations. Parameters and functionality depend on the selected encoder configuration. BEI IDEACOD-Absolute Encoders support all configurations described in the following, i.e. there is no functionality limitation due to the hardware. Additionally to the configurations „Class 1“ and „Class 2“ (according to the Profile for Encoders) the BEI IDEACOD Encoder offers configurations with manufacturer-specific functions.

By choosing a certain encoder configuration parameter and configuration data are

determined. These data are stored in the profibus master. They are transmitted to the slave (encoder) when the profibus network is starting up („DDL\_M\_Set\_Prm“). It is not possible to change parameters or configuration during the normal operation of the device (exception: „Commissioning Mode“, see chapter 5.3).

After receiving configuration and parameter data the absolute encoder enters the normal operating mode (cyclic data transmission – „DDL\_M\_Data\_Exchange“). In this mode the process values (e.g. the position value) are transmitted. Data length and format are determined by the user when selecting a certain encoder configuration.

#### 3.1 Overview – Configuration principle





## PROFIBUS USER MANUAL

### 3.2 Overview encoder configurations - functionality

Designation	Cyclic communication	Programmable parameters	Additional functions
Class 1 Singleturn	Position value -16 bit Input	Code sequence	-
Class 1 Multiturn	Position value - 32 bit Input	Code sequence	-
Class 2 Singleturn	Position value -16 bit Input Preset value - 16 bit Output	Code sequence Scaling factor	Preset function
Class 2 Multiturn	Position value - - 32 bit Input Preset value - 32 bit Output	Code sequence Scaling factor	Preset function
BEI IDEACOD 2.2 Singleturn	Position value (32 bit Input)  Preset value / Teach-In (32 bit Output)  Velocity (16 bit Input)	- Code sequence - Scaling factor - Shorter - Diagnostics - Limit switches - Velocity time base	Preset function Commissioning mode Velocity Output
BEI IDEACOD 2.2 Multiturn	Position value (32 bit Input)  Preset value / Teach-In (32 bit Output)  Velocity (16 bit Input)	- Code sequence - Scaling factor - Shorter - Diagnostics - Limit switches - Velocity time base	Preset function Commissioning mode Velocity Output

## PROFIBUS USER MANUAL

### 3.3 Encoder configurations - data format

Designation	Configuration		Input words (Encoder -> Master)	Output words (Master -> Encoder)	Description	
	Hex	Dec.			Chapter	Page
Class 1 Singleturn (According to Profile)	D0	208	1	0	4	11
Class 1 Multiturn (According to Profile)	D1	209	2	0		
Class 2 Singleturn (According to Profile)	F0	240	1	1		
Class 2 Multiturn (According to Profile)	F1	241	2	2		
BEI IDEACOD 2.2 Singleturn	F1 D0	241 208	2 1	2	5	16
BEI IDEACOD 2.2 Multiturn	F1 D0	241 208	2 1	2		

## PROFIBUS USER MANUAL

### 4 Class 1 and Class 2 profile

The encoder versions Class 1 and Class 2 are defined by the working group encoder in the „Profibus Nutzerorganisation“ in the “Profile for

Encoders” (available from the PNO, Order No. 3.062).

#### 4.1 Parameter settings

The following table contains an overview of the parameters according to the Profile for Encoders and the structure of the parameter telegram. (Usually it is not necessary for the

user to know the details of the structure – the parameters are set in user-friendly forms in the operator software tool.)

Octet (= byte) No.	Parameter	Bit Nr.	Details
1 ... 8	Profibus Standard Parameters		
9	Code sequence	0	
	Class 2 functionality	1	Section 4.1.2, Page 12
	Commissioning Diagnostics	2	Section 4.1.3, Page 12
	Scaling function	3	Section 4.1.4, Page 12
	Reserved	4	
	Reserved	5	
	Not used for Class 1 and Class 2	6 7	
10 ... 13	Measuring units per revolution		Section 4.1.5, Page 12
14 ... 17	Total measuring range		Section 4.1.6, Page 13
18 ... 25	Reserved (Profile)		
26 ...	Not used for Class 1 and Class 2 (Refer to versions BEI IDEACOD 2.2)		

## PROFIBUS USER MANUAL

### 4.1.1 Code sequence

The parameter „code sequence“ defines the counting direction of the position value. The code increases when the shaft is rotating

clockwise (CW) or counter-clockwise (CCW) (view onto the shaft). The code sequence is defined in bit 0 of octet 9:

Octet 9 Bit 0	Direction of rotation when viewing the shaft	Code
0	Clockwise (CW)	Increasing
1	Counter-clockwise (CCW)	Increasing

In Class 1 this is the only parameter that can be set.

### 4.1.2 Class 2 functionality

Using this switch Class 2 encoders can be restricted to the functionality of Class 1, i.e. the scaling parameters are disabled. To use the class 2 functionalities bit 1 in octet 9 has to be set.

Octet 9 Bit 1	Class 2 functionality
0	Switched off
1	Switched on

### 4.1.3 Commissioning diagnostics

This function has no significance for the BEI IDEACOD encoder.

### 4.1.4 Scaling function

The parameter „scaling function“ enables the scaling parameters „resolution per revolution“ and „total resolution“. This switch should always be activated if functions of class 2 (or even higher classes BEI IDEACOD 2.1 and BEI IDEACOD 2.2) are to be used.

Octet 9 Bit 3	Scaling function
0	Switched off
1	Switched on

### 4.1.5 Measuring units per revolution

The parameter „measuring units per revolution“ is used to program a desired number of steps over one revolution. If the value exceeds the basic (physical) resolution of the encoder, the output code is no longer in single steps. Starting with generation “B1“

the encoder indicates a parameter error (LED) and it will not enter the data exchange mode. With high resolution encoders it may be necessary to divide the value into high and low word (depending on the software tool), refer to page 34.

Octet	10	11	12	13
Bit	31 - 24	23 - 16	15 - 8	7 - 0
Data	$2^{31}$ to $2^{24}$	$2^{23}$ to $2^{16}$	$2^{15}$ to $2^8$	$2^7$ to $2^0$
Desired measuring units per revolution				

## PROFIBUS USER MANUAL

### 4.1.6 Total measuring range

Octet	14	15	16	17
Bit	31 – 24	23 – 16	15 - 8	7 - 0
Data	2 <sup>31</sup> to 2 <sup>24</sup>	2 <sup>23</sup> to 2 <sup>16</sup>	2 <sup>15</sup> to 2 <sup>8</sup>	2 <sup>7</sup> to 2 <sup>0</sup>
Programmed total measuring range in steps				

The parameter „total measuring range“ is used to adapt the measuring range of the encoder to the real measuring range of the application. The encoder counts up until the position value has reached the programmed total resolution and starts with 0 again.

Example: 100 steps are programmed for each revolution (parameter „measuring units per revolution“) and the total resolution is set to

12800. Then the encoder counts up to 11799, starts with “0” again after 128 revolutions, counts up to 11799, and so on.

Note: With many software tools it is necessary to divide the value into high and low word, refer to page 34.

When choosing the total resolution the following rule has to be observed:

If “steps per revolution“ are set to “n” the parameter total resolution must not cause periods longer than the maximum (physical) number of revolutions (see type label), i.e. that the programmed total resolution of a 65536 revolutions multiturn encoder must be less than 32768 x the programmed number of steps per revolution (the programmed total resolution of a 32768 revolution multiturn encoder must be less than 32768 x the programmed number of steps per revolution):

The following rules must be applied:

**1) Total resolution < 2 147 483 648**

**2) Total resolution <= measuring units per revolution x 32768 or**

**Total resolution = measuring units per revolution x 65536**

If these rules are disregarded the encoder will indicate a parameter error and it will not enter the data exchange mode.

## PROFIBUS USER MANUAL

### 4.2 Data exchange in normal operation

The „DDLML\_Data\_Exchange mode“ is the normal operation mode of the device. On request the encoder transfers the current

(position) value to the master. The encoder can also receive data from the master (e.g. the preset value in the class 2 configuration).

#### 4.2.1 Transferring the process value

The multiturn encoder transmits the current position value as a 32-bit-value (double word) to the master.

Word	Word 1																Word 0															
Function	Process value																															
Bit	31	30	29	28	27	26	25	24	23	22	21	20	19	18	17	16	15	14	13	12	11	10	9	8	7	6	5	4	3	2	1	0
	0	0	X	X	X	X	X	X	X	X	X	X	X	X	X	X	X	X	X	X	X	X	X	X	X	X	X	X	X	X	X	X

The singleturn encoder uses a 16-bit-value (word) for data transmission.

#### 4.2.2 Preset function

Using the preset function it is possible to adapt the encoder zero point to the zero point of the application. When using this function the current encoder position value is set to the desired preset value. The integrated microcontroller calculates the internal zero point shift.

The preset value is activated if bit 31 in the (peripheral) output double word is set to 1 (rising edge). As the preset function is used after receiving the scaling parameters the preset value refers to the scaled position value.

## PROFIBUS USER MANUAL

	Bit	Data bits																															
		31	30	29	28	27	26	25	24	23	22	21	20	19	18	17	16	15	14	13	12	11	10	9	8	7	6	5	4	3	2	1	0
Master → slave	1	0	Transfer of the required position value (= preset value)																														
Slave → slaver	0	0	New = required position value is transferred																														
Master → slave	0	0	Reset bit 31 – normal mode																														
Slave → Master	0	0	New = required position value is transferred																														

If high precision is required the preset function should only be executed if the encoder shaft is not moving. If the shaft moves quickly during

the preset procedure, this can result in offsets (because of bus delay times).

### Note for Singleturn devices

The procedure is similar with the singleturn-version: Here Bit 15 is used to activate the preset value. With high resolution singleturn encoders (16 Bit) it is not possible to set preset values > 32767 (15 bit), as the MSB is used to

activate the preset. If this functionality is needed the user has to choose one of the manufacturer specific BEI IDEACOD-encoder versions (in these classes the singleturn position is transmitted as 32-bit-value).

## PROFIBUS USER MANUAL

### 5 Special versions BEI IDEACOD 2.2

The manufacturer-specific encoder configurations BEI IDEACOD 2.2 offer (in addition to the functions according to the Profile for Encoders) features such as commissioning mode, velocity output and software limit switches.

The following table gives an overview of the used parameters and the structure of the parameter telegram.

Usually it is not necessary to know these details as the parameters are set with user-friendly software tools.

Octet (byte)	Parameter	Bit No.	Details	
			Section	Page
1 .. 8	Profibus Standard Parameters			
9	Code sequence	0	4.1.1	12
	Class 2 functionality	1	4.1.2	12
	Commissioning Diagnostics	2	4.1.3	12
	Scaling function	3	4.1.4	12
	Reserved	4		
	Reserved	5		
	Activate manufacturer-specific parameters (octet 26)	6	5.1.1	17
	Reserved	7		
10 .. 13	Desired measuring units (refer to: octet 26 bit 0 and 1)		5.1.2	17
14 .. 17	Total measuring range		4.1.6	13
18 .. 25	Reserved			
26	Reference for the desired measuring steps	0	5.1.3	18
		1		
	Activate commissioning mode	2	5.1.4	19
	Shorter Diagnostics	3	5.1.5	19
	Reserved	4		
	Activate lower limit-switch	5	5.1.6	19
	Activate upper limit-switch	6	5.1.6	19
Activate octets 27-39	7	5.1.1	17	
27 .. 30	Lower limit switch		5.1.6	19
31 .. 34	Upper limit switch		5.1.6	19
35 .. 38	Physical impulses		5.1.7	20
39	Reserved	0		
	Encoder type (Single-/Multiturn)	1	5.1.8	21
	Reserved	2		
	Reserved	3		
	Time base velocity	4	5.1.9	21
		5		
	Reserved	6		
Reserved	7			



## PROFIBUS USER MANUAL

### 5.1 Parameter

In the following the manufacturer specific parameters are described in detail. The parameters according to the Profile for

Encoders are supported too, description: see chapter 4.

#### 5.1.1 Activate manufacturer-specific parameters

The manufacturer-specific parameter byte 26 is activated with bit 6 in octet 9.

Bit 7 in octet 26 activates further parameter bytes (27-39).

Usually this happens automatically if the encoder versions BEI IDEACOD 2.2 are selected. It is only important for the user to observe this if the parameters are entered "manually" (directly using hex-code).

Octet 9 Bit 6	Octet 26
0	Deactivated
1	Activated

Octet 26 Bit 7	Octet 27 – 39
0	Deactivated
1	Activated

#### 5.1.2 Desired measuring units

The parameter „desired measuring units“ is used to program any required number of steps

over 1 revolution, over the whole measuring range or over a part of the measuring range.

Octet	10	11	12	13
Bit	31 - 24	23 - 16	15 - 8	7 - 0
Data	$2^{31}$ to $2^{24}$	$2^{23}$ to $2^{16}$	$2^{15}$ to $2^8$	$2^7$ to $2^0$
	Desired measuring units			

The reference for the desired measuring units is specified with the parameter „Desired measuring units reference“ (cp. 5.1.3). If “per revolution” is selected the measuring range can be adapted with the parameter “total

measuring range”. Please observe the rules in section 4.1.6.

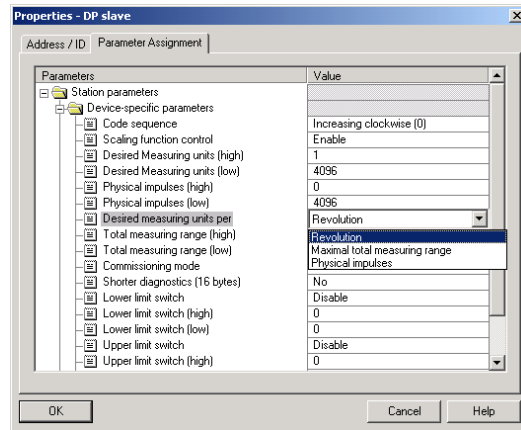
Note: With many software tools it is necessary to divide the value into high and low word, refer to page 34.

## PROFIBUS USER MANUAL

### 5.1.3 Desired Measuring units reference

With this parameter the reference for the desired measuring units (cp. 5.1.2) is determined, either

- per revolution
- per maximum total resolution
- per number of physical impulses



#### Desired measuring units per **revolution**

In this case the position value increases by the programmed number of steps (desired measuring units) over one revolution.

Additionally the parameter "total resolution" is used to achieve an adaptation of the measuring range (cp. 4.1.6).

#### Desired measuring units per **maximum total measuring range**

The parameter „desired measuring units" refers to the complete measuring range of the encoder, i.e. the encoder gives out the

programmed number of measuring units over the whole measuring range (4096 revolutions with the multiturn encoder).

#### Desired measuring units per **physical impulses**

The desired measuring units refer to the physical impulses entered in octets 35-39 (cp.5.1.7). Physical impulses means: The real value that is read internally from the code disc (e.g. 4096 steps per revolution with a standard 12-bit-encoder).

With that option it is possible to set gearing factors freely.

Reference	Octet 26 Bit 0	Octet 26 Bit 1
Per revolution	0	0
Per maximum total measuring range	1	0
Per physical impulses (= steps specified in octets 35-38)	0	1

## PROFIBUS USER MANUAL

### 5.1.4 Activate commissioning mode

Bit 2 in octet 26 activates the commissioning mode. This is a special mode with the option to set further parameters in the data-exchange –mode (additional to the preset value). In the commissioning mode a „Teach-In“ can be carried out, i.e. the gearing factor can be determined directly in the machine. In this special mode (indicated by the flashing green LED) the parameters set in the system configuration are ignored by the encoder. It uses parameters stored in an internal EEPROM instead.

The commissioning mode can be used durably, but it is recommended to transfer the parameters determined with the Teach-In into the system configuration. Then the encoder should be used in “normal” operation mode – so it is possible to exchange the device without a new Teach-In.

A detailed description of the commissioning mode can be found in section 5.3.

Octet 26 Bit 2	Commissioning mode
0	Switched off
1	Switched on

### 5.1.5 Shorter Diagnostics

Some Profibus masters, especially older ones, have problems with the full diagnostic data length (57 bytes). The BEI IDEACOD encoder offers the option to reduce the diagnostic data length to 16 bytes. If Class 1 is used the standard diagnostic data length is 16 bytes.

Octet 26 Bit 3	Diagnostics
0	Standard = 57 bytes
1	Reduced = 16 bytes

### 5.1.6 Software-limit switch

Two positions can be programmed. If the position value falls below the lower limit switch or exceeds the higher limit switch, bit 27 in the 32-Bit-process-value is set to 1. Between these limit switches bit 27 is set to 0. The limit switches can be set to any value, but the parameter “total measuring range” must not be

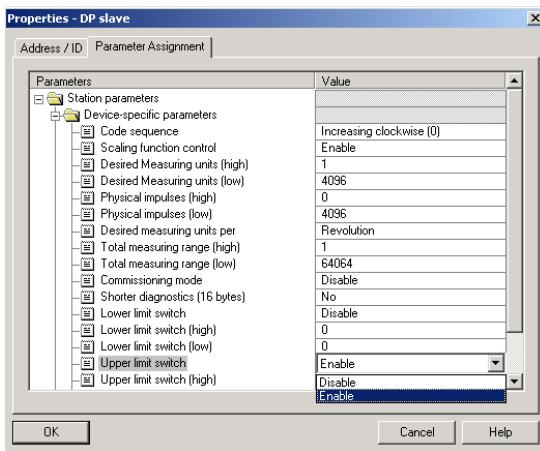
exceeded. The limit switches are activated with bits 5 and 6 in octet 26.

Note: With many software tools it is necessary to divide the values into high and low word, refer to page 34.

Octet	27	28	29	30
Bit	31 - 24	23 - 16	15 - 8	7 - 0
Data	$2^{31}$ to $2^{24}$	$2^{23}$ to $2^{16}$	$2^{15}$ to $2^8$	$2^7$ to $2^0$
	Lower limit switch (in measuring steps, related to the scaled value)			

## PROFIBUS USER MANUAL

Octet	31	32	33	34
Bit	31 - 24	23 - 16	15 - 8	7 - 0
Data	$2^{31}$ to $2^{24}$	$2^{23}$ to $2^{16}$	$2^{15}$ to $2^8$	$2^7$ to $2^0$
	Upper limit switch (in measuring steps, related to the scaled value)			



Octet 26 Bit 5	Lower limit switch
0	Deactivated
1	Activated

Octet 26 Bit 6	Upper limit switch
0	Deactivated
1	Activated

### 5.1.7 Physical impulses

Octet	35	36	37	38
Bit	31 - 24	23 - 16	15 - 8	7 - 0
Data	$2^{31}$ to $2^{24}$	$2^{23}$ to $2^{16}$	$2^{15}$ to $2^8$	$2^7$ to $2^0$
	Physical impulses			

This parameter is evaluated if the reference for the „desired measuring units” is „physical impulses” (cp. 5.1.3).

With the „physical impulses” it is possible to set a gearing factor freely. The user defines the output steps („desired measuring steps”) over a part of the measuring range. This option is helpful to program scaling factors that result in a non-integer number of steps over 1 revolution.

Example:

Problem: The position value has to increase by 400 steps over 3 revolutions.

With the reference „steps per revolution” it is impossible to program that scaling factor (it would be necessary to set the parameter „desired measuring steps” to 133.33; this is not possible because the parameter must be an integer value).

Solution:

Choose „physical impulses” as reference for the „desired measuring units”.

Now the number of physical measuring steps over the desired measuring range is determined. For this the actual (physical)

## PROFIBUS USER MANUAL

---

resolution of the encoder (type label) is used. For our example this would be (with a standard encoder, 12 Bit resolution):

4096 steps/revolution x 3 revolutions = 12288 steps

Enter this value (12288) as „physical impulses“ and set the „desired measuring units“ to 400.

Now the encoder increases the position value by 400 steps on a measuring range of 12288 physical steps (3 revolutions).

Note: With many software tools it is necessary to divide the value into high and low word, refer to page 34.

### 5.1.8 Encoder type

The encoder type (Singleturn or Multiturn) is specified in bit 1 octet 39. Generally this bit is set automatically if the encoder version is selected. Not used. The encoder type is set automatically with using parameters resolution

and total range, if total range is equal to resolution, the encoder type is singleturn..

Octet 39 Bit 1	Type
0	Singleturn
1	Multiturn

### 5.1.9 Velocity time base

With this parameter the user can choose the time base for the velocity output (version BEI IDEACOD 2.2). The time base is specified in bits 4 and 5 of octet 39.

Time base	Bit 4	Bit 5
Steps / second	0	0
Steps / 100 ms	1	0
Steps / 10 ms	0	1
RPM (revolutions per minute)	1	1

## PROFIBUS USER MANUAL

### 5.2 Data exchange in normal operation

With the manufacturer-specific versions BEI IDEACOD 2.2 the process value generally is transmitted as 32-bit-value (peripheral double word). Apart from 25 bits used for the position value the 7 other bits are used as status bits. The output double word contains the preset value and control bits.

Absolute encoders model series might have (physical) position values > 25 Bit. The manufacturer specific BEI IDEACOD versions do not support the position values > 25 Bit. The

upper digits will be overwritten by the status bits. If the BEI IDEACOD versions are used with encoders with a total (physical) resolution > 25 Bit, the user has to assure that the position value is scaled to a maximum output value < 33554432. If position values > 25 Bit are necessary class 2 should be used.

If version BEI IDEACOD 2.2 is used the current velocity is transmitted in an additional (peripheral) input word.

ID	F1 hex				D0 hex	
Slave → Master	Status + position value				Velocity	
	Status + 2 <sup>24</sup>	2 <sup>23</sup> - 2 <sup>16</sup>	2 <sup>15</sup> - 2 <sup>8</sup>	2 <sup>7</sup> - 2 <sup>0</sup>	2 <sup>15</sup> - 2 <sup>8</sup>	2 <sup>7</sup> - 2 <sup>0</sup>

Master → slave	Preset value + control bits			
	Control + 2 <sup>24</sup>	2 <sup>23</sup> - 2 <sup>16</sup>	2 <sup>15</sup> - 2 <sup>8</sup>	2 <sup>7</sup> - 2 <sup>0</sup>

Meaning of the different status bits:

Bit 28	Bit 27	Bit 26	Bit 25	Meaning
				<b>Ready</b> 0 = encoder is not ready for operation 1 = encoder is ready for operation
				<b>Mode</b> 0 = commissioning mode 1 = normal mode
				<b>Software limit switch</b> 0 = lower limit switch ≤ current position value ≤ upper limit switch 1 = current position value > upper limit switch or current position value < lower limit switch
				<b>Code sequence</b> 0 = increasing clockwise (view onto the shaft) 1 = increasing counter clockwise (view onto the shaft)

## PROFIBUS USER MANUAL

### 5.3 Commissioning mode

If the commissioning mode is activated in the encoder parameters, the scaling factor can be determined directly in the machine by a „Teach-In“.

The commissioning mode is indicated by the flashing green LED and bit 26 in the input double word (bit 26 set to 0).

If the encoder starts up in commissioning mode the parameters in the system configuration (code sequence, scaling) are ignored. Parameters stored in an internal EEPROM are used instead. If code sequence or scaling factor are modified in commissioning mode, the new values will be stored non-volatile and the encoder works with this new parameters.

The proceeding in commissioning mode is as follows:

- The encoder is installed in the machine / system.

- The commissioning mode is activated (parameter settings, cp. 5.1.4)
- The counting direction is changed (if necessary).
- Machine / system is to be moved to the start position.
- The Teach-In-Start command is transmitted to the encoder.
- Machine / system is to be moved to the stop position.
- With the Teach-In-Stop command the desired number of steps is transferred to the encoder.
- Set the preset value.
- The parameters in the system configuration are set to the values determined with the Teach-In procedure.
- Commissioning mode is deactivated (parameter settings).

#### 5.3.1 Setting the counting direction

If the encoder is operating in commissioning mode, the counting direction (code sequence) can be changed online. The current code sequence is indicated with bit 28

in the 32-bit-process value (0: increasing clockwise / 1: increasing counter clockwise). With bit 28 in the output double word the counting direction can be changed.

	Bit	Status bits								Data bits																							
		31	30	29	28	27	26	25	24	23	22	21	20	19	18	17	16	15	14	13	12	11	10	9	8	7	6	5	4	3	2	1	0
Master slave	→	0	0	0	1	0	0	0	Changing the counting direction by setting bit 28																								
Slave Master	→	0	0	0	0/1	0	0	1	Encoder sends acknowledgement (new counting direction) in bits 0																				and 28				0/1
Master slave	→	0	0	0	0	0	0	0	Changeover is completed by reset bit 28																								
slave Master	→	0	0	0	0/1	X	0	1	Output process value with changed counting direction																								

The counting direction is stored non-volatile in an internal EEPROM.

## PROFIBUS USER MANUAL

### 5.3.2 Teach-In Start

After the machine / system has been moved to the start-position the Teach-In-Start command is transmitted to the encoder. The

device now starts the internal calculation of a new scaling factor.

	Bit	Status bits							Data bits																						
		31	30	29	28	27	26	25	24	23	22	21	20	19	18	17	16	15	14	13	12	11	10	9	8	7	6	5	4	3	2
Master slave	→	0	1	0	0	0	0	0	Start the Teach-In by setting bit 30 to 1																						
Slave → Master		0	1	0	X	X	0	1	Acknowledgement of the encoder by setting bit 30 to 1																						
Master slave	→	0	0	0	0	0	0	0	Reset bit 30																						
Slave Master	→	0	1	0	X	X	0	1	Non-calculated position value is transmitted (gearing factor = 1, no offset)																						

Note: The scaling factor is set to 1; the zero point shift is set to zero.

### 5.3.3 Teach-In Stop

After moving the machine / system to the stop-position the Teach-In-Stop command is send. Together with this command the desired number of steps over the moved measuring range is transmitted. The user has to observe that the physical resolution is not exceeded (e.g. 20000 steps on a quarter of a revolution). Positive and negative directions are taken into account automatically, also the crossing of the physical zero point. Note: The measuring range must not exceed the half physical measuring range of the encoder (i.e. a

maximum of 32767 revolutions for a multiturn device with 65536 revolutions.

After receiving the Teach-In-Stop command the encoder transmits the calculated total resolution. This value should be noted and later (when switching the device to normal mode) entered into the parameter settings.

After this Teach-In procedure the encoder operates with the new gearing factor (which is stored non-volatile in the internal EEPROM).

	Bit	Status bits							Data bits																						
		31	30	29	28	27	26	25	24	23	22	21	20	19	18	17	16	15	14	13	12	11	10	9	8	7	6	5	4	3	2
Master SLAVE	→	0	0	1	0	0	0	0	Number of desired measuring steps (on the traversed measuring range)																						
SLAVE → Master		0	1	1	X	X	0	1	Transfer of the total resolution (should be noted)																						
Master SLAVE	→	0	0	0	0	0	0	0	Reset bit 29																						
SLAVE Master	→	0	0	0	X	X	0	1	Output of the current position value, scaled with the new gearing factor																						



## PROFIBUS USER MANUAL

In order to replace the encoder later without a new Teach-In procedure, the total measuring range determined with the Teach-In should be transferred into the system configuration. For this the „total resolution“ must be entered into the parameter field „desired measuring units“ (cp. 5.1.2) and the reference (cp. 5.1.3) must be set to “maximum

total measuring range“. When setting the parameters it should be observed that the code sequence is correct (the setting of the counting direction in commissioning mode has to be transferred to the system configuration). Subsequently the commissioning mode can be switched off and the encoder can be used in normal mode.

### 5.3.4 Preset value

The preset function is similar to the procedure described in section 4.2.2. There is only one difference: When using the manufacturer-

specific versions BEI IDEACOD 2.2 there is an acknowledgement (bit 31 in the input double word is set to 1):

	Bit	Status bits								Data bits																					
		31	30	29	28	27	26	25	24	23	22	21	20	19	18	17	16	15	14	13	12	11	10	9	8	7	6	5	4	3	2
Master SLAVE	→	1	0	0	0	0	0	0	Transfer of the required position value (= preset value)																						
SLAVE Master	→	1	0	0	0	0	0	0	1	New = required position value is transferred																					
Master SLAVE	→	0	0	0	0	0	0	0	Reset bit 31 – normal mode																						
SLAVE Master	→	0	0	0	0	0	0	0	1	New = required position value is transferred																					

## PROFIBUS USER MANUAL

### 6 Diagnostic messages

#### 6.1 Overview

On request of the master the encoder transmits diagnostic data ("DDL\_M\_Slave\_Diag"). The diagnostic data length is 57 bytes (Exception: shorter diagnostics, cp. 5.1.5). The format of the diagnostic data is according to the Profibus Standard (octets 1-6) respectively according to the Profile for Encoders (starting from octet 7).

Diagnostic function	Data type	Diagnostics - octet number	Class
Station status 1 (ref. to: Profibus Standard)	Octet	1	1
Station status 2 (ref. to: Profibus Standard)	Octet	2	1
Station status 3 (ref. to: Profibus Standard)	Octet	3	1
Diagnostic master address	Octet	4	1
PNO identification number	Octet	5, 6	1
Extended diagnostic header	Octet String	7	1
Alarm messages	Octet String	8	1
Operating status	Octet String	9	1
Encoder type	Octet String	10	1
Resolution per revolution (Hardware)	Unsigned 32	11 - 14	1
Number of revolutions (Hardware)	Unsigned 16	15, 16	1
Additional alarm messages	Octet String	17	2
Supported alarm messages	Octet String	18, 19	2
Warnings	Octet String	20, 21	2
Supported warnings	Octet String	22, 23	2
Profile version	Octet String	24, 25	2
Software version	Octet String	26, 27	2
Operating time	Unsigned 32	28 - 31	2
Zero offset	Unsigned 32	32 - 35	2
Manufacturer-specific: offset value	Unsigned 32	36 - 39	2
Programmed resolution per revolution	Unsigned 32	40 - 43	2
Programmed total resolution	Unsigned 32	44 - 47	2
Serial number	ASCII String	48 - 57	2

## PROFIBUS USER MANUAL

### 6.2 Supported diagnostic messages

In the following the different diagnostic messages are described in detail.

#### 6.2.1 Extended diagnostics header

Byte 7 contains the length of the extended diagnostics (including header itself).

#### 6.2.2 Operating status

Diagnostic byte 9 contains certain parameters (set in the system configuration).

Bit	Definition	0	1
0	Direction of rotation	CW	CCW
1	Class 2 functionality	Off	On
2	Diagnostic routine	Off	On
3	Scaling function	Off	On

#### 6.2.3 Encoder type

Diagnostic byte 10 contains the encoder version (singleturn or multiturn).

Byte 10	Definition
0	Singleturn encoder
1	Multiturn encoder

#### 6.2.4 Singleturn resolution

Diagnostic bytes 11-14 contain the real (physical) resolution per revolution of the encoder.

#### 6.2.5 Number of revolutions

Diagnostic bytes 15 and 16 contain the real (physical) number of revolutions of the encoder. Standard values are 1 for singleturn and 65535 for multiturn devices.

#### 6.2.6 Profile version

Diagnostic bytes 24 and 25 contain the profile version of the encoder.

Byte	24	25
Bit	15 – 8	7 – 0
Data	$2^7 - 2^0$	$2^7 - 2^0$
	Revision No.	Index

#### 6.2.7 Software version

Diagnostic bytes 26 and 27 contain the software version of the encoder.

Octet	26	27
Bit	15 – 8	7 - 0
Data	$2^7$ to $2^0$	$2^7$ to $2^0$
	Revision No.	Index

#### 6.2.8 Operating time

The operating time of the encoder is not supported set to FFFFFFFF hex

#### 6.2.9 Zero offset

The zero offset is output in diagnostic bytes 32 to 35.

#### 6.2.10 Programmed resolution

The programmed resolution per revolution is output in diagnostic bytes 40 to 43. The value is only valid if the scaling factor is based on the parameter „resolution per revolution“ (cp. 5.1.3).

#### 6.2.11 Programmed total resolution

The programmed, respectively calculated total resolution is output in diagnostic bytes 44-47.

#### 6.2.12 Serial number

Diagnostic bytes 48-57 are intended for a serial number.

## PROFIBUS USER MANUAL

---

With the current version the serial number is not saved in the encoder, the bytes contain the default value 2A hex.

## PROFIBUS USER MANUAL

---

### 6.3 Status indication by the LEDs

Two LEDs indicate the status of the encoder in the profibus network.

The red LED is used to display errors, the green one displays the status of the encoder. Both LEDs can have one of three possible conditions: dark, bright and flashing. Five of

the nine possible combinations are used to indicate a special condition.

If there are any problems with starting-up the system, the state of the LEDs can give important information about the error cause.

No.	Red LED	Green LED	Status / possible cause
1	Dark	Dark	No power supply.
2	Bright	Bright	Encoder is ready for operation but it has not received any configuration data after power on. Possible causes: address setting incorrect, Bus lines not connected correctly.
3	Flashing	Bright	Parameter or configuration error. The encoder receives configuration or parameter data with incorrect length or inconsistent data. Possible cause: parameter value "total measuring range" too high
4	Dark	Bright	Normal operation in data exchange mode
5	Dark	Flashing	Commissioning mode

## PROFIBUS USER MANUAL

### 7 Configuring with STEP 7

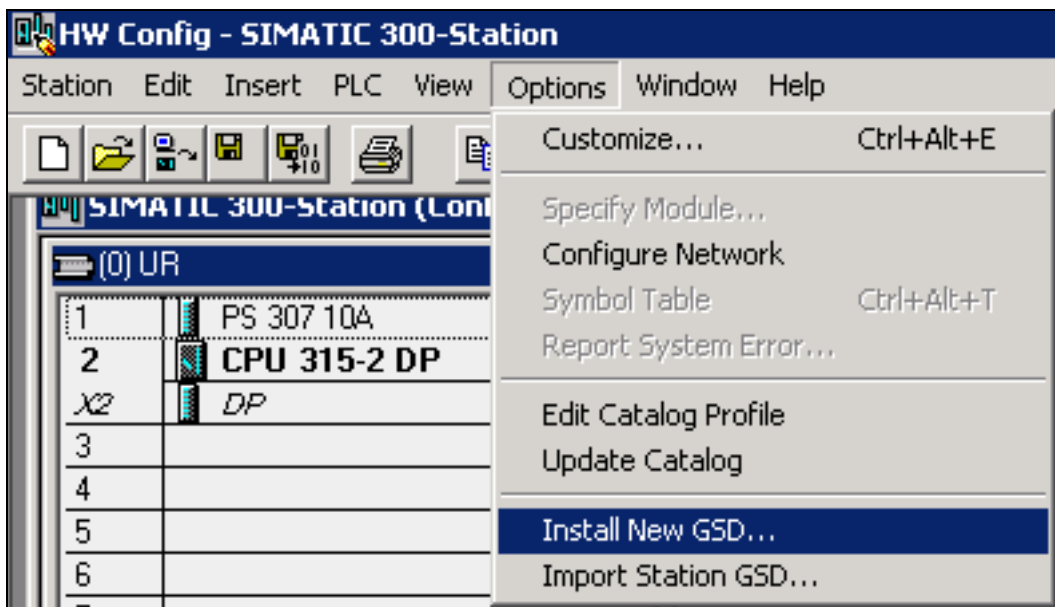
In the following the configuration of the BEI IDEACOD encoder with the configuration tool STEP 7 is shown exemplarily. In this example STEP 7 Version 5.1 and the CPU 315-2DP

(profibus-master integrated) are used. If there are questions about other software tools please contact the manufacturer.

#### 7.1 Installing the GSD file

If BEI IDEACOD encoders are used for the first time it is necessary to install the GSD file („POS10C22.gsd“) to take over the encoder into the hardware catalogue of the tool:

Choose "Install New GSD" in the "HW Config"-window of the project (menu item "Options") and select the GSD-file ("POS10C22.gsd"). The GSD file is available from BEI IDEACOD, it can be downloaded from our homepage [www.bei-ideacod.com](http://www.bei-ideacod.com).

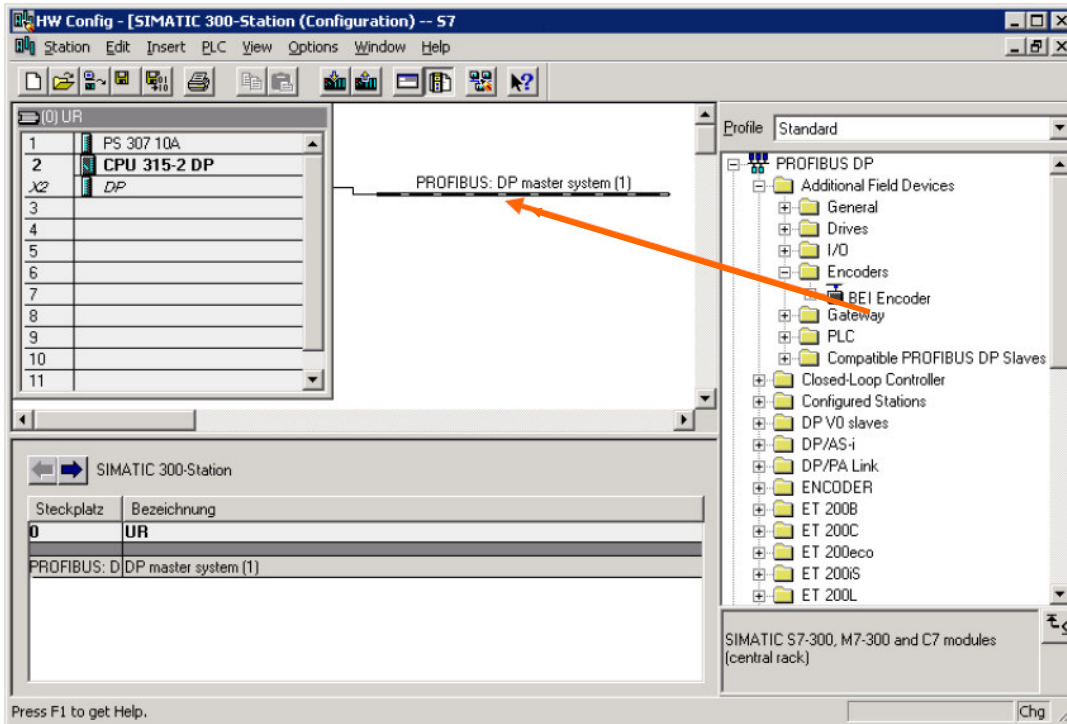


After the successful installation of the GSD file the BEI IDEACOD encoder can be found in the hardware catalogue under „PROFIBUS-DP“ – „Additional Field Devices“ – „Encoders“ – „ POSI+ “.

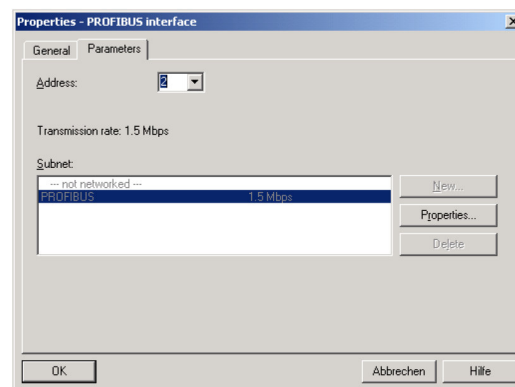
In order to represent the encoder with a bitmap in STEP7 the bitmap file „POSI.bmp“ has to be installed. The procedure is the same as with the GSD file.

## PROFIBUS USER MANUAL

### 7.2 Configuring the encoder



After inserting the Profibus master system in the hardware configuration ("Insert" - "Master System") the BEI IDEACOD encoder can be chosen from the hardware catalogue and added to the profibus network: Select the device "POS1+" and drag it with the mouse to the network (or choose the network and double click the "BEI IDEACOD encoder"). Now the slave address has to be entered (has to be equal to the address setting in the connection cap).

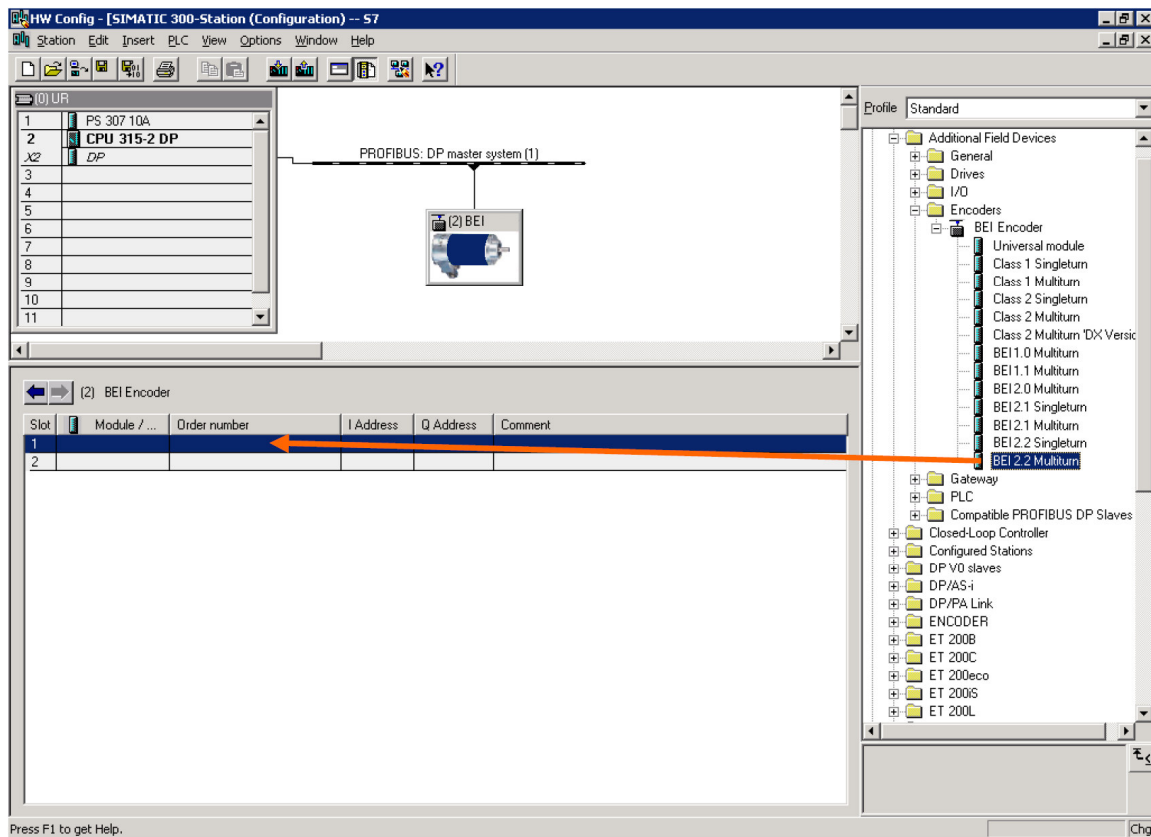


## PROFIBUS USER MANUAL

### 7.3 Selecting the encoder version

As described in chapter 3 the functionality of the encoder depends on the selected encoder version. After the "POSI+" encoder has been added to the network the desired

encoder version can be selected. For this, one of the modules listed under POSI+ encoder has to be dragged to Slot 1 in the displayed configuration table of the encoder.

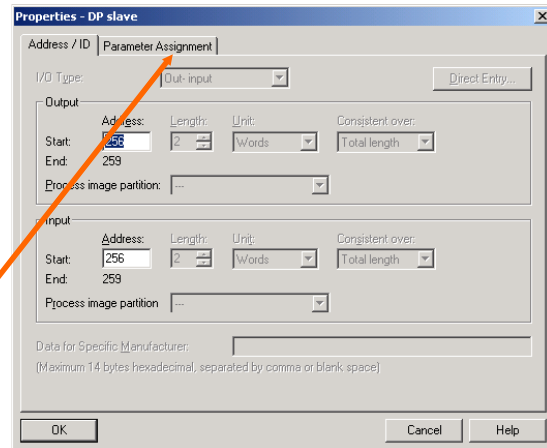




## PROFIBUS USER MANUAL

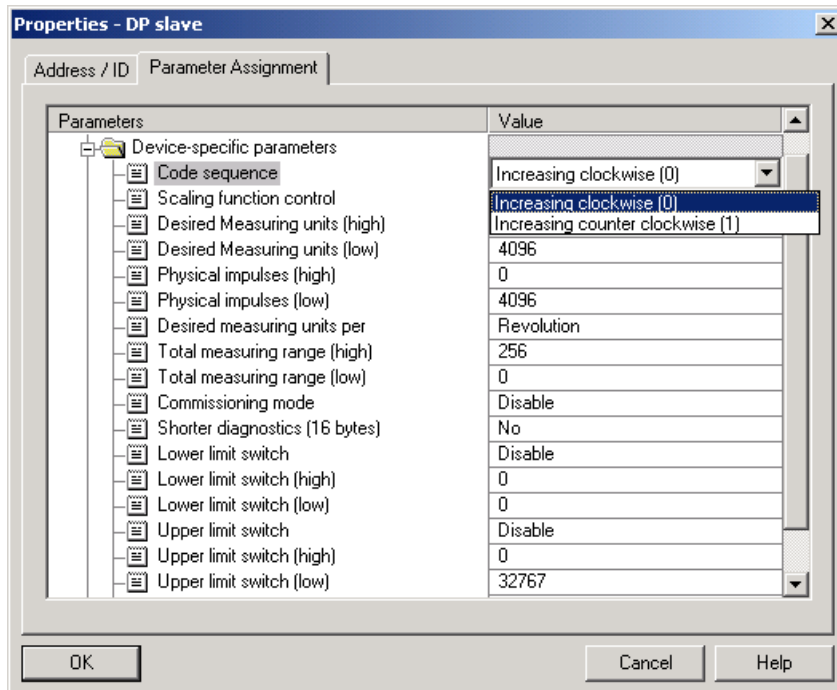
### 7.4 Setting the parameters

Select the encoder in the hardware configuration and double click slot one in the configuration table of the encoder. The dialog „Properties – DP slave“ appears. The input and output addresses can be changed (if desired). To set the encoder parameters the tab “Parameter Assignment” has to be selected.



After choosing the „Device-specific parameters“ the different parameters (depend on the encoder version) can be set. If several possibilities are offered for one parameter the parameters list is opened by

double clicking on it. Numerical values have to be entered directly. The example shows the parameters of encoder version BEI IDEACOD 2.2, the version with the highest functionality.



## PROFIBUS USER MANUAL

Due to the software tool STEP7 32-bit parameter values (e.g. total measuring range, software limit switches) have to be divided into high and low word.

Example:

Decimal	Hexadecimal		Hexadecimal	Decimal (to be entered)
129600	00 01 FA 40	High word	00 01	1
		Low word	FA 40	64064

The decimal value „1“ has to be entered into the high word parameter field, the value 64064 into the low word parameter field.

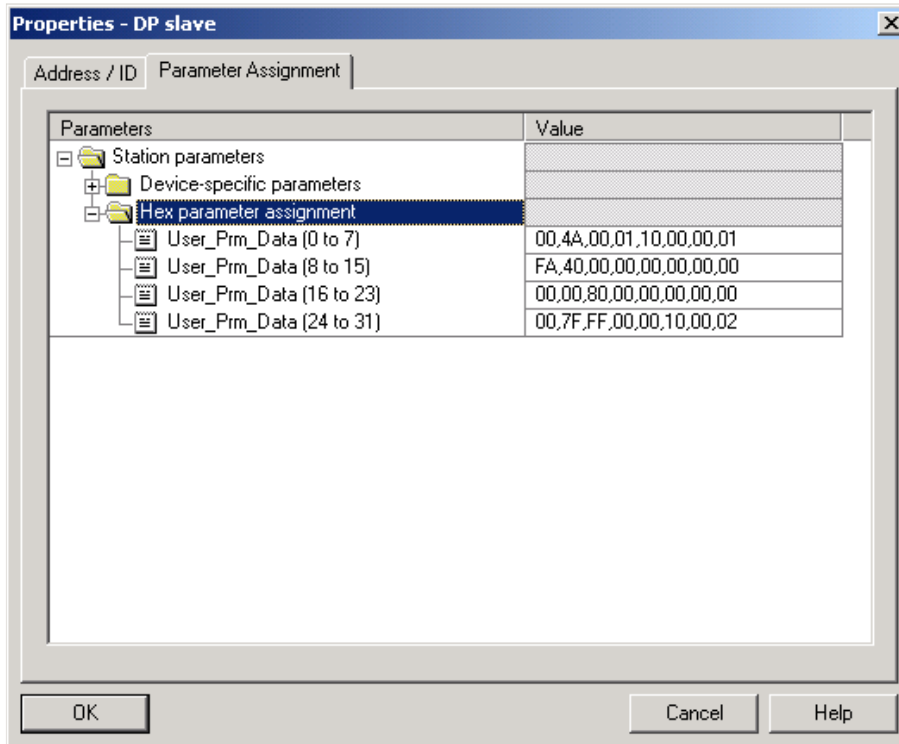
Or:

Divide the value by 65536; enter the integer part of the result into the high word parameter field, the remainder into the low word field.

$$129600 / 65536 = 1.977539 \rightarrow \text{integer part} = 1 \rightarrow \text{high word} = 1$$

$$129600 - 1 \times 65536 = 64064 \rightarrow \text{remainder} = \mathbf{64064} \rightarrow \text{low word} = 64064$$

It is also possible to enter the parameters directly as hexadecimal code. However this is very complicated and it should be avoided if possible.



## PROFIBUS USER MANUAL

---

### 8 Technical Data

See Datasheets.

### 9 Appendix

#### 9.1 FAQ absolute encoder Profibus

##### Problem

There are problems with the profibus network (bus error, no answer from the encoder) if one of the following profibus masters is used:

- SIEMENS S5-95U
- Master Interface SIEMENS IM 308-B
- Softing PROFiboard
- Allen Bradley 1785 PFB/B
- Mitsubishi A1SJ 71PB92D

##### Possible cause

##### Problem

If COM PROFIBUS Version 5.0 is used it is not possible to insert the POSI+ encoder into the hardware configuration if the PLC S5-95U is used.

##### Cause

The S5-95U does not support the full diagnostic data length (57 bytes). COM PROFIBUS V5.0 checks the GSD-parameter „Max\_Diag\_Data\_Len=57“ and prevents the configuration of both devices together.

##### Problem

PLC and master are switched on, bus is active, but there is no answer from the encoder.

##### Possible solutions

The masters do not support the full diagnostic data length (57 bytes).

##### Solution

If it is possible the maximum number of diagnostic data per slave should be increased in the master.

If this is not possible the encoder can either be used as a „class 1“ encoder (diagnostic data length 16 bytes) or one of the manufacturer-specific versions (BEI IDEACOD 2.1 or 2.2) can be used with reduced diagnostics (cp. 5.1.5).

##### Solution

Use COM PROFIBUS Version 3.3, choose one of the manufacturer-specific BEI IDEACOD-versions (BEI IDEACOD 2.1 or 2.2) and activate the reduced diagnostics.

If COM PROFIBUS V5.0 is to be used the configuration of the BEI IDEACOD encoder is only possible with a modified GSD file (slave key „Max\_Diag\_Data\_Len“ has to be changed).

First of all the state of LEDs should be checked (cp. section 6.3). Possibly this can give hints to the cause of the problem.

Both LEDs dark: Check power supply!

Both LEDs bright:

Encoder is ready but receives no configuration or parameter telegrams. Check the address

## PROFIBUS USER MANUAL

---

setting . Check the connection of the bus lines (BUS IN / BUS OUT). Check the hardware configuration in your software tool.  
Green LED bright, red LED flashing:

Parameter error! Check parameters, e.g. the rules for setting the total measuring range (cp. 4.1.6)

## PROFIBUS USER MANUAL

### Problem

Sporadic bus errors

The resistance value must be about 110 Ω (220 Ω parallel 220 Ω).

### Possible cause

Terminating resistors not correct

### Possible cause

EMC problems

### Possible solution

Check terminating resistors!

The resistors of 220 Ω must be switched on at the beginning and at the end of the bus segment. Switch off the power supply and measure the resistance between the terminals A and B in the connection cap.

### Possible solutions

Is the used baud rate acceptable for the length of the bus lines? Try to use lower baud rate if necessary. Check the connection of the cable shield in the connection cap. Are all cables and conductions laid according to EMC rules?

## 9.2 Definitions

Address	A number, which is assigned to each node, no matter whether it is a master or slave. The address is set (non-volatile) in the connection cap using rotary switches.
Baud rate	Data transfer rate specified as the number of bits transferred per second (baud rate = bit rate).
Bus Node	Device, which can send, receive or amplify data via the bus.
DDLML	Direct Data Link Mapper. Interface between Profibus-DP functions and the encoder software.
DDLML_Data_Exchange	Operating status of the bus, for standard data transfer.
DDLML_Set_Prm	Operating status of the bus, configuration and parameter are transmitted
„DDLML_Slave_Diag“	Operating status, diagnostic data are requested from the slave (e.g. encoder).
Diagnostics	Identification, localization, classification, display, additional evaluation of faults, errors and messages.
Freeze	This is a master command to the slave. This allows the master to freeze the states of the inputs (for example of the absolute angular encoder) to their current value. The input data are only updated again after reception of the UNFREEZE command.

## PROFIBUS USER MANUAL

---

GSD file	File that contains slave-specific characteristics. The GSD file is supplied by the manufacturer of the profibus slave. The GSD format is standardized (defined in GSD specifications), so configuration tools of various manufacturers can use the GSD files.
Master	"Active" device in the network that can send data without request. Controls the data interchange.
Octet	Data unit of 8 bits = 1 byte
Profibus	Process Fieldbus, European fieldbus standard, which is defined in the PROFIBUS Standard (EN 50170). This specifies functional, electrical and mechanical characteristics for a bit-serial fieldbus system.
Slave	Bus node, that only sends data on request of the master. Absolute rotary encoders are always slaves.
Terminating resistor	Resistor that terminates the bus cable; terminating resistors are always required at the end of a cable or segment.
Word	Expression used for a data unit of two bytes.

**PROFIBUS USER MANUAL**

---

**10 Index**

<b>B</b>	
Bus termination .....	5
<b>C</b>	
Class 1 .....	11
Class 2 .....	11
Code sequence .....	12
Commissioning mode .....	23
Configuring the encoder .....	31
Connecting	
bus lines .....	6
power supply .....	6
Connection cap	
settings .....	5
<b>D</b>	
Data format .....	10
Desired measuring units .....	17
Diagnostic messages .....	26
<b>E</b>	
Encoder configurations .....	9
<b>F</b>	
FAQ .....	35
<b>G</b>	
GSD file .....	38
Installation .....	30
<b>H</b>	
High word .....	34
<b>I</b>	
Installation .....	5
<b>L</b>	
LEDs .....	29
Low word .....	34
<b>P</b>	
Parameter settings .....	11
Parameters .....	33
Physical impulses .....	16, 18, 20
Preset function .....	14
Preset value .....	25
Profibus Nutzerorganisation .....	4
Profile for Absolute Encoders .....	4
<b>S</b>	
Shorter Diagnostics .....	19
Software-limit switch .....	19
Station address .....	5
Status bits .....	22
STEP 7 .....	30
<b>T</b>	
Teach-In Start .....	24
Teach-In Stop .....	24
Technical Data .....	35
Total measuring range .....	13
<b>V</b>	
Velocity	
Time base .....	21