

SIMPLIFY YOUR MAILING SYSTEMS WITH
A POWERFUL MAIL SOFTWARE SOLUTION



SOFTWARE SOLUTIONS

iMCM G2

Managing Your
Mailing And
Shipping Is Easier
Than Ever!

HASLER

America's better choice.®



MANAGING MAIL AND SHIPPING IS EASY WITH HASLER'S iMCM G2, YOUR FULLY-INTEGRATED SOFTWARE SOLUTION.

iMCM G2 employs the latest in internet and "touch screen" technologies to improve efficiency and productivity for outgoing mail and parcel shipments.

Superior cost management

Compare costs and choose any carrier—domestic or international—from Hasler's easy-to-use iMCM G2.

- **Address Correction**—reduce and eliminate carrier fees and penalties
- **Robust Reporting System**—accurate analysis of annual, monthly expenditures for mailing and shipping
- **Fully Supports Local and regional carriers**—add the couriers and services you use everyday
- **User Configurable**—supports your custom rates
- **Prepare and Print**—certified mail forms (including USPS® Form 3877)



SELECT THE CARRIER THAT'S RIGHT FOR YOU



Internet enabled tracking

Instant access to USPS®, FedEx®, UPS, DHL/Airborne for tracking and delivery status on-line.



International carrier support*

The iMCM G2 provides implementation of carrier services for all international shipping and meets all customer shipping and document requirements. The software prepares and prints required customs documentation, forms and labels for FedEx®, DHL and UPS.

*Carrier approval is required for international shipping.

Multiple shipper number support

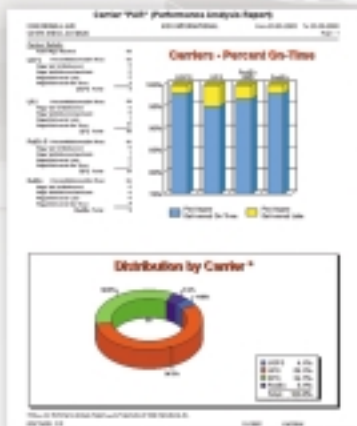
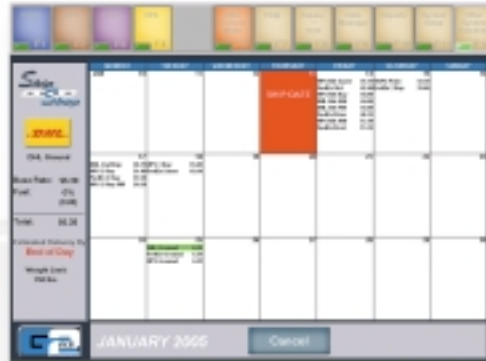
- Provides support for complete company identities, allowing the shipper to process for multiple divisions, clients or customers.
- Creates a separate return address and discrete billing based on carrier account numbers, saving accounting time and increasing accuracy.
- Indispensable for separate entity support to third party logistics providers (3PL).

Automatic fuel surcharge "add-on" for all carriers

Prevents "underbilling" clients and customers for significant carrier-imposed surcharges.

"Ship Shop" carrier rate shipping tool

Provides graphical calendar-based picture of delivery dates and rates, so users pick the right rate every time. More options and better routing choices result in less wasted time researching to find the best method of shipment.



Are your carriers up to PAR?

Performance Analysis Reports™ (PAR) automatically check the carrier performance and status of your packages. E-mail notifications (shipped, delivered) are automatically generated to keep the senders and receivers aware of shipping status.

Complete postage accounting module

Supports multi-level accounting, so less time is spent allocating costs to appropriate cost centers and customers. This feature provides the capability to add on fees and supports validation of account numbers and budgets, thereby vastly improving client billing accuracy.

Address correction and validation services

The iMCM G2 provides address correction services and makes corrections, guaranteeing the best routing decisions. A useful and important money-saving tool, this feature can save as much as \$10 per corrected address for air shipments, and approximately \$5 per corrected address for ground and other shipping services. (Subscription required.)



"Future Ship" and "Pack & Hold" functions

Supports processing shipments that may require further actions. "Future Ship" allows users to plan workflow in advance, letting managers schedule manpower in a level fashion, minimizing peaks and overtime hours. This feature also allows users to process items on "slack" days to be turned over to the carrier on a future date, resulting in better customer relations and fewer expedited orders late in the day.

"Pack & Hold" provides a "suspend shipment, but process" capability to allow for administrative actions such as credit approval and other decisions which affect how and when an order is shipped. Easy release is the hallmark for both of these critical functions.

SWC Report

A "What if" Report which shows an optimized analysis of actual usage, by carrier, including fuel surcharges and fees.



THE iMCM G2 IS YOUR COMPLETE AND SINGLE SOURCE FOR ALL YOUR MAILING AND SHIPPING REQUIREMENTS. THE iMCM G2 IS EQUIPPED WITH THE FOLLOWING INTEGRATED CAPABILITIES:

Real Time Interface (RTI) option

The optional Real Time Interface allows the exchange of data between ODBC compliant systems and the iMCM G2 program, enabling the straightforward manipulation of information, the application of business rules, and collection of data for use throughout the enterprise.

Based on a powerful "tool-kit," the RTI connects disparate systems, exchanges information and improves operations – all in the background without operator involvement, delivering benefits such as:

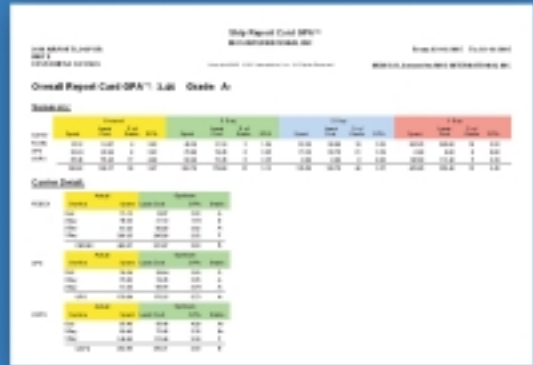
- Faster processing
- Less paperwork
- Elimination of error-prone, illegible, handwritten information
- Faster turnaround for customer service research (less time spent on the phone with the customer)

"Work Ahead" option

This feature allows the operator to start a batch of letters on the mailing machine, then process parcels while the mailing machine completes the job.

iMCM G2 "Report Card"

The "iMCM G2 Advisor" is a "Report Card" or analysis tool that presents historical transaction data in an easy-to-use format. The report card allows for shipping room efficiency, cost effective carrier selection, and appropriate analysis of service utilization for a given period of time.



Ground Hog™ shows air vs. ground savings



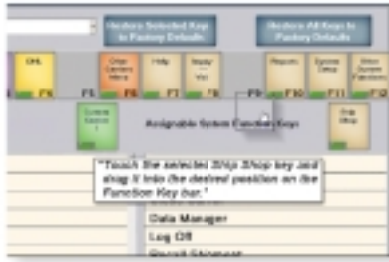
Shipment Profile



Sample Reports

Self-paced operator training

The iMCM G2 is user friendly. Built-in multi-media tutorials enable operators to train themselves, get answers, and learn to be efficient.



Our Interactive User's Manual is integrated into the software. Coupled with easy to understand context sensitive help and instructions, answers are always at your fingertips.

Easy to operate

Colorful and intuitive graphical user interface screens make it easier to use.



An optimized touch screen monitor with keyboard display eliminates the need to use a mouse or keyboard for many frequently used functions.

Bright, easy to read carrier screens contain complete information to ensure maximum productivity.

Automatic updates and upgrades

The iMCM G2 provides you with SoftwareCare™ that automatically updates your system with the newest features and rate changes. These upgrades are released periodically throughout the year, delivered to the shipper in advance of the effective date.

FOR YOUR OUTBOUND MAILING SOLUTIONS

For a demonstration or more information, please contact your local Hasler dealer, or call **800/995-2035**. Email: info@haslerinc.com

HASLER

Hasler,® Inc.
Mailing Systems and Solutions
www.haslerinc.com



An ISO 9001
Quality System
Certified
company

Hasler's network of independent dealers provides sales, service, and support throughout North America.

Hasler,® Inc. and America's better choice® are registered trademarks of Hasler, Inc. All other company and product names may be trademarks and are the property of their respective owners. ©2005 Hasler, Inc. All Rights Reserved.

51114 6/05
10M

Customized tracking and reporting

A broad range of accounting and carrier tracking reports can be displayed or printed at any time. With the touch of a button, iMCM G2 will create a summary, or a detailed audit for an individual account, a group of accounts, or all accounts.



These features provide management control and simplify the task of managing information, while increasing visibility of shipping costs, exposing waste, and providing service to the mailroom's internal customers.

Connectivity to a "back office" system is available in a variety of popular formats. (Word, Excel, ODBC and HTML)

iMCM G2 MINIMUM SYSTEM REQUIREMENTS

Computer System:

- 2.4GHz Pentium 4 processor (minimum recommendation)
- 512MB system memory (minimum recommendation)
- 60+GB hard disk storage recommended
- AGP video system with 256MB video RAM recommended
Minimum – 16 bit color with 1024 x 768 capability
- CD/DVD ROM combination drive 48x speed recommended
- USB ports - 4 ports minimum
- RS232 serial ports - 3 ports minimum
Postage meter and scale
Touch screen requires 1 port (may be converted to USB)
- Parallel port (1 LPT is required)
- Monitor resolution must be 1024x768 (touch screen - highly recommended)
- Audio system required for tutorials and voice options

Operating System:

- Windows XP Professional operating system – (only)