

TERRATEK

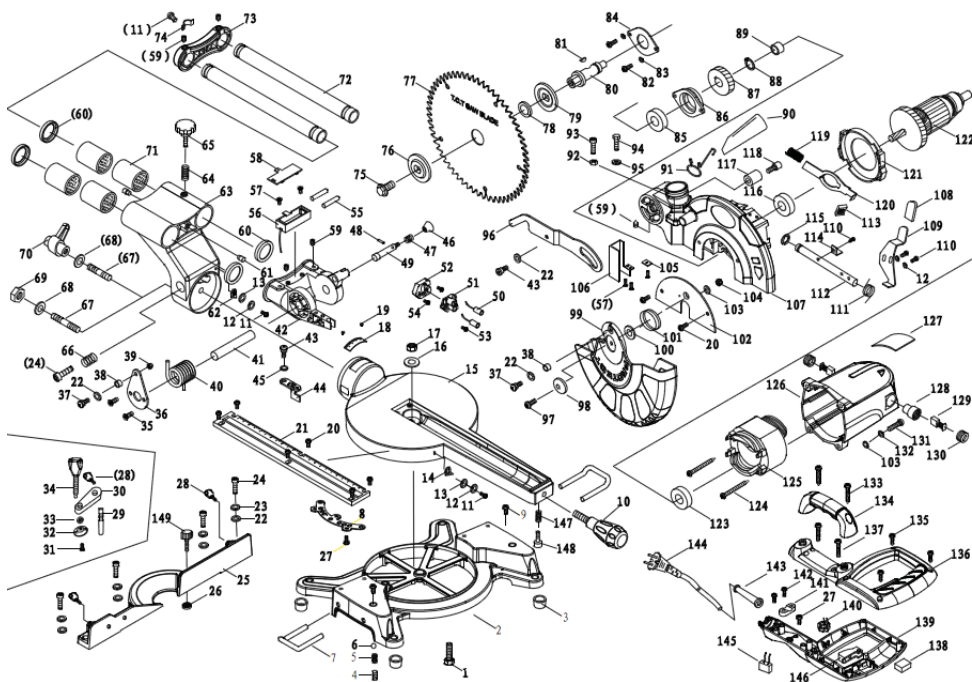
254mm SLIDING MITRE SAW WITH LASER TSMS250LJ



User Manual-Please read and retain for future reference.



Exploded Assembly Diagram



NOTICE: Actual product may vary from pictures shown.



Fig. A



Fig. B

1. Handle
2. ON/OFF switch
3. Release lever
4. Motor
5. Saw shaft lock
6. Movable blade guard
7. Saw blade
8. Clamping device
9. Top handle
10. Workpiece support
11. Stop rail
12. Table insert
13. Adjustable supporting foot
14. Locking screw
15. Pointer
16. Scale
17. Turntable
18. Fixed saw table
19. Scale
20. Pointer
21. Locking screw
22. Dust bag
23. Drag guide
24. Locking screw for drag guide
25. Safety pin
26. Hex key
27. Laser
28. Battery box



Fig.1



Fig.2



Fig.3



Fig.4



Fig.5

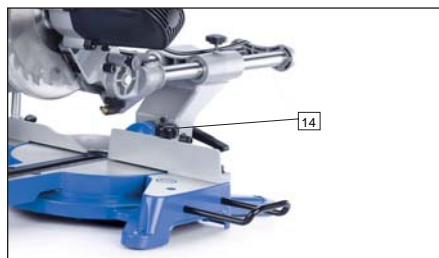


Fig.6



Fig.7

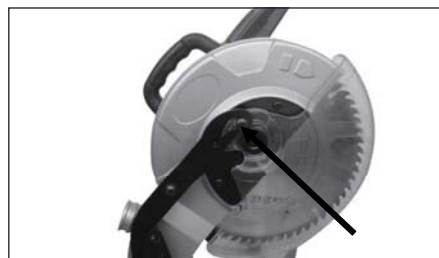


Fig.8



Fig.9



Fig.10



Fig.11

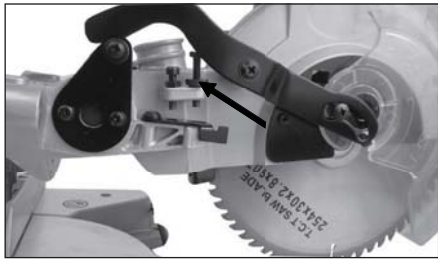


Fig.12



Fig.13



Fig.14



Fig.15



Fig.16



Fig.17



Fig.18

Contents

Parts List

Technical Information

Safety Instructions

Using your tool

Maintenance

Warranty

Parts List

1	Hex bolt	76	Outer flange
2	Base	77	Blade
3	Base foot	78	Lock washer
4	Hex screw	79	Inner flange
5	Steel ball spring	80	Output axis
6	Steel ball	81	Keyway
7	Extension rod	82	Phillips screw
8	Stabilizer bar	83	Flat washer
9	Phillips screw	84	Bearing cap
10	Lock handle	85	Bearing
11	Phillips screw	86	Bearing housing
12	Spring washer	87	Big gear
13	Flat washer	88	Circlip
14	Pointer	89	Roller pin bearing
15	Rotating table	90	Dust bag
16	Flat washer	91	Dust bag bar
17	Lock screw	92	Hex nut
18	Scale	93	Hex screw
19	Rivet	94	Hex bolt
20	Phillips screw	95	Depth adjustment block
21	Kerf	96	Link
22	Flat washer	97	Phillips screw
23	Lock screw	98	Small plate
24	Hex bolt	99	Guard

25	Fence	100	Guard ring
26	Friction plate	101	Guard spring
27	Phillips screw	102	Protection plate
28	Butterfly screw	103	Flat washer
29	Fixed rod	104	Lock nut
30	Link rod	105	Shroud block
31	Step screw	106	Guard shroud block
32	Pressure cover	107	Blade guard
33	Flat washer	108	Blade guard fixed cover
34	Bolt	109	Lock
35	Phillips screw	110	Phillips screw
36	Support plate	111	Small spring
37	Step screw	112	Axis
38	Roller	113	Self-locking cover
39	Nut	114	Spring seat
40	Big spring	115	Ring
41	Protection guard pin	116	Bearing
42	Stand	117	Protection guard fixed cover
43	Step screw	118	Lock screw
45	Washer	119	Self-locking spring
46	Locking pin	120	Lock
47	Locking spring	121	Fan shroud
48	Hollow pin	122	Rotor
49	Guard locking pin	123	Bearing
50	Laser	124	Self tapping screw
51	Laser seat	125	Stator
52	Fixed seat	126	Housing
53	Self tapping screw	127	Label
54	Phillips screw	128	Brush holder
55	Battery	129	Carbon brush
56	Battery box	130	Brush holder cover
57	Phillips screw	131	Phillips screw

58	Battery	132	Spring washer
59	Battery box cover	133	Self tapping screw
60	End cap	134	Handle
61	Rubber pad	135	Self tapping screw
62	Pointer	136	Handle cover
63	Rotating table stand	137	Phillips screw
64	Locking spring	138	Switch
65	Lock handle	139	Handle
66	Spring	140	Induction
67	Double head bolt	141	Cable clamp
68	Flat washer	142	Self tapping screw
69	Locking screw	143	Cable cover
70	Locking handle	144	Cable plug
71	Linear bearing	145	Capacitor
72	Slide rod	146	Key switch
73	Bearing cover	147	Spring
74	Cord clip	148	Rubber screw
75	Hex bolt	149	Locking screw

Technical Information

Voltage:	230-240V ~ 50Hz
Rated Power:	S1 1600W, S6 2000W (25%)
No Load Speed:	5000 RPM
Blade Size:	254 X 16mm
Cutting Capacity:	0°/90°(H x L):78 mm x 340 mm 45°/90° (H x L) : 78 mm x 240 mm 0°/45°(H x L) : 42 mm x 340 mm 45°/45°(H x L) : 42 mm x 240 mm
NW/GW:	16/18 kg



Read this entire manual before using this product. Failure to do so can result in serious injury. Save this manual for future reference.

Copyright© 2013 by ACL Group Ltd. All rights reserved. This manual or any artwork contained herein must not be reproduced in any shape or form without the express written consent of ACL Group Ltd. Diagrams within this manual may not be drawn proportionally. Due to continuing improvements, actual product may differ slightly from the product described herein.

Read and Keep This Manual

Please read carefully all instructions within this manual. Failure to follow all safety warnings can result in serious personal injury. The term “Power Tool” in all of the following warnings refers to your mains operated (corded) or battery operated (cordless) power tool

Important SAFETY Information



This symbol is to warn you of potential personal injury hazards. Please read carefully the notes along side this warning to avoid possible injury or death.

General Safety Rules



WARNING! Read all instructions. Failure to follow all instructions listed below may result in electric shock, fire and/or serious injury. The term “power tool” in all of the warnings listed refers to corded or cordless power tools.

Work area safety

Keep work area clean and well lit. Cluttered or dark areas invite accidents.

Do not operate power tools in explosive atmospheres, such as in the presence of flammable liquids, gases or dust. Power tools create sparks which may ignite the dust or fumes.

Keep children and bystanders away while operating a power tool. Distractions can cause you to lose control.

Electrical safety

Before use, ensure that the power outlet you are using matches the plug on your power tool and that the voltage of the outlet matches that of your power tool.

Only use grounded extension cords with power tools fitted with 3 pin plugs and if using outdoors ensure any extension cord is suitable for outdoor use.

Always try to avoid body contact with grounded surfaces, such as radiators, cooking ranges and any other fixed appliance with metal surfaces.

Do not expose your power tool to wet or damp conditions and NEVER use in rain. Check regularly the power cord of your machine and any extension cord that you are using for damage.

Do not carry or pull the machine with the power cord.
Ensure the cord is clear from hot surfaces, oil or sharp objects.

Personal safety

Never use your power tool whilst under the influence of alcohol, drugs or medication. Tiredness can often cause accidents, stay alert.
Never use your power tool without the correct guards in place.

Always use ANSI approved eye protection and dust mask. Non slip safety shoes and hearing protectors should be worn at all times when using your power tool.

Ensure any dust collecting device supplied with your machine is connected correctly before use.
Ensure all loose clothing, long hair or jewelry is kept clear of the machine.

Before plugging your power tool into the power outlet ensure the power tool is in the OFF position.
Check that wrenches or adjusting keys have been removed. Any wrench or key left attached to a moving part can result in injury.

Power tool use and care.

Keep your power tool clean and well serviced at all times.
Never adjust or service any power tool before disconnecting from the mains electricity supply.
Always use the correct tool for the job.
Never force the tool to work harder than it is designed to do.
Never use your power tool with broken parts such as switches, guide fences or leg stands.
ALWAYS keep your power tools away from children.
Keep cutting tools sharp to ensure less stress on the motor.
Only have your power tool serviced by a qualified repair agent using manufacturers recommended parts.

Service

Have your power tool serviced by a qualified repair person using only identical replacement parts. This will ensure that the safety of the power tool is maintained.
Develop a periodic maintenance schedule for your tool. When cleaning a tool be careful not to disassemble any portion of the tool since internal wires may be misplaced or pinched or safety guard return springs may be improperly mounted. Certain cleaning agents such as gasoline, carbon tetrachloride, ammonia, etc. may damage plastic parts.

When servicing a tool, use only identical replacement parts. Follow instructions in the Maintenance section of this manual. Use of unauthorized parts or failure to follow Maintenance Instructions may create a risk of electric shock or injury.

WARNING: For your own safety read Instruction Manual before operating grinder.

- A) Wear eye protection.
- B) Keep hands out of the path of blades/cutters.
- C) Do not operate tool without guards in place.
- D) Do not perform any operation freehand.
- E) Never reach around cutting tools.
- F) Turn off tool and wait for blade/cutter to stop before moving workpiece or changing settings.
- G) Disconnect power(or unplug tool) before changing blade/cutter or servicing.

GENERAL SAFETY INSTRUCTIONS

Read this owner's manual completely and make sure you understand all of its safety guidelines.

1. KEEP GUARDS IN PLACE and in working order.
2. REMOVE ADJUSTING KEYS & WRENCHES. Before turning on the power tool, make sure the keys and adjusting wrenches have been removed.
3. KEEP WORK AREA CLEAN. Cluttered areas and benches invite accidents.
4. ALWAYS REMAIN ALERT WHEN THE TOOL IS IN USE. Inattention on the part of the operator may lead to serious injury.
5. DON'T USE IN A DANGEROUS ENVIRONMENT. Don't use power tools in damp or wet locations or expose them to rain. Keep work area well lit.
6. KEEP CHILDREN AWAY. All visitors should remain at a safe distance from work area.
7. MAKE WORKSHOP CHILD-PROOF with padlocks, master switches or by removing starter keys.
8. USE THE RIGHT TOOL. Don't force a tool or attachment to do a job for which it was not designed.
9. USE THE PROPER EXTENSION CORD. Make sure your extension cord is in good condition. When using an extension cord, be sure to use one heavy enough to carry the current your product will draw. An undersized cord will cause a drop in line voltage resulting in loss of power and overheating. Table (see Table 1) shows the correct size to use depending on cord length and nameplate ampere rating. If in doubt, use the next heavier gauge. The smaller the gauge number, the heavier the cord.
10. DON'T FORCE THE TOOL. It has been designed to operate at maximum safety and performance levels.
11. DO NOT FORCE THE MATERIAL BEING CUT. Always let the tool cut at its own speed.
12. WEAR PROPER APPAREL. Do not wear loose clothing, neckties, rings, bracelets or other jewelry which may get caught in moving parts. Non-slip foot wear is recommended. Wear protective hair covering if you have long hair.

13. **ALWAYS USE SAFETY GLASSES.** Also use face or dust mask for commercial cutting operations. Everyday eyeglasses only have impact-resistant lenses, they are NOT safety glasses.
14. **SECURE WORK.** Use clamps or a vise instead of your hand to hold work when practical. This safety precaution allows for proper tool operation using both hands.
15. **DON'T OVERREACH.** Keep proper footing and balance at all times.
16. **MAINTAIN TOOLS WITH CARE.** Keep tools clean and in good working condition for maximum safety performance. Follow instructions for lubricating and changing accessories.
17. **DISCONNECT TOOLS BEFORE SERVICING** – when changing accessories, such as blades, bits, cutters, etc.
18. **REDUCE THE RISK OF UNINTENTIONAL STARTING.** Make sure switch is in OFF position before plugging in.
19. **USE RECOMMENDED ACCESSORIES.** Consult the owner's manual for recommended accessories. The use of improper accessories may increase risk of injury.
20. **MAKE SURE YOU USE THE CORRECT TOOL** for the job you are doing.
21. **NEVER STAND ON TOOL.** Serious injury could occur if the tool is tipped or if the cutting tool is unintentionally contacted.
22. **CHECK DAMAGED PARTS.** Before further use of the tool, damaged part(s), (i.e., guard) should be carefully checked to determine that it will operate properly and perform its intended function. Check for alignment of moving parts, binding of moving parts, breakage of parts, mounting and any other condition that may affect the tools operation. A guard or other part that is damaged should be properly repaired or replaced.
23. **Replace damaged wheels/cutters immediately.**
DO NOT USE DAMAGED WHEELS/CUTTERS. They may cause bodily injury.
24. **DIRECTION OF FEED.** Feed work into the wheel/cutter against the direction of rotation of the wheel/cuter only.
25. **NEVER LEAVE TOOL RUNNING UNATTENDED.**
Turn power off. Don't leave tool until it comes to a complete stop.
26. **Double Insulated tools** are equipped with a polarized plug (one blade is wider than the other). This plug will fit in a polarized outlet only one way. If the plug does not fit fully in the outlet, reverse the plug. If it still does not fit, contact a qualified electrician to install a polarized outlet. Do not change the plug in any way. Double Insulation eliminates the need for the three wire grounded power cord and grounded power supply system.

This power tool is supplied with all the relevant safety guards and features, it should be checked before every operation, this manual should be read and kept in a safe place. Whilst we warn of all the possible risks attached to using power tools any operator must have read and understood the manual and apply their own caution and common sense when using this power tool.

Following this guide will greatly reduce your risk of electric shock or injury.

Only use qualified repair agents to service this power tool.

Only use qualified electrician to repair any damaged wiring.

NEVER remove the grounding prong from the power toll or extension cord.

Symbols

IMPORTANT: Some of the following symbols may be used on your tool.

V.....volts

W..... Wattage

Hz.....hertz

~..... alternating current

.../m.....revolutions per minute

□.....class II construction (double insulated)


Kg.....kilograms


No.....No load speed

DC=.....Direct Current

CE.....Conforms to relevant safety standards

..... Wear hearing protection.Wear eye protection.Wear respiratory protection.

.....Read the instruction manual

..... Electric products should not be disposed of with household waste,
please recycle where facilities exist, Check with your Local Authority or
retailer for recycling.

.....ATTENTION!

.....Keep hands away, do not touch.

.....Keep the children away.

Specific Safety Rules

1. Wear eye protection.
2. Keep hands out of path of saw blade. Avoid contact with any coasting blade. It can still cause severe injury.
3. Do not operate saw without guards in place.
Check blade guard for proper closing before each use. Do not operate saw if blade guard does not move freely and close instantly. Never clamp or tie the blade guard into the open position.
4. Do not perform any operation freehand. The workpiece must be secured firmly against the base and guide fence with a vise during all operations. Never use your hand to secure the workpiece.
5. Never reach around saw blade.
6. Turn off tool and wait for saw blade to stop before moving workpiece or changing settings.
7. Unplug tool before changing blade or servicing.
8. To reduce the risk of injury, return carriage to the full rear position after each crosscut operation.
9. Stopper pin which locks the cutter head down is for carrying and storage purposes only and not for any cutting operations.
10. Do not use the tool in the presence of flammable liquids or gases.

11. Check the blade carefully for cracks or damage before operation. Replace cracked or damaged blade immediately.
Gum and wood pitch hardened on blades slows saw and increases potential for kickback. Keep blade clean by first removing it from tool, then cleaning it with gum and pitch remover, hot water or kerosene. Never use gasoline to clean blade.
12. While making a slide cut, KICKBACK can occur. KICKBACK occurs when the blade binds in the workpiece during a cutting operation and the saw blade is driven back rapidly towards the operator. Loss of control and serious personal injury can result. If blade begins to bind during a cutting operation, do not continue to cut and release switch immediately.
13. Use only flanges specified for this tool.
14. Be careful not to damage the arbor, flanges (especially the installing surface) or bolt. Damage to these parts could result in blade breakage.
15. Make sure that the turn base is properly secured so it will not move during operation. Use the holes in the base to fasten the saw to a stable work platform or bench. NEVER use tool where operator positioning would be awkward.
16. For your safety, remove the chips, small pieces, etc. from the table top before operation.
17. Avoid cutting nails. Inspect for and remove all nails from the workpiece before operation.
18. Make sure the shaft lock is released before the switch is turned on.
19. Hold the handle firmly. The saw moves up or down slightly during start-up and stopping.
20. Make sure the blade is not contacting the workpiece before the switch is turned on.
21. Before using the tool on an actual workpiece, let it run for a while. Watch for vibration or wobbling that could indicate poor installation or a poorly balanced blade.
22. Wait until the blade attains full speed before cutting.
23. Stop operation immediately if you notice anything out of the ordinary.
24. Do not attempt to lock the trigger in the on position.
25. Stay alert. Blades are extremely dangerous
26. Use only accessories recommended in this manual. Use of improper accessories such as abrasive wheels may cause an injury.
27. NEVER hold workpiece on right side of blade with left hand or vice versa. This is called cross armed cutting and exposes user to risk of SERIOUS PERSONAL INJURY. ALWAYS use vise to secure workpiece.
28. Do not abuse cord. Never pull on the cord to disconnect it from the receptacle. Keep cord away from heat, oil, water and sharp objects.
29. Some materials contain chemicals which may be toxic. Take appropriate measures to prevent dust inhalation and skin contact. Follow material supplier safety data.
30. Some materials contain chemicals which may be toxic. Take appropriate measures to prevent dust inhalation and skin contact. Follow material supplier safety data.

Additional Safety rules for Laser

WARNING: This saw is equipped with a Laser light, DO NOT stare into the beam because serious injury may occur.

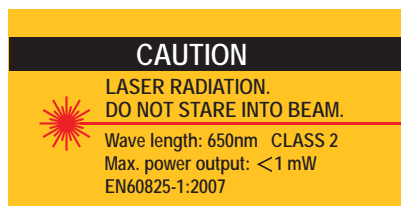
LASER LIGHT - DO NOT STARE INTO BEAM, APERTURE, or into a reflection from a mirror-like surface.

AVOID EXPOSURE - LASER LIGHT IS EMITTED FROM FRONT GUARD APERTURE.

CAUTION: Use of controls or adjustments, or performance of procedures other than those specified herein may result in hazardous laser light exposure.

DO NOT DISASSEMBLE LASER MODULE. The laser is a CLASS II LASER PRODUCT that can emit laser power up to 1 mW 650nm, which could result in exposure with the module disassembled. The laser unit complies with EN60825-1:2007 .

USE OF CONTROLS OR ADJUSTMENTS OR PERFORMANCE OF PROCEDURES OTHER THAN THOSE SPEC IFIED HEREIN MAY RESULT IN HAZARDOUS RADIATION EXPOSURE.



WARNING: Do not attempt to repair or disassemble the laser level. If unqualified persons attempt to repair this laser product, serious injury may result. Any repair required on this laser product should be performed by authorized service center personnel.

CAUTION: The use of optical instruments with this product will increase eye hazard.

Unpacking

Carefully remove the product and any accessories from the box. Make sure that all items listed in the packing list are included.

Package contents

- A) Saw
- B) Clamp
- C) Wrench
- D) Dust bag
- E) Supports
- F) User manual

Functional Description

WARNING: Disconnect the plug from the power source before making any assembly, adjustments or changing accessories. Such preventive safety measures reduce the risk of starting the tool accidentally.

Assembly

WARNING: Disconnect the plug from the power source before making any assembly, adjustments or changing accessories.

Clamp

To install clamp simply insert it into the provided hole on the fence on the right or left side depending on the cut you are doing and tighten nut. (Fig.1)

Dust bag

Squeeze metal clamp and place over dust outlet and release clamp. (Fig.2)

Supports

Insert supports in both ends of table and secure with screw. (Fig.3)

On-Off Switch

Ensure that the switch is in the "OFF" position. If the plug is connected to a receptacle while the switch is in the "ON" position, the power tool will start operating immediately and can cause serious injury.

To turn the saw on or off, squeeze and release the on/off switch. (Fig.4)

Turning Laser Beam ON/OFF

CAUTION: LASER RADIATION

Do not stare into beam

To turn on the laser beam, press the upper position (Fig.13) of the switch. Press the lower position to turn off. Laser line is factory adjusted so that it is positioned within 1 mm (0.04") from the side surface of the blade (cutting position). Make a test cut and position material to be cut accordingly.

NOTE: When laser line is dim and almost or entirely invisible because of the direct sunlight, relocate the work area to a place not exposed to the direct sunlight.

Using your miter saw

Important Note:

Transporting or moving this machine must only be done with the arm in the locked position using the transit lock pin. (Fig.5)

When assembling your machine do not connect to the power supply until you have fully read and understood this manual. After carrying out all checks and making any necessary adjustments check that the machine switch is in the off position, connect to the power supply and then switch the machine on and off quickly, this will allow you to check for any loose blades or accessories without the machine gaining full speed. Disconnect from the power supply before attempting any adjustments. During manufacturing your machine is set and calibrated to cut accurately however movement can occur during transit. If you find that your machine is not cutting accurately you can make several small adjustments easily.

Resetting the Table to 90 degrees with the Blade

1. Disconnect the machine from the mains.
2. Lock the arm in the transit position
3. Loosen the locking screw (14). (Fig.6)
4. Align the pointer and table to 0 degrees.
5. Tighten locking screw (14).
6. Loosen the Bevel Lock Handle. (Fig.7)
7. Position the saw arm to 0 degrees with the blade 90 degrees to the table surface.
8. Tighten the Bevel Lock Handle.
9. Place a 90 deg. Set square against the table and blade (avoiding contact with the blade teeth) rotate the blade slowly with a gloved hand, checking that it is aligned correctly. (Fig.10)
10. Adjust the pointer to read 0 degrees. (Fig.11)
11. Retighten Bevel lock handle.

Fence to Table Adjustment

1. Disconnect the machine from the mains.
2. Lock the arm in the transit position
3. Loosen locking screw (14).
4. Align the pointer and table to 0 degrees.
5. Tighten locking screw (14).
6. Loosen the 4 fence screws (Pt. #24)
7. Place a set square against the fence and blade (avoiding the blade teeth) (Fig.10)
8. Adjust the fence until square.
9. Retighten the fence screws.
10. Adjust the pointer to read 0 degrees.

Blade Cutting Depth Adjustment (for use when trenching)

The blade is factory set to cut all the way through a piece of timber under normal use. If you require a trench cut the blade can be adjusted to cut to your pre-determined depth.

1. Disconnect from the power supply.
2. Lift the saw Arm
3. Adjust the depth cut (Trenching) stop screw to the desired position. (Fig.12)
Always Use clamp (Fig.1) to secure the material. This clamp can be moved to either side of the table by loosening the locking knob. Ensure this knob is retightened before using the saw. Support long lengths using roller support stands.
4. Check depth on waste timber before commencing.

Compound Miter Cuts

A compound miter cut uses a Miter cut and a Bevel cut together.

The main uses for this type of cut are: picture frames, cutting moldings, roof framing and for making boxes with sloping sides.

It is advisable to make a test cut on a piece of scrap wood before cutting into your actual work piece.

Basic Cross Cutting with Fixed Blade

1. Pull the release knob and lift the saw arm.
2. Loosen locking screw (14). (Fig.6)
3. Move the table to the required angle.
4. Fully tighten the Miter lock handle. (If the table is not locked firmly it can result in personal injury).
Always Use clamp to secure the material. This clamp can be moved to either side of the table by loosening the locking knob. Ensure this knob is retightened before using the saw.
Support long lengths using roller support stands.
5. Turn the Laser guide on. (Fig.13)
6. Align the marked location of the cut on the material with the saw blade.
7. Grasp the operating handle and squeeze trigger to turn on the machine.
8. Allow the machine to free run to its maximum speed before making the cut.
9. Push down the release lever (3) to release the machine head (4). Then make the cut.
10. Allow blade to completely stop before raising the arm to retrieve the work piece.

IMPORTANT:

Always Use clamp to secure the material. This clamp can be moved to either side of the table by loosening the locking knob.

Ensure this knob is retightened before using the saw.

Support long lengths using roller support stands.

Slide Cutting

1. Pull and twist the release knob (Fig.9)
2. Pull the saw arm towards you.
3. Position and lock the work piece using the clamp.
4. Grasp the operating handle and squeeze trigger to turn on the machine
5. Allow the machine to free run to its maximum speed before making the cut.
6. Press the guard release trigger
7. Make the cut.
8. Allow blade to completely stop before raising the arm to retrieve the work piece.

Angle (Bevel) Cutting

This type of cut is obtained when the Table is set at 0 degrees and the blade at any angle required between 0 and 45 degrees left or right (dual bevel).

1. Loosen the Bevel lock. (Fig.7)
2. Move the saw arm to the required angle. (Fig.14)
3. Re-tighten the Bevel lock.
4. Grasp the operating handle and squeeze trigger to turn on the machine.
5. Allow the machine to free run to its maximum speed before making the cut.
6. Make the cut.
7. Allow blade to completely stop before raising the arm to retrieve the work piece.

Changing the blade

DANGER: Do not use any blade larger than the stated capacity of the saw. It may come into contact with the blade guard and cause harm.

Do not use a blade too thick to allow the outer blade washer to engage with the flats on the spindle. This will prevent the blade screw from securing the blade on the spindle.

Do not use this saw to cut metal or masonry

1. Disconnect the machine from the power supply
2. Disengage the saw arm by pushing down on the operating handle pull and twist the release knob.
3. Raise the arm to its highest position.
4. Hold blade guard in the up position and press spindle lock, (Fig.15) (Rotate blade carefully until blade locks)
5. Use hex key to remove the blade bolt (Fig.8 & 16) by loosening in a clockwise direction. Note: This bolt has a left hand thread
6. Remove outer blade washer and blade.
7. Clean and lightly oil outer and inner blade washers, do not remove inner blade washer.
8. Replace blade ensuring the teeth are in the correct direction for rotation. The blade has a direction indicator arrow printed on it, the teeth must always face down.
9. Fit outer blade washer.
10. Depress the spindle lock.
11. Replace and tighten the blade lock bolt using the hex key to secure tightly.
12. Hold rotating lower blade guard and bolt cover in position and re-fit the fixing screws.

13. Attach blade guard retracting arm to the rotating blade guard.
14. Check guard operates freely.
15. Rotate blade carefully ensuring it does not foul the guard.
16. Reconnect to power supply
17. Switch saw on and off before it reaches maximum speed to check for free running.

Maintenance

WARNING: For your own safety, make sure switch is off and unplugged from the power source before doing any maintenance or adjustments. Replace the power cord immediately if it is cut, worn, or damaged in any way.

Accessories

CAUTION: Use only accessories or attachments recommended for use with your Terratek tool specified in this manual. The use of any other accessories or attachments might present a risk of injury to persons. Only use accessory or attachment for its stated purpose.

General Maintenance

1. Keep the air vents free from obstruction and clean regularly
2. Check regularly for any dust particles entering the grills around the motor and the trigger switch. Use a soft brush to remove any dust particles. Wear safety glasses to protect your eyes whilst cleaning.
3. Regularly wipe any saw dust from the fence. A build-up of dust on the fence can prevent accurate cutting.
4. Monitor the dust bag and empty when approximately half full. Always empty into an appropriate container. REMEMBER: dust can be hot and cause fire.
5. If the blade has become dirty, use a blade cleaner (not included) to clean it. Dirty blades will bind more easily, and will more often overheat and burn the wood as it cuts. Overheated blades dull more easily.
6. If the Blade has become dull, replace it. Dull blades will cause increased tear-out and ragged edges on the cuts.
7. Lubricate all moving parts at regular intervals
8. To clean the body of the power tool, only use a soft damp cloth. Do NOT immerse in water. A mild detergent can be used but NOT petrol or any alcohol based product.
9. After extensive use of this power tool the grease in the gearbox will require replacing
10. Should the power cord become damaged only allow a fully qualified electrician to replace or repair

Replacing carbon brushes

Remove and check the carbon brushes regularly. Replace when they wear down to the limit mark. Keep the carbon brushes clean and free to slip in the holders. Both carbon brushes should be replaced at the same time. Use only identical carbon brushes. Use a screwdriver to remove the brush holder caps. (Fig.17) Take out the worn carbon brushes, insert the new ones (Fig.18) and secure the brush holder caps.

Declaration of Conformity

We ACL Group (Intl.) Ltd, England DN6 8LZ declare that the 254mm mitre saw has been manufactured according to our full quality assurance procedures.

The declaration is to certify that it conforms to CE, EMC, LVD, MD and RoHS directives:

EN55014-1/A1:2009
EN55014-2/A2:2008
EN61000-3-11: 2000
EN61000-3-2/A2: 2009

All provisions of Annex 1 of Council Directive 2004/108/EC – EMC directive

EN61029-1/A11: 2010
EN61029-2-9: 2009

All provisions of Annex 1 of Council Directive 2006/42/EC – Machinery Directive
2006/95/EC – Low Voltage Directive
RoHS 2011/65/EU



A handwritten signature in black ink, consisting of a series of loops and a long horizontal stroke extending to the right.

Mr. Alan Garnett, UK QA Manager

Environmental Protection

RECYCLING: WASTE ELECTRICAL PRODUCTS SHOULD NOT BE DISPOSED OF WITH HOUSEHOLD WASTE. PLEASE RECYCLE WHERE FACILITIES EXIST. CHECK WITH YOUR LOCAL AUTHORITY OR RETAILER FOR RECYCLING ADVICE.



Please read the following carefully

ACL Group (Intl) Ltd. and/or it's distributor has provided the parts list and assembly diagram as a reference tool only. Neither ACL Group (Intl). Ltd. or its distributor makes any representation or warranty of any kind to the buyer that he or she is qualified to do any repairs or replace any parts of this product. ACL Group (Intl) Ltd. and its distributor expressly state that all repairs or parts replacement should be done by certified or licensed technicians. The buyer assumes all risk and liability arising out of his or her repairs or parts replacement to the original product.

12 Months Limited Warranty

If within 12 months from the date of purchase you experience any problems with your product, please return the product to its distributor/dealer for repair or replacement. This warranty DOES NOT COVER normal wear, or any damage as a result of accidents, misuse, abuse or negligence.

ACL Group (Intl) Ltd
Doncaster, England
Email: info@terratekintl.com
www.terratekintl.com