

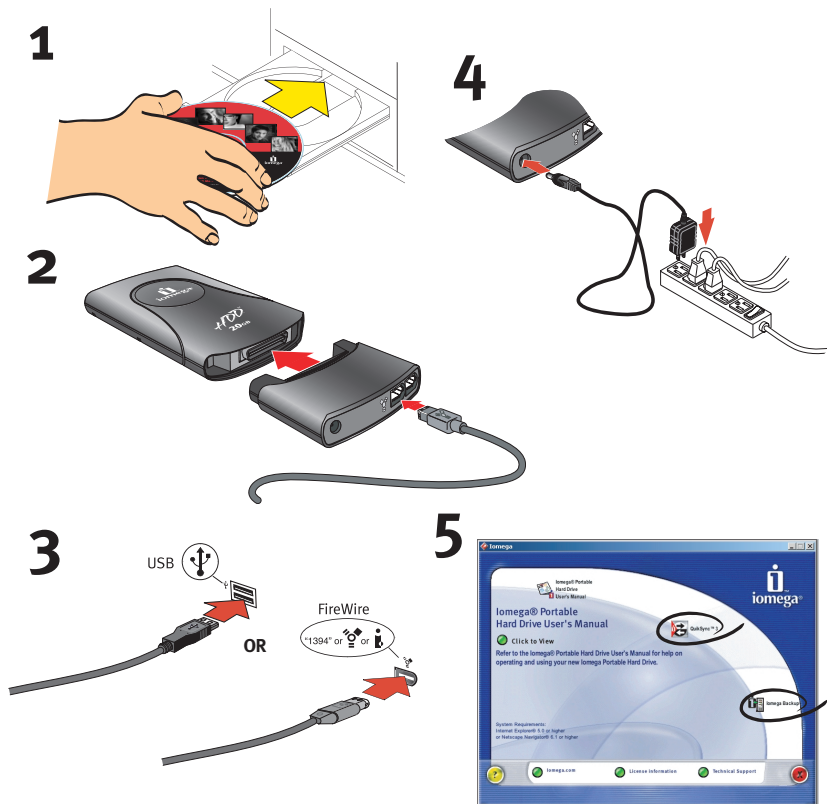


Copyright © 2002 Iomega Corporation. Iomega and the stylized "i" logo, are either registered trademarks or trademarks of Iomega Corporation in the United States and/or other countries. Microsoft and Windows are registered trademarks or trademarks of Microsoft Corporation in the United States and/or other countries. Mac, Macintosh, and FireWire are registered trademarks or trademarks of Apple Computer Inc. in the United States and/or other countries. Certain other product names, brand names, and company names may be trademarks or designations of their respective owners.

30901300 02/25/02 |



USB/FireWire®
Quick Install



Installation Instructions

NOTE: The illustrations may not match your package contents. For detailed installation instructions or troubleshooting information, see the User's Manual on the Installation CD.

1. Start your computer, wait for the operating system to load completely, then insert the installation CD. If the installation does not start automatically, double click on the CD icon. The necessary drivers will automatically be installed. Install the software after you have connected the drive to the computer.
2. Connect the interface module to the drive and then connect the USB or FireWire cable to the interface module.
3. Connect the other end of the USB or FireWire cable to the back of the computer. If you are installing a USB 2.0 drive, your computer must have USB 2.0 ports to achieve top speeds. You will experience slower performance if connected to USB 1.1.
4. Connect the power supply included with your drive. The light on the interface module comes on when it receives power.
FireWire: If the FireWire connection on the computer supplies power, the power supply cable is not necessary.
USB: You must connect a power supply cable for the USB drive to function.
Windows® 98 SE users: If the drive icon does not appear, restart your computer.
5. Click on the software icons and install **QuickSync** and **iomega Backup** software.

Customer Support Options

iomega Web Site

<http://www.iomega.com>

iomega Web Support Site

<http://www.iomega.com/support>

iomega European Web Support Site

<http://www.iomega.com/europe/support>

CE (European Community)

The iomega Portable Hard Drive conforms to the following European Directive(s) and Standard(s): Application of Council Directives: 73/23/EEC, 89/336/EEC. Standards to which Conformity is declared: EN60950, EN55022, EN55024, EN61000-3-2, EN61000-3-3. Importer's Name: iomega Netherlands branch of iomega International, S.A. Type of Equipment: Information Technology Equipment

Manufacturer/Responsible Party

iomega Corporation
 1821 West 4000 South
 Roy, UT 84067 U.S.A.
 801-332-1000