

Epson Revolutionises Projector Market with 3LCD Technology and Leads as World's No.1* Projector Brand for 10 Consecutive Years!

* Based on independent research by Futuresource Consulting

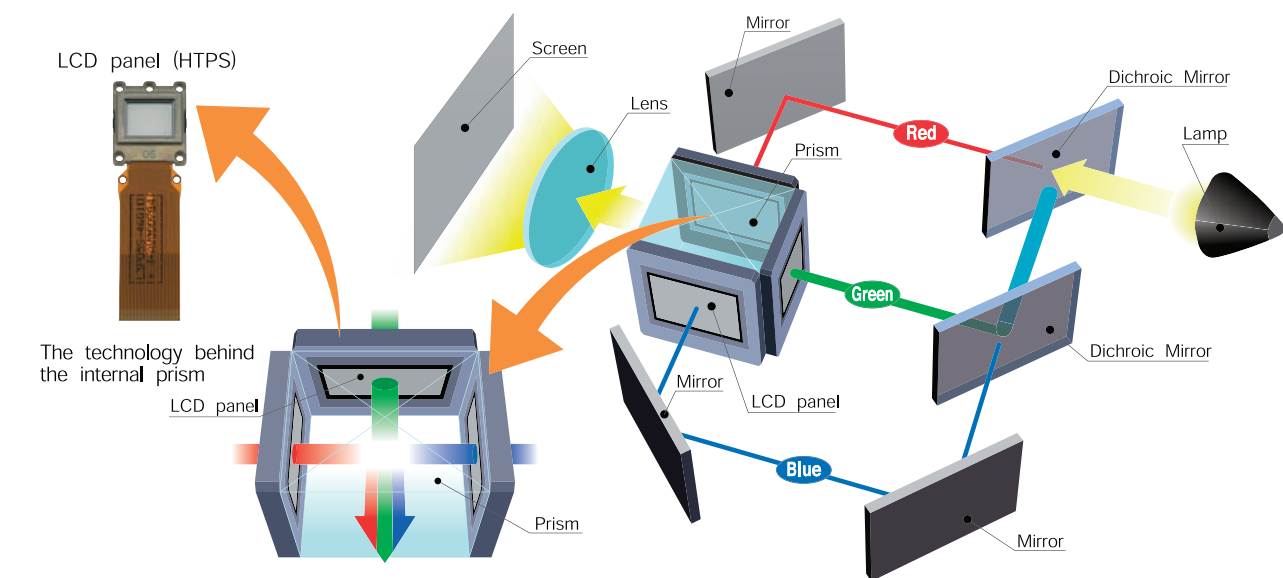
Advantages of 3LCD Projection System

Bright Images and Faithful Colour Reproduction

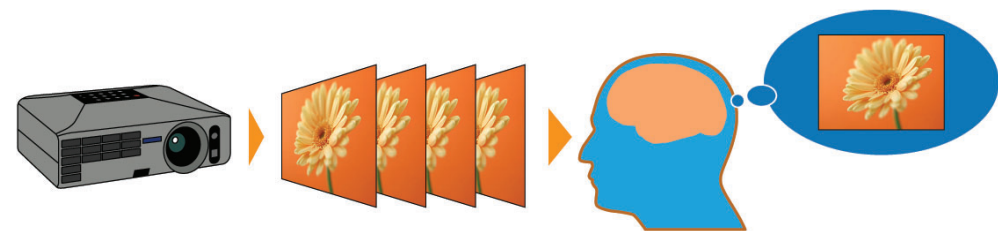
3LCD projectors offer all-time colour (Red, Green and Blue) projection thereby ensuring faithful full colour reproduction. This is suitable for projection of colour intensive images such as videos, photographs and colour charts.

Incredible Details

3LCD projectors are able to produce an unparalleled range of grayscale images, which contributes to delivering incredible colour images that are smooth and seamless.



3LCD projector: RGB are projected at the same time, which makes the single composite image easy on the eyes.



** HTPS (High Temperature Poly-Silicon) is an active matrix transmissive LCD. It is extremely small and produces high-quality images.

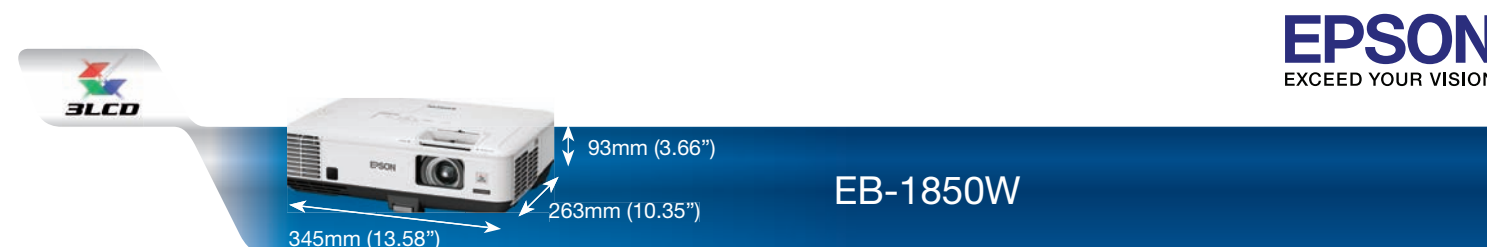
Gentle on the Eyes

3LCD projectors' images do not suffer from colour break-up (commonly known as the rainbow effect). The projections are easy on the eyes as you will not be affected by any distorted pattern.

3LCD projectors use 3 separate LCD panels to form a continuous image containing all colours (red, blue and green) ensuring smooth video playback, even for rapid-motion images.

Reliable Technology

With more than 60 million 3LCD chips shipped to date, the powerful and road-tested 3LCD projection technology is extremely reliable, and is trusted by many throughout to deliver sharp and true-to-life images.



SPECIFICATIONS		
SUPPLIED ACCESSORIES Power Code 1.8m, 3 Wire (Black) Computer Cable 1.8m D-sub 15pin (Male) - (VGA Cable) Remote Control D-sub 15pin (Male) Battery x 2 Yes, with Alkaline AA Password Protect Sticker Attached User's Manual Set CDROM	MODEL NUMBER	EB-1850W
	PROJECTION TECHNOLOGY	RGB liquid crystal shutter projection system (3LCD)
OPTIONAL ACCESSORIES Spare Lamp ELPLP64 Air Filter ELPAF35 Soft Carrying Case ELPKS64	SPECIFICATION OF MAIN PARTS	
	LCD	SIZE 0.59" without MLA (D8) NATIVE RESOLUTION WXGA (1280 x 800) PROJECTION LENS TYPE Optical Zoom (Manual) / Focus (Manual) F-NUMBER 1.51 - 1.99 FOCAL LENGTH 18.2mm - 29.2mm ZOOM RATIO 1 - 1.6 THROW RATIO 1.38 - 2.24 (Wide - Tele)
PERIPHERALS Portable USB Document Camera ELPDC06 Desktop Document Camera ELPDC11 Epson Interactive Unit ELPIU01	LAMP	TYPE 275W UHE (E-TORL) LIFE (NORMAL/ECO) 3,000 hours / 4,000 hours
	SCREEN SIZE (PROJECTED DISTANCE) 29" - 280" [0.84m - 8.4m] (Zoom: Wide) 29" - 280" [1.36m - 13.9m] (Zoom: Tele)	
EB-1850W 	BRIGHTNESS	COLOUR LIGHT OUTPUT 3,700lm WHITE LIGHT OUTPUT (NORMAL/ECO) 3,700lm / 2,960lm
	CONTRAST RATIO	2,500:1
EB-1850W 	INTERNAL SPEAKER	SOUND OUTPUT 10W Monaural
	KEYSTONE CORRECTION	VERTICAL/HORIZONTAL ANGLE ±30° / ±30° (Zoom: Tele) AUTO KEYSTONE CORRECTION Yes (Vertical: ±30°)
EB-1850W 	CONNECTIVITY	ANALOG INPUT D-SUB 15PIN 2 (Blue) COMPOSITE RCA x 1 (Yellow) S-VIDEO 1 Mini-DIN
	DIGITAL INPUT	HDMI 1
EB-1850W 	OUTPUT TERMINAL	D-SUB 15PIN 1 (Black)
	AUDIO INPUT	RCA (WHITE/RED) 1 pair STEREO MINI-JACK 2
EB-1850W 	AUDIO OUTPUT	STEREO MINI-JACK 1
	OTHERS	USB TYPE A 1 (ELPDC06 / USB Memory) USB TYPE B 1 (USB Display / Mouse / Control)
EB-1850W 	CONTROL I/O	RS-232C D-sub 9pin x 1
	NETWORK	WIRED LAN N/A WIRELESS N/A
EB-1850W 	OPERATING TEMPERATURE	BELOW 1,500M / 4,921FT 5°C - 35°C <41°F - 95°F> (20% - 80% humidity, unfrozen)
	OPERATING ALTITUDE	0m - 2,286m <0ft - 7,500ft> (over 1,500m / 4,921ft: with high altitude mode)
EB-1850W 	DIRECT POWER ON/OFF	Yes
	START-UP PERIOD	8 seconds
EB-1850W 	COOL-DOWN PERIOD	Instant Off
	AIR FILTER	TYPE Normal
EB-1850W 	MAINTENANCE CYCLE	2,000 hours When used in the general office environment (the amount of floating dust: 0.04 - 0.2 mg / m3). Based on Epson's in-house test results.
	POWER SUPPLY VOLTAGE	100V - 240V AC +/- 10%, 50Hz / 60Hz
EB-1850W 	POWER CONSUMPTION (220V - 240V)	LAMP ON (NORMAL/ECO) 363W / 297W STANDBY (NETWORK ON/OFF) 3.7W / 0.33W
	DIMENSIONS EXCLUDING FEET (D X W X H)	263mm x 345mm x 93mm (10.35" x 13.58" x 3.66")
EB-1850W 	WEIGHT	Approx. 3.35kg / 7.38lbs
	FAN NOISE (NORMAL/ECO)	39dB / 35dB

Epson Singapore Pte Ltd
1 HarbourFront Place #03-02
HarbourFront Tower One
Singapore 098633
Tel: (65) 6586-5500 Fax: (65) 6271-9755

Epson Customer Care Centre
108 Pasir Panjang Road
#04-08 Golden Agri Plaza
Singapore 118535
Epson Helpdesk @ (65) 6586-3111

Sales Enquiries
6586 3111

www.epson.com.sg

Information correct at time of printing.

Printed in November 2011



Official Partner
of Manchester United

MULTIMEDIA PROJECTOR EB-1850W EB-1860/1880



Full projector features at your fingertips for impressive office and classroom presentations



Epson's versatile projectors harness the latest 3LCD technology to deliver impeccable, high-quality images and sounds. This projector series is packed with all the functions and features you need for powerful office and school presentations.

- Bright and capable**
With both power and capability in one compact package, you can make clear and effective presentations every time
- Experience added convenience**
With the 3-in-1 USB display, you gain easy access to control, image and sound transmission without messy cabling
- Enjoy versatility of use**
With the first-ever sliding Horizontal Keystone Adjuster and the automatic vertical keystone detector and adjustment, presentation set-up is made fast and easy, even for beginners



SPECIFICATIONS				
SUPPLIED ACCESSORIES Power Code 1.8m, 3 Wire (Black) Computer Cable 1.8m D-sub 15pin (Male) - (VGA Cable) Remote Control Yes, with Alkaline AA Battery x 2 Bundled Software CDROM Projection Software Ver 1.01d (EB-1880) Password Protect Sticker Attached User's Manual Set CDROM	MODEL NUMBER	EB-1860		EB-1880
	PROJECTION TECHNOLOGY	RGB liquid crystal shutter projection system (3LCD)		
	SPECIFICATION OF MAIN PARTS			
	LCD	SIZE	0.63" without MLA (D7)	
		NATIVE RESOLUTION	XGA (1024 x 768)	
	PROJECTION LENS	TYPE	Optical Zoom (Manual) / Focus (Manual)	
		F-NUMBER	1.51 - 1.99	
		FOCAL LENGTH	18.2mm - 29.2mm	
		ZOOM RATIO	1 - 1.6	
		THROW RATIO	1.38 - 2.24 (Wide - Tele)	
OPTIONAL ACCESSORIES Spare Lamp ELPLP64 Air Filter ELPAF35 Quick Wireless Connection USB Key Soft Carrying Case ELPKS64	LAMP	TYPE	275W UHE (E-TORL)	
		LIFE (NORMAL/ECO)	3,000 hours / 4,000 hours	
	SCREEN SIZE (PROJECTED DISTANCE)	30" - 300" [0.84m - 8.4m] (Zoom: Wide) 30" - 300" [1.36m - 13.9m] (Zoom: Tele)		
	BRIGHTNESS			
	COLOUR LIGHT OUTPUT	4,000lm		
	WHITE LIGHT OUTPUT (NORMAL/ECO)	4,000lm / 3,200lm		
	CONTRAST RATIO	2,500:1		
	INTERNAL SPEAKER			
	SOUND OUTPUT	5W Monaural		10W Monaural
	PERIPHERALS Portable USB Document Camera ELPDC06 Desktop Document Camera ELPDC11 Epson Interactive Unit ELPIU01	KEYSTONE CORRECTION		
VERTICAL/HORIZONTAL ANGLE		±30° / ±30° (Zoom: Tele)		
AUTO KEYSTONE CORRECTION		Yes (Vertical: ±30°)		
CONNECTIVITY				
ANALOG INPUT		D-SUB 15PIN	1 (Blue)	2 (Blue)
		COMPOSITE	RCA x 1 (Yellow)	
		S-VIDEO	1 Mini-DIN	
DIGITAL INPUT		HDMI	N/A	1
OUTPUT TERMINAL		D-SUB 15PIN	N/A	1 (Black)
 EB-1860  EB-1880		AUDIO INPUT	RCA (WHITE/RED)	1 pair
		STEREO MINI-JACK	N/A	
	AUDIO OUTPUT	STEREO MINI-JACK	N/A	
	OTHERS	USB TYPE A	N/A	
		USB TYPE B	1 (USB Display / Mouse / Control)	
	CONTROL I/O	RS-232C	D-sub 9pin x 1	
	NETWORK	WIRED LAN	N/A	RJ45 x 1 (10/100Mbps)
		WIRELESS	N/A	
	OPERATING TEMPERATURE			
	BELOW 1,500M / 4,921FT	5°C - 35°C <41°F - 95°F> (20% - 80% humidity, unfrozen)		
OPERATING ALTITUDE				
0m - 2,286m <0ft - 7,500ft> (over 1,500m / 4,921ft: with high altitude mode)				
DIRECT POWER ON/OFF	Yes			
START-UP PERIOD	8 seconds			
COOL-DOWN PERIOD	Instant Off			
AIR FILTER				
TYPE	Normal			
MAINTENANCE CYCLE	2,000 hours When used in the general office environment (the amount of floating dust: 0.04 - 0.2 mg / m³) Based on Epson's in-house test results.			
POWER SUPPLY VOLTAGE	100V - 240V AC +/- 10%, 50Hz / 60Hz			
POWER CONSUMPTION (220V - 240V)				
LAMP ON (NORMAL/ECO)	356W / 289W		363W / 297W	
STANDBY (NETWORK ON/OFF)	N/A / 0.33W		4.3W / 0.33W	
DIMENSIONS EXCLUDING FEET (D X W X H)	263mm x 345mm x 93mm (10.35" x 13.58" x 3.66")			
WEIGHT	Approx. 3.30kg / 7.25lbs		Approx. 3.35kg / 7.38lbs	
FAN NOISE (NORMAL/ECO)	39dB / 35dB			

EPSON and EXCEED YOUR VISION are registered trademarks of Seiko Epson Corporation.

All other product names and other company names used herein are for identification purposes only and are the trademarks or registered trademarks of their respective owners.

EPSON disclaims any and all rights in those marks. Projected images shown herein are simulations. The actual product design and contents may vary. Specifications are subject to change without notice.

Epson Singapore Pte Ltd
1 HarbourFront Place #03-02
HarbourFront Tower One
Singapore 098633
Tel: (65) 6586-5500 Fax: (65) 6271-9755

Epson Customer Care Centre
108 Pasir Panjang Road
#04-08 Golden Agri Plaza
Singapore 118535
Epson Helpdesk @ (65) 6586-3111

Sales Enquiries
6586 3111

www.epson.com.sg

Information correct at time of printing.

Printed in November 2011



Official Partner
of Manchester United

Epson's versatile projectors harness the latest 3LCD technology to deliver impeccable, high-quality images and sounds. This projector series is packed with all the functions and features you need for powerful office and school presentations.

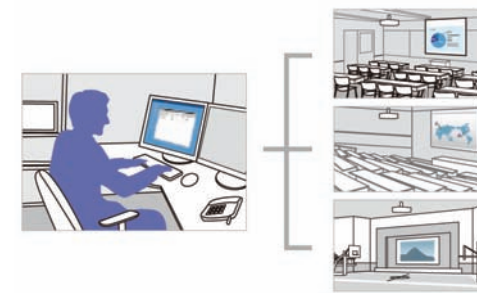
EB-1850W
EB-1860/1880

BRIGHT AND CAPABLE

No more fumbling with room switches and drawing of curtains, only to have your audience squint to see the faint screen. This versatile and compact projector has a high 4000lm brightness, so you no longer have to dim the lights for your audience of 50 to 60 to enjoy crisp, vivid images.



Enjoy Complete Monitoring and Control*

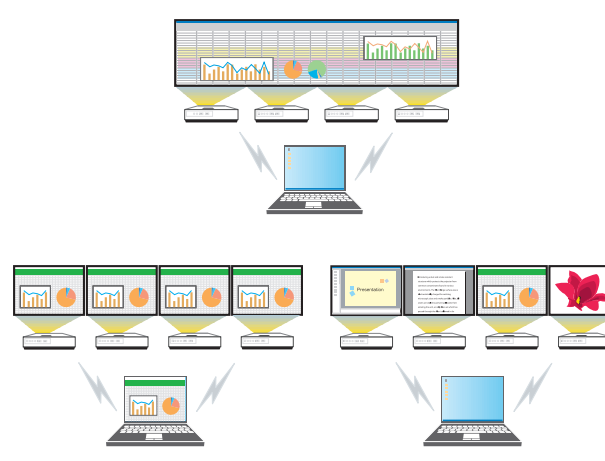


Easy MP Monitor
With Easy MP Monitor, Epson's proprietary network monitoring software, you can easily monitor all your projectors and keep them running efficiently, even across the largest networks. Remotely configure and programme email alerts for pre-defined critical indicators such as non-functioning devices or overheating lamps.

Message Broadcasting
Now you can send messages or announcements as jpeg files simultaneously to any number of projectors on a network. This makes the projector series very useful for immediate communication needs or even emergencies.

Multi-Screen Display*

Epson's unique Multi-Screen Display feature presents broad spreadsheets or panoramic images. Show four different images at the same time or one single image across the breadth of four screens. The Multi-Screen Display presentation can be controlled via a single computer with just a remote control.

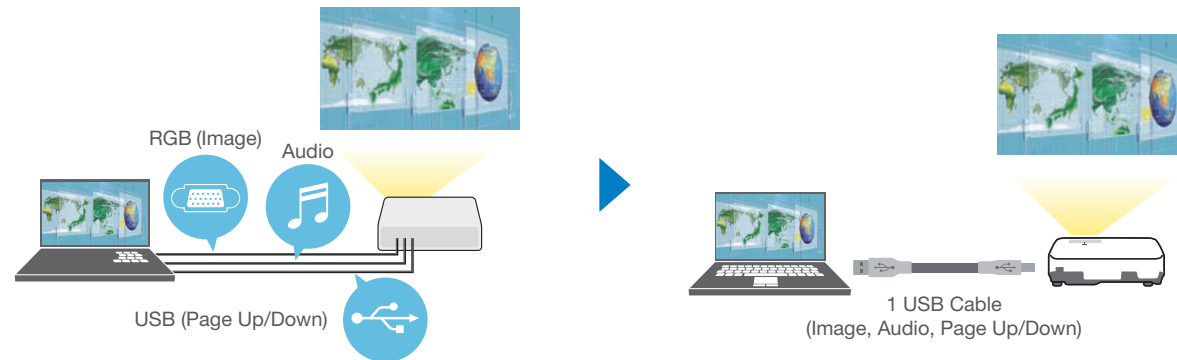


Experience the flexibility of projecting the different presentation simultaneously or as one single image (panoramic view) across the breath of four screens.

* For EB-1880 only.

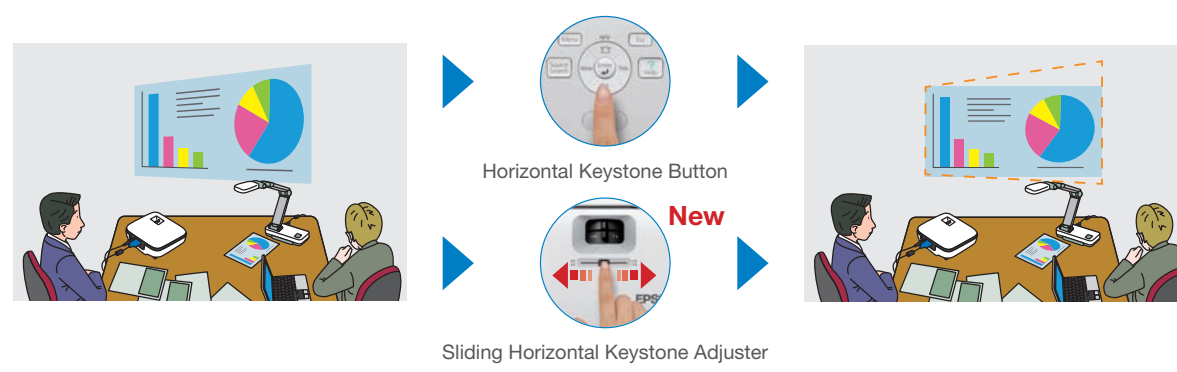
EXPERIENCE ADDED CONVENIENCE

Designed to better assist the way you present or teach, this series features a 3-in-1 USB display. This allows control, image and sound transmission from a computer to the projector via a USB cable, eliminating the need for complicated cabling. A built-in speaker also allows you to enjoy powerful sound without the need of connecting a separate speaker.



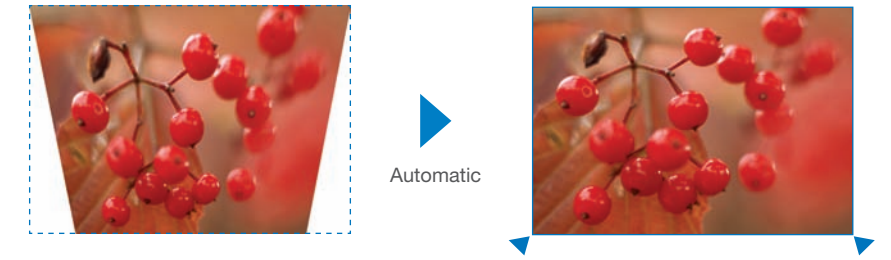
ENJOY VERSATILITY OF USE

Deliver powerful presentations anywhere in the room. With the easy-to-use sliding Horizontal Keystone Adjuster*, screen corrections can be done quickly, easily and accurately, for both beginners and experienced users.



* For EB-1880/1850W only. EB-1860 comes with Horizontal Keystone Button.

With automatic vertical keystone detection and adjustment, there is no longer any need for awkward and time-consuming manual image adjustments that interrupt the smooth flow of your presentation delivery. This handy feature automatically detects the projector's vertical keystone distortion and corrects it instantly.



MAXIMISE PRESENTATION VERSATILITY

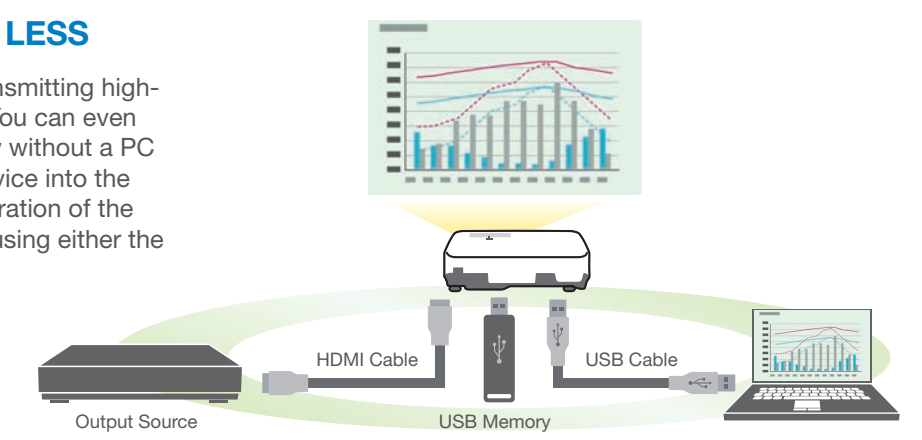
Achieving perfect images even if the projector is off-set from the screen is now possible. Epson's Quick Corner feature allows you to independently adjust any of the four corners of the projected image that has no parallel sides. With an incredible angle adjustment range, you are assured of impressive presentations from any point in the room.



ACCOMPLISH MORE WITH LESS

The built-in HDMI terminal* makes transmitting high-quality images and sounds possible. You can even view a jpeg, bmp, png or gif slideshow without a PC by simply inserting a USB memory device into the USB connection on the projector. Operation of the projector is also made convenient by using either the remote control or the operation panel.

* For EB-1880/1850W only.



CONNECT DIRECTLY TO A DOCUMENT CAMERA

This projector series conveniently connects directly to Epson's Portable Document Camera ELPDC06 via a USB cable without a computer, revolutionising the way you present. Simply place the presentation material under the camera and enlarge the projection according to the desired size – perfect for classroom and office discussions.



CLEVERLY POSITIONED EXHAUST ELIMINATES DISTRACTION

The exhaust is intelligently positioned in the front, preventing anyone from being exposed to the hot exhaust, especially when on a narrow table. This enables the audience seated at the side or back of the projector to fully concentrate on the presentation.



Eco Features

- Equipped with an E-TORL lamp engineered to maximise light usage efficiency
- Uses just 0.33W of power in standby mode
- Projector optics employ lead-free lenses
- Unpainted plastic housing reduces the environment impact
- The flame retardants used in the plastic housing do not contain chlorine or bromine

Better Products for a Better Future™
For more information on Epson's environmental programmes, visit www.epson.com/environment

PARTNERS IN PERFECTION

Ultraportable Document Camera ELPDC06
Easily portable; 0.96 kg/2.11 lbs
1.92 megapixels with 15 fps
4x digital zoom
USB powered

Desktop Document Camera ELPDC11
2.2 kg/4.85 lbs
5 megapixels with 30 fps
10x digital zoom
Bundled with microscope adaptor

Interactive Unit ELPIU01
USB powered
Easy interactive function
Simple and easy set-up

Colour Light Output

- an easy way to evaluate projector colour output

What is Colour Light Output?

Colour Light Output (CLO) is a specification that provides critical information on a projector's ability to deliver colour. Developed by colour scientists using the same approach as White Light Output (Brightness) measurement, Colour Light Output provides the buyer with additional key information about colour.

Does Brightness measure colour?

No. Current product specifications such as Brightness (or White Light Output), Contrast Ratio and Resolution give no information regarding a projector's ability to reproduce colour. The existing Brightness specification only measures the total amount of White Light projected. It does not measure colour – in fact, many manufacturers artificially boost brightness by adding white light, which dilutes the projector's colour brightness.

Why is Colour Light Output important?

Colour Light Output is critically important because it measures the brightness of Red, Green and Blue. Red, Green and Blue create white when combined in the right proportions. They also comprise the input signal that tells your projector how to reproduce colour images. Beautifully balanced colour is possible when bright Red, Green and Blue combine to produce the brightness equal to White. Colour Light Output provides users with an additional way to evaluate a projector and make more discerning buying decisions.

Is Colour Light Output the same in all projectors?

No. There are vast differences in the Colour Light Output of projectors on the market today. Look at the images below from two competing projectors

3LCD Projector

Image #1*

Image #2*

Brand X

Image #1*

Image #2*

How is Colour Light Output measured?

X	X	X
X	X	X
X	X	X

Brightness (or White Light Output) measures the total amount of white light projected in lumens on a nine point grid. It does not measure colour.

Red	Blue	Green
X	X	X
Green	Red	Blue
X	X	X
Blue	Green	Red
X	X	X

Colour Light Output uses 3 sets of a nine-point grid to measure the primary colours – red, green and blue, using the same approach used to measure White Light Output in lumens.

How should Colour Light Output be used?

Colour Light Output should be used with White Light Output to provide insight into a projector's overall picture quality. Two things to remember:

- Select High Colour Light Output.
- Make sure the Colour Light Output equals the White Light Output.

3LCD Projector
High CLO

White Light Output

Colour Light Output

2200 Lumens
=
2200 Lumens

Brand X
Low CLO

White Light Output

Colour Light Output

2200 Lumens
≠
800 Lumens

When selecting a projector, ask for the Colour Light Output measurement.

Colour Light Output specification describes the difference in colour between these two projectors.

* Actual photographs of images produced by 2 competing projectors run in default mode. Price, Resolution and Brightness (White Light Output) are the same for both projectors.