

Tiger A series T8 LED Tube

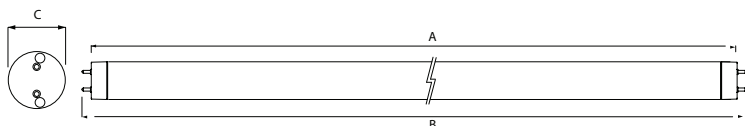
Installation Guide



General (Lighting Fixture)


Operating Input Voltage	220 – 240 Vac, 50 - 60Hz
Power Factor	>0.9
Color Temperature	2500K - 3500K (Warm White) 3500K - 4500K (Cool White) 6000K - 7000K (Daylight)
Type Of LED	SSL Class Low Power 3020 LEDs
Operating Temperature	0 to 40 °C
Storage Temperature	-40 to 80 °C
Operating Humidity	>90% (RH)
Cap Base	G13

Tube Dimensions

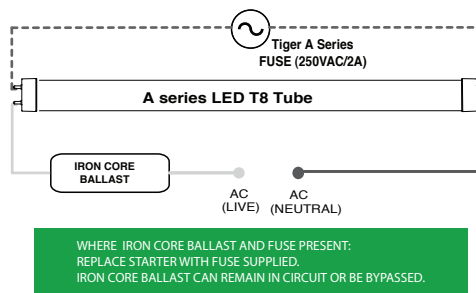
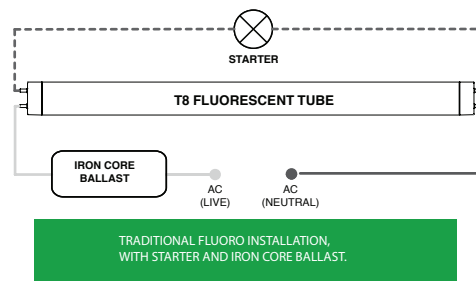


Model	Tube Length	Dim A (Max)	Dim B	Dim C
A0600	600mm - 3FT	589mm	603mm	27mm
A1200	1200mm - 4FT	1199mm	1213mm	27mm
A1500	1500mm - 5FT	1500mm	1514mm	27mm

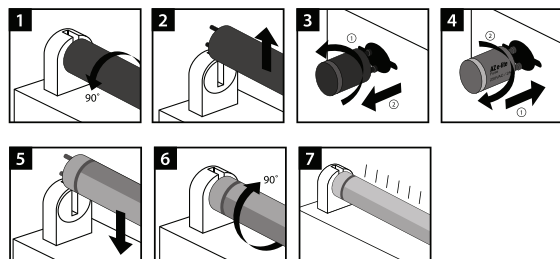
General notes before installation:

- Turn power off before installing the tube carefully according to these directions.
- Ensure that the tube is installed securely into the fixture, in the same way as a traditional fluorescent tube.
- Do not install near hot or flammable objects.
- Do not install the product on uneven or oblique surfaces, as the tube must not be bent. 
- The rated voltage is 220V~240V. Do not use in supply voltage exceeding 240V.
- In case of operational failure, please switch off power and contact your nearest Tigerlight dealer.

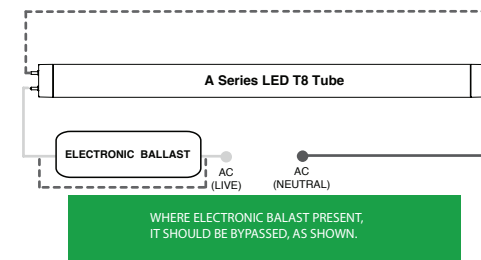
Wiring Diagram - Traditional fluorescent tube retrofit



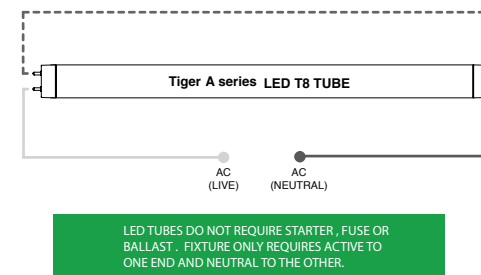
Installation illustrations:



Wiring Diagram - Electronic ballast present



Wiring Diagram - New Installation



Wiring Diagram (Parallel)

