

The logo for Altwell, featuring the word "Altwell" in a serif font. A thin, light-colored diagonal line is positioned behind the letter "A", extending from the top left to the middle of the letter.

# UW-0810 USER MANUAL

**Altwell**



Altwell

# USER MANUAL

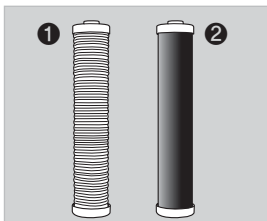
## UW-0810



### CONTENTS

1. CHARACTER .....	03
2. COMPONENTS .....	04
3. SPECIFICATION .....	05
4. FILTER SPECIFICATIONS .....	06
5. INSTALLATION AND PRECAUTIONS .....	07
6. INSTALLATION GUIDELINES .....	08
7. FILTER REPLACEMENT .....	10
8. TROUBLE SHOOTING .....	11

# 1. CHARACTER

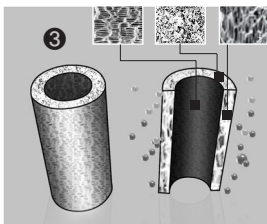


## 1 Sediment filter

Sediment filter removes suspended solids such as rust residues, mud, and sand larger than  $5\mu\text{m}$ .

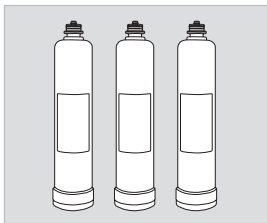
## 2 Carbon block filter

Carbon block filter made with compressed activated carbon. The micro pores of filter remove suspended solids, residual chlorine. Unpleasant taste and odor and heavy metals.



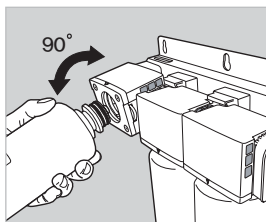
## 3 Ultrafiltration membrane

The ultrafiltration membrane removes bacteria and provides microbiological safe and clean drinking water for you and your family.



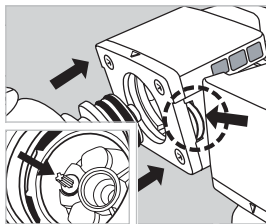
## Encapsulated filter

Encapsulated filters allow a clean and safe filtration process without contamination from the outside. The high quality filter media allow for an extraordinary clean and safe filter performance.



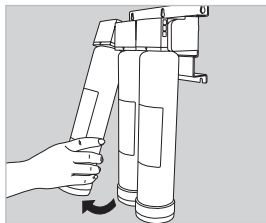
## Filter replacement

Filter cartridges are easy to change. The rotation system allows the filter change without using any tool. No plumber or expert is needed.



## Automatic water shut off

The filter system has an integrated automatic water stop. As soon as the filter is plugged off the adapter the water flow will shut off automatically.

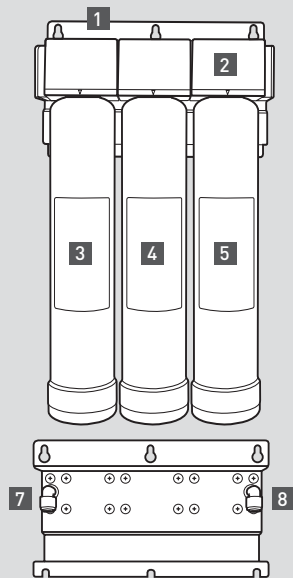


## Clip function- space saving

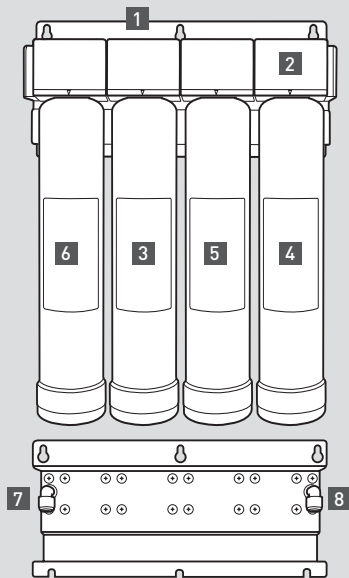
Because of the clip function of the filter system there is no extra space needed for under the sink installation. The filter can be easily changed.

## 2. COMPONENTS

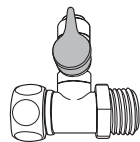
### UW-0810



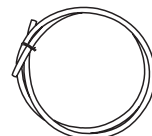
### UW-0820



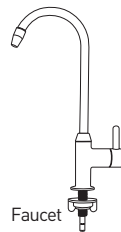
### ACCESSORIES



Ø 1/4" Adapter



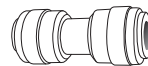
Hose



Faucet



User manual



Ø 1/4" Fitting



M4 x 16Trust screw

- |   |                          |   |                 |
|---|--------------------------|---|-----------------|
| 1 | Bracket                  | 5 | UF filter       |
| 2 | Module                   | 6 | Sediment filter |
| 3 | Pre-Carbon block filter  | 7 | Outlet fitting  |
| 4 | Post-Carbon Block filter | 8 | Inlet fitting   |

### 3. SPECIFICATION

Model		UW-0810		UW-0820	
Purification System		Ultra Filtration			
Operating Pressure		1-4 bar			
Operating temperature		4-35°C			
Flow rate		1.5L/min(1kgf/cm <sup>2</sup> )			
Color		All Color available			
Life Time	1 <sup>st</sup>	Pre-Carbon block Filter	4months or 1,440L	Sediment Filter	4months or 1,440L
	2 <sup>nd</sup>	Post-Carbon block Filter	8months or 2,880L	Pre-Carbon block Filter	8months or 2,880L
	3 <sup>rd</sup>	UF Filter	1Year or 4,320L	UF Filter	1Year or 4,320L
	4 <sup>th</sup>			Post-Carbon block Filter	1Year or 4,320L

\* The service life time will depend on the period of usage and the water quality

\* It is based on the consumption of 12L per day

## 4. FILTER SPECIFICATIONS

### 1<sup>st</sup> Filter (5 $\mu$ m)

This stage removes dirt and other minute impurities - particles that are 15 times smaller than a grain of sand.

### 2<sup>nd</sup> Filter (1 $\mu$ m)

This filter is high quality solid type carbon filter.

This stage removes chemicals like chlorine and other organic substances.

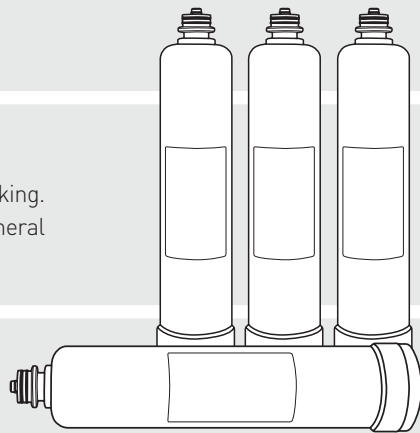
### 3<sup>rd</sup> Filter (0.01~0.1 $\mu$ m)

Physically removes pathogenic germs thereby providing you with healthy water for drinking.

This filter removes all alien substances smaller than 0.01 ~ 0.04 microns including general bacteria and colitis germs, but passes through healthy minerals.

### 4<sup>th</sup> Filter (1 $\mu$ m)

The filter removes unpleasant odors and makes water taste better and control bacterial multiplication.



## 5. INSTALLATION AND PRECAUTIONS

Altwell



The water filter can only be used with Pre-filtered water from a water supply facility. The filter cannot be used with water from unsafe water sources such as rivers and wells.

**1 - 4  
BAR**

To reach an optimized and satisfying filter result the water filter should only be installed in houses with a pipe pressure between 1 and 4 bar.



The water filter must be installed away from inflammable materials and heating sources to avoid deformation.



The water filter should only be installed inside the house.



The filter can only be installed to the cold water supply with a water temperature between 4 and 35°C.



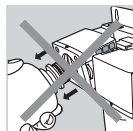
Replace the filters according to the schedule in order to insure clean drinking water.



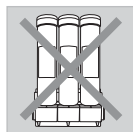
The water filter should not be exposed to force or shock.



The water filter must be kept away or protected from direct light (e.g. sunlight).



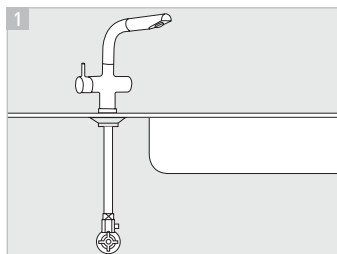
Never replace for filter during water flow. The equipment may break down due to high pressure. For filter exchange close the Ø1/4" adapter



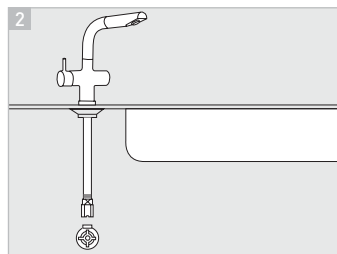
Please install the filter upright. In case of moving or raising the filter make sure that the module upright



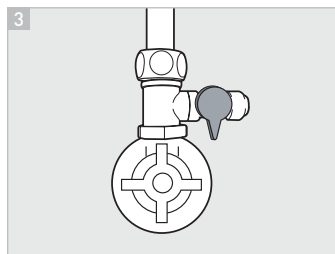
## 6. INSTALLATION GUIDELINES



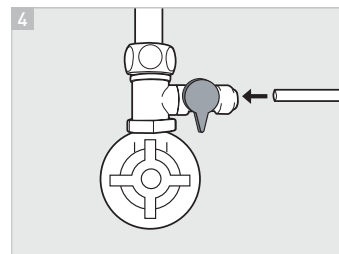
1 Lock the valve of the cold water supply line.



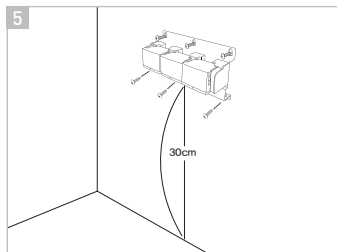
2 Detach the metal hose from the cold water supply under the sink.



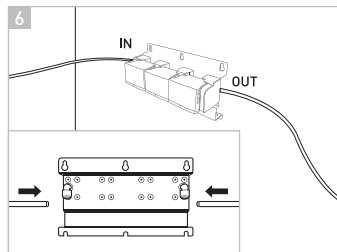
3 Assemble Ø1/4" adapter to the water supply



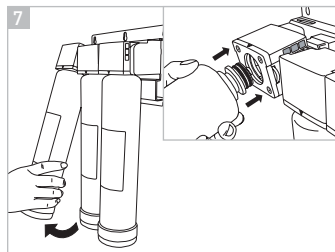
4 Connect the plastic tube to the Ø1/4" adapter



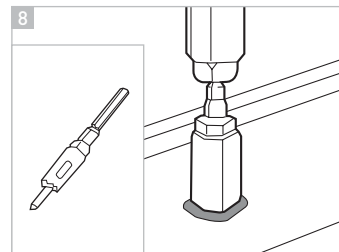
5 Select a proper place for under the sink that has at least 30cm from the floor. Make holes into the wall to fix the module under the sink



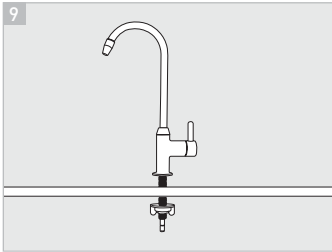
6 Insert the plastic tube and connect the module on the wall.



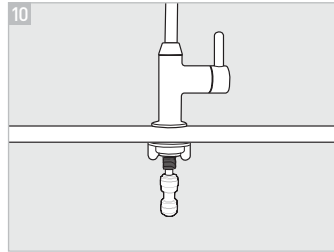
7 Connect the filter and bring the filter back in the normal Position.



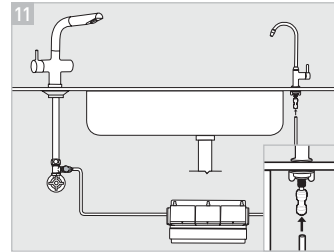
8 Select a proper place for the faucet. Drill a placement hole into the sink



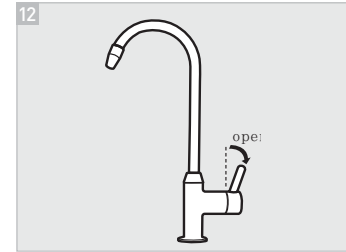
Insert the base washer to the screw beneath the faucet's main body and insert the faucet to the hole.



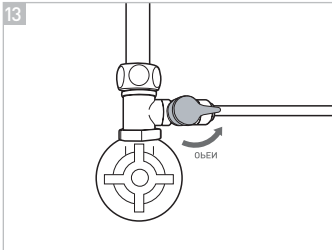
Connect the fitting to the faucet



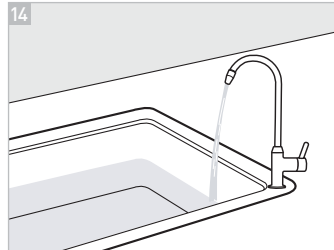
Connect the outlet tube with the drinking water faucet connector



Before operating the system open the faucet

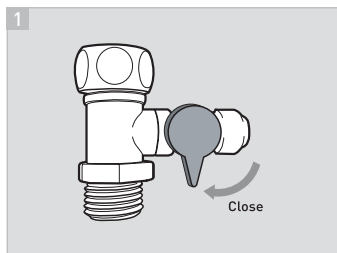


Open the valve of  $\varnothing 1/4$ " adapter



If there is no installation mistake or leakage letting water pass through it sufficiently (about more than 10min.) in order to remove air inside the unit fully

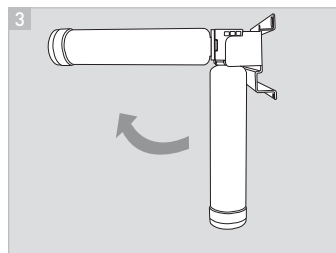
## 7. FILTER REPLACEMENT



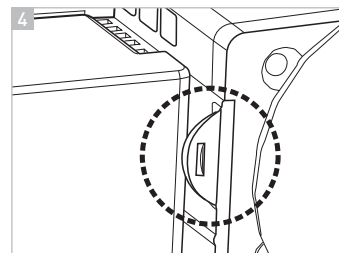
1 Close the  $\varnothing 1/4$ " adapter under the sink



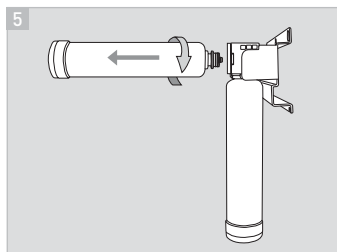
2 Open the faucet to release the pressure in the system



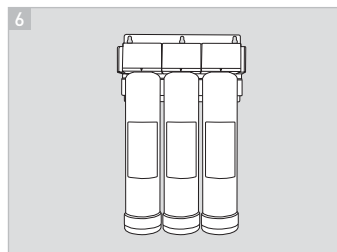
3 Rotates the module and filter to user side(Max. 90 degree)



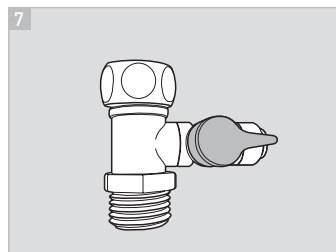
4 Check for the working as Above picture 4 (If it is not working, rotate The filter to right and left)



5 Turns the filter with a right and left, and than pulls the filter



6 New filter installation is reverse way of disassembly.



7 Open the  $\varnothing 1/4$ " adapter for 10minutes to bring residual particles an air out of the unit.

## 8. TROUBLE SHOOTING

Problems	Possible cause	Trouble shooting
<b>Black color or black particles in the water</b>	The stream water filter contains carbon powder. After installation small particles can occur in the water	After installation or filter exchange let the water flow for about 10 minutes to clean the filter from small residual particles of carbon.
<b>Slow water flow</b>	The lifetime of the filter is finished.	Replace the filter cartridge.
	The filter is clogged.	Replace the filter cartridge.
<b>Noise in the system</b>	There are air bubbles in the system	After installation let the water flow for about 10minutes to remove all air from the system.
<b>Unusual water or chlorine taste/bad odor</b>	The cartridge does not remove chlorine and other contaminants from the water. The life time of the filter cartridge is finished.	Replace the filter cartridge.
	You have not used the filter for a while and some sediments and contaminants turn into developed a bad smell in the system.	Open the valves and let the water flow for at least 5minutes.
<b>Water leakage</b>	Tubes, fittings, nipples might not be connected properly.	Check every connection to be inserted in the proper depth.
<b>No water flow</b>	The diverter valve is closed.	Open the diverter valve.