

**UK** Subject to change

**Document Ref:**  
**FVM-250/18957/PMR18/issue I/Mar 02**

**Copyright ©**  
These instructions are the sole property of Ferm-Omega Tools and may not be reproduced

**USER'S MANUAL**

***Ferm Orbital Sander***

***FVM-250***

CE



**Ferm<sup>®</sup>**

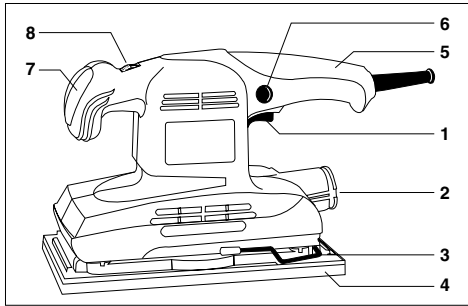
Art.nr. 719270  
Screwfix Art.nr. 18957

**FVM-250 ORBITAL SANDER  
USERS MANUAL**

**TECHNICAL SPECIFICATIONS**

Voltage	230 V~
Frequency	50 Hz
Power input	280 W
No load speed	6000-10000/min.
Sand base dimensions	115 x 230 mm
Weight	2,1 kg
L <sub>pa</sub> (sound pressure)	84,7 dB(A)
L <sub>wa</sub> (sound power)	97,7 dB(A)
Vibration value	6,9 m/s <sup>2</sup>


**PRODUCT INFORMATION**




- 1. On/off switch
- 2. Dust collection opening
- 3. Paper clamp
- 4. Sanding sole
- 5. Handle (behind)
- 6. Blocking switch
- 7. Handle (front)
- 8. Adjusting wheel

**SAFETY INSTRUCTIONS**


The following pictograms are used in these instructions for use:

 Denotes risk of personal injury, loss of life or damage to the tool in case of non-observance of the instructions in this manual.

 Denotes risk of electric shock.

Carefully read this manual before using the machine. Make sure that you know how the machine functions and how to operate it. Maintain the machine in accordance with the instructions to make sure it functions properly. Keep this manual and the enclosed documentation with the machine.

Ferm products are manufactured to high quality standards they are safe and fit for purpose at time of sale, but all tools can be dangerous if the correct precautions are not taken. Always follow these instructions, do not carry out the operation until you are sure you can do so in safety. Remember to consider the work environment for safe operation as well as safety for tool use.

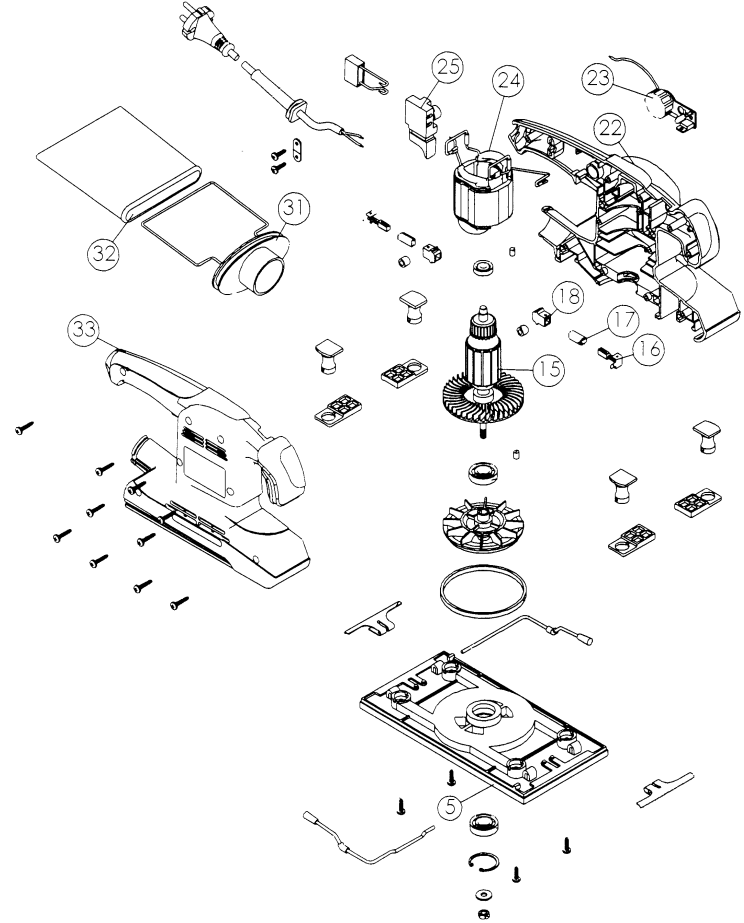
 **Warning!** When using electric tools, basic safety precautions should always be followed to reduce the risk of fire, electric shock and personal injury. Read all these instructions before attempting to operate this product. Save these instructions for future reference.

**PERSONAL SAFETY**  
**Use Personal Protection Safety Equipment**  
Protect eyes with safety glasses or goggles note: the use of safety protective eyewear without the CE mark can lead to serious injury if the lens breaks. A suitable dust mask should be worn if cutting, drilling or sanding is dusty, in particular chipboard or MDF. Approved safety footwear and headgear should worn as appropriate, for example on building works or when heavy weights are involved. Wear suitable gloves and apron to protect against sparks/debris. Wear earplugs or ear defenders.

**Dress properly**  
Do not wear loose clothing or jewellery. It can get caught in moving parts. Non-skid footwear is recommended when working out doors. Wear protective hair covering to contain long hair

**Stay alert**  
Watch what you are doing Use common sense. Do not operate tools when tired or after taking alcohol or prescription/ non-prescription drugs.

**EXPLODED VIEW**



**SPARE PARTS LIST FVM-250**

REF NR	DESCRIPTION	FERM NR
5	BASE PLATE	408242
15	ROTOR	408254
16 + 17 + 18	CARBON BRUSH + HOLDER COMPLETE	408245
22 + 33	HOUSING COMPLETE	408241
23	PRINT CIRCUIT BOARD	408248
24	STATOR	408244
25	SWITCH	408247
31 + 32	DUST BAG COMPLETE	408249

## GUARANTEE

The guarantee conditions can be found on the separately enclosed guarantee card.

## CE DECLARATION OF CONFORMITY (UK)

We declare under our sole responsibility that this product is in conformity with the following standards or standardized documents

**EN50144-2-4, EN50144-1, EN55014-1,  
EN55014-2, EN61000-3-2, EN61000-3-3**

in accordance with the regulations

**98/37/EEC  
73/23/EEC  
89/336/EEC**

from 01-07-2000  
**GENEMUIDEN NL**  
W. Kamphof  
Quality department



## OPERATIONAL SAFETY



**Warning!** Be aware this sander can produce fine dust, which can be hazardous to your health.

*Some older painted surfaces may contain harmful lead. Clean the area and tool thoroughly after sanding. Always use a suitable mask, eye protection, gloves and use dust extraction during sanding and cleaning.*

### Concentrate

Routine and repetition can lead to mistakes. Remember that a slight lack of concentration can result in serious injuries in a split second.

### Keep work area clean

Cluttered areas and benches invite injuries.

### Consider the work environment

Do not expose power tools to rain or use them in damp or wet locations. Keep work area well lit. Do not use power tools in the presence of flammable liquids, vapours or gases.

### Guard against electric shock

This unit contains dangerous voltages. Use a RCD (residual current device) to provide protection against electrical shock. Prevent body contact with grounded surfaces (e.g. pipes, radiator, ranges or refrigerators).

### Keep children and pets away

Do not let children or pets come into contact with the tool, extension cable or work area.

### Do not force the tool

It will work better and safer at the rate for which it was intended.

### Use the right tool

Do not force small tools or attachments to do the job of a heavy-duty tool. Do not use tools for purposes for which they were not intended; for example do not use a circular saw for cutting trees or logs.

### Do not abuse the cable

Never carry the tool by the cable or pull it to disconnect it from the power socket. Keep the cable away from heat, oil and sharp edges. Do not touch the metal plug pins when connecting or removing the plug.

### Do not over-reach

Keep a proper footing and balance at all times.

### Disconnect tools from power supply

When not in use, before servicing and when changing accessories such as blades, bits and cutters.



*Always switch off and unplug the sander from the power supply before making adjustments or changing abrasive sheets.*

### Remove adjusting keys and wrenches

Ensure that they are removed from the tool before switching on.

### Avoid unintentional starting

Do not carry plugged in tools with your finger on the switch. Check that the switch is off before plugging in to socket.

### Extension cables

Use only three core earthed extension cables suitable for the power input of the tool (minimum cable size 1.5mm<sup>2</sup>). Plug into an earthed socket only. When using a cable reel unwind it fully. Do not use long extension cables.

### Outdoors use

If the tool is suitable to be used outdoors, only use an extension cable intended for outdoor use and marked accordingly. Use a RCD (residual current device) to provide protection against electrical shock. Do not use in rain or damp conditions.

### Connect a dust extraction device

Whenever there are facilities for fitting a dust or fume extraction system, make sure it is connected and used.

### Use recommended accessories

The use of any other accessory or attachment other than recommended in the instructions or catalogue may present a risk of personal injury. Avoid the use of extension cables.

## USING THE ORBITAL SANDER



The sander is designed for sanding wood, removing rust, sanding metal and polishing only. This machine is designed to be used hand held - do not fix to a bench with clamps or vice. Ensure the sander is switched off and unplugged.

### BEFORE OPERATING

- Check the voltage on the sander corresponds with your power supply voltage and that the plug and lead are in good condition.
- You have the correct type of abrasive. Depending on the finish required use coarse grade 50 for rough/uneven surfaces and medium grade 80 for more even surfaces, finally finish with fine grade 120.
- The sander is only for use on dry surfaces. It is not designed to be used in wet or damp conditions. Do not use water as a lubricant/cutting medium or wet and dry abrasive paper
- Use abrasive sheets designed for the sander only. They have dust extraction holes to remove debris from the surface and will last longer.
- Ensure you have and wear suitable personal protection equipment during sanding and cleaning.
- Route the mains lead away from work area.
- Run idle for 30 seconds - if there is any abnormal vibration or other fault. Switch off, inspect and rectify before continuing

### FITTING THE DUST COLLECTOR BAG



Ensure the sander is switched off and unplugged.

Refer to illustration below.

- The dust bag attaches to the opening at the side of the machine.
- Push the fitting onto the dust exhaust hole (2). Line up arrow on the bag fitting with parallel marks on the sander.
- Twist 90 degrees to lock.
- During use empty bag frequently.

### FITTING THE ABRASIVE SHEETS



Ensure the sander is switched off and unplugged.

Refer to illustration below.

- The sole of the sander is designed to extract dust. Only use abrasive sheets with holes that are suitable for the sander.
- Open the rear clamp. Lift up lever (3).
- Position the abrasive sheet on the sander sole (4) making sure that the holes in the sheet line up with the holes in the sole.
- Close the rear clamp.
- Open the front clamp and position the abrasive paper as tight as possible, making sure the holes line up.
- Close the front clamp.

## OPERATION



Make sure the sander is switched off.

Plug into a suitable mains supply. Check the cable is routed well away from moving parts and switch on at plug.

### To switch the sander ON

Press the trigger switch (1).

### Continuous operation

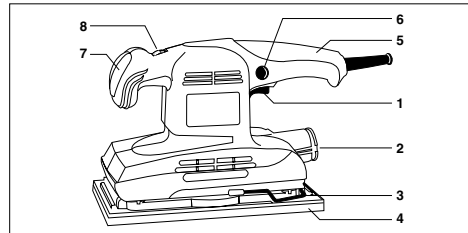
Press button in while trigger switch is depressed then release trigger switch. The machine is now in continuous operation mode.

### To switch OFF

Release trigger switch (depress and release in continuous operation mode).

### To vary speed

Rotate wheel (8) to obtain the best speed for the job (1 is slow, 6 is fast).



## DURING USE

- Use gentle pressure. Excessive pressure will clog the abrasive paper and slow the sanding action.
- Regularly inspect the abrasive during use (switch off first) for signs of damage or wear and replace as required.
- Keep the machine moving. This allows the debris to be cleared easily and increases the life of the abrasive.
- Keep the ventilation slots clear. Clean dust and debris with soft brush (switch off and unplug first).
- Dust collection. Always use the dust collection items supplied, they do not provide complete protection from very fine dust, therefore it is strongly recommended that a suitable dust mask should be worn in addition to other personal protection items.

## MAINTENANCE, CARE AND REPAIR



Switch off and unplug the machine before carrying out any cleaning or maintenance work.

### CLEANING

Wear personal protection equipment during cleaning. Do not use water or flammable liquids to clean the sander, clean with a soft brush.

### FAULTS

#### Switch OFF immediately at the mains plug and remove the plug when:

- The plug or cable is damaged.
- The switch on the machine is defective.
- You smell or see smoke caused by scorched insulation in the machine

#### Overheating

- Put less pressure on the workpiece
- The dust is not removed.  
Check holes in sander sole are clear and line up with holes in the abrasive sheet.  
Clean the dust extraction opening.  
Empty the dust extractor bag.

#### The machine does not start when switched on

- Check the mains lead and the fuse/plug.  
Take to your Ferm Dealer for repair

#### The motor is defective

- Take to your Ferm Dealer

There are no user serviceable/repairable parts inside this machine. Qualified service engineers must carry out repairs and servicing.

## MAINTAIN TOOLS WITH CARE

Keep the tool clean for better and safer performance. Follow instructions for changing accessories. Inspect tool and extension cables periodically and if damaged, have them repaired by a qualified person or authorised service body.

#### Check for damaged parts

Do not use a tool with damaged parts, before further use a damaged tool must be carefully checked by a qualified person to determine that it will operate properly. Check for alignment of moving parts, binding or breakage of parts, mounting and other conditions that may affect its operation.

A damaged part or guard should be properly repaired by an authorised service centre, unless indicated otherwise in the instruction manual. Have defective switches replaced by an authorised service centre. Do not use a tool if the switch does not turn on and off.

#### Have your tool repaired by an expert

This appliance is manufactured in accordance with relevant safety standards. Only experts must carry out repairing of electrical appliances, otherwise considerable danger for the user may result.

## Storing tools

When not in use tools should be stored in the dry, out of reach of children.

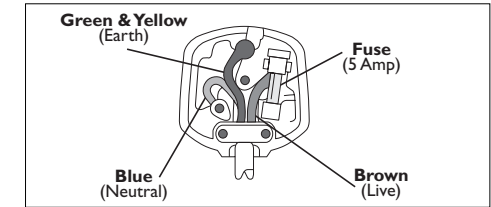
## ELECTRICAL INFORMATION

This product is complete with a pre-wired mains plug. If the plug needs replacing follow these instructions.

### Wire correctly

The wires in the mains lead are coloured in the following way:

- |                     |           |
|---------------------|-----------|
| <b>BLUE</b>         | • Neutral |
| <b>BROWN</b>        | • Live    |
| <b>YELLOW/GREEN</b> | • Earth   |



### Securing wires

Secure wires carefully and firmly to the correct terminals. Secure the mains cable in the plug cord grip firmly. Fit a 5-amp fuse. If a 13amp (BS1363) plug is used a (BS1362) ASTA approved 5-amp fuse must be fitted.

### Recycle/Dispose of old plug and cable

Prevent inadvertent connection to socket and risk of electric shock.

## ENVIRONMENT

Recycle the packaging according to the identification marks on it.

At the end of the product or its accessories life please recycle where facilities exist. Phone the Helpline for current advice on recycling.

### Helpline

For any questions relating to operational or safety matters contact:

Ferm Customer Helpline on: **0115 966 1199**  
Monday-Friday **8am - 6pm**  
Saturday **9am - 1pm**