

LIFESAVER®

SMOKE AND FIRE ALARM USER'S GUIDE

9 Volt Battery Operated Smoke Alarm



MODEL SCA9

Thank you for purchasing a Lifesaver smoke alarm. Please read through our user's guide in full, before installing the unit. This user's guide should be retained for future reference.

Lifesaver recommends for maximum protection that both ionisation and photo-electric smoke alarms be installed. Photoelectric sensing alarms may detect visible fire particles(associated with smoldering fires) sooner than ionisation alarms. Ionisation sensing alarms may detect invisible fire particles (associated with fast flaming fires) sooner than Photoelectric alarms. Home fires develop in different ways and are often unpredictable.

ENGLISH

Your Lifesaver smoke alarm is designed to detect products of combustion using the ionisation technique. It contains 0.9 microcurie of Americium 241, a radioactive material.

WARNING: MOUNTING PLATE WILL NOT CLOSE UNLESS BATTERY IS PRESENT. REMOVAL OF BATTERY WILL RENDER THE SMOKE ALARM INOPERATIVE.

IMPORTANT! READ ALL INSTRUCTIONS BEFORE INSTALLATION AND KEEP THIS MANUAL NEAR THE ALARM FOR FUTURE REFERENCE

CONTENTS OF THIS MANUAL

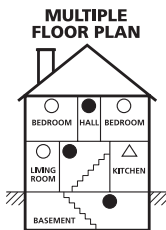
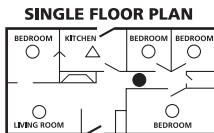
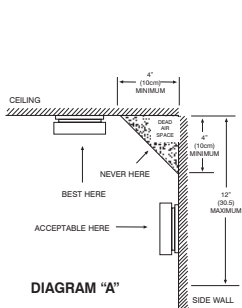
- 1 - RECOMMENDED LOCATIONS FOR SMOKE ALARMS
- 2 - LOCATIONS TO AVOID
- 3 - INSTALLATION INSTRUCTIONS
- 4 - OPERATION AND TESTING
- 5 - NUISANCE ALARMS
- 6 - MAINTENANCE
- 7 - LIMITATIONS OF SMOKE ALARMS
- 8 - GOOD SAFETY HABITS
- 9 - SERVICE AND WARRANTY

This smoke alarm uses an extremely small amount of radioactive element in the ionisation chamber (see Section 9). Do not try to repair the smoke alarm yourself.

Refer to the instructions in Section 9 for service.

1. RECOMMENDED LOCATIONS FOR ALARMS

- Locate the first alarm in the immediate area of the bedrooms. Try to protect the exit path as the bedrooms are usually farthest from the exit. If more than one sleeping area exists, locate additional alarms in each sleeping area.
- Locate additional alarms to protect any stairway as stairways act like chimneys for smoke and heat.
- Locate at least one alarm on every floor level.
- Locate an alarm in every bedroom where a smoker sleeps.
- Locate an alarm in every room where electrical appliances are operated (i.e. portable heaters or humidifiers).
- Locate an alarm in every room where someone sleeps with the door closed. The closed door may prevent the alarm from waking the sleeper.
- Smoke, heat and combustion products rise to the ceiling and spreads horizontally. Mounting the smoke alarm on the ceiling in the centre of the room places it closest to all points in the room. Ceiling mounting is preferred in ordinary residential construction.
- For mobile home installation, select locations carefully to avoid thermal barriers that may form at the ceiling. For more details, see MOBILE HOME INSTALLATION on page 2.
- When mounting an alarm on the ceiling, locate it at a minimum of 4" (10cm) from the side wall and 2 feet (60.96cm) from any inside corner (see Diagram A).
- When mounting the alarm on the wall, use an inside wall with the top edge of the alarm at a minimum of 4" (10cm) and a maximum of 12" (30.5cm) below the ceiling, and at least 2 feet (61cm) from any inside corner (see Diagram A).
- Put smoke alarms at both ends of a bedroom hallway or large room if the hallway or room is more than 30 feet (9.1m) long.



- Smoke Alarms for Minimum Protection
- Smoke Alarms for Additional Protection
- △ Smoke Alarms with "HUSH" Control

DIAGRAM "B"

MOBILE HOME INSTALLATION

Mobile homes built in the past five to seven years have been designed to be energy efficient. Install smoke alarms as recommended above (refer to RECOMMENDED LOCATIONS and Diagram A).

In mobile homes that are not well insulated compared to present standards, extreme heat or cold can be transferred from the outside to the inside through poorly insulated walls and roof. This may create a thermal barrier which can prevent the smoke from reaching an alarm mounted on the ceiling. In such units, install the smoke alarm on an inside wall with the top edge of the alarm at a minimum of 4" (10cm) and a maximum of 12" (30.5cm) below the ceiling (see Diagram A).

If you are not sure about the insulation in your mobile home, or if you notice that the outer walls and ceiling are either hot or cold, install the alarm on an inside wall. For minimum protection, install at least one alarm close to the bedrooms. For additional protection, see SINGLE FLOOR PLAN in Diagram B.

WARNING: TEST YOUR SMOKE ALARM OPERATION AFTER CARAVAN OR MOBILE HOME VEHICLE HAS BEEN IN STORAGE, BEFORE EACH TRIP AND AT LEAST ONCE A WEEK DURING USE.

2. LOCATIONS TO AVOID

- In the garage. Products of combustion are present when you start your car.
- In front of forced air ducts used for heating and air conditioning, near ceiling fans, or other high air flow areas.
- In the peak of an "A" frame type ceiling.
- In an area where the temperature may fall below 5°C or rise above 45°C.
- In dusty areas. Dust particles may cause nuisance alarm or failure to alarm.
- In very humid areas or near a bathroom. Moisture or steam can cause nuisance alarms.
- Near fluorescent lights. Electronic "noise" may cause nuisance alarms.

When mounting in a hallway, the "A" line should be parallel with the hallway.



FIGURE 1



FIGURE 2

When wall mounting, the "A" line should be horizontal and the "UP FOR WALL MOUNTING" arrow must be pointing up.

When installing the battery, first push this spring loaded arm down into the battery cavity. Insert the battery into the cavity (observing polarity) to keep the arm down.



FIGURE 3

Alignment Marks

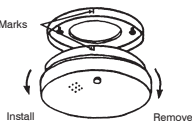


FIGURE 4

3. INSTALLATION INSTRUCTIONS

CAUTION: THIS UNIT IS SEALED. THE COVER IS NOT REMOVABLE!

1. Remove the mounting plate from the back of the alarm by holding the mounting plate and twisting the alarm in the direction indicated by the "OFF" arrow on the alarm cover.
2. To ensure aesthetic alignment of the alarm with the hallway or wall, the "A" line on the mounting plate must be parallel with the hallway when ceiling mounting or horizontal when wall mounting.
3. After selecting the proper smoke alarm location as described in Section 1, attach the mounting plate to the ceiling as shown in Figure 1. For wall mounting see Figure 2. Place mounting plate on the wall. Be sure the "UP FOR WALL MOUNTING" text and arrow are facing up. Use the screws and anchors provided to secure the mounting plate.
4. Battery installation instructions are provided on the inside of the battery door. To ensure proper installation of the smoke alarm battery, follow the instructions.
5. When installing the battery, press the battery reminder finger down into the battery compartment and install the battery (see Figure 3).
6. After installation, test your alarm by depressing and holding down the test button for several seconds, or by blowing smoke into the alarm. This should sound the alarm.

CAUTION! EARLY WARNING FIRE DETECTION IS BEST ACHIEVED BY THE INSTALLATION OF FIRE DETECTION EQUIPMENT IN ALL ROOMS AND AREAS OF THE HOUSEHOLD AS FOLLOWS: A SMOKE ALARM INSTALLED IN EACH SEPARATE SLEEPING AREA (IN THE VICINITY OF - BUT OUTSIDE OF THE BEDROOM) AND HEAT OR SMOKE ALARMS IN THE LIVING ROOM, DINING ROOM, KITCHEN, HALLWAYS, ATTIC, BOILER ROOM, CLOSETS, UTILITY STORAGE ROOM, CELLARS AND ATTACHED GARAGE.

4. OPERATION AND TESTING

OPERATION: The smoke alarm is operating once a fresh battery is installed and testing is complete. When products of combustion are sensed, the unit sounds a loud 85db pulsating alarm until the air is cleared.

FLASHING LED LIGHT: This smoke alarm is equipped with a flashing red indicator light. The light is located under the test button and will flash every 30-40 seconds to indicate that the smoke alarm is receiving power.

TESTING: Test by pushing the test button on the cover and holding it down for a minimum of 2 seconds. This will sound the alarm if the electronic circuitry, horn and battery are working. If no alarm sounds, the unit has defective batteries or other failure. You can also test the alarm by blowing smoke into it.

TEST THE ALARM WEEKLY TO ENSURE PROPER OPERATION. Erratic or low sound coming from your alarm may indicate a defective alarm and it should be returned for service (see Section 11).

5. NUISANCE ALARMS

Smoke alarms are designed to minimise nuisance alarms. Cigarette smoke will not normally set off the alarm, unless the smoke is blown directly into the alarm. Combustion particles from cooking may set off the alarm if the alarm is located close to the cooking area. Large quantities of combustible particles are generated from spills or when broiling. Using the fan on a cooker hood which vents to the outside (non-recirculating type) will also help remove these combustible products from the kitchen.

If the alarm sounds, check for fires first. If a fire is discovered, get out and call the fire brigade. If no fire is present, check to see if one of the reasons listed in Section 2 may have caused the alarm.

6. MAINTENANCE

BATTERY REPLACEMENT

To replace the battery, remove the alarm from the mounting plate by rotating the alarm in the direction of the "OFF" arrow on the cover (see Section 3, Figure 1).

The Model SCA9 is powered by a 9V carbon zinc battery (alkaline battery may also be used). A fresh battery should last for one year under normal operating conditions. This alarm has a low battery monitor circuit which will cause the alarm to "chirp" approximately every 30-40 seconds for a minimum of seven (7) days when the battery gets low. Replace the battery when this condition occurs.

USE ONLY THE FOLLOWING 9 VOLT BATTERIES FOR SMOKE ALARM REPLACEMENT:

Carbon Zinc Type:	EVEREADY 216 or 1222 GOLD PEAK 1604S
Alkaline Type:	EVEREADY 522, DURACELL MN1604, MX1604 GOLD PEAK 1604A, PANASONIC 6AM6, 6AM-6, 6AM-6PI, 6AM6X or 6LR61(6A)
Lithium Type:	ULTRALIFE U9VL

NOTE: REGULAR TESTING IS RECOMMENDED.

WARNING! USE ONLY THE BATTERIES SPECIFIED. USE OF DIFFERENT BATTERIES MAY HAVE A DETRIMENTAL EFFECT ON THE SMOKE ALARM.

CLEANING YOUR ALARM

To clean your alarm, remove it from the mounting bracket as outlined in the beginning of this section. You can clean the interior of your alarm (sensing chamber) by using your vacuum cleaner hose and vacuuming through the openings around the perimeter of the alarm. The outside of the alarm can be wiped with a damp cloth.

After cleaning, reinstall your alarm. Test your alarm by using the test button.

It is recommended this alarm be replaced ten years from the date of manufacture. For your convenience, this date has been provided to you on a label located on the side of the alarm.

7. LIMITATIONS OF SMOKE ALARMS

WARNING: PLEASE READ CAREFULLY AND THOROUGHLY

Smoke alarms are devices that can provide early warning of possible fires at a reasonable cost; however, alarms have sensing limitations. Ionisation type alarms offer a broad range of fire sensing capabilities but are better at detecting fast flaming fires than slow smouldering fires. Photoelectric alarms sense smouldering fires better than flaming fires. Home fires develop in different ways and are often unpredictable. Neither type of alarm (photoelectric or ionisation) is always best, and a given alarm may not always provide warning of a fire.

- A battery powered alarm must have a battery of the specified type, in good condition and installed properly.
- Mains powered alarms will not operate if the mains power has been cut off, such as by an electrical fire or an open fuse.
- Smoke alarms must be tested regularly to make sure the batteries and the alarm circuits are in good operating condition.

- Smoke alarms cannot provide an alarm if smoke does not reach the alarm. Therefore, smoke alarms may not sense fires starting in chimneys, walls, on roofs, on the other side of a closed door or on a different floor.
- If the alarm is located outside the bedroom or on a different floor, it may not wake up a sound sleeper.
- The use of alcohol or drugs may also impair one's ability to hear the smoke alarm. For maximum protection, a smoke alarm should be installed in each sleeping area on every level of a home.
- Although smoke alarms can help save lives by providing an early warning of a fire, they are not a substitute for an insurance policy. Home owners and tenants should have adequate insurance to protect their lives and property.

8. GOOD SAFETY HABITS

DEVELOP AND PRACTICE A PLAN OF ESCAPE

- Make a floor plan indicating all doors and windows and at least two (2) escape routes from each room. Second storey windows may need a chain ladder.
- Have a family meeting and discuss your escape plan, showing everyone what to do in case of fire.
- Determine a place outside your home where you all can meet if a fire occurs.
- Familiarise everyone with the sound of the smoke alarm and train them to leave your home when they hear it.
- Practice a fire drill at least every six months. Practice allows you to test your plan before an emergency. You may not be able to reach your children. It is important they know what to do.

WHAT TO DO WHEN THE ALARM SOUNDS

- Leave immediately by your escape plan. Every second counts, so don't waste time getting dressed or picking up valuables.
- In leaving, don't open any inside door without first feeling its surface. If hot, or if you see smoke seeping through cracks, don't open that door! Instead, use your alternate exit. If the inside of the door is cool, place your shoulder against it, open it slightly and be ready to slam it shut if heat and smoke rush in.
- Stay close to the floor if the air is smoky. Breathe shallowly through a cloth, wet if possible.
- Once outside, go to your selected meeting place and make sure everyone is there.
- Call the fire brigade from your neighbour's home - not from yours!
- Don't return to your home until the fire officials say that it is alright to do so.

There are situations where a smoke alarm may not be effective to protect against fire for instance:

- a) smoking in bed
- b) leaving children home alone
- c) cleaning with flammable liquids, such as petrol

9. SERVICE AND WARRANTY

If after reviewing this manual you feel that your smoke alarm is defective in any way, do not tamper with the unit. Return it for servicing to: PSA Products Pty Ltd. 17 Millicent Street, Burwood, Victoria 3125, Australia. Phone: (03) 9888 9889, Fax: (03) 9888 9993 or Freecall 1300 655 188.

CAUTION! This smoke alarm contains less than 1 microcurie of Americium 241, a radioactive material. This substance requires the smoke alarm to be returned to the manufacturer or the Department of Health for disposal. Do not dispose of it in any other way.

THREE YEAR WARRANTY

PSA Products warrants to the original purchaser of each new smoke alarm to be free from defects in materials and workmanship, under normal use and services, for a period of three (3) years from the date of purchase. The company will not be obligated to repair or replace parts which are found to be in need of repair, or replace parts because of misuse, damage, or alteration incurred after date of purchase. PSA Products agrees to repair or replace, at its option, any defective smoke alarm provided that it is returned with proof of purchase and return postage prepaid to PSA Products. To the extent permitted by law, the liability of PSA Products arising from the sale of this smoke alarm or under the terms of this limited warranty, shall not in any case exceed the cost of a replacement smoke alarm and subject to this clause. In no case shall PSA Products be liable for consequential loss or damages resulting from the failure of the smoke alarm or breach of this, or any other warranty, express or implied, loss or damage caused by failure to abide by the instructions supplied in this user manual. This warranty is in addition to and does not exclude the rights of consumers under the Australian Trade Practices Act 1974, or any other law which may not be excluded.

ALTHOUGH A SMOKE ALARM CAN HELP SAVE LIVES BY PROVIDING AN EARLY WARNING OF A FIRE. IT IS NOT A SUBSTITUTE FOR PROPERTY INSURANCE OR LIFE INSURANCE OF ANY KIND. APPROPRIATE INSURANCE COVER IS THE RESPONSIBILITY OF THE HOME OWNER.

Another Quality Product By:

PSA Products Pty Ltd

17 Millicent Street, Burwood, Victoria 3125, Australia

Ph: (03) 9888 9889 Fax: (03) 9888 9993

E-mail: enquiry@psaproducts.com.au

Website: www.psaproducts.com.au