



# ZONE SHIELD<sup>®</sup> EZ

Hidden Video by SleuthGear<sup>®</sup>

## EZ HD DVR Manual

Table of Contents	
Warnings & Precautions	2
Includes	3
Introduction	3
Quick Setup Guide	3
Features	3
Setup	4
Using Your Camera	5
Playback	6
Frequently Asked Questions	6
Specifications	8
Pictures	9
Warranty & Disclaimers	10



# ZONE SHIELD EZ

Hidden Video by SleuthGear®



**Do not open/modify** the device, as it may cause damage to the unit and void the Warranty. For internal repairs, consult your dealer or an Authorized Service Center.



**Do not use** any accessories or power supplies other than what comes with the device, otherwise it could void the warranty.



**Protect from humidity.** Do not put it in water and be careful to protect it from rain, sea water, or high humidity environment. Do not operate the unit near a bath tub, shower, sink, swimming pool, etc.



**Protect from high temperatures.** To avoid damage or mis-operation of the device, only use in temperature of 0 ~ +40°C(32 ~ 104°F).



**Do not bring** the device suddenly from a hot to a cold place, or vice versa. This may cause damage to the inside of the unit by creating condensation.



#### EU Environmental Protection

The symbol of crossed-out garbage shows that this product should not be treated as household waste, as it falls into the category of electric/electronic equipment for recycling. This electronic device should not be disposed of in regular trash. We strongly advise you to contact your local authority for proper disposal of this product.



# ZONE SHIELD® EZ

Hidden Video by SleuthGear®

## Includes

---

- Zone Shield® EZ DVR camera by SleuthGear®
- CD with full User Manual

## Introduction

---

The Zone Shield® EZ hidden camera is crafted by SleuthGear® for the simplified ease of use and features. The camera is created for discreet surveillance anywhere you need to protect what matters most to you. The camera is very easy to set up and can be used in two ways: continuously record (capture video all day) or motion record (capture video only when the camera detects activity). It also records in high-definition, it is just that EZ.

Some best uses for this camera are: Aging parents, Parental control, Know your nanny, Protect your home when you have workers or domestic help, Asset protection, and much more!

## Quick Setup Guide

---

1. Remove the camera from the packaging.
2. Properly install the memory card into the memory card slot.
3. Select the desired recording mode by moving the switch to “C” for Continuous or “M” for Motion Detection.
4. Plug into any available wall outlet to begin surveillance.

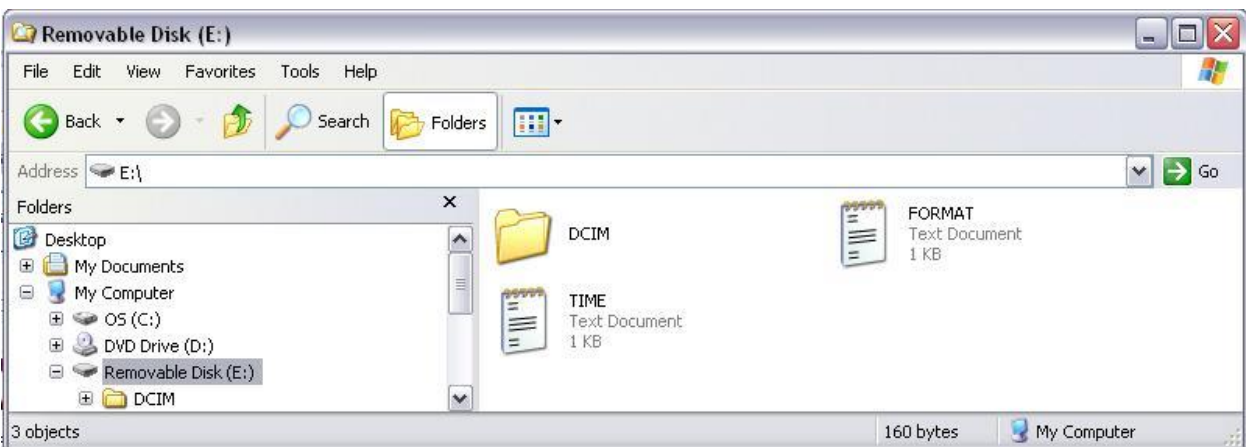
## Features

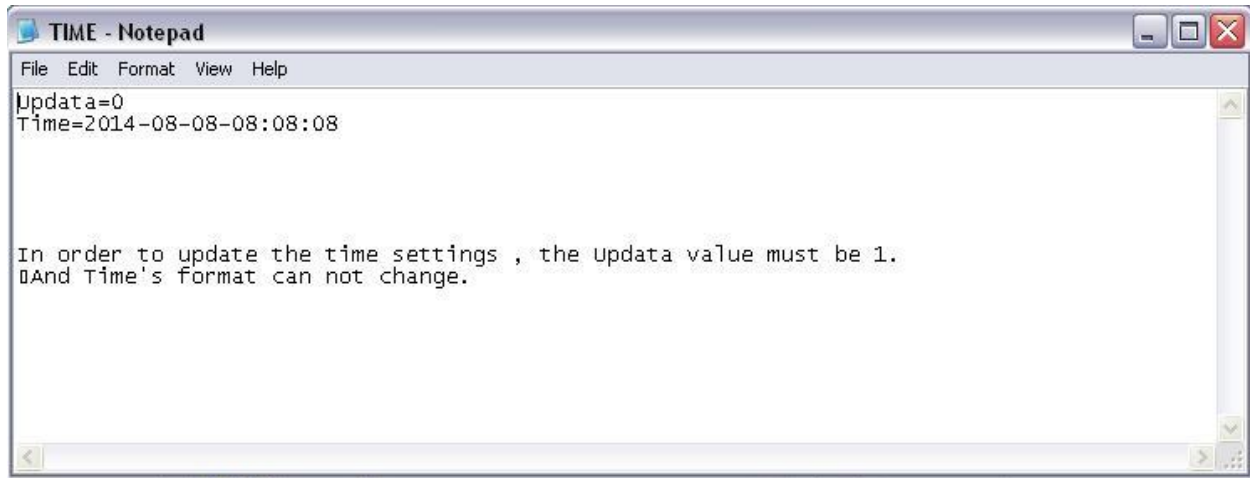
---

- High-definition camera
- 1280\*720p HD resolution recording
- Supports up to 32GB memory card storage, for up to 9 ½ hours of video recording
- 2 recording modes – Continuous or Motion Detection
- Time and Date video stamp
- Easy access On/ Off button

## Setup

1. Install the memory card by inserting it until secured in the memory card slot. You should hear or feel a click once the slot secures the card. If it will not fully insert into the slot, flip the card over and try again (See pg. 9 for picture). *Note: Forcing the memory card to be inserted in the improper orientation may damage the camera and void the warranty.*
2. To set the time and date stamp, the settings file must be generated onto the memory card by the camera, modified, then read and recorded:
  - a. Plug the camera into a power outlet and wait approximately 30 seconds before removing it. This formats the card and generates a text file for time settings.
  - b. Remove the memory card by gently pressing down on it and then lifting off. When pressing down, you may hear or feel a click once the slot releases its hold on the card. Upon lifting off, the card will be released and eject slightly so it can now be removed.
  - c. Insert the memory card into an adapter or card reader on a computer.
  - d. Open the text file on the memory card. Keeping the format as-is, change the 0 after **Updata** to 1, update the date and time, then save the file as the same name on the memory card:
    - i. YYYY-MM-DD-HH:MM:SS





- e. Insert the memory card securely back into the slot on the camera
  - f. It is recommended that the camera be power cycled one time after setting the time and date stamp before making recordings.
3. Select the recording mode by moving the switch either left or right (see pg. 9 for picture):
  - a. M = Motion Detection recording
  - b. C = Continuous recording

## Using Your Camera

1. Plug the camera into any compatible wall outlet in the desired surveillance area. It will immediately power on and begin to boot. Boot time is approximately 3 seconds, during which the internal red LED light will remain lit and is visible near the memory card slot.
2. Once booted, the camera will enter the selected recording mode, confirmed by the following internal LED status indicators, which can be seen near the memory card slot:
  - a. Flashing Red – the camera is recording in Continuous mode
  - b. Flashing Green – the camera is recording in Motion Detection mode
  - c. No Lights – the camera is in motion Detection mode, but no motion is detected
3. In either mode, video will be recorded and saved as video files onto the memory card and will over-write the oldest files, one at a time, once the memory card has reached its full capacity:
  - a. Continuous – Recording will be constant and saved in 5-minute long files for quick and easy review and backup.
  - b. Motion Detection – Once the camera has detected motion, recording will begin. Recording will continue as long as motion is detected, but will stop 30 seconds after motion is no longer detected. If motion is detected for more than 5 minutes, the file will be saved and a new file started; this process will repeat as long as motion continues to be detected. The files in this mode will vary from 30 seconds up to 5 minutes.



4. This camera is equipped with an On/ Off button for the DVR. To turn the DVR off, simply press and hold the On/ Off button for 5 seconds. To turn the DVR back on, simply press and immediately release the button, which resumes the selected recording mode. (see pg. 9 for picture). **If the camera is unplugged and plugged back in, the DVR will automatically turn back on, regardless if it was turned off using the On/ Off button.** *Note: To prevent corruption of the memory card and the recorded files, always turn the camera off using the On/Off button prior to removing it from the power outlet.*

## Playback

---

1. With the camera powered off, remove the micro memory card from the board.
2. Place the memory card into an adapter or card reader on a computer
3. Navigate to the recorded video files.
4. Use a media player such as Windows Media Player or VLC ([www.videolan.org](http://www.videolan.org)) to playback the video files.
5. Backup, save, or delete the files as desired.
6. Use the computer's safe remove function to safely release the memory card from the operating system prior to physical removal in order to prevent corruption of the memory card and any remaining files.

## Frequently Asked Questions

---

### Q. What size memory cards can I use in this camera?

**A.** Most memory cards, of up to and including 32GB capacity, are supported. If a memory card does not appear to work, try removing and formatting the memory card using a computer before trying it in the camera again.

### Q. Why did I not get a recording when I know there was motion in front of the camera?

**A.** The motion was not detected because it was too little, too quick or too far away. Make test recordings to discover the limits of detection in your given placement and environment.

### Q. Why will my video file not play or the file is corrupted?

**A.** If the camera is not properly powered down prior to removing the memory card, the files on the memory card, or the memory card itself, may become corrupted. Make sure to always properly

power down the camera before attempting to remove the memory card.

**Q. Why do I only see part of my desired surveillance target?**

**A.** Placement of any camera is a very important step in setup. Be sure to make test recordings of the desired area of surveillance prior to final setup to ensure the camera can perform as desired in your given environment. This should not only include what area can be captured by video, but also testing the ability to properly trigger recording in the area if using Motion Detection mode.

**Q. Why do I not have the time and date displaying on the recorded files?**

**A.** The time and date must be set up before they will display on the recorded files prior to first time use. This also may be required again when the camera has been left unplugged for a significant duration of time. For instructions on how to set up the video timestamp, see the **Setup** section.

**Q. Why can't I find my recorded files on my memory card?**

**A.** Recorded files are saved inside folders on the memory card. As with almost all video and photo cameras, the files are saved inside a folder named **DCIM**. On this camera, the files are actually saved within folders that end in the digits for month and day, found inside the DCIM folder. Within those dated folders, the files are saved in numerical sequence of their occurrence.

**Q. What media player software should I use to playback the recorded files?**

**A.** The recorded files are in the .AVI format, which is able to be played back on software such as Windows Media Player and others often pre-installed on a personal computer. If you are having trouble with playback, try downloadable software such as the free open-source player VLC (videolan.org). (If the files are put on a CD or DVD, some DVD or Blu-ray players are able to directly playback the .AVI format – please consult your camera's user manual for compatibility.)

**Q. What is the "Format" text file the camera puts onto the memory card?**

**A.** If you wish to have the camera format your memory card, change the number in the file from 0 to 1 and save it. The next time you insert the memory card into the camera and plug it in, it will wipe all data from the card. It is recommended that the camera be power cycled one time after performing the format before making recordings.

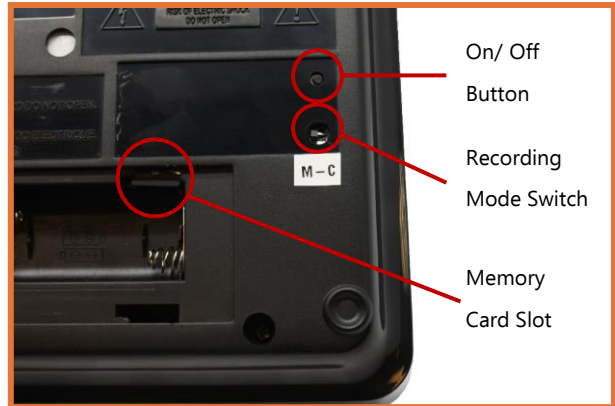


## Specifications

Camera	Image Sensor	1.3MP CMOS
	Effective Pixels	1280*720
	Lens Type	Pinhole lens
	Electronic Shutter	1/25~1/100,000s
	Field Of View	62°
	Lux Rating	Color 0.6Lux@F1.2
Video Files	File Type	.AVI
	Video Standard	H.264
	Audio Standard	G.711 (Law Enforcement & Export ONLY)
	Resolution	1280*720
	Frame Rate	NTSC: 1-30fps
Memory	Type	Micro SD card
	Max Capacity	32GB
Other	Power Supply	Input AC 110-240V
	Power Consumption	≤1.5W
	Working Temperature	+14°F ~ 130°F
	Working Humidity	10 ~ 85%
	Dimensions(in.)	(L)2.5 * (W)2 * (H)1.75
	Weight	3.2 oz

## Pictures

### Clock Radio



- On/ Off Button
- Recording Mode Switch
- Memory Card Slot

## Manufacturer's Limited Warranty

Manufacturer warrants all Covert Video and Sleuth Gear Hidden Video Products (Product) assembled and sold by Manufacturer to be free of defects in material and workmanship, subject to the following conditions. The duration of Manufacturer's warranty with respect to the Product is limited to one (1) year from the date of sale to the original consumer purchaser only for Products delivered within the fifty (50) states of the United States, District of Columbia, or the possessions and territories of the United States

**No other express warranties are made with respect to any Product. All implied warranties, including warranties of merchantability and fitness for a particular purpose are limited to the warranty period set forth above. This warranty is not transferable and applies only to the original consumer purchaser of the Product.**

Manufacturer will, as its sole obligation under this warranty, replace or repair, at its option, any Product that does not conform to this warranty. Under no circumstances will the Manufacturer issue credit or give a refund for Product covered by this warranty. Furthermore, under no circumstances will Manufacturer be liable for any incidental or consequential damages under this warranty or any implied warranties.

### What is not covered:

This limited warranty does not cover Products that in Manufacturer's judgment have damage resulting from any (i) deviation from Manufacturer's operating instructions as printed in Manufacturer's catalog or on any packaging, labels or other literature provided with a Product, (ii) installation of a Product in a manner which is inconsistent with Manufacturer's written instructions, (iii) alteration, modification of or tampering with a Product, (iv) misuse, (v) neglect, (vi) abuse, (vii) accident, (viii) power surge, static electricity or other electrical discharge, (ix) normal wear and tear, (x) commercial use, (xi) service by anyone other than a Manufacturer authorized repair facility, or (xii) other improper application, installation or operation of the Product. Or, (xiii) have been purchased from inventory clearance or liquidation sales or other sales in which Manufacturer expressly disclaims its warranty obligation pertaining to the Product.

### How you (the Customer) can get service:

To obtain warranty service during the warranty period, you must return the defective Product with the original receipt to the original place of purchase. Contact them for return instructions. If warranty service is needed at any time during the warranty period, the purchaser will be required to furnish a sales receipt/proof of purchase indicating the date of purchase, amount paid and place of purchase. Customers who fail to provide such proof of purchase will be charged for the repair of any Product.

### How state law relates to the warranty:

Some states do not allow limitations on how long implied warranties last, or the exclusion or the limitation of incidental or consequential damages. So the above limitations or exclusions may not apply to you. This warranty gives you specific legal rights. You may also have other rights that may vary from state to state.

### NO PERSON IS AUTHORIZED BY MANUFACTURER TO MODIFY OR ADD TO THIS LIMITED WARRANTY.

**For warranty information on Products delivered outside the United States please contact the original place of purchase.**

DO NOT ATTEMPT TO RETURN PRODCUT TO ORIGINAL MANUFACTURER, AS THIS PRODUCT HAS BEEN MODIFIED AND IS NO LONGER SUBJECT TO ORIGINAL MANUFACTURER'S WARRANTY. IN THE CASE OF A DEFECTIVE PRODUCT, CONTACT PLACE OF PURCHASE FOR RETURN PROCEDURE.

IT IS THE USER'S RESPONSIBILITY TO ENSURE THAT THIS EQUIPMENT IS USED IN ACCORDANCE WITH THE LAW(S) OF THE JURISDICTION IN WHICH THIS EQUIPMENT IS UTILIZED.]

THIS PRODUCT MAY BE SUBJECT TO THE JURISDICTION OF THE U.S. WIRE AND COMMUNICATIONS ACT (18 UNITED STATES CODE §§ 2510-2522) (HEREINAFTER REFERRED TO AS "ACT") REGARDING SURREPTITIOUS RECORDING DEVICES. THE USES OF SUCH PRODUCTS ARE REGULATED BY THE ACT. ADDITIONALLY, THE LAWS OF SOME STATES, COUNTIES, CITIES OR LOCALITIES MAY PROHIBIT THE POSSESSION AND/OR USE OF THIS OR SIMILAR PRODUCTS. IT IS THE RESPONSIBILITY OF THE RETAIL BUYER AND/OR FINAL CONSUMER (HEREINAFTER REFERRED AS "BUYER") TO ASCERTAIN, UNDERSTAND, AND OBEY ANY AND ALL APPLICABLE LOCAL, STATE, AND FEDERAL LAWS REGARDING POSSESSION AND USE OF THIS PRODUCT. BY PURCHASING THIS PRODUCT THE BUYER REPRESENTS THAT IT WILL INDEMNIFY THE MANUFACTURER AND/OR DISTRIBUTOR AND HOLD THEM HARMLESS FOR ANY POSSESSION, USE AND/OR MISUSE THAT VIOLATE ANY FEDERAL, STATE OR LOCAL LAW OR REGULATION REGARDING AUDIO AND/OR VIDEO DEVICES. BUYER AGREES TO CONSULT WITH AN ATTORNEY AT LAW REGARDING POSSESSION OR APPROPRIATE USE OF A COVERT DEVICE. NOTE THAT LAWS AND REGULATIONS VARY FROM STATE TO STATE. IF BUYER EXPORTS THIS PRODUCT, THE BUYER WILL COMPLY WITH US EXPORT CONTROL LAWS AND ANY APPLICABLE DEPARTMENT OF COMMERCE, STATE AND TREASURY REGULATIONS GOVERNING EXPORTS AND SALES TO PROHIBITED END USERS. DIVERSION OR RE-EXPORT CONTRARY TO U.S. LAW IS PROHIBITED. BUYER SHALL COMPLY WITH ALL APPLICABLE FEDERAL, STATE, AND LOCAL LAWS AND REGULATIONS GOVERNING THE SALE OF THIS PRODUCT, INCLUDING U.S. EXPORT CONTROL LAWS AND THE U.S. DEPARTMENT OF COMMERCE AND TREASURY REGULATIONS GOVERNING SALES TO PROHIBITED END USERS.

**PART 15 LOW POWER:** ANY CHANGES OR MODIFICATIONS TO THIS EQUIPMENT WITHOUT THE EXPRESS AUTHORIZATION OF THE MANUFACTURER COULD VOID THE USER'S AUTHORITY TO OPERATE THIS EQUIPMENT(RULE 15.21 OF THE FCC).

THIS EQUIPMENT HAS BEEN TESTED AND HAS BEEN FOUND TO BE IN COMPLIANCE WITH THE LIMITS FOR A CLASS B DIGITAL DEVICE, PURSUANT TO PART 15 OF THE FCC RULES. THESE LIMITS ARE DESIGNED TO PROVIDE REASONABLE PROTECTIONS AGAINST HARMFUL INTERFERENCE IN A RESIDENTIAL INSTALLATION. THIS EQUIPMENT USES, GENERATES AND CAN RADIATE RADIO FREQUENCY ENERGY AND IF NOT INSTALLED AND USED IN ACCORDANCE WITH INSTRUCTIONS, MAY CAUSE HARMFUL INTERFERENCE TO RADIO COMMUNICATIONS.