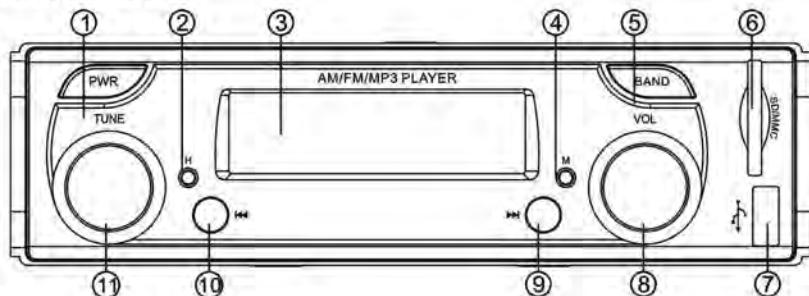


PYLE®

PLR16MPF

I. Control Panel



- | | |
|-------------------------|--------------------|
| ① Power Switch Key | ⑦ U-Disk Jack |
| ② Hour Adjustment Key | ⑧ VOL Control Knob |
| ③ LCD | ⑨ Back /REW Key |
| ④ Minute Adjustment Key | ⑩ Next /FF Key |
| ⑤ Radio Band Switch key | ⑪ Tuning Knob |
| ⑥ SD/MMC Card Jack | |

II. Basic Operations

1. Power ON/OFF (PWR)

Press the (PWR) key to turn on the player; release the (PWR) key to turn off the player.

2. Volume Adjustment (VOL)

Under Radio or Playing state, turn the volume knob clockwise to increase volume, turn it anticlockwise to drop volume.

3. Adjust Time

Under SD/MMC card or U disk playing state, press the (H) key to adjust Hour; press the (M) key to adjust minute.

III. Radio

- ①Tune (TUNE): Under Radio state, turn the tune knob to receive your favorable band. Turn the knob clockwise to increase frequency, turn it anticlockwise to decrease frequency.

IV. Player Operation

①Playing Switch

Under SD/MMC card playing state, insert the U disk, the player automatically switches to U disk playing state, insert the SD/MMC card, the player automatically switches to SD/MMC card playing state.

②Select Music:

Back / REW (⏮): Under U disk or SD/MMC card playing state, press the (⏮) key to switch to previous program; hold the (⏮) key for over 2 seconds to select program quickly backward, the player may starting from current program, quickly select program and 1 programs may be searched every 0.2 second.

Next / FF (⏭): Under U disk or SD/MMC card playing state, press the (⏭) key to switch to Next program; hold the (⏭) key for over 2 seconds to select program quickly forward, the player may starting from current program, quickly select program and 1 programs may be searched every 0.2 second.

Note: A. The player supports SD/MMC card and U disk whose capacity is 32MB~2GB.

B. The player supports MP3 audio format.

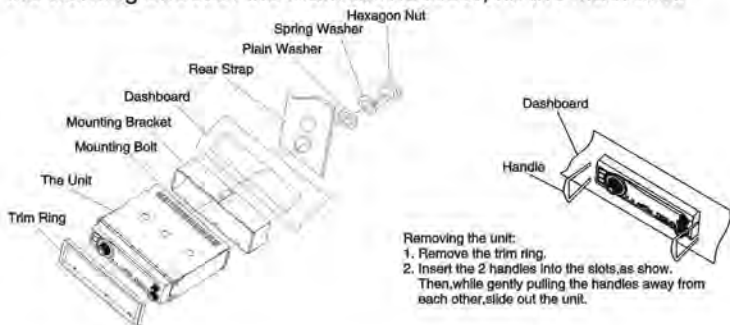
C. The player has memory function.

V. Cautions:

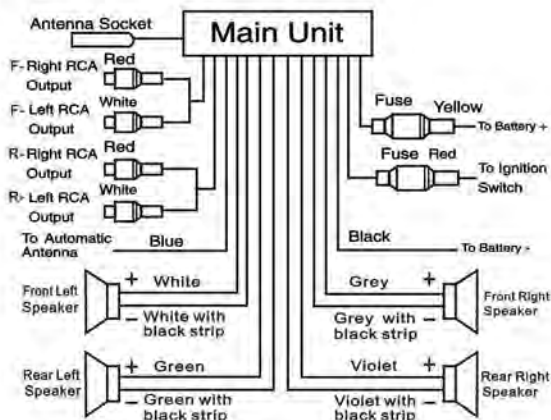
When replacing fuse, please select the fuse of same specification, do not replace it with others.

VI. Installation Diagram

1. Before install the main unit, please place the main unit at desired position, connect the speaker wire and power wire for test use.
2. After the working effect of the main unit is ideal, fix the main unit.



VII. Wiring Diagram



VIII. Technical Parameters

FM

Frequency Range ----- 87MHz~108MHz
Sensitivity ----- $\leq 37\text{dBf}$
SNR ----- $\geq 40\text{dB}$

AM TUNER

Tuning range ----- 530-1710KHz
Usable sensitivity ----- 40dB

MP3 Play

Frequency Response ----- $100\text{Hz}\sim 8\text{kHz} (\pm 3\text{dB})$
SNR ----- $\geq 40\text{dB}$
Channel Separation ----- $\geq 40\text{dB}$
Voltage Harmonic Distortion (1kHz) ----- $\leq 5\%$
Stereo Channel Balance ----- $\leq 3\text{dB}$

General Indices

Voltage ----- 12 DC Power Supply
Speaker Impedance ----- $4\sim 8\Omega$
Max Output Power ----- $40\text{W}\times 4 (160\text{Watts})$
Dimension ----- $178\text{mm (Width)}\times 50\text{mm (Height)}\times 145\text{mm (Depth)}$

IX. Troubleshooting

Fault	Reasons	Solutions
Power indicator doesn't light on	1.Power supply is not correctly connected. 2.Fuse is broken or power circuit is open.	Correctly connect power supply. Check and connect power wire, replace fuse.
No sound	1.No power supply. 2.Speaker wire is open circuit. 3.SD/MMC card, U disk don't have song with corresponding format. 4.SD/MMC card, U disk golden finger is dirt which causes bad contact. 5.When playing SD/MMC card, U disk, the Pause key (►) is pressed.	Connect the power wire. Connect speaker wire. Check the contents of SD/MMC card, U disk. Clean with absolute alcohol. Press the Pause key (►) .
Low sound (not clear)	1.Power internal resistance is high. 2.Antenna is bad contact.	Replace the power supply. Tighten the antenna plug.
Mono track	1.One channel of speaker wire is open circuit. 2.Amplifier integrated circuit is damaged.	Connect speaker wire. Replace the IC of amplifier.

Note: Technical data is subject to change without prior notice.