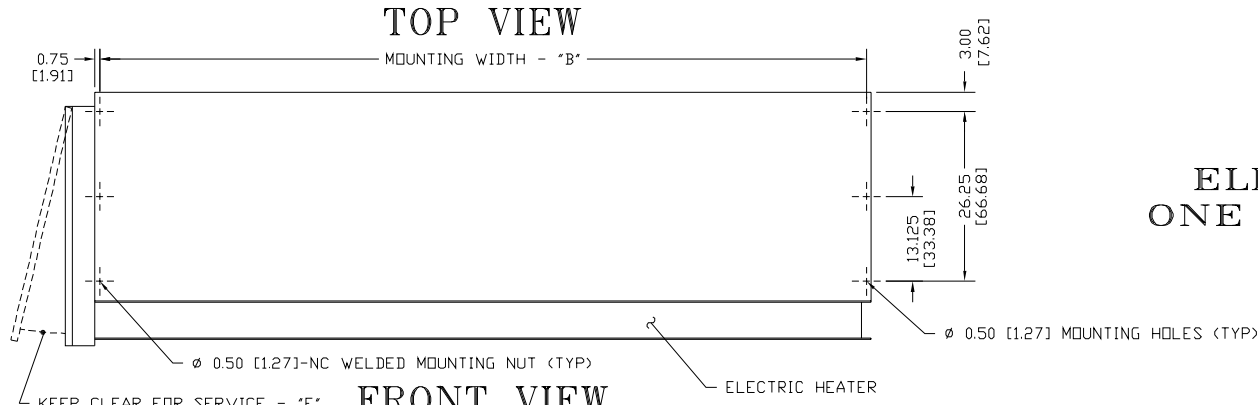
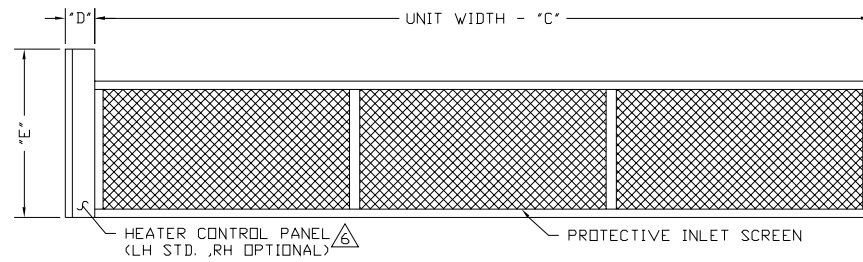
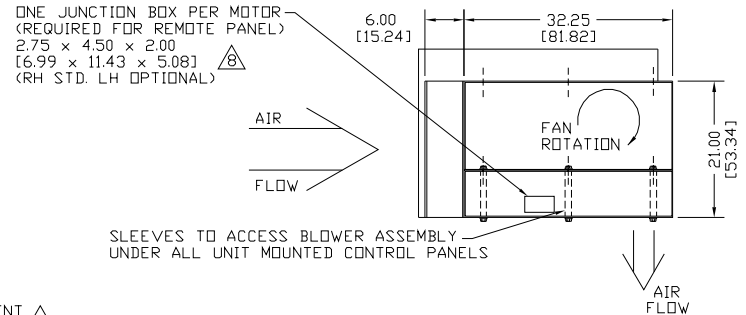


CFC ELECTRIC HEATED ONE HEATER SYSTEM



END VIEW



BOTTOM VIEW

NOTES:

- 1 AIR CURTAIN MUST BE INSTALLED SO AIR STREAM IS NOT OBSTRUCTED WHEN DEFLECTED 20° TO EITHER SIDE OF ϕ .
- 2 ELECTRICAL CONNECTIONS TO BE FLEXIBLE.
- 3 FIELD VERIFY DIMENSIONS.
- 4 ANCHORS TO SUPPORTING STRUCTURE BY OTHERS.
- 5 ADEQUACY OF SUPPORTING STRUCTURE IS TO BE VERIFIED BY A PROFESSIONAL STRUCTURAL ENGINEER.
- 6 HEATER CONTROL PANEL SHOWN LEFT HAND, RIGHT HAND AVAILABLE, PLEASE SPECIFY.
- 7 HEATER CONTROL PANEL INCLUDES POWER FUSING, AIR FLOW SWITCH, AND CONTROL CIRCUIT TRANSFORMER.
- 8 TO INCLUDE MOTOR STARTER IN HEATER CONTROL PANEL, ADD 2.50 [6.35] TO 'E' AND ADD 2.00 [5.08] TO 'F'.
- 9 DIMENSIONS IN INCHES [CENTIMETERS].

MODEL	NOZZLE WIDTH "A"	MOUNTING WIDTH "B"	UNIT WIDTH "C"	HEATER CAPACITY (KW)	HEATER CONTROL PANEL DIMENSIONS BASED ON VOLTAGE ⁸								
					"D"			"E"			"F"		
					208V	230V	460V	208V	230V	460V	208V	230V	460V
CFC1060E	60.00 [152.40]	61.50 [156.21]	63.00 [160.02]	59	4.50 [11.43]	4.50 [11.43]	4.50 [11.43]	23.50 [59.69]	23.50 [59.69]	23.50 [59.69]	26.00 [66.04]	26.00 [66.04]	24.00 [60.96]
CFC1072E	72.00 [182.88]	73.50 [186.69]	75.00 [190.50]	65	4.50 [11.43]	4.50 [11.43]	4.50 [11.43]	23.50 [59.69]	23.50 [59.69]	23.50 [59.69]	26.00 [66.04]	26.00 [66.04]	24.00 [60.96]
CFC1084E	84.00 [213.36]	85.50 [217.17]	87.00 [220.98]	71	4.50 [11.43]	4.50 [11.43]	4.50 [11.43]	23.50 [59.69]	23.50 [59.69]	23.50 [59.69]	32.00 [81.28]	26.00 [66.04]	24.00 [60.96]
CFC1096E	96.00 [243.84]	97.50 [247.65]	99.00 [251.46]	92	4.50 [11.43]	4.50 [11.43]	4.50 [11.43]	28.50 [72.39]	23.50 [59.69]	23.50 [59.69]	35.00 [88.90]	32.00 [81.28]	24.00 [60.96]
CFC1108E	108.00 [274.32]	109.50 [278.13]	111.00 [281.94]	102	4.50 [11.43]	4.50 [11.43]	4.50 [11.43]	28.50 [72.39]	23.50 [59.69]	23.50 [59.69]	35.00 [88.90]	32.00 [81.28]	24.00 [60.96]
CFC1120E	117.00 [297.18]	118.50 [300.99]	120.00 [304.80]	124	4.50 [11.43]	4.50 [11.43]	4.50 [11.43]	34.50 [87.63]	34.50 [87.63]	23.50 [59.69]	33.00 [83.82]	33.00 [83.82]	30.00 [76.20]

PROJECT		
LOCATION		
ARCHITECT		
ENGINEER		REV. A
DWG. NO.	CFCQ3188	TITLE: BERNER
DATE	29JUN06	MODEL CFC AIR CURTAIN
BY	A. Johnston	ELECTRIC HEATED - ONE HEATER SYSTEM
REPLACES	12FEB03	
BY	B. Peffer	BERNER INTERNATIONAL CORP. NEW CASTLE, PA.