



Quality Tools for Smart Cleaning™

# STINGRAY

*The Ultimate Indoor Cleaning Tool*



## User Manual



# Table of Contents

**Warranty**..... 1

**1.0 Safety Information**..... 2

1.1 General Warnings..... 2

1.2 Intended Use..... 2

1.3 Glass Cleaner Liquid - Warning..... 2

**2.0 System Overview** ..... 4

**3.0 Installation** ..... 5

3.1 Installing the Glass Cleaner Pouch..... 5

3.2 Assembly of the Pad..... 5

3.3 Extension Poles..... 5

3.4 Battery Change..... 6


**4.0 Use**..... 6

**5.0 Maintenance & Storage**..... 7

**6.0 Technical Data**..... 7

**7.0 Environmental Information**..... 7

**⚠ WARNING!**



**THIS EXTENSION POLE CONDUCTS ELECTRICITY. HAZARD OF ELECTRICAL SHOCK OR BURN. AVOID POWER LINES.**  
Keep at least 10 feet (3 meters) away from any power lines.  
**READ AND FOLLOW THE STINGRAY INSTRUCTION MANUAL BEFORE USING THIS PRODUCT.**

**BEWARE OF FALLING OBJECTS**  
Improper use or abuse could result in serious injury or death. Read and follow ANSI Standard IWCA 1-14.1 (Window Cleaning Safety). Care must be taken when adding or removing pole sections. Make sure that locking pin locks securely into the locking hole. Do not drop or impact pole. Do not use with more than one short and two long poles, for a maximum length of 11 ft (3.3m).

## Warranty

The general terms and conditions of Unger apply.

### The warranty does not cover:

- Operating and installation errors.
- Opening/disassembly of housing other than by Unger (except battery change as described at 3.4 and chemical pouch change as described at 3.1).
- Replacing connections and hoses, other than by Unger.
- Replacing spare parts or components that are not recommended by Unger.
- Performing unauthorized modifications to the design.
- Use of unauthorized chemical additives.
- Non-compliance with safety and maintenance regulations.

### The manufacturer is not liable for the function of the device:

- When use is not in accordance with product instructions.
- When used for applications not in accordance with product instructions.
- When failing to comply with safety instructions.

**To reduce risk and injury, read entire manual before use.**



# Introduction

Thank you for your purchase of the Unger Stingray Indoor Cleaning System. This manual will help you get set up and begin using your system right away.

## 1.0 Safety Information

The user must comply with all applicable local and federal labor laws and safety codes and standards. Prior to system installation and start-up, it is essential that you observe the safety regulations and instructions for installation and maintenance contained in this manual.

### 1.1 General Warnings

- Always keep a safe distance away from any sources of electricity, including electric and power lines, to prevent electrical shock.
- To prevent damage to the surfaces, never clean LED, LCD, plasma or similar monitors with this system.
- Avoid spraying in the air. Place the cleaning pad on glass and spray in short intervals.
- Avoid eye contact. Do not swallow and avoid breathing the cleaning liquid (see 1.3. and the Safety Data Sheet for the glass cleaner liquid).
- Never use with more than one short and two long pole sections, for a maximum length of 11 feet/3.3m.

### 1.2 Intended Use

This cleaning tool is intended for indoor surface cleaning. Always take care that the device is properly installed, regularly maintained and used only as intended. The temperature in the working area should be between 40°F - 105°F (5°C - 40°C).

### 1.3 Professional Glass Cleaner Liquid - Warning

**CAUTION!** May irritate eyes. May irritate nose and throat. Not classified as hazardous according to OSHA Hazard Communication Standard, 29 CFR 1910.1200. Contains: Water (7732-18-5), Non-ionic Surfactants (NJTSRN 04499600-6633) (Trade Secret), Isopropyl Alcohol (67-63-0), Ethoxylated C9-11 Alcohols (68439-46-3), Sodium Lauryl Sulfate (151-21-3), Fragrance Added (Mixture). **READ AND FOLLOW INSTRUCTION MANUAL.** Precautions: Avoid eye contact. Avoid breathing of vapors, mists or spray. Use only with adequate ventilation. Do not swallow. **KEEP OUT OF REACH OF CHILDREN.** If medical advice is needed, have product container or label at hand. IF IN EYES: Rinse cautiously with water for several minutes. Remove contact lenses, if present and easy to do. Continue rinsing. If eye irritation persists: get medical attention. REFER TO SAFETY DATA SHEET FOR MORE INFORMATION. IN CASE OF SPILL, LEAK, FIRE, EXPOSURE OR ACCIDENT CALL CHEMTREC DAY OR NIGHT. WITHIN USA AND CANADA: 1-800-424-9300 CCN726541 OR +1 703-527-3887 (COLLECT CALLS ACCEPTED). Dispose of in accordance with applicable regional, national and local laws and regulations.

Do not use on any LED, LCD or plasma screen.  
Do not use with other liquids unless recommended by Unger.

The Safety Data Sheet can be read and downloaded from our website [www.ungerglobal.com](http://www.ungerglobal.com) or requested directly from [compliance@ungerglobal.com](mailto:compliance@ungerglobal.com)

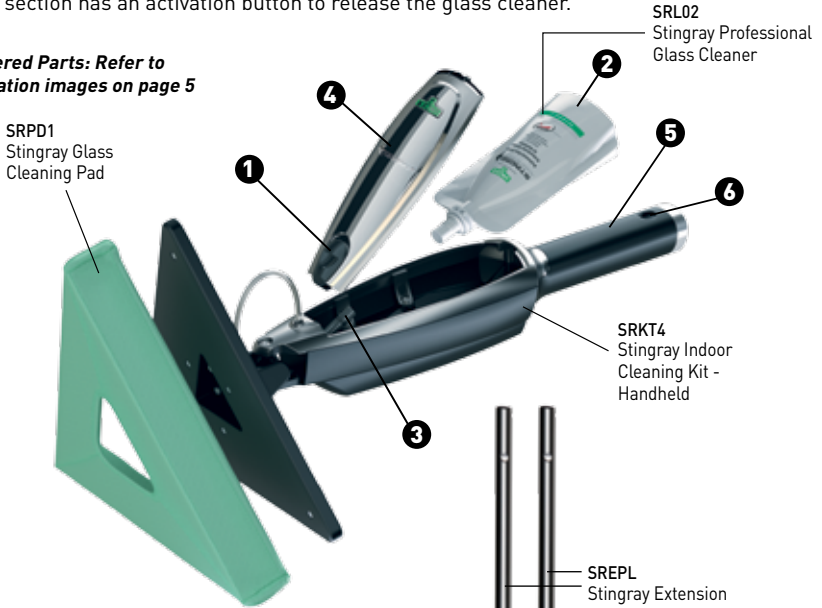
## 2.0 System Overview




Stingray is a modular system. The handheld cleaning unit consists of a triangular cleaning head equipped with a microfiber pad. The head is flexible and has an embedded spray jet in the center. The body of the unit can be opened to change the glass cleaner pouch and to change batteries.

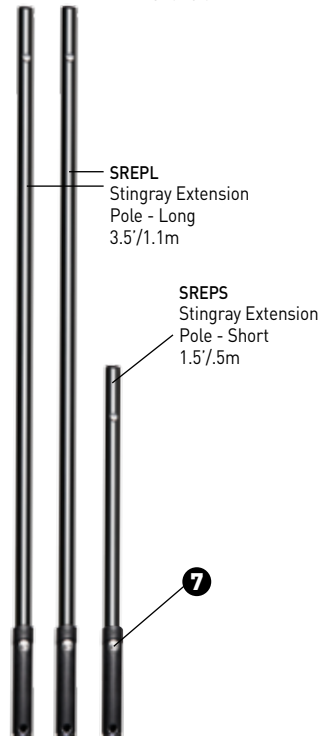
The handheld unit can be used as a hand tool or can be extended/collapsed with extension poles. The activation button on the back of the unit is used to release the glass cleaner.

Every pole section has an activation button to release the glass cleaner.

**Numbered Parts: Refer to Installation images on page 5**



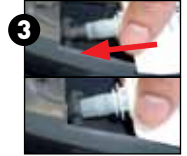
Description	Part No.
 <p><b>Stingray Indoor Cleaning Kit - Handheld</b></p>	<p><b>SRKT4</b> - Kit Contents: Stingray Handheld SRPD1 Glass Cleaning Pad SRL02 Glass Cleaner Includes 2-AA Batteries</p>
 <p><b>Stingray Indoor Cleaning Kit - 3'</b></p>	<p><b>SRKT5</b> - Kit Contents: Stingray Handheld SREPS Extension Pole - Short 1.5'/0.5m SRPD1 Glass Cleaning Pad (3) SRL02 Glass Cleaner (4) Includes 2-AA Batteries</p>
 <p><b>Stingray Indoor Cleaning Kit - 10'</b></p>	<p><b>SRKT6</b> - Kit Contents: Stingray Handheld SREPL Extension Pole - Long 3.5'/1.1m (2) SREPS Extension Pole - Short 1.5'/0.5m SRPD1 Glass Cleaning Pad (3) SRL02 Glass Cleaner (4) Includes 2-AA Batteries</p>



## 3.0 Installation

### 3.1 Installing the Glass Cleaner Pouch

- Open the compartment on handheld unit by sliding the black button back and remove the lid (picture 1).
- Take a new pouch out of the box and screw off the protective cap.
- Push the pouch onto the connector at the top of the compartment. You can rotate the connection stem up to have better access (picture 2). Always change the pouch with the cleaning head facing up.
- Push the pouch as far as possible onto the connection stem to prevent leakage (picture 3).
- Push the pouch and pin down so that it fits into the compartment.
- Replace the lid and confirm that the black button is locked into place (picture 4).
- **Attention:** When the pouch is removed, prevent the liquid from leaking by replacing the protective cap. Clean and dry any spills with a clean cloth.
- The batteries included with the unit have been approved for international transport/shipping.



### 3.2 Assembly of the Pad

- The system is equipped with a triangular shaped microfiber pad.
- The pad provides maximum cleaning power in combination with the Stingray Glass Cleaner.
- Put the microfiber pad onto the padholder. Fix it in place with the elastic bands in each corner.
- Once the pad is dirty, take it off and wash it. Please see care label on pad.
- The area that can be cleaned with one pad will vary depending on the



### 3.3 Extension Poles

- The handheld unit can be used as a hand tool for easy to reach surfaces (picture 5).
- The handheld unit can be extended to reach higher or hard to reach surfaces using the available short (1.5'/.5m) or long (3.5'/1.1m) extension poles (see page 4).
- The system is designed to use a **maximum of two long and one short extension poles.** **Never exceed maximum recommended length. Unger is not liable for any damages or injuries resulting from the failure to follow these instructions.**
- The handle of the unit and the extension poles have a triangular profile. **When adding extension poles, be sure locking pins are locked into corresponding pin holes** (picture 6).
- To unlock, press the locking pin and separate the extension poles (picture 7).

## Installation/Use

### 3.4 Battery Change

- Two AA batteries are required.
- The battery compartment is located under the pouch.
- Remove the pouch from the compartment during battery change.
- Unscrew the battery lid.
- Remove old batteries and dispose of in accordance with applicable federal, state/provincial and local regulations.
- Replace with new batteries. Pay attention to the correct orientation of each battery.
- Close the compartment and secure the lid with the screw.
- Do not expose batteries to direct sunlight, heat or fire. There is a risk of explosion!



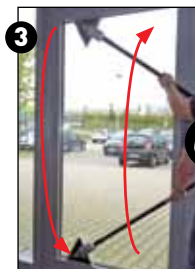
### 4.0 Use

Every pole section has its own activation button to start the pump.

1. Before beginning a new cleaning job or when using a new pad, press the trigger or activation button for five seconds to pre-moisten the pad. Use circular motions to dampen the entire surface of the pad. During the cleaning process, use as little liquid as possible. If you need to re-moisten the pad, hold the trigger or activation button for about one second.

You don't need to use much cleaning liquid. Because the pad is made from high performing microfiber material, it only needs to be damp to achieve the best cleaning results.

2. When window cleaning, start by cleaning the window frames. Beginning in one corner, clean the outer edge of the window being sure to keep contact with the frame.
3. Once outer area is cleaned, in all four corners and along all four edges, clean inner area of window.



or



## Additional Information

### 5.0 Maintenance & Storage

After use, clean and dry all extension poles with a microfiber cloth. Read and follow the washing instructions on the pad. Store the system safely. Do not lean extended poles against a wall. An upright position with cleaning head up is recommended. The Stingray Cleaning System fits into standard toolholders that are mounted to a wall.

The temperature in the storage room should be in the range of 40°F - 105°F (5°C - 40°C) max.

### 6.0 Technical Data

Length of main unit	20 inches/51 cm
Length of short extension pole	1.5 feet/.5 meters
Length of long extension pole	3.5 feet/1.1 meters
Max. Product Length	2x long, 1x short extension pole (Approx. 11 feet/3.3 meters)
Dimension cleaning head / microfiber pad	10.25 x 9 inches/26 x 23 cm
Batteries needed	2x AA, 3V, 40 mA

### 7.0 Environmental Information

- The outer packing material (except the liquid pouch) can be recycled.
- Handheld units and poles contain valuable materials that can be recycled. Please arrange for the proper recycling of old units.
- Batteries contain substances that must not enter the environment. Please dispose of your old batteries in accordance with applicable federal, state/provincial and local regulations.



Quality Tools for Smart Cleaning™

# **STINGRAY**

*The Ultimate Indoor Cleaning Tool*

**100%**  
**CUSTOMER**  
**SATISFACTION**  
**GUARANTEE**

At Unger, we aim to stand apart from the rest thanks to our special "Yes We Can!" service spirit. We love what we do and as proof of that, we promise to deliver a 100% Customer Satisfaction Guarantee on every product and service we offer.

**Unger Enterprises Inc.**

425 Asylum Street • Bridgeport, CT 06610

Tel.: 800 431 2324 • Fax: 800 367 1988