

RCA

QuickStartGuide

English **small wonder**

EZ2050 Series RCA Small Wonder Camcorder
www.rcaaudiovideo.com

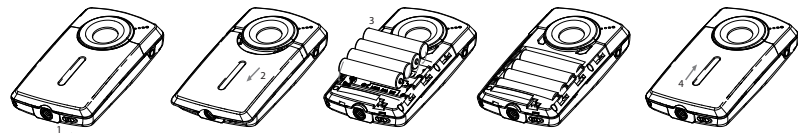
Congratulations on purchasing your new RCA Small Wonder Camcorder.
Please read these instructions for quick tips on using the product.

The User Manual PDF file can also be found in the CD ROM under the User Manuals folder.

1. Content of the box

- Small Wonder Camcorder
- AAA batteries x 4
- USB cable
- AV cable
- CD-ROM
- Lanyard
- Soft pouch
- Quick Start Guide

2. Battery Installation



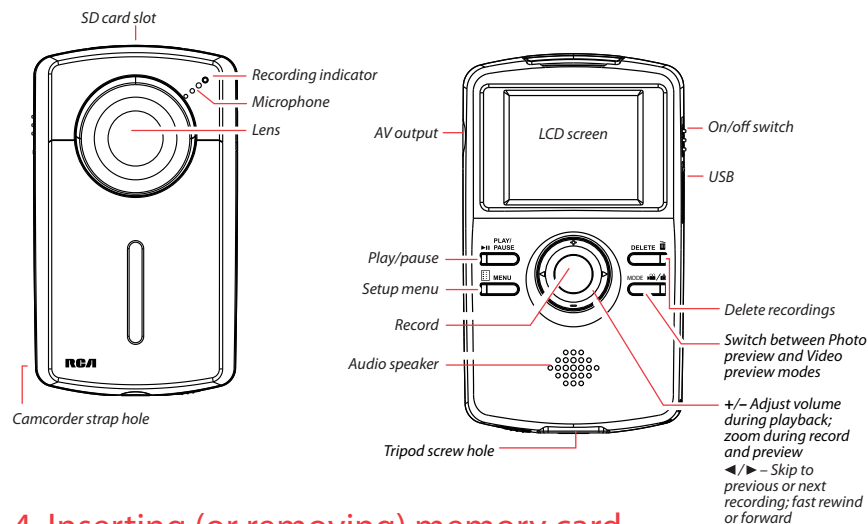
Push (to the right) to unlock.

Observe the polarities.

Slide up to lock.

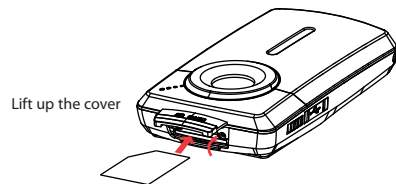
The camcorder can also be powered by USB. Refer to Connecting to a PC section in the User Manual for connecting details. When the camcorder is connected to a PC, three options will be displayed: USB connect, Web cam and USB power. Press + or - to select USB power and press **RECORD** to confirm.

3. General controls



4. Inserting (or removing) memory card

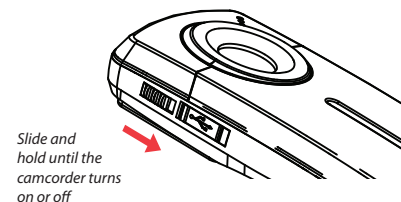
An SD memory card (not included) is recommended for recording.



To insert card: Push the card in until a click is heard

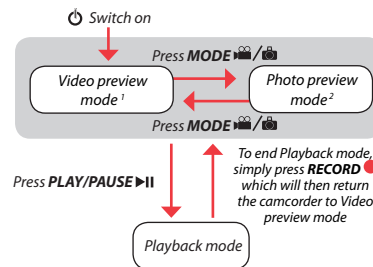
To remove card: Push card in until a click is heard, then slowly release the card. As card is under minimal tension when locked in memory slot, please use care when removing.

5. Turning on the camcorder



- ¹ In Video preview mode, press **RECORD** to record a video
² In Photo preview mode, press **RECORD** to record a photo

There are three basic modes for operating the camcorder: Video preview mode, Photo preview mode and Playback mode. It will always launch in video preview mode after being switched on. Refer to the diagram below for switching between modes.



6. Selecting recording quality

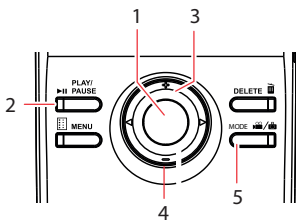


Settings	Resolutions (pixel) & Frame Rates (FPS)	Approx. recording durations on a 32 GB memory card ³
HD	1280 x 720 @ 30fps	4 hours
HQ	720 x 480 @ 30fps	6 hours
WebQ	320 x 240 @ 30fps	17 hours

1. In Video preview mode, press **MENU** to show the camcorder menu.
2. Press - or + to highlight Quality within the Video Menu
3. Press **RECORD** to select Quality which will then expose the choices of HD, HQ and WebQ.
4. Press - or + to highlight the desired Quality from HD, HQ or WebQ, then press REC to save that setting.
5. Press **MENU** to exit the camcorder menu. The selected setting (HD, HQ or WebQ) appears on the display screen during preview.

³ Actual recording time and capacity will vary depending on type of video content being recorded, system requirements, and other factors.

7. Video recording and photo taking

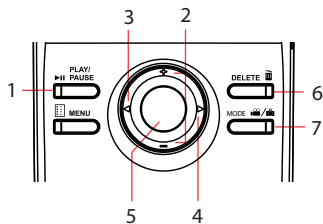


- 1 Start, stop, resume recording in Video preview mode; enter Video preview mode from other modes
- 2 Pause and resume recording
- 3 Zoom in during recording
- 4 Zoom out during recording
- 5 Switch between Video preview mode or Photo preview mode



Video recording indicator

8. Playing back or deleting recordings



- 1 Enter Playback mode to play the most recent recording; start or pause playback
- 2 Adjust volume during playback
- 3 Cue to previous recording
- 4 Cue to next recording
- 5 Stop playback or enter Video preview mode from Playback mode
- 6 Press to select delete one or all recordings.
- 7 When video playback stops, enter Video preview mode from Playback mode

9. Installing RCA Memory Manager application

Connect the camcorder to your PC with the provided USB cable. Place the supplied CD-ROM in the CD-ROM tray.

To install Memory Manager 3

Windows: To access the Memory Manager 3 installer, go to **My Computer** (XP users) /go to **Computer** (Vista and 7 users) in the Start menu, find and open the drive letter associated with the CD rom and then double-click the **MemoryMgr3_Windows_Installer.exe** file to launch the installer. The RCA Detective application is installed with Memory Manager 3 and will automatically run the Memory Manager 3 application when your camcorder is connected to the PC.

Mac: To access the Memory Manager 3 installer, double-click the CD rom volume. Double-click the **RCAMacInstallers.dmg** disk image in the CD rom volume. Locate the **RCAMacInstallers** volume on the desktop and Double-click on it. Double-click the **MemoryMgr3 Mac Installer** file in the **RCAMacInstallers** volume to start the installation. After the Memory Manager 3 installation has completed, double-click the **RCA Detective Installer** file in the **RCAMacInstallers** volume to install the RCA Detective application, which will automatically run the Memory Manager 3 application when your camcorder is connected to the Mac.

To ensure that videos can be managed and played on your PC:

- Make sure to install the included Memory Manager application.

10. Using camcorder as Web Camera in PC

To use the camcorder as a Web Camera in your PC, a driver file is needed. Please go to www.rcaaudiovideo.com to download the file.

After downloading the driver file, follow the instructions and complete the installation.

Connect the camcorder to the PC, after the camcorder displays the selection menu, select the Web Cam option and press **RECORD** ●. Now the camcorder is connected as Web Camera to the PC.

11. Learning more about the camcorder

Read the user manual for more information on the following:

- Using the **MENU** button to setup the camcorder (including date and time)
- Viewing videos on TV
- Recording videos to VHS tape or DVD
- Connecting the camcorder to your PC
- Tips and troubleshooting
- Safety and warranty information

Product registration

Thank you for purchasing an RCA product. We pride ourselves on the quality and reliability of all our electronic products but if you ever need service or have a question, our customer service staff stands ready to help. Contact us at www.rcaaudiovideo.com

PURCHASE REGISTRATION: Registering On-line will allow us to contact you in the unlikely event a safety notification is required under the Federal Consumer Safety Act.

Register Online at:

WWW.RCAAUDIOVIDEO.COM

Click on Product Registration and Fill Out the Brief Questionnaire