

SubliJet® R

Ricoh SG 7100DN



POWERDRIVER™

USER'S MANUAL

Ricoh SG 7100DN PowerDriver-R User's Manual

PowerDriver-R is equipped with a user-friendly software interface that allows individuals to access and customize driver configuration settings for optimal printing performance. As an added bonus, PowerDriver-R is also outfitted with several resource and utility features to bring additional help and support for customers looking to bolster their printing experience. Through these powerful features, users are able to gain complete control over their image quality, color output and print options.

- 1) To view the PowerDriver R configuration settings, click your start icon and select Devices and Printers (see FIGURE 1). If you are using an older version of Windows OS, you will instead select Printers and Faxes.

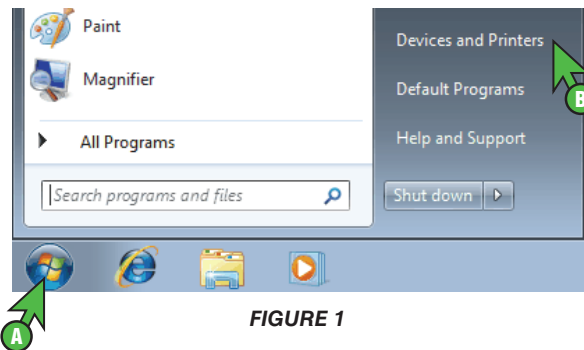


FIGURE 1

- 2) In the Devices and Printers folder, right-click on the PowerDriver R SG7100DN icon and select Printing Preferences (see FIGURE 2).

NOTE: You can also access the PowerDriver printing Preferences window by clicking “Print Properties” or “Print Preferences” within the print window of your graphic design software.

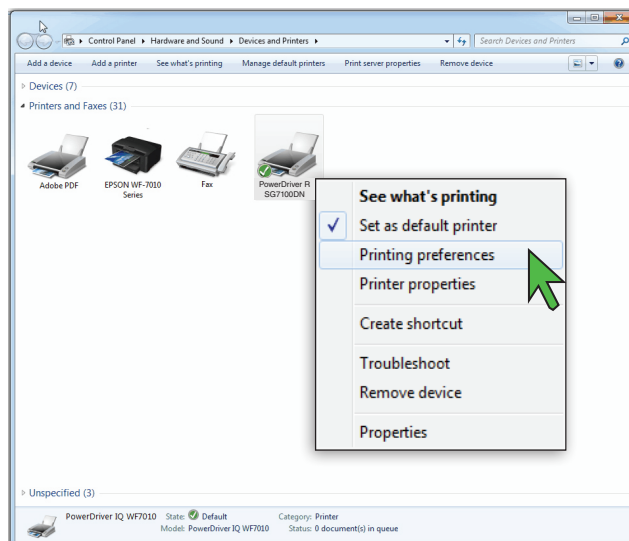


FIGURE 2

SubliJet-R: Ricoh SG 7100DN PowerDriver-R User's Manual

- 3) With the PowerDriver-R SG7100 Printing Preferences window open, click the **Virtual Printer Driver** tab. Here you will find five different **SECTIONS** to utilize: (see *FIGURE 3*)

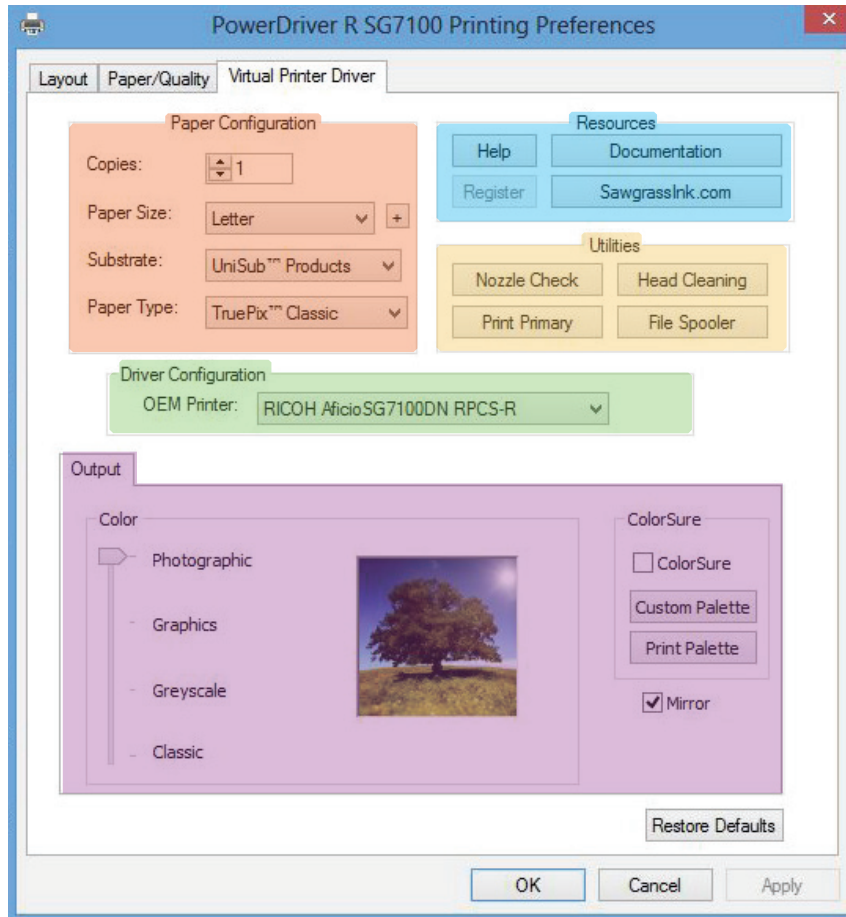
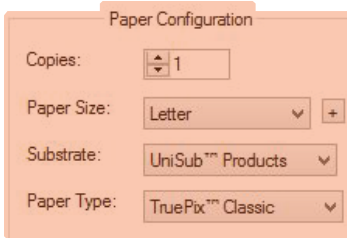


FIGURE 3

- SECTION 1** Paper Configuration Choose Paper Size and Type, Copies and Substrate
- SECTION 2** Driver Configuration Select OEM printer intended for use
- SECTION 3** Output Adjust Color, Create Palette and Mirror Image
- SECTION 4** Resources Access Documentation, Help and Online Support
- SECTION 5** Utilities Access Resources intended for Printer Maintenance

SubliJet-R: Ricoh SG 7100DN PowerDriver-R User's Manual

SECTION 1



Paper Configuration

Copies: 1

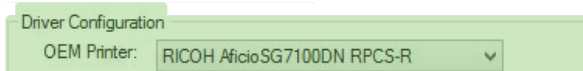
Paper Size: Letter

Substrate: UniSub™ Products

Paper Type: TruePix™ Classic

- Copies** Sets the number of prints needed per image. Use this feature when multiple prints of the same image are needed.
- Paper Size** Sets the desired output paper size used in the printer. Adjust this to match the size of the transfer paper in the paper tray.
- Substrate** Sets the desired substrate being used. Match this to the type of material on to which you will be transferring your printed image. Because PowerDriver's color management is optimized for each substrate listed, it is important to choose the substrate that most closely matches the substrate being used.
- Paper Type** Sets the desired paper type being used. Match this to the type of transfer paper you will be printing on. Because PowerDriver's color management is optimized for each paper type listed, it is important to choose the paper type that most closely matches the transfer paper being used.

SECTION 2

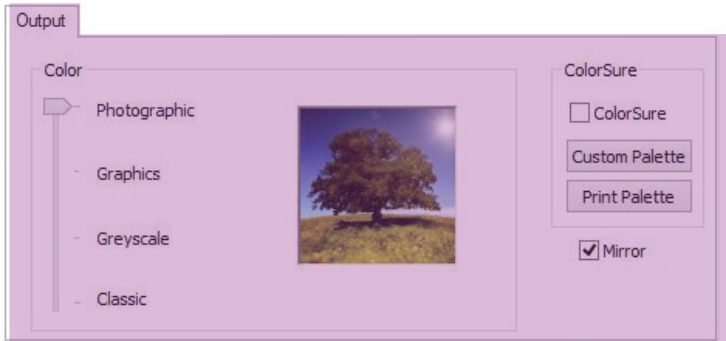


Driver Configuration

OEM Printer: RICOH AficioSG7100DN RPCS-R

- OEM** Sets the OEM printer intended for use with PowerDriver-R. This feature is particularly useful when printing to multiple printers of the same ink set or multiple printers that require multiple drivers. For instance, if you have two SG7100DN's and one is for printing ChromaBlast-R while the other is for printing SubliJet-R, you are able to set the printer loaded with SubliJet-R as the default printer in the PowerDriver-R or vice versa. On the other hand, if you have two SG7100DN's and both are for printing with SubliJet-R, you can choose between each printer per print job.

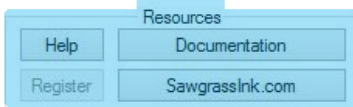
SECTION 3



- Photographic** This setting is intended as a realistic color management solution. It is most suitable for photographic images containing landscapes or portraits.
- Graphics** This setting is intended as a business graphics color management solution. It is most suitable for business logos and designs that require a more vivid color output.
- Grayscale** This setting is intended for printing monochromatic or black and white images. It allows you to print images using varying shades of gray only.
- Classic** This setting is intended to be similar to the profile of the previous generation Ricoh GX e7700N SubliJet R solution. The classic selections allows replication of legacy prints with minimal color variation for seamless transition when upgrading to the Ricoh GX e7700N SubliJet R solution.
- Mirror** Check this box to “flip” or reverse your image. The image reverses again when transferring from paper to substrate. Therefore, you will need to “flip” or reverse the image before printing to the transfer paper.
- ColorSure** Check this box if you want to use the ColorSure color palette. ColorSure is a method for reproducing exact spot colors. By picking colors from the ColorSure Palette, you will be able to consistently reproduce colors in a reliable manner. See the [Sawgrass Website](#) for more information about using ColorSure.
- Custom Palette** Here you can add your own unique colors to the ColorSure palette. ColorSure must be checked in Color Options in order to use this feature.
- Print Palette** Click here to print the default ColorSure Palette. This feature allows you to see how colors will look once transferred to your desired substrate. Before you print the ColorSure Palette, be sure to choose the paper size, paper type and substrate that most closely resemble those which you are using. The default ColorSure Palette will also contain custom colors once you have added and saved them using the Custom Palette utility.

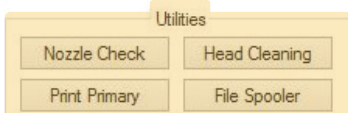
SubliJet-R: Ricoh SG 7100DN PowerDriver-R User's Manual

SECTION 4



- Help** Click here to access general information about PowerDriver-R. The help dialog menu also contains a direct links to our website, where you can find the latest driver updates, literature and educational resources offered by Sawgrass Technologies, Inc.
- Documentation** Click here to view and/or download the latest documentation which will guide you through the installation, registration and setup of your printer, driver and software.
- Register** Click here to register your product. Registration is required to unlock all product features and functions that PowerDriver-R has to offer. You must register PowerDriver-R for every PC on which it is installed.
- Sawgrassink.com** Click here to access the Sawgrass Technologies, Inc. website. You will find the absolute latest information and updates on all products, materials, processes, and/or procedures relative to all offerings by or through Sawgrass Technologies, Inc.

SECTION 5



- Nozzle check** Click here to print a test pattern to check nozzle condition. If any of the nozzle patterns are missing or incomplete, then a head cleaning is required.
- Head Cleaning** Click here to initiate the head cleaning process. This feature is necessary when nozzles are missing thus causing color shift or "banding" in your printed images. You should print a nozzle check to confirm missing nozzles before performing a head cleaning. Repeat the Head Cleaning until a complete nozzle check has been achieved. Cartridge users should only perform two (2) head cleanings, while users of bulk ink systems can try up to five (5). Contact technical support if you fail to achieve a good / complete nozzle check after the recommended amount of cleanings.
- Print Primary** Click here to print a primary ink chart. This chart contains a series of blocks which represent each ink channel on the print head. It can be useful when attempting to troubleshoot or trying to clear clogged nozzles.
- File Spooler** Click here to launch the File Spooler Utility. This feature is solely intended for advanced users and technical support for troubleshooting. It allows you to print jobs that were previously processed and saved to disk as text files or print ready files, also known as PRN files.

SubliJet-R: Ricoh SG 7100DN PowerDriver-R User's Manual

- 4) At the top of the PowerDriver-R SG 7100DN Printing Preference window, click the **Layout** tab. Here you will find four different **SECTIONS** to utilize: (see *FIGURE 4*)

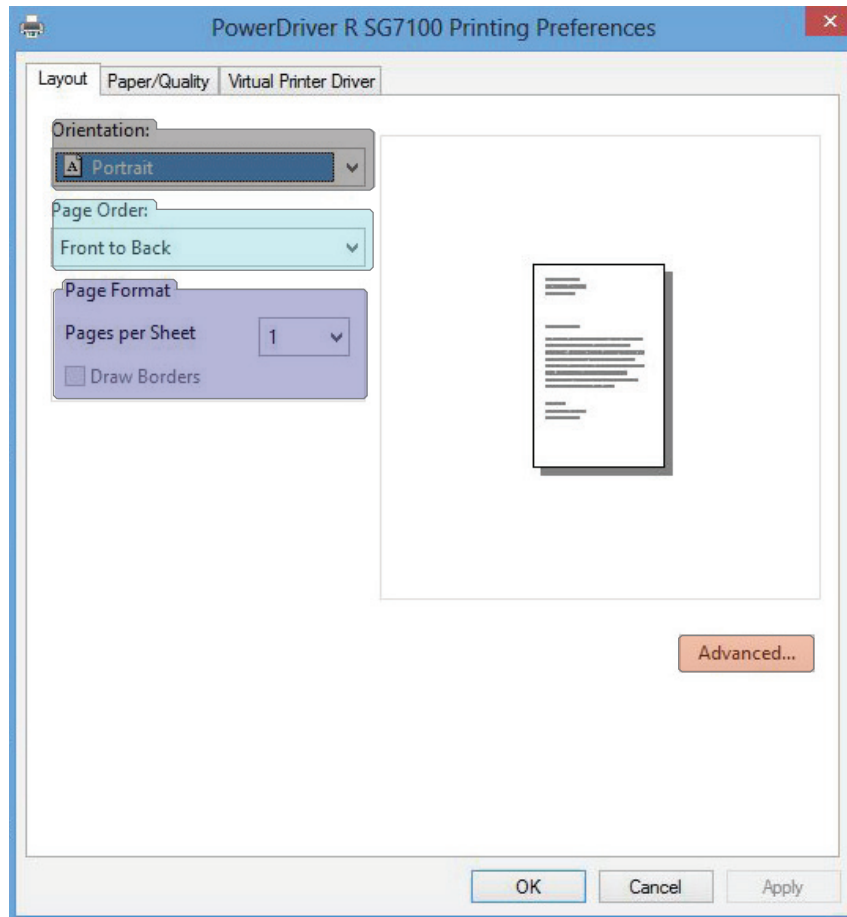
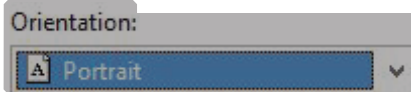


FIGURE 4

- SECTION 6** **Orientation** Choose the direction in which an image is printed
- SECTION 7** **Page Order** Sets the chronological order when printing images
- SECTION 8** **Page Format** Adjust the number of pages per sheet
- SECTION 9** **Advanced...** Access the current Document Settings

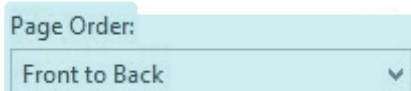
SECTION 6



Portrait With this selection the page height is longer than the width. In other words, the image is printed vertically from top to bottom.

Landscape With this selection the page width is longer than the height. In other words, the image is printed horizontally from left to right.

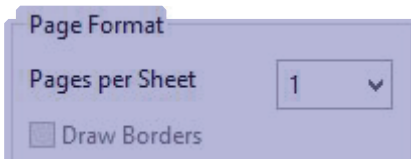
SECTION 7



Front to Back Using this setting will print the first image first and the last image last. For instance, if 4 different images are printed at the same time, they will print in the following order: 1, 2, 3 and 4.

Back to Front Using this setting will print the last image first and the first image last. For instance, if 4 different images are printed at the same time, they will print in the following order: 4, 3, 2 and 1.

SECTION 8



Pages per Sheet Allows you to fit multiple pages on a single sheet of paper. The default value 1 should be used when printing one image/page per sheet.

Draw Borders Prints frames around the pages printed on each sheet.

SECTION 9



Document Settings Click here for an overview of the default advanced document settings. These settings have been specifically engineered per printer platform and should not be adjusted by the end user.

SubliJet-R: Ricoh SG 7100DN PowerDriver-R User's Manual

- 5) At the top of the PowerDriver-R SG 7100DN Printing Preference window, click the **Paper/Quality** tab. Here you will find three different **SECTIONS** to utilize: (see *FIGURE 5*)

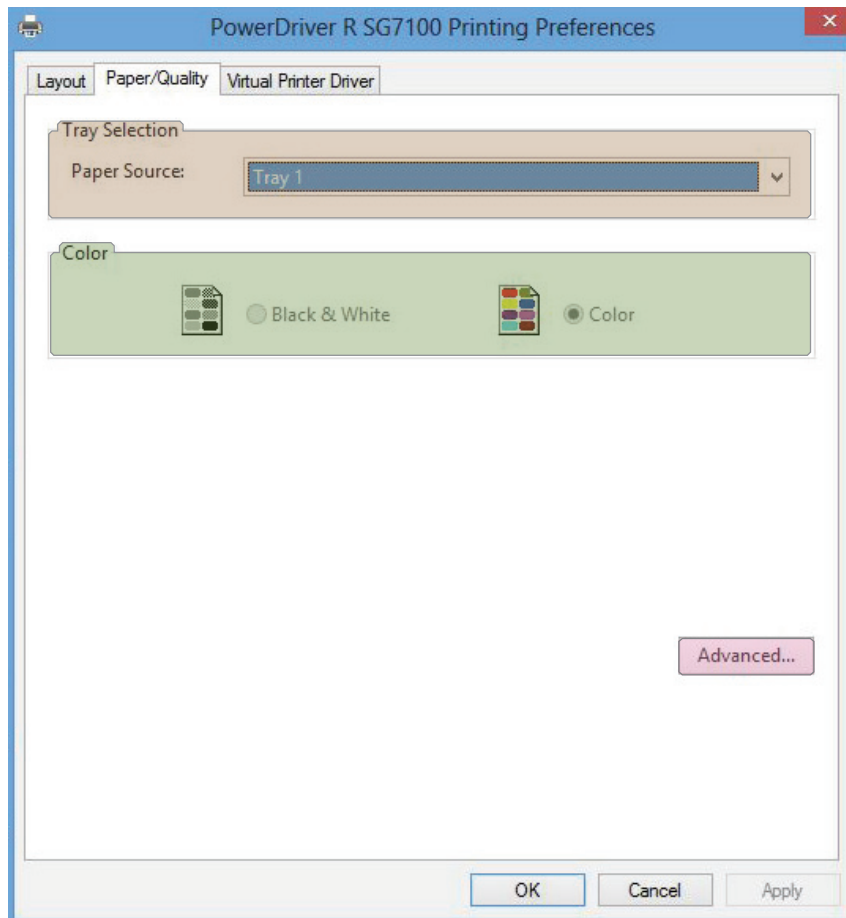
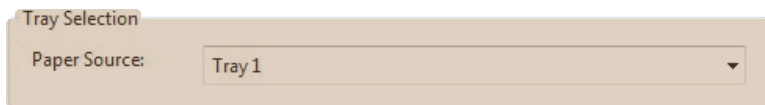


FIGURE 5

- SECTION 10** Tray Selection Allows you to select the printer's paper source
- SECTION 11** Color This default is locked and controlled by PowerDriver-R
- SECTION 12** Advanced... Access the current Document Settings

SubliJet-R: Ricoh SG 7100DN PowerDriver-R User's Manual

SECTION 10

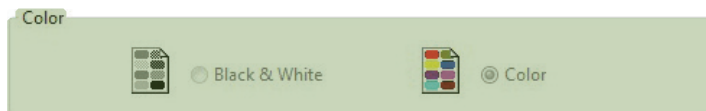


Automatically Select Use this setting if you would like the printer driver to select the appropriate tray as your paper source.

Tray 1 Use this setting if you plan to use the primary paper tray as your paper source. It is recommended to use this as your default paper source.

Bypass Tray Use this setting if your printer is equipped with an additional tray which you would like to use as your primary paper source.

SECTION 11



Black & White This setting has been specifically engineered per printer platform and should not be adjusted by the end user.

Color This setting has been specifically engineered per printer platform and should not be adjusted by the end user.

SECTION 12



Document Settings Click here for an overview of the default advanced document settings. These settings have been specifically engineered per printer platform and should not be adjusted by the end user.

For the absolute latest information and updates on all products, materials, processes and/or procedures relative to all offerings by or through Sawgrass Technologies, Inc., refer to our website:

www.sawgrassink.com

